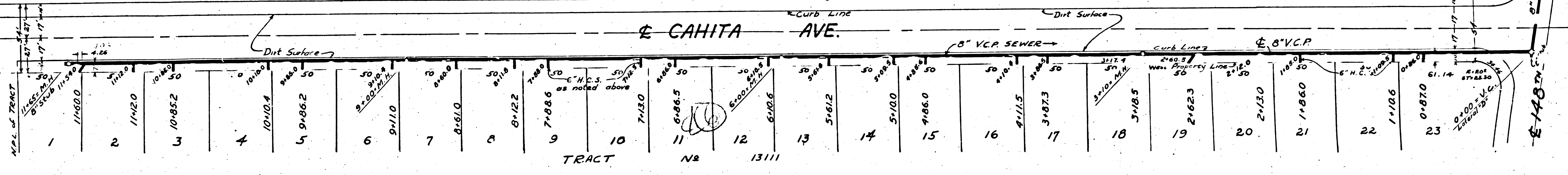


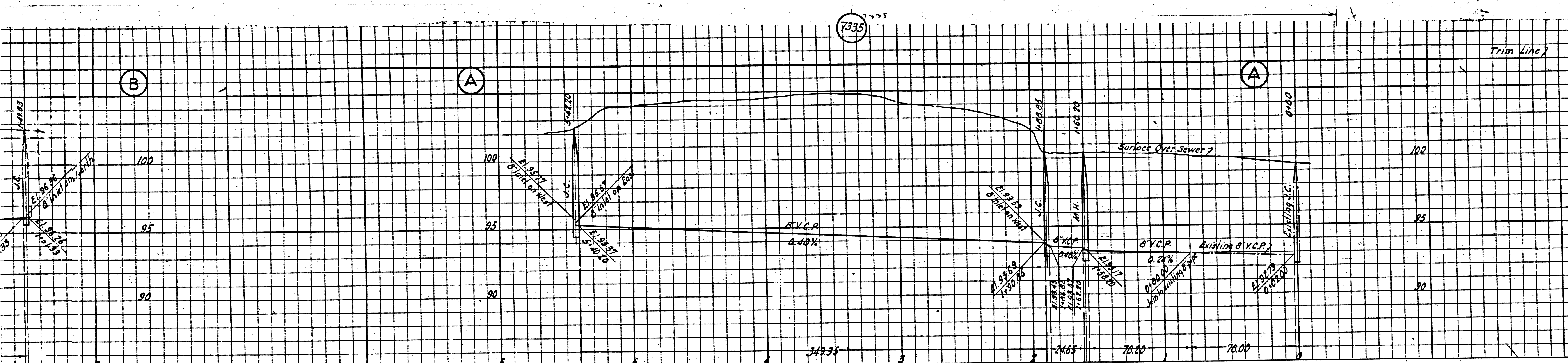
TRACT No. 13111

Served by Sewer in Right of Way

E CAHITA AVE.

NOT A PART OF THIS SUBDIVISION





PROFILE ALIGNMENT AND GRADE OF
SANITARY SEWERS
 TO BE CONSTRUCTED IN
DEODORA AVE.
 BETWEEN A POINT 60 FT. NORTH OF FIRST ALLEY SOUTH OF 149TH ST. AND 148TH ST.
 BETWEEN DEODORA AVE. AND A POINT 30 FT. WESTERLY THEREFROM
 148TH ST.
 BETWEEN APRILIA AVE. AND A POINT 150 FT. WESTERLY THEREFROM
SANITARY SEWER RIGHT OF WAY
 IN LOT 2, RANGE 1, BEAUDRY, DOWNEY AND HAYWARD TRACT

PRIVATE CONTRACT NO. 517
 W.S. 26
 (REVISION)
 SHEET 2 OF 2 SHEETS
 PREPARED BY

Walter Kimmel, Inc.
 Reg. C.E. No. 1933

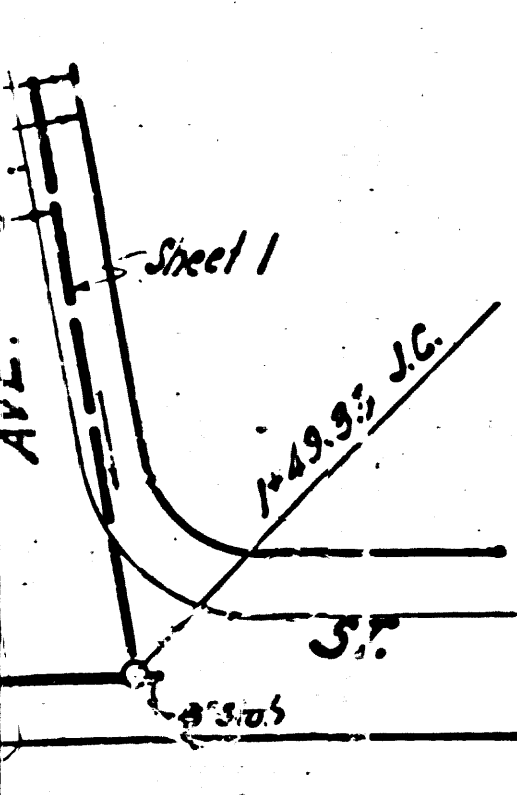
FOR LEGEND
 SEE PLAN NO. 5-6-64

FOR CONSTRUCTION NOTES SEE SHEET 1

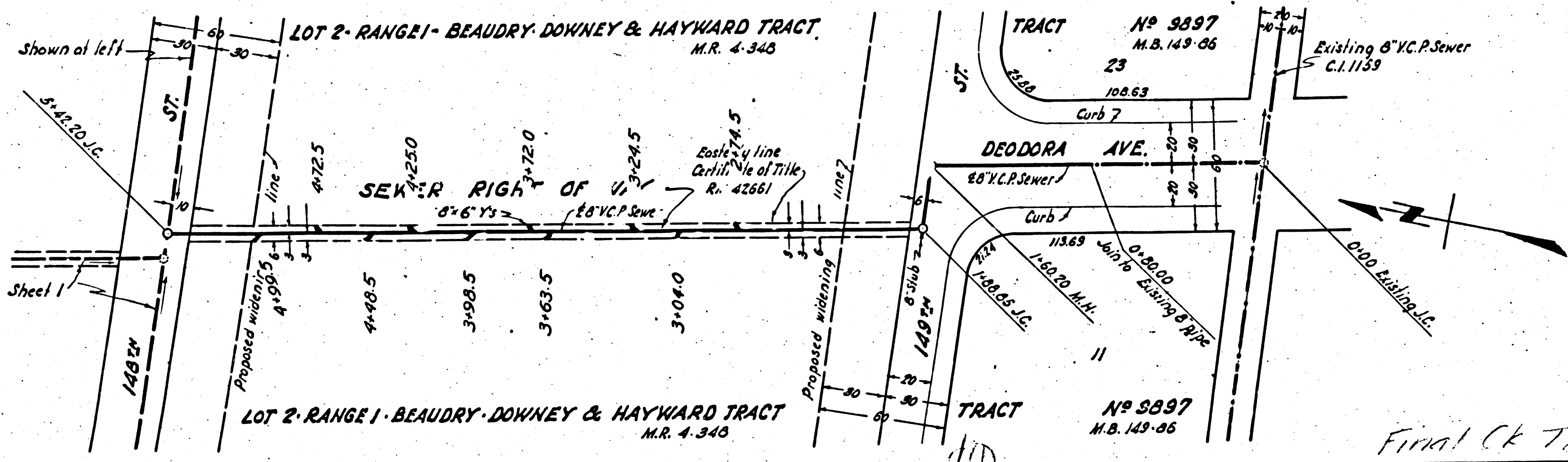
COUNTY OF LOS ANGELES, CALIFORNIA.

APPROVED *Edmund*
 SANITARY DISTRICT ENGINEER
 APPROVED *Carlson*
 COUNTY ENGINEER OF COUNTY
 SANITATION DISTRICT NO. 6

CHECKED BY *Paul D. Jones* Sept 18 1947
 CITY OF COUNTY ENGINEER

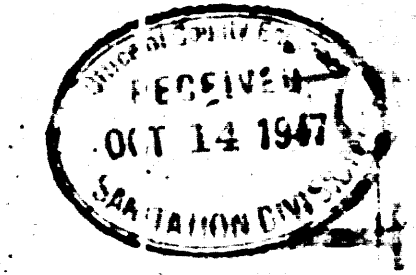


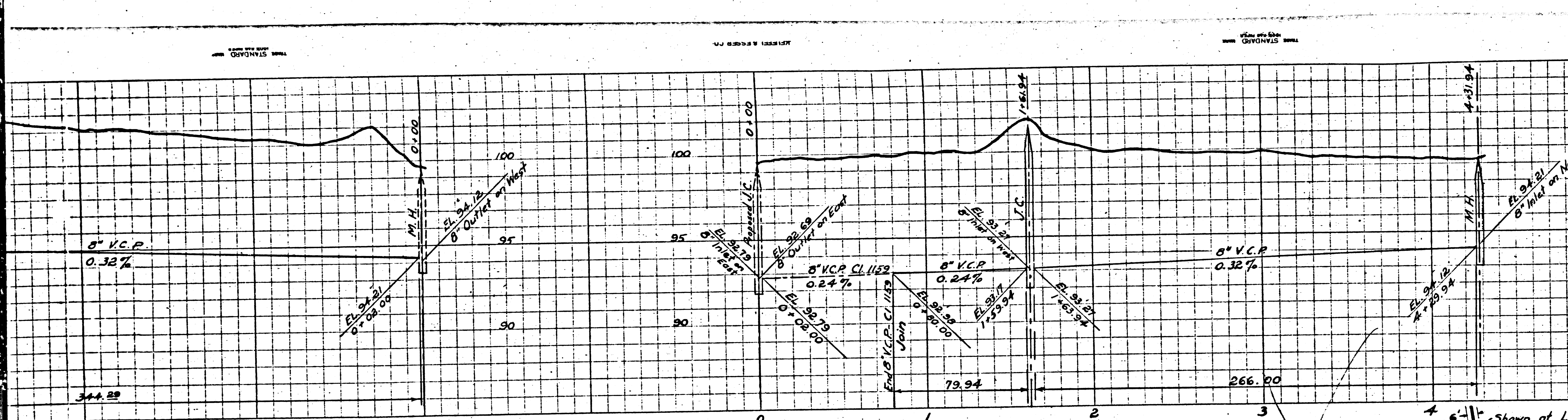
HAYWARD TRACT
 M.R. 4-343



Final CK 712 11/7/47

Trim Line





B.M. 2 (RD) - LUTIN CURB, 1' SOUTH, CURB RETURN
AT SE. COR. OF DEODORA AVE AND
ELEV 99.445 1st ALLEY, NORTH OF 150th STREET

NOTES

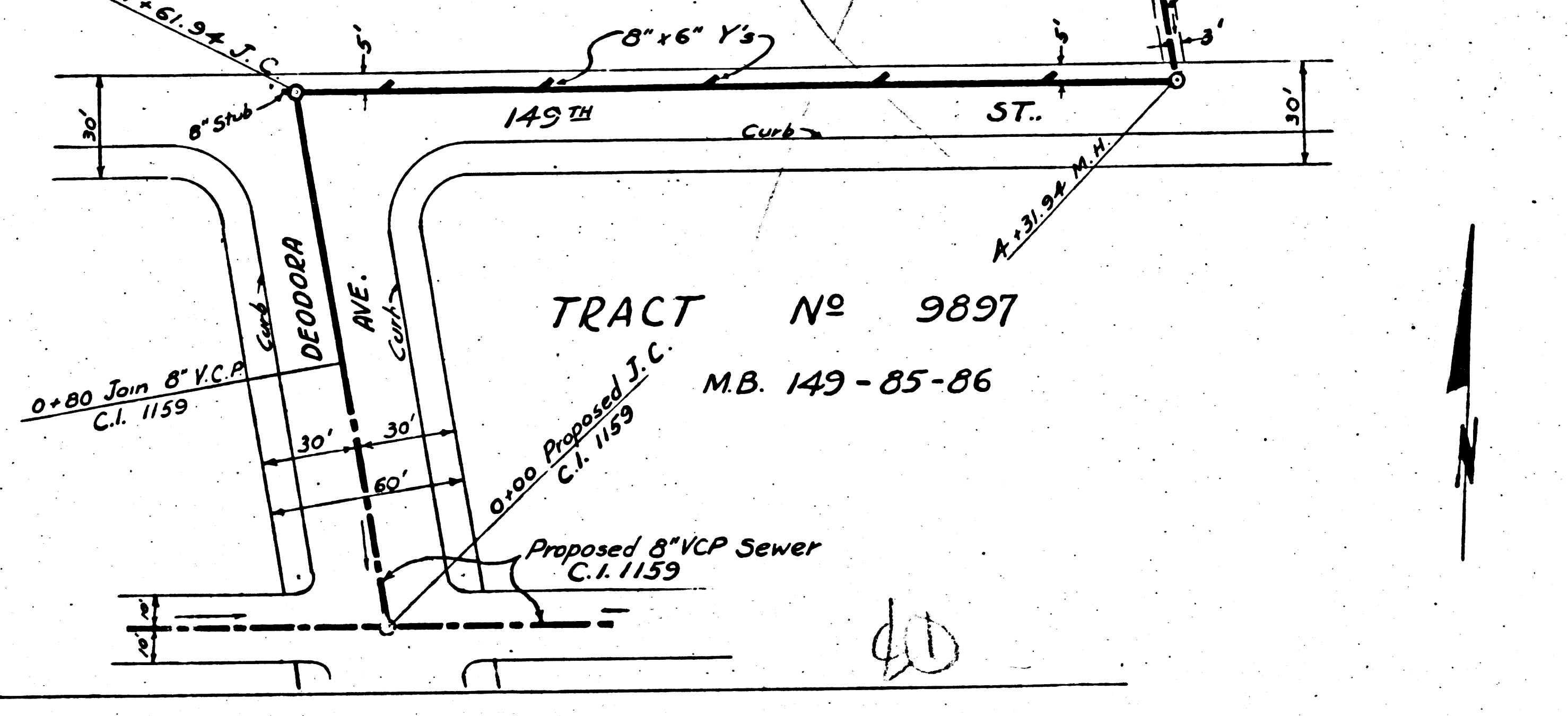
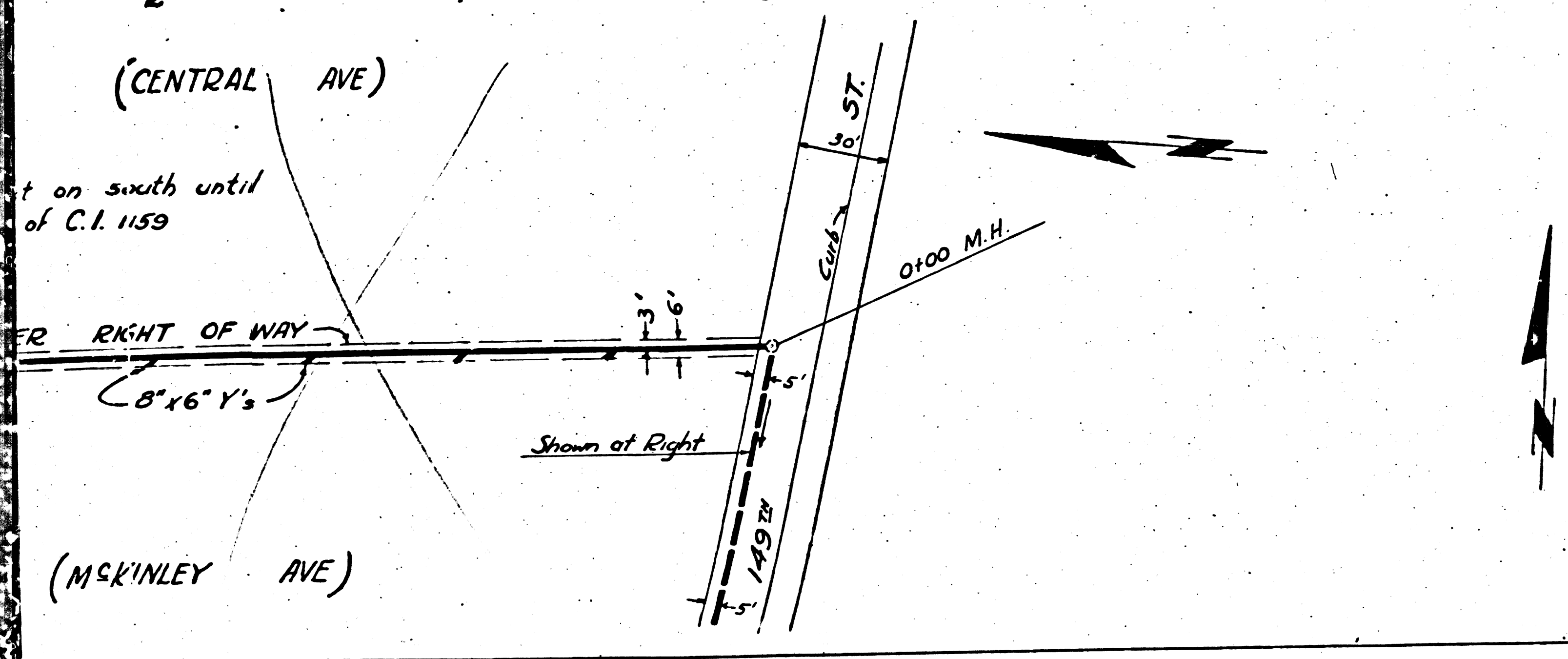
- (1) USE STANDARD MANHOLE FRAME AND COVER, S-A-111
- (2) USE STANDARD STRENGTH PIPE (EXCEPT AS NOTED)
- (3) USE CEMENT MORTAR FOR ALL VITRIFIED CLAY PIPE JOINTS.
- (4) RESURFACE ALL TRENCH WITHIN PAVED AREA TO MEET LOS ANGELES COUNTY ROAD DEPT. OR CALIFORNIA STATE HIGHWAY REQUIREMENTS.
- (5) CONSTRUCT HOUSE CONNECTIONS WITH INVERT AT PROPERTY LINE (8) FEET BELOW CURB GRADE (EXCEPT AS NOTED).
- (6) ENCASE FOUR FEET OF SEWER AT POINTS OF INTERFERENCE WITH POLES AS PER S-A-6.
- (7) ALL STRUCTURES SHALL BE BRICK SEWER STRUCTURES, S-G-104.
- (8) CONSTRUCT TOPS OF ALL STRUCTURES IN RIGHTS OF WAY 6" ABOVE FINISHED GRADE.

NOTE: NO REPRESENTATIVE OF THE COUNTY ENGINEER WILL SURVEY OR LAY OUT ANY PORTION OF THE WORK. THE OWNER OR HIS AUTHORIZED REPRESENTATIVE SHALL FURNISH THE COUNTY ENGINEER WITH GRAB SHEETS AND STATIONS OF ALL HOUSE CONNECTIONS AND Y-BRANCHES AND SHALL PROVIDE STAKES FOR THEM AT THEIR LOCATIONS WITH IDENTIFYING PLUMBER MARKS. ANY CHANGE OF LOCATION SHALL BE INDICATED IN WRITING BY THE OWNER OR HIS REPRESENTATIVE. NO REVISIONS SHALL BE MADE IN THESE PLANS WITHOUT APPROVAL OF THE COUNTY ENGINEER.

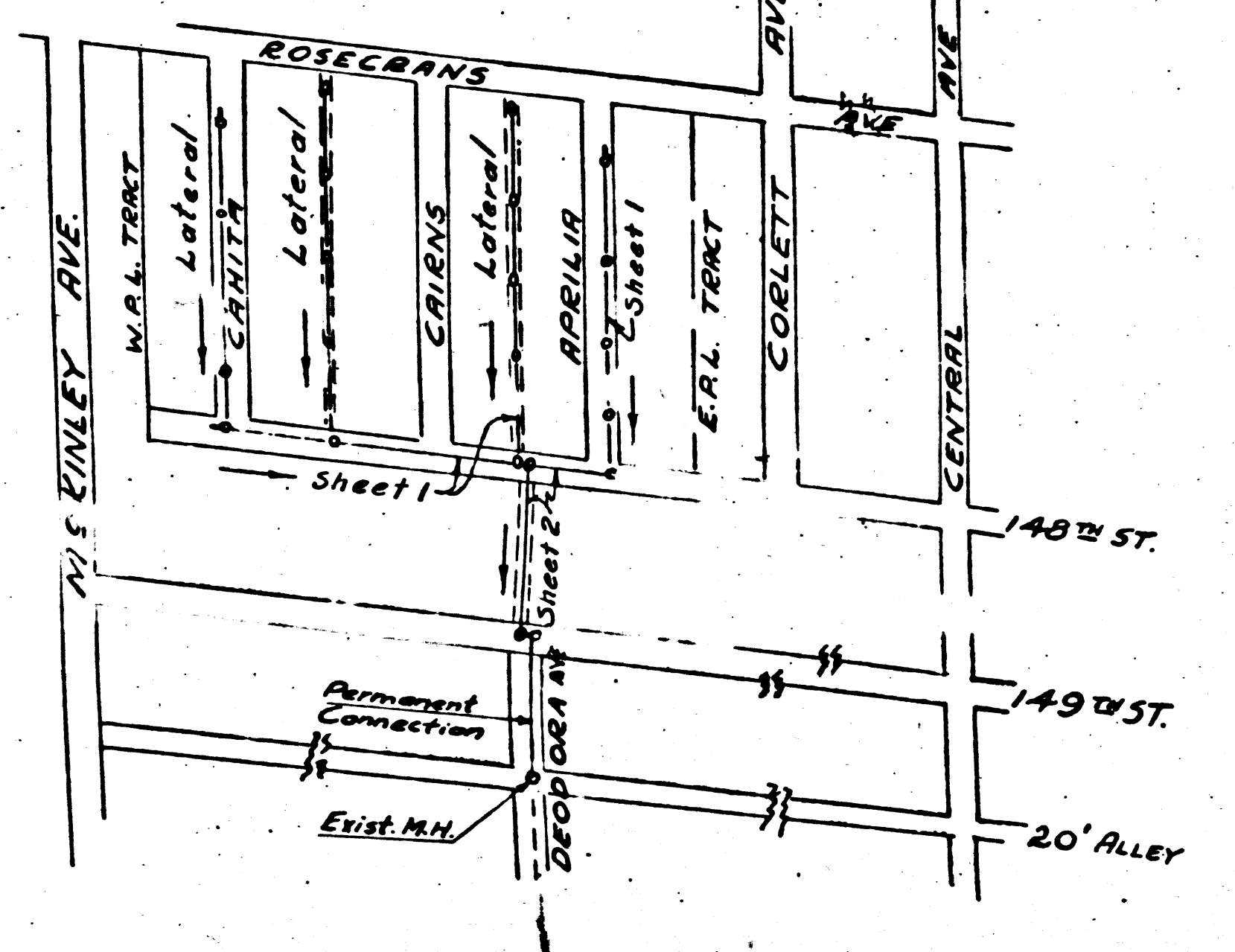
**PROFILE, ALIGNMENT AND GRADE OF
SANITARY SEWERS
TO BE CONSTRUCTED IN**

TRACT 13111
M.B. 149-85-86
AND IN A PORTION OF 148th ST.
WESTERLY FROM CORLETT AVE TO
AND
IN SANITARY SEWER RIGHT OF
WAY IN 149th ST BETWEEN DEODORA AVE
AND IN DEODORA AVE BETWEEN
PRIVATE CONTRACT NO. 51

PREPARED BY
J. J. [Signature]
CITY ENGINEER
LOS ANGELES COUNTY



INDEX MAP P.C. 517

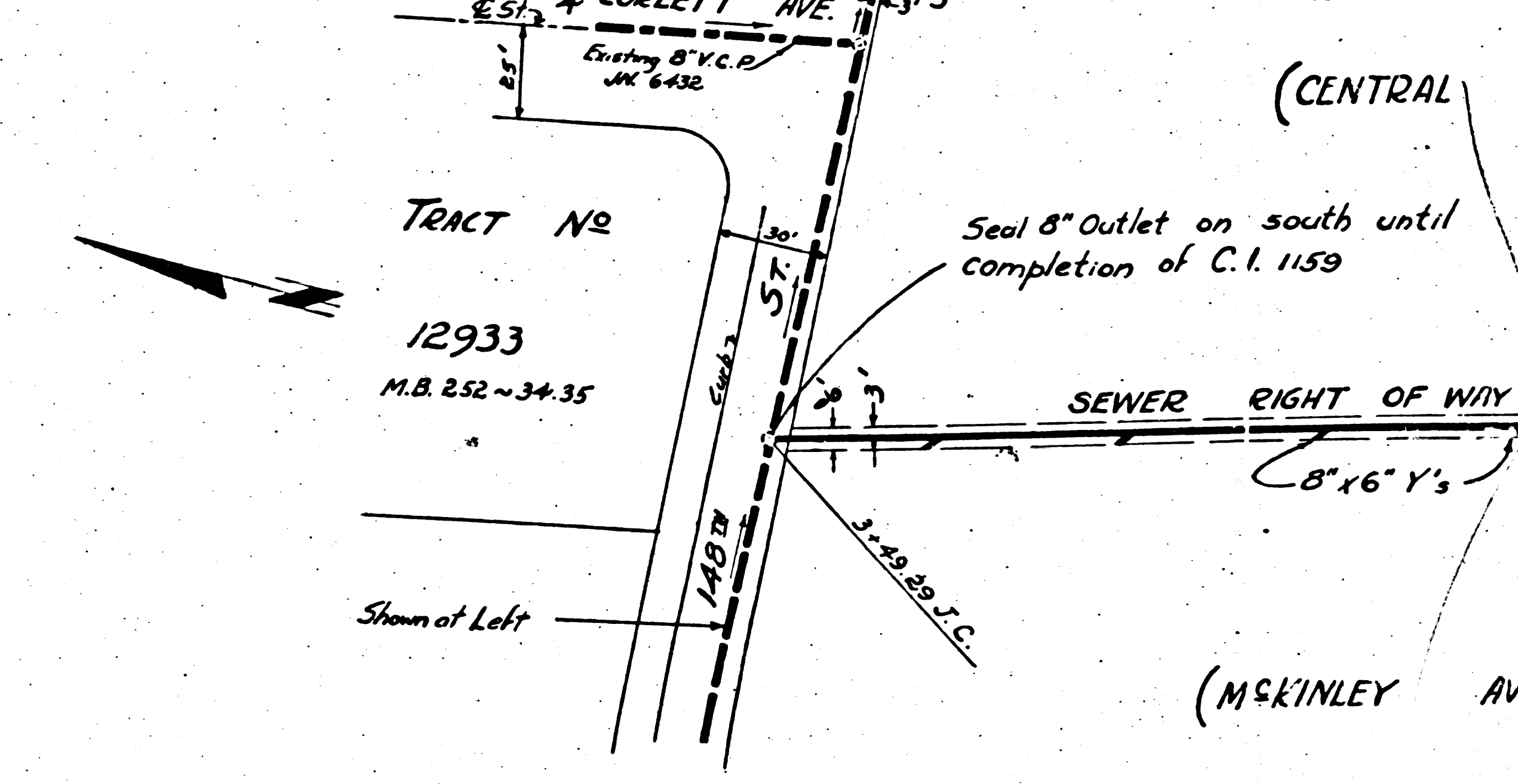
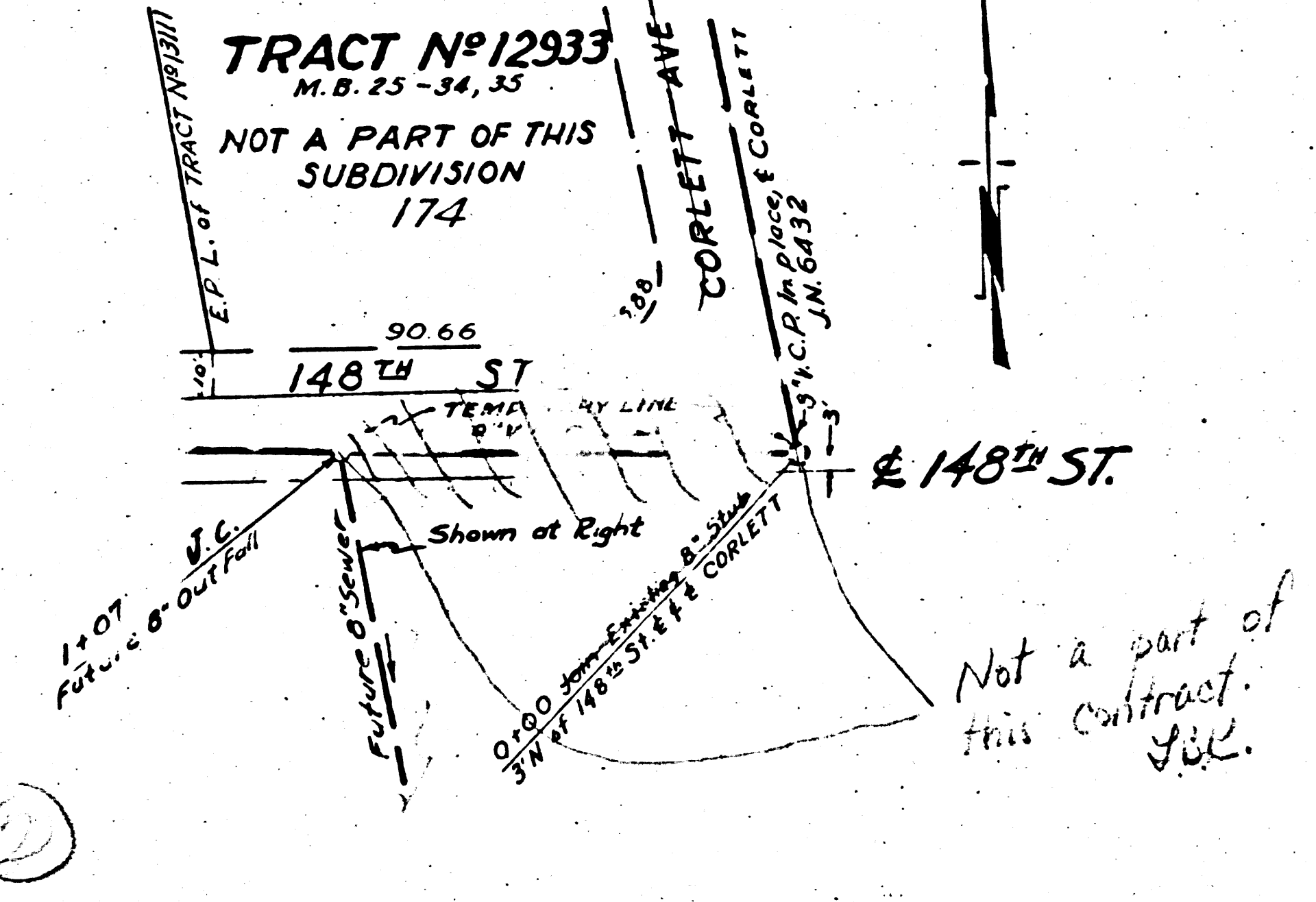
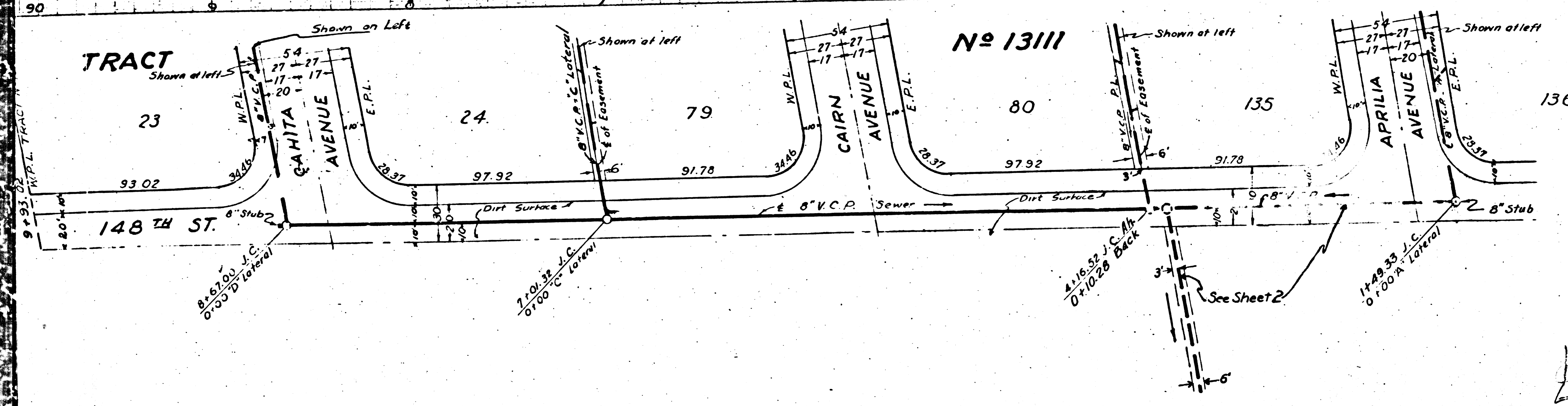
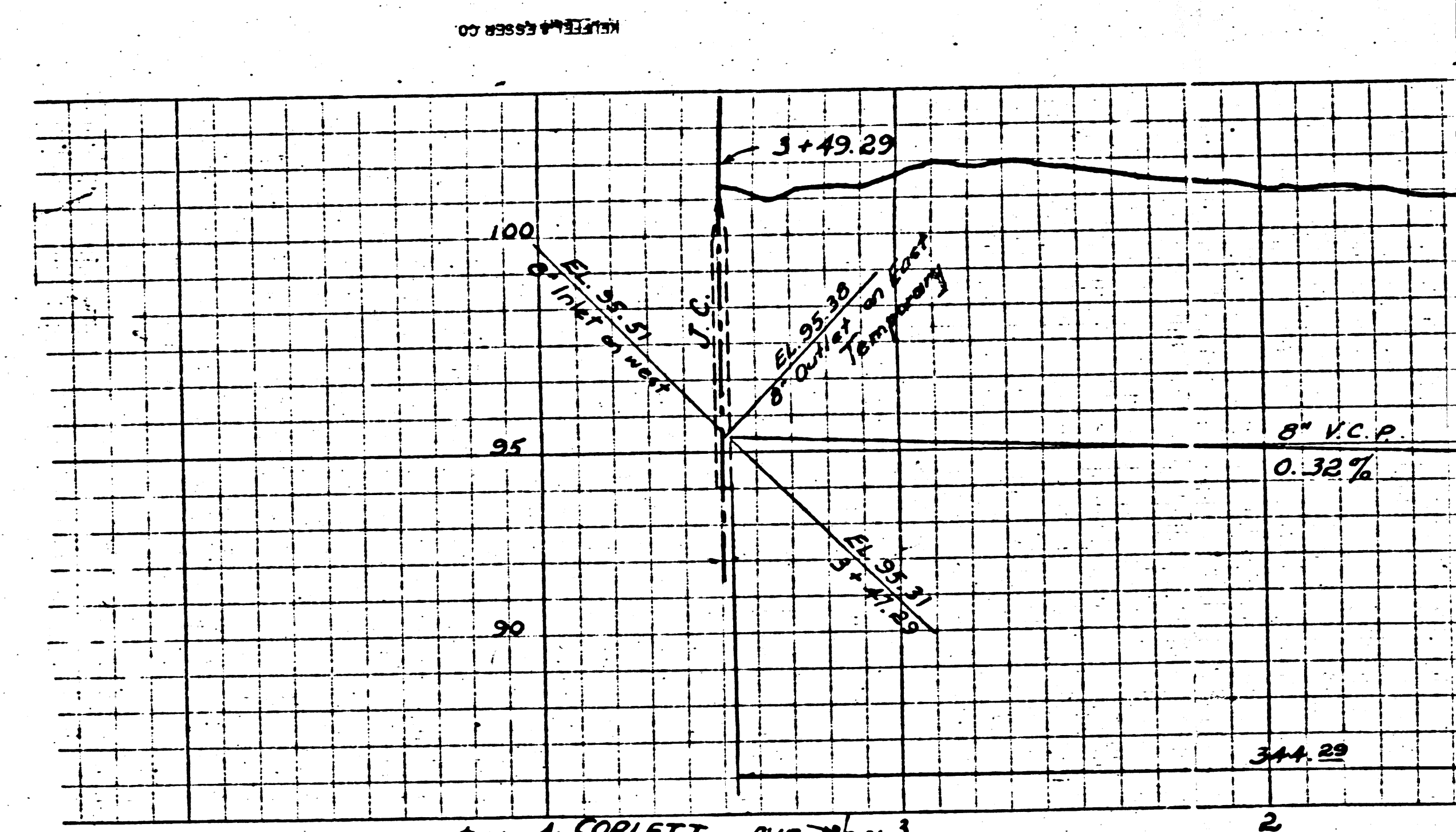
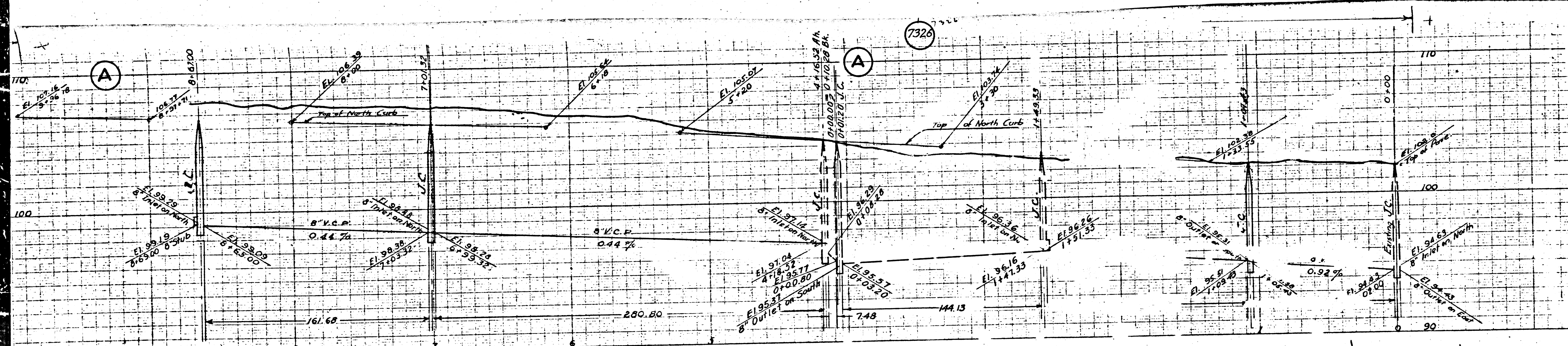


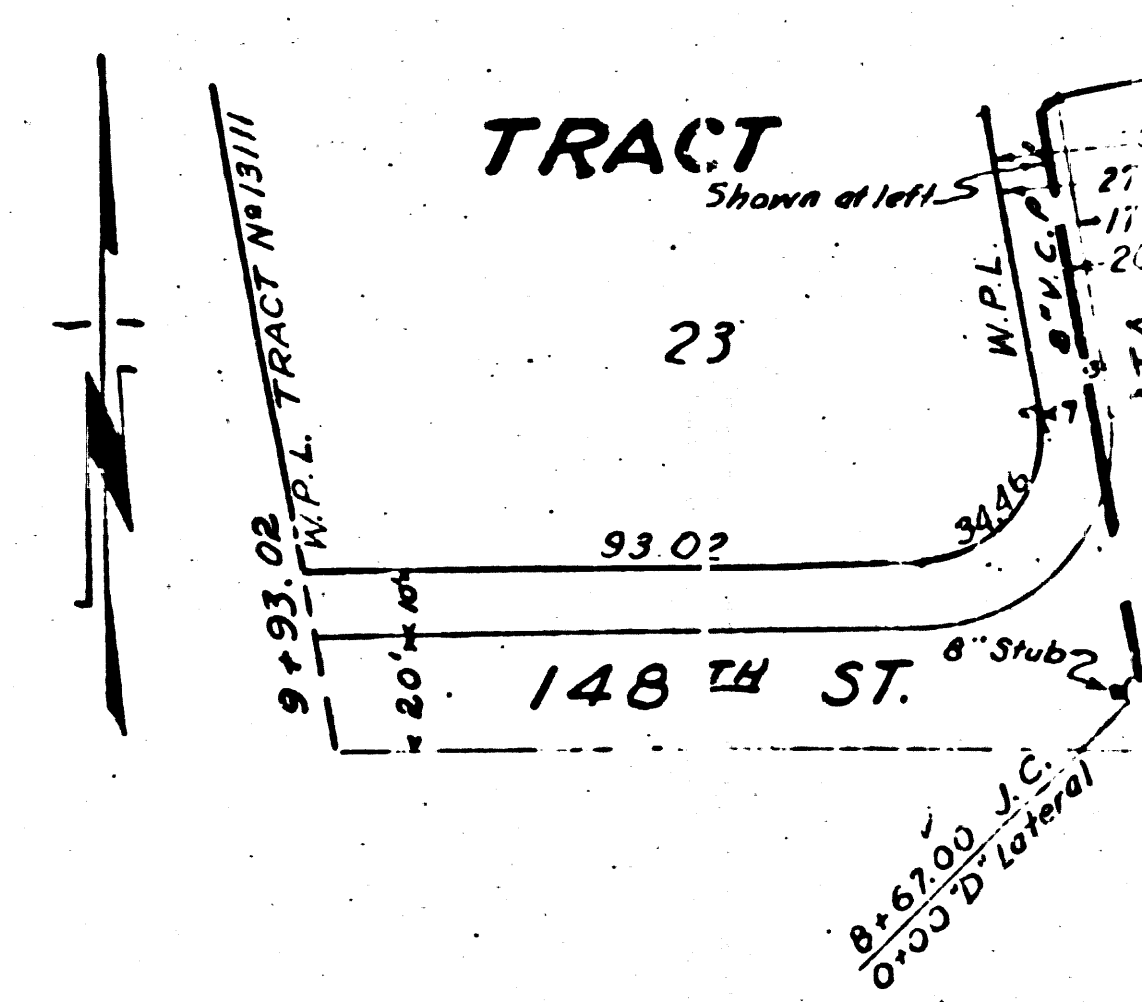
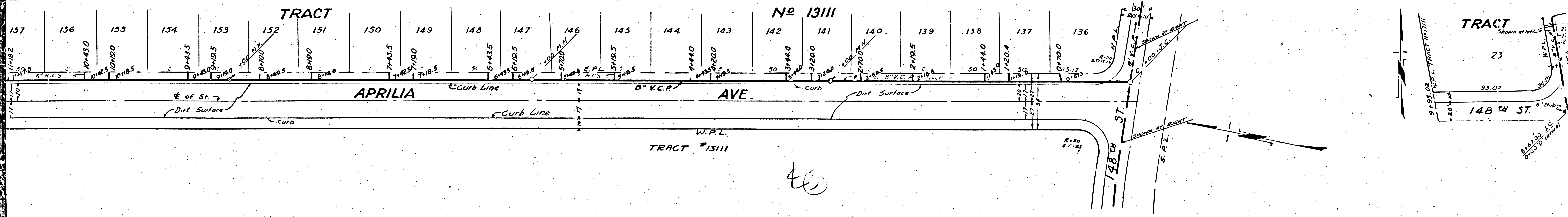
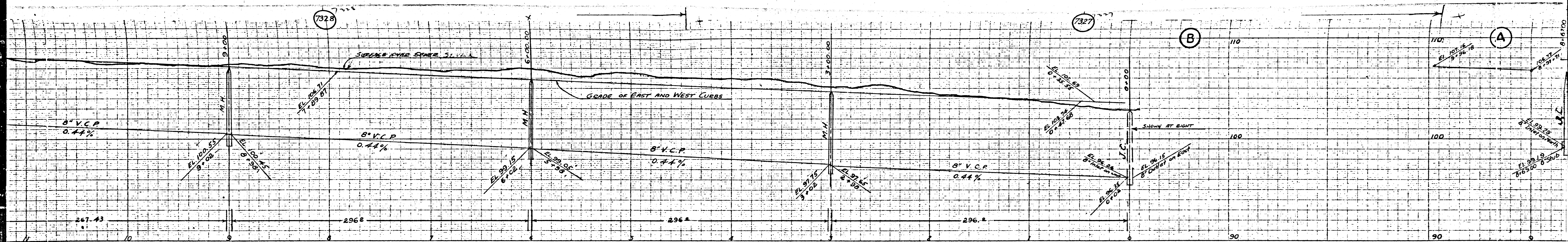
NOTE: GRADES TO WHICH THIS IMPROVEMENT
ARE SHOWN ON PLANS AND PROFILES, GRADE,
ELEV., CENTER LINE OF STREET OR
SHOWN BY CIRCLES ON PROFILES. ALL
NOTED POINTS THE GRADE SHALL BE SET
FROM TO A STRAIGHT LINE DRAWN BETWEEN S.
SEA LEVEL. ELEVATIONS ARE IN FEET ABOVE U.S.C.
OF THE SPECIFICATIONS.
THIS DRAWING AND THE DATA HEREON
WORK SHALL BE CONSTRUCTED ACCORDING
ON FILE IN THE OFFICE OF THE COUNTY ENGINEER
BEFORE WORK CAN BE STARTED. THE
TAIN A PERMIT TO EXCAVATE IN COUNTY
A COUNTY ROAD DEPT. 1154. SHALL OF
DEPOSIT WITH THE COUNTY ENGINEER,
SUFFICIENT TO COVER THE COST OF CON-
AND RECORD PLANS.
IF WORK IS TO BE DONE IN A STATE HIGHWAY
OBTAINING AFTER MAKING THE DEPOSIT WITH
COUNTY OF LOS ANGELES

FOR LEGEND
SEE PLANS S-3-3-64

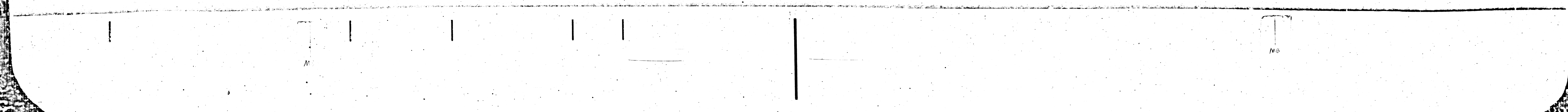
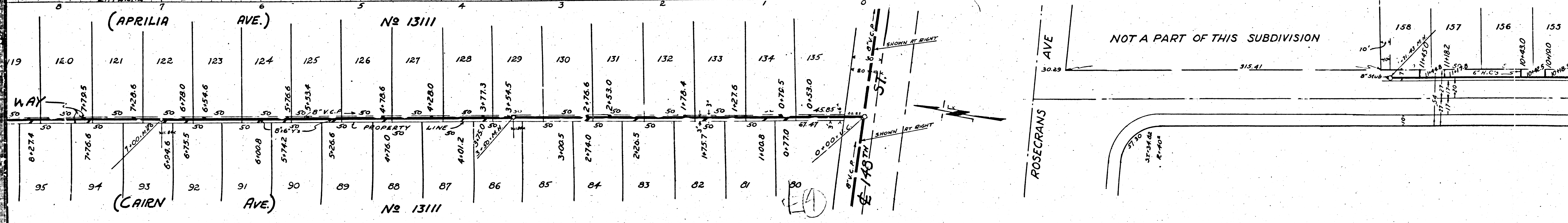
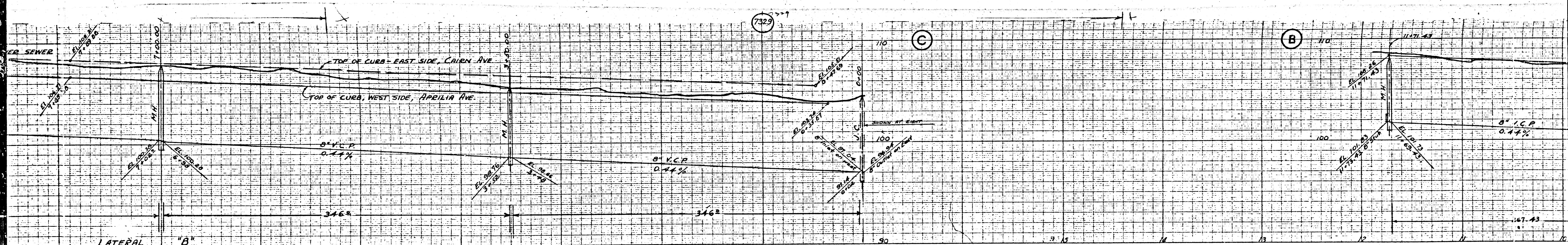
APPROVED BY
[Signature]
CITY ENGINEER

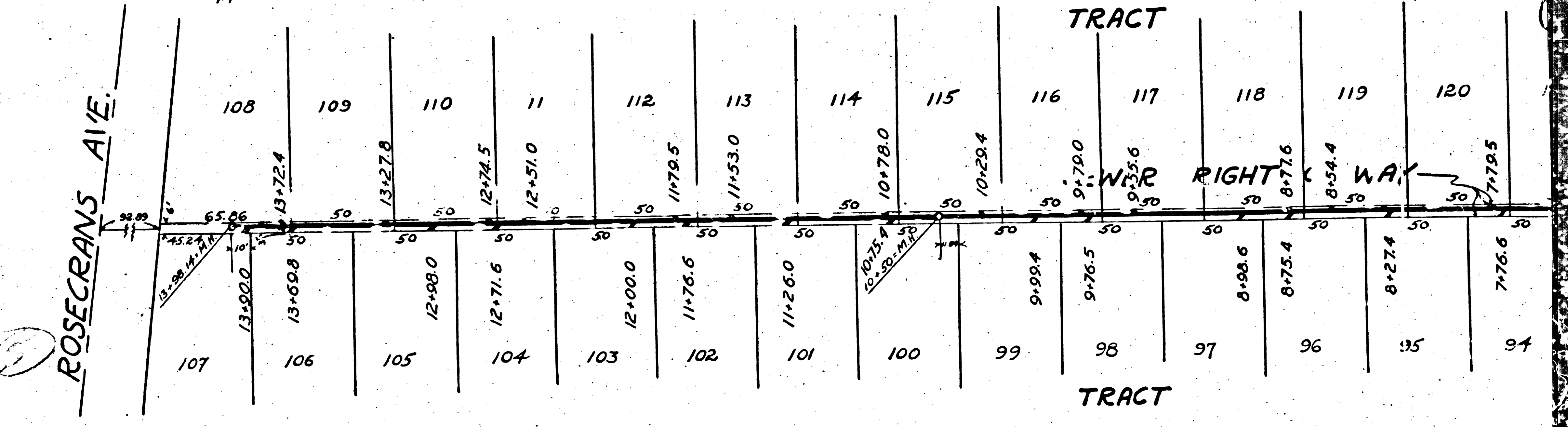
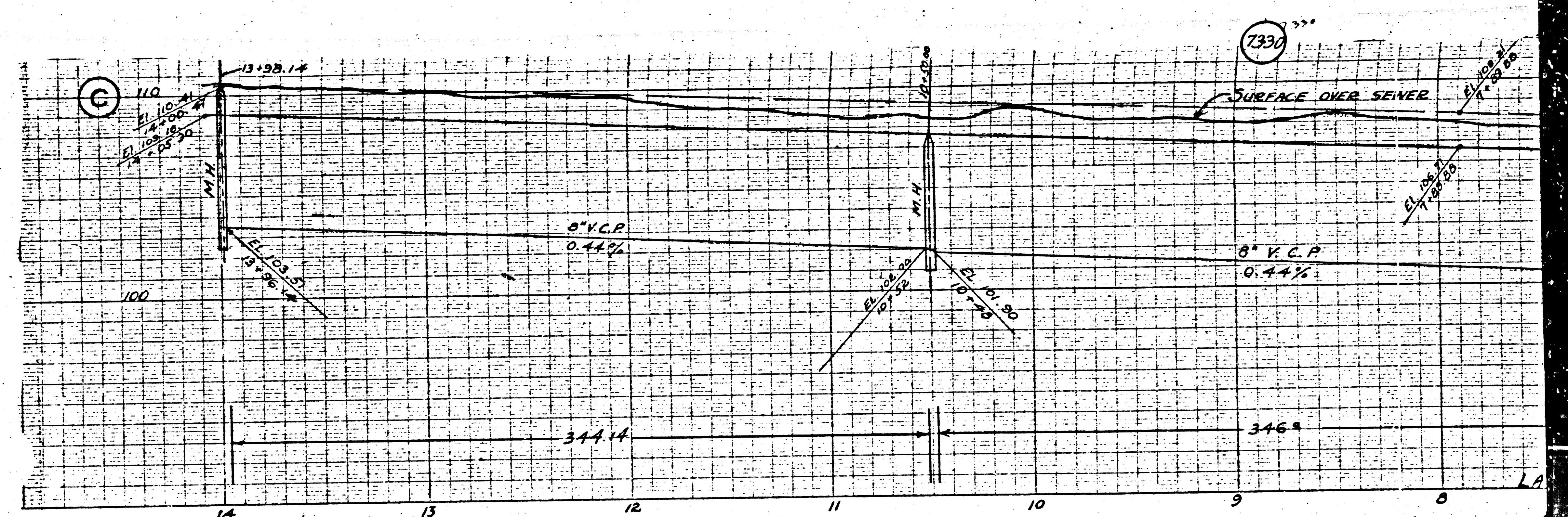
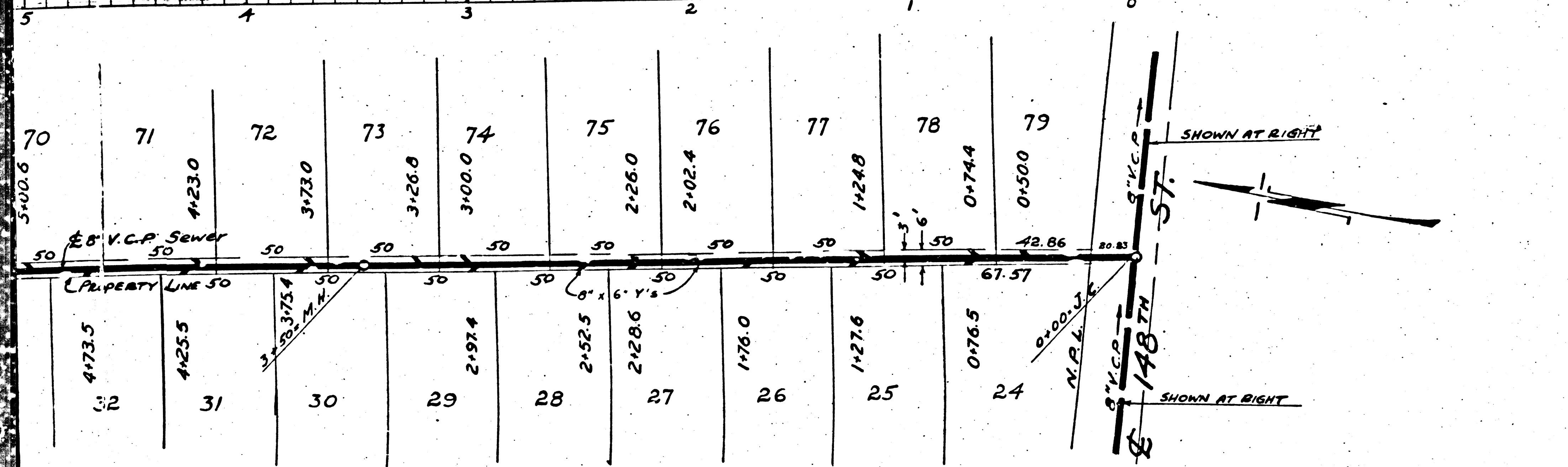
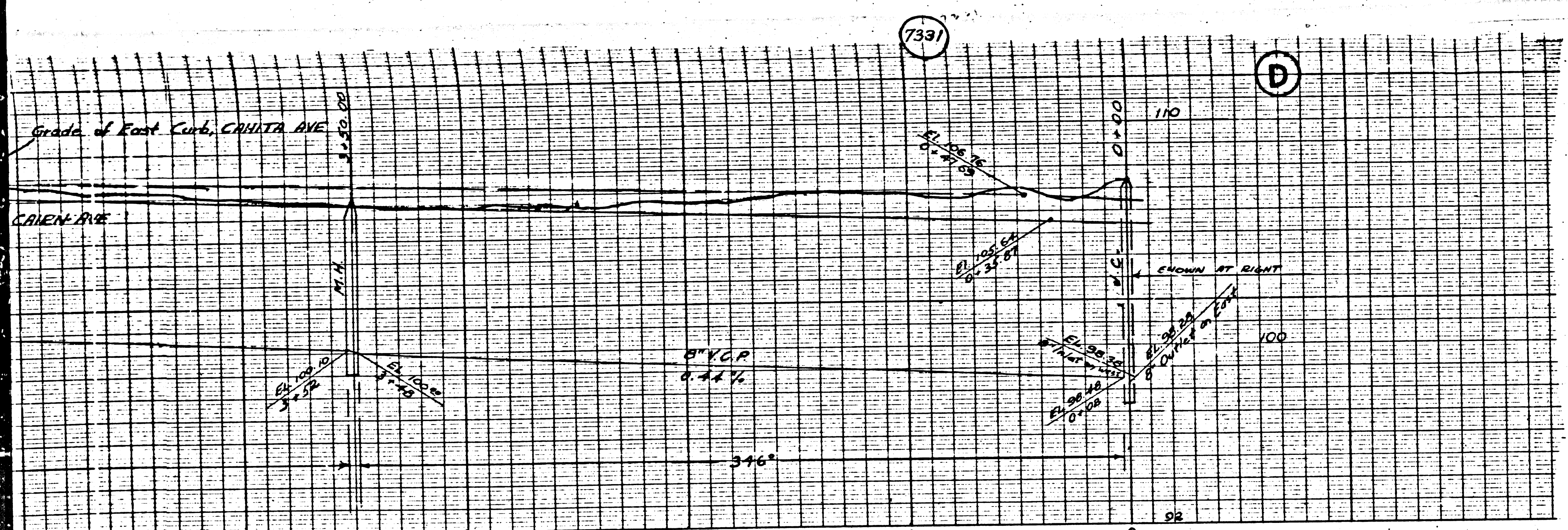
CHECKED BY
[Signature]
CITY ENGINEER





40





70	71	72	73	74	75	76	77	78	79
3+00.6	4+23.0	3+73.0	3+26.8	3+00.0	2+26.0	2+02.4	1+24.8	0+74.4	0+50.0
4+73.5	4+25.5	3+75.4	2+97.4	2+52.5	2+28.6	1+76.0	1+27.6	0+76.5	0+00.0
32	31	30	29	28	27	26	25	24	

108	109	110	111	112	113	114	115	116	117	118	119	120
13+98.14	13+72.4	13+27.8	12+74.5	12+51.0	11+78.5	11+53.0	10+78.0	10+29.4	9+79.0	8+54.4	8+27.4	7+76.6
13+98.14	13+00.0	13+00.0	12+98.0	12+71.6	12+00.0	11+76.6	11+26.0	10+76.4	9+98.4	9+76.5	8+98.6	8+75.4
107	106	105	104	103	102	101	100	99	98	97	96	95