

(1087)

BENCH MARK A COUNTY ROAD DEPT. BM
1411 IN WEST CURB OF LEMOLI AVE
5' SOUTH OF 80' SW CORNER SECTION
OF INTERSECTION OF COMPTON BLVD
LEMOLO AVE ELEV 445.62 (L.A. COUNTY
ROAD DEPT. DATUM) ELEV. 452.05 (M.D.M.)

- (1) USE STANDARD MANHOLE FRAMES AND COVERS 5'-0" DIA.
- (2) USE STANDARD STRENGTH PIPE.
- (3) USE CEMENT MORTAR FOR ALL INTERIRED CLAY PIPE JOINTS.
- (4) ALL STRUCTURES SHALL BE BRICK SEWER STRUCTURES 5'-0" DIA.
- (5) ENCASE FOUR FEET OF SEWER AT POINTS OF INTERFERENCE WITH POLES AS PER 5-4-6.

PROFILE, ALIGNMENT AND GRADE OF
SANITARY SEWER
 TO BE CONSTRUCTED IN
COMPTON BLVD
 BETWEEN ERIEL AVE AND ALLEY WEST OF CRENSHAW BLVD
 AND
ALLEY WEST OF CRENSHAW BLVD
 BETWEEN COMPTON BLVD AND 692 FEET NORTH OF COMPTON BLVD.

PRIVATE CONTRACT NO. 520
 W. & 23
 MARCH 20, 1947

PREPARED IN THE OFFICES OF
ENGINEERING SERVICE CORP.

BY: *J.P. Maxwell*
 REG. C.E. NO. 5883

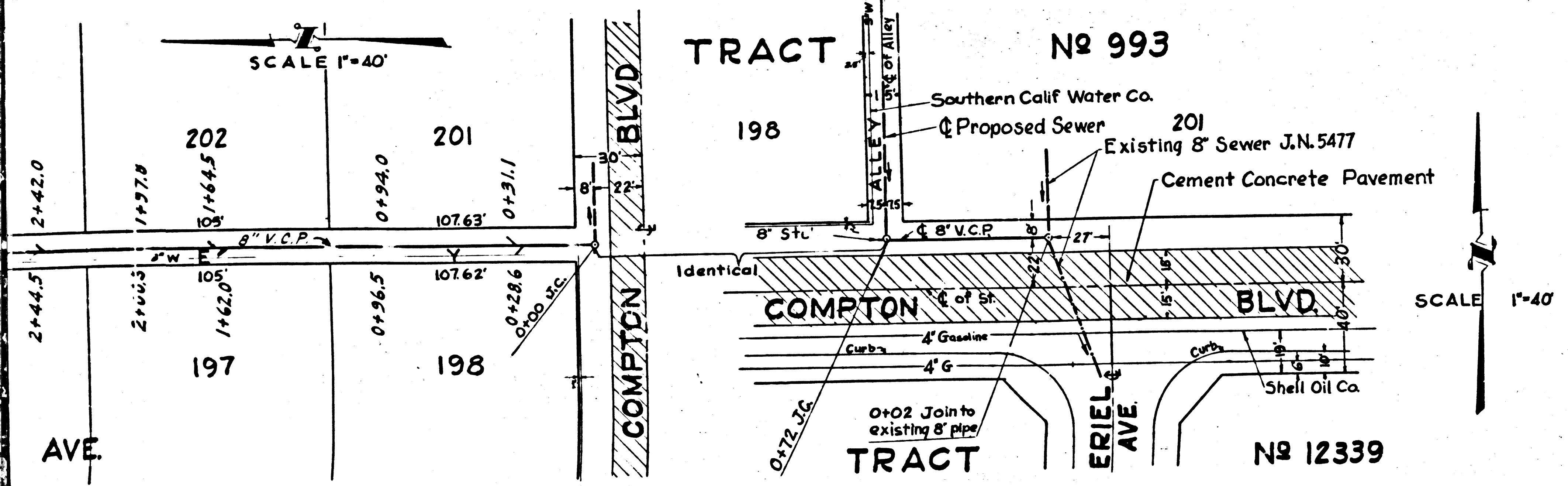
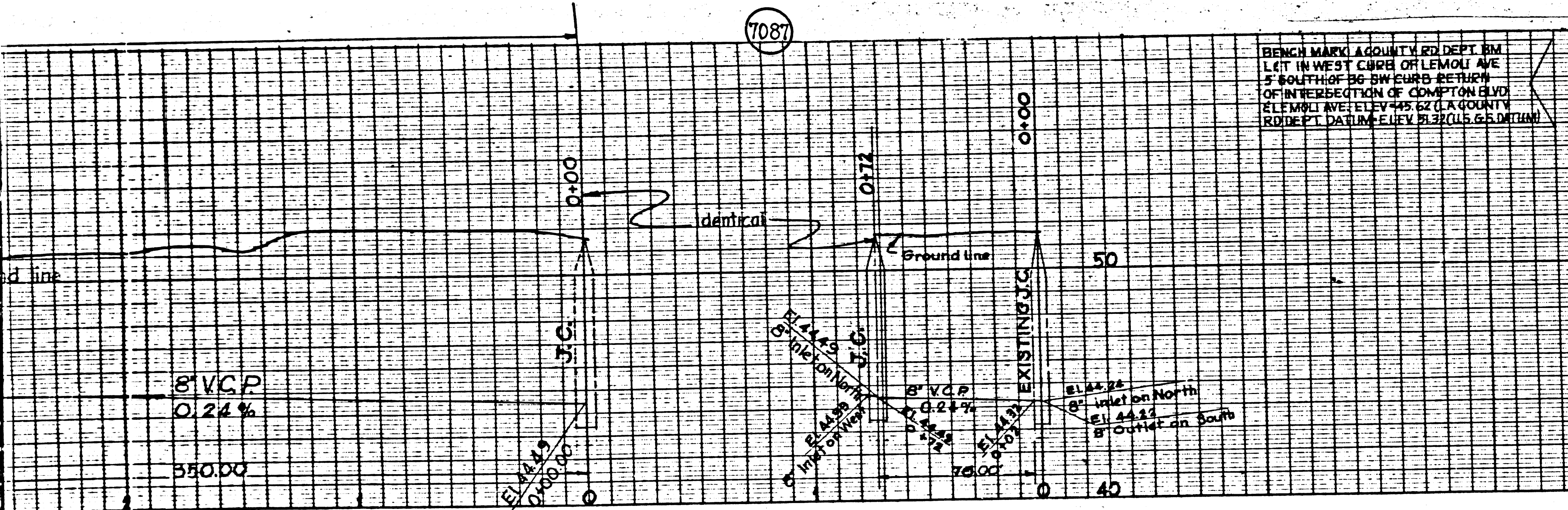
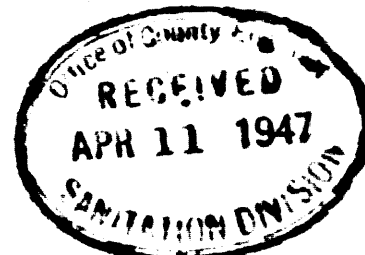
NOTE:
 THE REPRESENTATIVE OF THE COUNTY ENGINEER WILL SURVEY OR LAYOUT ANY PORTION OF THE WORK.
 THE OWNER OR HIS AUTHORIZED REPRESENTATIVE SHALL FURNISH THE COUNTY ENGINEER WITH GRADE SHEETS
 AND STATIONS OF ALL HOUSE CONNECTIONS AND BRANCHES AND SHALL PROVIDE STAKES FOR THEM AT THEIR
 PROPER LOCATIONS WITH ESTIMATING PLAINLY MARKED. ANY CHANGE OF LOCATION SHALL BE REQUESTED IN
 WRITING BY THE OWNER OR HIS REPRESENTATIVE.
 NO REVISIONS SHALL BE MADE IN THESE PLANS WITHOUT APPROVAL OF THE COUNTY ENGINEER.

NOTE:
 GRADES TO WHICH THIS IMPROVEMENT IS TO BE CONSTRUCTED ARE SHOWN ON PLAIN PROFILE.
 GRADE POINTS FOR TOP OF CURB, CENTERLINE OF STREET OR CENTERLINE OF ALLEY ARE SHOWN BY
 CIRCLES ON PROFILE. AT ALL POINTS BETWEEN DESIGNATED POINTS THE GRADE SHALL BE ESTABLISHED
 SO AS TO CONFORM TO A STRAIGHT LINE DRAWN BETWEEN SAID DESIGNATED POINTS.
 ELEVATIONS ARE IN FEET ABOVE U.S. DATUM OR MEAN SEA LEVEL.
 THIS DRAWING AND THE DATA HEREON ARE HEREBY MADE A PART OF THE SPECIFICATIONS
 WORK SHALL BE CONSTRUCTED ACCORDING TO SPECIFICATIONS ON FILE IN THE OFFICE OF THE
 COUNTY ENGINEER AND SHALL BE PROSECUTED ONLY IN THE PRESENCE OF THE COUNTY ENGINEER.
 BEFORE WORK CAN BE STARTED, THE CONTRACTOR MUST OBTAIN A PERMIT TO EXCAVATE IN
 COUNTY STREETS FROM THE L.A. COUNTY ROAD DEPT., 1104 HALL OF RECORDS, AND MAKE A DEPOSIT
 WITH THE COUNTY ENGINEER, 700 FASHION LEAGUE BUILDING, SUFFICIENT TO COVER THE COST OF
 CONSTRUCTION INSPECTION AND RECORD PLANS.
 IF WORK IS TO BE DONE IN A STATE HIGHWAY, A PERMIT MUST BE OBTAINED FROM THE STATE OF
 CALIFORNIA, DIVISION OF HIGHWAYS, 808 STATE BUILDING AFTER MAKING THE DEPOSIT WITH COUNTY
 ENGINEER.

COUNTY OF LOS ANGELES, CALIFORNIA

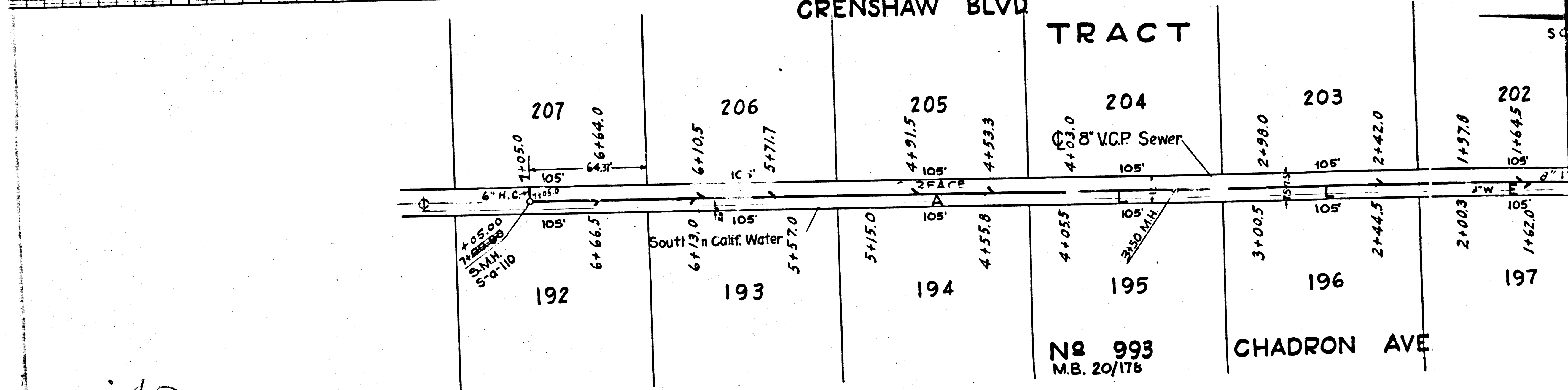
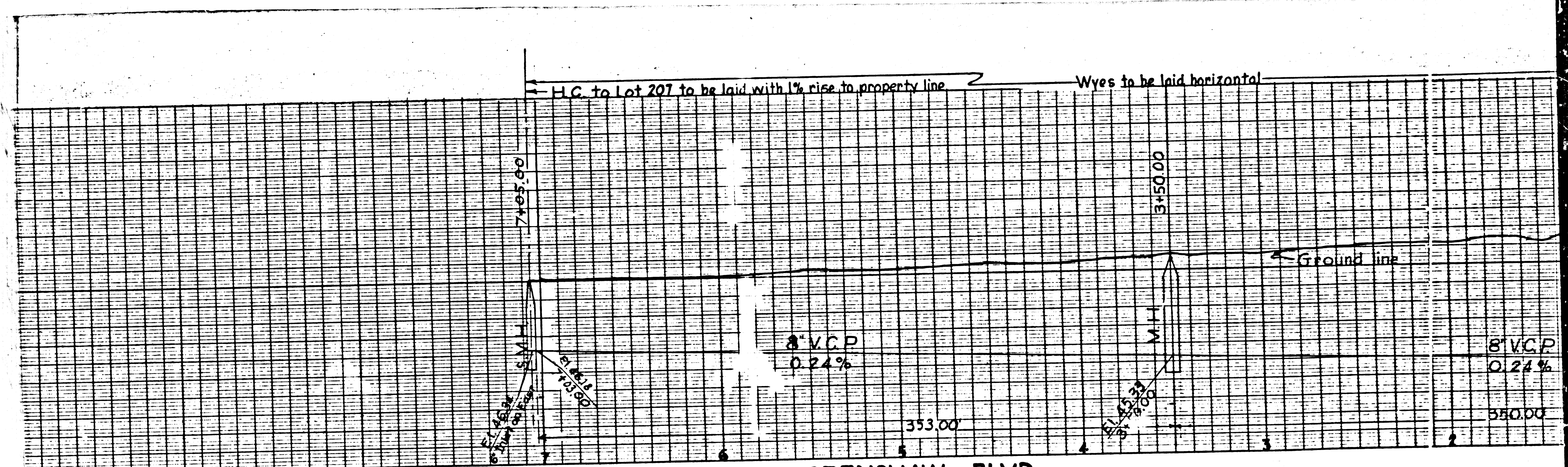
APPROVED: *Alfred Jones*
 COUNTY ENGINEER
 APPROVED: *Samuel Lewis*
 CHIEF ENGINEER OF COUNTY
 SANITATION DISTRICT NOS.

CHECKED BY: *John B. King* March 28, 1947
 OFFICE OF COUNTY ENGINEER REG. C.E. NO. 6622



LD

Final Ck. T.I.P. 7/15/47



20