

**NOTES.**  
 Use L.A. County Standard Manholes S-a-104.  
 Use Standard Strength Pipe.  
 Use Cement Mortar for all Vitrified Clay Pipe Joints.  
 Resurface all Trenches within paved areas, to meet L.A. County Road Dept. requirements.  
 House Connections to be constructed with inverts at Property Line, 5' below Curb Grade, except as noted.  
 Use Standard Manhole Frame and Covers, S-a-117.

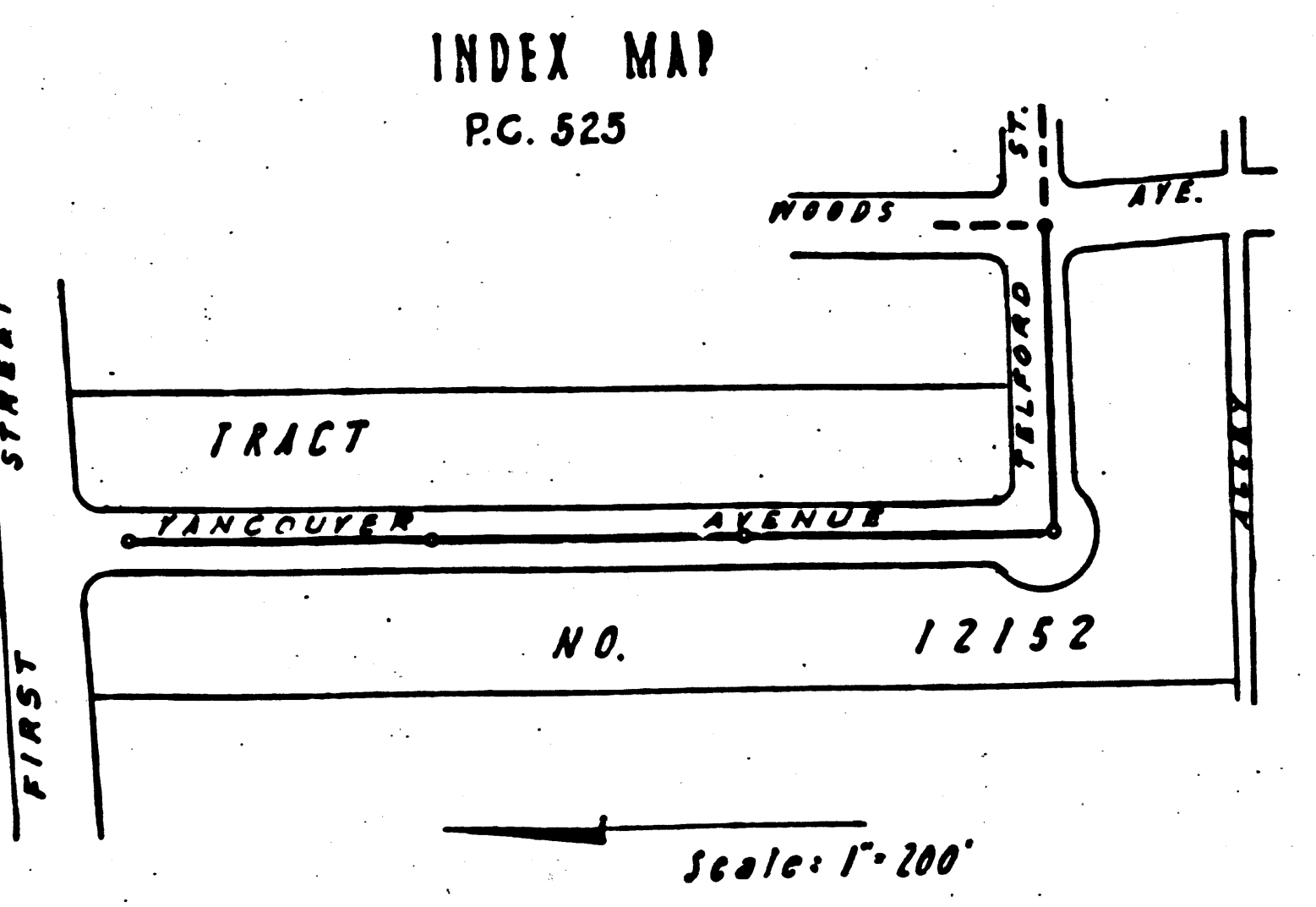
NOTE: NO REPRESENTATIVE OF THE COUNTY ENGINEER WILL SURVEY OR LAY OUT ANY PORTION OF THE WORK. THE OWNER OR HIS AUTHORIZED REPRESENTATIVE SHALL FURNISH THE COUNTY ENGINEER WITH LEAD SHEETS AND STAKING OF ALL HOUSE CONNECTIONS AND MANHOLES AND SHALL PROVIDE STAKES FOR THEM AT THEIR PROPER LOCATIONS WITH STATIONING PLAINLY MARKED. ANY CHANGE OF LOCATION SHALL BE REQUESTED IN WRITING BY THE OWNER OR HIS REPRESENTATIVE. NO REVISIONS SHALL BE MADE IN THIS PLAN, WITHOUT APPROVAL OF THE COUNTY ENGINEER.

All Elevations are referred to L.A. County Bench Mark No 20-201, Cross on Belt, S.E. Leg. of Southern Calif. Edison Co. Tower at S.W. Cor. of Tract No 2784, El. 222.56

PROFILE, ALIGNMENT AND GRADE OF  
**SANITARY SEWERS**  
 TO BE CONSTRUCTED IN  
**TELFORD STREET**  
 BETWEEN VANCOUVER AVE & WOODS AVE.  
 AND IN  
**VANCOUVER AVENUE**  
 BETWEEN FIRST ST. & TELFORD ST.  
 IN TRACT NO 12152 M.B.

PRIVATE CONTRACT NO 525  
 W.S. 36  
 SHEET 1 OF 1 SHEETS

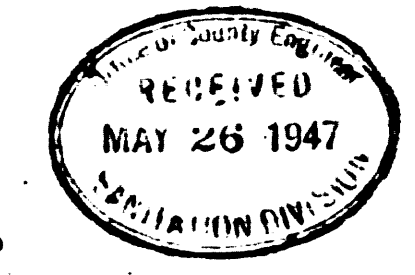
PREPARED IN THE OFFICES OF  
 George H. Adams  
 By: *George H. Adams*  
 E.E. 132



**NOTES**  
 Grades to which this Improvement is to be constructed are shown on Profile. Grade Points for top of Curb are shown by circles on Profile.  
 At all Points between designated points the grade shall be established so as to conform to a straight line drawn between said designated points.  
 Elevations are in feet above U.S.G.S. Datum or Mean Sea Level.  
 This Drawing and the data hereon are hereby made a part of Specifications.  
 Work shall be constructed according to Specifications on file in the Office of the County Engineer and shall be protected only in the presence of the County Engineer.  
 Before work can be started the Contractor must obtain a Permit to excavate in County Streets from the L.A. County Road Dept., 1104 Hall of Records and make a deposit with the County Engineer, 700 Fashion League Bldg. sufficient to cover the cost of construction Inspection and Record Plans.  
 COUNTY OF LOS ANGELES, CALIFORNIA.

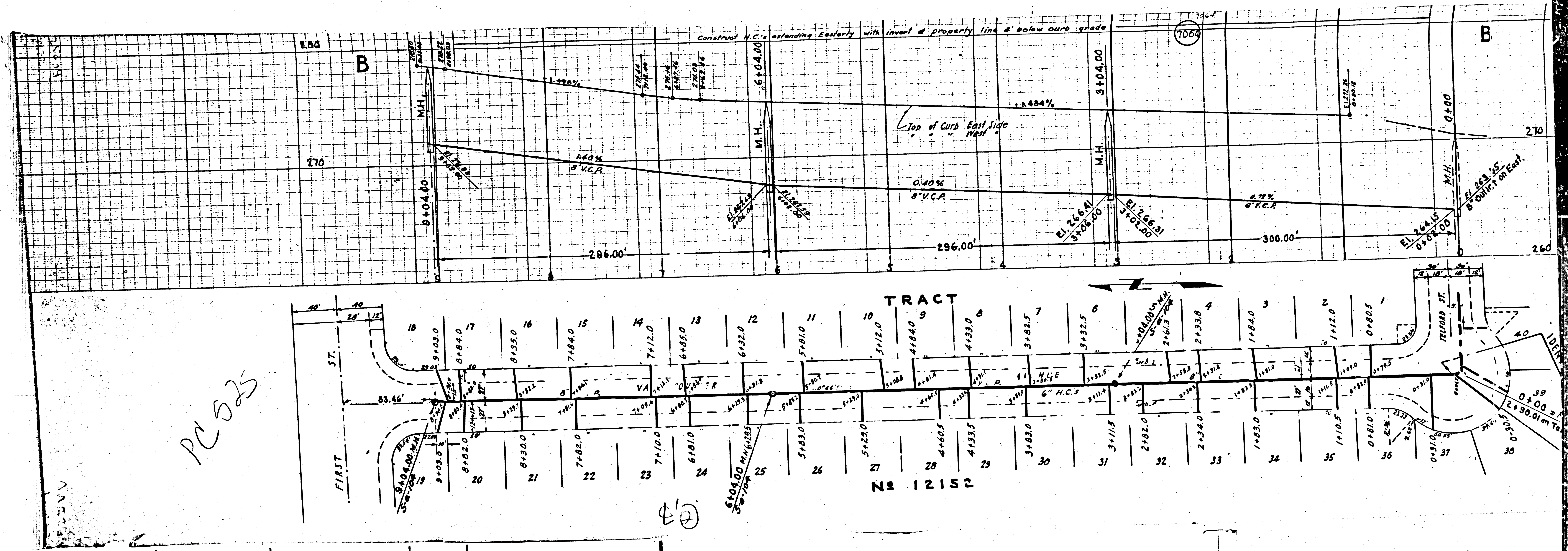
APPROVED: *George H. Adams*  
 CHIEF DEPUTY COUNTY ENGINEER.  
 APPROVED: *George H. Adams*  
 CHIEF ENGR. CO. SAN. DIST. NO. 2

CHECKED BY: *George H. Adams* May 12, 1947  
 Office of County Engineer, R.E. 6622



EO

Final CR TR 7/2/47



PC 525

43

N: 12152