

NEW YORK  
KENNEDY & CO.

NEW YORK  
KENNEDY & CO.

NEW YORK  
KENNEDY & CO.

NEW YORK  
KENNEDY & CO.

NEW YORK  
KENNEDY & CO.

8066

- Note:
1. Use standard manhole frames and covers S-a-111
  2. Use standard strength pipe
  3. Use cement mortar for all vitrified clay pipe joints
  4. Resurface all trench within paved areas to meet Los Angeles Co. Rd. Dept. requirements.
  5. All structures shall be brick sewer structures S-a-104 except as noted.

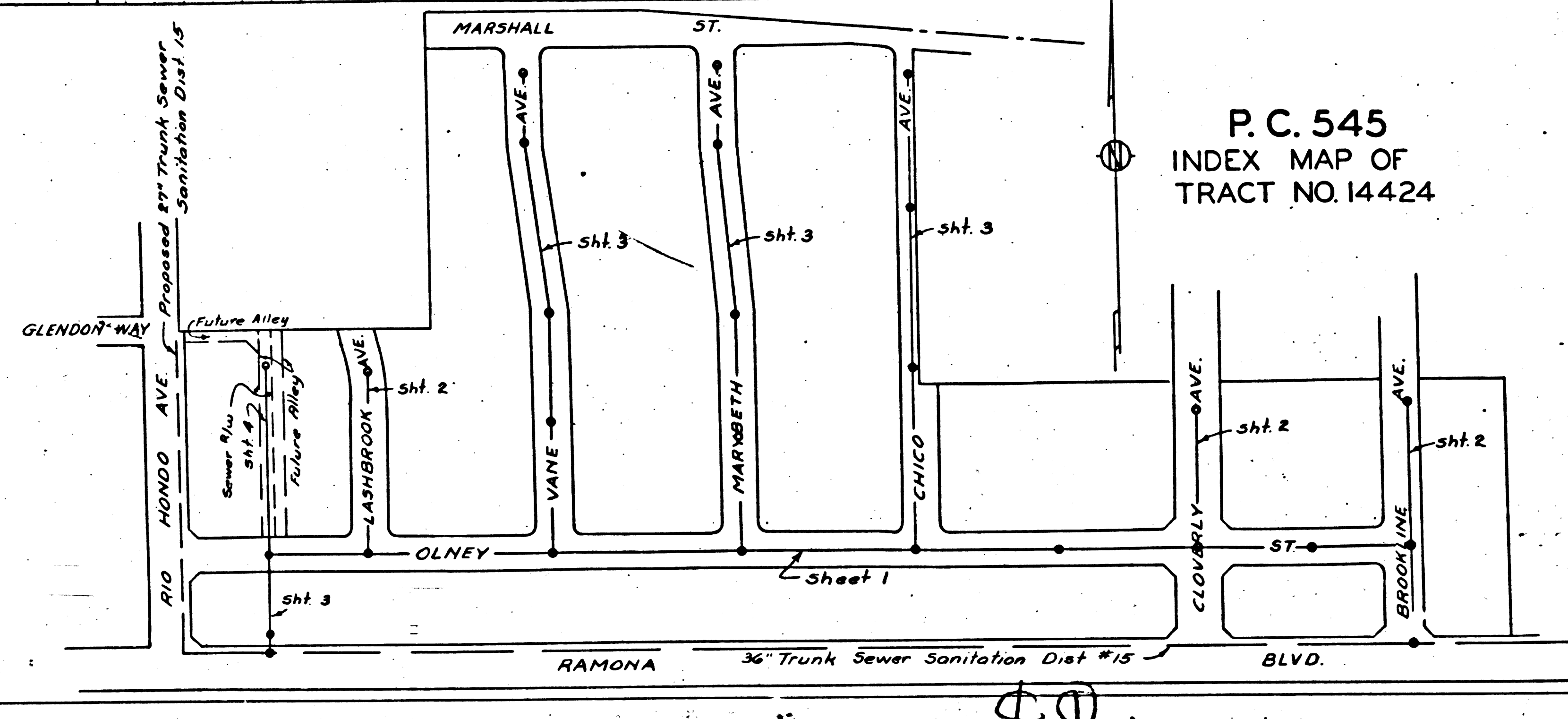
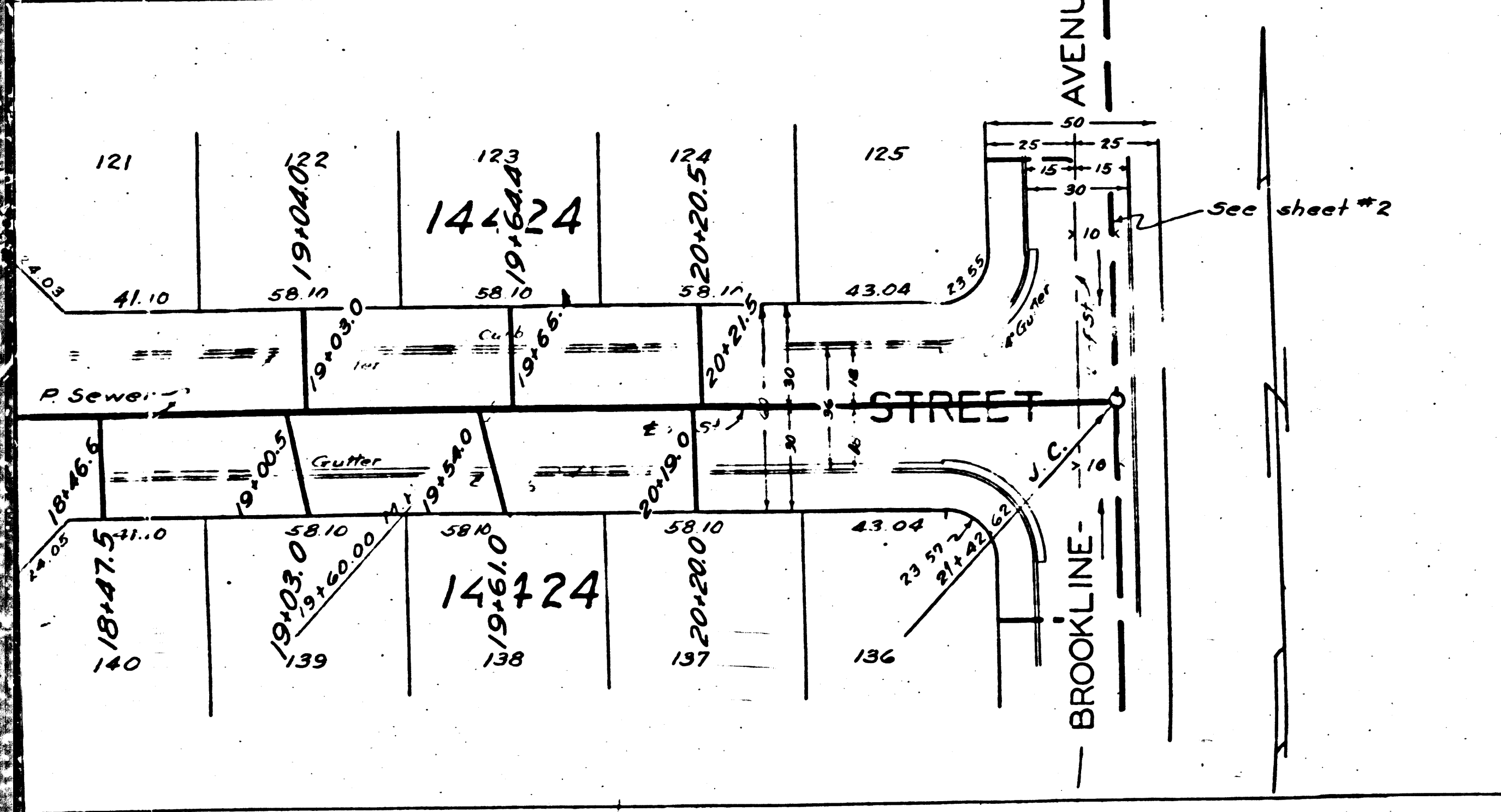
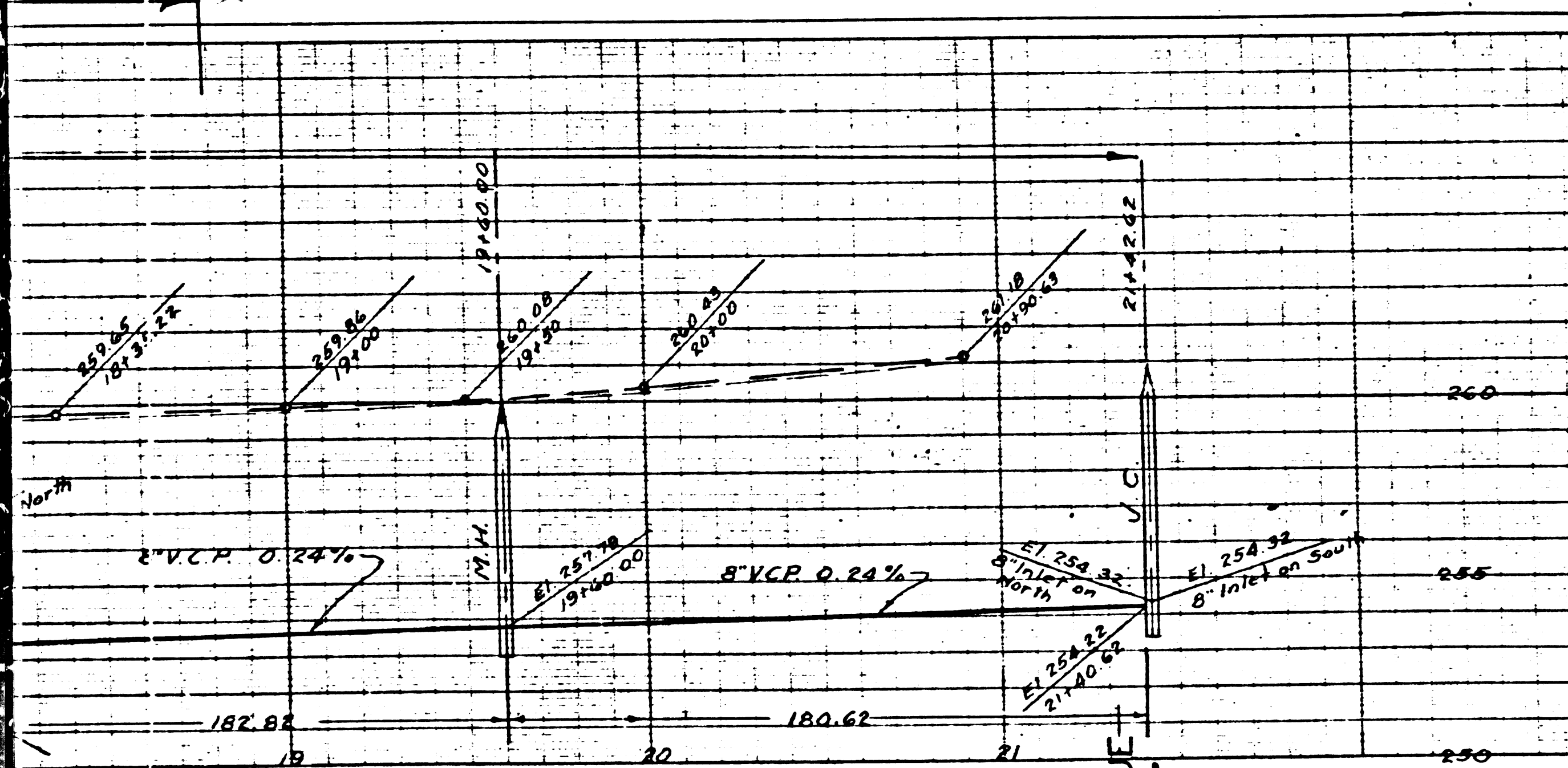
PROFILE ALIGNMENT AND GRADE OF  
**SANITARY SEWERS**  
 TO BE CONSTRUCTED IN  
**OLNEY STREET**  
 BETWEEN RIO HONDO AVE. & BROOKLINE AVE.  
 PRIVATE CONTRACT NO. 545

R.R. Spike in South Side of Guy Park No. 583822  
 of Northeast corner of Rio Hondo Ave and Broadway Blvd.  
 City of Los Angeles

W.S. 44  
 SHEET 1 OF 4 SHEETS

Note: No representative of the County Engineer will survey or lay out any portion of the work. The owner or his authorized representative shall furnish the County Engineer with grade sheets and stations at all house connections and Y branches and shall provide stakes for them at their proper locations with stationing plainly marked. Any change of location shall be requested in writing by the owner or his representative. No revisions will be made in these plans without approval of the County Engineer.

PREPARED BY Gen. W. Moore R.E. 1157  
 FOR LEGEND SEE PLAN NO. 54-68



- Note:
1. Grades to which this improvement is to be constructed are shown on plans and profile.
  2. Grade points for top of curb, center line of street or center line of alley are shown by circles on profiles. At all points between designated points the grade shall be established as to conform to a straight line drawn between said designated points.
  3. Elevations are in feet above U.S.G.S. datum or mean sea level.
  4. This drawing and the data hereon are hereby made a part of the specifications.
  5. Work shall be constructed according to specifications on file in the office of the County Engineer and shall be prosecuted only in the presence of the County Engineer.
  6. Before work can be started the contractor must obtain a permit to excavate in County streets from the L.A. Co. Rd Dept., 1104 Hall of Records, and make a deposit with the County Engineer, 700 Fashion League Bldg., sufficient to cover the cost of construction inspection and record plans.
  7. If work is to be done in a State Highway a permit must be obtained from the State of California, Division of Highways, 808 State Bldg., after making the deposit with the County Engineer.

County of Los Angeles  
 Approved Edmund  
 County Engineer  
 Approved Wesley  
 Chief Engineer of County  
 Sanitation District No. 15  
 Checked By J. D. [Signature]  
 Office of the Co. Engineer  
 R.E. No. 6322  
 Date Nov. 28, 1928

Final C&T. P. 6/2/28

NO. 1000  
 1/2" = 10' HORIZ.  
 1" = 10' VERT.  
 1908

MEM. BOOK  
 KENNEL & SOREN CO.

NO. 1000  
 1/2" = 10' HORIZ.  
 1" = 10' VERT.  
 1908

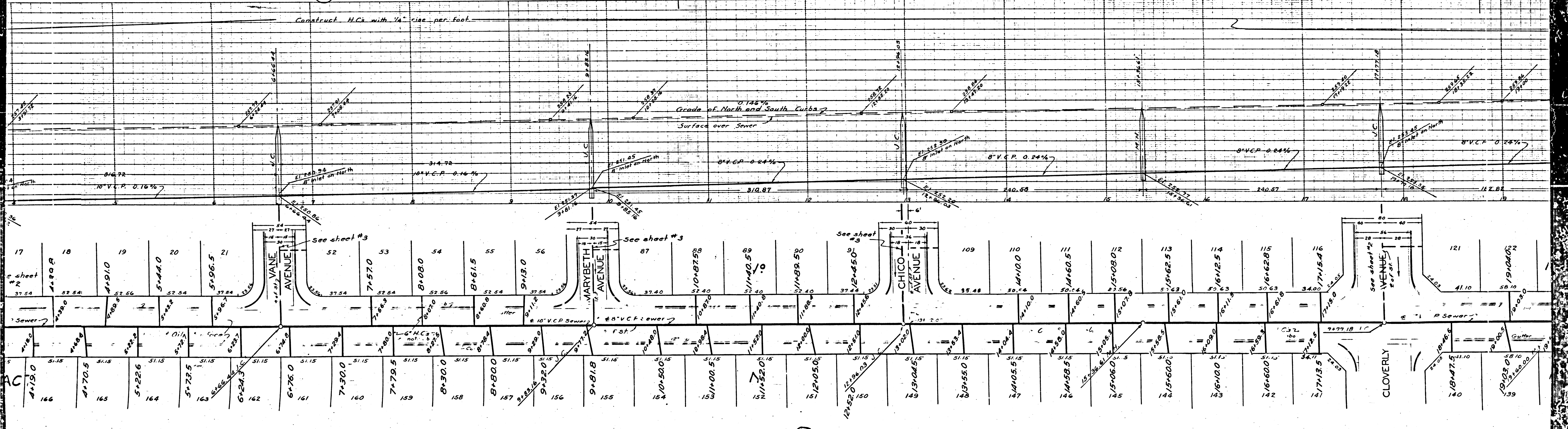
MEM. BOOK  
 KENNEL & SOREN CO.

NO. 1000  
 1/2" = 10' HORIZ.  
 1" = 10' VERT.  
 1908

8068

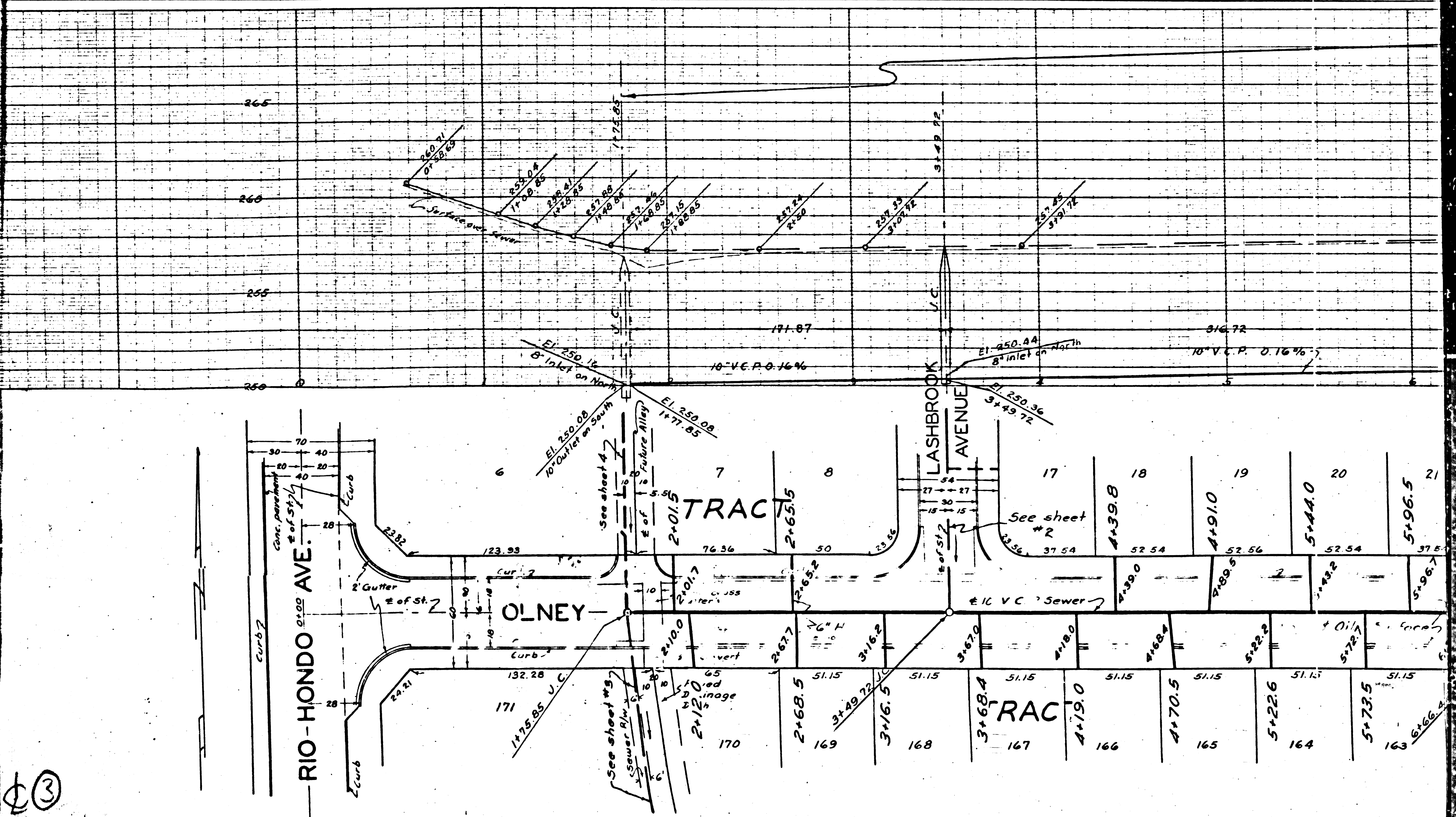
8067

Construct H.C.s with "A" rise per foot

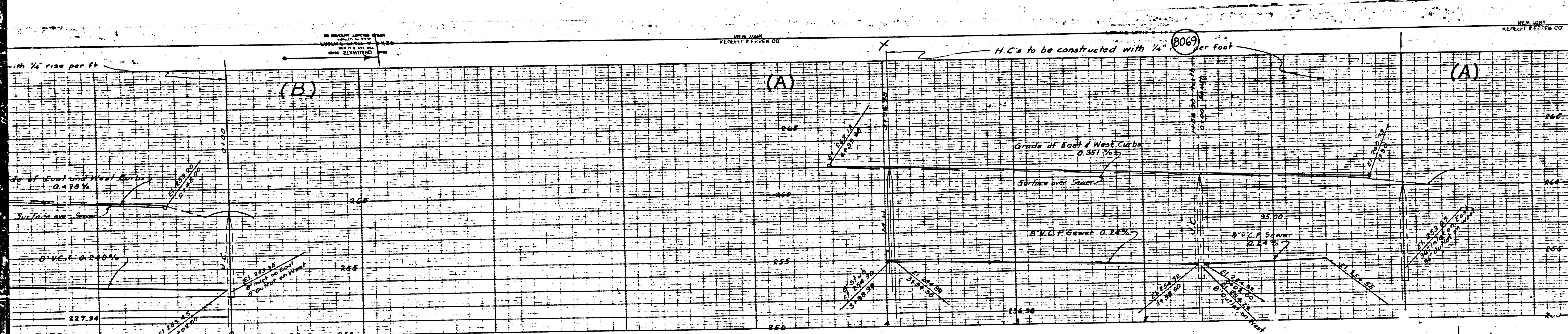


22

NEW YORK REFERENCE ELEVATION 100  
 NEW YORK REFERENCE ELEVATION 100



③



**PROFILE ALIGNMENT AND GRADE OF  
SANITARY SEWERS  
TO BE CONSTRUCTED IN**

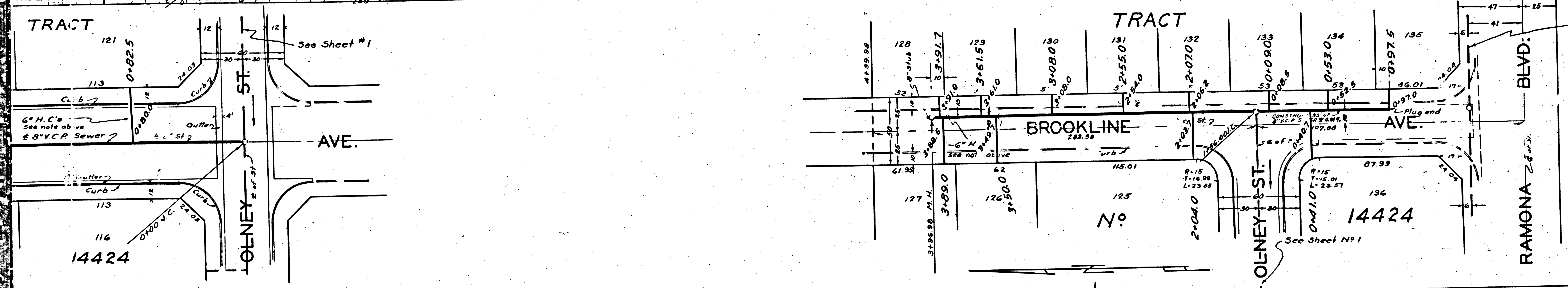
(A) BROOKLINE AVE.  
FROM 241' NORTH TO 97' SOUTH OF OLNEY ST.

(B) CLOVERLY AVE.  
FROM OLNEY ST. NORTHERLY 232'

(C) LASHBROOK AVE.  
FROM OLNEY ST. NORTHERLY 338'

PRIVATE CONTRACT NO. 545  
W.S. 44  
SHEET 2 OF 4 SHEETS

For Construction Notes See Sheet No. 1



PREPARED BY *Leon M. Moore*  
REG. C.E. No. 215

APPROVED BY *Edmond*  
COUNTY ENGINEER

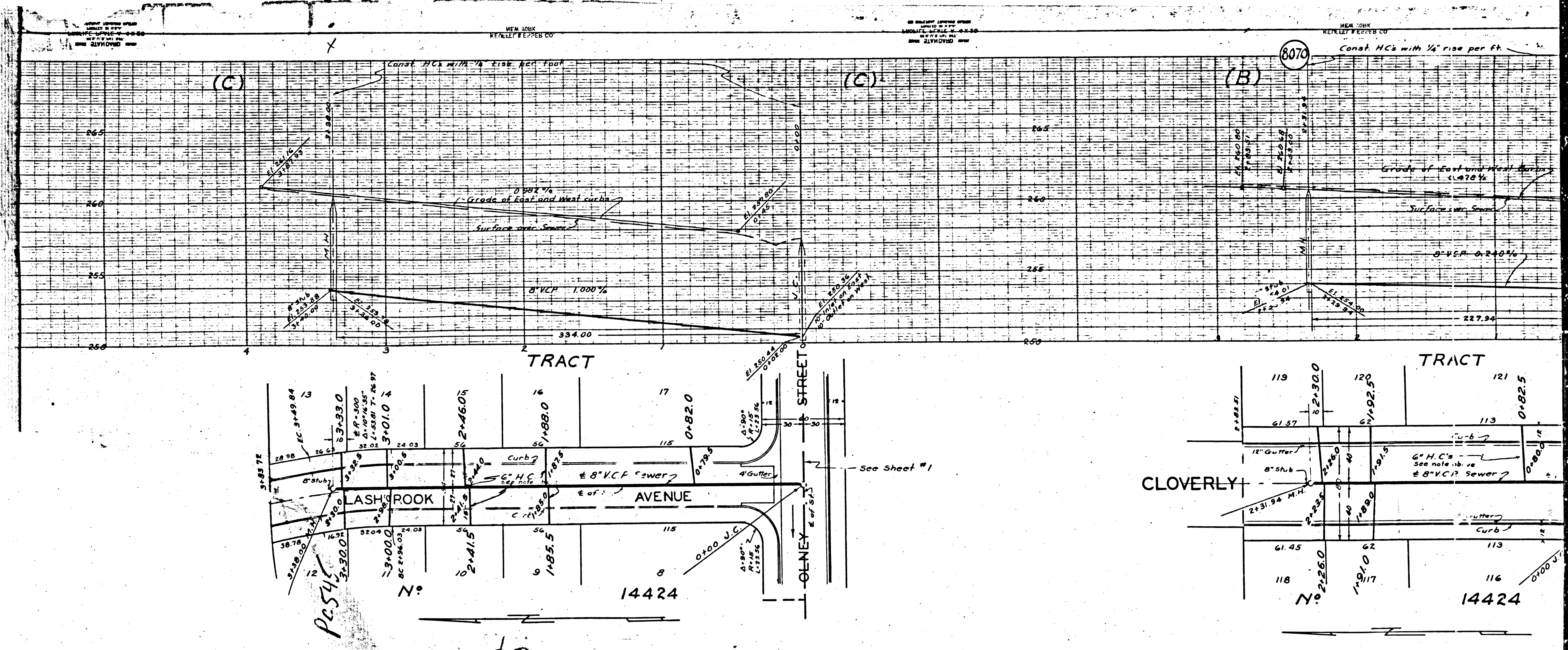
APPROVED BY *Edmond*  
CHIEF ENGINEER OF COUNTY  
SANITATION DISTRICT NO. 15

CHECKED BY *Edmond* Nov. 23, 1948  
OFFICE OF THE COUNTY ENGINEER  
REG. C.E. No. 215

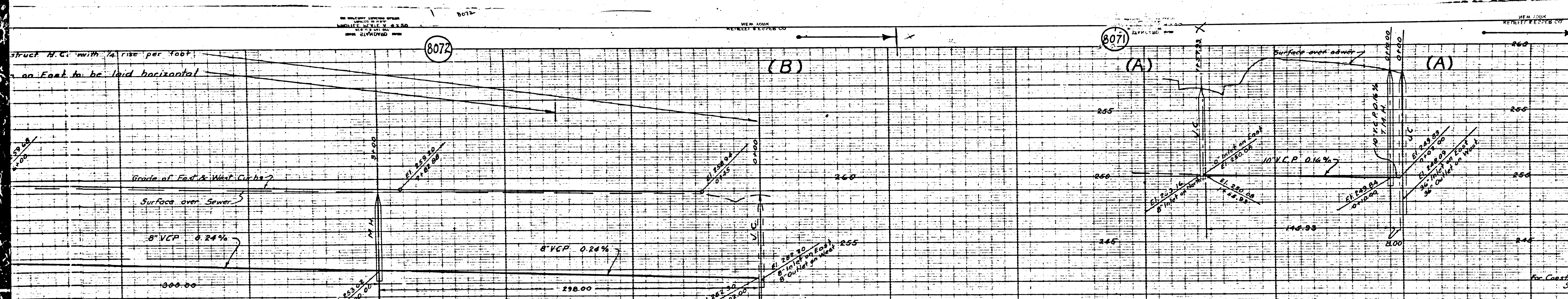
Exist. 36' Ramona Blvd.  
Outfall Sewer, Sanitation  
District No. 15

Final Ck. T.P. 6/2/48

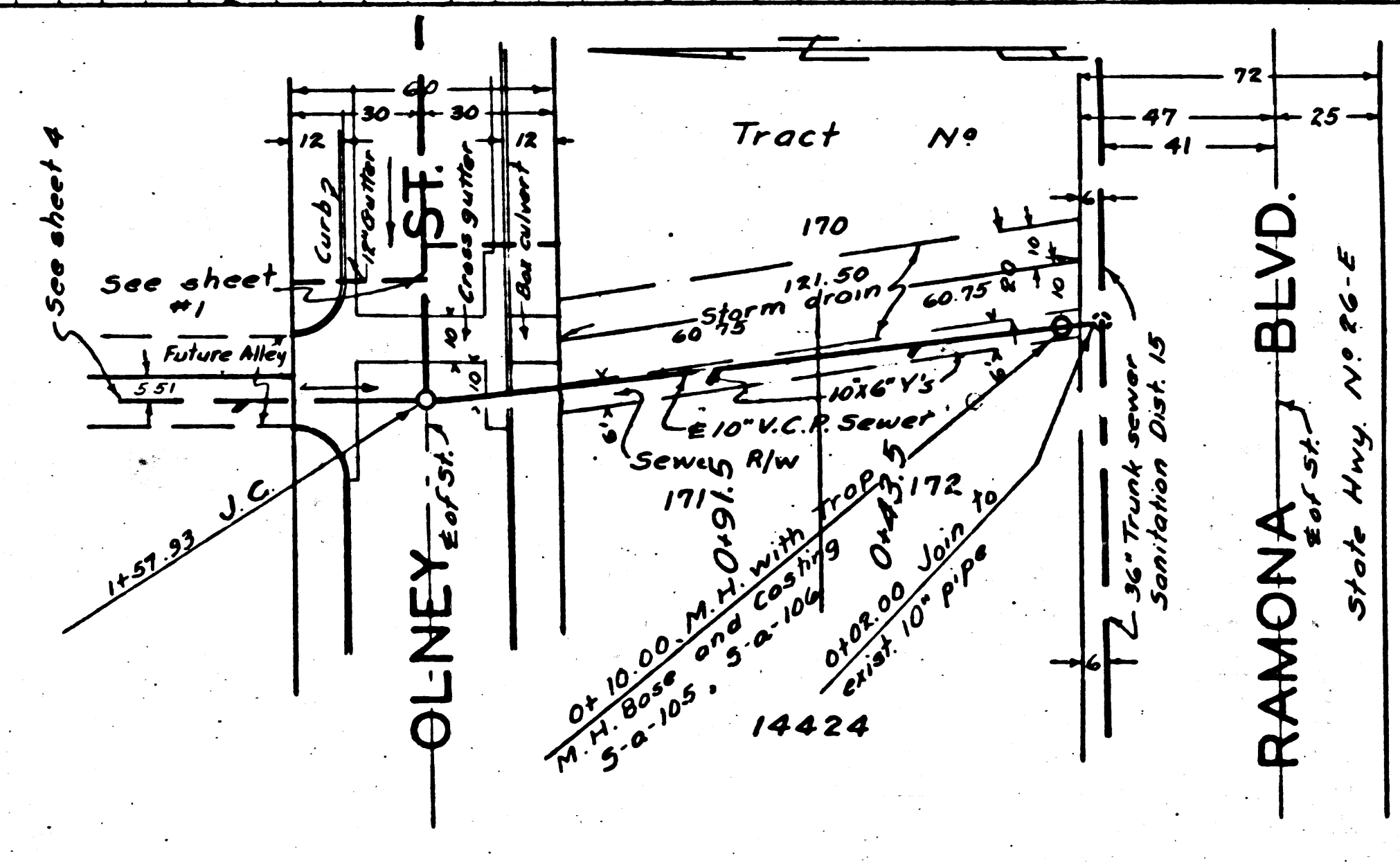
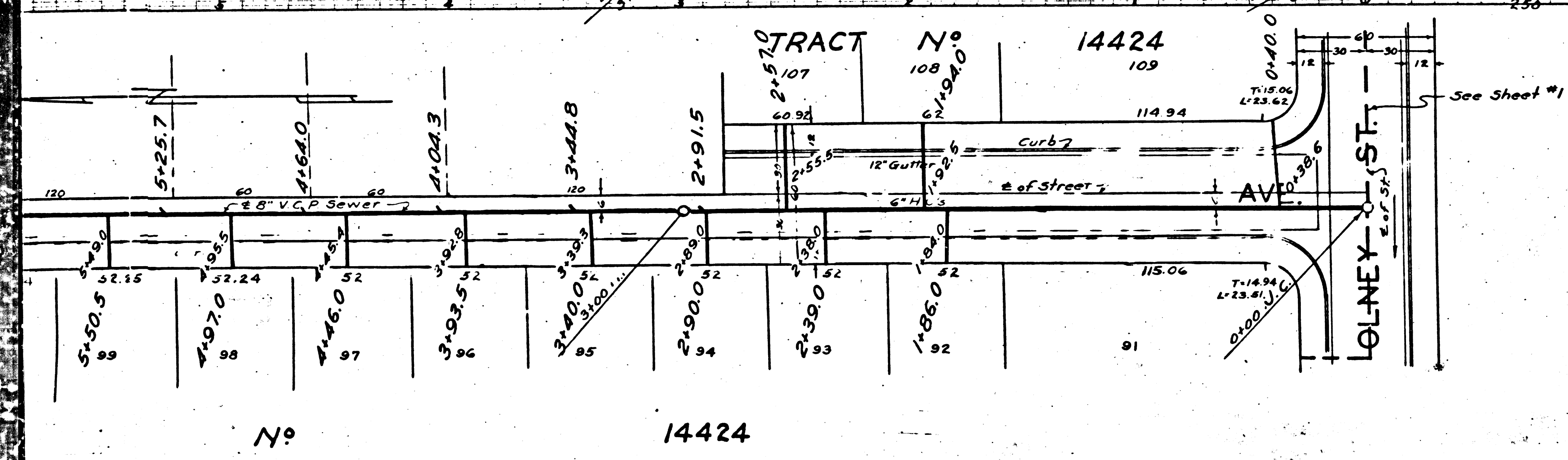
SHEET 2 OF 4 SHEETS



22



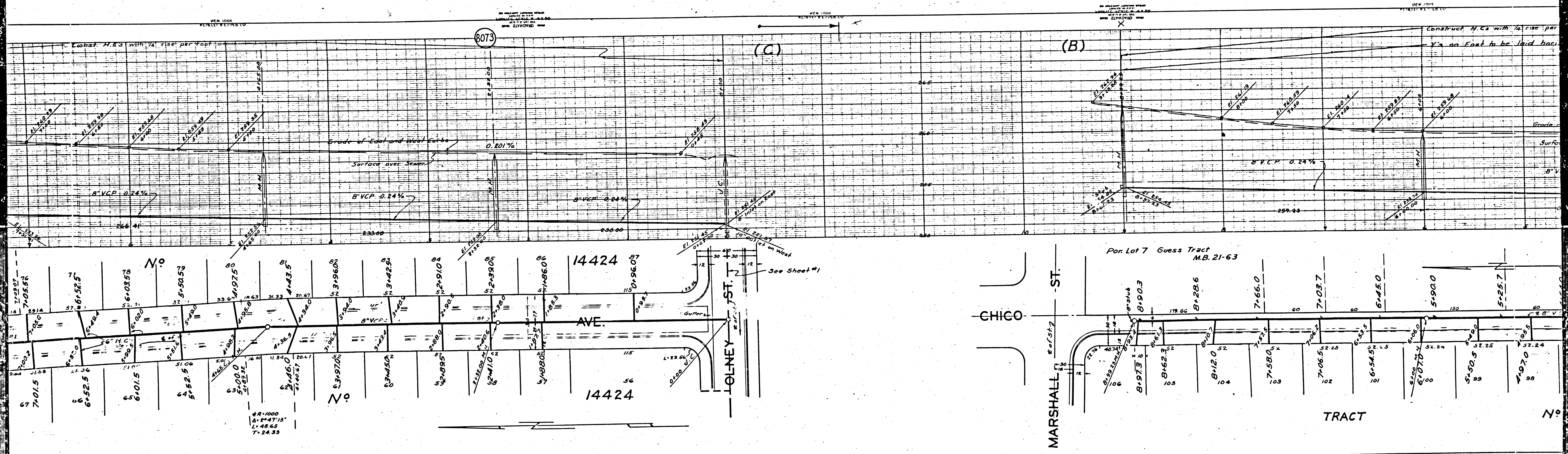
PROFILE ALIGNMENT AND GRADE OF  
**SANITARY SEWERS**  
 TO BE CONSTRUCTED IN  
 (A) SEWER R/W IN TRACT NO 14424  
 BETWEEN RAMONA BLVD & OLNEY  
 (B) CHICO AVE.  
 BETWEEN OLNEY ST. & MARSHALL S  
 (C) MARYBETH AVE.  
 BETWEEN OLNEY ST. & MARSHALL S  
 (D) VANE AVE.  
 BETWEEN OLNEY ST. & MARSHALL S  
 PRIVATE CONTRACT 545  
 W. S. 44



SHEET 3 OF 4 SHEETS  
 PREPARED BY Leon W. Moore  
 COUNTY ENGINEER  
 APPROVED BY [Signature]  
 COUNTY ENGINEER  
 APPROVED BY [Signature]  
 CHIEF ENGINEER OF COUNTY  
 SANITATION DISTRICT NO. 11  
 CHECKED BY [Signature]  
 OFFICE OF THE COUNTY ENGINEER

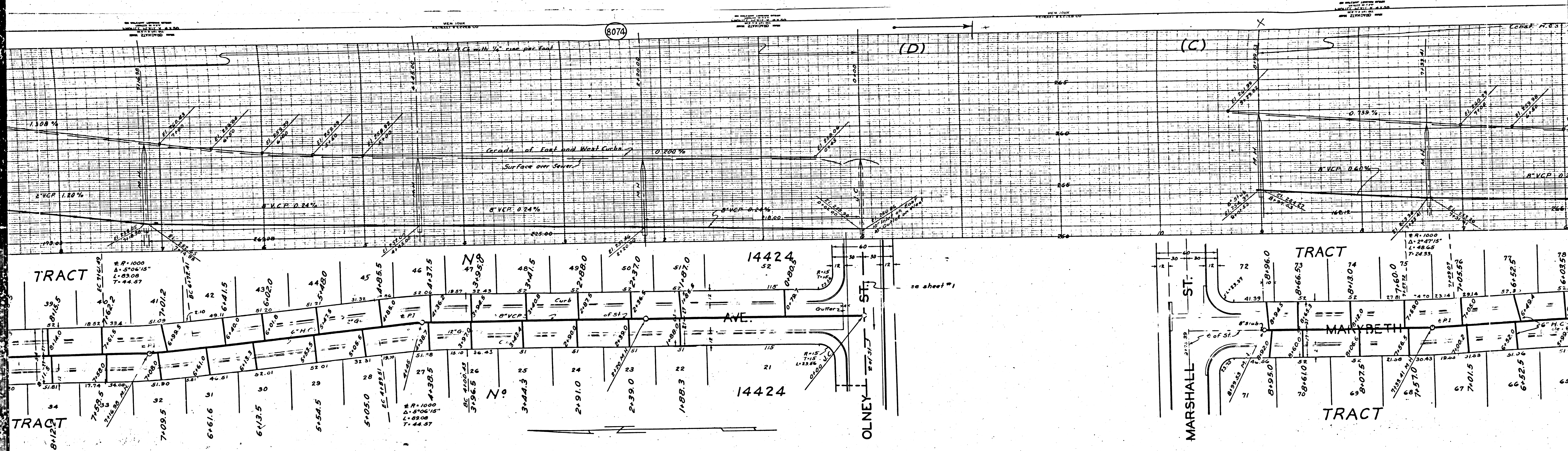
Final C & T.P. 6/15/48

②①



R=1000  
 A=247'15"  
 L=48.65  
 T=24.33

20



8074

(D)

(C)

TRACT

TRACT

14424

14424

OLNEY ST.

MARSHALL ST.

TRACT

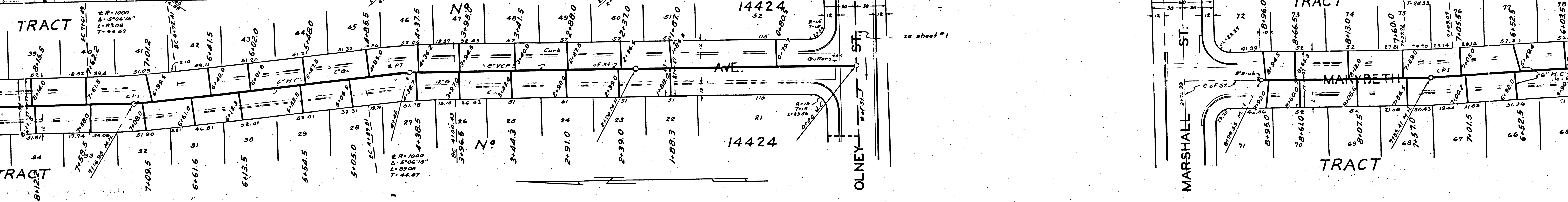
TRACT

MANYBETH

AVE.

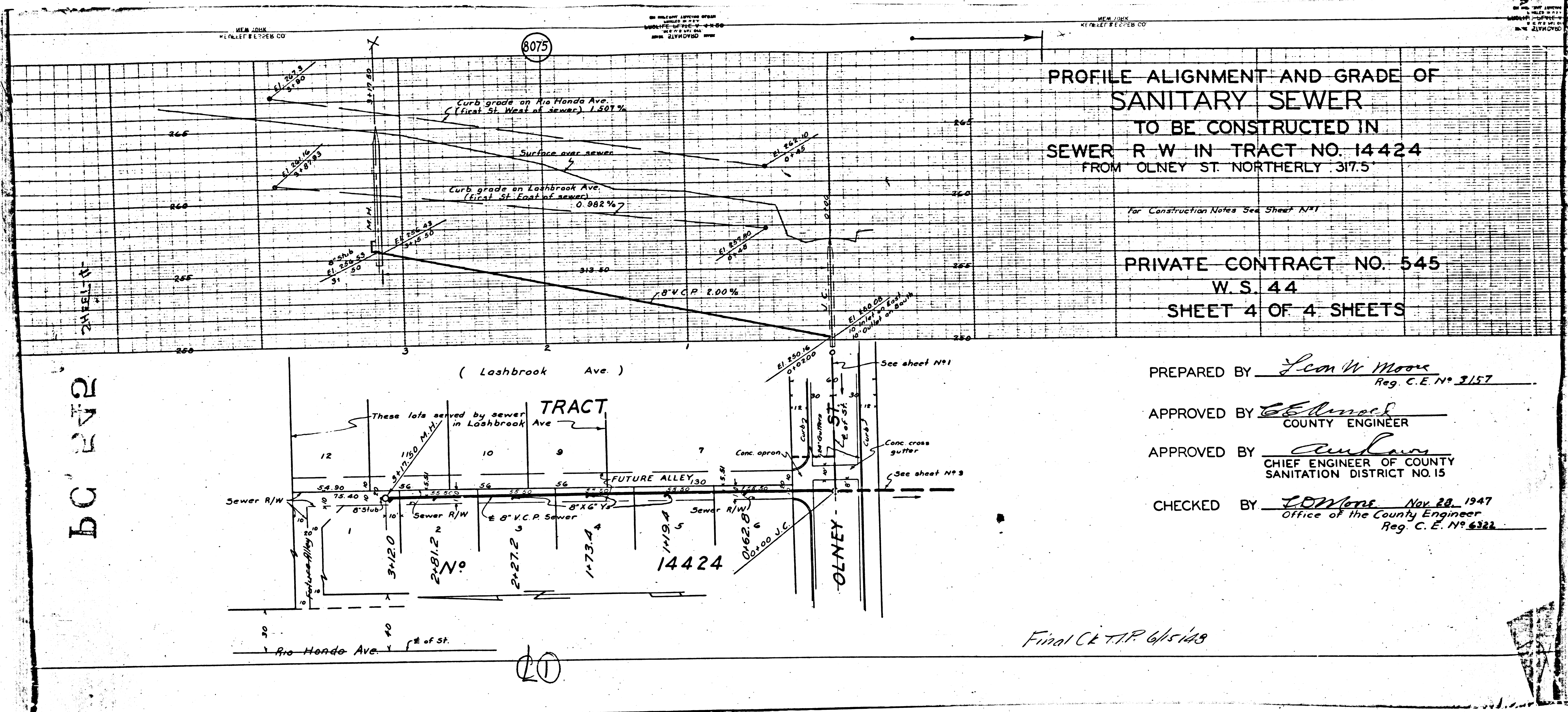
③

see sheet #1









PROFILE ALIGNMENT AND GRADE OF  
**SANITARY SEWER**  
 TO BE CONSTRUCTED IN  
 SEWER R.W. IN TRACT NO. 14424  
 FROM OLNEY ST. NORTHERLY 317.5'

For Construction Notes See Sheet No. 1

PRIVATE CONTRACT NO. 545  
 W.S. 44  
 SHEET 4 OF 4 SHEETS

PREPARED BY Leon W. Moore  
 Reg. C.E. No. 2157  
 APPROVED BY E. E. Linnick  
 COUNTY ENGINEER  
 APPROVED BY Am Law  
 CHIEF ENGINEER OF COUNTY  
 SANITATION DISTRICT NO. 15  
 CHECKED BY L. W. Moore Nov. 28, 1947  
 Office of the County Engineer  
 Reg. C.E. No. 6322

Final Ck. T.P. 6/5/48