

1477

D.M. 22-21 1/2 15268 Bldg. 1st
Washington Blvd. Broadway St.
Curb L.V.C.P. 18" x 18" x 18" 18"
Standard 18" x 18" x 18" 18"

- (1) Use Standard Manhole Frames and Covers 5-a-17
- (2) Use Standard Strength Pipe
- (3) Use Cement Mortar for all Vitrified Clay Pipe Joints
- (4) Reconstruct all Trench within Paved Area to meet Los Angeles County Road Dept. Requirements
- (5) All Structures shall be Brick Sewer Structures 5-a-104
- (6) Excavate and Space of pipes at intersection with pipe as per 5-a-6

PROFILE ALIGNMENT AND GRADE OF
SANITARY SEWERS
TO BE CONSTRUCTED IN
BROADWAY
BETWEEN A POINT 1450 FT. ± NORTH OF WASHINGTON
BLVD. AND A POINT 1020 FT. ± NORTH OF WASHINGTON
BLVD.

PRIVATE CONTRACT NO. 553
W.S. 37
ONE SHEET

SCALE: VERT. 1" = 4'
HOR. 1" = 40'
APRIL 1947
PREPARED IN THE OFFICES OF JOHN M. KEMMLER,
REG. C.E. NO. 573

Note: No representative of the County Engineer will survey or lay out any portion of the work.
The owner or his authorized representative shall furnish the County Engineer with grades, elevations, and bearings of all existing and proposed structures and shall provide stakes for them at their proper locations with stationing plainly marked. Any change of location shall be requested in writing by the owner or his representative.
No existing shall be made in these plans without approval of the County Engineer.

FOR LEGEND
SEE PLAN NO. S-a-64

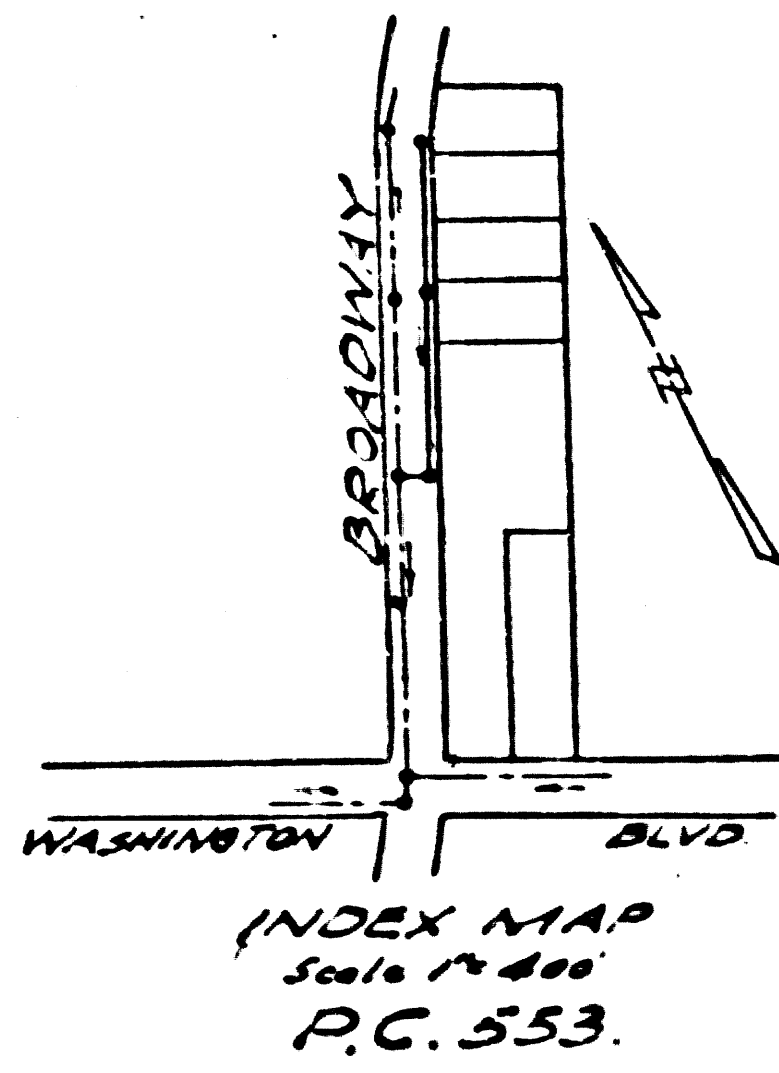
NOTES:
GRADES TO WHICH THIS IMPROVEMENT IS TO BE CONSTRUCTED ARE SHOWN ON PLANS AND PROFILES.
GRADE POINTS FOR TOP OF CURB, CENTER LINE OF STREET OR CENTER LINE OF ALLEY ARE SHOWN BY CIRCLES OR PROFILES. AT ALL POINTS BETWEEN DESIGNATED POINTS THE GRADE SHALL BE ESTABLISHED SO AS TO CONFORM TO A STRAIGHT LINE DRAWN BETWEEN SAID DESIGNATED POINTS.
ELEVATIONS ARE IN FEET ABOVE U.S.C.S. DATUM OR MEAN SEA LEVEL.
THIS DRAWING AND THE DATA HEREON ARE HEREBY MADE A PART OF THE SPECIFICATIONS.
WORK SHALL BE CONSTRUCTED ACCORDING TO SPECIFICATIONS ON FILE IN THE OFFICE OF THE COUNTY ENGINEER, AND SHALL BE PROVIDED ONLY IN THE PRESENCE OF THE COUNTY ENGINEER.
BEFORE WORK CAN BE STARTED, THE CONTRACTOR MUST OBTAIN A PERMIT TO EXCAVATE IN COUNTY STREETS FROM THE L.A. COUNTY ROAD DEPT., 1104 HALL OF RECORDS, AND MAKE A DEPOSIT WITH THE COUNTY ENGINEER, 700 FASHION LEAGUE BLDG., SUFFICIENT TO COVER THE COST OF CONSTRUCTION INSPECTION AND RECORD PLANS.

RECEIVED
MAY 7 1947
L.A. COUNTY ENGINEER

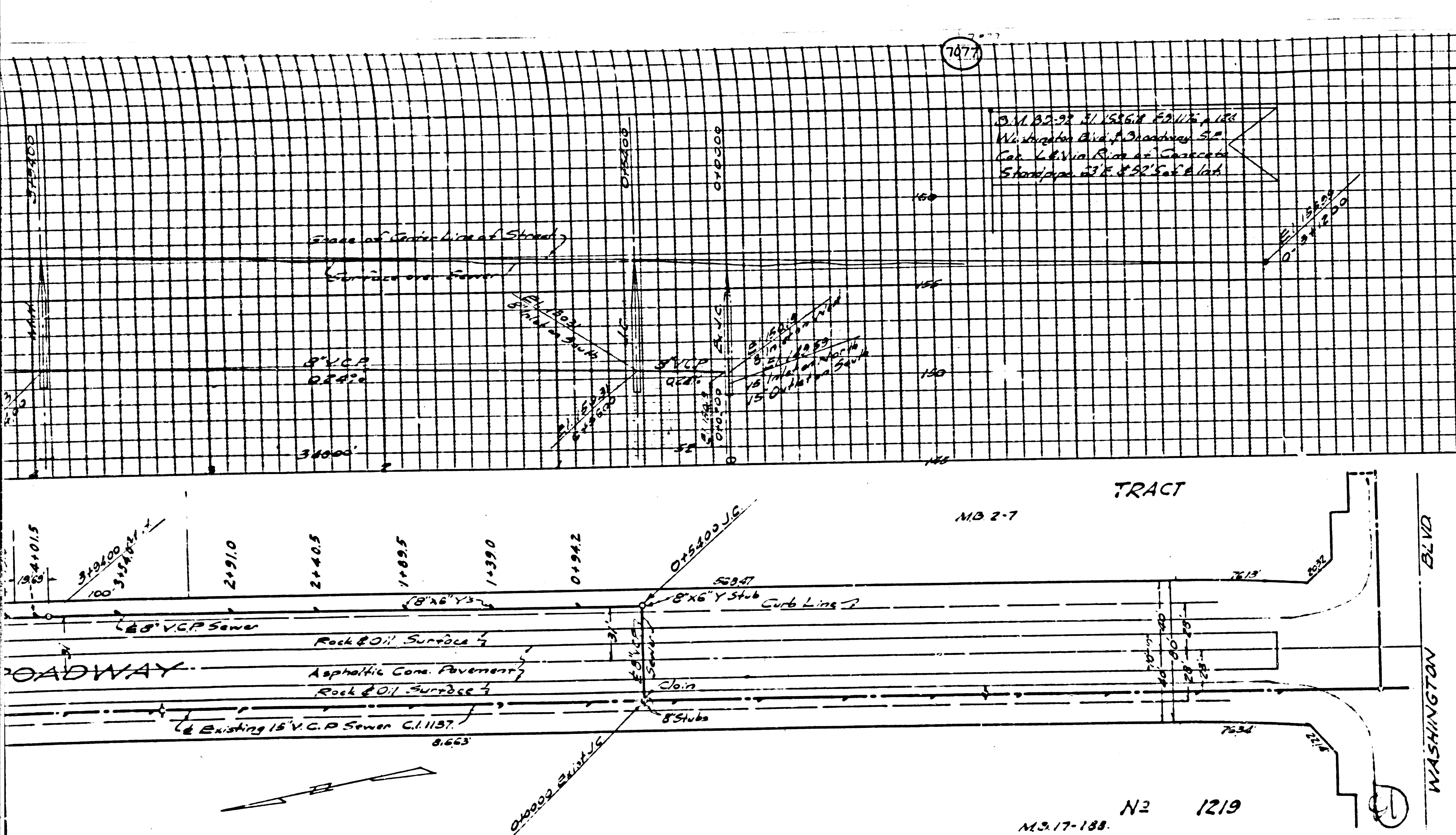
COUNTY OF LOS ANGELES, CALIFORNIA.

APPROVED *[Signature]*
CHIEF DEPUTY COUNTY ENGINEER
APPROVED *[Signature]*
CHIEF ENGINEER OF COUNTY
SANITARY DISTRICT NO. 3

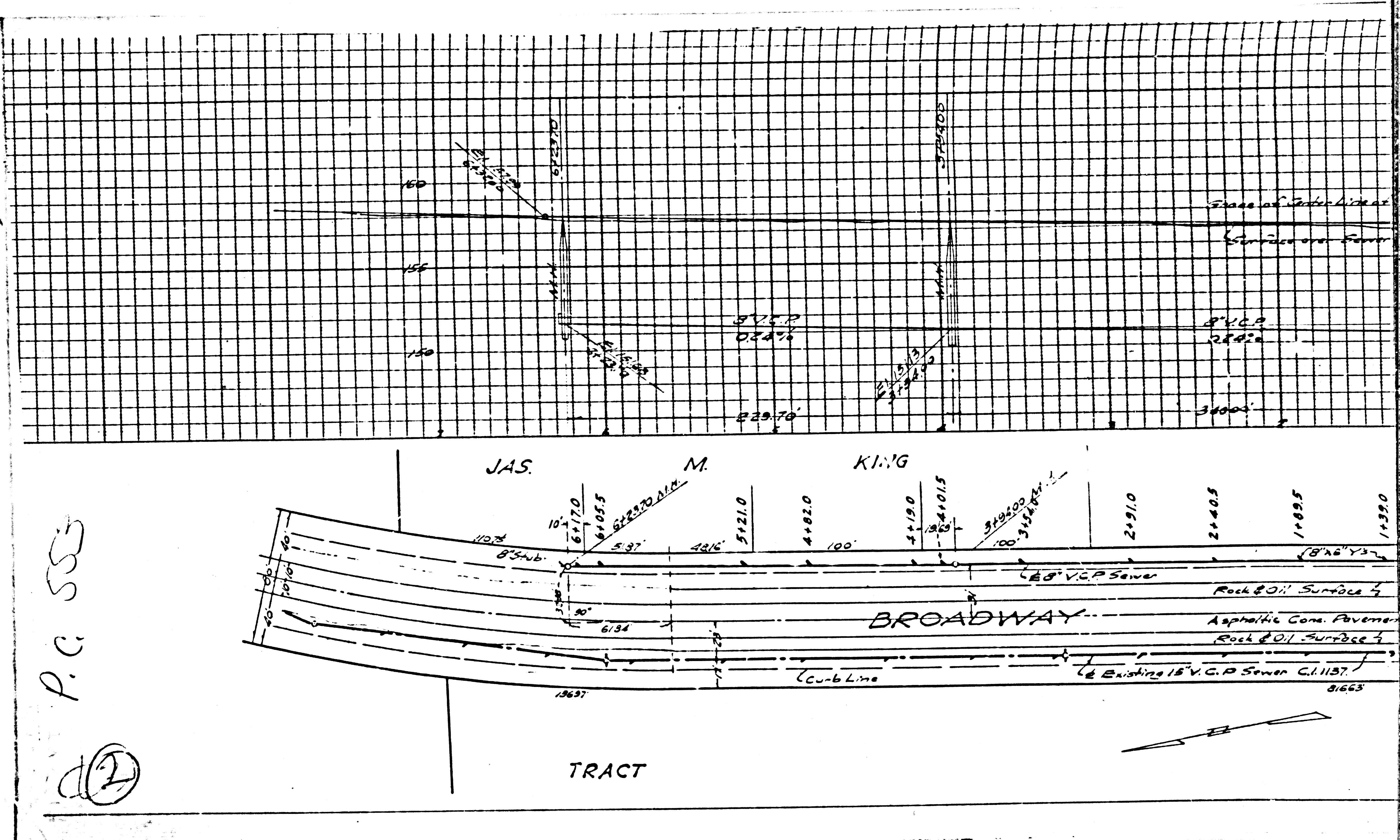
CHECKED BY *[Signature]* May 2 1947
OFFICE OF COUNTY ENGINEER
REG. C.E. No. 6622



Final C.E. T.I.P. 7/10/47



N2 1219
M.S. 17-188



P.C. 555

(2)

TRACT

