

- DOUBLE SCALE**
1. Use Standard Manhole Frames and Covers, S-o-117.
 2. Use Standard Strength Pipe except as noted.
 3. Use Cement Mortar for all Vitrified Clay Pipe Joints.
 4. Resurface all Trench within Paved Area to meet L.A. County Road Dept. requirements.
 5. Encase four feet of Sewer at points of interference with Poles as per S-o-16.
 6. House Connections to be constructed with invert of Property Line 5' below Curb Grade, except as noted.
 7. All Structures shall be Brick Sewer Structures, S-o-109.

**PROFILE, ALIGNMENT AND GRADE OF
SANITARY SEWERS
TO BE CONSTRUCTED IN**

**FIRST ALLEY WEST OF WESTERN AVE.
BETWEEN FIRST ALLEY SOUTH OF 111TH ST. & 108TH ST.
111TH STREET
BETWEEN FIRST ALLEY EAST OF MANHATTAN
PLACE & MANHATTAN PLACE
IMPERIAL HIGHWAY
BETWEEN ST. ANDREWS PL. & WESTERLY LINE OF TRACT No. 13796
FIRST ALLEY SOUTH OF 112TH ST.
BETWEEN FIRST ALLEY EAST OF ST. ANDREWS PL. & ST. ANDREWS PL.**

NOTE:
No representative of the County Engineer will survey or lay out any portion of the work. The owner or his authorized representative shall furnish the County Engineer with Grade Sheets and Stations for all House Connections and Y Branches and shall provide stakes for them at their proper locations with stationing plainly marked. Any change of location shall be requested in writing by the owner or his representative. No revisions shall be made in these Plans without approval of the County Engineer.

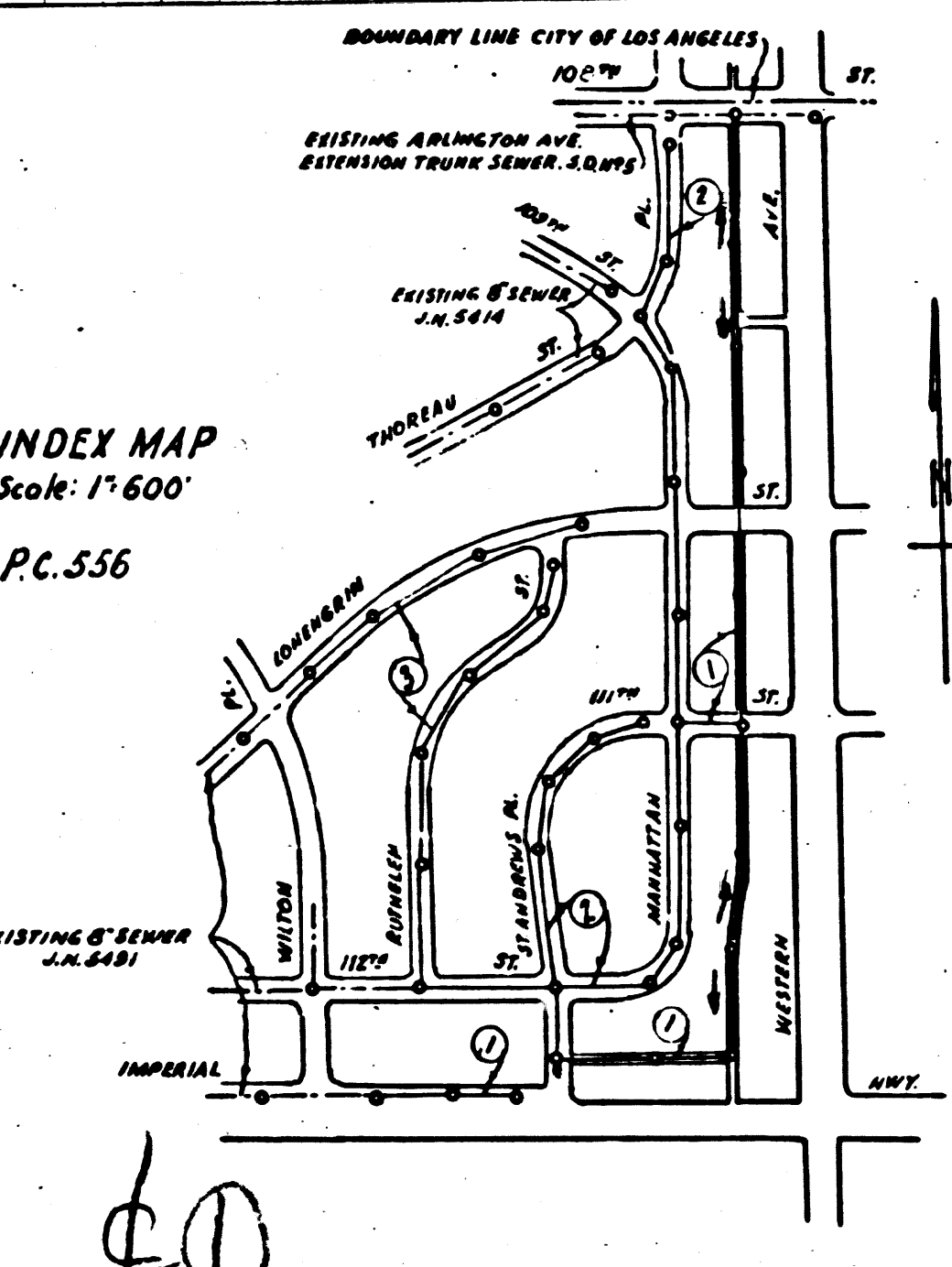
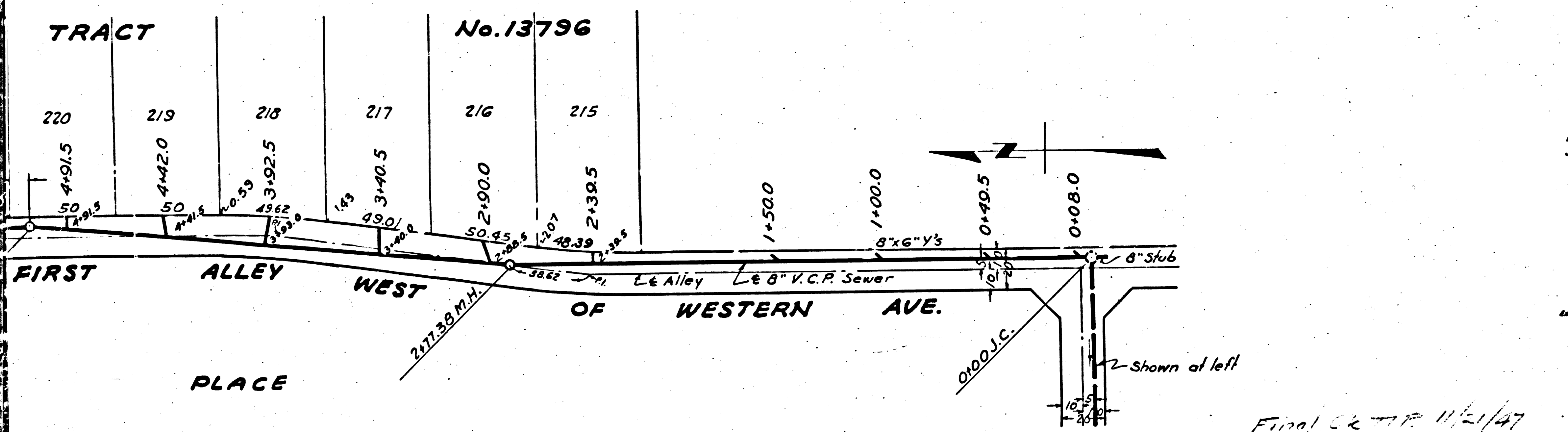
**PRIVATE CONTRACT No. 556
W.S. 26
SHEET 1 OF 3 SHEETS**

Scale: Vert. 1" = 5'
Horiz. 1" = 40'

MAY 1947

**PREPARED IN THE OFFICES OF
SEABOARD ENGINEERING CO.**

By *Mark A. Robm*
Reg. C.E. No. 2059



FOR LEGEND
See Plan No. S-o-G4

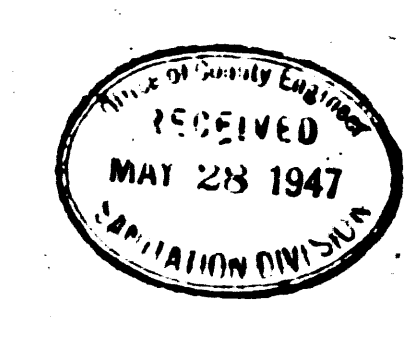
NOTE:
Grades to which this improvement is to be constructed are shown on Plans and Profiles. Grade points for top of curb, center line of streets or center line of alley are shown by circles on Profiles. All points between designated points the grade shall be established so as to conform to a straight line drawn between said designated points. Elevations are to feet above U.S.G.S. Datum or Mean Sea Level. This drawing and the data hereon are hereby made a part of the Specifications. Work shall be constructed according to specifications on file in the office of the County Engineer and shall be prosecuted only in the presence of the County Engineer. Before work can be started, the Contractor must obtain a permit to excavate in County streets from the L.A. County Road Dept., 1104 Hall of Records, and make a deposit with the County Engineer, 700 Fashion League Building sufficient to cover the cost of construction inspection and Record Plans.

COUNTY OF LOS ANGELES, CALIFORNIA

APPROVED *Edmund*
Deputy County Engineer

APPROVED *Richard*
Civil Engineer of County
Sanitation District No. 5

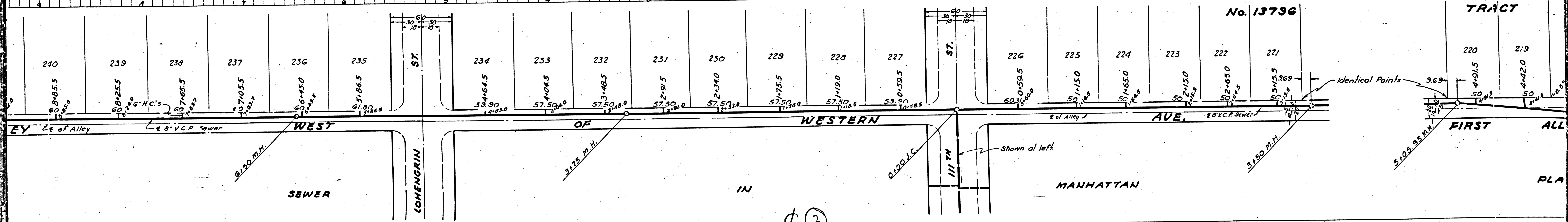
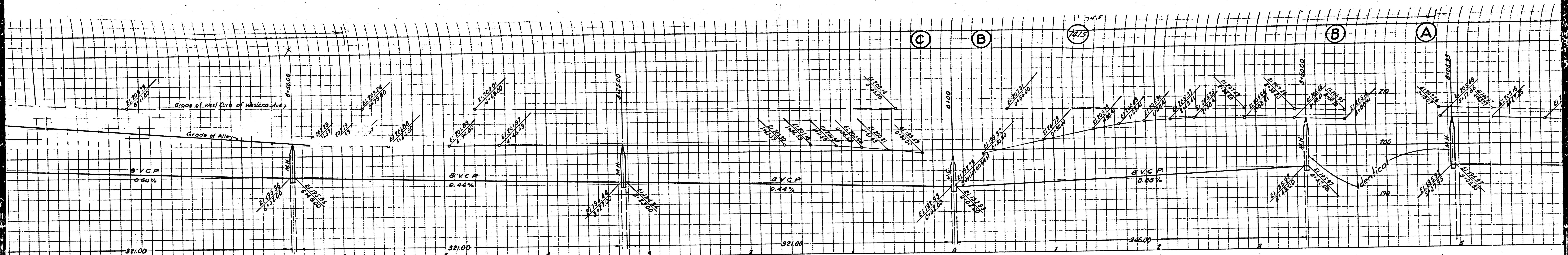
CHECKED *William A. Kelle* 1947
Office of County Eng. Reg. C.E. No. 5043



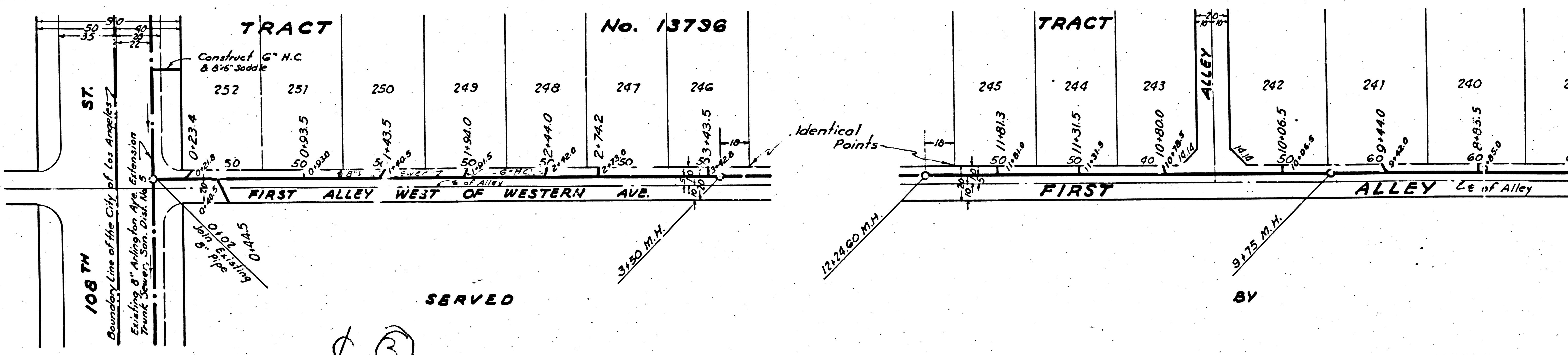
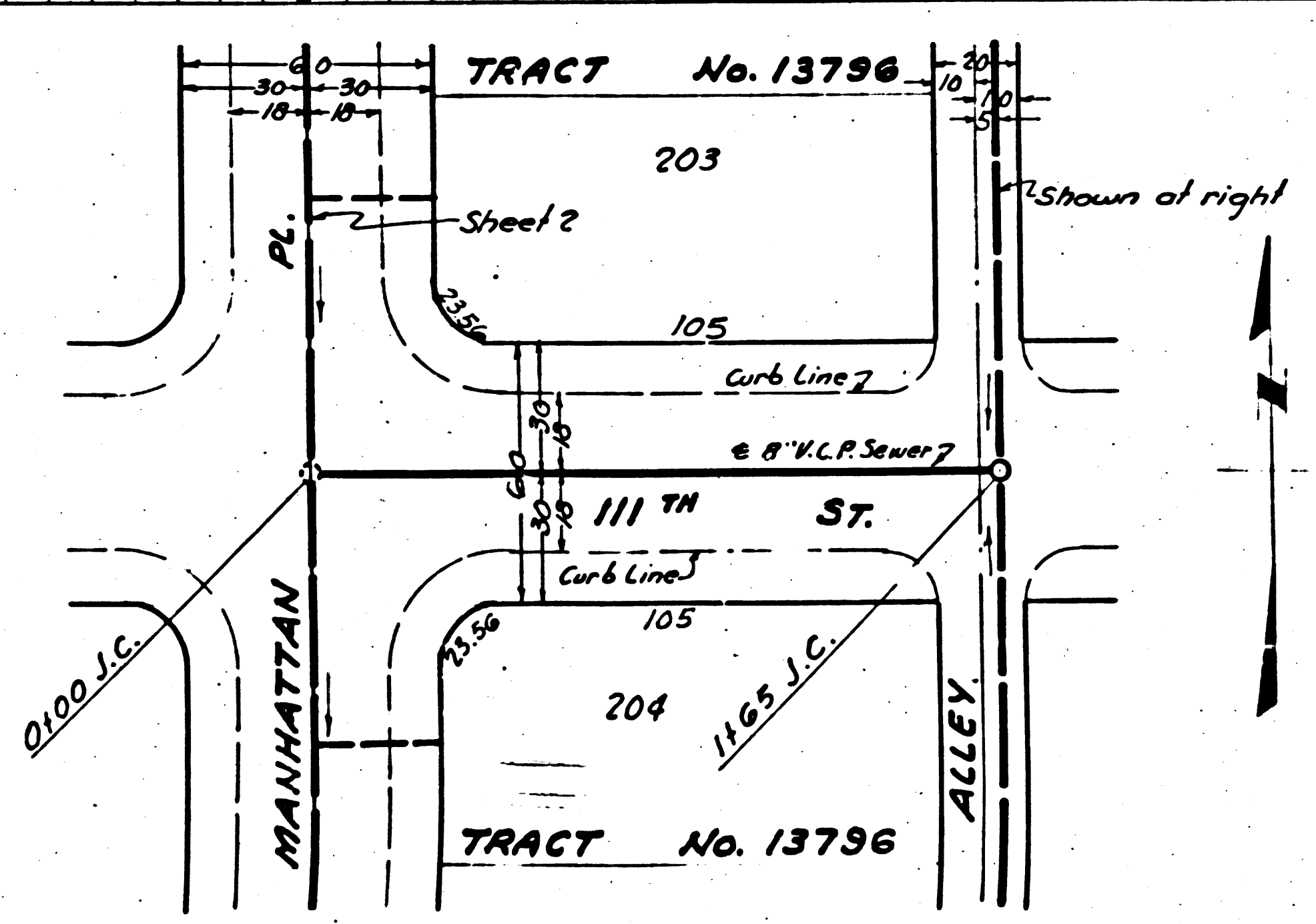
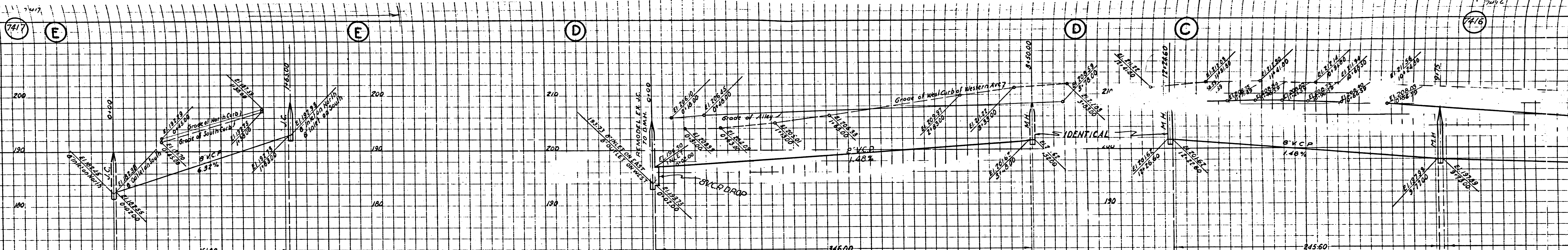
PC 220

Final & TR 11/21/47

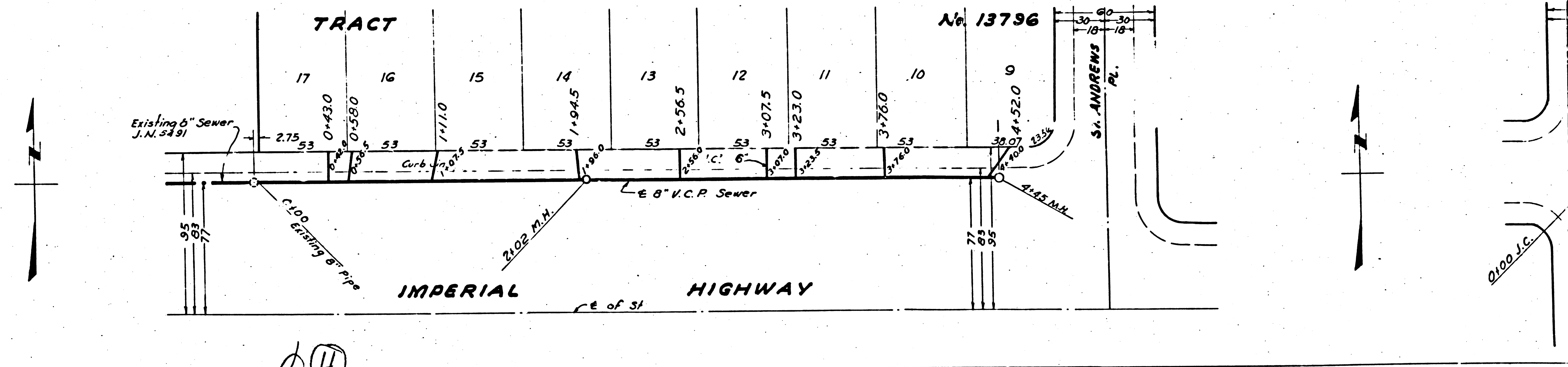
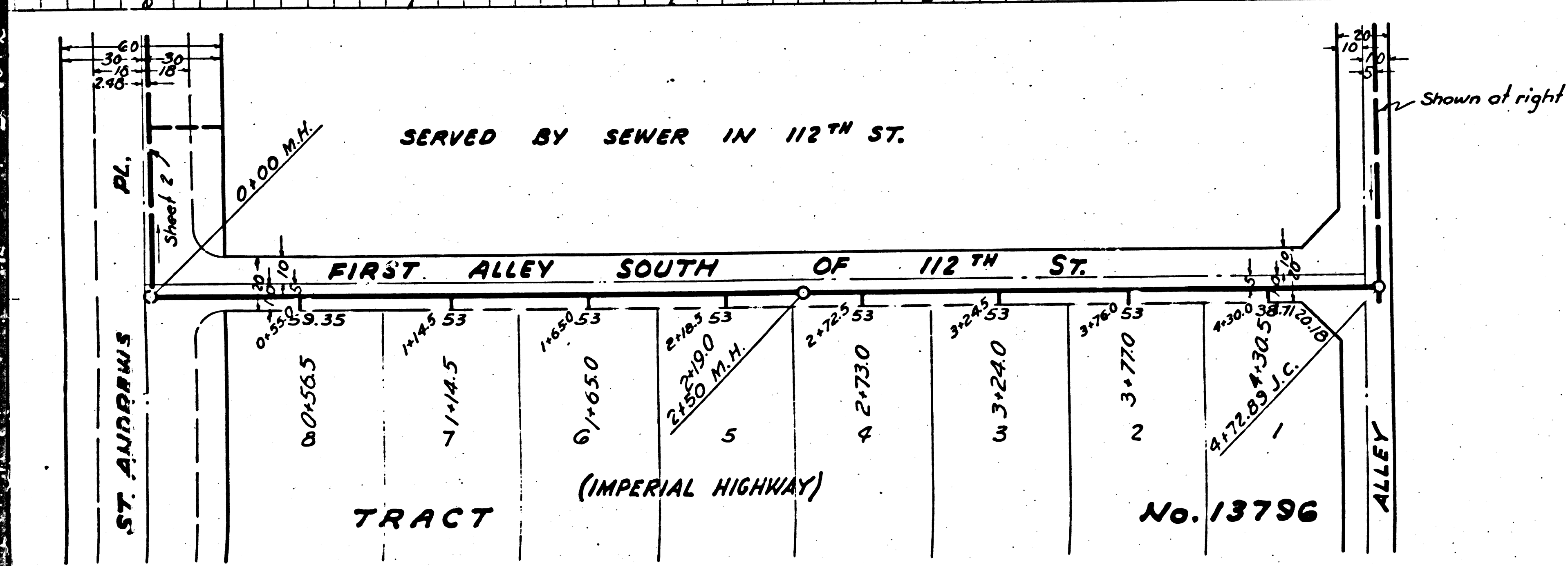
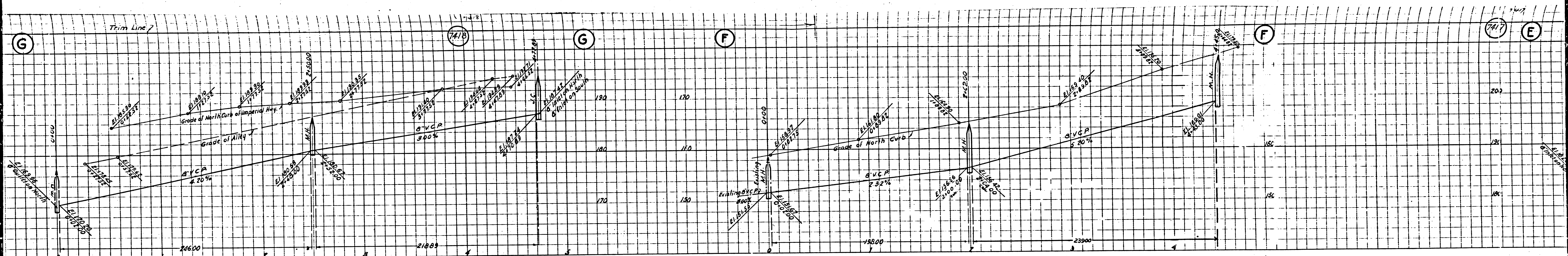
Trim Line



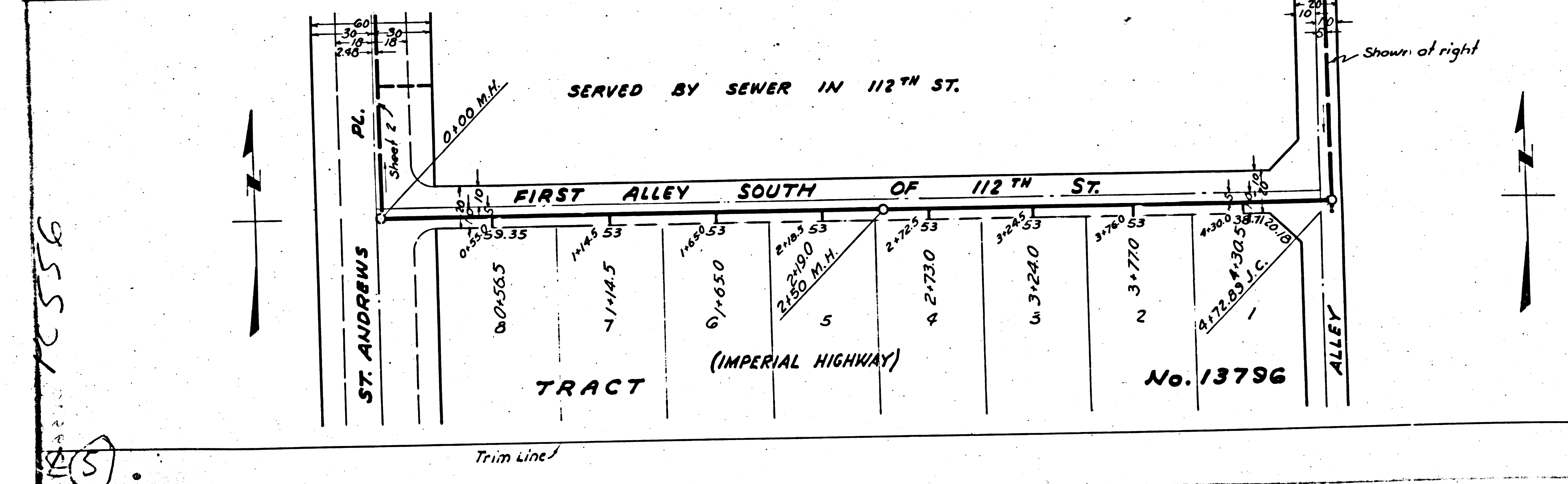
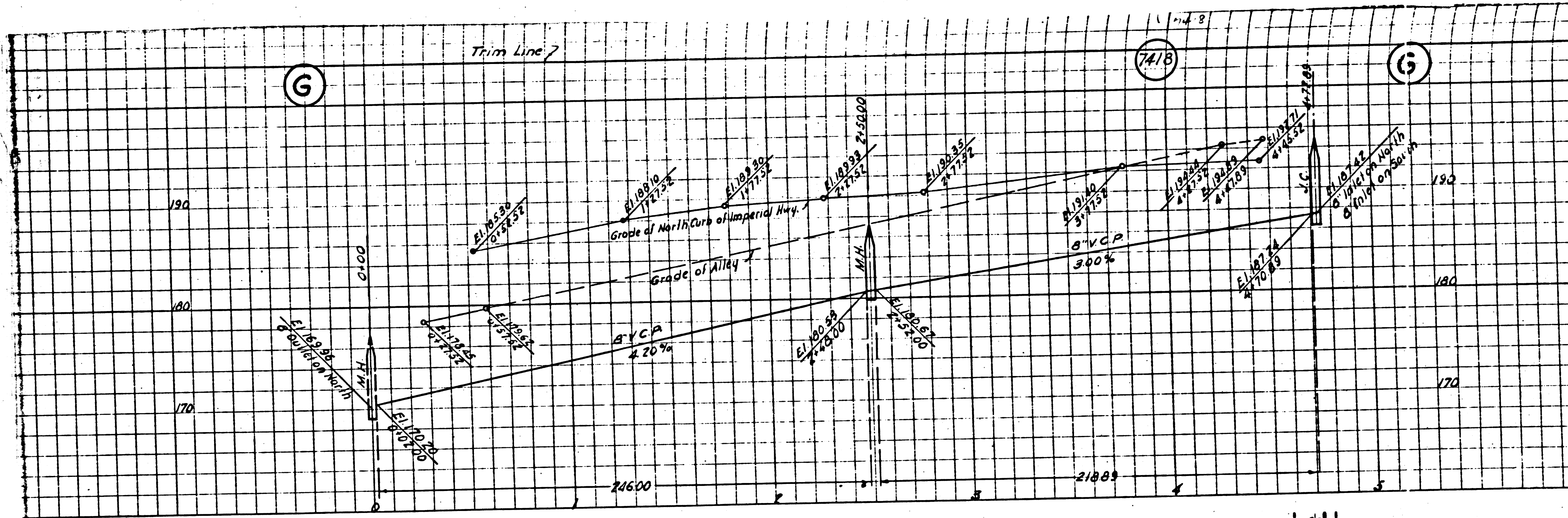
②



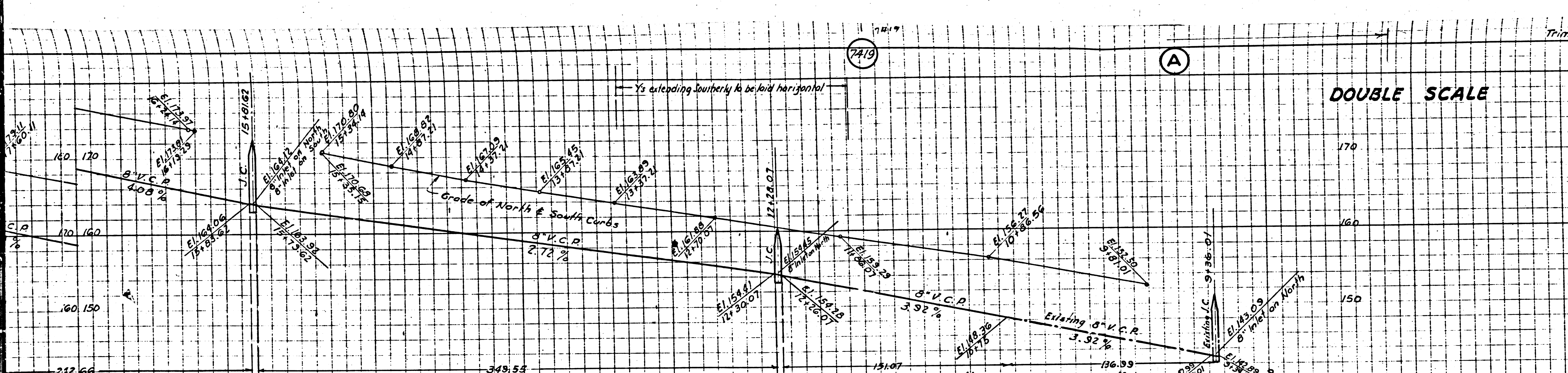
③



④



10556



DOUBLE SCALE

PROFILE, ALIGNMENT AND GRADE OF
SANITARY SEWERS
TO BE CONSTRUCTED IN

112TH ST. & MANHATTAN PL.
BETWEEN WILTON PL. & 100TH ST.
ST. ANDREWS PL. & 111TH ST.
BETWEEN FIRST ALLEY SOUTH OF 112TH ST. & MANHATTAN PL.

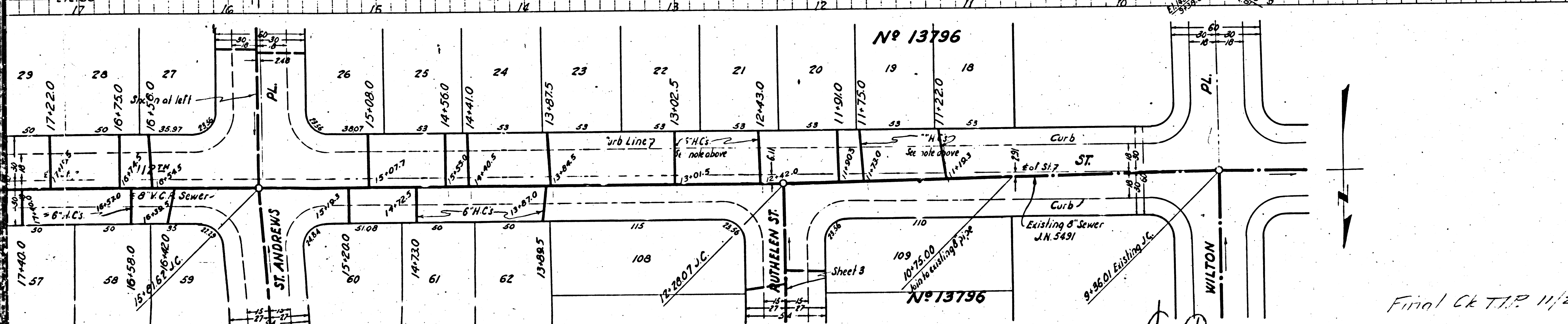
PRIVATE CONTRACT No. 556
W. S. 26
SHEET 2 OF 3 SHEETS
MAY 1947

Scale: Vert. 1" = 10'
Horiz. 1" = 40'

PREPARED IN THE OFFICES OF
SEABOARD ENGINEERING CO.

By *Mark A. Johnson*
Reg. C.E. No. 2053

FOR LEGEND
See Plan No. S-a-64



FOR CONSTRUCTION NOTES, SEE SHEET 1.

COUNTY OF LOS ANGELES, CALIFORNIA

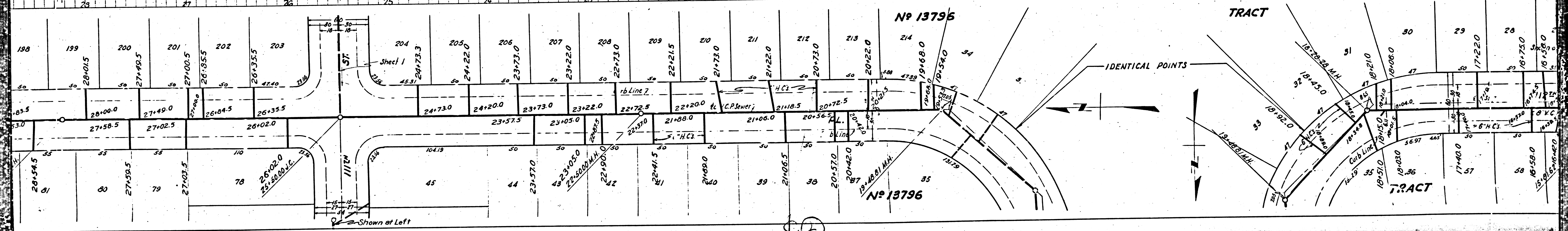
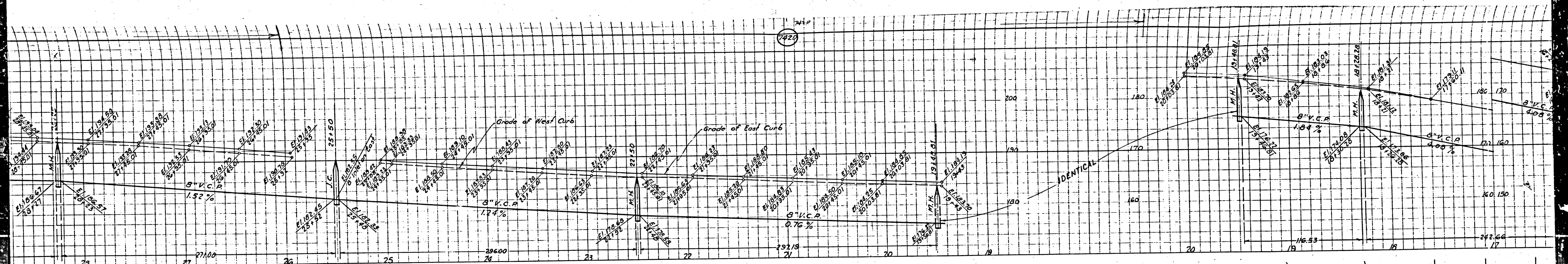
APPROVED *Edmond*
Deputy County Engineer

APPROVED *Allen*
Chief Engineer of County
Sanitation District No. 5

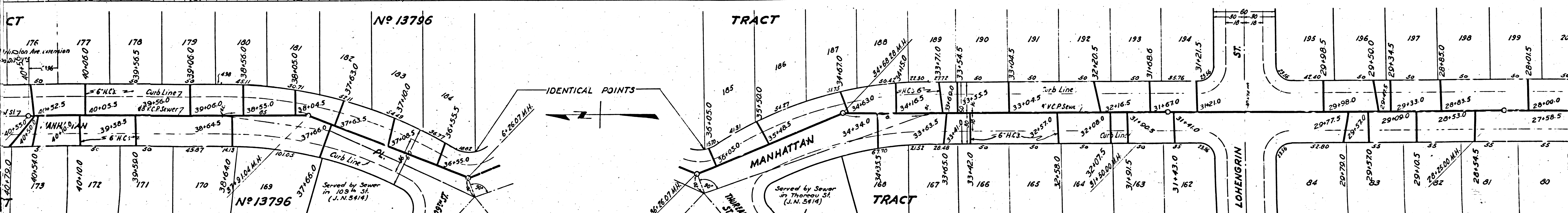
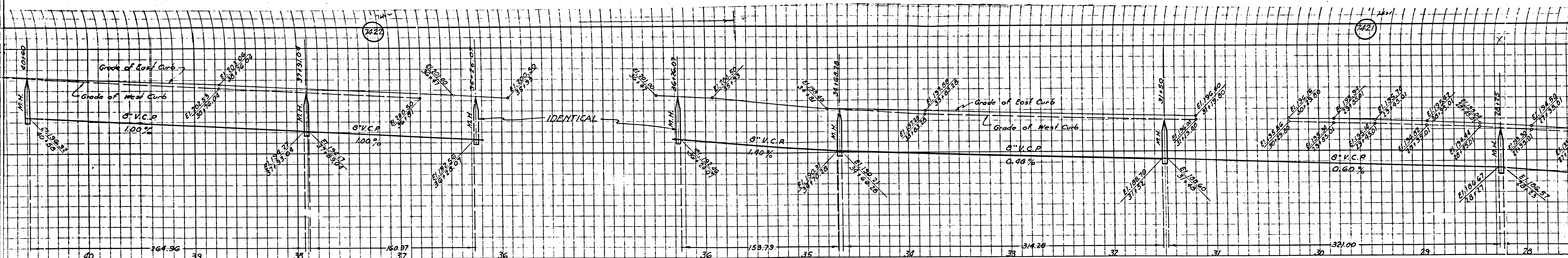
CHECKED *William H. Hill* 1947
Office of County Engineer, Reg. C.E. No. 5843

RECEIVED
MAY 28 1947
SANITATION DIVISION

Final Ck T.P. 11/21/47

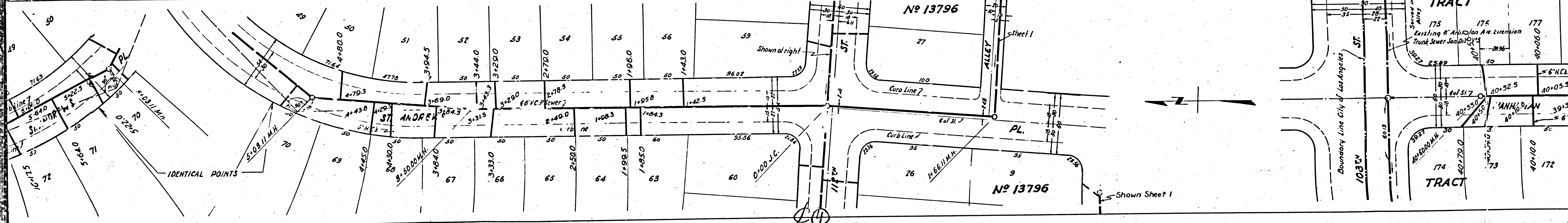
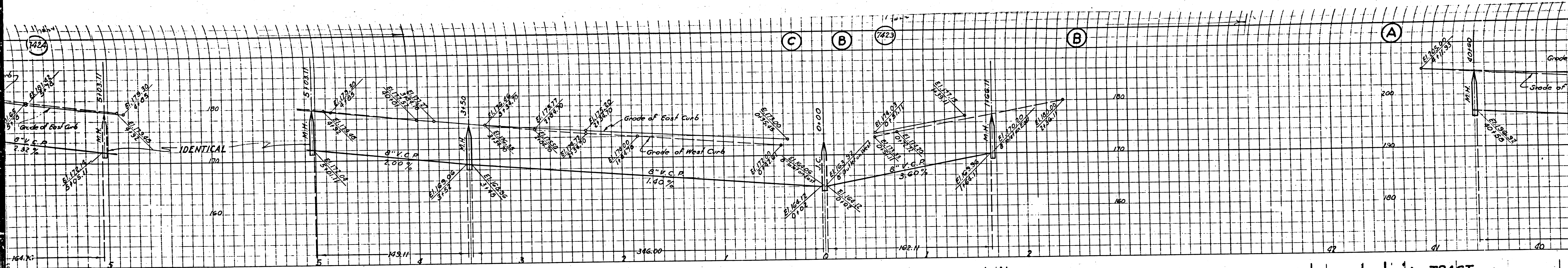


2



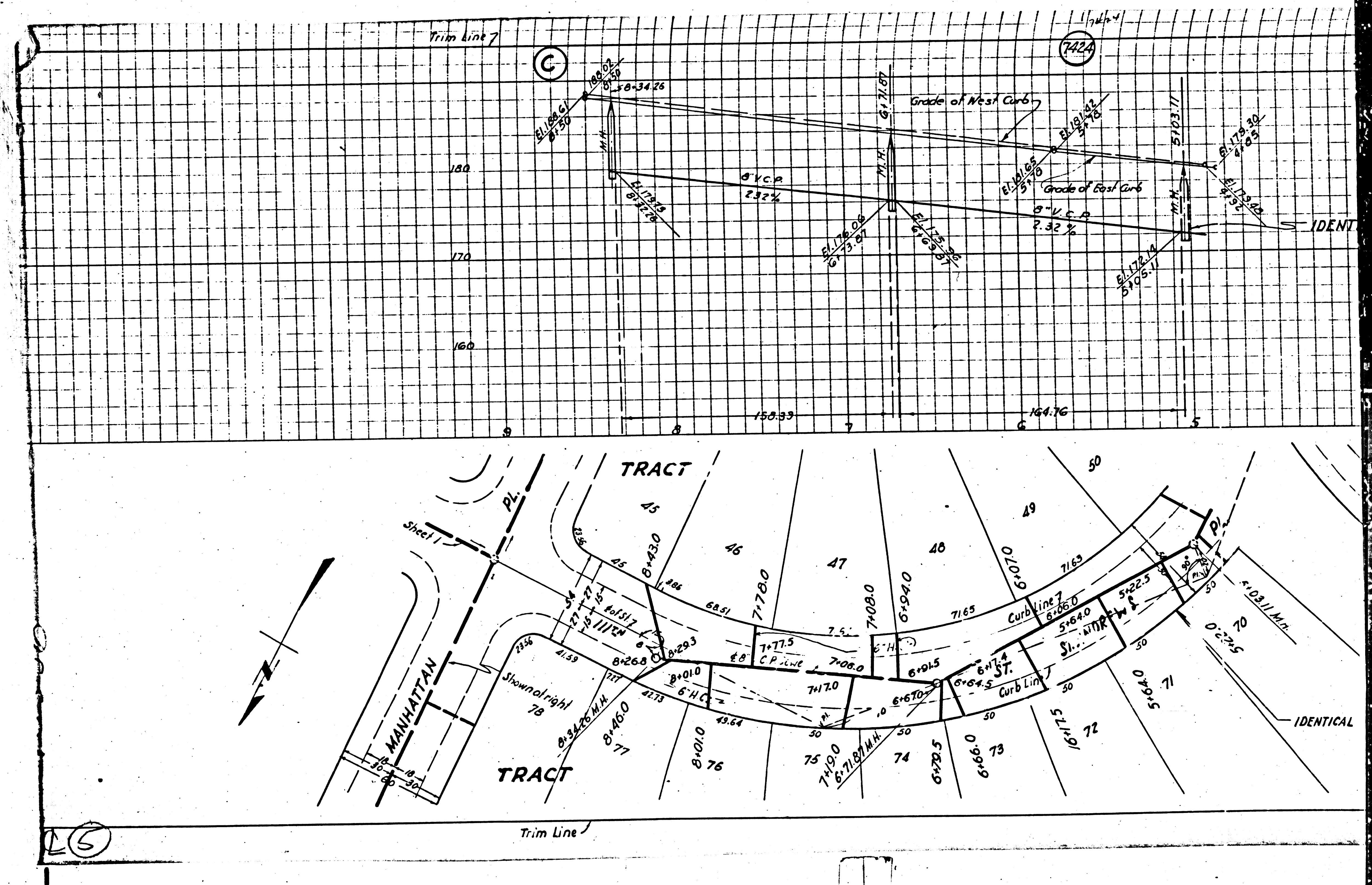
M

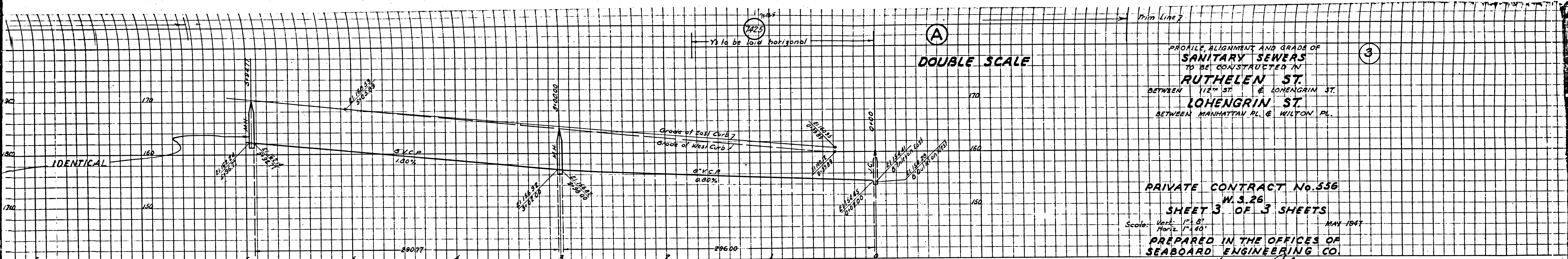
M6



M-3

M-5





DOUBLE SCALE

PROFILE, ALIGNMENT AND GRADE OF
SANITARY SEWERS
 TO BE CONSTRUCTED IN
RUTHELEN ST
 BETWEEN 112TH ST. & LOHENGRIN ST.
LOHENGRIN ST
 BETWEEN MANHATTAN PL. & WILTON PL.

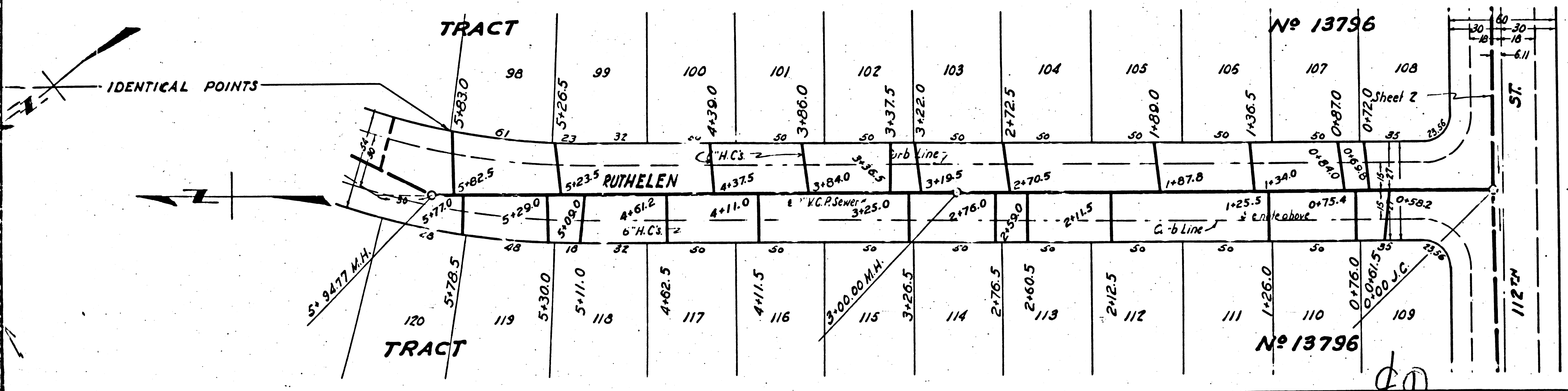
PRIVATE CONTRACT No. 536
 W. S. 26
SHEET 3 OF 3 SHEETS

Scale: Vert. 1" = 8'
 Horiz. 1" = 40'

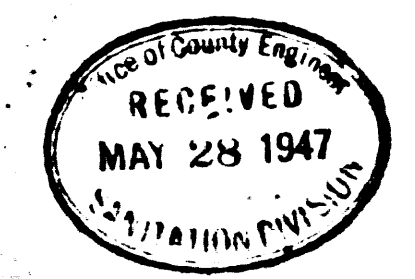
PREPARED IN THE OFFICES OF
SEABOARD ENGINEERING CO.

Mark A. Robie
 Reg. C.E. No. 2053

FOR LEGEND
 See Plan No. S-a-64



FOR CONSTRUCTION NOTES, SEE SHEET 1.



COUNTY OF LOS ANGELES, CALIFORNIA

APPROVED *C. E. Arnold*
 Deputy County Engineer

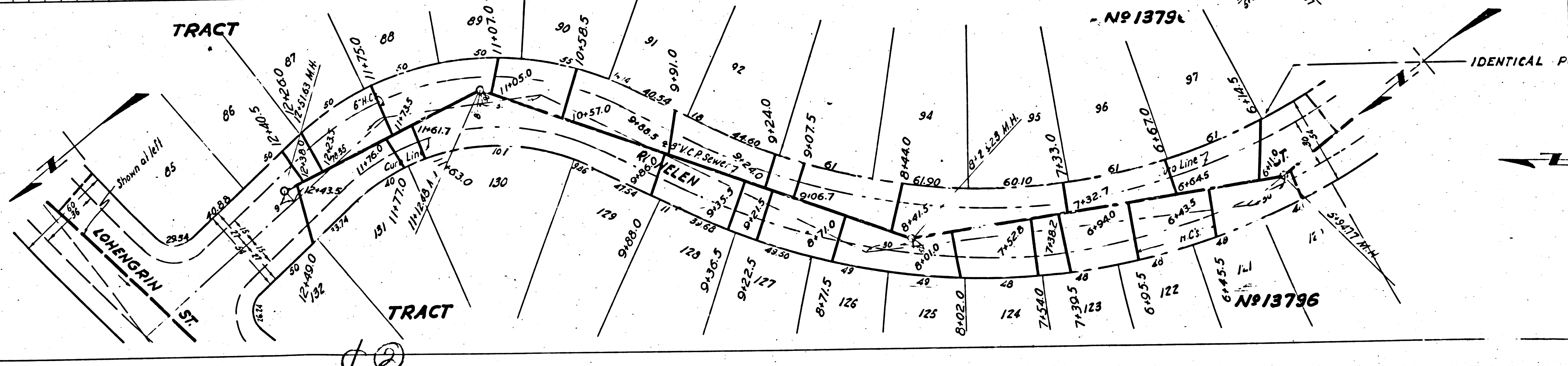
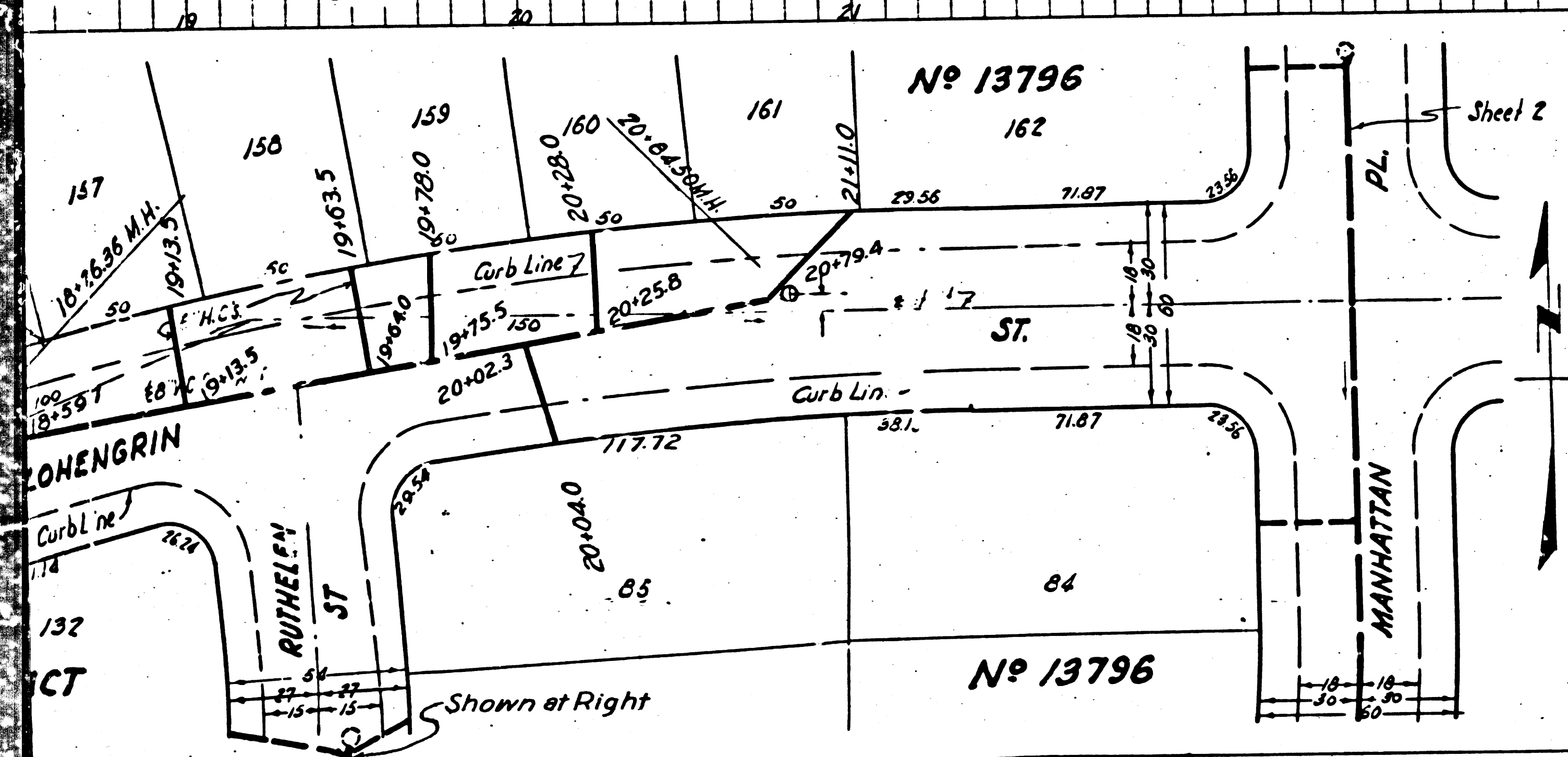
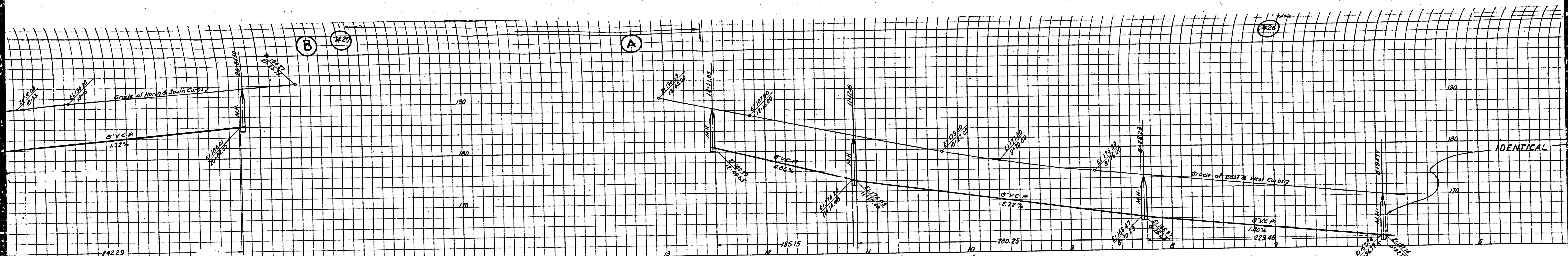
APPROVED *Robert L. ...*
 Chief Engineer of County Sanitation District No. 3

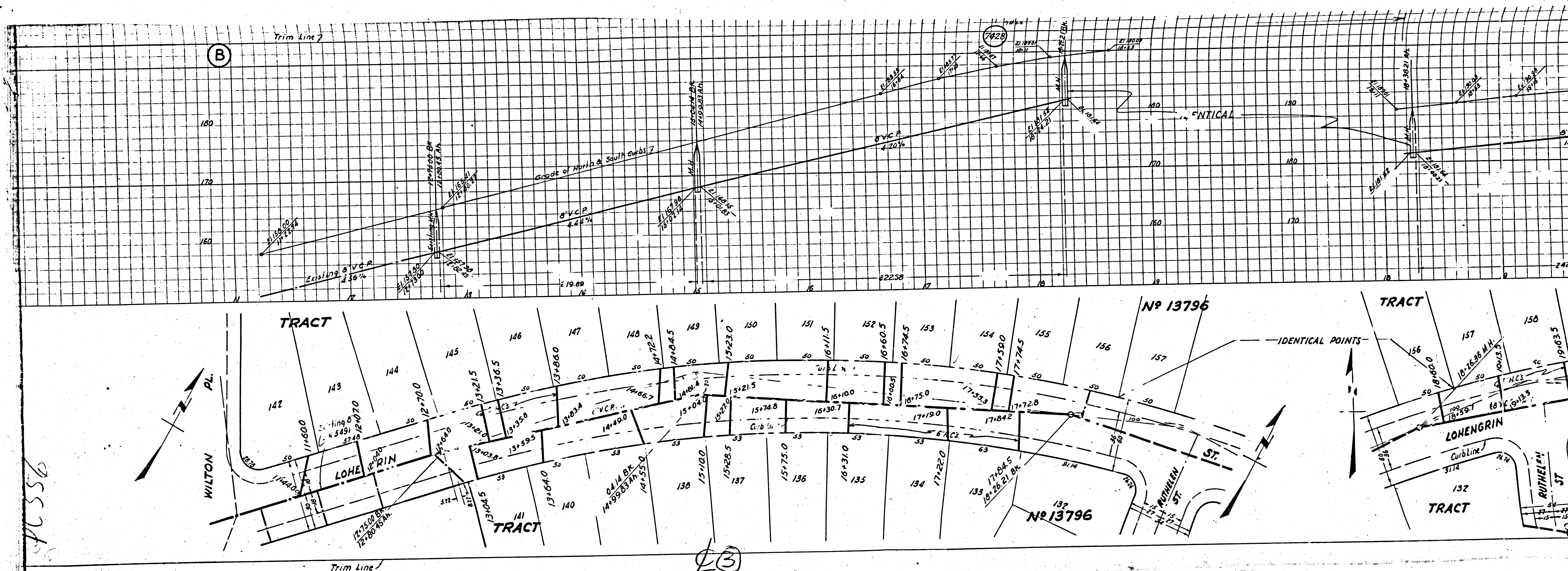
CHECKED *William H. Kelle* 1947
 Office of County Engineer, Reg. C.E. No. 3613

Final C.E.T.P. 11/21/47

BC 220

Trim Line





PL 556

M-3

M-9