

(A) DOUBLE SCALE

BENCH MARK

B.M. EN-25-Elev. 366.62-F.B. 168 pg 2
Olympiad Dr. & Escalon Ave.
Boyl' Spk. in Ld., B.C.R., S.E. Return

PROFILE ALIGNMENT AND GRADE OF
SANITARY SEWERS
TO BE CONSTRUCTED IN

KENWAY AVENUE
BETWEEN VERNON AVE. AND PRESIDIO DRIVE
OLYMPIAD DRIVE
BETWEEN ESCALON AVE. AND VALLEY RIDGE AVE.

SANITARY SEWER RIGHTS OF WAY
IN TRACT NO. 12654 M.B. Pgs.

PRIVATE CONTRACT NO. 570
W.S. 24
SHEET 1 OF 3 SHEETS

PREPARED IN THE OFFICES OF
LOS ANGELES INVESTMENT CO.

BY *S.P. Rowland*
REG. C.E. NO. 1629

FOR LEGEND
SEE PLAN NOS. 6-64

NOTE:
GRADES TO WHICH THIS IMPROVEMENT IS TO BE CONSTRUCTED ARE SHOWN ON PLANS AND PROFILE.
GRADE POINTS FOR TOP OF CURB'S CENTER LINE OR CENTER LINE OF ALLEY ARE SHOWN BY
CIRCLES ON PROFILES. AT ALL POINTS BETWEEN DESIGNATED POINTS THE GRADE SHALL BE ESTABLISHED
SO AS TO CONFORM TO A STRAIGHT LINE DRAWN BETWEEN SAID DESIGNATED POINTS.
ELEVATIONS ARE GIVEN ABOVE U.S.G.S. DATUM OR MEAN SEA LEVEL.
THIS DRAWING AND THE DATA HEREON ARE HEREBY MADE A PART OF THE SPECIFICATIONS.
WORK SHALL BE CONSTRUCTED ACCORDING TO SPECIFICATIONS ON FILE IN THE OFFICE OF THE
COUNTY ENGINEER AND SHALL BE PROSECUTED ONLY IN THE PRESENCE OF THE COUNTY ENGINEER.
BIDDER WORK CAN BE STARTED THE CONTRACTOR MUST OBTAIN A PERMIT TO EXCAVATE IN COUNTY
ENGINEER, 700 FASHION LEAGUE BUILDING, SUFFICIENT TO COVER THE COST OF CONSTRUCTION
INSPECTION AND RECORD PLANS.
IF WORK IS TO BE DONE IN STATE HIGHWAY A PERMIT MUST BE OBTAINED FROM THE STATE OF
CALIFORNIA, DIVISION OF HIGHWAYS, STATE BUILDING AFTER MAKING THE DEPOSIT WITH THE
COUNTY ENGINEER.
COUNTY OF LOS ANGELES, CALIFORNIA.

APPROVED *F. Edwards*
CHIEF DEPUTY COUNTY ENGINEER

CHECKED BY *W.A. S. King* June 14, 1947
OFFICE OF COUNTY ENGINEER 830 CE HOUSE

- (1) USE 3-2-117 STANDARD MANHOLE FRAME AND COVER.
- (2) USE STANDARD STRENGTH PIPE (EXCEPT AS NOTED).
- (3) ALL STRUCTURES SHALL BE BRICK SEWER STRUCTURES 5'-10 1/4".
- (4) CONSTRUCT TOPS OF ALL STRUCTURES IN RIGHT-OF-WAY & ABOVE FINISH GRADE.
- (5) ENCASE FOUR FEET OF SEWER AT POINTS OF INTERFERENCE WITH POLES AS PER 5-0-119.
- (6) USE CEMENT MORTAR OR ALL VITRIFIED CLAY PIPE JOINTS.
- (7) RESURFACE ALL TRENCHES WITHIN PAVED AREAS TO MEET L.A. COUNTY ROAD DEPT. REQUIREMENTS.
- (8) NO REPRESENTATIVE OF THE COUNTY ENGINEER WILL SURVEY OR LAYOUT ANY PORTION OF THE WORK.
- (9) THE OWNER OR HIS AUTHORIZED REPRESENTATIVE SHALL FURNISH THE COUNTY ENGINEER WITH GRADE SHEETS AND STATIONS OF ALL HOUSE CONNECTIONS AND BRANCHES, AND SHALL PROVIDE STAKES FOR THEM AT THEIR PROPER LOCATIONS WITH STATIONING PLAINLY MARKED. ANY CHANGE OF LOCATION SHALL BE REQUESTED IN WRITING BY THE OWNER OR HIS REPRESENTATIVE.
- (10) NORTH CURB LINE SHOWN SOLID, SOUTH CURB LINE SHOWN DASHED ON PROFILE.
- (11) CONSTRUCT HOUSE CONNECTIONS WITH RISE OF 1/4" PER FT. (EXCEPT AS NOTED).
- (12) NO REVISIONS SHALL BE MADE IN THESE PLANS WITHOUT APPROVAL OF THE COUNTY ENGINEER.

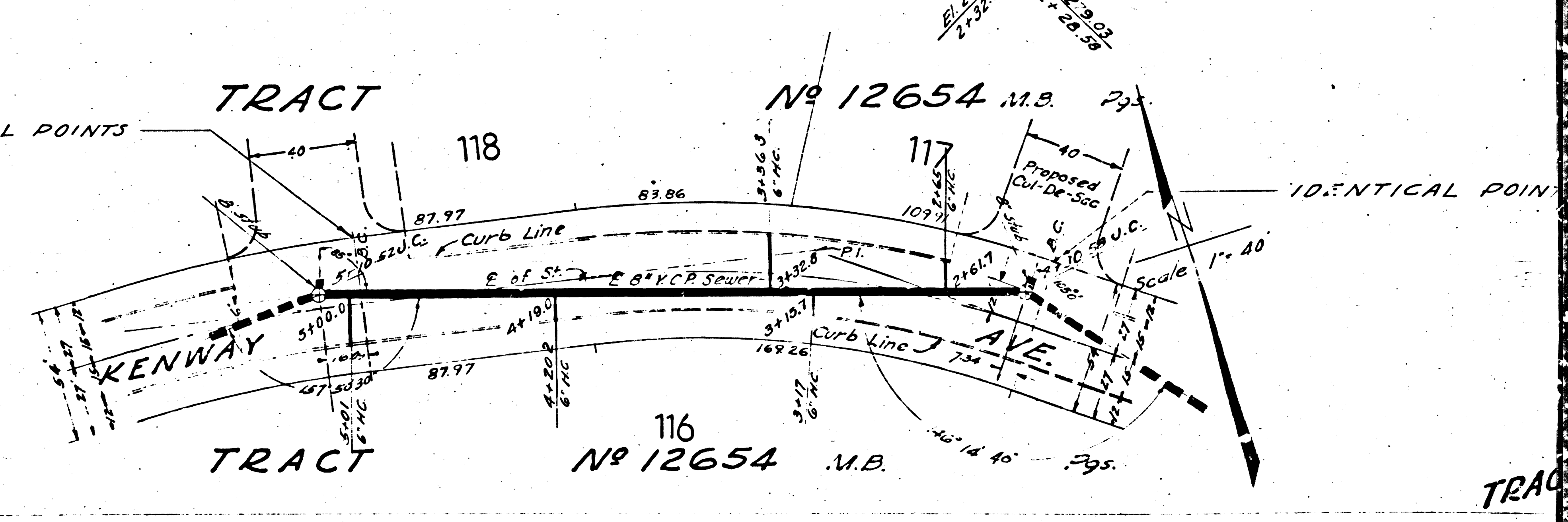
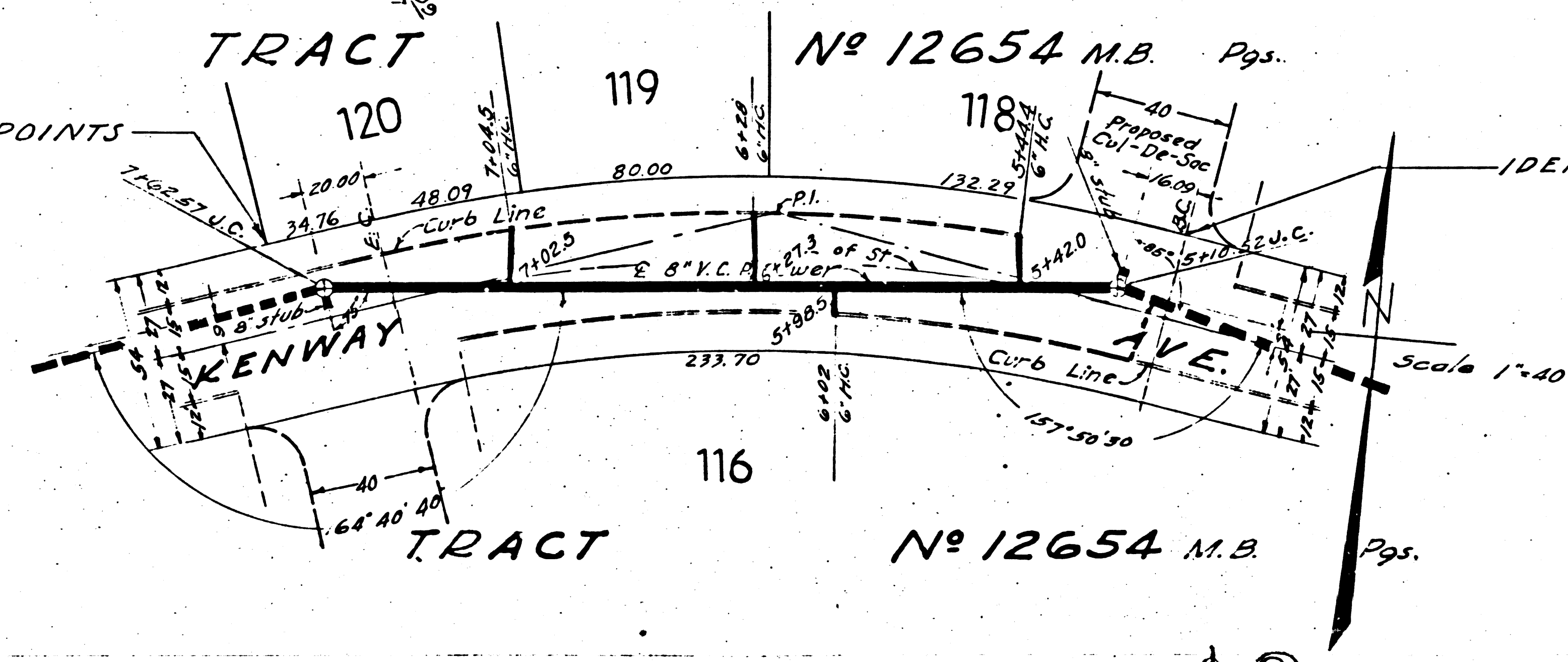
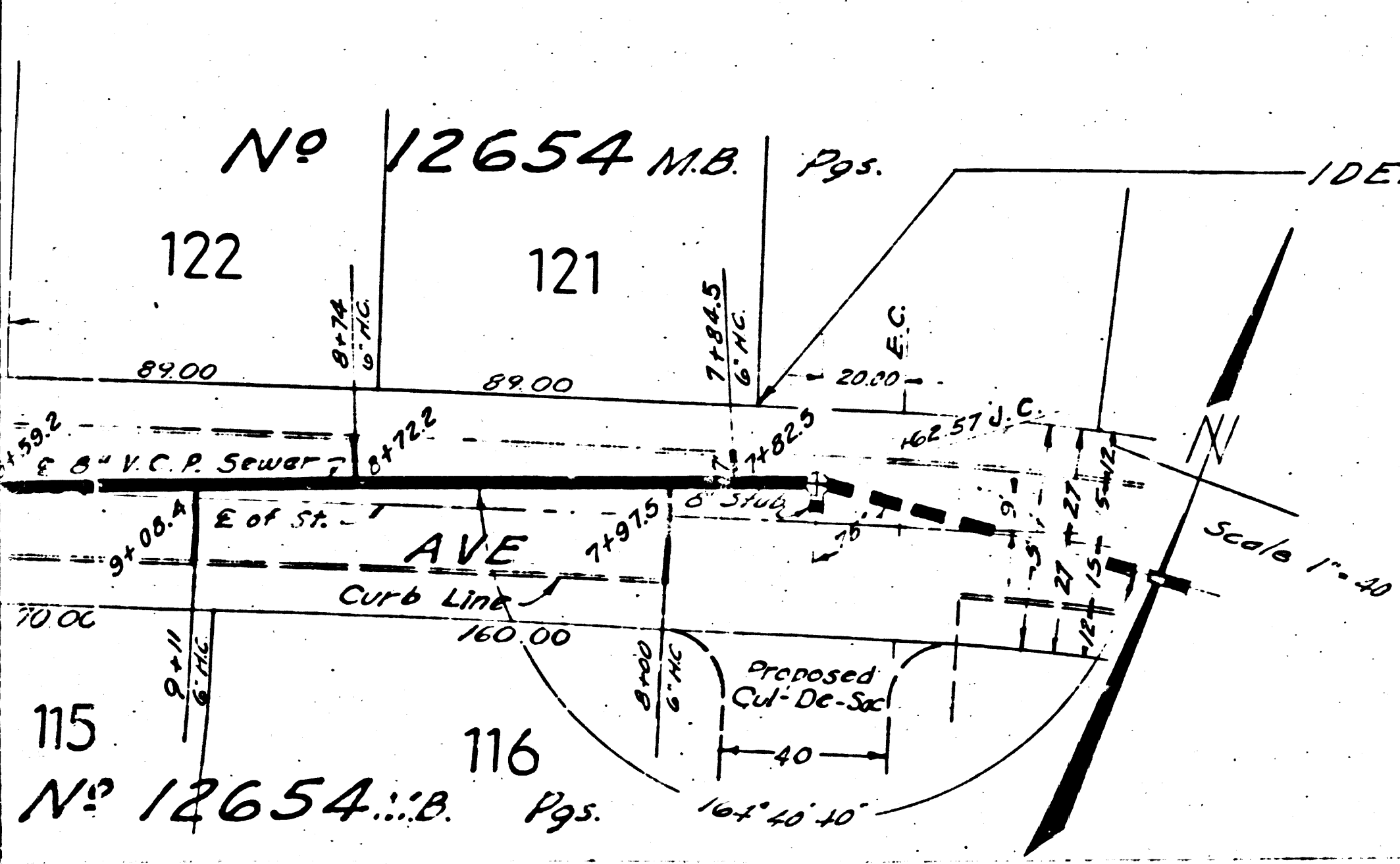
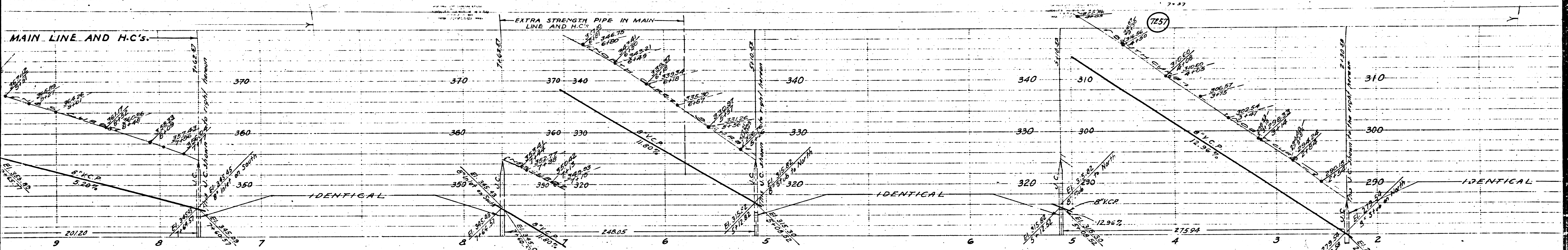
NOTE
ADD 5.715 FT. TO ALL ELEVATIONS SHOWN HEREON TO AGREE WITH U.S.G.S. DATUM PLANE.

SCALE - VERT. 1" = 5'
HORIZ. 1" = 40'

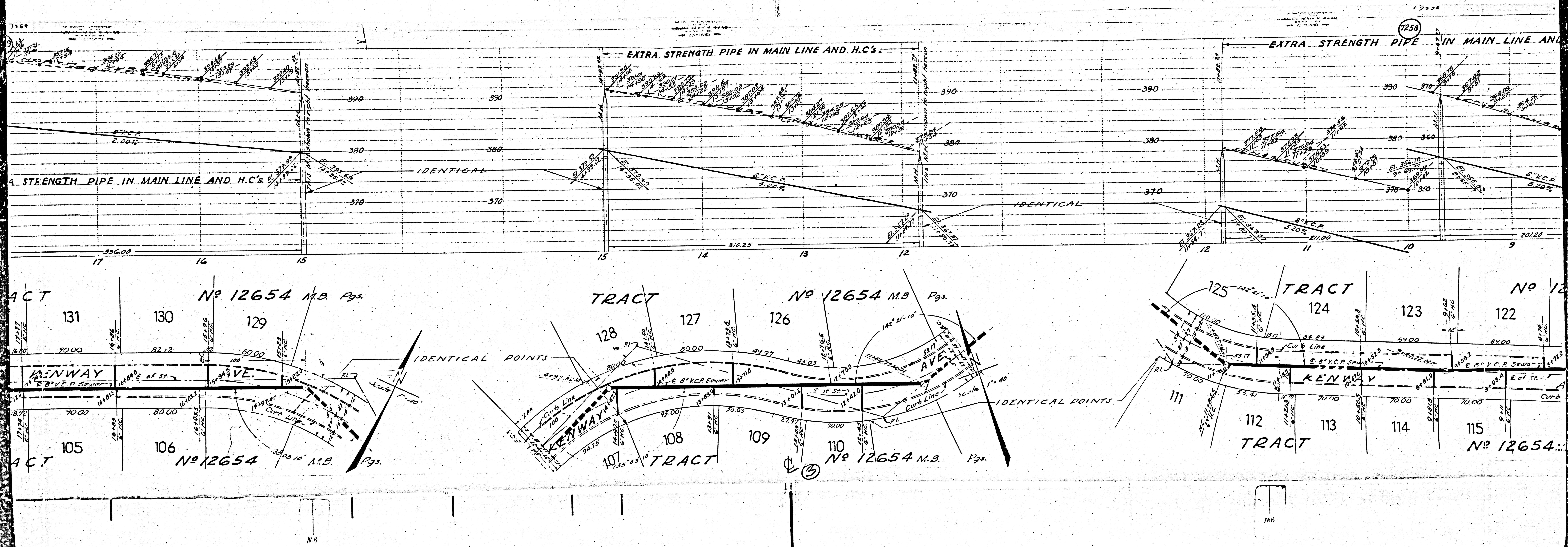
P.C. 570
INDEX MAP

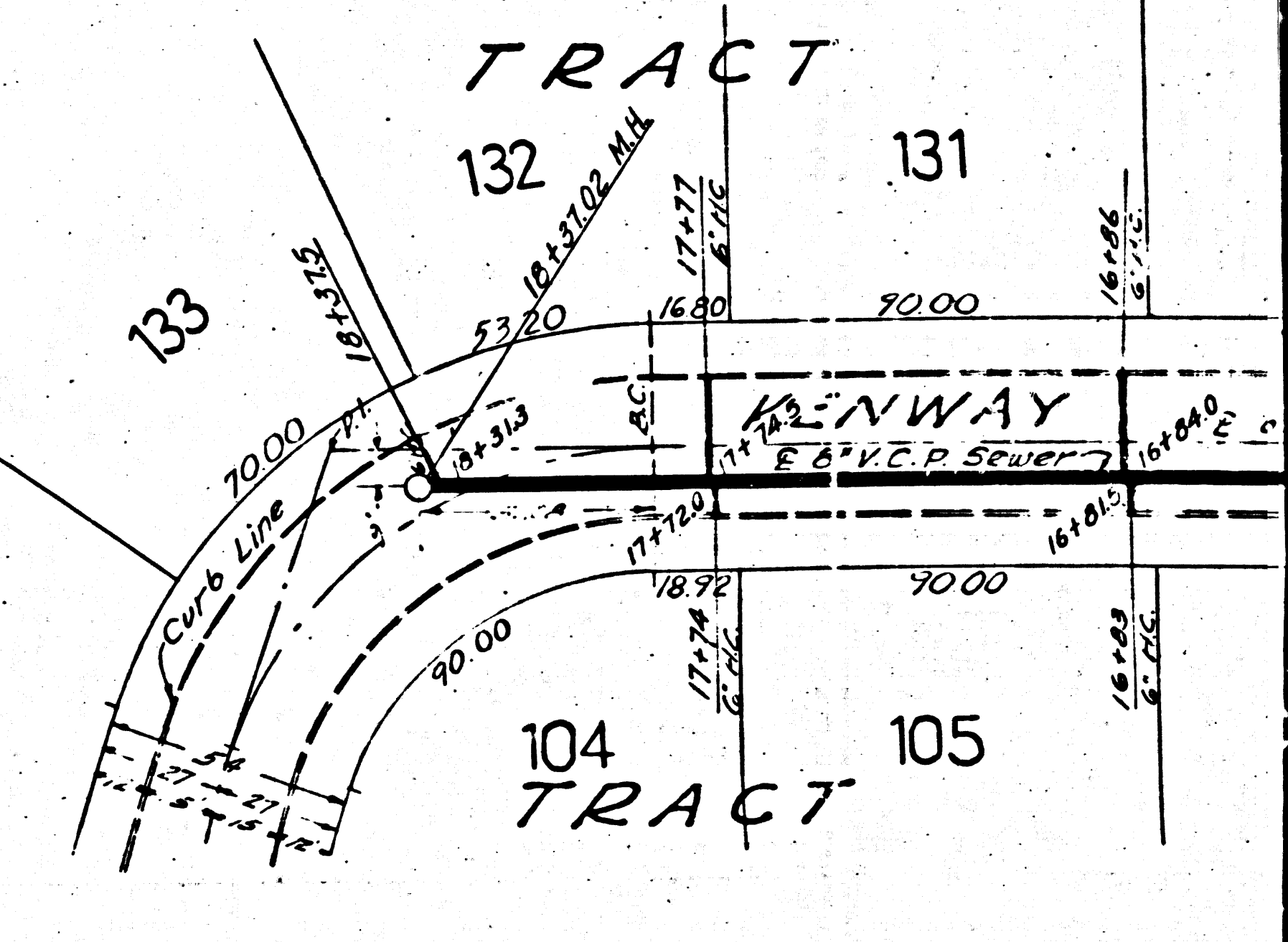
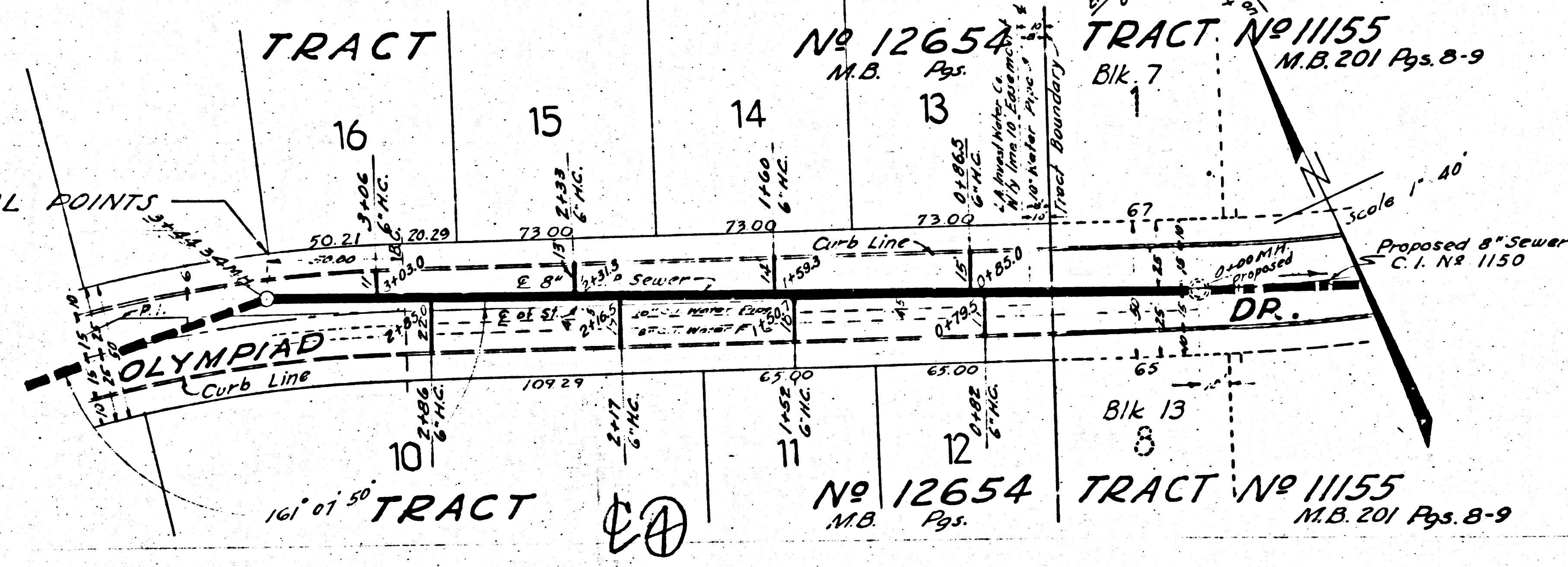
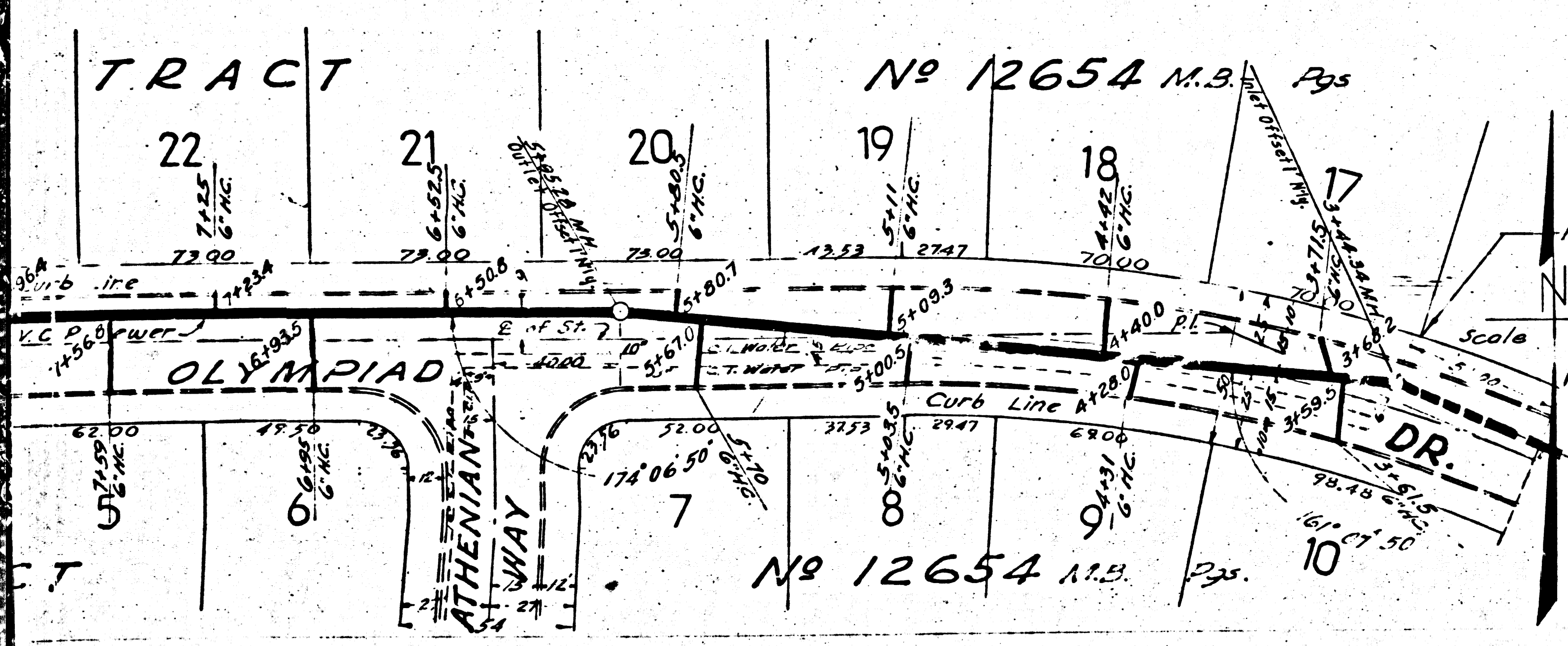
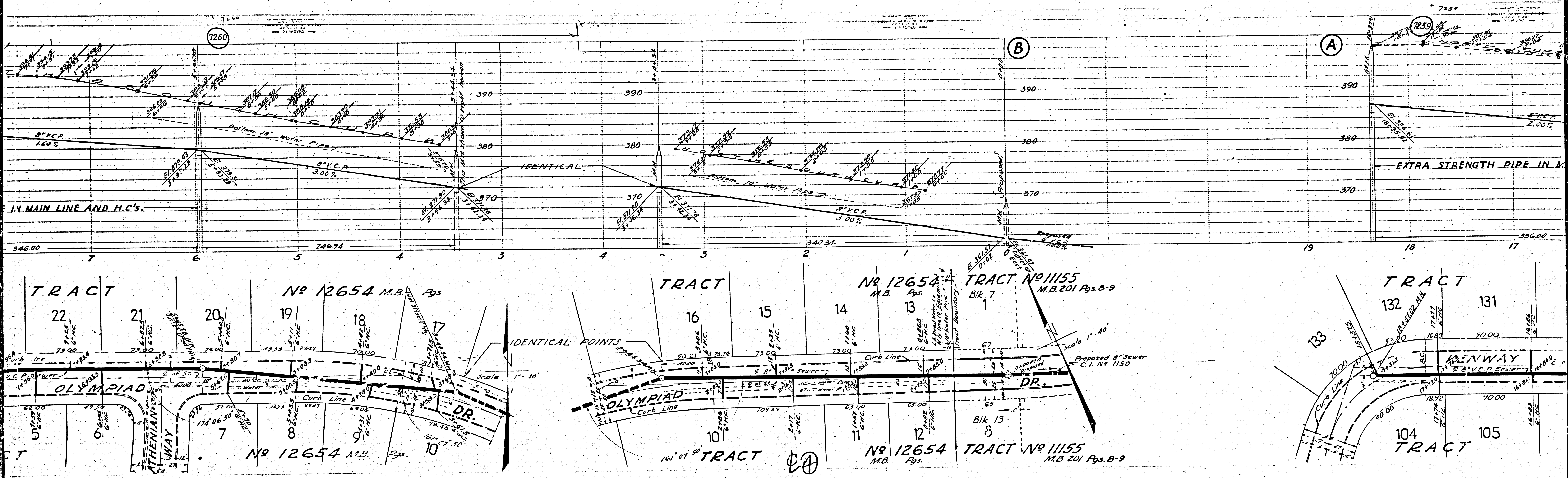
Final Ck. T.P. 10/21/47

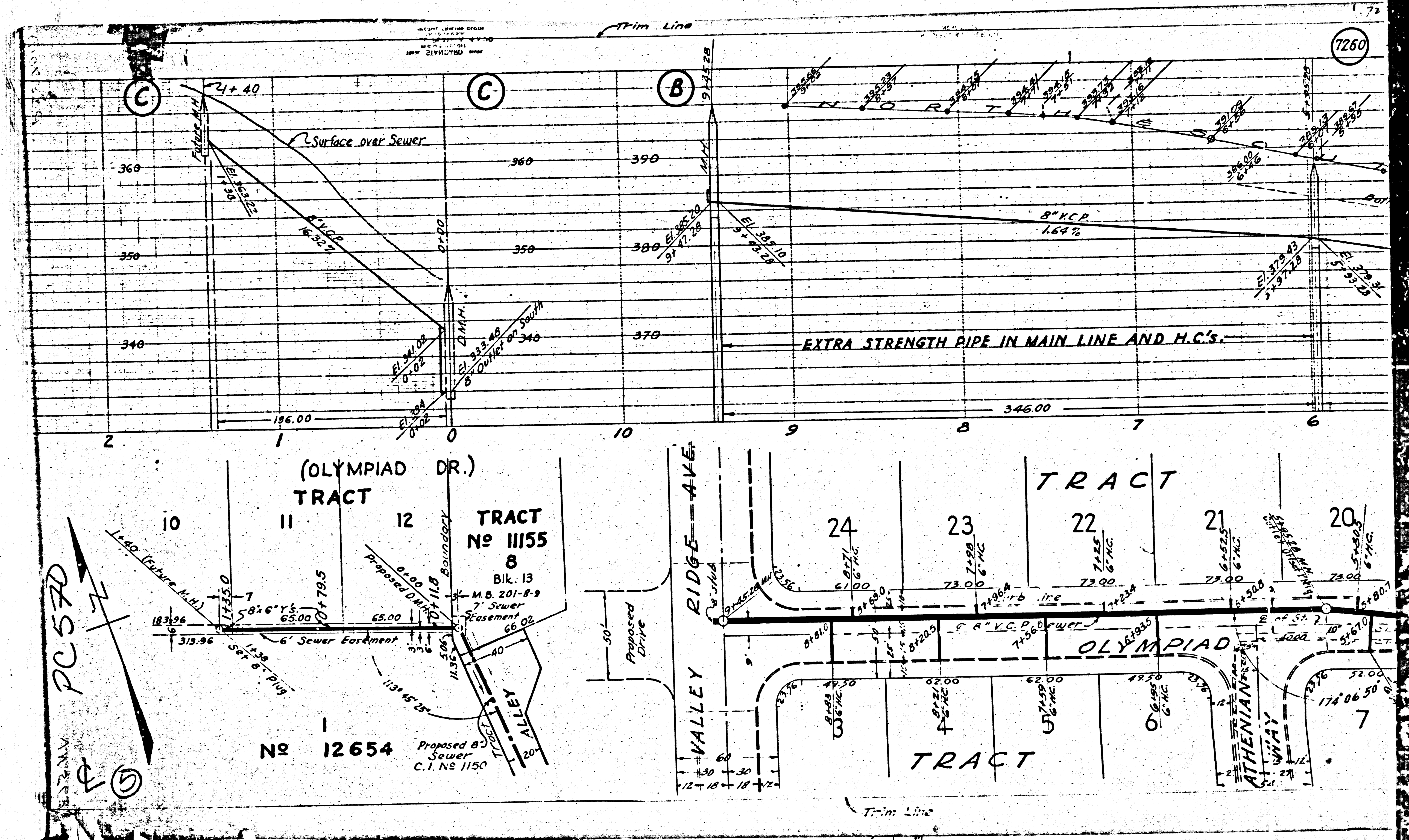
100 250



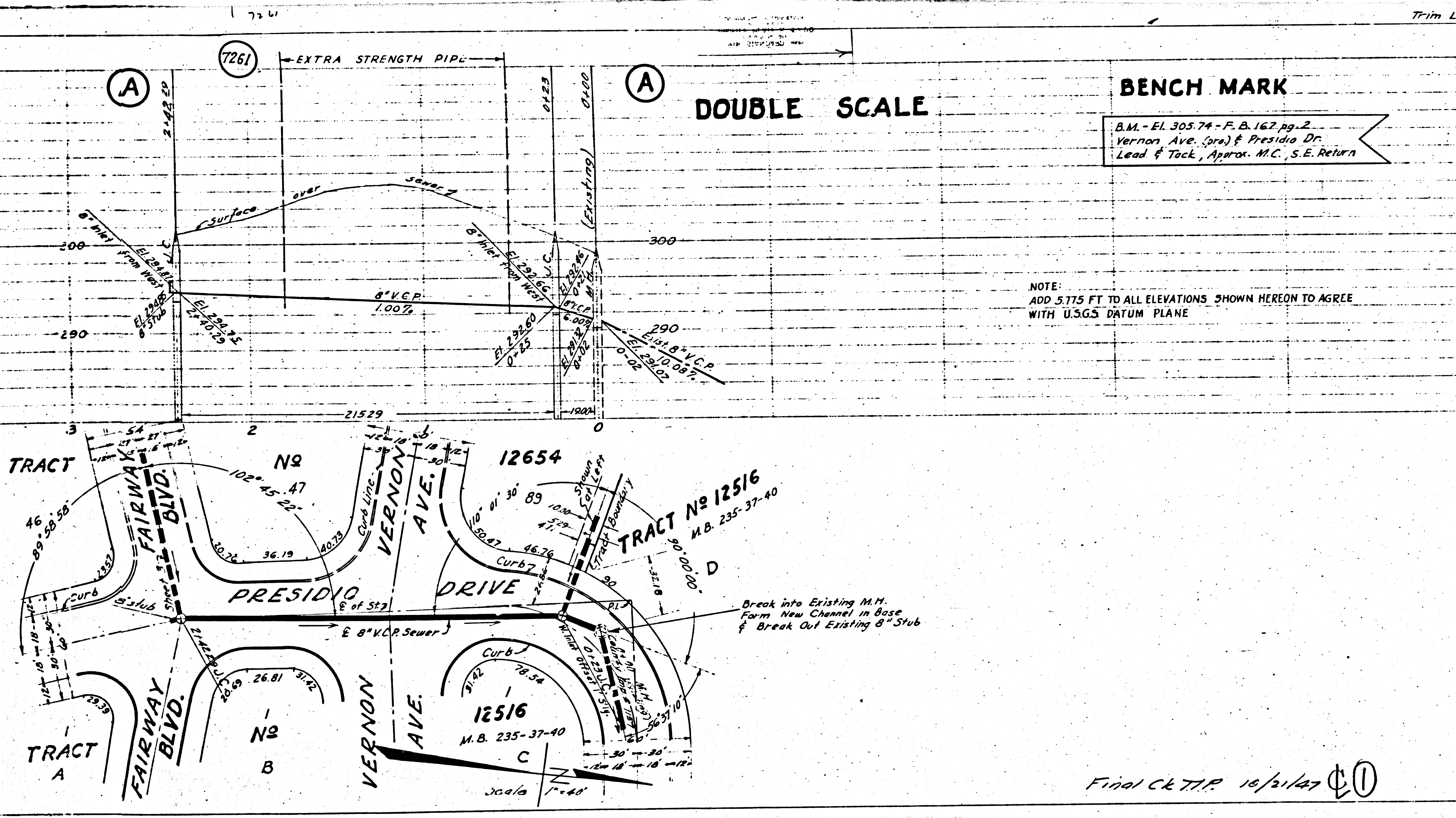
EQ







MS
 MS
 MS
 MS
 MS



(2)

**PROFILE ALIGNMENT AND GRADE OF
SANITARY SEWERS
TO BE CONSTRUCTED IN**

PRESIDIO DRIVE
FIRST 3/4 SOUTH OF KENWAY AVE. TO FAIRVIEW BLVD.

VERNON AVENUE
220± FT. WEST OF PRESIDIO DRIVE TO VALLEY RIDGE AVE.

SANITARY SEWER RIGHTS OF WAY

IN TRACT NO. 12654 M.B. Pgs.
**PRIVATE CONTRACT NO 570
WS 24**

SCALE VERT. 1" = 8'
HORIZ. 1" = 40'

SHEET 2 OF 3 SHEETS
JUNE 1947
PREPARED IN THE OFFICES OF
LOS ANGELES INVESTMENT CO.

BY: *S.F. Mander*
REG. CE. NO. 1629

FOR LEGEND
(SEE PLAN NO. 5-a-64)

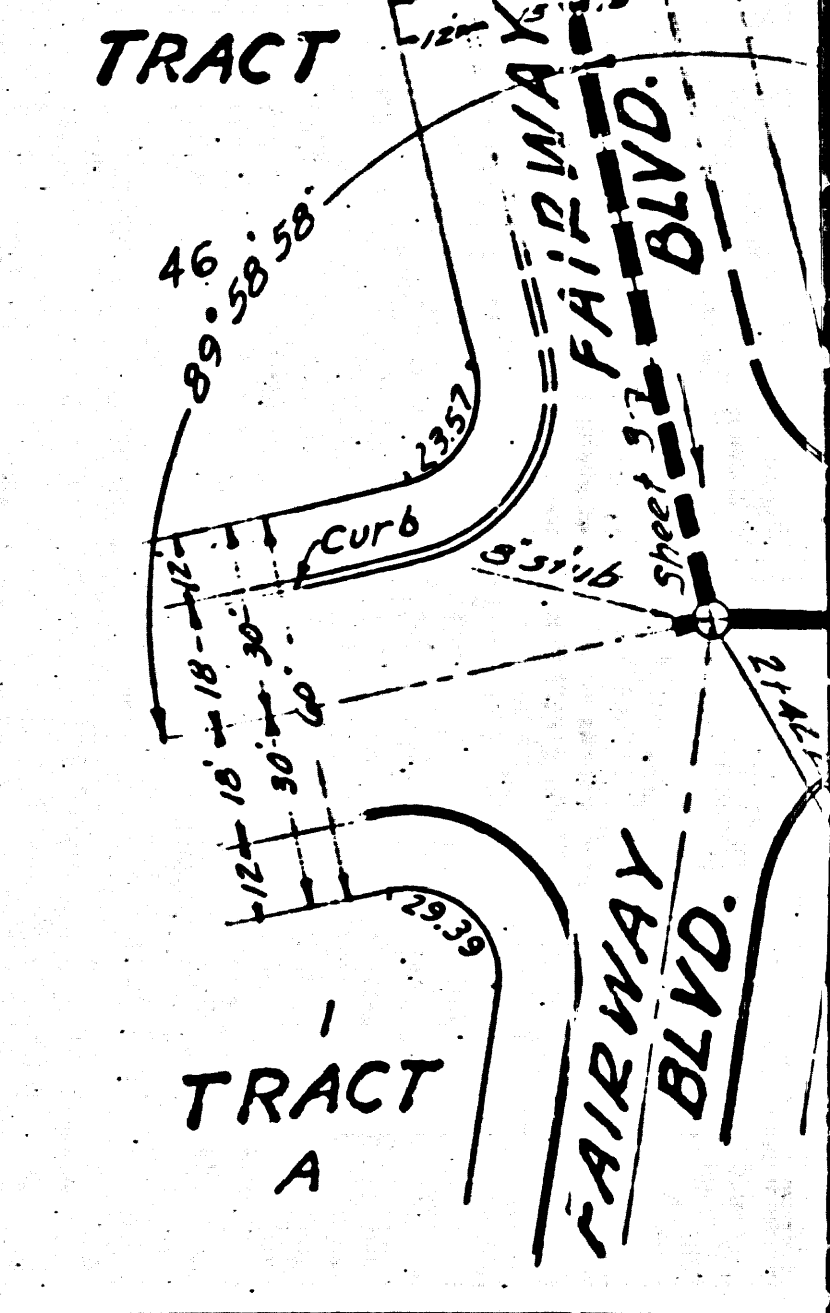
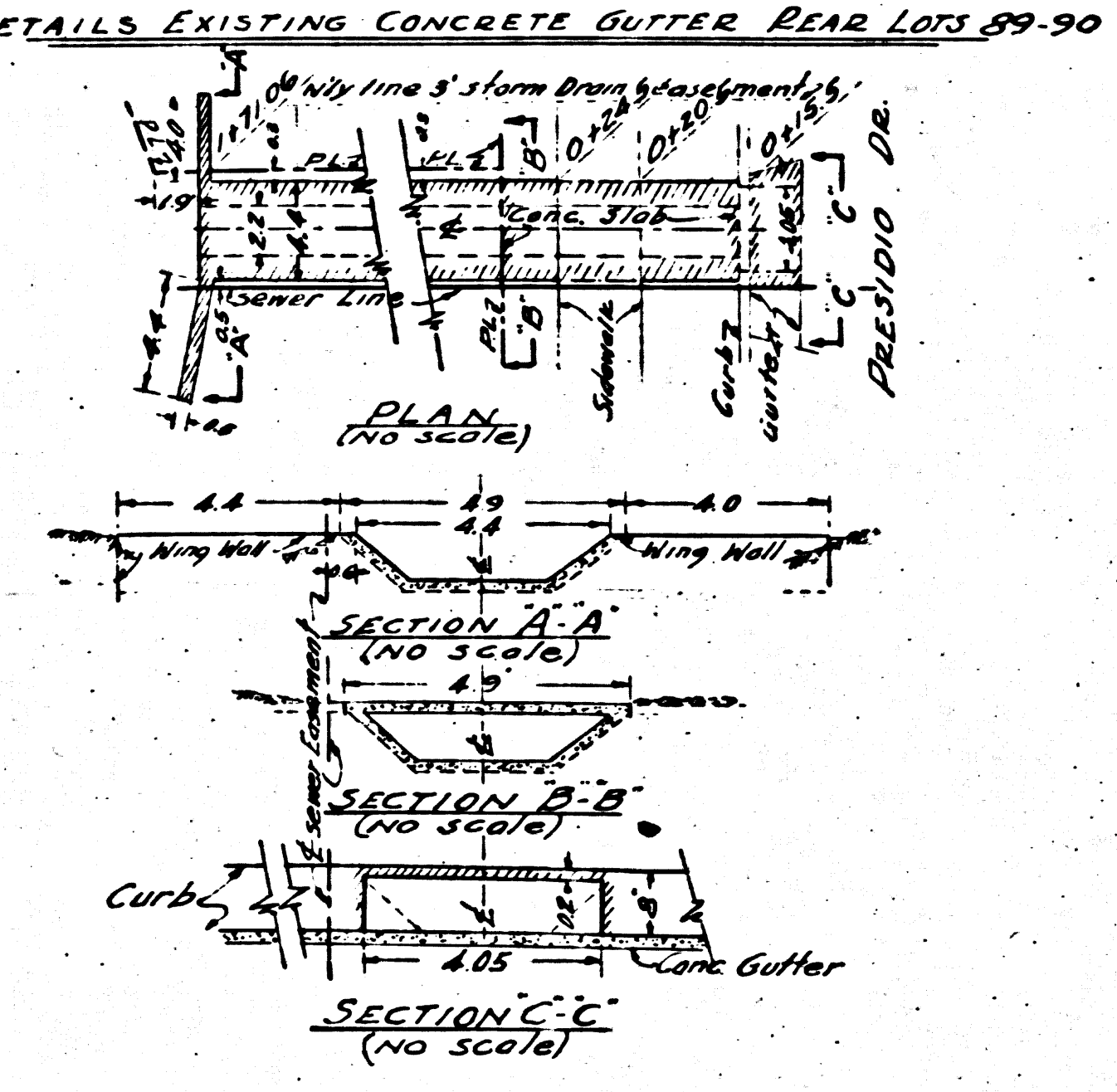
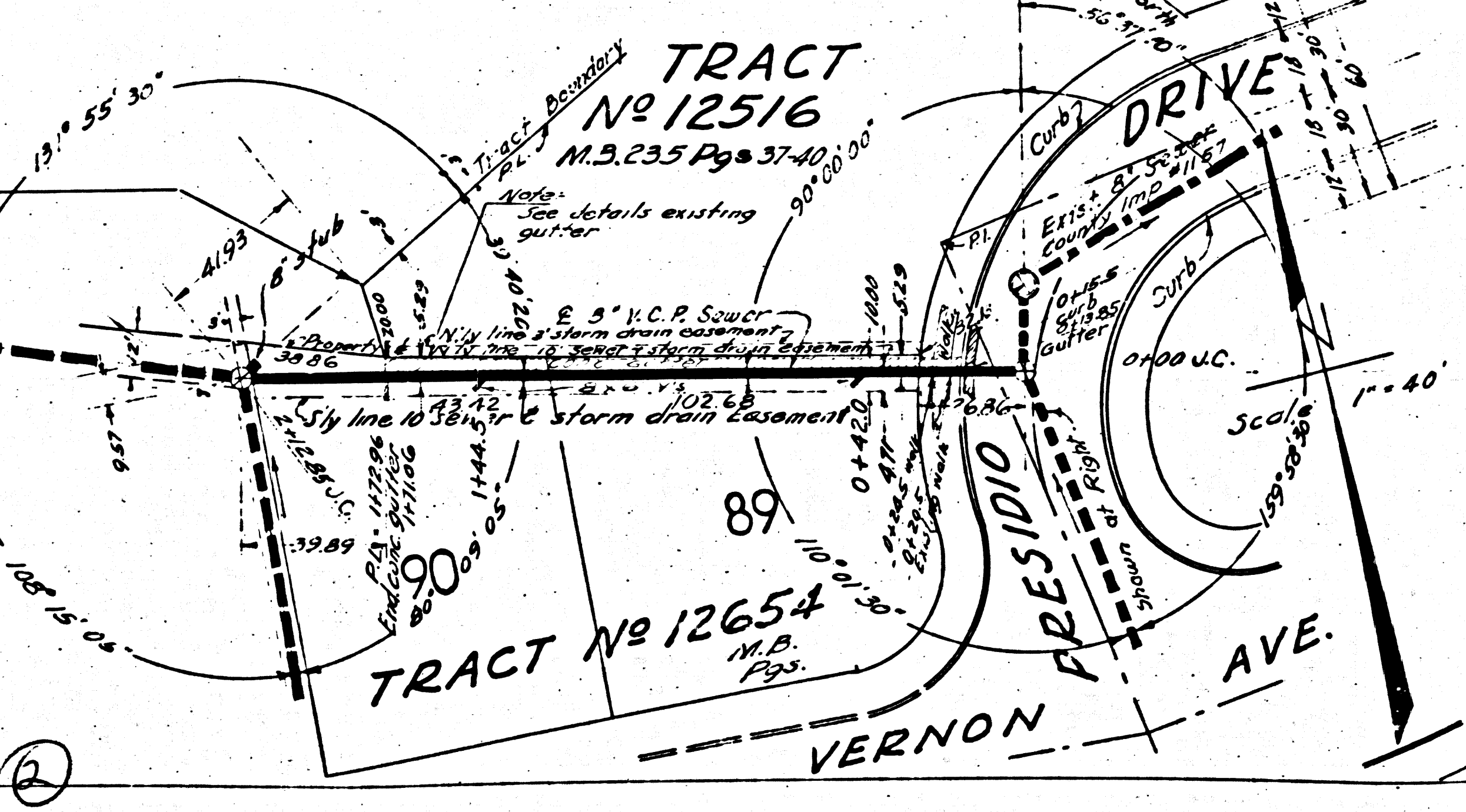
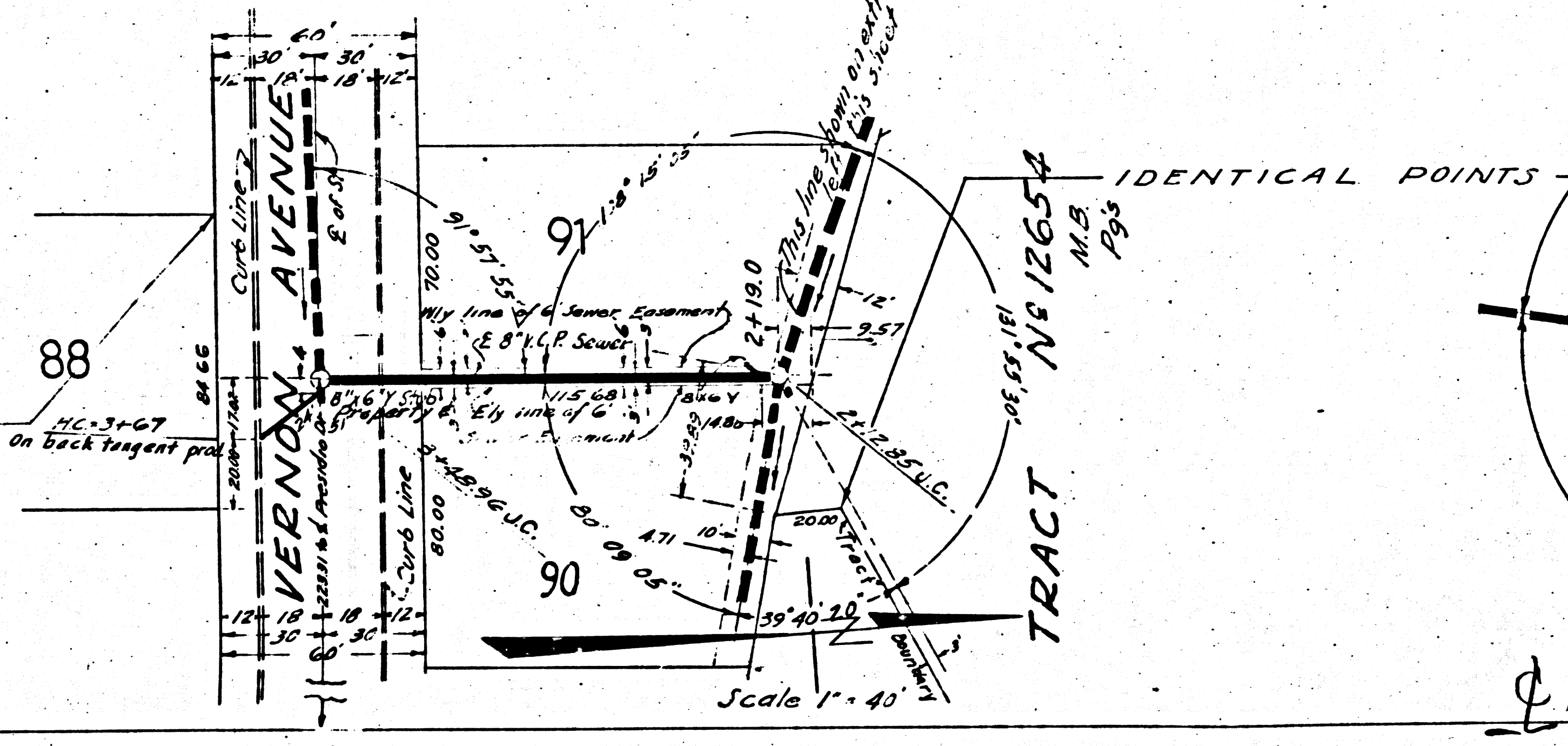
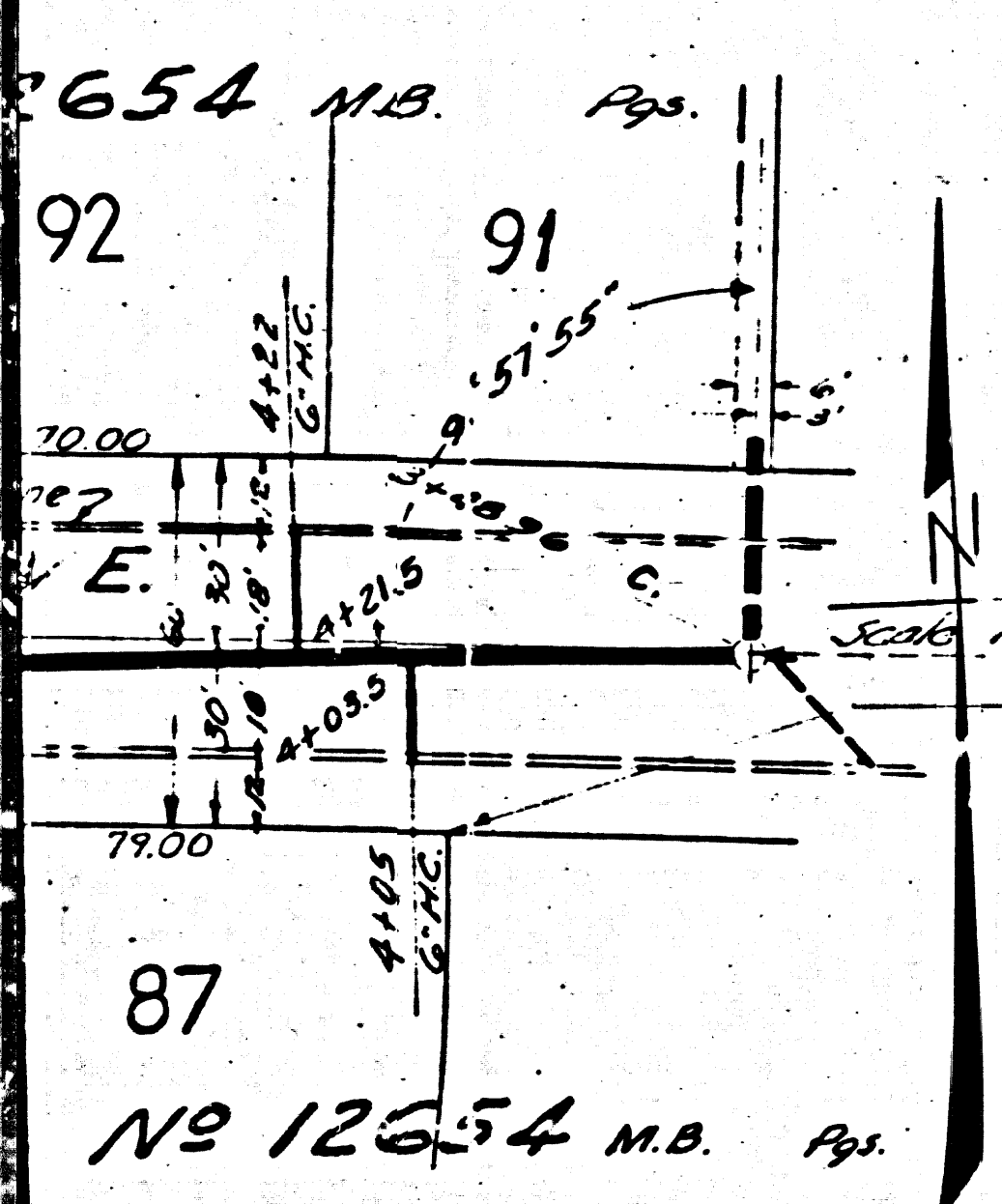
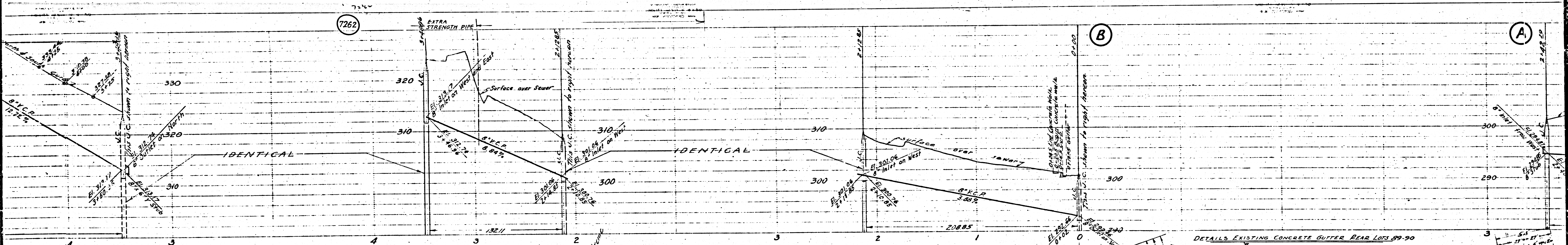
NOTE: FOR DETAILS SEE SHEET NO. 1

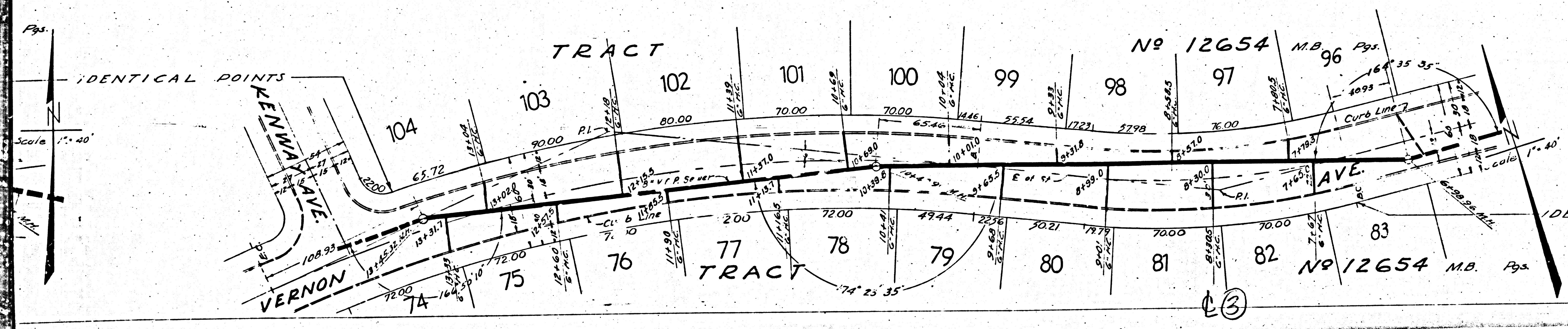
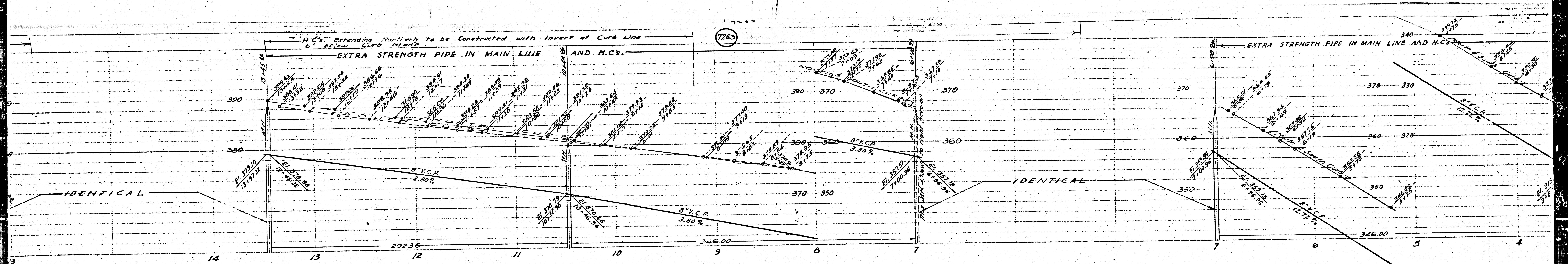
COUNTY OF LOS ANGELES, CALIFORNIA

APPROVED: *E. E. Smith*
CHIEF DEPUTY COUNTY ENGINEER

CHECKED BY: *Frank B. Knox* June 16, 1947
OFFICE OF COUNTY ENGINEER REG. CE. NO. 6622

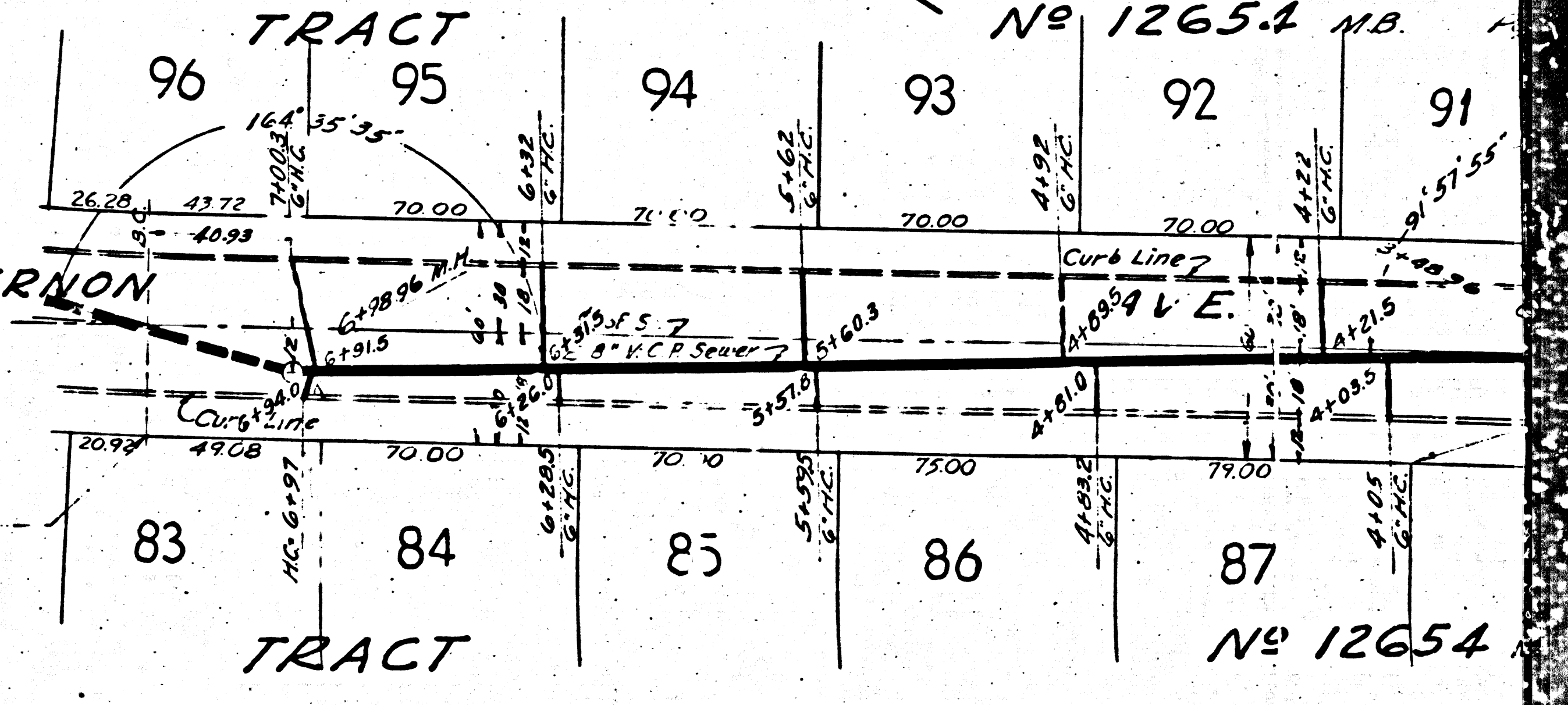
Final Ck. T.P. 10/21/47 (1)



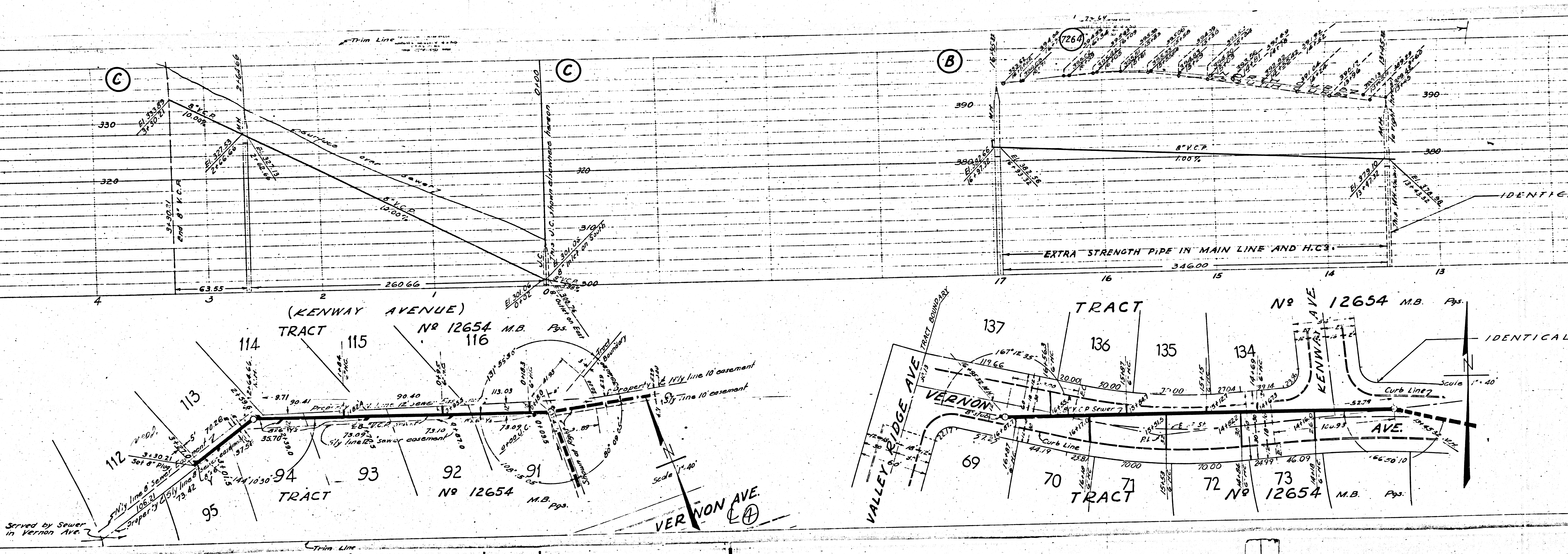


Scale 1" = 40'

M.B.



E 10



Served by Sewer in Vernon Ave.

VERNON AVE. \odot

EXTRA STRENGTH PIPE IN MAIN LINE AND H.C.S.

IDENTICAL

IDENTICAL

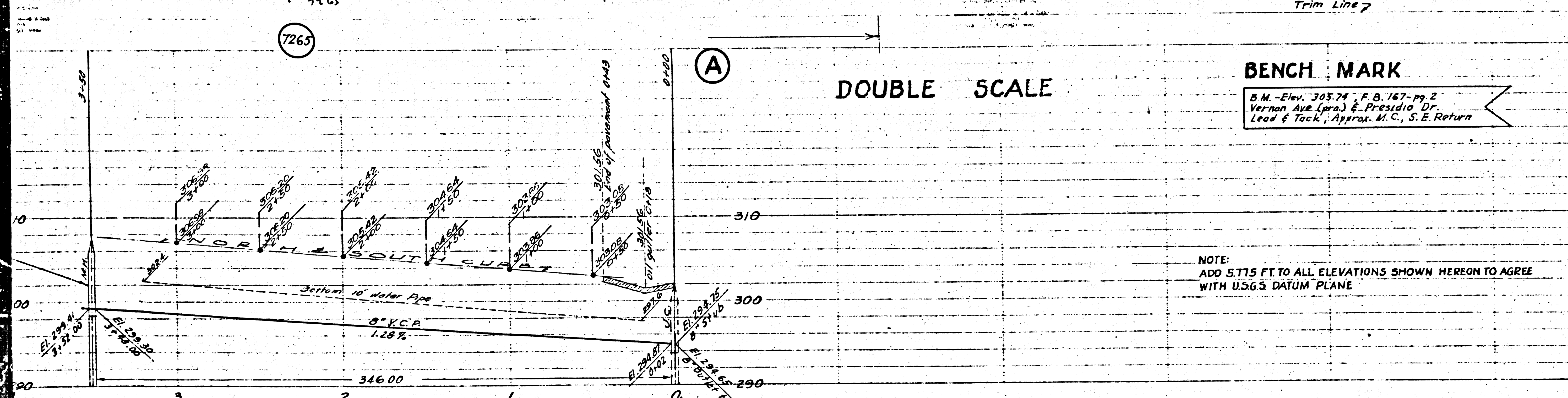
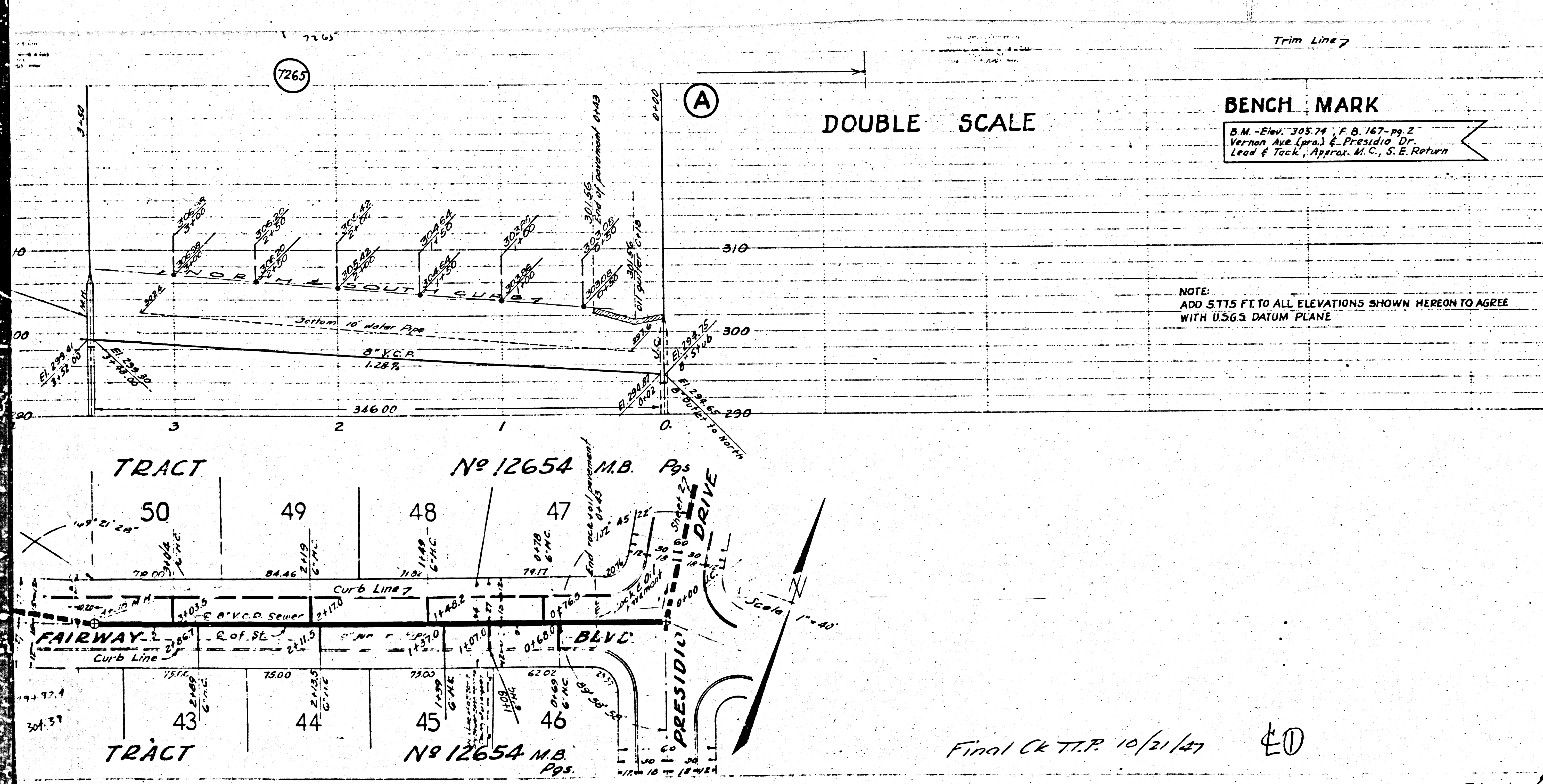
M5

M5

075.09

④

⑤

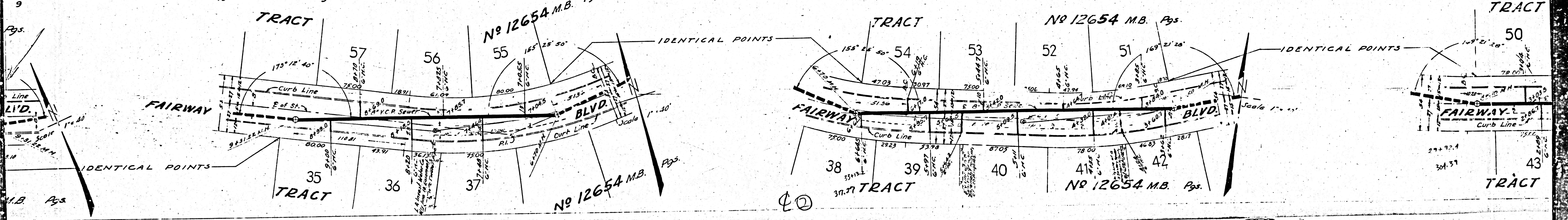
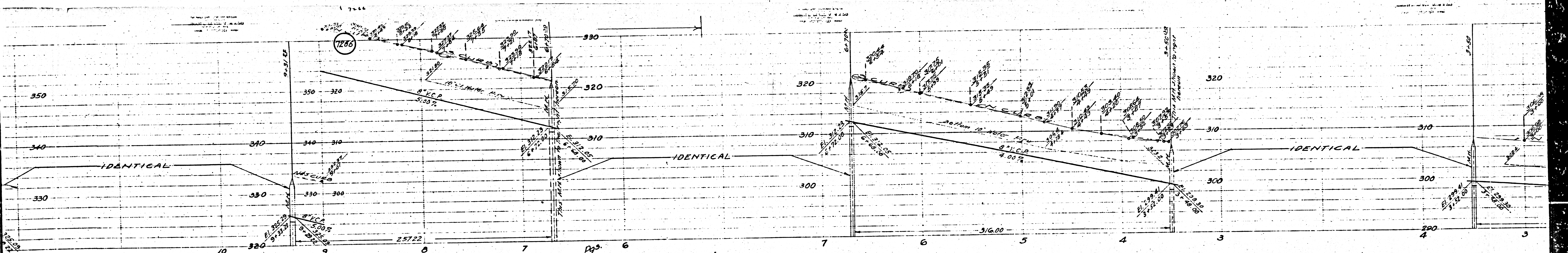
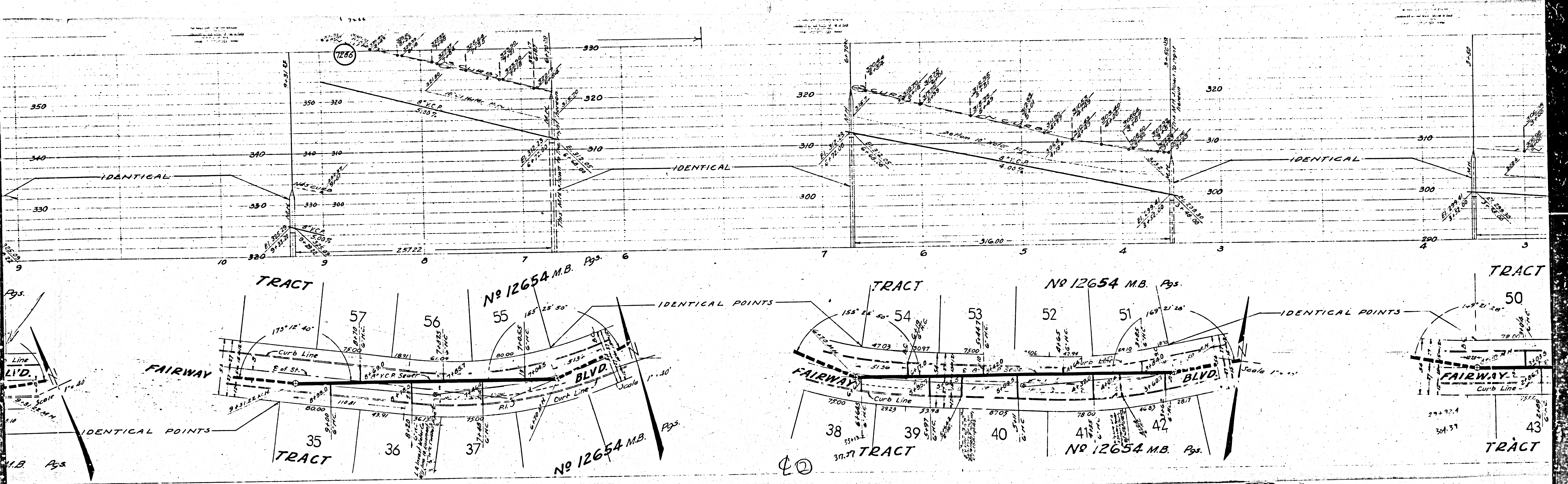


7265
 (A)
 DOUBLE SCALE
 BENCH MARK
 PROFILE ALIGNMENT AND GRADE OF
SANITARY SEWERS
 TO BE CONSTRUCTED IN
 (3)
FAIRWAY BLVD.
 PRESIDIO DRIVE TO VALLEY RIDGE AVENUE
SANITARY SEWER RIGHTS OF WAY
 IN TRACT NO. 12654 MB. Pgs.
PRIVATE CONTRACT NO 570
 W.S. 24
 SHEET 3 OF 3 SHEETS
 PREPARED IN THE OFFICES OF
LOS ANGELES INVESTMENT CO.
 JUNE 1947
 BY: *R. J. Howard*
 REG. CE NO 1629
 FOR LEGEND
 (SEE PLAN NO. 5-664)
 NOTE:
 ADD 5.715 FT. TO ALL ELEVATIONS SHOWN HEREON TO AGREE
 WITH U.S.G.S. DATUM PLANE
 SCALE: Vert. 1"=8'
 Horiz. 1"=40'
 NOTE:
 FOR DETAILS SEE SHEET NO. 1

COUNTY OF LOS ANGELES, CALIFORNIA
 APPROVED *R. J. Howard*
 CHIEF DEPUTY COUNTY ENGINEER
 CHECKED BY *[Signature]* June 6, 1947
 OFFICE OF COUNTY ENGINEER, ROOM NO. 6427

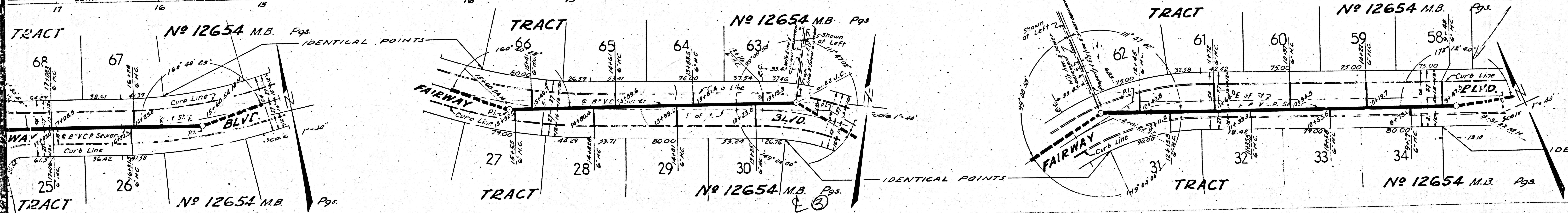
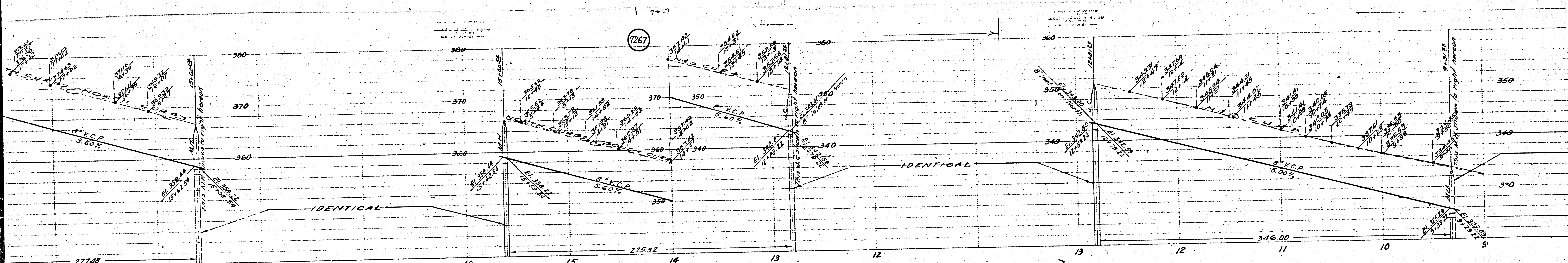
Final Ck T.P.R. 10/21/47 £D

DU 220



M8

M8



M3

M5

PC 570

