

B.M. x On West Headwall  
10'x4' Concrete Box Culvert  
L.A. Co. Elev. 146.27

USE EXTRA STRENGTH PIPE  
USE CEMENT MORTAR FOR ALL VITRIFIED CLAY PIPE JOINTS  
ENCASE FOUR FEET OF SEWER AT POINTS OF INTERFERENCE WITH POLES AS PER S-a-119

ALL STRUCTURES SHALL BE BRICK SEWER STRUCTURES AS PER PLAN NO. S-a-104 EXCEPT AS NOTED  
USE STANDARD MANHOLE FRAMES AND COVERS AS PER PLAN NO. S-a-117 EXCEPT AS NOTED  
CONSTRUCT TOPS OF ALL STRUCTURES IN RIGHTS OF WAY 6" ABOVE FINISHED GRADE  
RESURFACE ALL TRENCHES WITHIN PAVED AREA TO MEET LOS ANGELES COUNTY ROAD DEPT. REQUIREMENTS

NO REVISIONS SHALL BE MADE IN THESE PLANS WITHOUT APPROVAL OF THE COUNTY ENGINEER  
NO REPRESENTATIVE OF THE COUNTY ENGINEER WILL SURVEY OR LAY OUT ANY PORTION OF THE WORK  
THE OWNER OR HIS AUTHORIZED REPRESENTATIVE SHALL FURNISH THE COUNTY ENGINEER WITH GRADE SHEETS AND STATIONS OF ALL HOUSE CONNECTIONS AND Y BRANCHES, AND SHALL PROVIDE STAKES FOR THEM AT THEIR PROPER LOCATIONS WITH STATIONING PLAINLY MARKED. ANY CHANGE OF LOCATION SHALL BE REQUESTED IN WRITING BY THE OWNER OR HIS REPRESENTATIVE.

APPROVAL OF THIS PLAN DOES NOT CONSTITUTE A PERMIT TO DISCHARGE INDUSTRIAL WASTE INTO THIS SEWER.

DEPTH OF SEWER APPROVED SUBJECT TO PROVISIONS OF LETTER DATED JULY 11<sup>th</sup> 1947 FROM CENTRAL MANUFACTURING DISTRICT TO COUNTY ENGINEER.

PROFILE, ALIGNMENT AND GRADE OF  
**SANITARY SEWERS**  
TO BE CONSTRUCTED IN

**BANDINI BOULEVARD**  
FROM CENTER LINE OF GARFIELD AVE  
EXTENDING WESTERLY 1840 FT.

PRIVATE CONTRACT NO. **573**  
W. S. 36

SCALE: VERT. 1"=4'  
HORIZ. 1"=60'  
JULY 8 1947  
PREPARED IN THE OFFICES OF  
**CENTRAL MANUFACTURING DISTRICT, INC.**

BY: *Alfred Jones*  
REG. C. E. NO. 1022

FOR LEGEND  
SEE PLAN NO. S-a-44

NOTE:-  
GRADES TO WHICH THIS IMPROVEMENT IS TO BE CONSTRUCTED ARE SHOWN ON PLANS AND PROFILES  
GRADE POINTS FOR TOP OF CURB, CENTER LINE OF STREET OR CENTER LINE OF ALLEY ARE SHOWN BY  
CIRCLES ON PROFILES AT ALL POINTS BETWEEN DESIGNATED POINTS THE GRADE SHALL BE ESTABLISHED  
SO AS TO CONFORM TO A STRAIGHT LINE DRAWN BETWEEN SAID DESIGNATED POINTS.  
ELEVATIONS ARE IN FEET ABOVE U. S. C. & G. DATUM OR MEAN SEA LEVEL.  
THIS DRAWING AND THE DATA HEREON ARE HEREBY MADE A PART OF THE SPECIFICATIONS  
WORK SHALL BE CONSTRUCTED ACCORDING TO SPECIFICATIONS ON FILE IN THE OFFICE OF THE COUNTY ENGINEER  
COUNTY ENGINEER AND SHALL BE PROSECUTED ONLY IN THE PRESENCE OF THE COUNTY ENGINEER  
BEFORE WORK CAN BE STARTED. THE CONTRACTOR MUST OBTAIN A PERMIT TO EXCAVATE IN  
COUNTY STREETS FROM THE L. A. COUNTY ROAD DEPT., 1104 HALL OF RECORDS, AND MAKE A DEPOSIT  
WITH THE COUNTY ENGINEER, 700 UNION LEAGUE BUILDING, SUFFICIENT TO COVER THE COST OF  
CONSTRUCTION INSPECTION AND RECORD PLANS.

COUNTY OF LOS ANGELES, CALIFORNIA

APPROVED FOR COLLECTION OF LIQUID INDUSTRIAL WASTE:  
ALFRED JONES COUNTY ENGINEER  
APPROVED: *Alfred Jones* COUNTY ENGINEER  
APPROVED: *C. E. Carter* ASST. CHIEF ENGINEER OF COUNTY SANITATION DISTRICT NO. 2  
BY: *Paul B. Carter* INDUSTRIAL WASTE ENGINEER

CHECKED BY: *Paul B. Carter* JULY 11 1947  
OFFICE OF COUNTY ENGINEER, REG. C. E. NO. 4422

INDEX MAP  
SCALE 1"=600'

Final Ck. J.A.P. 1/2/48

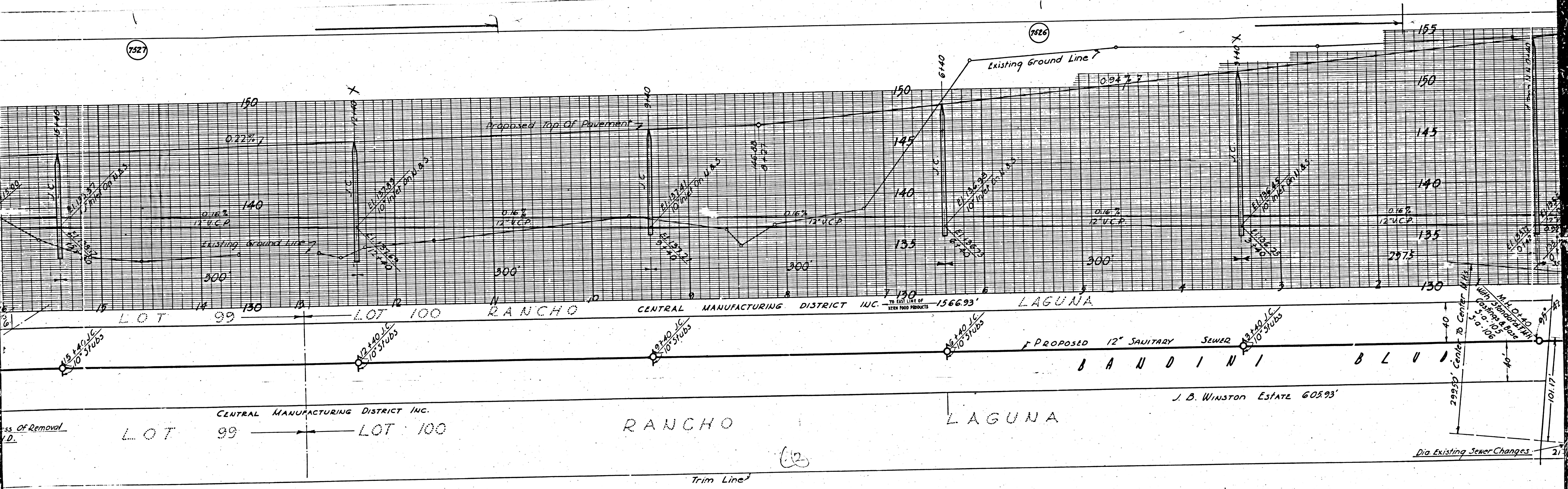
BC 25

40

S

1527

1526



Class of Removal  
1.D.

CENTRAL MANUFACTURING DISTRICT INC.  
LOT 99 LOT 100

RANCHO LAGUNA

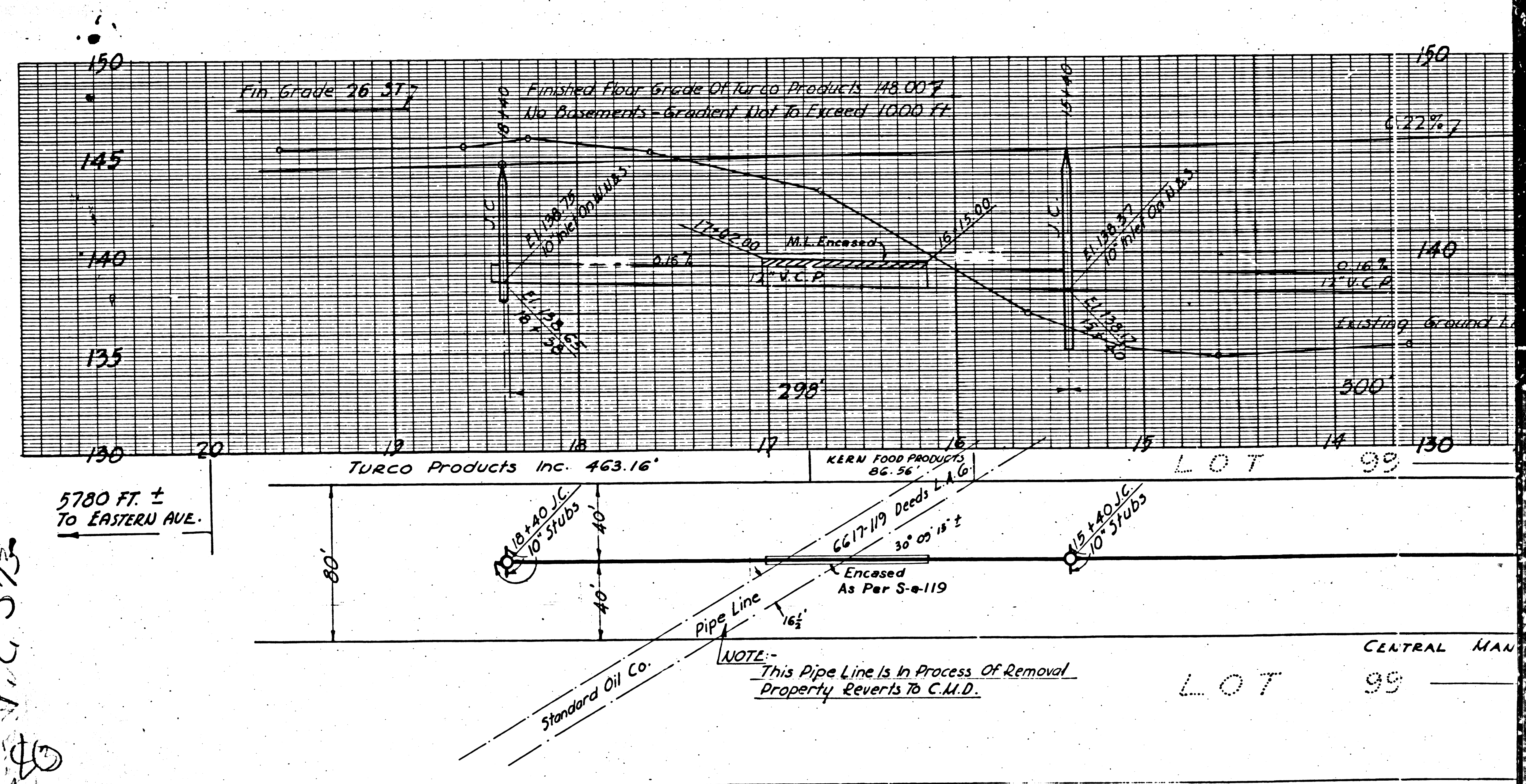
J. B. WINSTON ESTATE 60893'

Trim Line

M4

M6

1527



V.C. 573  
40

5780 FT. ±  
TO EASTERN AVE.

80'

40' ± 40' I.C.  
TO STUDS

40'

30' 05" 15" ±

40' ± 40' I.C.  
TO STUDS

NOTE: This Pipe Line is in Process of Removal  
Property Reverts to C.M.D.

CENTRAL MAN

LOT 99

M3

M3