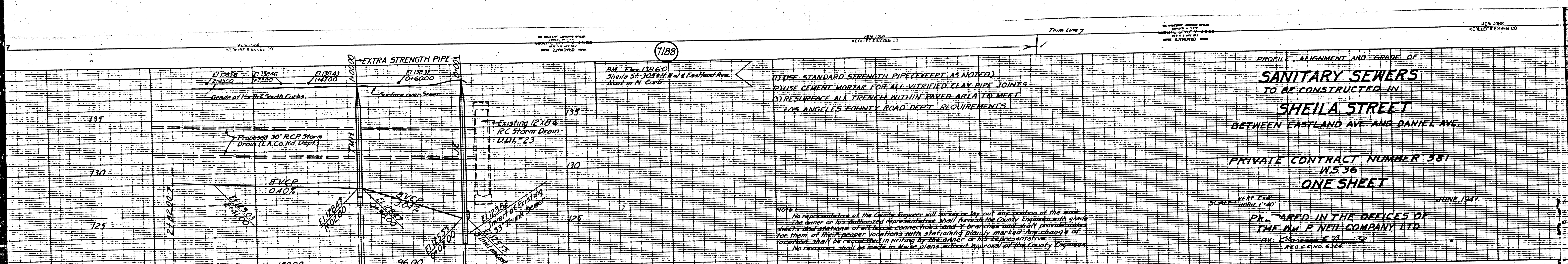


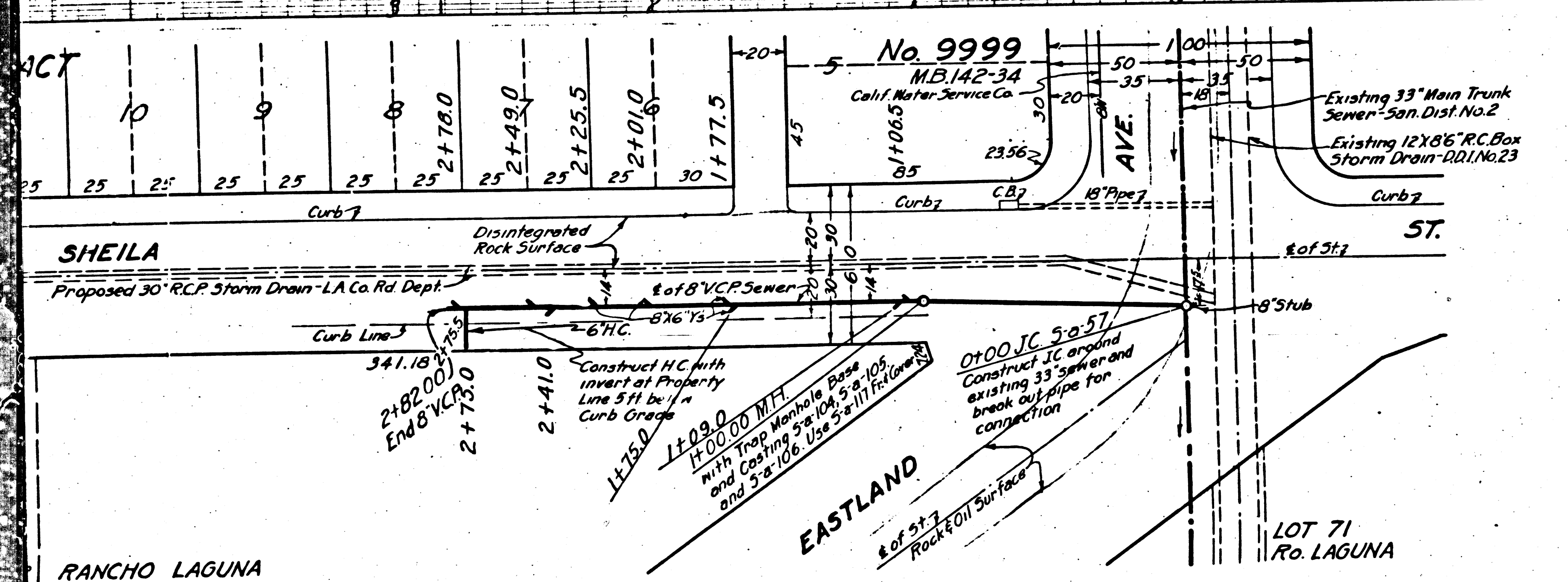
0011



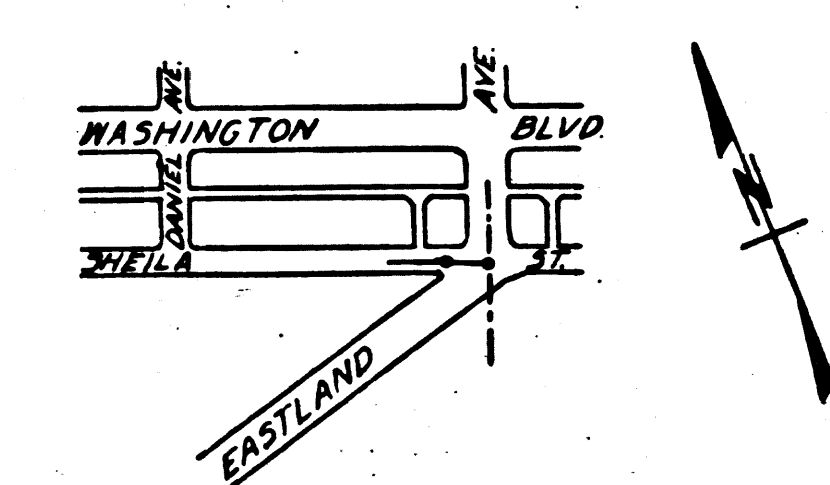
- 1) USE STANDARD STRENGTH PIPE (EXCEPT AS NOTED)
- 2) USE CEMENT MORTAR FOR ALL VITRIFIED CLAY PIPE JOINTS
- 3) RESURFACE ALL TRENCH WITHIN PAVED AREA TO MEET LOS ANGELES COUNTY ROAD DEPT. REQUIREMENTS.

NOTE:
 No representative of the County Engineer will accept any portion of the work unless the authorized representative shall furnish the County Engineer with grade sheets and elevations of all house connections and Y-branches and shall provide stakes for them at their proper locations with stationing plainly marked. Any change of location shall be requested in writing by the owner or his representative.
 No excavations shall be made in these plans without approval of the County Engineer.

PROFILE, ALIGNMENT AND GRADE OF
SANITARY SEWERS
 TO BE CONSTRUCTED IN
SHEILA STREET
 BETWEEN EASTLAND AVE AND DANIEL AVE.
 PRIVATE CONTRACT NUMBER 581
 W.S. 36
ONE SHEET
 SCALE: VERT. 1" = 4'
 HORIZ. 1" = 40'
 JUNE, 1947
 DRAWN IN THE OFFICES OF
THE W. P. NEIL COMPANY, LTD.
 CIVIL ENGINEERS
 1201 WEST 10TH ST.
 LOS ANGELES, CALIF.



INDEX MAP
 P.C. No. 581



FOR LEGEND
 SEE PLAN NO. 5-4-64

NOTE:
 GRADES TO WHICH THIS IMPROVEMENT IS TO BE CONSTRUCTED ARE SHOWN ON PLAN AND PROFILE. GRADE POINTS FOR TOP OF CURBS ARE SHOWN BY CIRCLES ON PROFILE. AT ALL POINTS BETWEEN DESIGNATED POINTS THE GRADE SHALL BE ESTABLISHED SO AS TO CONFORM TO A STRAIGHT LINE DRAWN BETWEEN SAID DESIGNATED POINTS.
 ELEVATIONS ARE IN FEET ABOVE U.S.G.S. DATUM OR MEAN SEA LEVEL.
 THIS DRAWING AND THE DATA HEREON ARE HEREBY MADE A PART OF THE SPECIFICATIONS. WORK SHALL BE CONSTRUCTED ACCORDING TO SPECIFICATIONS ON FILE IN THE OFFICE OF THE COUNTY ENGINEER AND SHALL BE PROSECUTED ONLY IN THE PRESENCE OF THE COUNTY ENGINEER.
 BEFORE WORK CAN BE STARTED, THE CONTRACTOR MUST OBTAIN A PERMIT TO EXCAVATE IN COUNTY STREETS FROM THE L.A. COUNTY ROAD DEPT., 1104 HALL OF RECORDS, AND MAKE A DEPOSIT WITH THE COUNTY ENGINEER, 700 FASHION LEAGUE BUILDING, SUFFICIENT TO COVER THE COST OF CONSTRUCTION INSPECTION AND RECORD PLANS.

COUNTY OF LOS ANGELES, CALIFORNIA

APPROVED: *W. P. Neil* COUNTY ENGINEER
 Deputy
 APPROVED: *W. P. Neil* CHIEF ENGINEER OF COUNTY SANITATION DISTRICT NO. 1
 CHECKED BY: *W. P. Neil* JUNE 13, 1947
 OFFICE OF COUNTY ENGINEER, REG. C.E. NO. 4622

Final C.E.T.P. 9/19/47

EO

Trim Line