

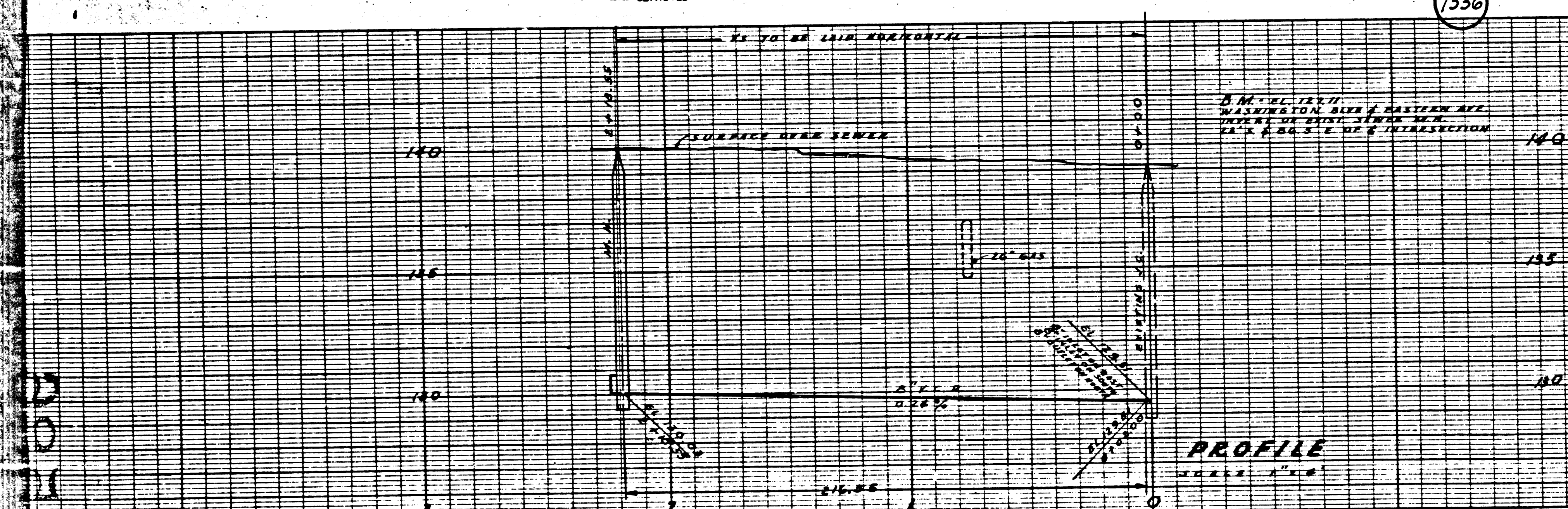
NEW YORK
RETIRED ENGINEER

NEW YORK
RETIRED ENGINEER

NEW YORK
RETIRED ENGINEER

NEW YORK
RETIRED ENGINEER

7336

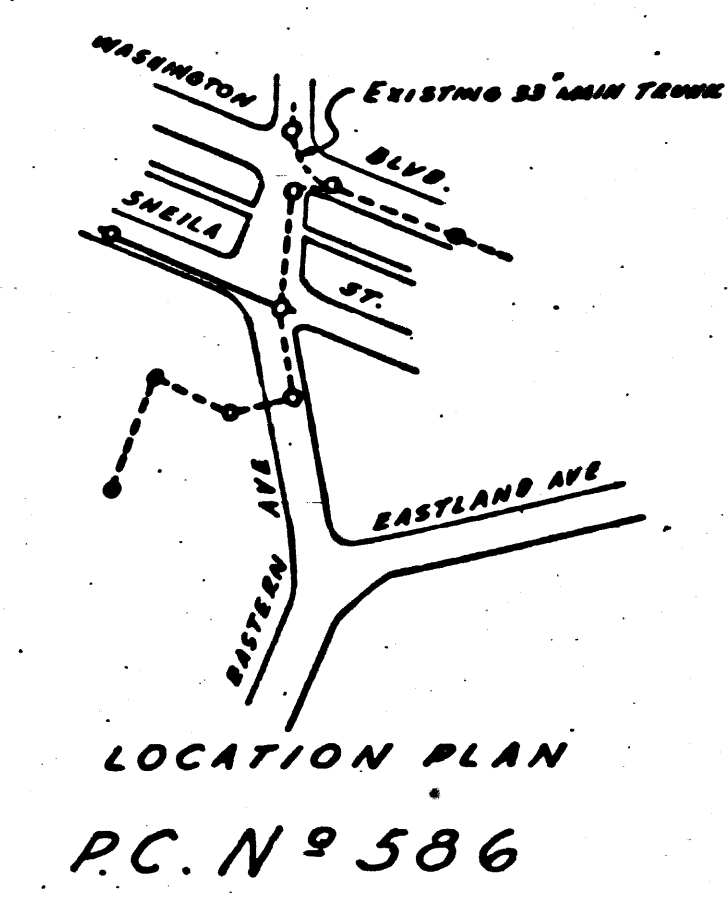
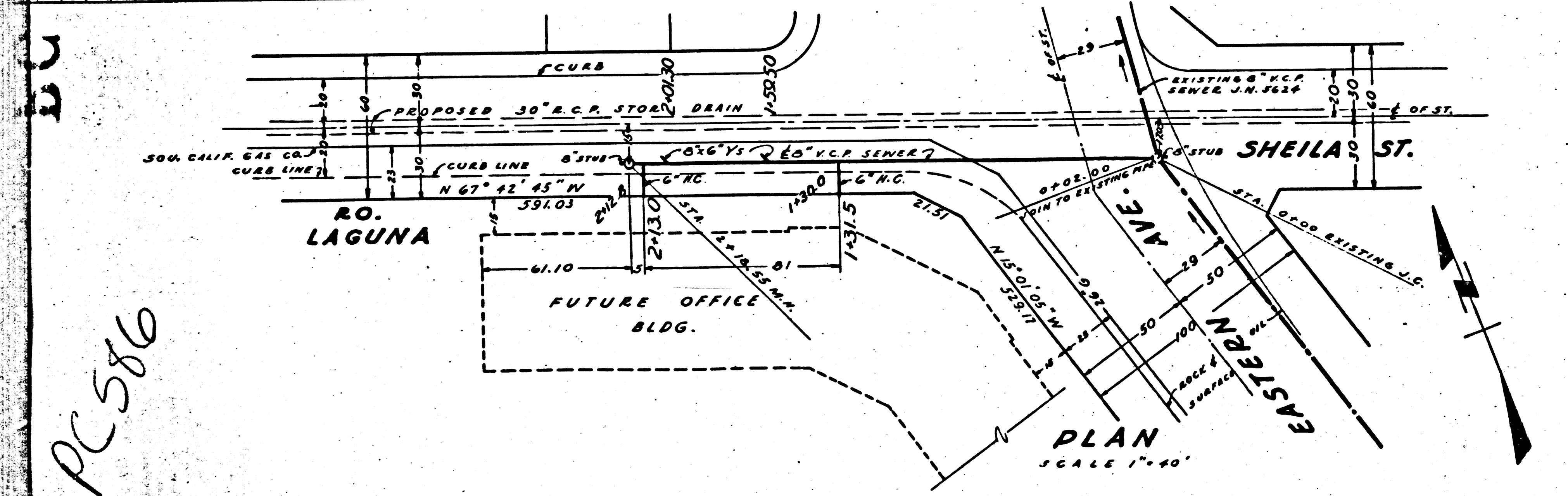


USE STANDARD STEEL PIPE
 USE REINFORCED CONCRETE MANHOLES
 WITH 12\"/>

NO REVISIONS SHALL BE MADE IN THESE PLANS WITHOUT APPROVAL
 OF THE COUNTY ENGINEER. THE COUNTY ENGINEER WILL NOT BE RESPONSIBLE
 FOR THE ACCURACY OF THE DATA FURNISHED BY THE OWNER OR HIS REPRESENTATIVE.
 THE OWNER OR HIS REPRESENTATIVE SHALL FURNISH THE COUNTY ENGINEER WITH
 ALL NECESSARY DATA AND INFORMATION IN WRITING BY THE OWNER OR HIS REPRESENTATIVE.

PROFILE ALIGNMENT AND GRADE OF
SANITARY SEWERS
 TO BE CONSTRUCTED IN
SHEILA ST.
 WEST OF EASTERN AVE.

PRIVATE CONTRACT NO. 506
 W.S. 36
 ONE SHEET
 SCALE: VERTICAL 1"=10'
 HORIZONTAL 1"=40'
 JULY, 1961
 PREPARED IN THE OFFICES OF
W. P. NEIL COMPANY, LTD.
 CIVIL ENGINEERS
 480 S. G. ST. NO. 6343
 FOR LEGEND
 SEE PLAN NO. S-2-66



NOTE:
 GRADES TO WHICH THIS IMPROVEMENT IS TO BE CONSTRUCTED ARE SHOWN ON PLANS AND
 PROFILE. AT ALL POINTS BETWEEN DESIGNATED POINTS THE GRADE SHALL BE ESTABLISHED SO AS TO
 CONFORM TO A STRAIGHT LINE DRAWN BETWEEN SAID DESIGNATED POINTS.
 ELEVATIONS ARE IN FEET ABOVE U.S.C. & G.S. DATUM OR MEAN SEA LEVEL.
 THIS DRAWING AND THE DATA HEREON ARE HEREBY MADE PART OF THE SPECIFICATIONS.
 WORK SHALL BE CONSTRUCTED ACCORDING TO SPECIFICATIONS ON FILE IN THE OFFICE OF
 THE COUNTY ENGINEER AND SHALL BE PROSECUTED ONLY IN THE PRESENCE OF THE COUNTY ENGINEER.
 BEFORE WORK CAN BE STARTED, THE CONTRACTOR MUST OBTAIN A PERMIT TO EXCAVATE IN
 COUNTY STREETS FROM THE L.C. COUNTY CLERK, 1000 HALL OF RECORDS, AND MAKE A DEPOSIT
 WITH THE COUNTY ENGINEER, 100 FASHION LEASUE BUILDING, SUFFICIENT TO COVER THE COST OF
 CONSTRUCTION INSPECTION AND RECORD PLANS.

FOR REFERENCE DRAW SEE PRIVATE CONTRACT NO. 503
 W.S. 36 ONE SHEET

COUNTY OF LOS ANGELES, CALIFORNIA

Approved for the collection of liquid industrial waste.
 Connection permits must be obtained from the County Engineer.
 Approved: *Alfred Jones* COUNTY ENGINEER
 Approved: *Alfred Jones* COUNTY ENGINEER
 Checked by: *Charles E. [Signature]* CHIEF ENGINEER OF COUNTY SANITATION DISTRICT NO. 2

Final C.T.I.P. 4/10/67

PC 586