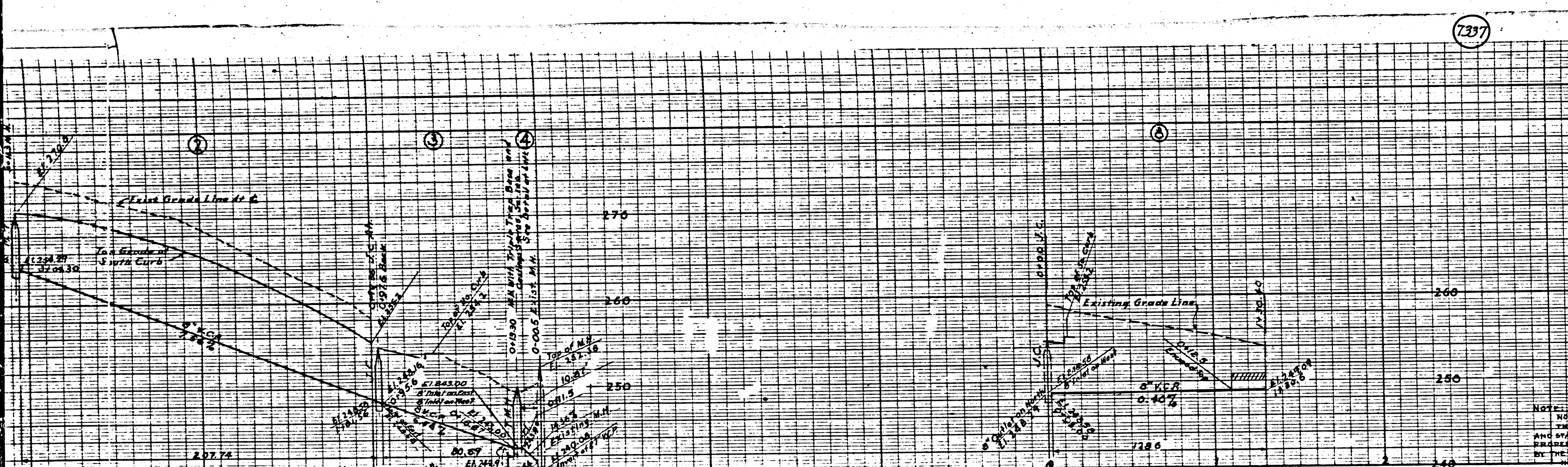


7397



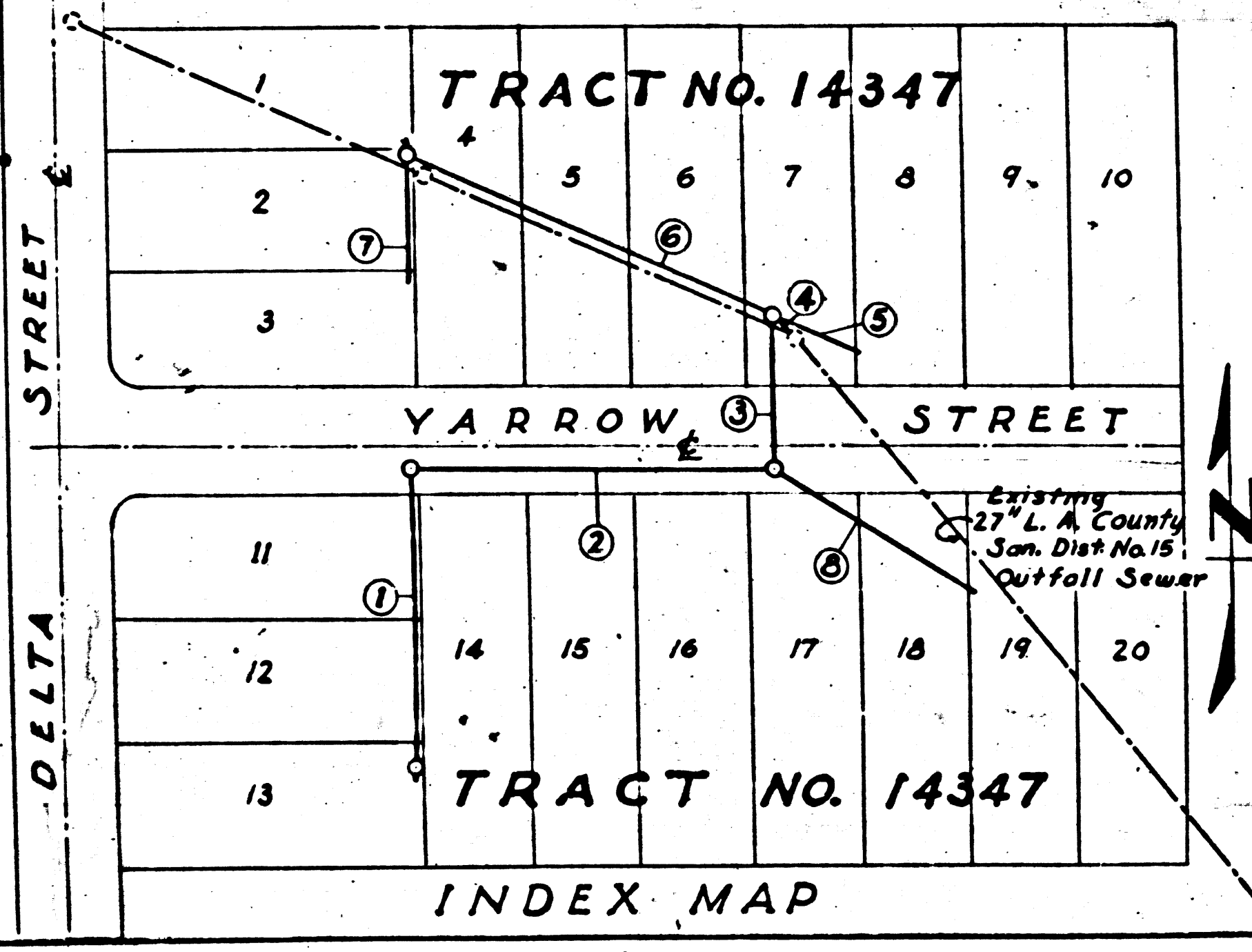
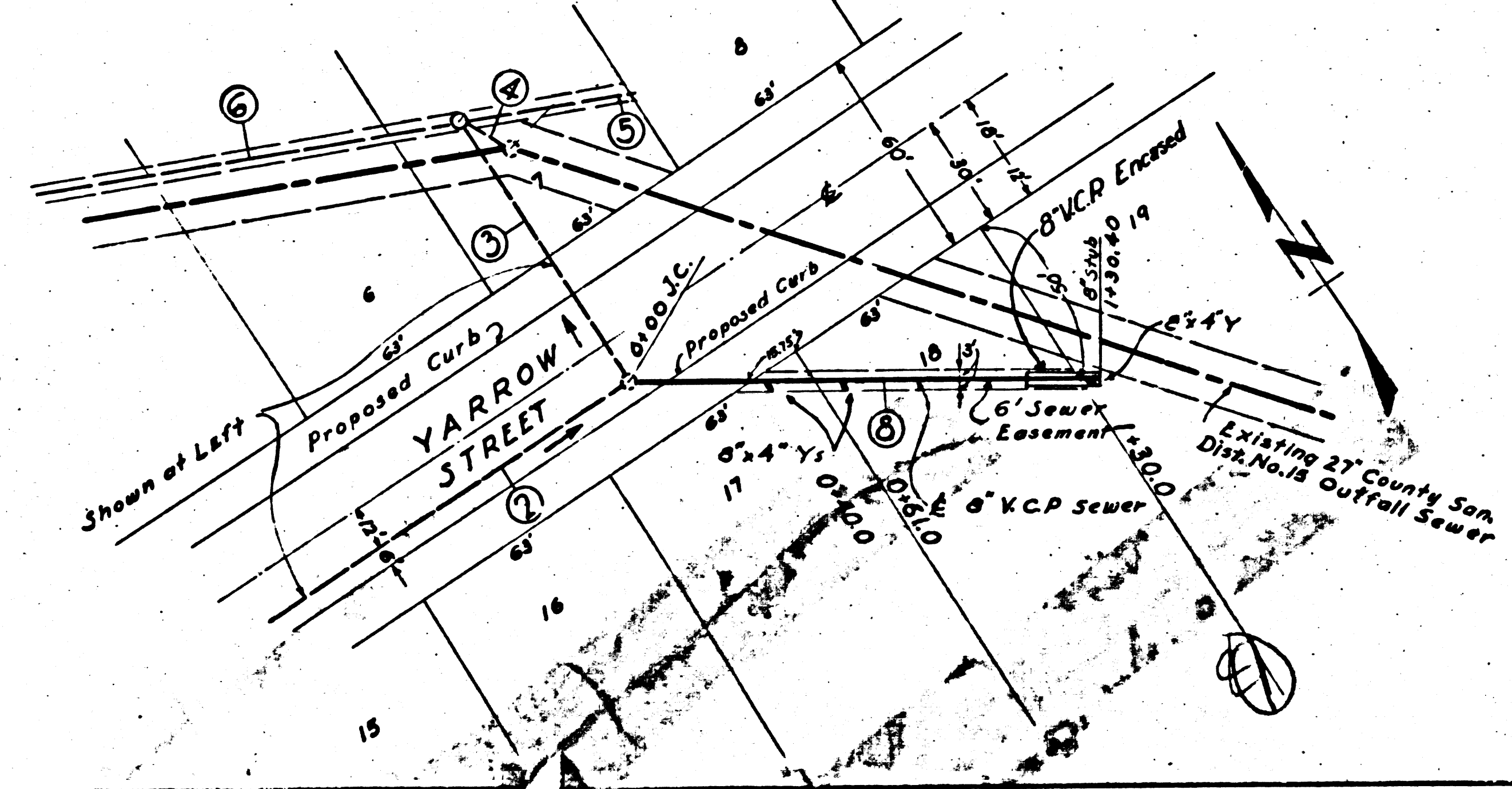
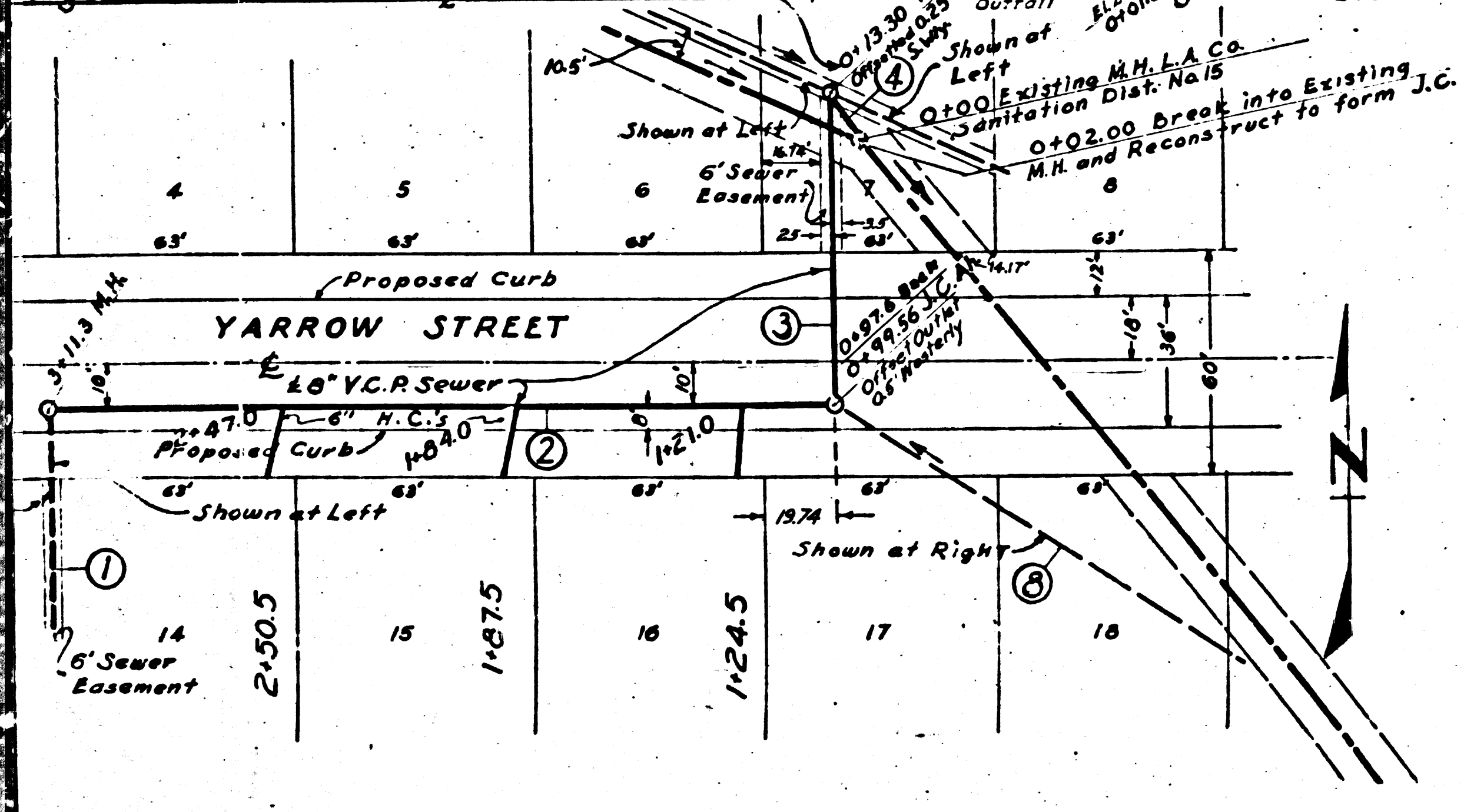
- DOUBLE SCALE**
- (1) USE STANDARD MANHOLE FRAME AND COVER, S-2-117
  - (2) USE STANDARD STRENGTH PIPE (EXCEPT AS NOTED)
  - (3) USE CEMENT MORTAR FOR ALL VITRIFIED CLAY PIPE JOINTS
  - (4) CONSTRUCT HOUSE CONNECTIONS WITH INVERT AT PROPERTY LINE (5) FEET BELOW CURB GRADE
  - (5) ALL STRUCTURES SHALL BE BRICK SEWER STRUCTURES, S-2-194
  - (6) CONSTRUCT TOPS OF ALL STRUCTURES IN RIGHTS OF WAY 6" ABOVE FINISHED GRADES

PROFILE, ALIGNMENT AND ELEVATION  
**SANITARY SEWER**  
 TO BE CONSTRUCTED  
**YARROW STREET**  
**SANITARY SEWER RIG**  
 IN TRACT NO. 14347, M.B.

PRIVATE CONTRACT NO. 596  
 W.S. 7  
 ONE SHEET

NOTE: NO REPRESENTATIVE OF THE COUNTY ENGINEER WILL SURVEY OR LAYOUT ANY PORTION OF THE WORK. THE OWNER SHALL BE RESPONSIBLE FOR THE ACCURACY OF ALL DATA AND SHALL PROVIDE STAKES FOR THEM AT THEIR PROPER LOCATIONS. MARKS SETTING BLINDLY MARKED ANY CHANGE IN LOCATION SHALL BE REQUESTED IMMEDIATELY BY THE OWNER OR HIS REPRESENTATIVE.

PREPARED IN THE OFFICE OF  
**J.M. MONTGOMERY, INC. ENGINEERS**  
 BY: *Glenn C. ...*  
 REG. C.E. NO. 8286



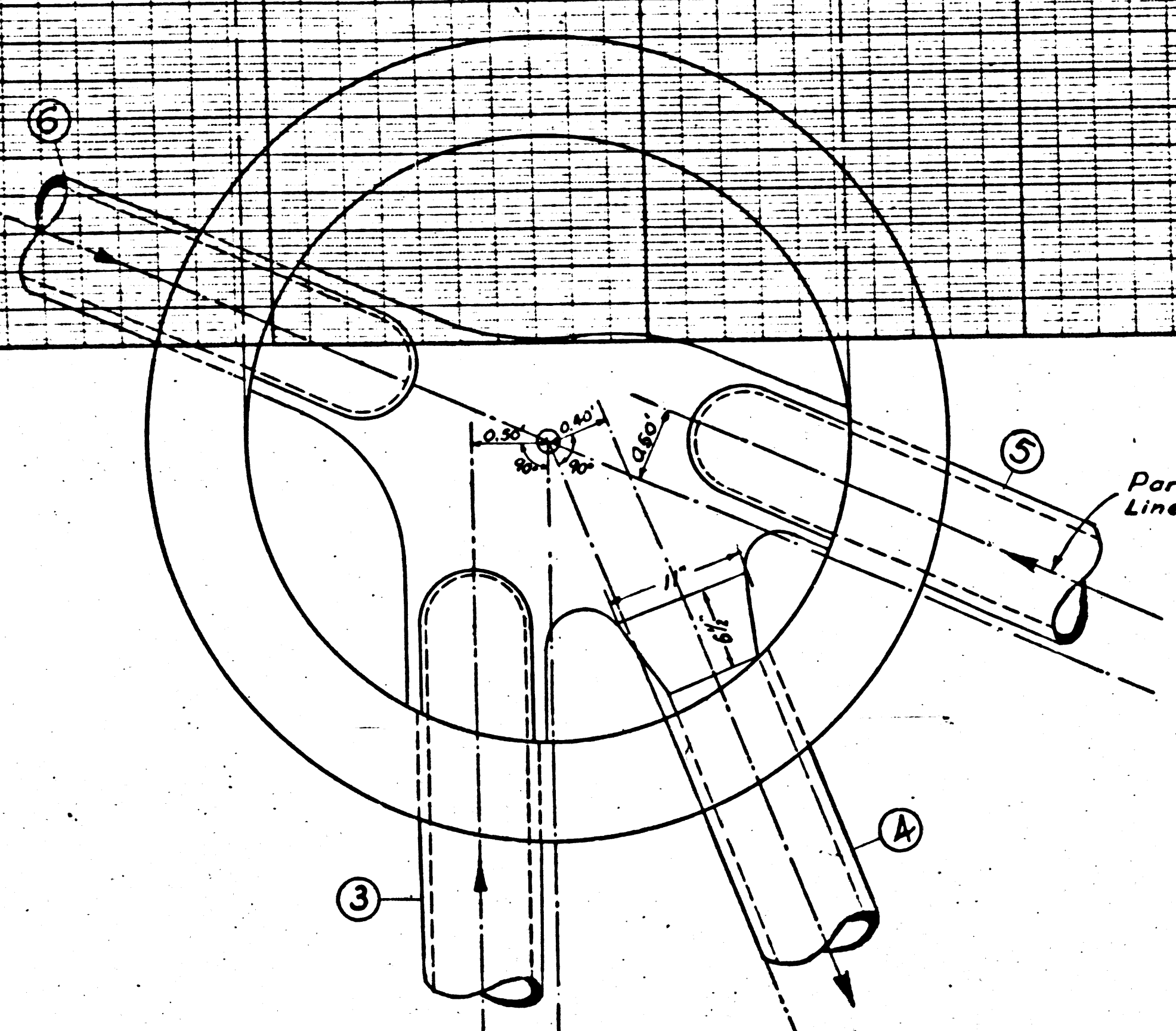
NOTE: GRADES TO WHICH THIS IMPROVEMENT IS TO BE CONSTRUCTED ARE SHOWN ON PLANS AND PROFILES. GRADE POINTS FOR TOP OF CURB, CENTER LINE OF STREET OR CENTER LINE OF ALLEY ARE SHOWN BY CIRCLES ON PROFILES. AT ALL POINTS BETWEEN DESIGNATED POINTS THE GRADE SHALL BE ESTABLISHED SO AS TO CONFORM TO A STRAIGHT LINE DRAWN BETWEEN SAID DESIGNATED POINTS. ELEVATIONS ARE "FEET ABOVE U.S.C. & G.S. DATUM OR MEAN SEA LEVEL." THIS DRAWING AND THE DATA HEREON ARE HEREBY MADE A PART OF THE SPECIFICATIONS. WORK SHALL BE CONSTRUCTED ACCORDING TO THE SPECIFICATIONS BEING IN THE OFFICE OF THE COUNTY ENGINEER AND SHALL BE PRESENTED ONLY IN THE PRESENCE OF THE COUNTY ENGINEER. BEFORE WORK CAN BE STARTED, THE CONTRACTOR MUST OBTAIN A PERMIT TO EXCAVATE FROM THE COUNTY ENGINEER, DO PAVEMENT LEAVE BUILDING, SUFFICIENT TO COVER THE COST OF EXCAVATING FOR IMPROVEMENT AND REPAIRS. IF WORK IS TO BE DONE IN A STATE HIGHWAY, A PERMIT MUST BE OBTAINED FROM THE DIVISION OF CALIFORNIA, DIVISION OF HIGHWAYS, AND STATE BUILDING AFTER MAKING THE DEPOSIT IN THE COUNTY ENGINEER'S OFFICE. COUNTY OF LOS ANGELES, CALIFORNIA. APPROVED: *Alfred ...*

Final Ck. T.P. 11/10/47

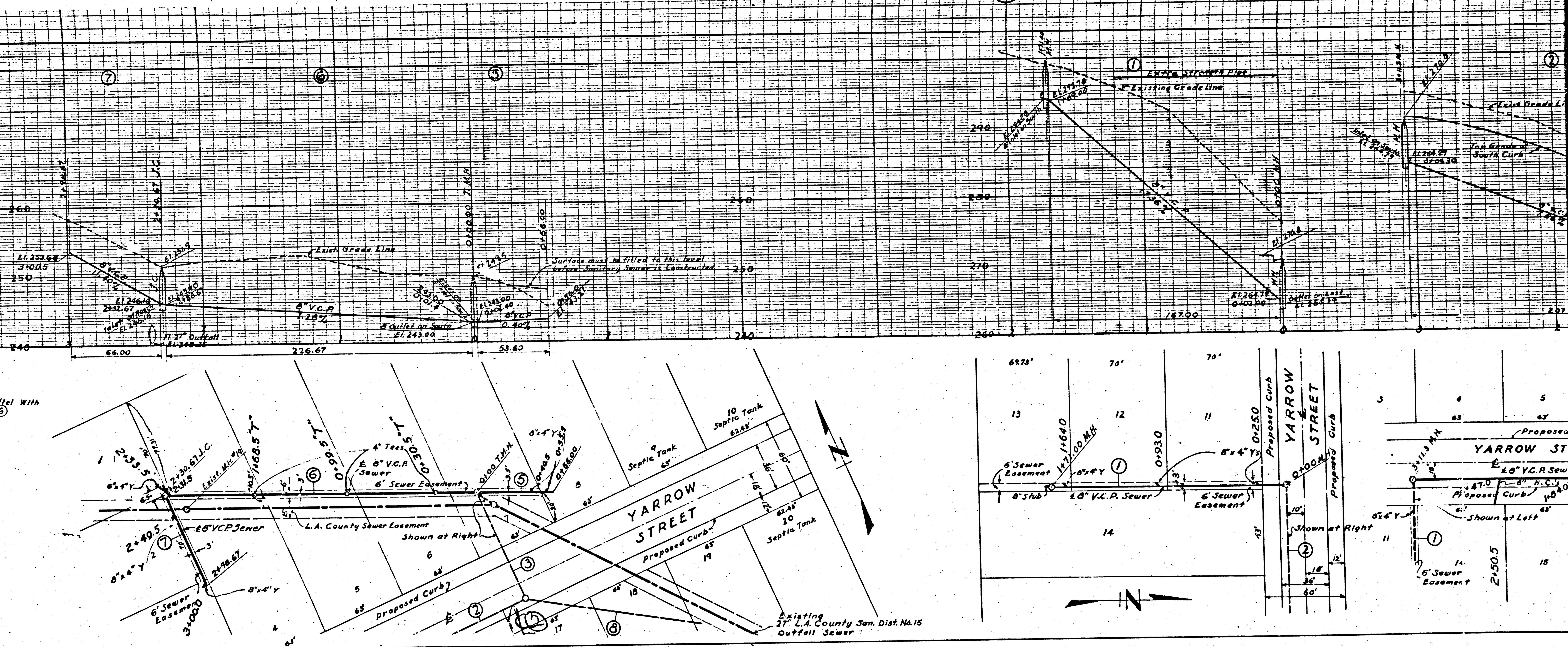
Trim Line

County B.M. 63 Elev. 233.93 Spike in Concrete  
Monument 18" Deep 30" Dia. of 6" Rusty Iron  
and 45" High of 6" Dia. - Street 3rd P. 1252

7338



DETAIL OF TRIPLE TRAP BASE



Trim Line

M5

M5