

7506

Do Not Use
Co. San. Dist. #15 B.M. Elev. 317.61
X on E end of Guard Rail on S
side of Lower Azusa Rd at Baldwin Ave.

To correct Co. San. Dist. #15
B.M. to basis of Elev. For Co. B.M. No 9
add 0.15 ft.

B.M. No 9 Elev. 315.86
L & T 50' Curb Lower Azusa Rd.
100' E. of E. of Baldwin Ave.

1. Use Standard Manhole Frames and Covers, S-4-117
2. Use Standard Strength Pipe
3. Use Cement Mortar for all Vitrified Clay Pipe Joints
4. Resurface all Trench within Paved Area to meet L.A. County Road Dept. requirements
5. House Connections to be Constructed with invert at Property Line 5' Below Curb Grade
6. All Structures to be Brick Sewer Structures, S-4-104

PROFILE ALIGNMENT AND GRADE OF
SANITARY SEWERS
TO BE CONSTRUCTED IN
BIRCHLAND PLACE
BETWEEN LOWER AZUSA ROAD AND 1239 FEET NORTH OF
LOWER AZUSA ROAD

PRIVATE CONTRACT NO. 597
SHEET 1 OF 1 SHEETS
Scale Vert. 1"=4'
Horiz. 1"=40' JULY 1947
PREPARED IN THE OFFICES OF
HAROLD A. BARNETT

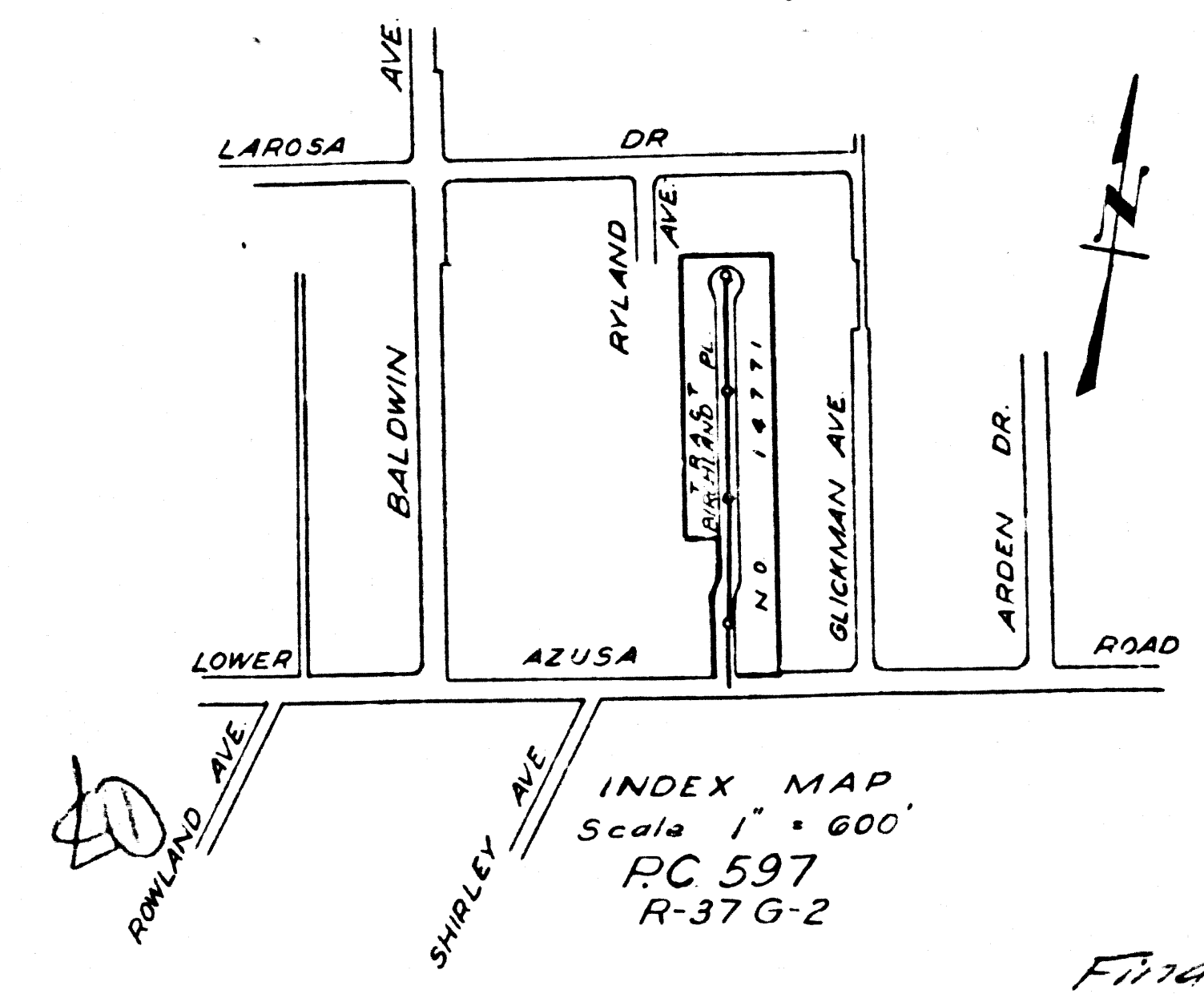
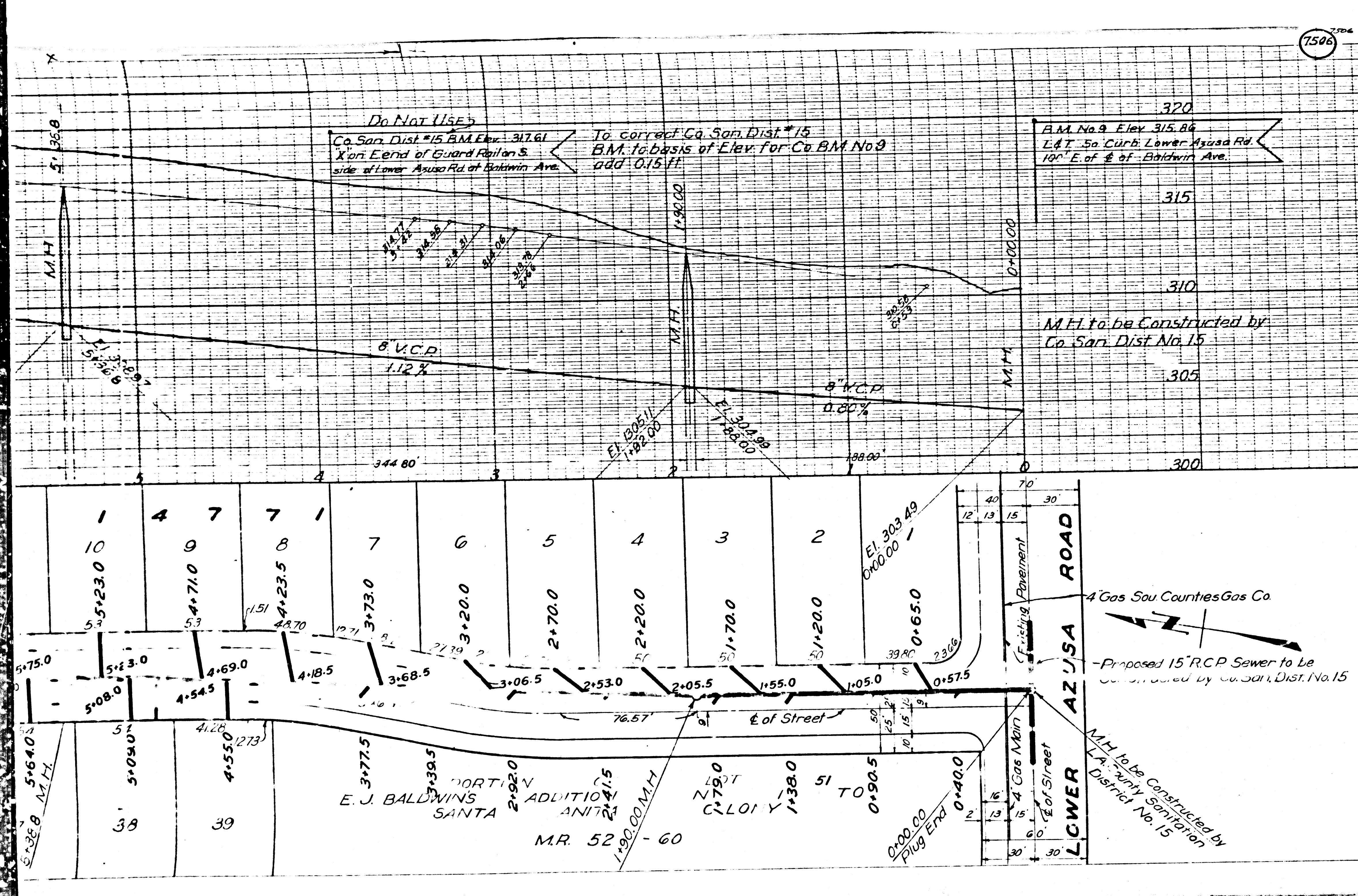
NOTE: No representatives of the County Engineer will survey or lay out any portion of the work. The owner or his authorized representative shall furnish the County Engineer with grade sheets and stations for all house connections and manholes and shall provide stakes for them at their proper locations with stationing plainly marked. Any change of location shall be requested in writing by the owner or his representative. No revisions shall be made in these Plans without approval of the County Engineer.

By **Harold A. Barnett**
R.E. No. 1216

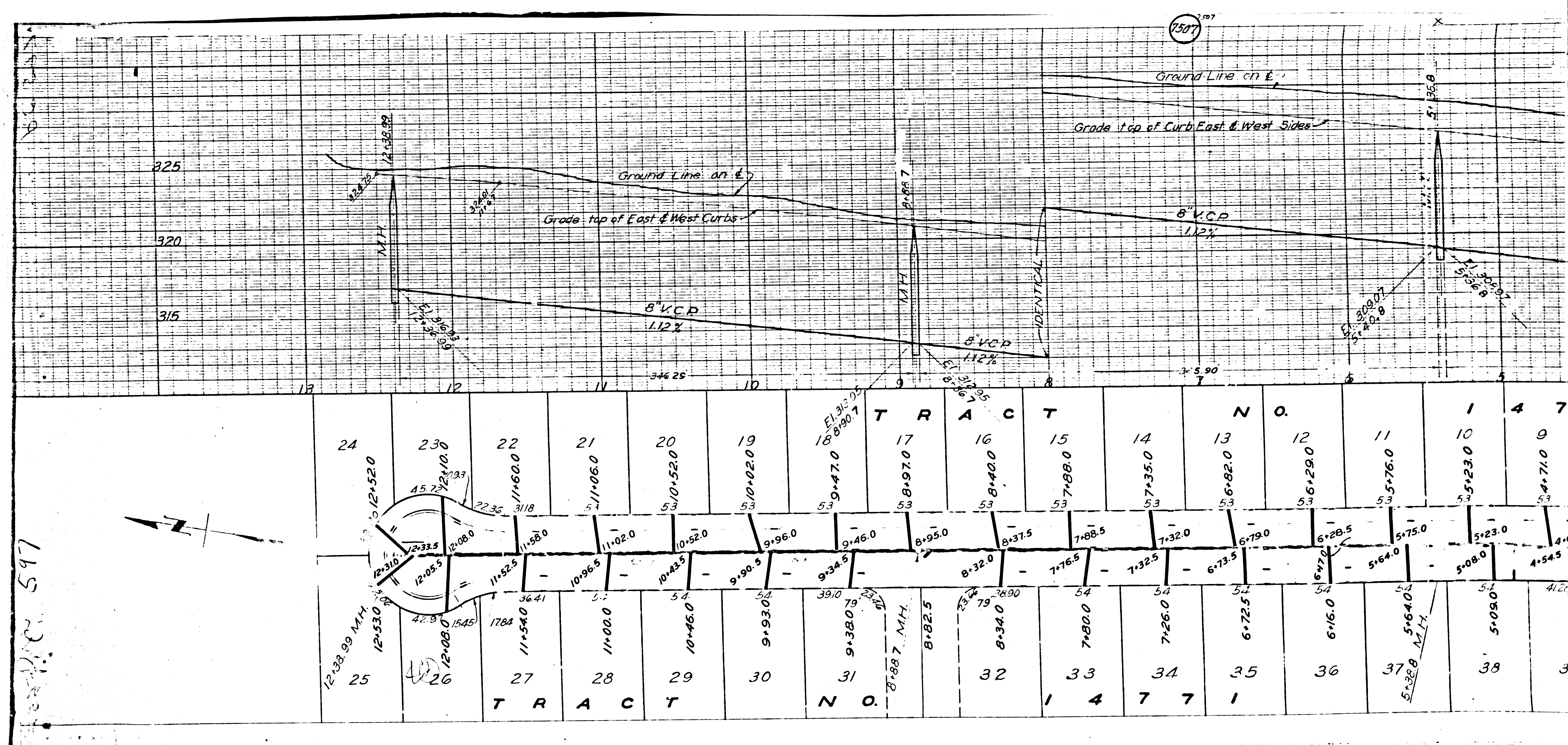
FOR LEGEND
See Plan No. S-4-64

NOTE: Grades to which this improvement is to be constructed are shown on Plans and Profiles. Grade points for top of curb are shown by circles on Profiles. At all points between designated points the grade shall be established so as to conform to a straight line drawn between said designated points. Elevations are in feet above U.S.G.S. Datum or Mean Sea Level. This drawing and the data hereon are hereby made a part of the specifications. The work shall be constructed according to specifications on file in the office of the County Engineer and shall be prosecuted only in the presence of the County Engineer. Before work can be started, the Contractor must obtain a permit to excavate in County streets from the L.A. County Road Dept., 1104 Hall of Records and make a deposit with the County Engineer, 700 Fashion League Building sufficient to cover the cost of Construction Inspection and Record Plans. COUNTY OF LOS ANGELES, CALIFORNIA

APPROVED *Harold A. Barnett*
County Engineer
APPROVED *John B. Kna*
Sanitation District No. 15
CHECKED *John B. Kna* Sept. 30 1947
Office of County Engineer, R.E. No. 612



Final CR 77.P 1/5/48



597