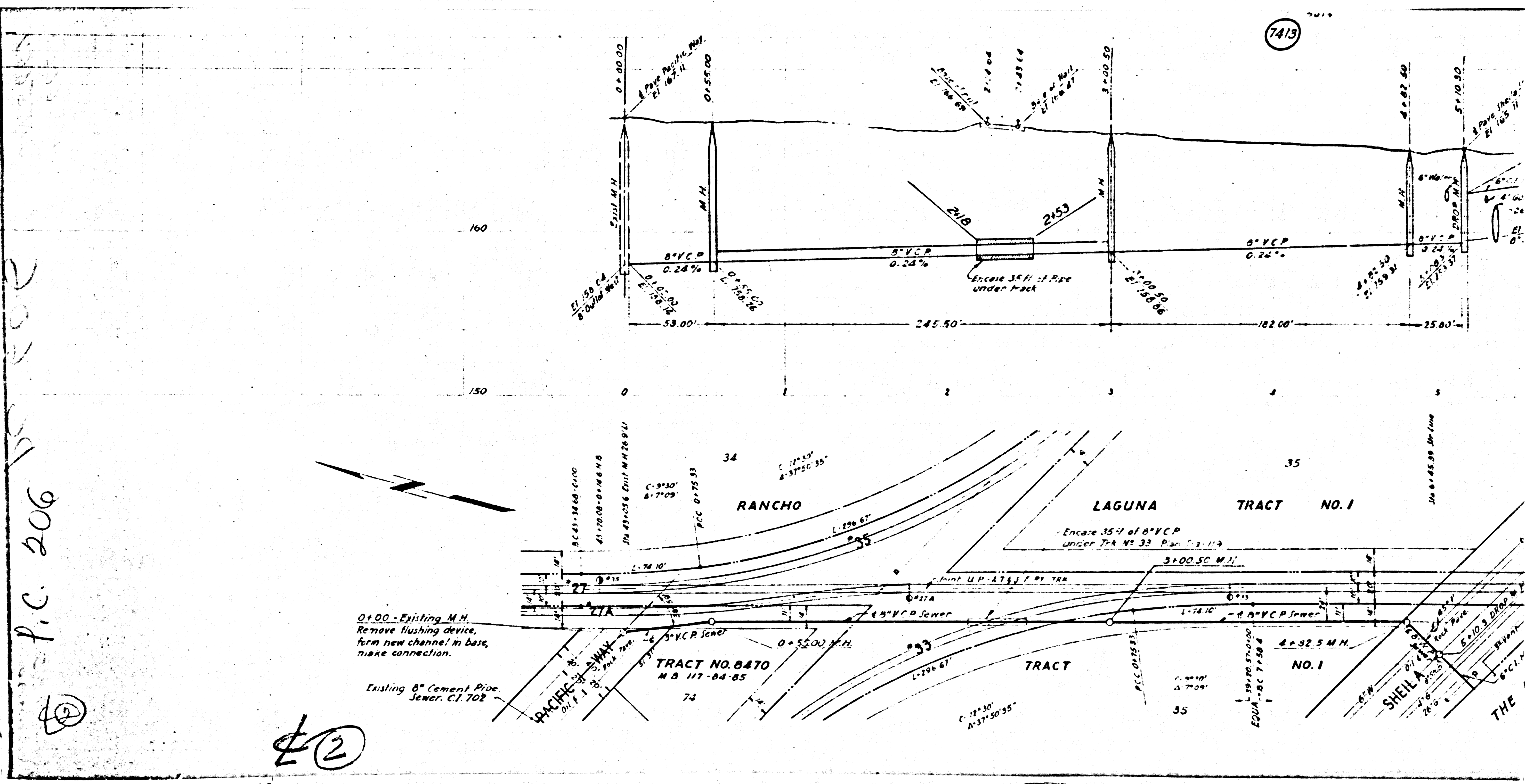


7413



P.C. 206

②

0+00 - Existing M.H.  
Remove flushing device,  
form new channel in base,  
make connection.

Existing 8" Cement Pipe  
Jewer. C.I. 702

TRACT NO. 8470  
M.B. 117-04-85

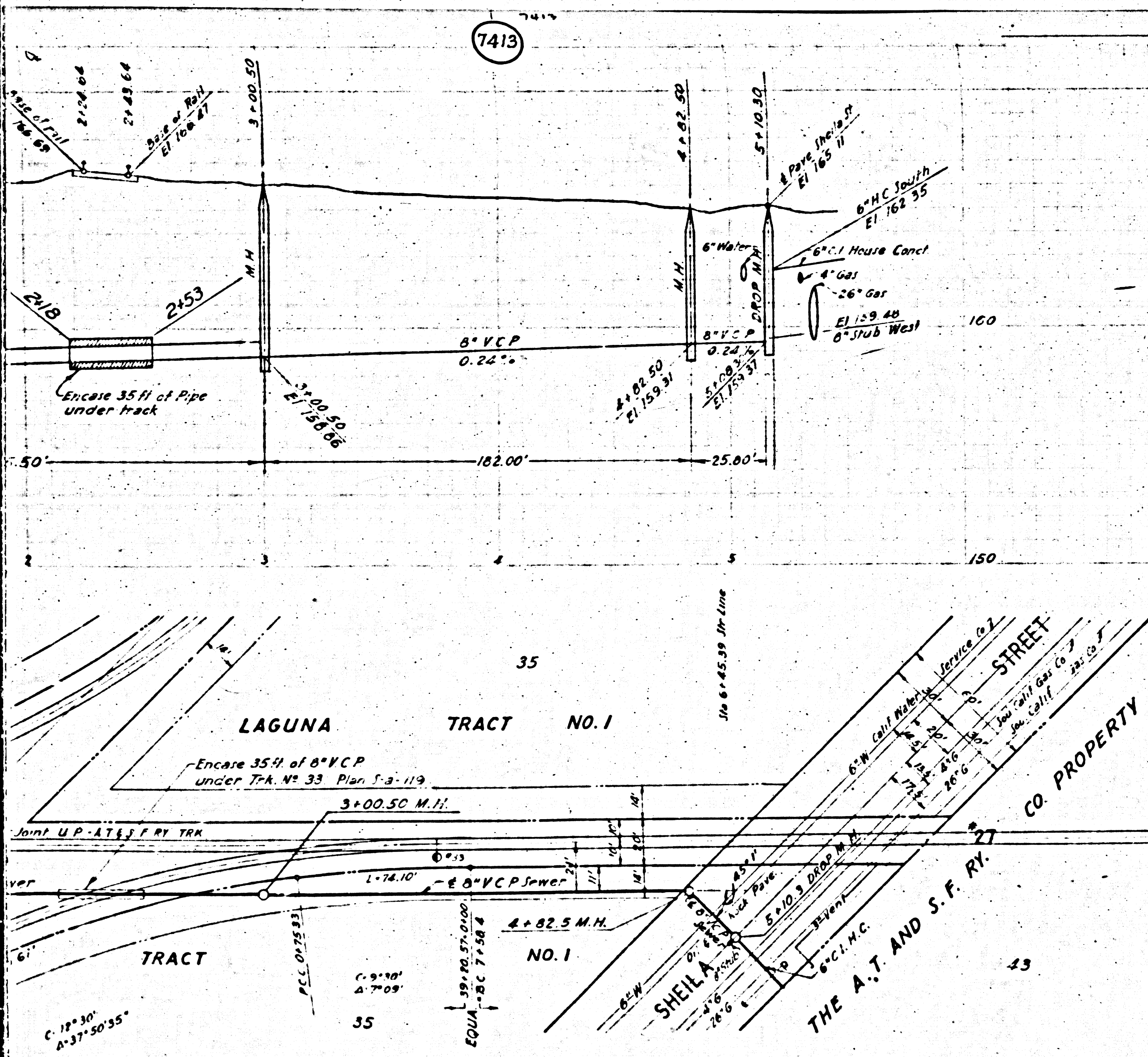
RANCHO

LAGUNA TRACT NO. 1

TRACT NO. 1

SHEILA

THE



- (1) Use Standard Manhole Frames and Covers, S-a-117.
- (2) Use Standard Strength Pipe.
- (3) Use Cement Mortar for all Vitrified Clay Pipe Joints.
- (4) Resurface all trench within paved area to meet Los Angeles County Road Dept. Requirements.
- (5) Encase four feet of sewer at points of interference with poles as per S-a-119.
- (6) All Structures shall be Brick Sewer Structures S-a-104.
- (7) Contractor to notify all existing Utility Companies of intention to excavate.
- (8) Contractor shall deliver all salvage material from existing manhole to the County Maintenance Yard.

NOTE: Grades to which this improvement is to be constructed are shown on plans and profile. Grade points on street center lines and right-of-way are shown by circles on profile. At all points between designated points the grade shall be established to conform to a straight line drawn between said designated points. Elevations are in feet above U.S.G.S. Datum or mean sea level. This drawing and the data hereon are hereby made a part of the specifications. Work shall be constructed according to specifications on file in the Office of the County Engineer, and shall be prosecuted only in the presence of the County Engineer. Before work can be started, the Contractor must obtain a permit to excavate in county streets from the L.A. County Road Dept, 1101 Hall of Records, and make a deposit with the County Engineer, 700 Fashion League Bldg, sufficient to cover cost of construction, inspection and record plans. No representative of the County Engineer will survey or lay out any portion of the work. No revisions shall be made in these plans without the approval of the County Engineer. The owner or his authorized representative shall furnish the County Engineer with grade sheets and stations of all house connections and T branches, and shall provide stakes for them at their proper locations with stationing plainly marked. Any change in location shall be requested in writing by the owner or his representative.

PROFILE ALIGNMENT AND GRADE  
**SANITARY SEWER**  
 TO BE CONSTRUCTED  
 IN 14 FT. EASEMENT OF  
 WESTERLY RIGHT-OF-WAY  
 JOINT U.P.-S.FE RY. TRACK  
 BETWEEN PACIFIC WAY  
 AND  
 SHEILA STREET

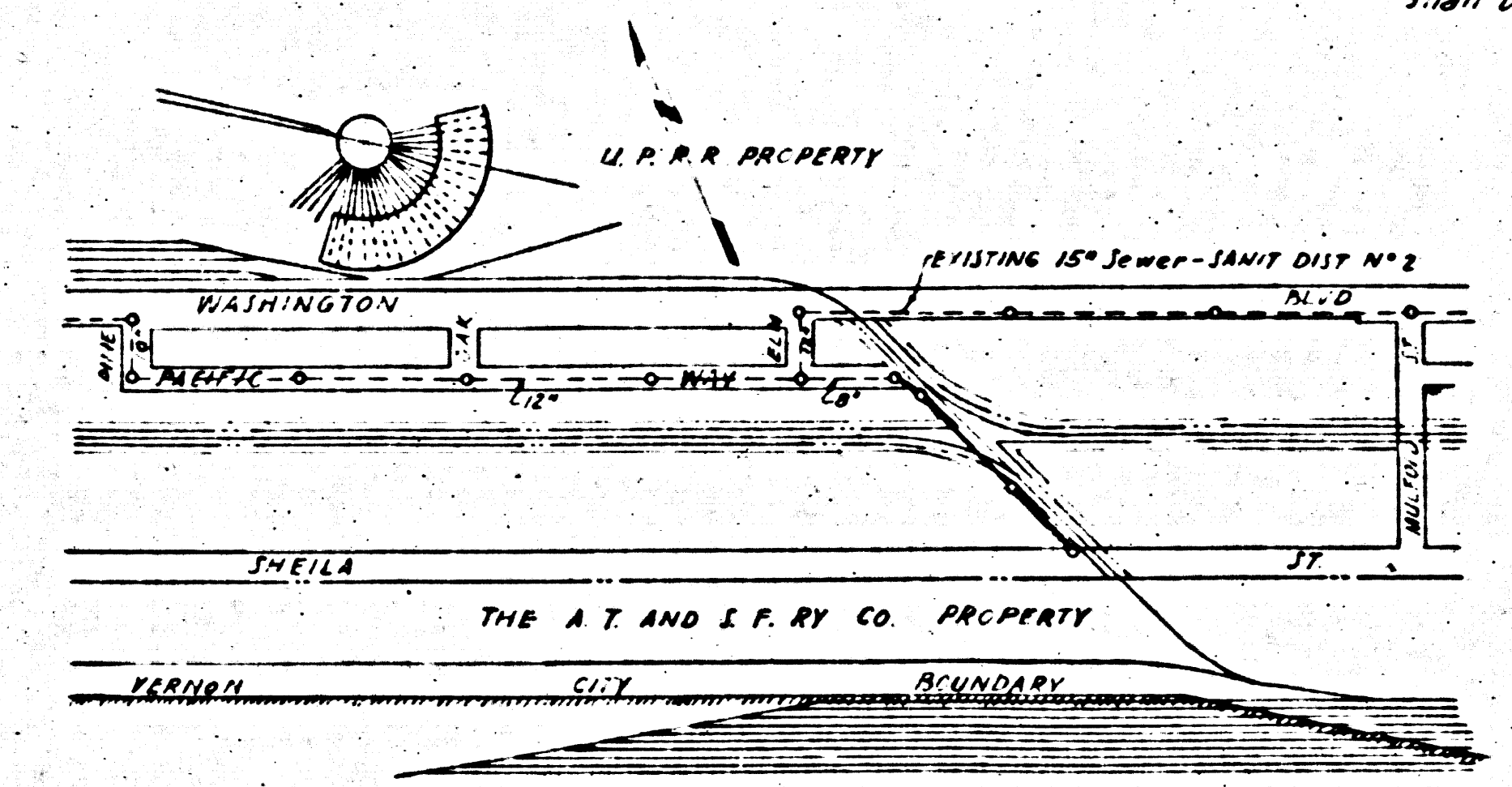
PRIVATE CONTRACT NO. 606  
 SHEET 1 OF 1 SHEET

SCALE: VERT 1"=4'  
 HORIZ 1"=40'

PREPARED IN THE OFFICE OF  
 THE A.T. AND S.F. RY. CO.  
 OFFICE OF THE CHIEF ENGINEER  
 C.E.C.L. 502-25143

BY George L. ...  
 FOR LEGEND  
 SEE PLANS NO. S-3-64  
 COUNTY OF LOS ANGELES, CALIFORNIA  
 APPROVED Alfred Jones  
 COUNTY ENGINEER  
 APPROVED Alfred Jones  
 CHIEF ENGINEER OF COUNTY  
 SANITATION DISTRICT NO. 2  
 CHECKED BY Ed J. ...  
 OFFICE OF COUNTY ENGINEER, REG.

D.M. Elev. 168.04. S.W. Cor. of Conc.  
 Found for Floodlight located  
 240 ft. S.W. of intersection of  
 Trk. 27 and Sheila St.



Final CK TTP 11/20/47