

Station	Elevation	Notes
135	135.00	B.M. - P114 - Elev. 141.52 X in top of W. side of 24" drain conc. water trap - 1000 feet N of Anaheim-Telegraph Road 80 feet E. of E. of Serapis Ave
130	130.00	
125	125.00	

**PROFILE ALIGNMENT AND GRADE OF
SANITARY SEWERS
TO BE CONSTRUCTED IN
CLAYMORE ST.
BETWEEN SERAPIS AVE AND 606 FEET NORTHWEST
SANITARY SEWER RIGHTS OF WAY
FROM CLAYMORE ST TO 816 FEET NORTHEAST
BETWEEN ARBINGTON AVE & CRAVELL AVE
FROM CLAYMORE ST TO 892 FEET NORTHEAST
BETWEEN CRAVELL AVE & SHERIDELL AVE
FROM CLAYMORE ST TO 967 FEET NORTHEAST
BETWEEN SHERIDELL AVE & SERAPIS AVE
IN TRACT NO. 14866**

**PRIVATE CONTRACT NO. 622
W.S. 36**

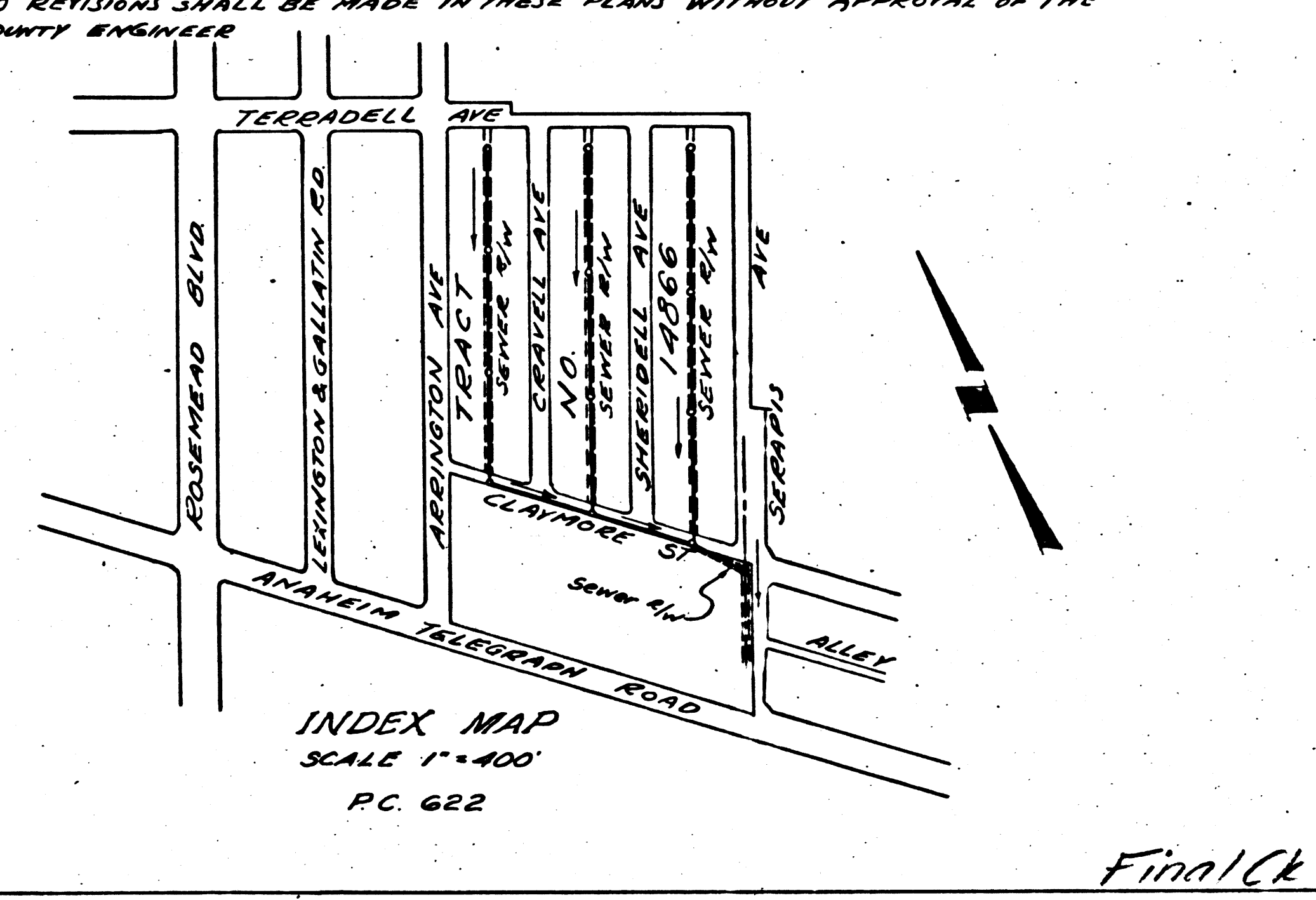
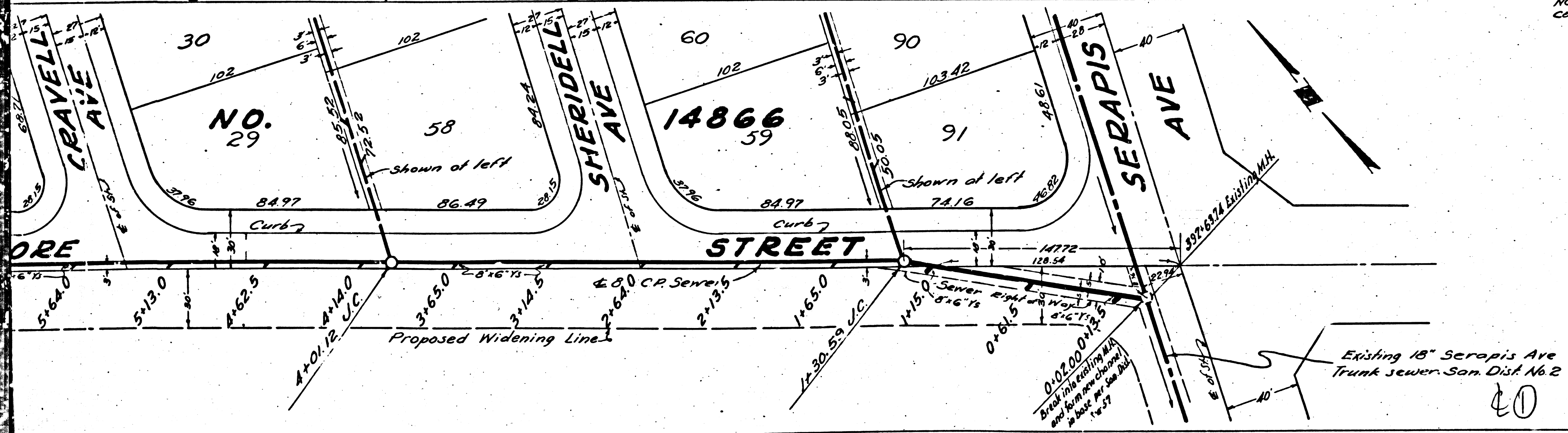
SCALE: HORIZ. 1"=40'
VERT. 1"=4'

**PREPARED IN THE OFFICES OF
HAROLD A. BARNETT**

BY *Harold A. Barnett*
R.R. 621216

FOR LEGEND
SEE PLAN NO. S-3-63

NOTE: GRADES TO WHICH THIS IMPROVEMENT IS TO BE CONSTRUCTED ARE SHOWN ON PLANS AND PROFILE
GRADE POINTS (TOP OF CURB, OR CENTERLINE OF STREET) ARE SHOWN BY CIRCLES OR POINTS
AT ALL POINTS BETWEEN DESIGNATED POINTS THE GRADE SHALL BE ESTABLISHED SO AS TO CONFORM
TO A STRAIGHT LINE DRAWN BETWEEN SAID DESIGNATED POINTS
ELEVATIONS ARE IN FEET ABOVE U.S.C. MEAN SEA LEVEL
THIS DRAWING AND THE DATA HEREON ARE HEREBY MADE A PART OF THE SPECIFICATIONS
WORK SHALL BE CONSTRUCTED ACCORDING TO SPECIFICATIONS ON FILE IN THE OFFICE OF THE COUNTY
ENGINEER AND SHALL BE PROSECUTED ONLY IN THE PRESENCE OF THE COUNTY ENGINEER
BEFORE WORK CAN BE STARTED, THE CONTRACTOR MUST OBTAIN A PERMIT TO EXCAVATE IN
COUNTY STREETS FROM THE L.A. COUNTY ROAD DEPARTMENT, 1004 HALL OF RECORDS, AND HAVE
A DEPOSIT WITH THE COUNTY ENGINEER, 700 FAIRMONT LEASE BUILDING, SUFFICIENT TO COVER THE
COST OF CONSTRUCTION INSPECTION AND RECORD PLANS
IF WORK IS TO BE DONE IN A STATE HIGHWAY A PERMIT MUST BE OBTAINED FROM THE STATE
OF CALIFORNIA, DIVISION OF HIGHWAYS, 808 STATE BUILDING AFTER MAKING THE DEPOSIT WITH THE
COUNTY ENGINEER



NOTE: GRADES TO WHICH THIS IMPROVEMENT IS TO BE CONSTRUCTED ARE SHOWN ON PLANS AND PROFILE
GRADE POINTS (TOP OF CURB, OR CENTERLINE OF STREET) ARE SHOWN BY CIRCLES OR POINTS
AT ALL POINTS BETWEEN DESIGNATED POINTS THE GRADE SHALL BE ESTABLISHED SO AS TO CONFORM
TO A STRAIGHT LINE DRAWN BETWEEN SAID DESIGNATED POINTS
ELEVATIONS ARE IN FEET ABOVE U.S.C. MEAN SEA LEVEL
THIS DRAWING AND THE DATA HEREON ARE HEREBY MADE A PART OF THE SPECIFICATIONS
WORK SHALL BE CONSTRUCTED ACCORDING TO SPECIFICATIONS ON FILE IN THE OFFICE OF THE COUNTY
ENGINEER AND SHALL BE PROSECUTED ONLY IN THE PRESENCE OF THE COUNTY ENGINEER
BEFORE WORK CAN BE STARTED, THE CONTRACTOR MUST OBTAIN A PERMIT TO EXCAVATE IN
COUNTY STREETS FROM THE L.A. COUNTY ROAD DEPARTMENT, 1004 HALL OF RECORDS, AND HAVE
A DEPOSIT WITH THE COUNTY ENGINEER, 700 FAIRMONT LEASE BUILDING, SUFFICIENT TO COVER THE
COST OF CONSTRUCTION INSPECTION AND RECORD PLANS
IF WORK IS TO BE DONE IN A STATE HIGHWAY A PERMIT MUST BE OBTAINED FROM THE STATE
OF CALIFORNIA, DIVISION OF HIGHWAYS, 808 STATE BUILDING AFTER MAKING THE DEPOSIT WITH THE
COUNTY ENGINEER

COUNTY OF LOS ANGELES, CALIFORNIA

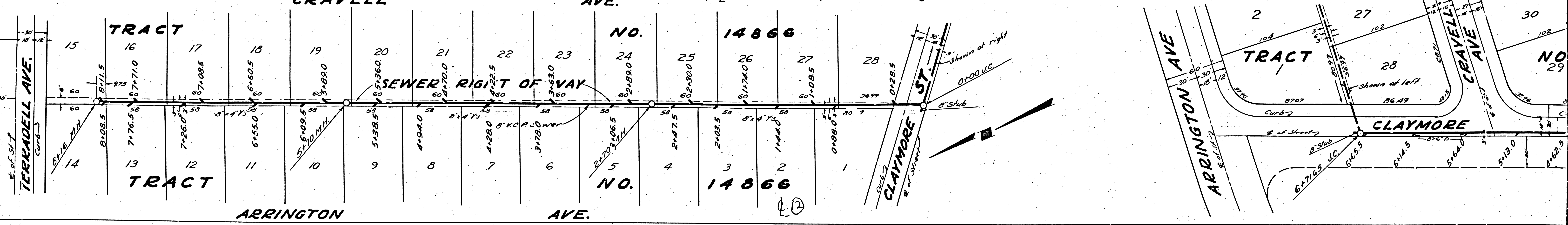
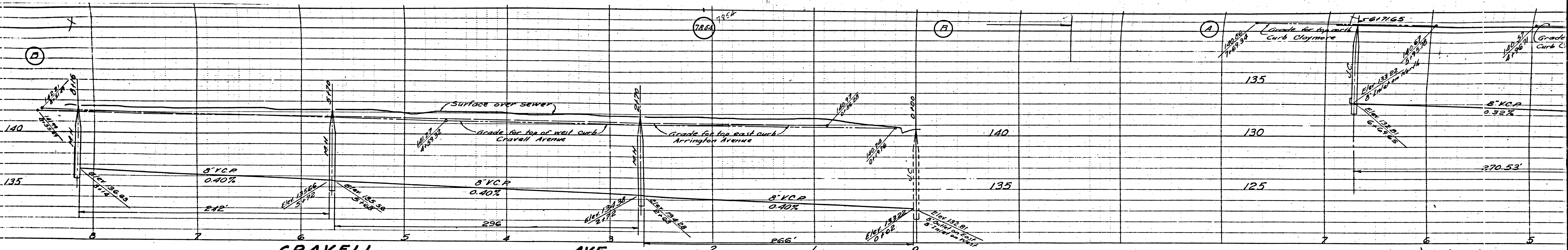
APPROVED: *[Signature]*
COUNTY ENGINEER

APPROVED: *[Signature]*
CHIEF DIVISION OF COUNTY
SANITATION DISTRICT NO. 2

CHECKED BY: *[Signature]*
OFFICE OF COUNTY ENGINEER

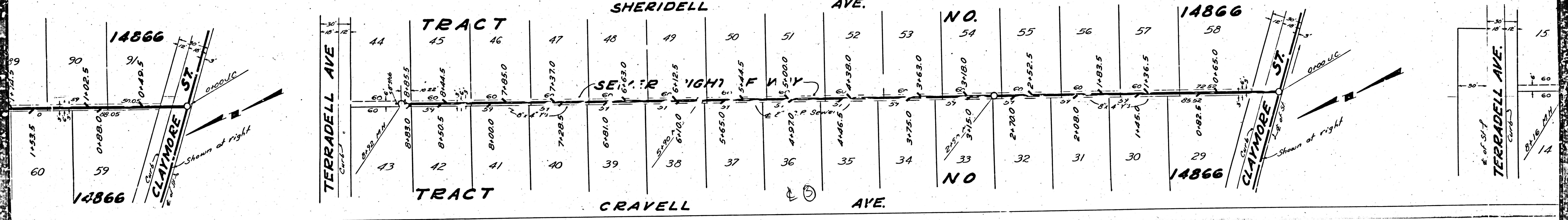
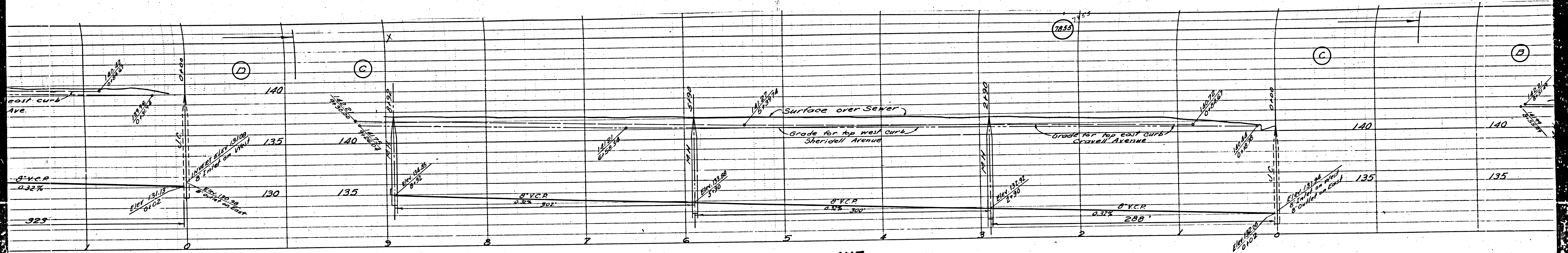
REVISION CHECKED BY: *[Signature]*

FINNICK T.P. 4/19/48



M3

M6



M3

M3

