

B.N. 30, 13, 51, 15, 14, 9  
 Break into Ex. J.C. and  
 Ex. 18' Dancy - Bellflower  
 Tr. Sewer No. 104-B.  
 G.S.P. 176-119 Washington Blvd  
 & Carron Blvd. N.A. Cal.

- (1) Use Standard Manhole Frames and Covers, S.S. 11'
- (2) Use Standard Sintered Pipe (Exception Noted)
- (3) Use Cement Mortar for all Vitrified Clay Pipe Joints
- (4) All Structures shall be Brick Joint Structures, Standard
- (5) Resurface all Trenches with a paved area to meet Los Angeles County Road Dept. Requirements
- (6) Construct a Hatched Catch Basin with inlet on Opposite Side 15' feet below curb grade.

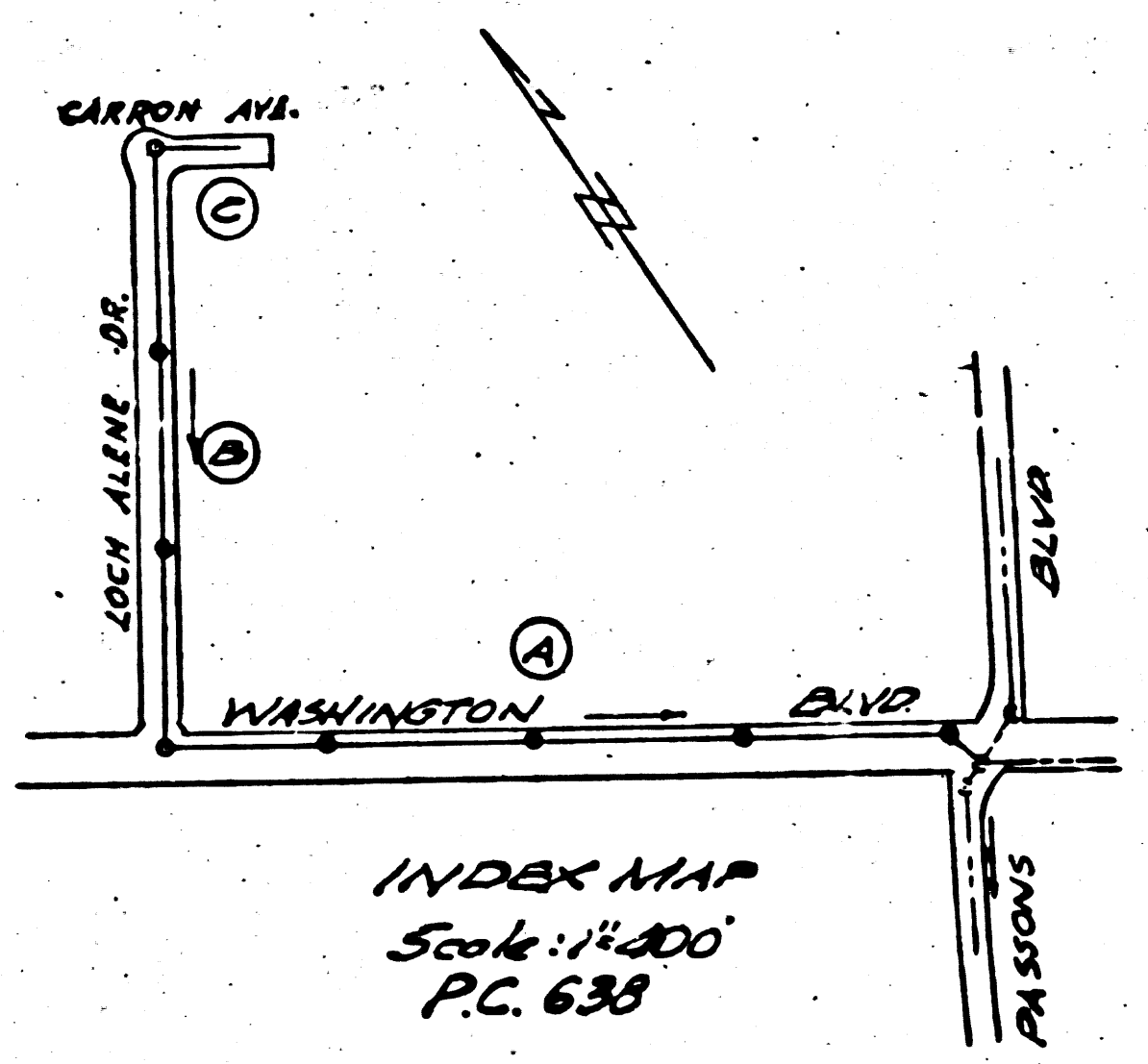
NOTE:  
 THE REPRESENTATIVE OF THE COUNTY ENGINEER WILL SUPPLY THE  
 LATEST EDITION OF THE SPECIFICATIONS FOR THE WORK.  
 THE ENGINEER WILL FURNISH THE NECESSARY DATA AND SPECIFICATIONS FOR THE  
 COUNTY ENGINEER UTILITARIAN SURVEY AND STATIONING. ALL WORK  
 CONNECTIONS AND BEARING AND SHALL PROVIDE EVIDENCE FOR THEM  
 AT THEIR PROPER LOCATIONS WITHIN THE LIMITS OF THE PROJECT. ANY  
 VARIATION OF LOCATION SHALL BE SUBJECT TO THE DISCRETION OF THE  
 COUNTY ENGINEER.  
 NO REVISIONS SHALL BE MADE IN THE DESIGN AND CONSTRUCTION OF THE WORK  
 OF THE COUNTY ENGINEER.

PROFILE ALIGNMENT AND GRADE OF  
**SANITARY SEWERS**  
 TO BE CONSTRUCTED IN  
**WASHINGTON BLVD.**  
 BETWEEN PARSONS BLVD. AND CARRON BLVD.  
**LOCH ALLEN DRIVE**  
 BETWEEN WASHINGTON BLVD. AND CARRON BLVD.  
**CARRON AVENUE**  
 BETWEEN LOCH ALLEN DRIVE AND WASHINGTON BLVD.  
**PRIVATE CONTRACT NO. 638**  
 W.S. 54  
 ONE SHEET

PREPARED IN THE OFFICES OF THE KRAMERER ENGINEERS, CO.  
 SEPT. 1947  
 SCALE: VERTICAL

FOR LEGEND  
 SEE PLAN NO. 5-2-64.  
 NOTE:  
 GRADES TO WHICH THE IMPROVEMENT IS TO BE CONSTRUCTED ARE SHOWN ON PLANS AND PROFILE  
 GRADE POINTS FOR TOP OF CURB, CENTER LINE OF STREET OR CENTER LINE OF ALLEY ARE SHOWN BY  
 CIRCLES ON PARALLELS AT ALL POINTS BETWEEN DEGNATED POINTS THE GRADE SHALL BE ESTABLISHED  
 SO AS TO CONFORM TO A STRAIGHT LINE BETWEEN SAID DESIGNATED POINTS.  
 ELEVATIONS ARE IN FEET ABOVE U.S.C. DATUM OF MEAN SEA LEVEL.  
 THE DESIGNER AND THE STATE ENGINEER ARE HEREBY MADE A PART OF THE SPECIFICATIONS.  
 WORK SHALL BE CONSTRUCTED ACCORDING TO SPECIFICATIONS ON FILE IN THE OFFICE OF THE  
 COUNTY ENGINEER AND SHALL BE PROTECTED ONLY IN THE PRESENCE OF THE COUNTY ENGINEER  
 BEFORE WORK CAN BE STARTED. THE CONTRACTOR MUST OBTAIN A PERMIT TO EXCAVATE IN  
 COUNTY STREETS FROM THE L.A. COUNTY DEPT. OF PUBLIC WORKS AND MAKE  
 DEPOSIT WITH THE COUNTY ENGINEER THE FURNISH LEASE FUNDING, SUFFICIENT TO COVER THE  
 COST OF CONSTRUCTION INSPECTION AND RECORD PLANS.  
 IF WORK IS TO BE DONE IN A STATE HIGHWAY, A PERMIT MUST BE OBTAINED FROM THE STATE OF CALIFORNIA,  
 DIVISION OF HIGHWAYS, 208 STATE BUILDING AFTER MAKING THE DEPOSIT WITH THE COUNTY ENGINEER.

COUNTY OF LOS ANGELES, CALIFORNIA  
 APPROVED *W. J. G. [Signature]*  
 COUNTY ENGINEER  
 APPROVED *[Signature]*  
 CLERK ENGINEER OF COUNTY  
 SECTION DISTRICT NO. 8

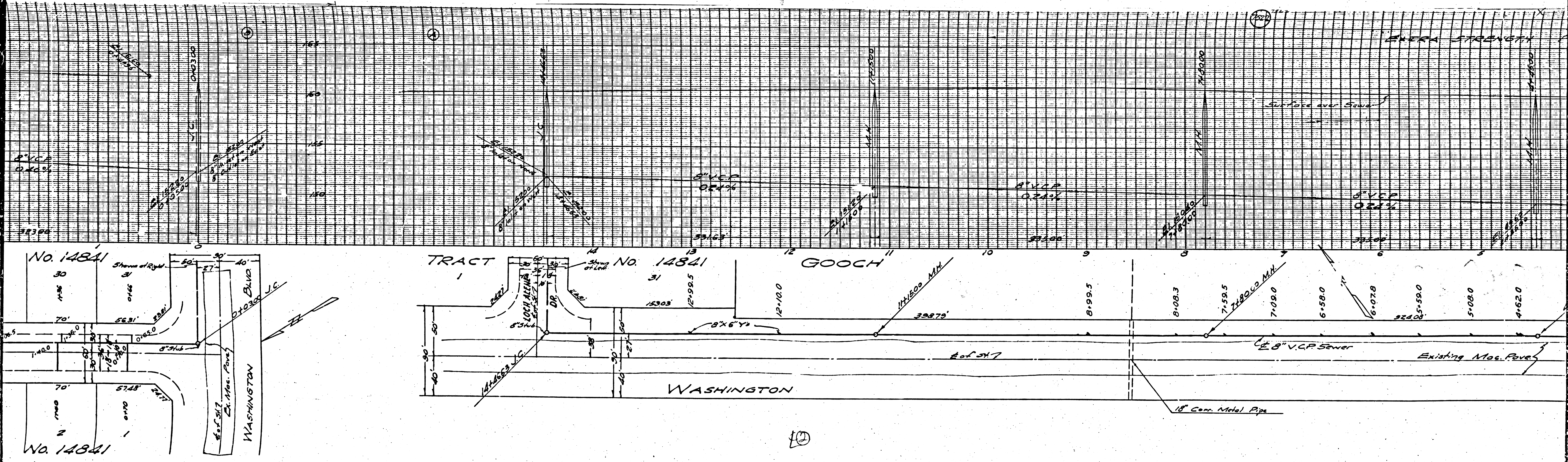


INDEX MAP  
 Scale: 1"=100'  
 P.C. 638

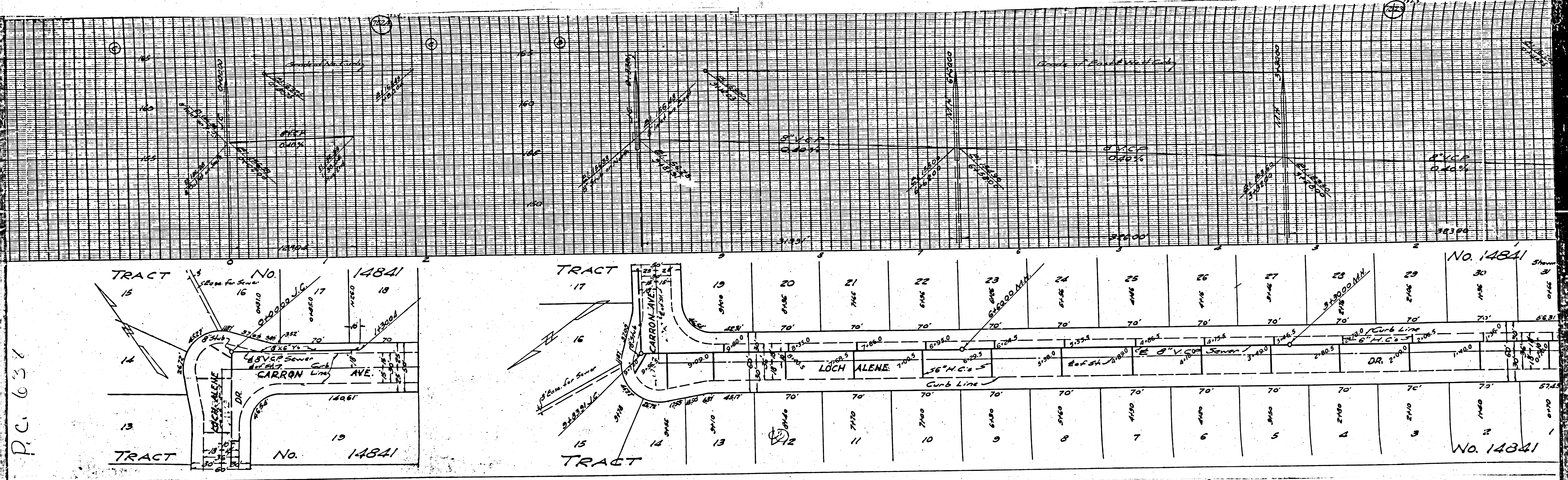
Final C.E. T.P. 1/2/48

CHASE Ex. J.C.  
 Break into Ex. J.C. and  
 Ex. 18' Dancy - Bellflower  
 Tr. Sewer No. 104-B.

CHECKED BY *[Signature]* Oct 17 1947  
 OFFICE OF COUNTY ENGINEER, L.A. (S.M. 532)



P.C. 638



No. 14841

No. 14841