

INDEX MAP
SCALE 1"=200'
P.C. 641

- NOTES:
- (1) USE STANDARD MANHOLE FRAME AND COVER, 8'-6" H.T.
 - (2) USE STANDARD STRENGTH PIPE, EXCEPT AS NOTED.
 - (3) USE CEMENT MORTAR FOR ALL VITRIFIED CLAY PIPE JOINTS.
 - (4) RESURFACE ALL TRENCH WITHIN PAVED AREA TO MEET LOS ANGELES COUNTY ROAD DEPT. REQUIREMENTS.
 - (5) CONSTRUCT HOUSE CONNECTIONS WITH INVERT AT PROPERTY LINE 3 FEET BELOW CURB GRADE, EXCEPT AS NOTED.
 - (6) ENCASE FOUR FEET OF SEWER AT POINTS OF INTERFERENCE WITH POLES AS PER 5'-6-113.
 - (7) ALL STRUCTURES SHALL BE BRICK SEWER STRUCTURES, 3'-0" DIA.
 - (8) CONSTRUCT TOPS OF ALL STRUCTURES IN RIGHTS OF WAY, 6 INCHES ABOVE FINISHED GRADE.

NOTE:
NO REPRESENTATIVE OF THE COUNTY ENGINEER WILL SURVEY OR LAYOUT ANY PORTION OF THE WORK.
THE OWNER OR HIS AUTHORIZED REPRESENTATIVE SHALL FURNISH THE COUNTY ENGINEER WITH GRADE SHEETS AND STATIONS OF ALL HOUSE CONNECTIONS AND V BRANCHES, AND SHALL PROVIDE STAKES FOR THEM AT THEIR PROPER LOCATIONS WITH STATIONING PLAINLY MARKED. ANY CHANGE OF LOCATION SHALL BE REQUESTED IN WRITING BY THE OWNER OR HIS REPRESENTATIVE.
NO REVISIONS SHALL BE MADE IN THESE PLANS WITHOUT APPROVAL OF THE COUNTY ENGINEER.

NOTE:
TO GET ON L.A. CO. SAN. DIST. DATUM, ADD 0.15 FT. TO ALL B.M.'S SHOWN ON THESE PLANS.

①

PROFILE, ALIGNMENT AND GRADE OF
SANITARY SEWERS
TO BE CONSTRUCTED IN
FEER STREET
BETWEEN EL MONTE AVE. AND 384 FT. ELY
PERSIMMON AVENUE
BETWEEN FEER ST. AND 300 FT. N'LY OF DANBURY ST.
SANITARY SEWER RIGHT OF WAY
IN TRACT NO. 13613 - M.B. 308-42,45,44

PRIVATE CONTRACT NO. 641
W. S. 43
SHEET 1 OF 2 SHEETS

VERT. 1"=4'
HORIZ. 1"=40' AUGUST, 1947

PREPARED IN THE OFFICES OF
WALSH AND KLEMA - CIVIL ENGINEERS

BY: *W. S. Klema*
REG. C.E. NO. 6486

FOR CONSTRUCTION NOTES SEE SHEET
FOR LEGEND
SEE PLAN NO. 5-8-64

GRADES TO WHICH THIS IMPROVEMENT IS TO BE CONSTRUCTED ARE SHOWN ON PLANS AND PROFILES. GRADES PERTAIN TO TOP OF CURB, CENTER LINE OF STREET OR CENTERLINE OF ALLEY ARE SHOWN BY CIRCLES ON PROFILES. AT ALL POINTS BETWEEN DESIGNATED POINTS THE GRADE SHALL BE ESTABLISHED SO AS TO CONFORM TO A STRAIGHT LINE DRAWN BETWEEN SAID DESIGNATED POINTS.
ELEVATIONS ARE IN FEET ABOVE U.S.C. & G.S. DATUM OR MEAN SEA LEVEL.
THE DRAWING AND THE DATA HEREON ARE HEREBY MADE A PART OF THE SPECIFICATIONS.
WORK SHALL BE CONSTRUCTED ACCORDING TO SPECIFICATIONS ON FILE IN THE OFFICE OF THE COUNTY ENGINEER AND SHALL BE PROSECUTED ONLY IN THE PRESENCE OF THE COUNTY ENGINEER.
BEFORE WORK CAN BE STARTED, THE CONTRACTOR MUST OBTAIN A PERMIT TO EXCAVATE IN COUNTY STREETS FROM THE L.A. COUNTY ROAD DEPT., 104 HALL OF RECORDS, AND MAKE A DEPOSIT WITH THE COUNTY ENGINEER, 700 PERSIMMON AVENUE BUILDING, SUFFICIENT TO COVER THE COST OF CONSTRUCTION INSPECTION AND EROSION PLANS.

COUNTY OF LOS ANGELES, CALIFORNIA.

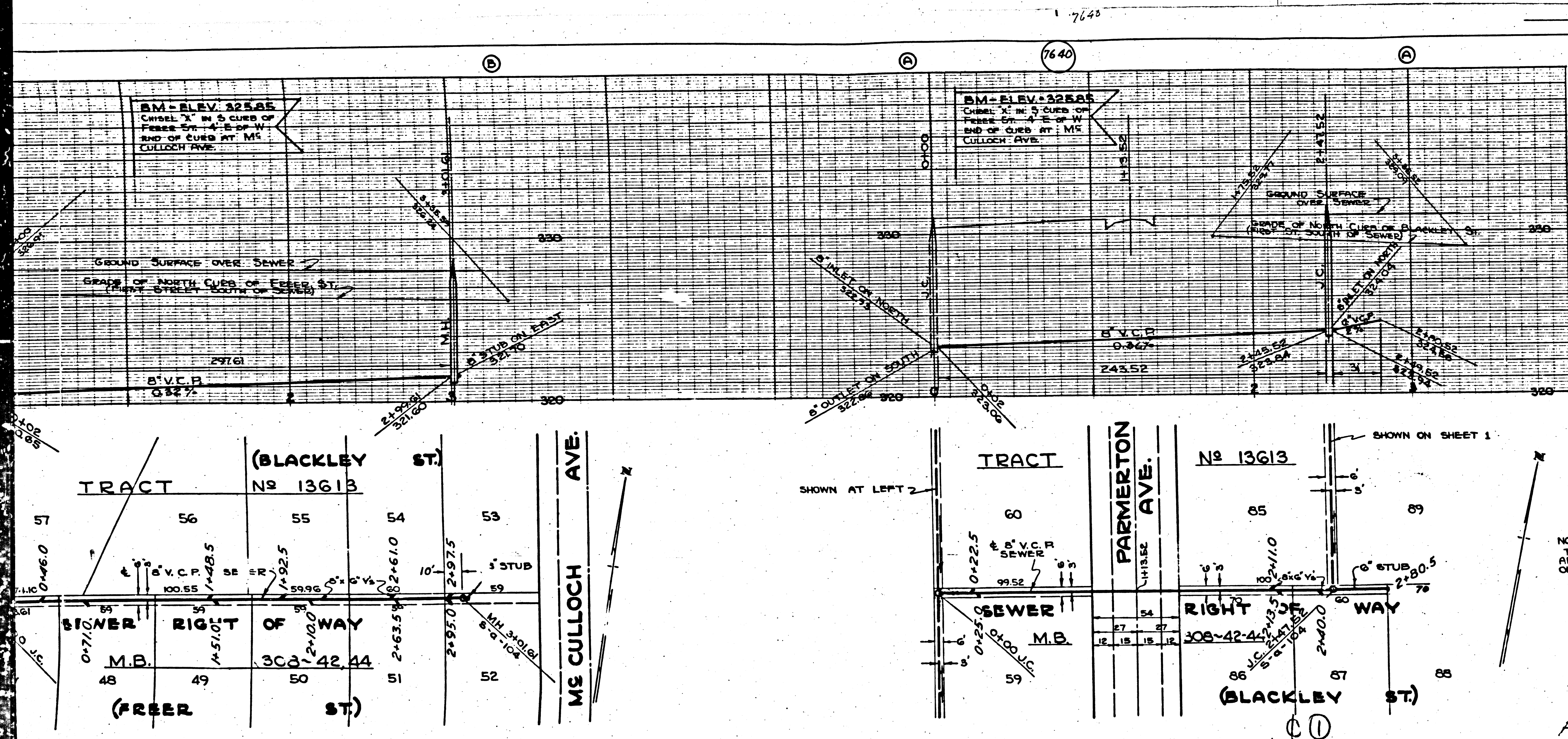
APPROVED: *W. S. Klema*
COUNTY ENGINEER

APPROVED: *W. S. Klema*
FOR CHIEF ENGINEER OF COUNTY
SANITATION DISTRICT NO. 12

OFFICE ENGINEER

CHECKED BY: *J. B. Moore* OCT 14, 1947
OFFICE OF COUNTY ENGINEER - REG. C.E. NO. 6486

Final CK T.I.P. 2/26/48



PROFILE, ALIGNMENT AND GRADE OF
SANITARY SEWERS
 TO BE CONSTRUCTED IN
DANBURY STREET
 BETWEEN EL MONTE AVE. AND 278.5 FT. E.L.V.
DAINES DRIVE
 BETWEEN EL MONTE AVE. AND 275.5 FT. E.L.V.
SANITARY SEWER RIGHTS OF WAY
 IN TRACT No 13613 MB 308-42,43,44.

PRIVATE CONTRACT NO. 641
 W.S. 4G
SHEET 2 OF 2 SHEETS
 AUGUST, 1947

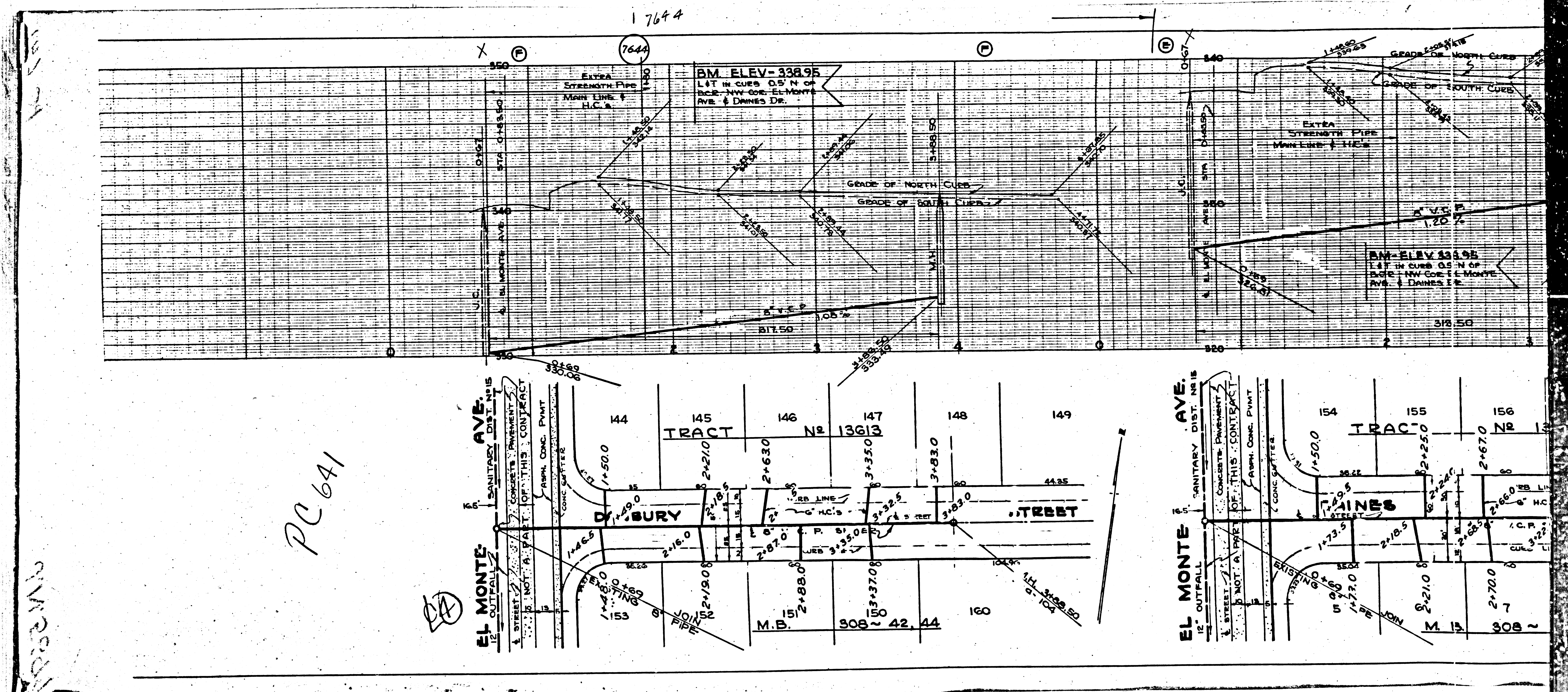
PREPARED IN THE OFFICES OF
WALSH AND KLEMA CIVIL ENGINEERS
 BY: *R. L. Klema*
 REG. C.E. NO. 6406
 FOR CONSTRUCTION NOTES SEE SHEET 1
 FOR LEGEND
 SEE PLAN NO. S-2-64

NOTE:
 TO GET ON L.A. CO. SAN. DIST. DATUM,
 ADD 0.15 FT. TO ALL B.M.'S SHOWN
 ON THESE PLANS.

COUNTY OF LOS ANGELES, CALIFORNIA.
 APPROVED: *[Signature]*
 COUNTY ENGINEER
 APPROVED: *[Signature]*
 OFFICE ENGINEER

CHECKED BY: *[Signature]* OCT. 12, 1947
 OFFICE OF COUNTY ENGINEER - REG. C.E. NO. 624

Final Ck T.T.P. 2/26/48



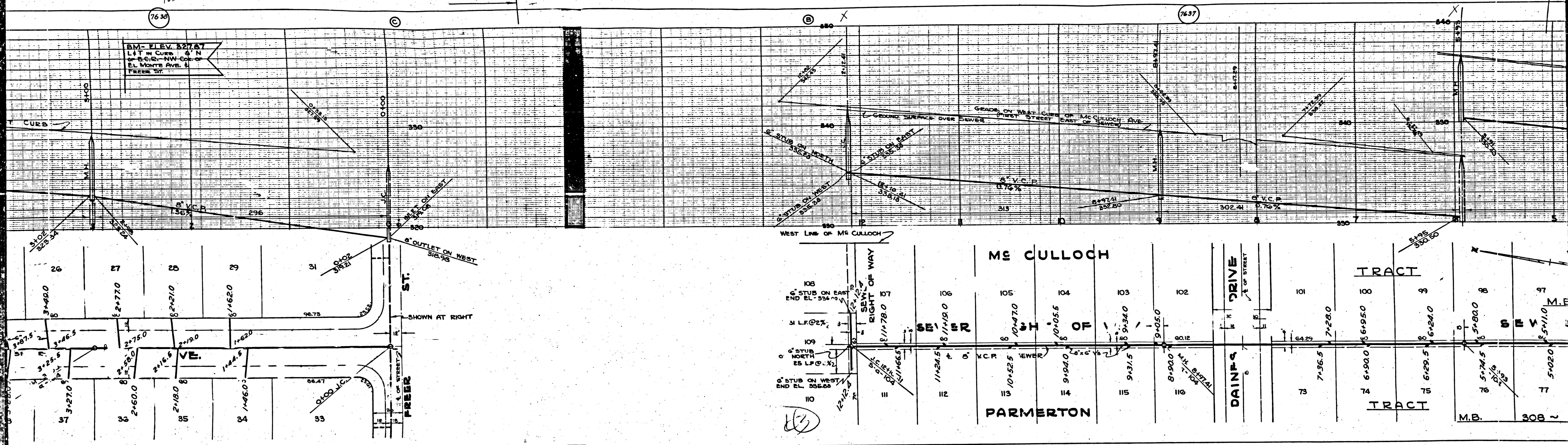
PC 641

17644

7638
7639

7637

BM - ELEV. 527.67
L&T in CURB - 4' N
of S.E. COR - NW COR of
EL. MONTE AVENUE &
FREEER ST.



M2

M6

7636
⑦

BM-ELEV. 326.95
LAT. IN CURB 0.5 N. OF
B.C.E. - NW COR. OF
EL MONTE AVE. &
DAINES DRIVE

GROUND SURFACE OVER SEWER
GRADE ON WEST CURB OF
MCCULLOCK AVE. (EAST SIDE)
PART OF SEWER

6" V.C.P.
1.08%

6" V.C.P.
1.08%

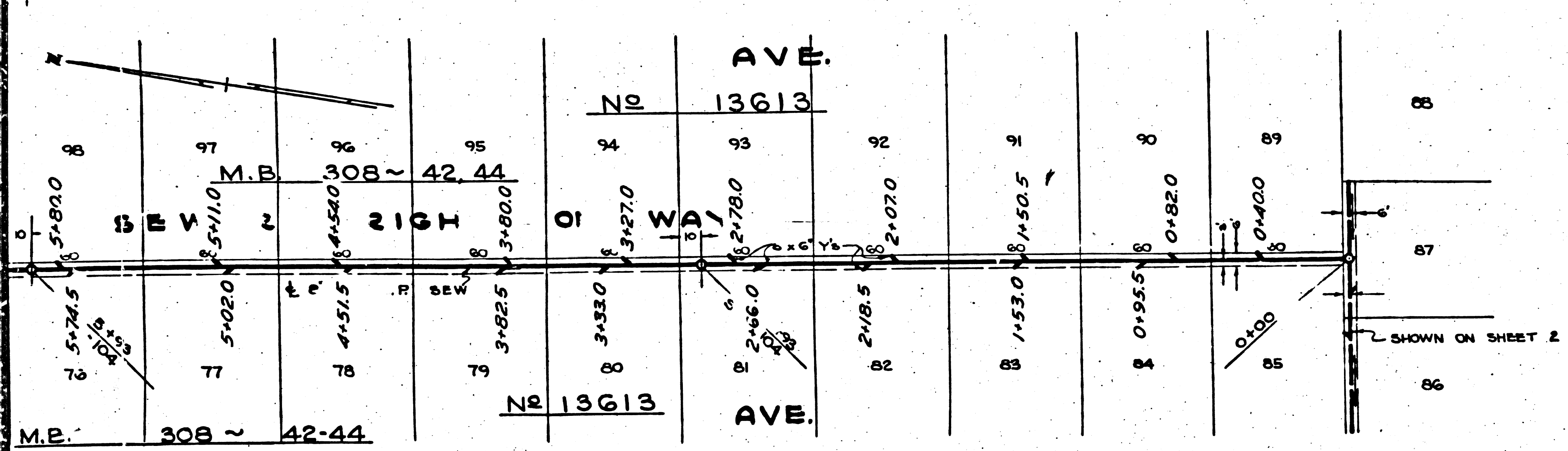
6" V.C.P.
2.12%

BM-ELEV. 327.87
LAT. IN CURB 0.5 N. OF
B.C.E. - NW COR. OF
EL MONTE AVE. &
FREESE ST.

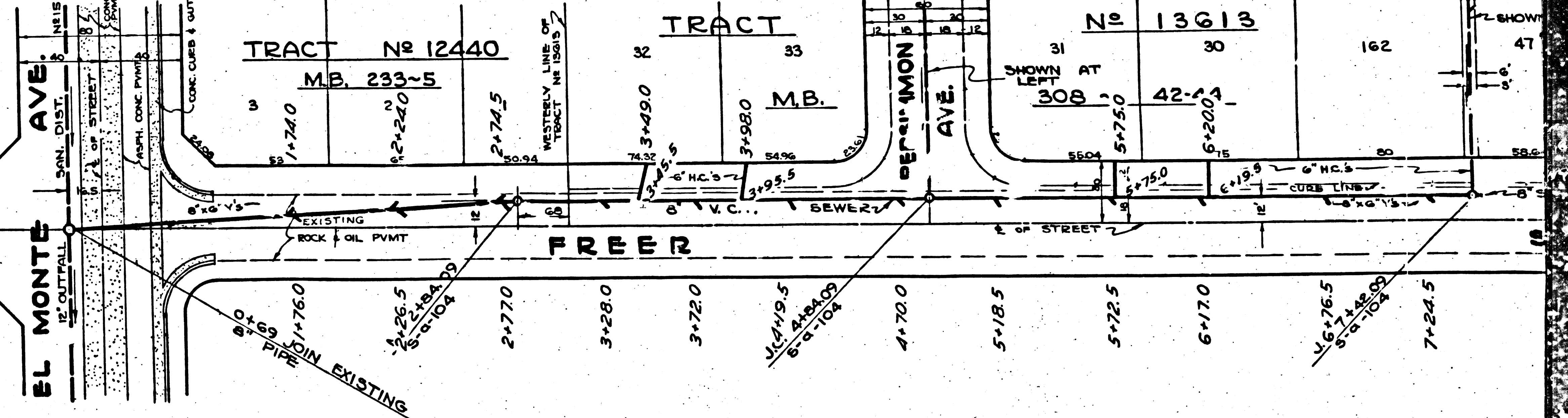
6" V.C.P.
0.32%

6" V.C.P.
0.32%

6" V.C.P.
0.32%

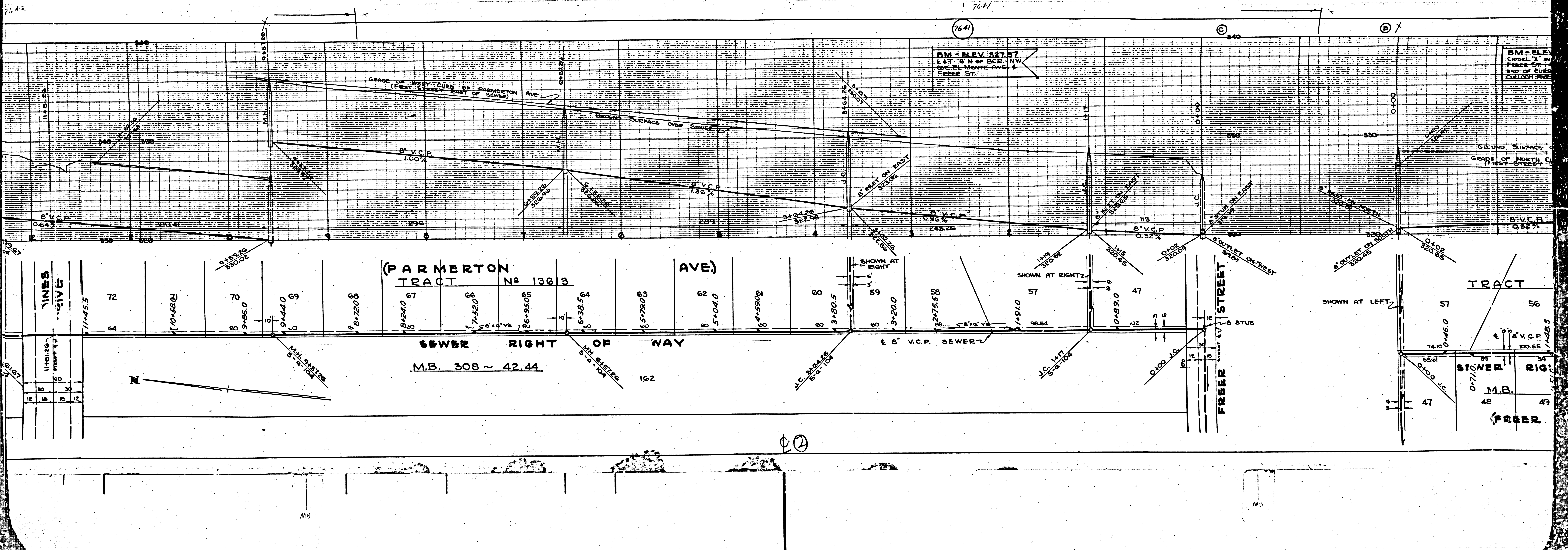


⑧



M5

M6



BM - ELEV. 327.87
 E & T 8' N of B.C.E. - NW
 COR. EL MONTE AVE. &
 FREE ST.

BM - ELEV.
 CORNER 'X' of
 FREE ST. &
 END OF CURVE
 CULLOCK AVE.

(PARMERTON TRACT No 1363 AVE)

SEWER RIGHT OF WAY
 M.B. 308 ~ 42.44

TRACT

SEWER RIG

M.B. 48 ~ 49

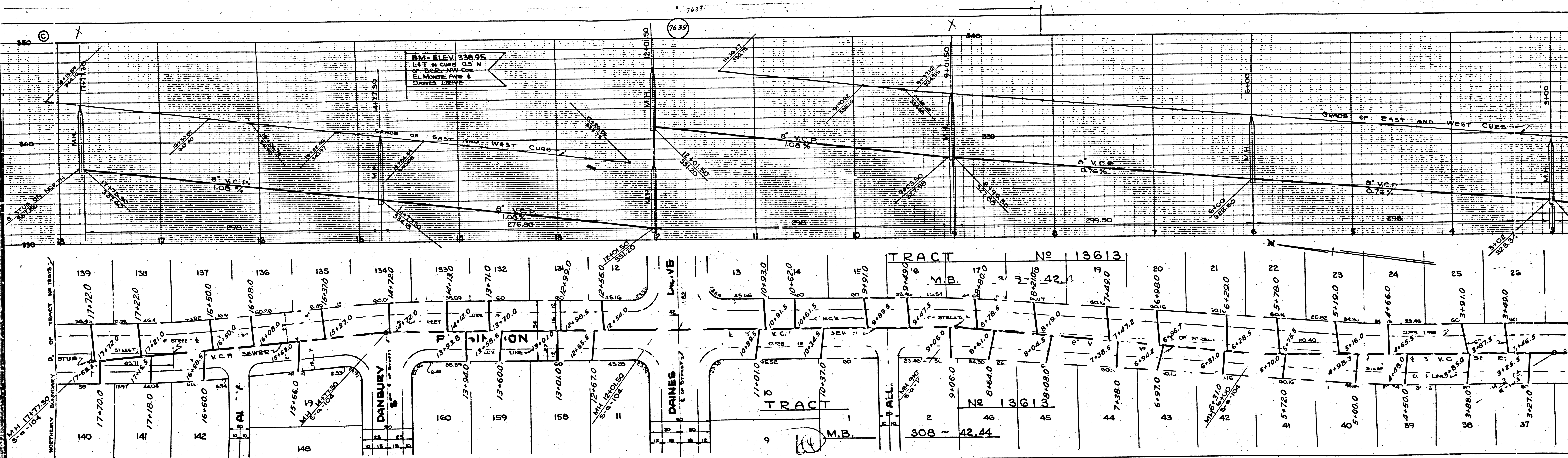
(FREE)

LINE SIZES	MANHOLE SIZES
12"	36"
10"	30"
8"	24"
6"	18"

②

M3

M5

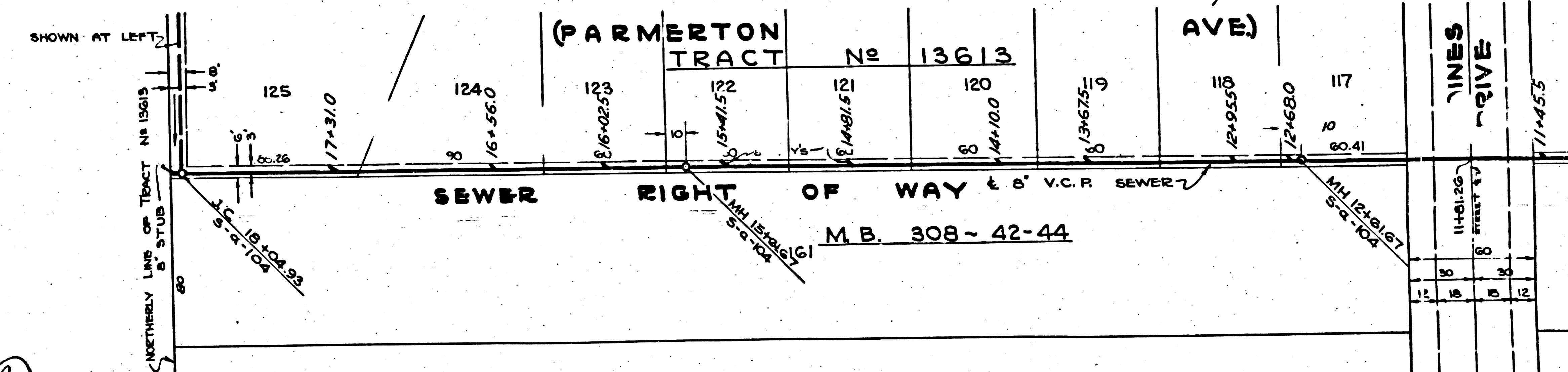
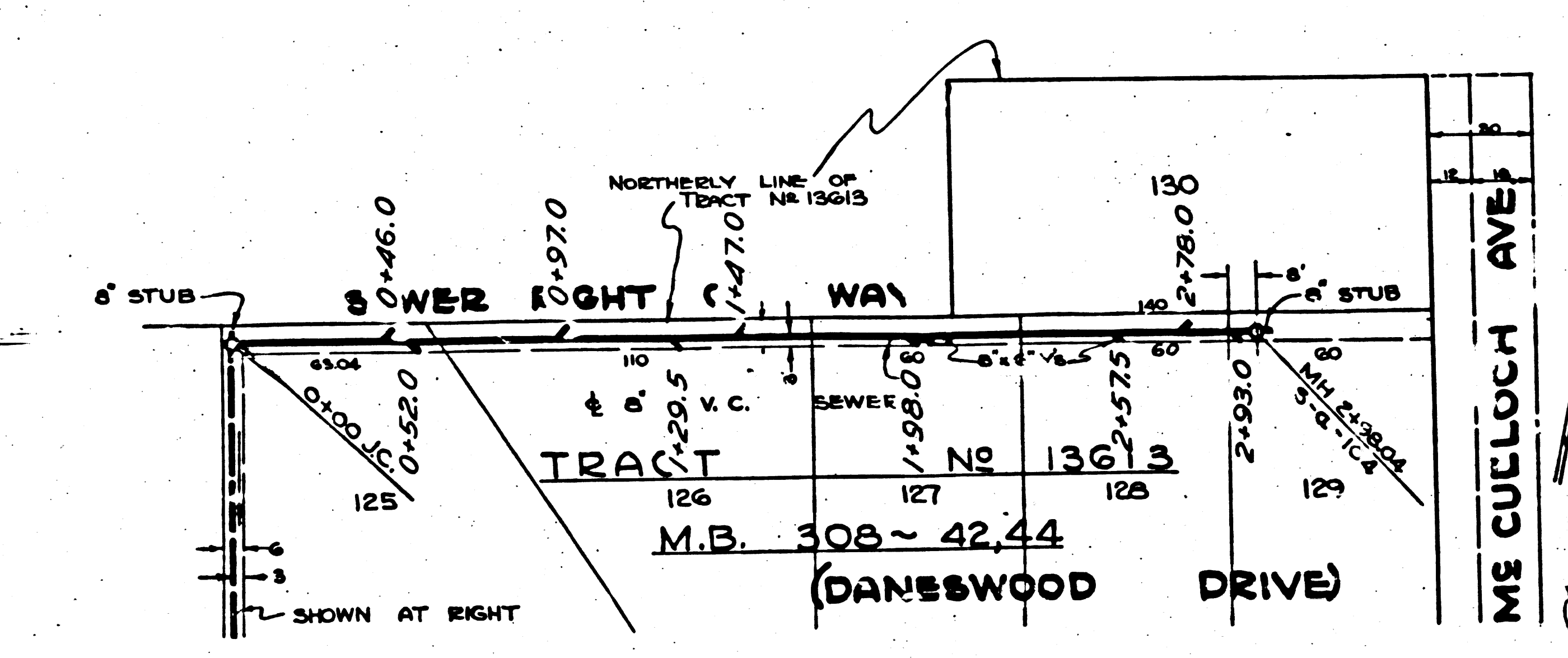
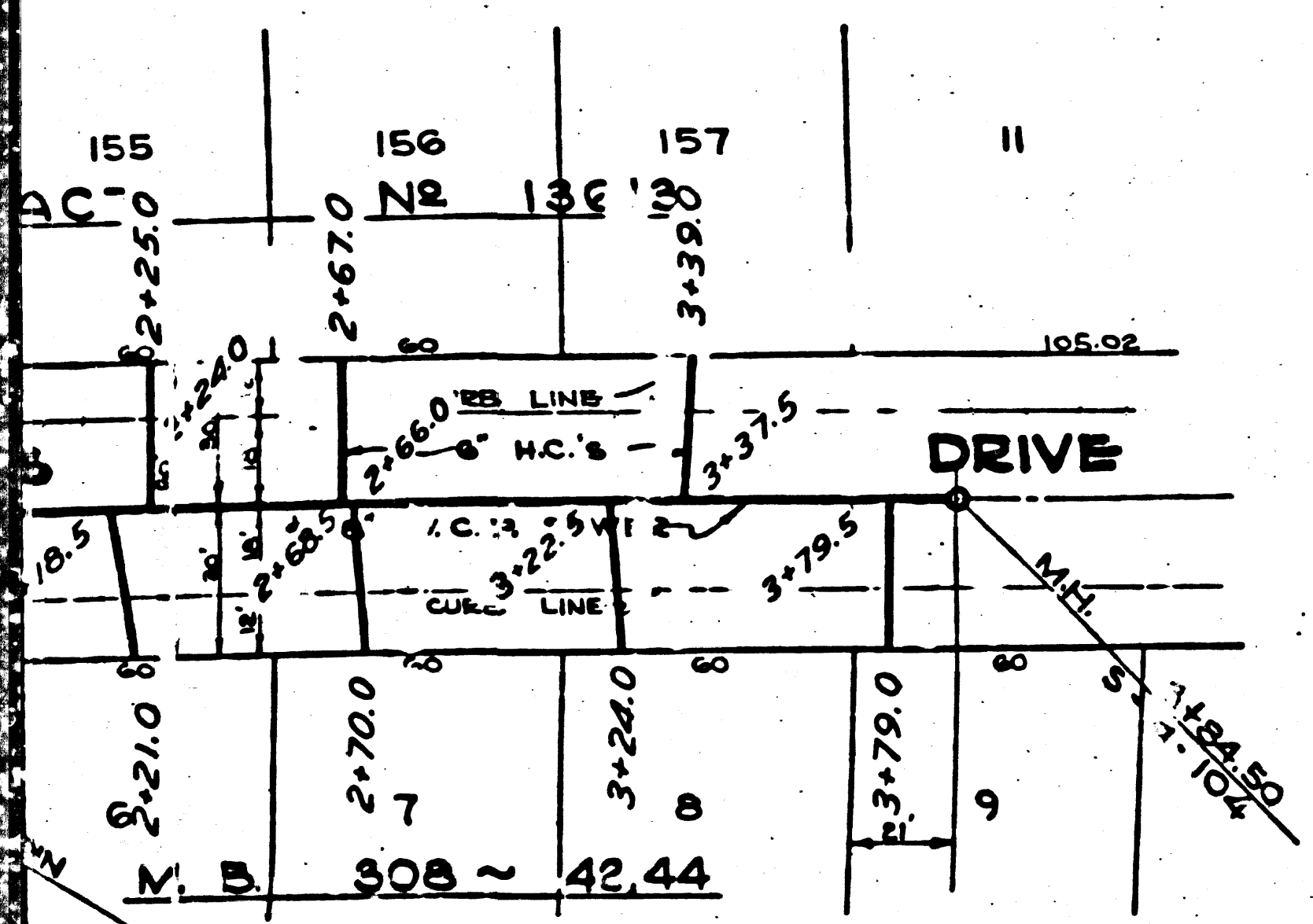
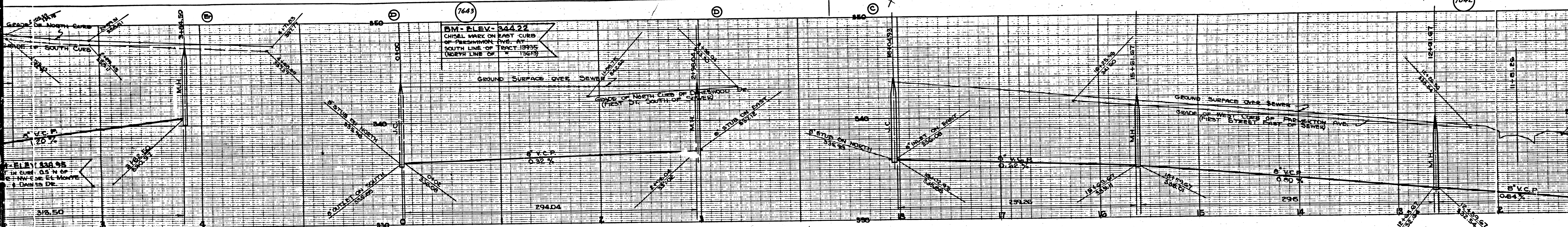


TRACT No 13613

139	138	137	136	135	134	133	132	13	15	17	19	20	21	22	23	24	25	26	
17+70.0	17+220	16+500	16+080.0	15+370	14+720	14+130	13+710	10+930	9+010	8+000	7+490	6+980.0	6+200	5+780.0	5+190	4+660	3+910	3+400	
140	141	142	143	144	145	146	147	148	149	150	151	152	153	154	155	156	157	158	
17+70.0	17+180	16+600	16+000	15+370	14+720	14+130	13+710	13+010	12+540	11+010	10+370	9+060	8+640	7+380	6+970	5+720	5+000	4+500	3+880

1 7643

7642



M6

M6