

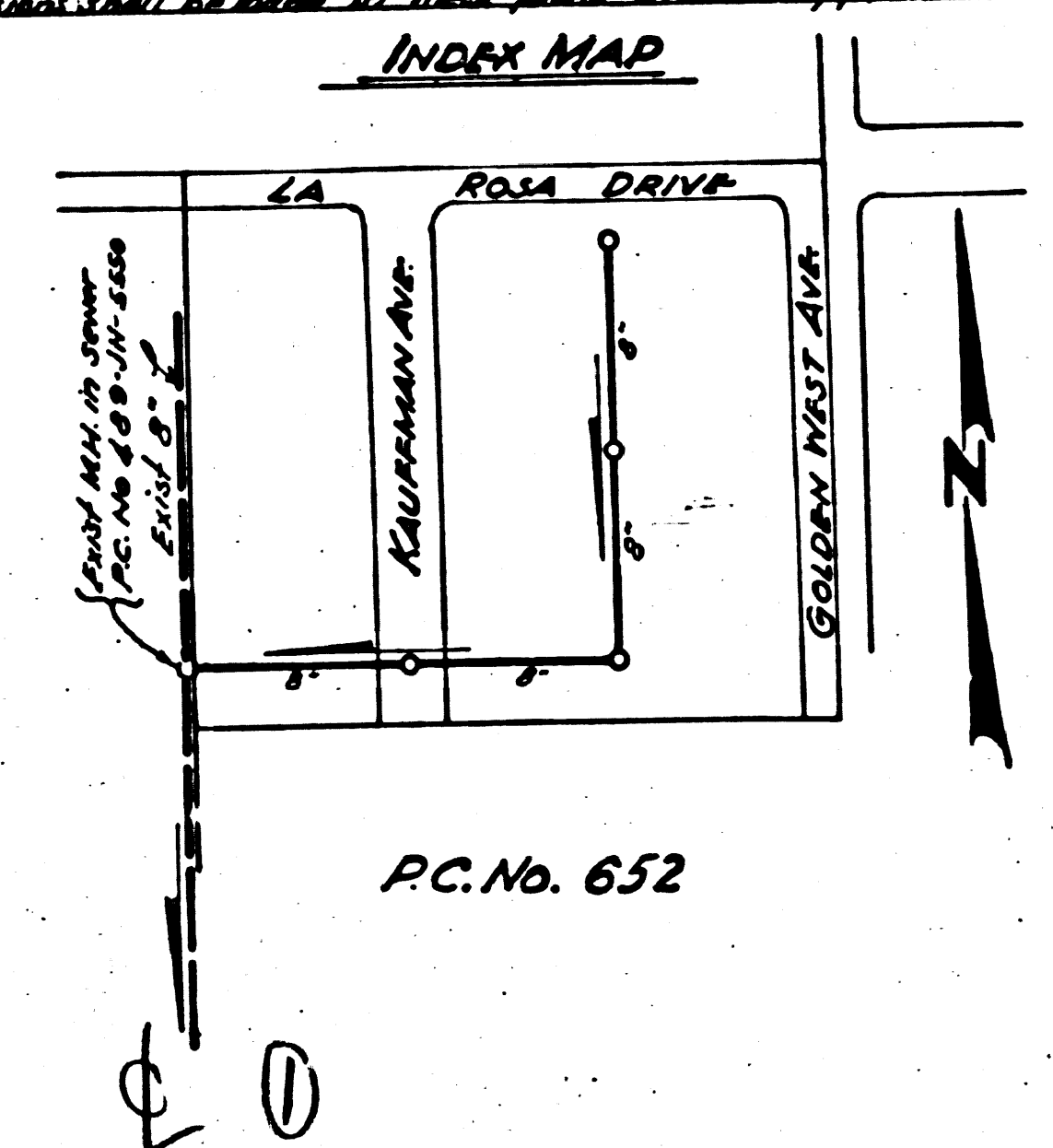
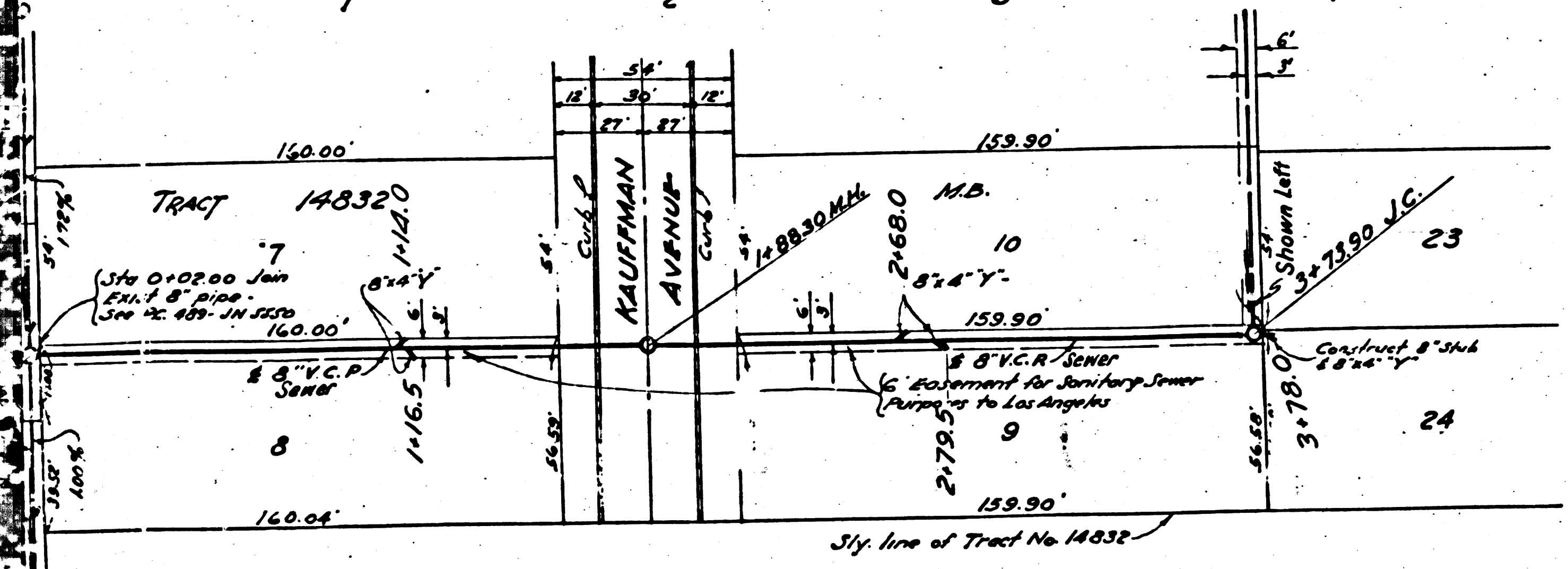
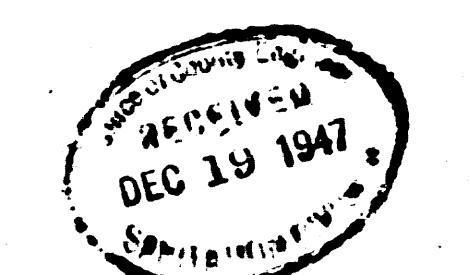
- (1) Use standard Marshall Frame and Cover, S-117.
- (2) Use standard strength Pipe (Except as noted).
- (3) Use cement mortar for all vitrified clay pipe joints.
- (4) Construct top of all structures to right of way 6" above finished grade.
- (5) All structures shall be brick sewer structures S-117.
- (6) Excavate four feet of sewer at points of intersection with poles as per S-117.

**PROFILE ALIGNMENT AND GRADE OF
SANITARY SEWERS
TO BE CONSTRUCTED IN
SANITARY SEWER RIGHT OF WAY
SOUTH OF LA ROSA DR. FROM N.W. TRACT BNDRY EAST TO
SEWER R/W BETWEEN KAUFMAN AVE & GOLDEN WEST AVE
AND
SANITARY SEWER RIGHT OF WAY
BETWEEN KAUFMAN AVE & GOLDEN WEST AVE
IN TRACT No. 14832
PRIVATE CONTRACT No. 652
M.S. 44**

Note: No representation of the County Engineer will survey or layout any portion of the work. The sewer as laid authorized representative shall furnish the County Engineer with ground elevations and stations of all house connections and "Y" branches and shall provide labels for them at their proper locations with identifying plainly marked. Any change of location shall be reported in writing by the owner or his representative. No revision shall be made in these plans without approval of the County Engineer.

SHEET 1 OF 1 SHEET
SCALE: VERT. 1" = 4'
HORIZ. 1" = 40'
AUGUST 1947
PREPARED IN THE OFFICES OF

KARL F. TUTTLE - CIVIL ENGINEER
Karl F. Tuttle
Karl F. Tuttle - R.E. 2000



NOTE: Grades to which this improvement is to be constructed are shown on plans and profiles. Grade points for top of curb & center line of alley are shown by circles on profiles of all points between designated points the grade shall be established so as to conform to a straight line drawn between said designated points. Elevations are in feet above U.S.C.S. or mean sea level. This drawing and the data hereon are hereby made a part of the specifications. Work shall be constructed according to specifications on file in the office of the County Engineer and shall be prosecuted only in the presence of the County Engineer. Before work can be started, the contractor must obtain a permit to excavate in county streets from the L.A. County Road Dept., 104 Hall of Records, and make a deposit with the County Engineer, 700 Fashion League Bldg., sufficient to cover the cost of construction, inspection and Record Plans.

COUNTY OF LOS ANGELES, CALIFORNIA

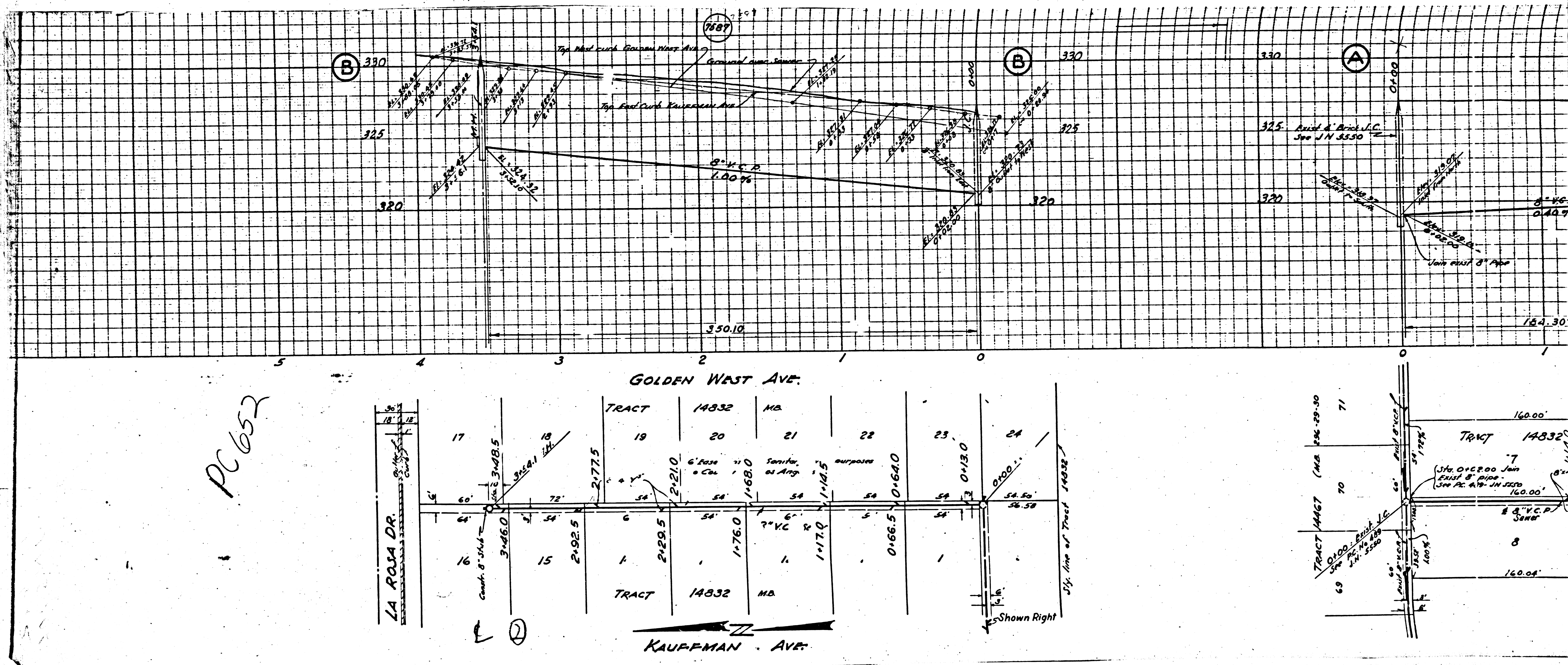
Approved: *Karl F. Tuttle*
County Engineer

Approved: *[Signature]*
Chief Engineer of County Sanitation District No. 12

Checked By: *[Signature]*
Office of County Engineer
Box C.P. No. 2104

Final C.E. T.P. 2/1/48

14832



Lot	Area	Notes
17	3,465.0	containing 8' sidewalk
18	3,561.1	
19	2,120.0	6'2000 = 6'000
20	1,760.0	7' VC R
21	1,170.0	1'10.5'
22	0,665.0	0'64.0'
23	0,130.0	
24	0,400.0	

