

(1) USE STANDARD MANHOLE FRAMES AND COVERS, 5'-0" DIA.  
 (2) USE STANDARD LENGTH PIPE.  
 (3) USE CEMENT MORTAR FOR ALL VITRIFIED CLAY PIPE JOINTS.  
 (4) RESURFACE ALL TRENCH WITHIN PAVED AREA TO MEET LOS ANGELES COUNTY ROAD DEPT. REQUIREMENTS.  
 (5) CONSTRUCT HOUSE CONNECTIONS WITH INVERT AT PROPERTY LINE 5 FEET BELOW GRADE OF CURB.  
 (6) ALL STRUCTURES SHALL BE BRICK SEWER STRUCTURES, 5'-0" DIA.

NOTE: NO REPRESENTATIVE OF THE COUNTY ENGINEER WILL SURVEY OR SET OUT ANY PORTION OF THE WORK. THE OWNER OR HIS AUTHORIZED REPRESENTATIVE SHALL FURNISH THE COUNTY ENGINEER WITH BOUNDARY LINES AND STREETS TO ALL HOUSE CONNECTIONS AND TO MANHOLES AND SHALL PROVIDE PLANS FOR THEM AT THEIR PROPER LOCATIONS WITH STATIONING PLAINLY MARKED. ANY CHANGE OF LOCATION SHALL BE REQUESTED IN WRITING BY THE OWNER OR HIS REPRESENTATIVE. MODIFICATIONS SHALL BE MADE IN THIS PLAN WITHOUT APPROVAL OF THE COUNTY ENGINEER.

**PROFILE, ALIGNMENT AND GRADE OF  
SANITARY SEWERS**  
 TO BE CONSTRUCTED IN  
**FIRST ALLEY WEST OF AVALON BLVD.**  
 BETWEEN FIRST ALLEY NORTH OF 132<sup>ND</sup> ST. AND A POINT  
 3 FEET NORTH OF LOT 2, TRACT NO. 13783  
**FIRST ALLEY NORTH OF 132<sup>ND</sup> ST.**  
 BETWEEN FIRST ALLEY WEST OF AVALON BLVD. AND  
 A POINT 60 FEET WEST THEREOF.

**PRIVATE CONTRACT NO. 633**  
 W.S. 26  
**ONE SHEET**  
 OCT. 1947

PREPARED IN THE OFFICES OF

ROBIN A. GRAVES ENGINEERING CO.  
 BY: *Robin A. Graves*  
 REG. C.E. NO. 6107

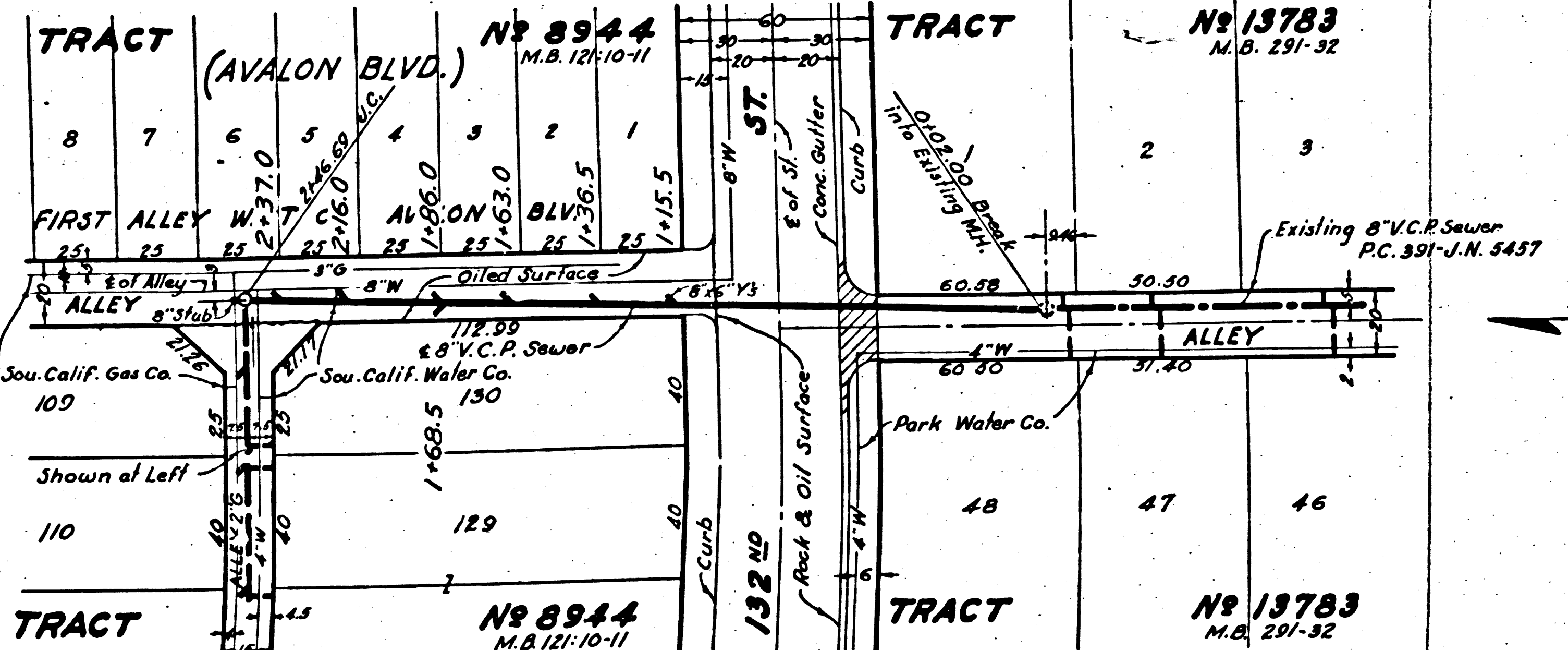
FOR LEGEND  
 SEE PLAN NO. S-6-64

NOTE: GRADES TO WHICH THIS IMPROVEMENT IS TO BE CONSTRUCTED ARE SHOWN ON PLANS AND PROFILE. GRADE POINTS FOR TOP OF CURB, CENTER OF STREET OR CENTER LINE OF ALLEY ARE SHOWN BY CIRCLES ON PROFILES. AT ALL POINTS BETWEEN DESIGNATED POINTS THE GRADE SHALL BE ESTABLISHED SO AS TO CONFORM TO A STRAIGHT LINE DRAWN BETWEEN SAID DESIGNATED POINTS.  
 ELEVATIONS ARE IN FEET ABOVE U.S.S. DATUM OR MEAN SEA LEVEL.  
 THIS DRAWING AND THE DATA HEREON ARE HEREBY MADE A PART OF THE SPECIFICATIONS. WORK SHALL BE CONSTRUCTED ACCORDING TO SPECIFICATIONS ON FILE IN THE OFFICE OF THE COUNTY ENGINEER AND SHALL BE PROSECUTED ONLY IN THE PRESENCE OF THE COUNTY ENGINEER.  
 BEFORE WORK CAN BE STARTED, THE CONTRACTOR MUST OBTAIN A PERMIT TO EXCAVATE IN COUNTY STREETS FROM THE L.A. COUNTY ROAD DEPT., 801 NORTH MAIN ST., AND MAKE A DEPOSIT WITH THE COUNTY ENGINEER, 700 FASHION LEAGUE BUILDING, SUFFICIENT TO COVER THE COST OF CONSTRUCTION INSPECTION AND RECORD PLANS.  
 COUNTY OF LOS ANGELES, CALIFORNIA

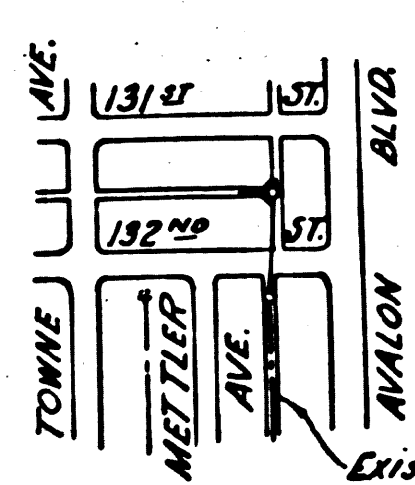
APPROVED *W. J. Jones*  
 COUNTY ENGINEER  
 APPROVED *W. J. Jones*  
 CHIEF ENGINEER OF COUNTY  
 SANITATION DISTRICT NO. 1

APPROVED FOR THE COLLECTION OF LIQUID INDUSTRIAL WASTE,  
 CONNECTION PERMITS MUST BE OBTAINED FROM THE COUNTY ENGINEER  
 DATE: 10/15/47  
 ASST. INDUSTRIAL WASTE ENGINEER, OFFICE OF THE COUNTY ENGINEER

CHECKED BY *B. H. Hughes* Oct 15 1947  
 OFFICE OF COUNTY ENGINEER, REG. C.E. NO. 5819



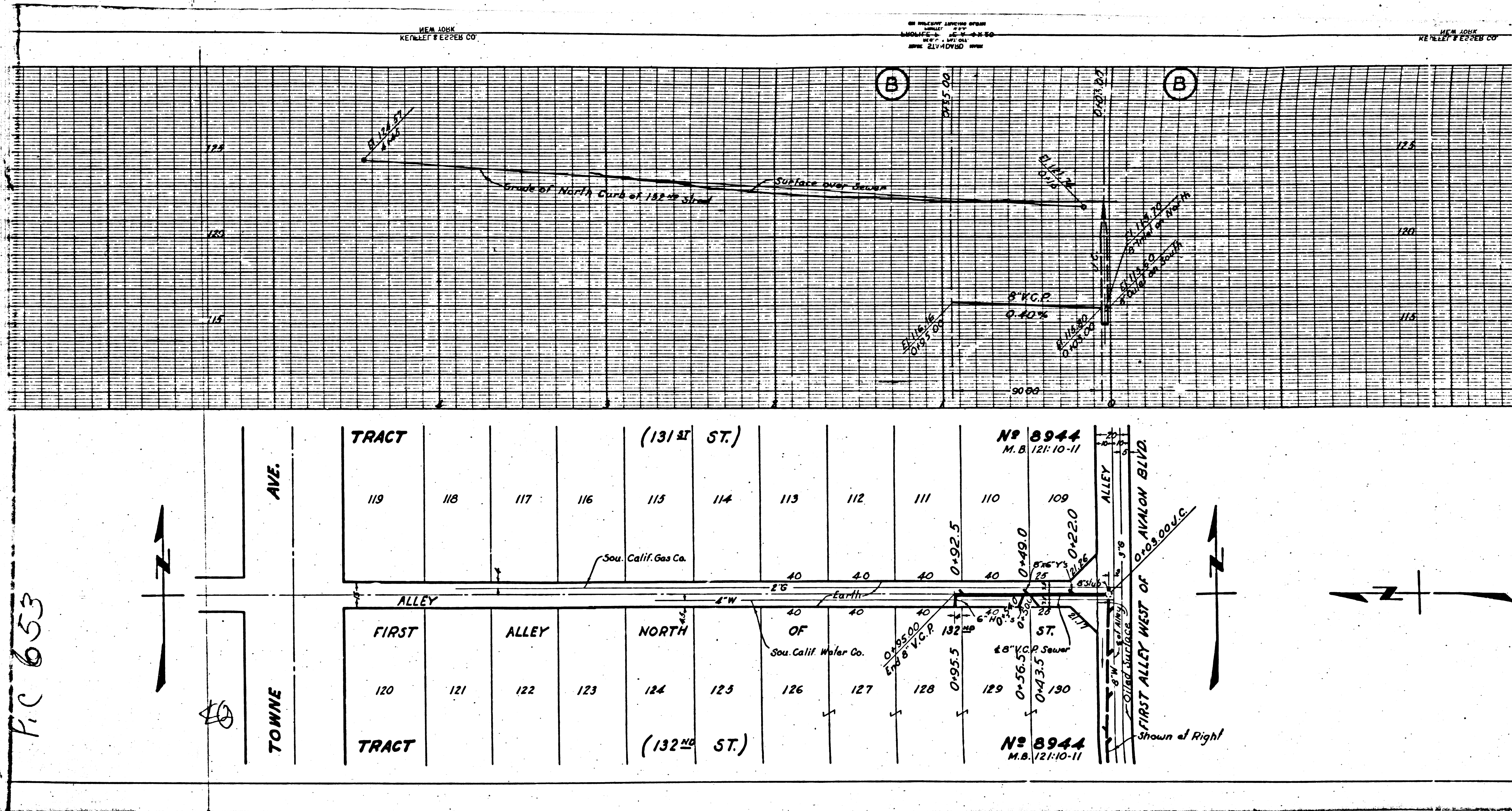
P.C. NO.  
 INDEX MAP



Scale: 1" = 600'

Final CENTER 12/8/47

B.C. 023  
 1947



P.C. 653

M6