

GENERAL AND TRACT MAP BEING PREPARED BY THE ENGINEER

J.N. 672
C.E.L.S.

E.V. BODY OF THE CITY OF LOS ANGELES

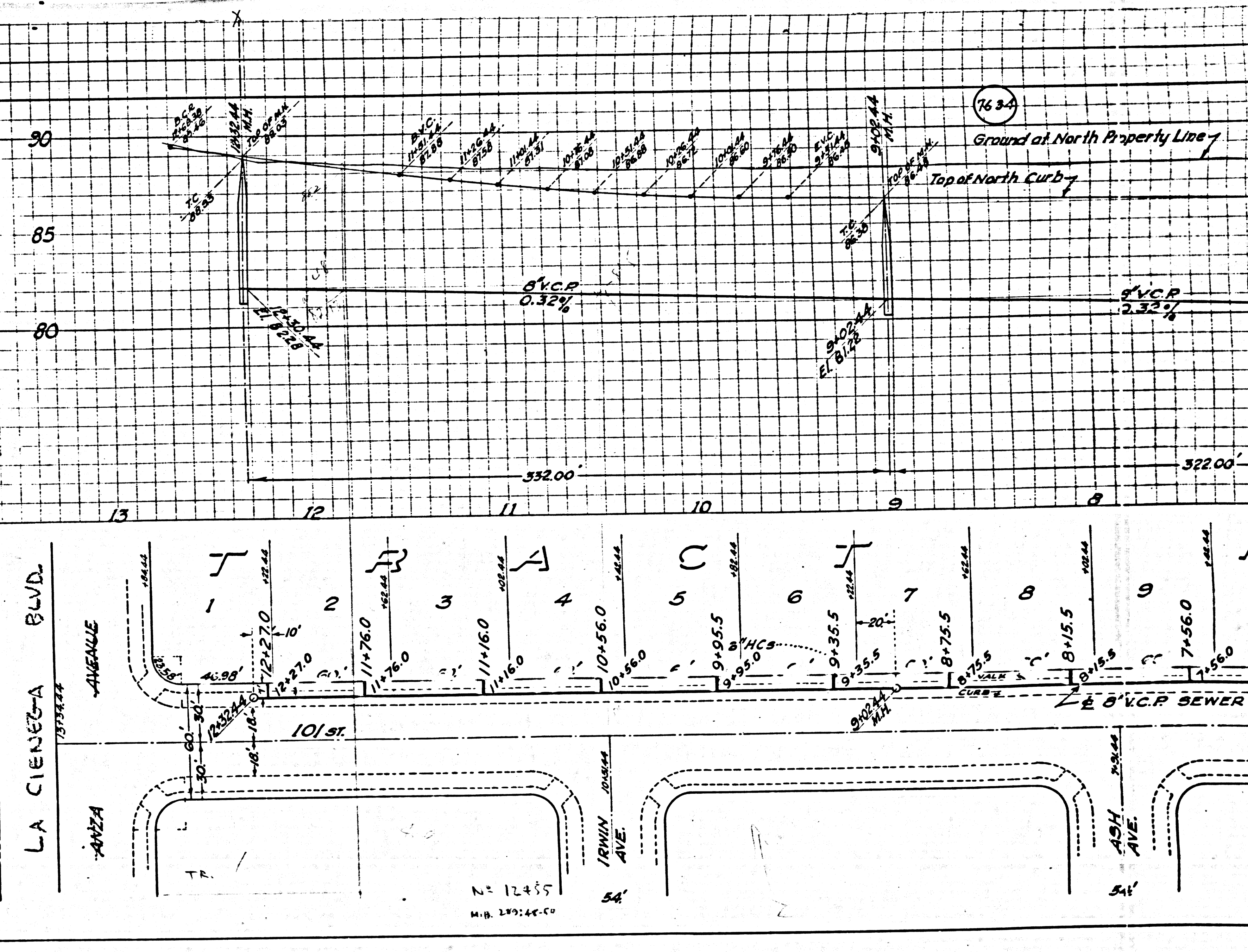
LA CIENEGUA BLVD.

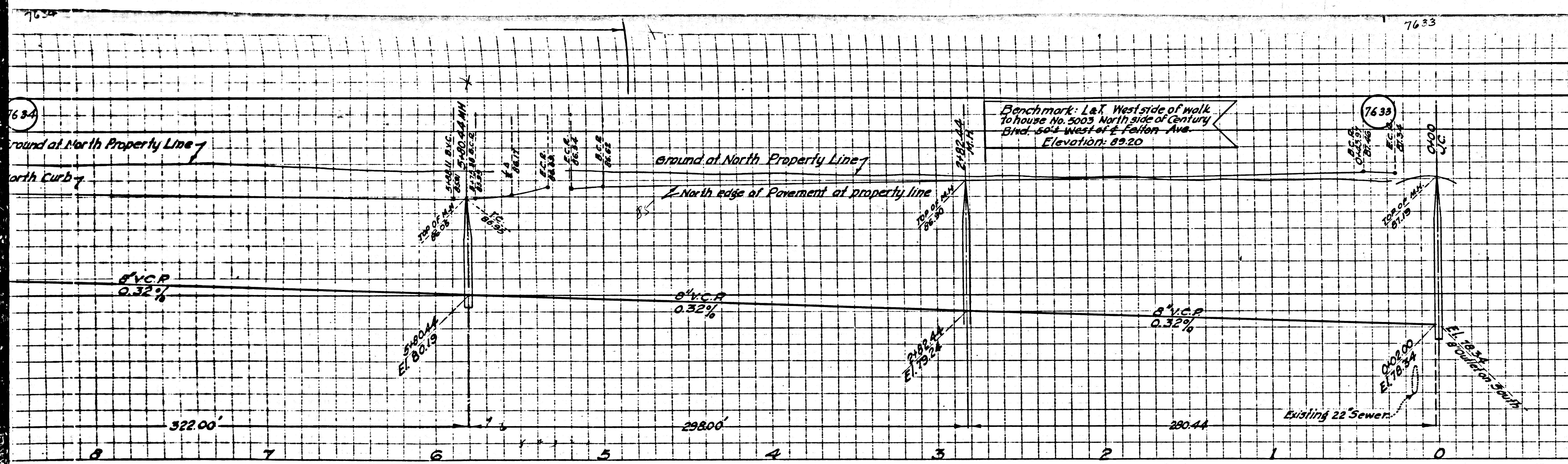
IRVING AVENUE

ASH AVE.

101 ST.

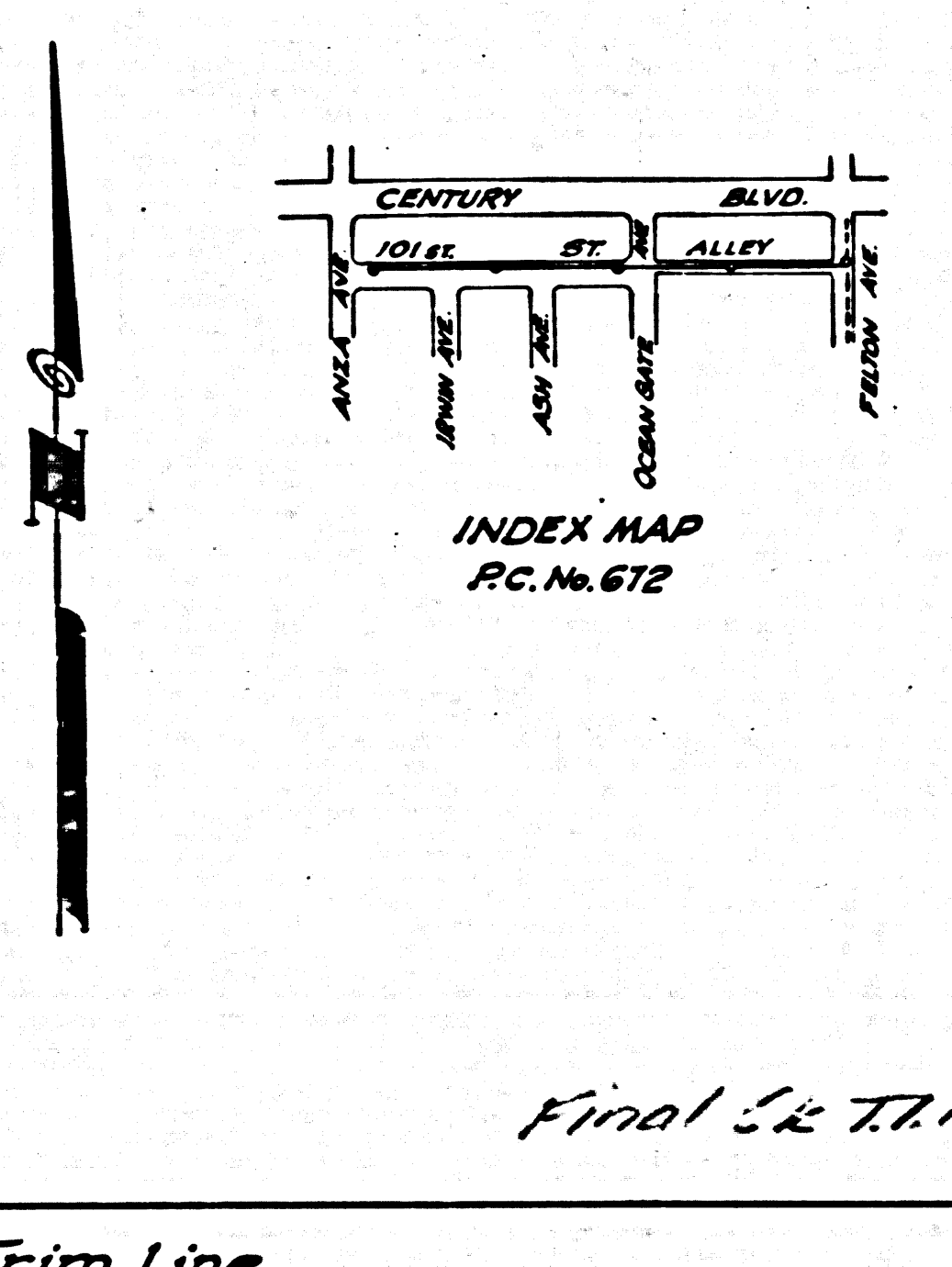
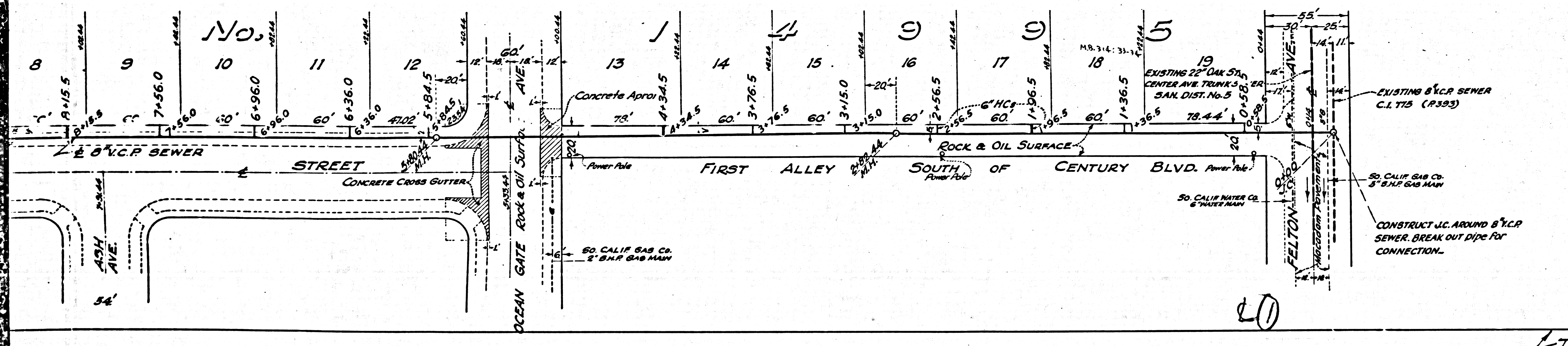
N= 12435
M.B. 189744-01





- 1 Use Standard Manhole Frames & Covers 24\"/>
 - 2 Use Standard Strength Pipe, except as noted
 - 3 Use cement mortar for all vitrified clay pipe joints
 - 4 Resurface all trench with paved area to meet Los Angeles County Road Dept requirements
 - 5 Construct house connections with inverts at property line 4 feet below curb grade
 - 6 Encase 4 feet of sewer of points of interference with poles as per S.O. 6
 - 7 All structures shall be brick sewer structures S.O. 106
 - 8 Construct tops of all structures in Rights of Way 6\"/>
- Note: No representative of the County Engineer will survey or lay out any portion of the work.
 The owner or his authorized representative shall furnish the County Engineer with grade sheets and stations of all house connections & Y branches & shall provide stakes for them at their locations with stationing plainly marked. Any change of location shall be requested in writing by the owner or his representative.
 No revisions shall be made in these plans without approval of the County Engineer.

PROFILE ALIGNMENT AND GRADE OF
SANITARY SEWERS
 TO BE CONSTRUCTED IN
101st STREET
 BETWEEN ANZA AND OCEAN GATE AVENUES
 ALSO IN
 BETWEEN OCEAN GATE AND FELTON AVENUES
 SOUTH OF CENTURY BOULEVARD
 TRACT No. 14995
 PRIVATE CONTRACT No. 672
 W.S. 24
 SHEET 1 OF 1 SHEET
 NOVEMBER 1947
 PREPARED IN THE OFFICES OF
ADAMS AND ELLS ENGINEERS
 BY *Handwritten Signature*
 REG. C. E. No. 1832



FOR LEGEND
 SEE PLAN NO. S-8-84

NOTE:
 GRADES TO WHICH THIS IMPROVEMENT IS TO BE CONSTRUCTED ARE SHOWN ON PLANS & PROFILE. GRADE POINTS FOR TOP OF CURB, CENTER LINE OF STREET OR CENTER LINE OF ALLEY ARE SHOWN BY CIRCLES ON PROFILES. AT ALL POINTS BETWEEN DESIGNATED POINTS THE GRADE SHALL BE ESTABLISHED SO AS TO CONFORM TO A STRAIGHT LINE DRAWN BETWEEN SAID DESIGNATED POINTS.
 ELEVATIONS ARE IN FEET ABOVE U.S.G.S. DATUM OR MEAN SEA LEVEL.
 THIS DRAWING AND THE DATA HEREON ARE HEREBY MADE A PART OF THE SPECIFICATIONS. WORK SHALL BE CONSTRUCTED ACCORDING TO SPECIFICATIONS ON FILE IN THE OFFICE OF THE COUNTY ENGINEER AND SHALL BE PROSECUTED ONLY IN THE PRESENCE OF THE COUNTY ENGINEER. BEFORE WORK CAN BE STARTED THE CONTRACTOR MUST OBTAIN A PERMIT TO EXCAVATE IN COUNTY STREETS FROM THE L.A. COUNTY ROAD DEPT. 1104 HALL OF RECORDS AND MAKE A DEPOSIT WITH THE COUNTY ENGINEER 700 FASHION LEAGUE BUILDING SUFFICIENT TO COVER THE COST OF CONSTRUCTION INSPECTION AND RECORD PLANS.
 IF WORK IS TO BE DONE IN A STATE HIGHWAY A PERMIT MUST BE OBTAINED FROM THE STATE OF CALIFORNIA DIVISION OF HIGHWAYS 808 STATE BLDG. AFTER MAKING DEPOSIT WITH THE COUNTY ENGINEER.

COUNTY OF LOS ANGELES CALIFORNIA
 APPROVED: *Handwritten Signature*
 COUNTY ENGINEER
 APPROVED: *Handwritten Signature*
 CHIEF ENGINEER OF COUNTY SANITATION DISTRICT No. 5
 CHECKED BY: *Handwritten Signature*
 OFFICE OF COUNTY ENGINEER, REG. C. E. No. 7582

GENERAL CONTRACTOR: W. H. BARR - CIVIL ENGINEER - M-2152

Final S&T.P. 2/26/48

LD

Trim Line