

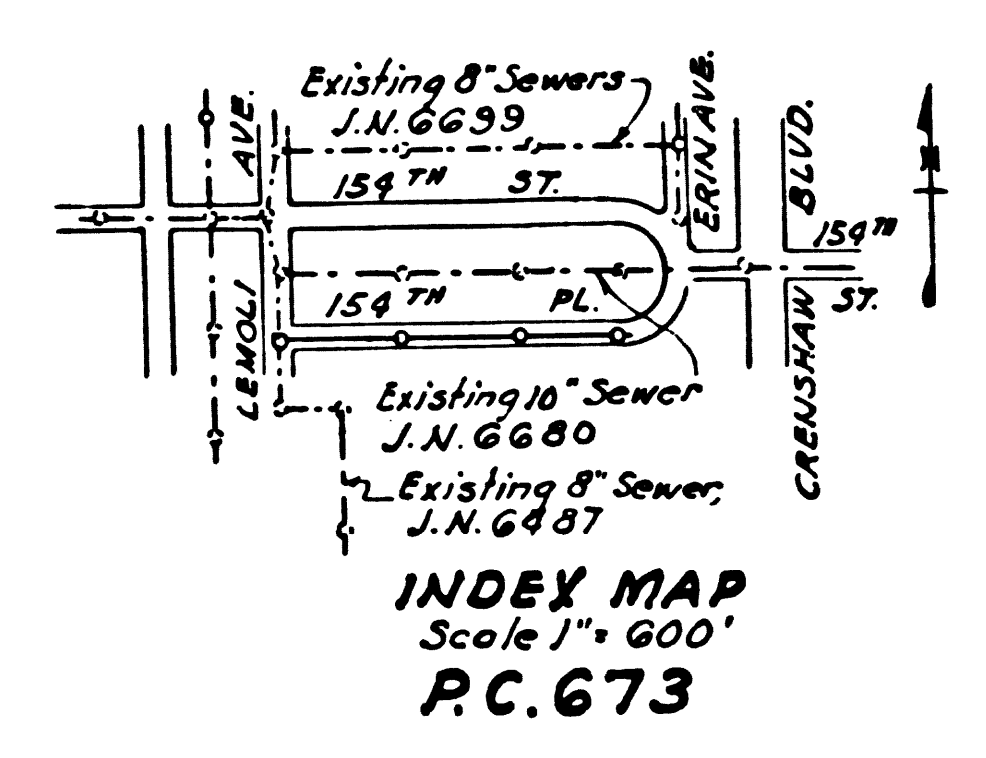
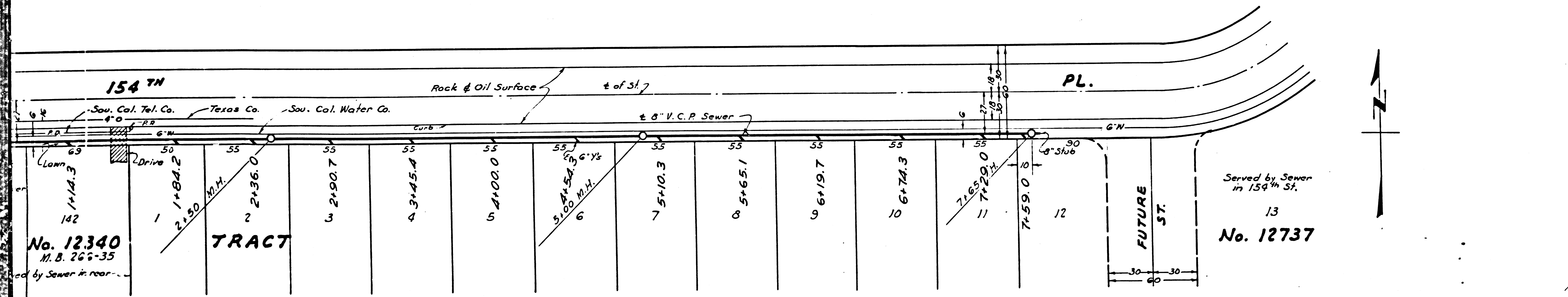
PROFILE ALIGNMENT AND GRADE OF
SANITARY SEWERS
 TO BE CONSTRUCTED IN
154TH PLACE
 BETWEEN LEMOLI AVE. & 154TH ST.

1. Use Standard Manhole Frames and Covers, S-a-117
2. Use Standard Strength Pipe
3. Use Cement Mortar for all Ungrouted Clay Pipe Joints
4. Resurface all Trench within Paved Area to meet L.A. County Road Dept. requirements
5. Excavate four feet of Sewer at points of interference with Poles as per S-a-119
6. All Structures shall be Brick Sewer Structures, S-a-100

PRIVATE CONTRACT NO. 67
 W.S. 25
 SHEET 1 OF 1 SHEET
 Scale: Vert. 1" = 4'
 Horiz. 1" = 40'
 NOV 1941
 PREPARED IN THE OFFICES OF
JONES & GILBERT

NOTE:
 No representative of the County Engineer will survey or lay out any portion of the work. The owner or his authorized representative shall furnish the County Engineer with Cross-Sections and Stations for all Poles, Structures, and all Depositions, and shall provide stakes for lines of true proper location with reflecting plainly marked. Any change of location shall be requested in writing by the owner or his representative. No revisions shall be made in these Plans without approval of the County Engineer.

BY *Paul J. Jones*
 Reg. No. 2311
 FOR LEGEND 10
 See Plan No. S-a-66



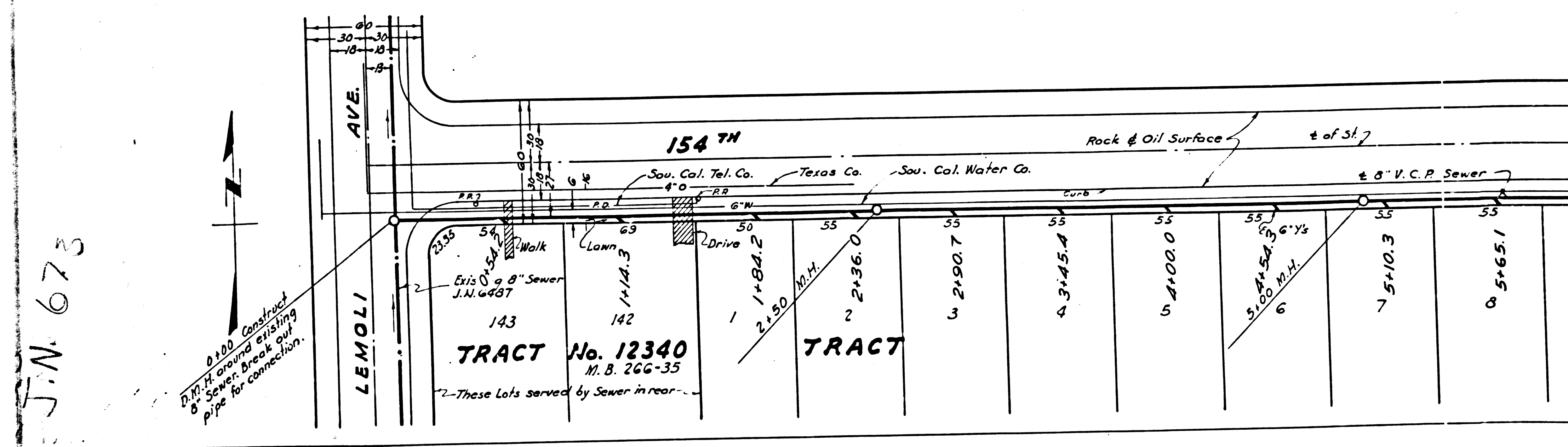
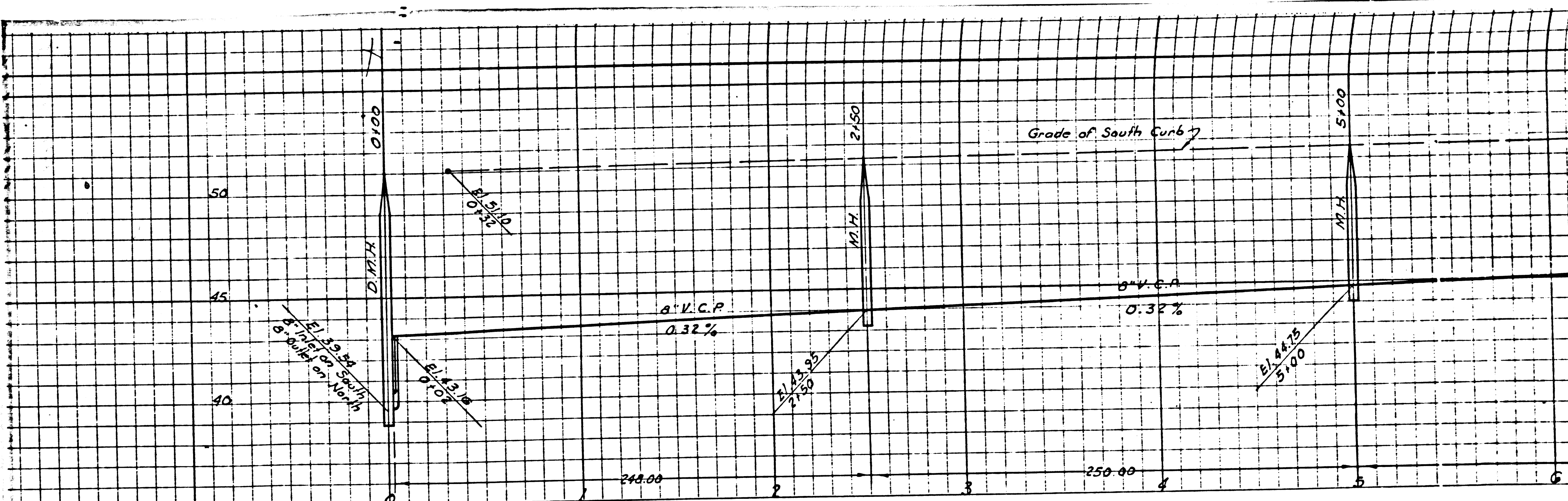
NOTE:
 Grades to which this improvement is to be constructed are shown on Grade points for top of curb, center line of streets or center line of alley circles on Profiles. All points between designated points on the grade as so as to conform to a straight line drawn between said designated points. Elevations are in feet above U.S.G.S. Datum on Mean Sea Level.
 This drawing and the data hereon are hereby made a part of the work to be constructed according to specifications on file in the County Engineer's office and shall be prosecuted only in the presence of the County Engineer. Before work can be started the Contractor must deposit a permit to deposit with the County Engineer, 700 Fashion League Building, just the cost of Construction Inspection and Record Plans.

COUNTY OF LOS ANGELES, CALIFORNIA

APPROVED *[Signature]*
 APPROVED *[Signature]*
 CHECKED *[Signature]*
 Office of County

Final Ck T.A.P. 7/12/48

EO



J.N. 673

(2)

TRACT No. 12340
M. B. 266-35

TRACT

These Lots served by Sewer in rear...

1	2	3	4	5	6	7	8
1+841.2	2+36.0	2+90.7	3+45.4	4+00.0	5+54.6	5+10.3	5+65.1