

E.M. D. 2, E.L. 143,475, P.B. 593, pg. 124
 by State Route 62nd Pl. S.W. Cor.
 20' of 3'13 of 3 and C.R.

DOUBLE SCALE

1. Use Standard Strength Pipes and Covers S-o-117
2. Use Standard Strength Pops
3. Use Cement Mortar for all Whitened Clay Pipe Joints
4. Install all Manholes within Paved Area to meet L.A. County Road Dept. requirements.
5. Excavate from Start of Sewer to all points of intersection with Poles as per S-o-119
6. All Structures shall be Brick Sewer Structures S-o-104

NOTE:
 No representative of the County Engineer will survey or lay out any portion of the work. The owner or his authorized representative shall furnish the County Engineer with Green Sheets and Stakes for all House Connections and V. Branches and shall furnish stakes for lines of Manhole locations with whiteboards already marked. Any change of location shall be reported in writing by the owner to the representative.
 No revisions shall be made in these Plans without approval of the County Engineer.

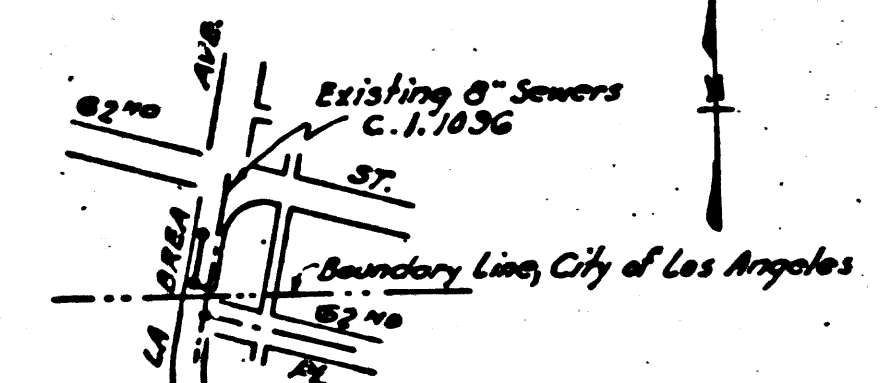
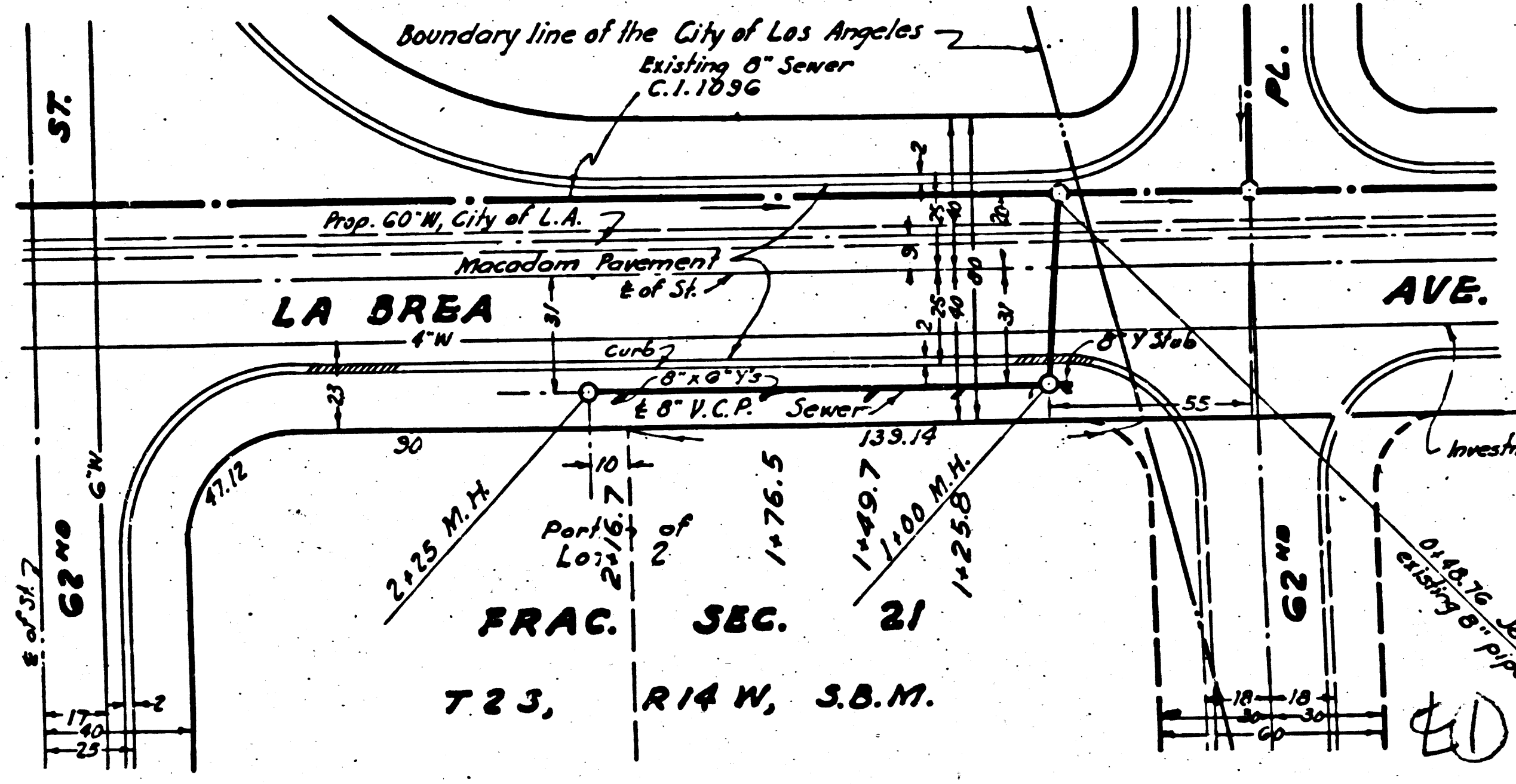
**PROFILE ALIGNMENT AND GRADE OF
 SANITARY SEWERS
 TO BE CONSTRUCTED IN
 LA BREA AVENUE
 BETWEEN 62nd PL. & 62nd ST.**

**PRIVATE CONTRACT NO. 675
 W.S. 24
 SHEET 1 OF 1 SHEET**

Scale: Vert. 1" = 5'
 Horiz. 1" = 40'
 NOV. 1947
**PREPARED IN THE OFFICE OF
 SEABOARD ENGINEERING CO.**
 by *Mark A. Seaboard*
 Reg. C.E. No. 2053

FOR LEGEND
 See Plan No. S-o-66

NOTE:
 Grades to which this improvement is to be constructed are shown on Plans and Grade points for top of curb, center line of streets, or center line of alleys are shown on Profiles. At all points between designated points the grade shall be a straight line drawn between said designated points. Elevations are in feet above U. S. G. S. Datum or Mean Sea Level. This drawing and the data hereon are hereby made a part of the specifications. Work shall be constructed according to specifications on file in the office of the County Engineer and shall be progressed only in the presence of the County Engineer. Work may be started by the Contractor only after a permit is obtained from the County Engineer, 100 Fashion League Building, sufficient to cover the cost of Construction Inspection and Record Plans.



**INDEX MAP
 Scale: 1" = 600'
 P.C. 675**

COUNTY OF LOS ANGELES, CALIFORNIA

APPROVED *[Signature]*
 County Engineer
 APPROVED *[Signature]*
 Civil Engineer of County
 Sanitation District No. 1
 CHECKED *[Signature]*
 Office of Civil Engineer, Reg. C.E.

Final C.K.T.I.P. 3/8/48