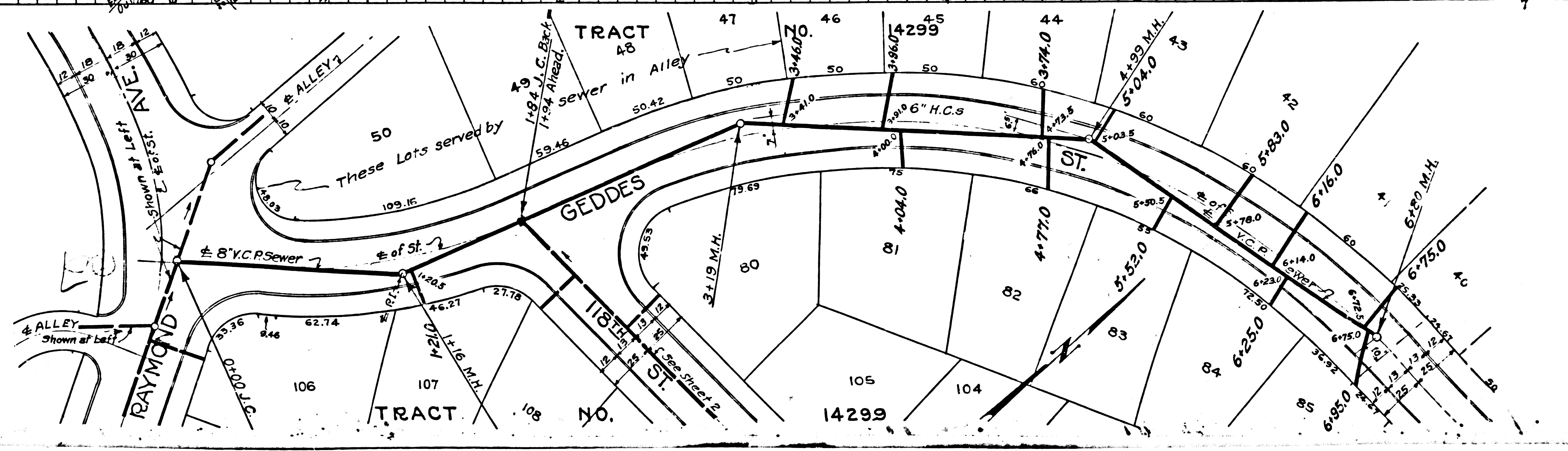
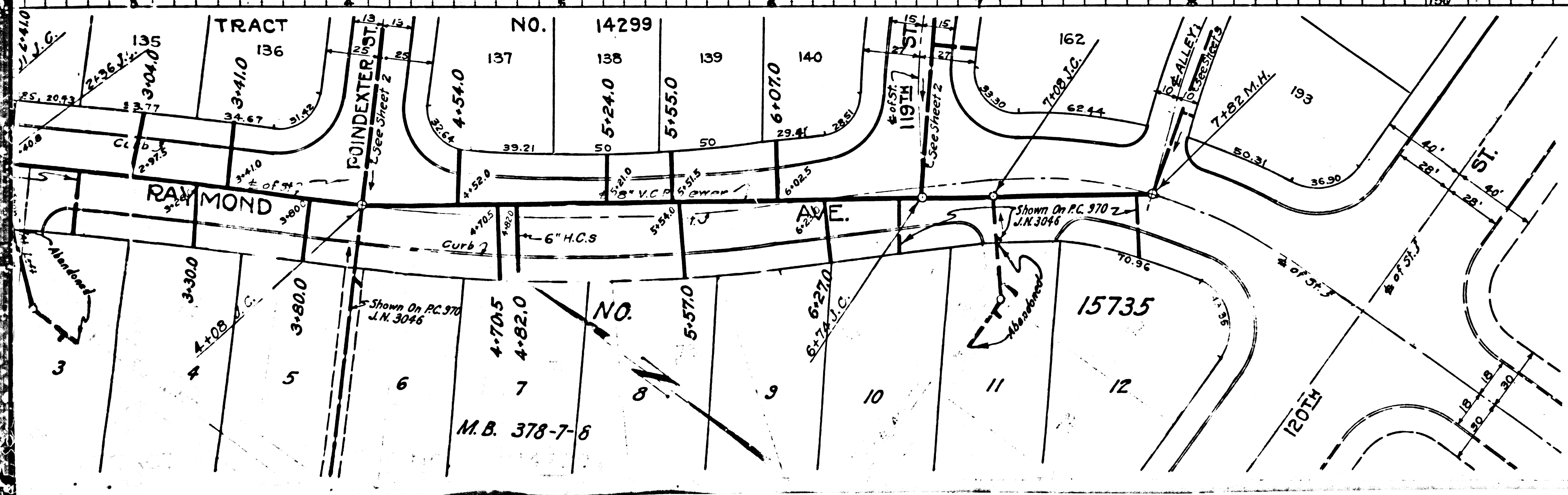
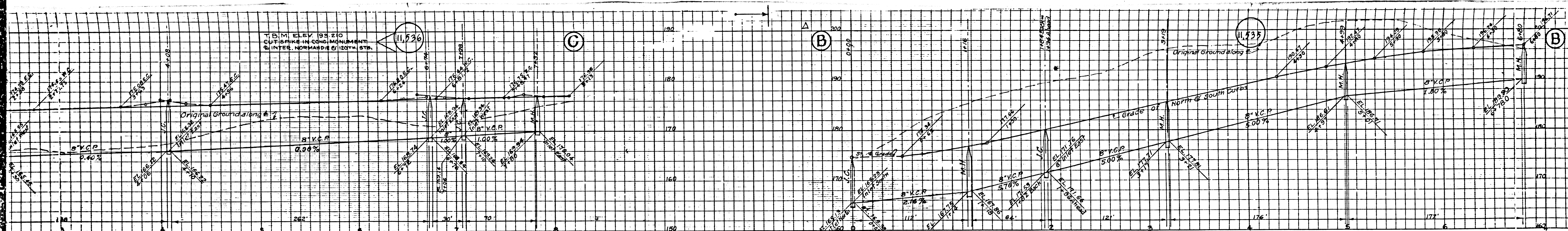
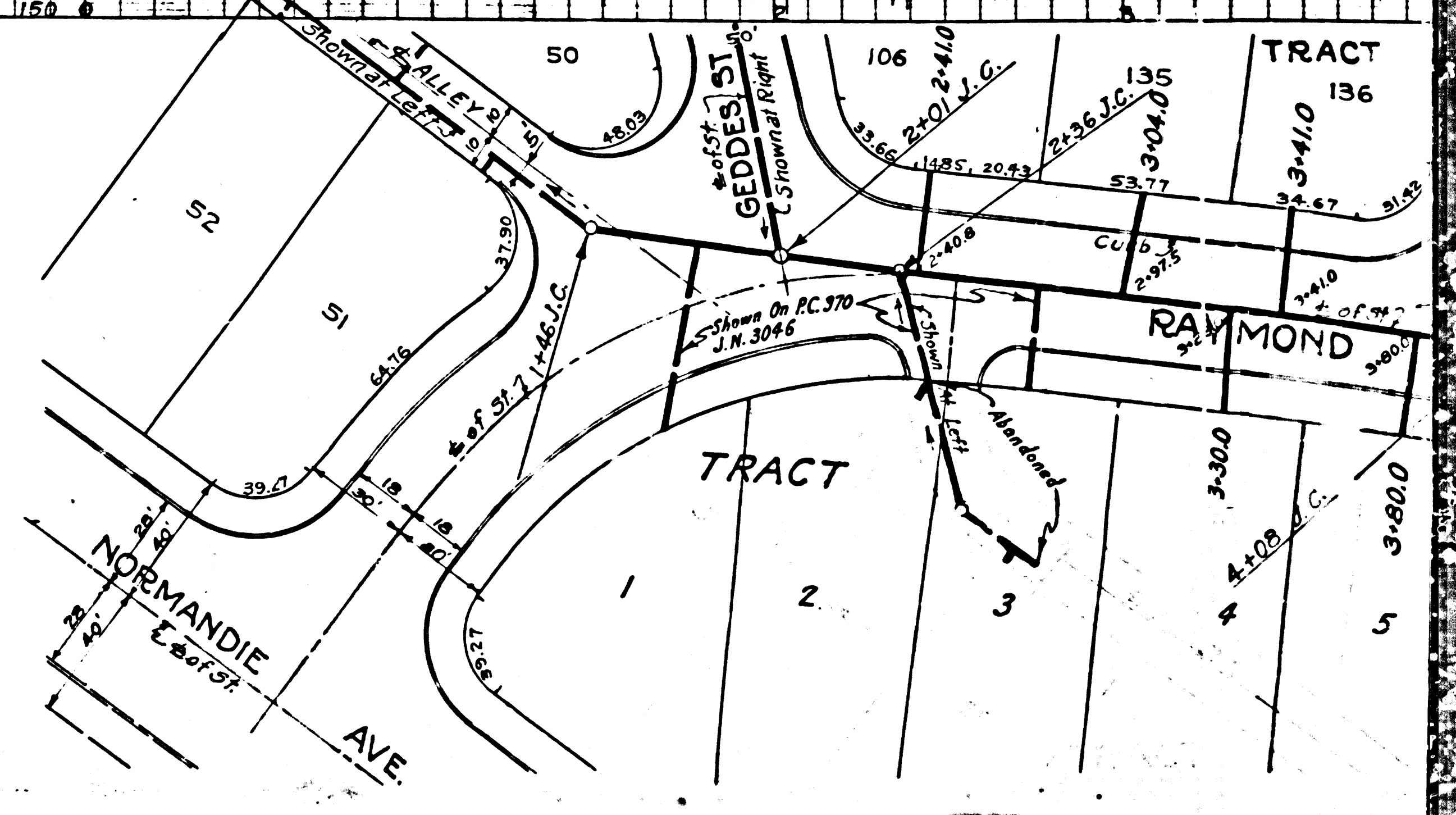
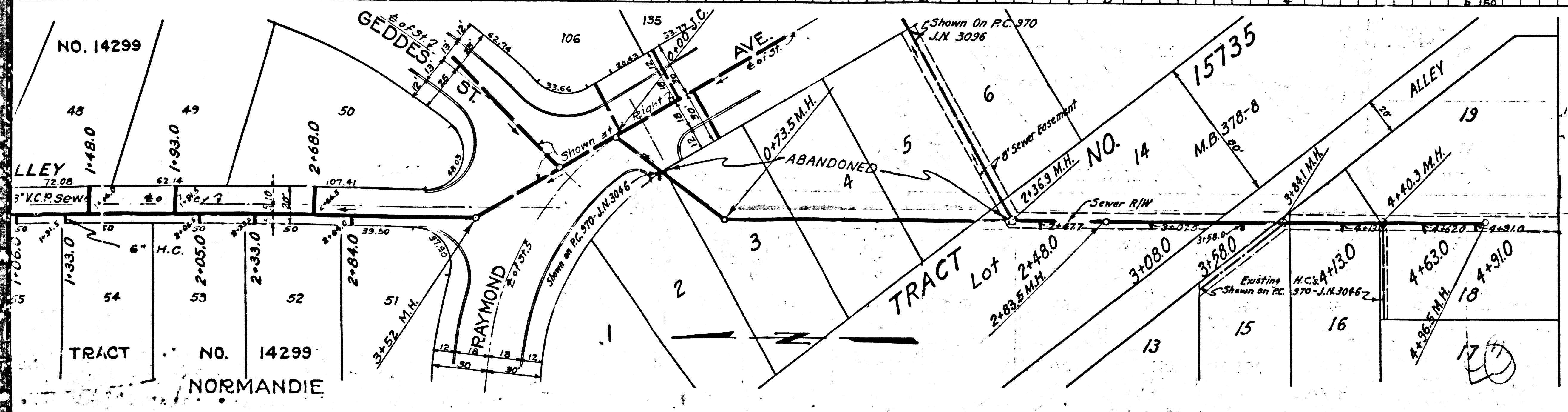
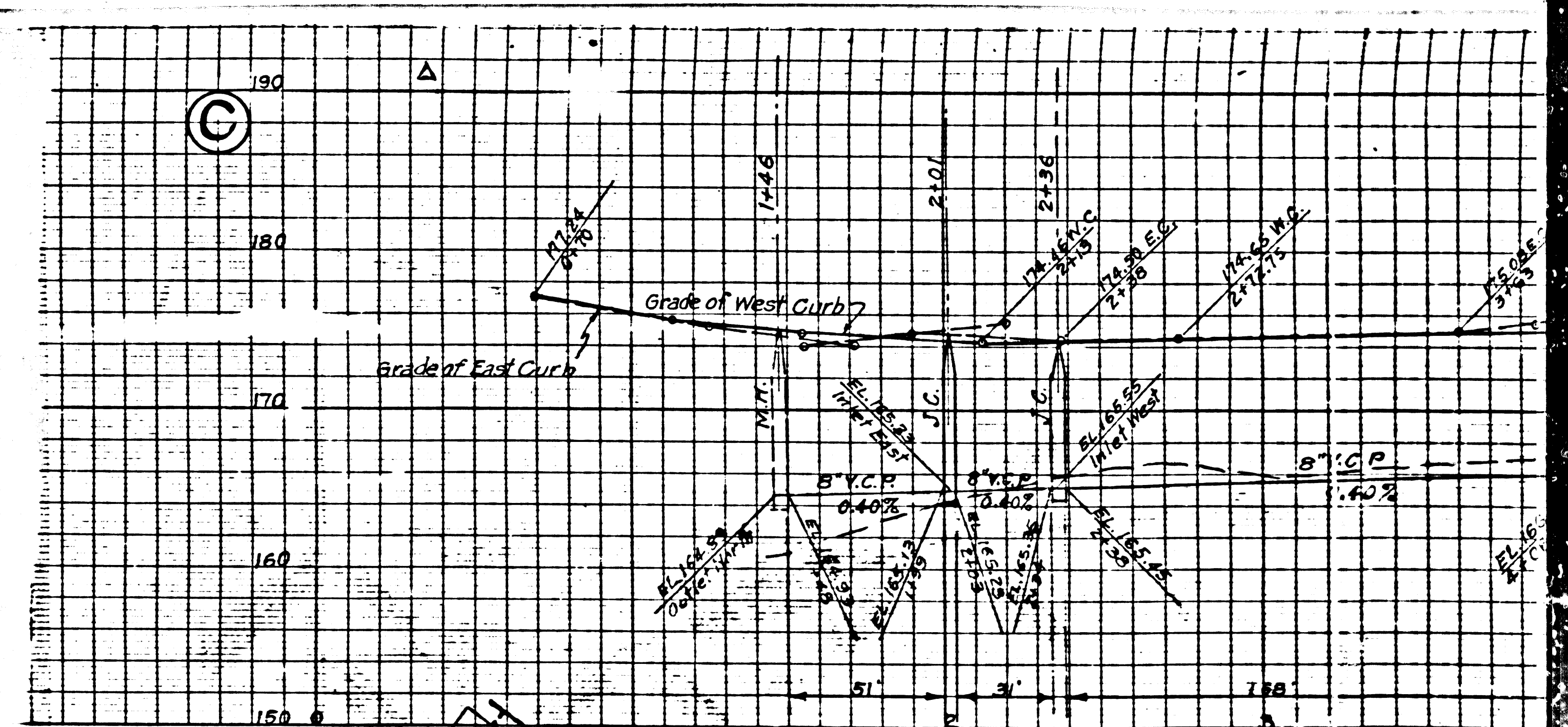
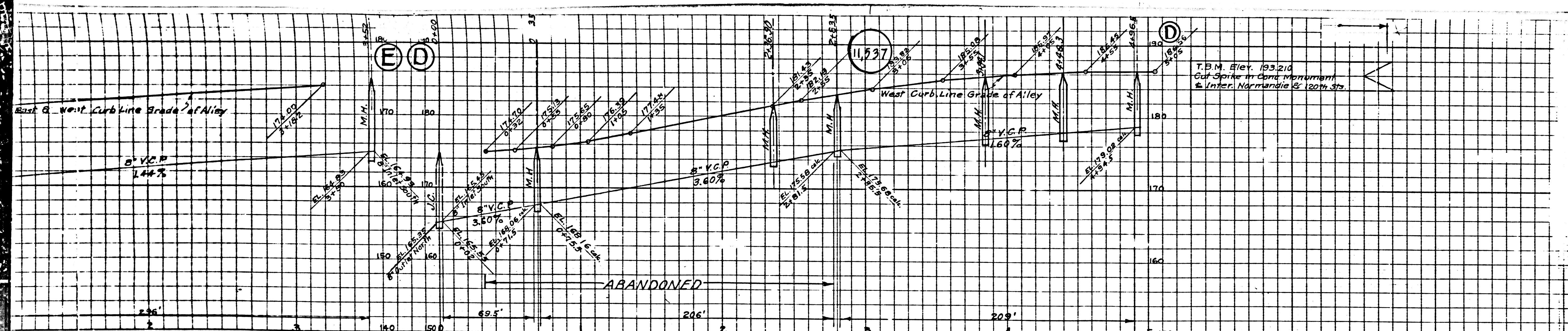


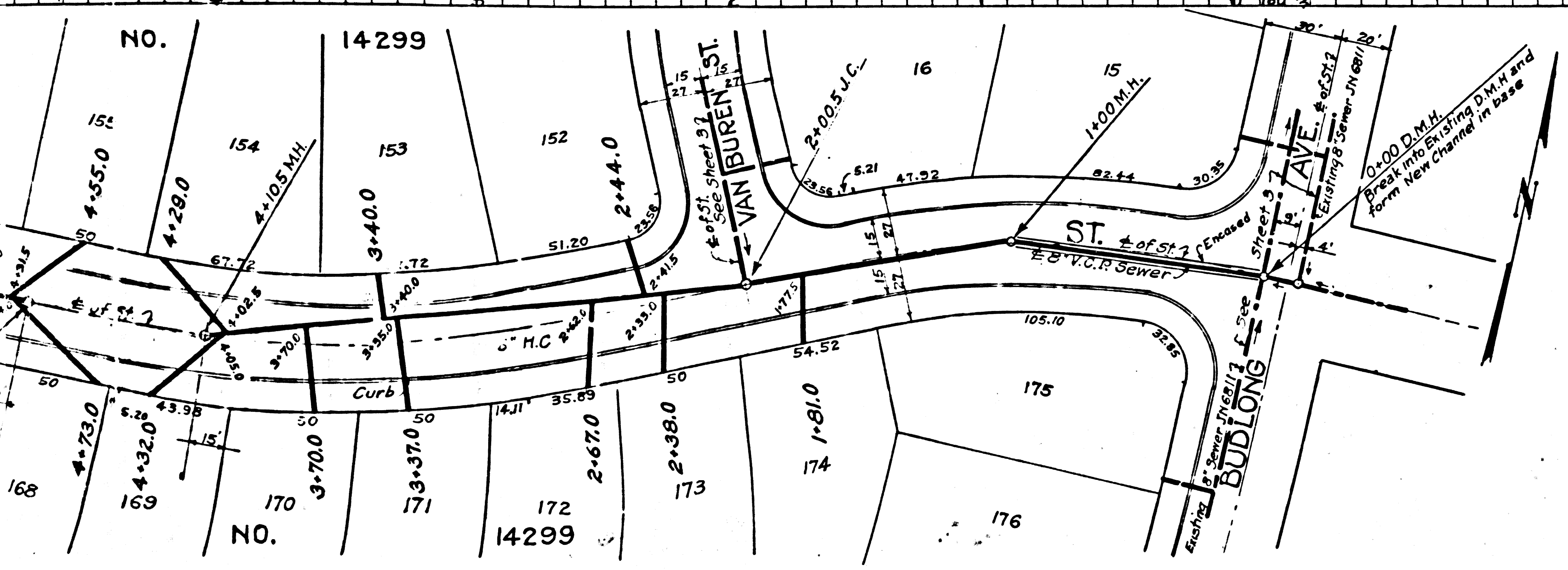
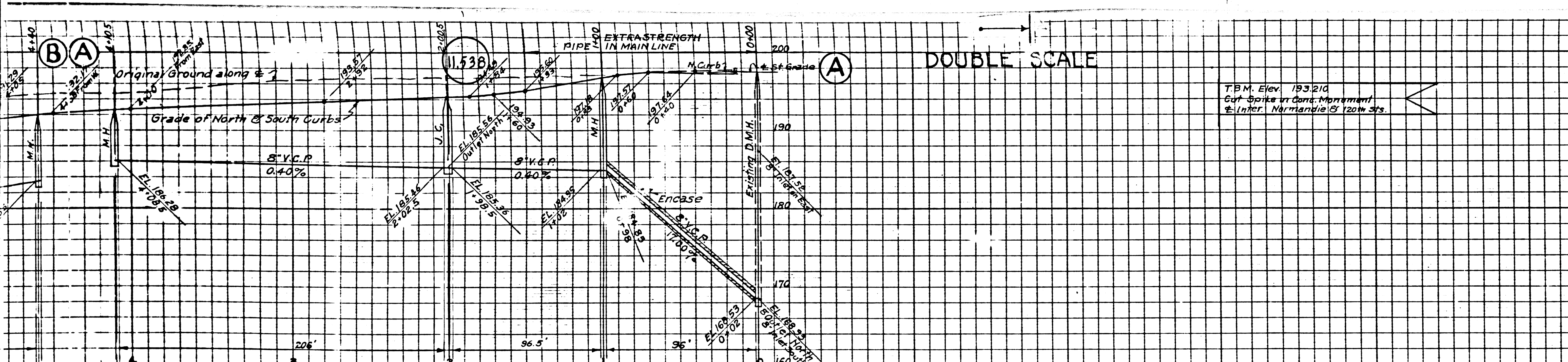
P.C. 676

④

Served by Sewer in Geddes St.
 TRACT NO. 14299
 ALLEY
 Existing 10" Manchester Ave. Pump Trunk Sewer San. Dist. No. 5
 0-033 V.C.P. 10' Sewer, pressure pipe for connection
 0-59.0
 0-57.0
 1-06.0
 1-33.0
 6" H.C.
 2-05.0
 2-33.0
 2-84.0
 34.52' M.H.
 TRACT NO. 14299
 NORMANDIE
 GEDDES ST.
 RAYMOND ST.
 ABANDONED
 0-73.5 M.H.
 1
 2
 3
 4
 5
 TRACT







DOUBLE SCALE

T.B.M. Elev. 193.210
 G.M. Spike in Concrete Monument
 E. Inter. Meridian 1920 W 513

PROFILE, ALIGNMENT AND GRADE OF
SANITARY SEWERS
 TO BE CONSTRUCTED IN
118TH ST.
 FROM GEDDES AVE. TO VAN BUREN AVE.
POINDEXTER ST.
 FROM RAYMOND AVE. TO VAN BUREN AVE.
119TH ST.
 FROM RAYMOND AVE. TO BUDLONG AVE.

PRIVATE CONTRACT NO. 676
 WS 26
 SHEET NO. 2 OF 3 SHEETS Dec. 10, 1947
 (DATE)

SCALE: VERT. 1" = 5'
 HORIZ. 1" = 40'

PREPARED IN THE OFFICES OF
HOLMES & NARVER

804 S. FIGUEROA ST.
 LOS ANGELES, CALIF.
 BY *H. T. Rollins*
 REG. C.E. NO. 6063

FOR LEGEND
 SEE PLAN NO. S-3-64

For Construction Notes See Sheet 1

COUNTY OF LOS ANGELES, CALIFORNIA

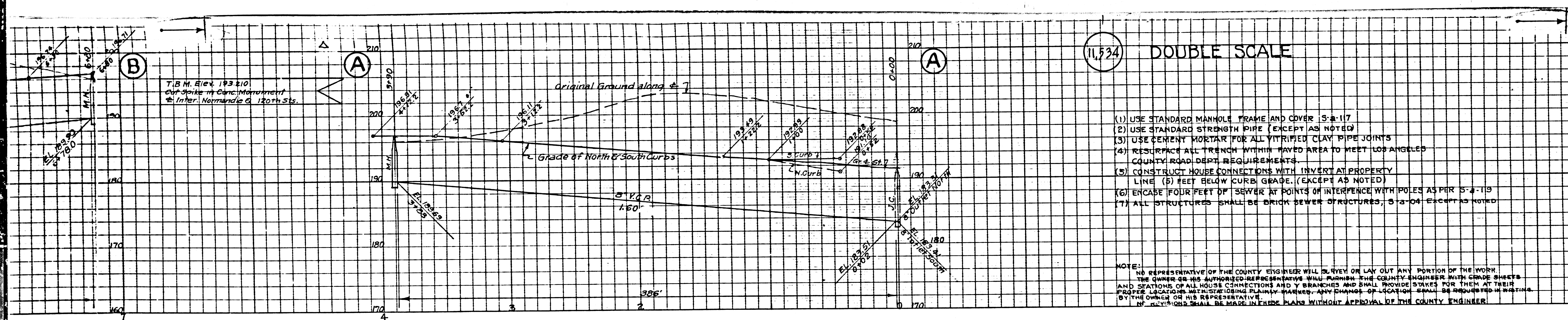
APPROVED *E. J. ...*
 COUNTY ENGINEER

APPROVED *...*
 COUNTY ENGINEER OF COUNTY
 SANITATION DISTRICT NO. 5

CHECKED BY *...* Dec. 11, 1947
 OFFICE OF COUNTY ENGINEER, REG. C.E. NO. 6212

checked by ... 10-20-49

20



11,524 DOUBLE SCALE

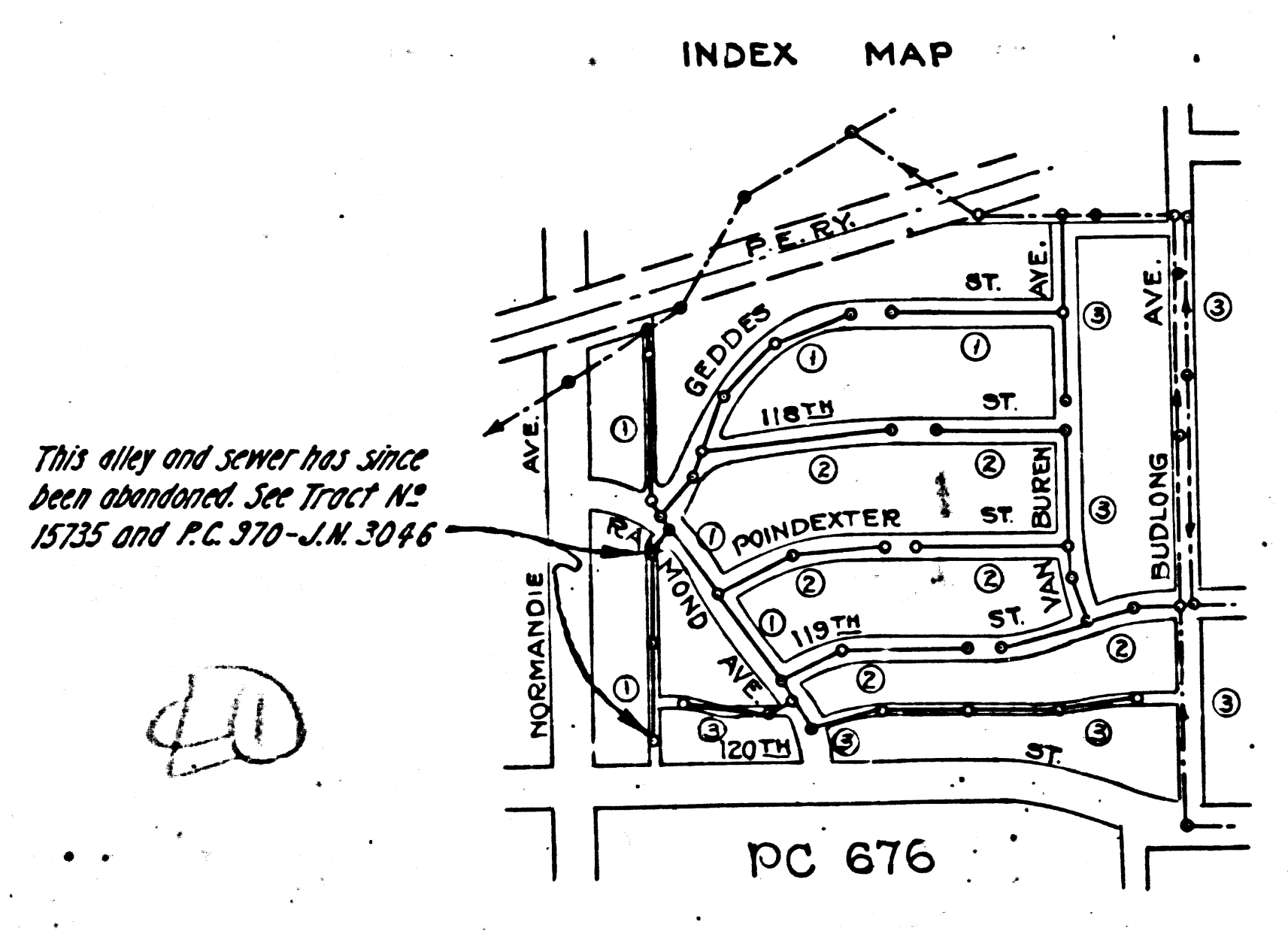
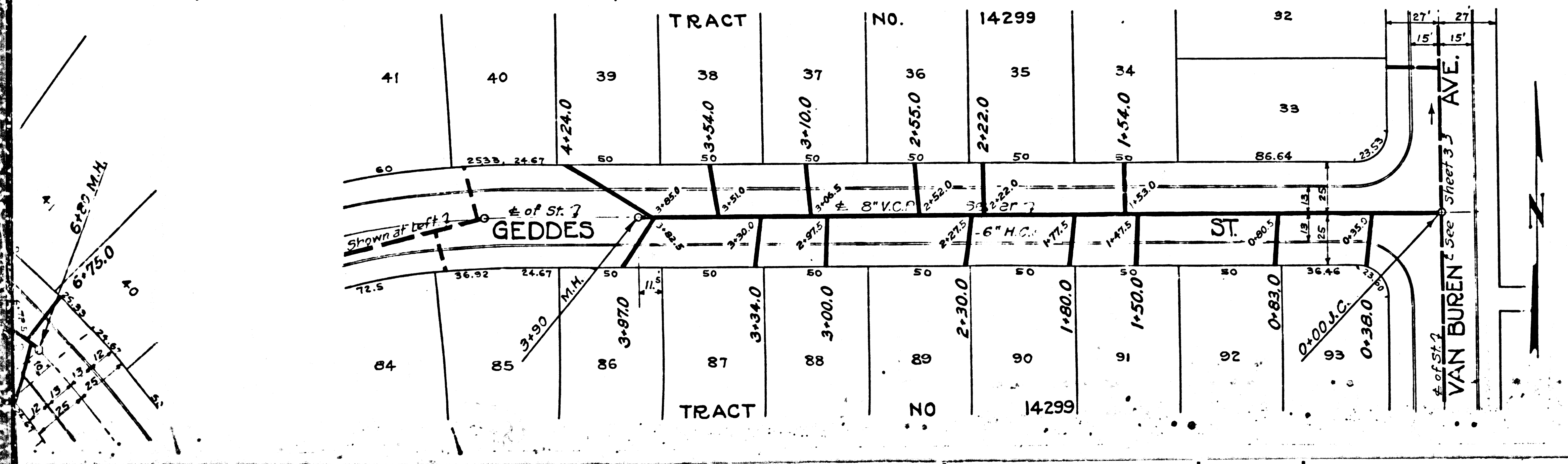
PROFILE, ALIGNMENT AND GRADE OF
SANITARY SEWERS
 TO BE CONSTRUCTED IN
ALLEY E. OF NORMANDIE AVENUE,
 FROM ALLEY NORTH OF RAYMOND AVE. TO 120TH STREET.
RAYMOND AVE.
 FROM ALLEY E. OF NORMANDIE AVE. TO 120TH STREET
GEDDES AVE.
 FROM RAYMOND AVE. TO VAN BUREN AVE.

- (1) USE STANDARD MANHOLE FRAME AND COVER 15" x 17"
- (2) USE STANDARD STRENGTH PIPE (EXCEPT AS NOTED)
- (3) USE CEMENT MORTAR FOR ALL VITRIFIED CLAY PIPE JOINTS
- (4) RESURFACE ALL TRENCH WITHIN PAVED AREA TO MEET LOS ANGELES COUNTY ROAD DEPT. REQUIREMENTS
- (5) CONSTRUCT HOUSE CONNECTIONS WITH INVERT AT PROPERTY LINE (5) FEET BELOW CURB GRADE. (EXCEPT AS NOTED)
- (6) ERASE FOUR FEET OF SEWER AT POINTS OF INTERFERENCE WITH POLES AS PER 5-a-19
- (7) ALL STRUCTURES SHALL BE BRICK SEWER STRUCTURES, 3'-0" x 3'-0" EXCEPT AS NOTED

PRIVATE CONTRACT NO. 676
 WS 26
 SHEET NO. 1 OF 3 SHEETS DEC. 10, 1947
 (DATE)

NOTE: NO REPRESENTATIVE OF THE COUNTY ENGINEER WILL SURVEY OR LAY OUT ANY PORTION OF THE WORK. THE OWNER OR HIS AUTHORIZED REPRESENTATIVE WILL FURNISH THE COUNTY ENGINEER WITH GRADE SHEETS AND STATIONS OF ALL HOUSE CONNECTIONS AND Y BRANCHES AND SHALL PROVIDE SPOKES FOR THEM AT THEIR PROPER LOCATIONS WITH SIGHTING PLUMBER MARKERS—ANY CHANGES OF LOCATION SHALL BE INDICATED IN WRITING BY THE OWNER OR HIS REPRESENTATIVE. NO CHANGES SHALL BE MADE TO THESE PLANS WITHOUT APPROVAL BY THE COUNTY ENGINEER.

PREPARED IN THE OFFICES OF
HOLMES & NARVER
 824 S. FIGUEROA ST.
 LOS ANGELES, CALIFORNIA
 BY S.T. Roblin REG. C.E. NO. 6053



This alley and sewer has since been abandoned. See Tract No. 15235 and P.C. 370-J.M. 3046

FOR LEGEND
 SEE PLAN NO. 5-a-64

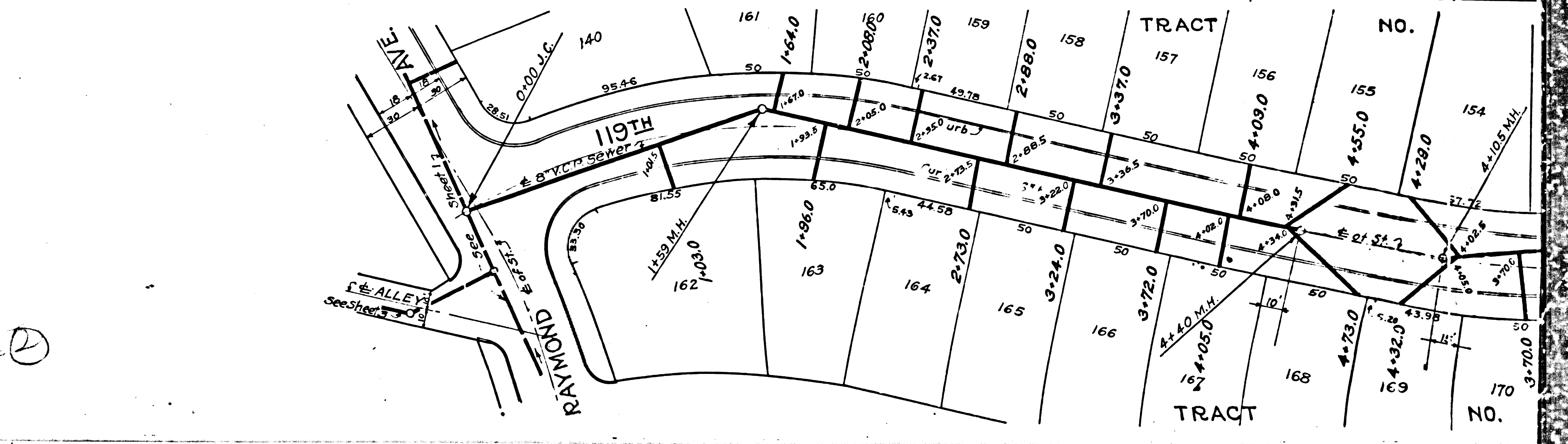
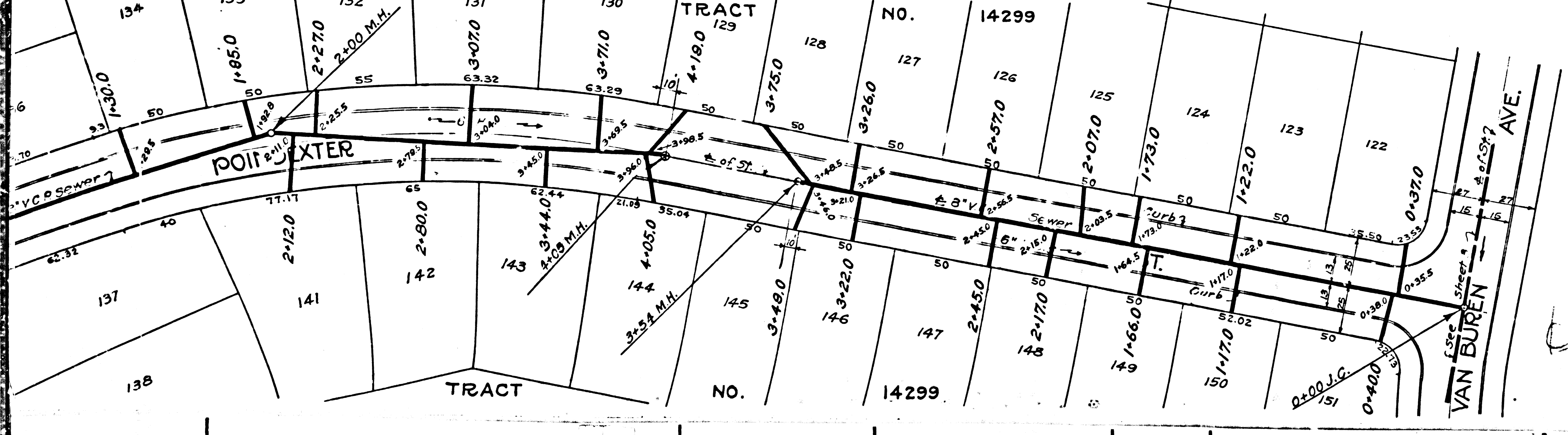
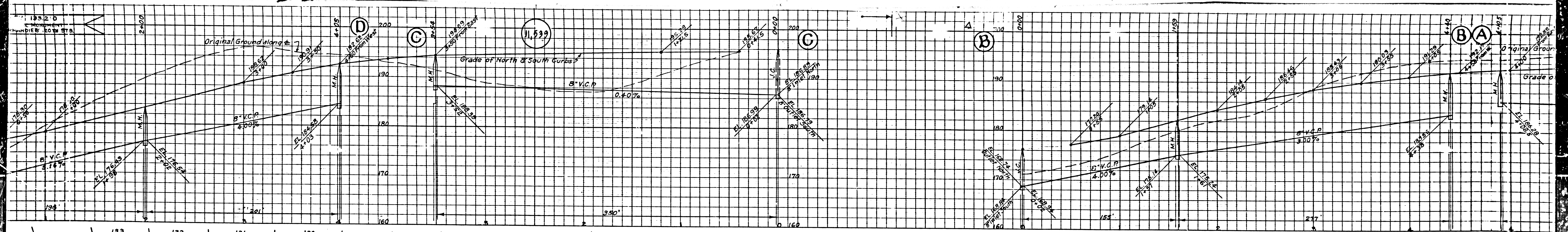
NOTE: GRADES TO WHICH THIS IMPROVEMENT IS TO BE CONSTRUCTED ARE SHOWN ON PLANS AND PROFILE. GRADE POINTS FOR TOP OF CURB, CENTER LINE OF STREET ARE SHOWN ON PROFILE. AT ALL POINTS BETWEEN DESIGNATED POINTS THE GRADE SHALL BE ESTABLISHED SO AS TO CONFORM TO A STRAIGHT LINE DRAWN BETWEEN SAID DESIGNATED POINTS. ELEVATIONS ARE IN FEET ABOVE U.S.S. DATUM OR MEAN SEA LEVEL. THIS DRAWING AND THE DATA HEREON ARE HEREBY MADE A PART OF THE SPECIFICATIONS. WORK SHALL BE CONSTRUCTED ACCORDING TO THE SPECIFICATIONS ON FILE IN THE OFFICE OF THE COUNTY ENGINEER AND SHALL BE PROSECUTED ONLY IN THE PRESENCE OF THE COUNTY ENGINEER. BEFORE WORK CAN BE STARTED, THE CONTRACTOR MUST OBTAIN A PERMIT TO EXCAVATE IN COUNTY STREETS FROM THE L.A. COUNTY ROAD DEPT. HALL OF RECORDS, AND MAKE A DEPOSIT WITH THE COUNTY ENGINEER, 700 FASHION LEAGUE BLDG. SUFFICIENT TO COVER THE COST OF CONSTRUCTION INSPECTION AND RECORD PLANS.

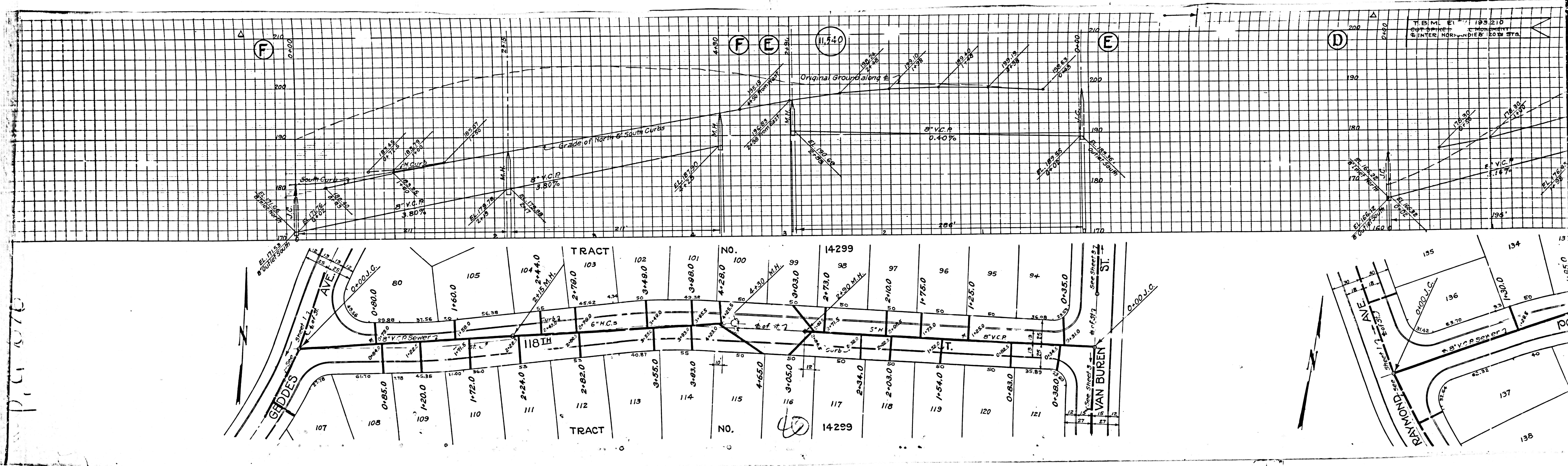
COUNTY OF LOS ANGELES, CALIFORNIA

APPROVED [Signature]
 COUNTY ENGINEER

APPROVED [Signature]
 CHIEF ENGINEER OF COUNTY SANITATION DIST. NO. 5

CHECKED BY [Signature] Dec. 11, 1947
 OFFICE OF COUNTY ENGINEER R.S. 1106 & 1122

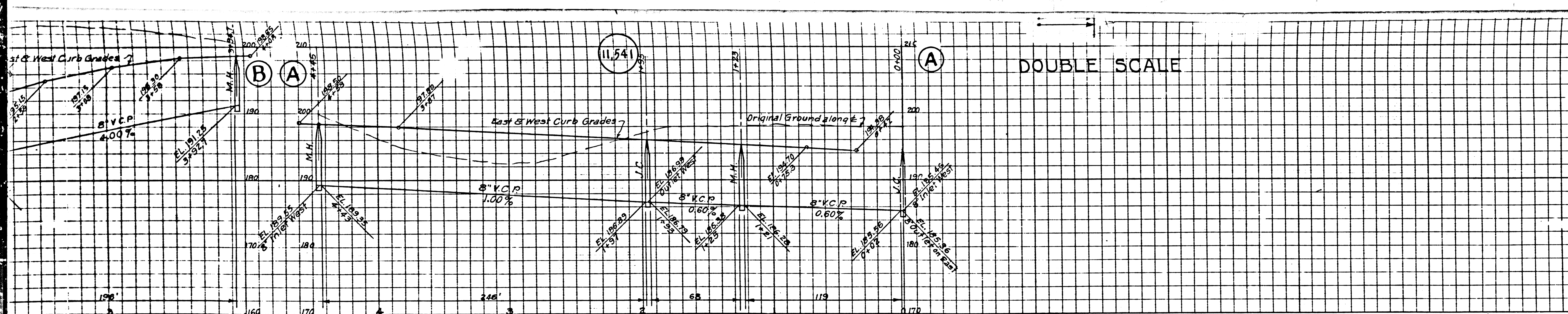




P.C. 1070

M

N



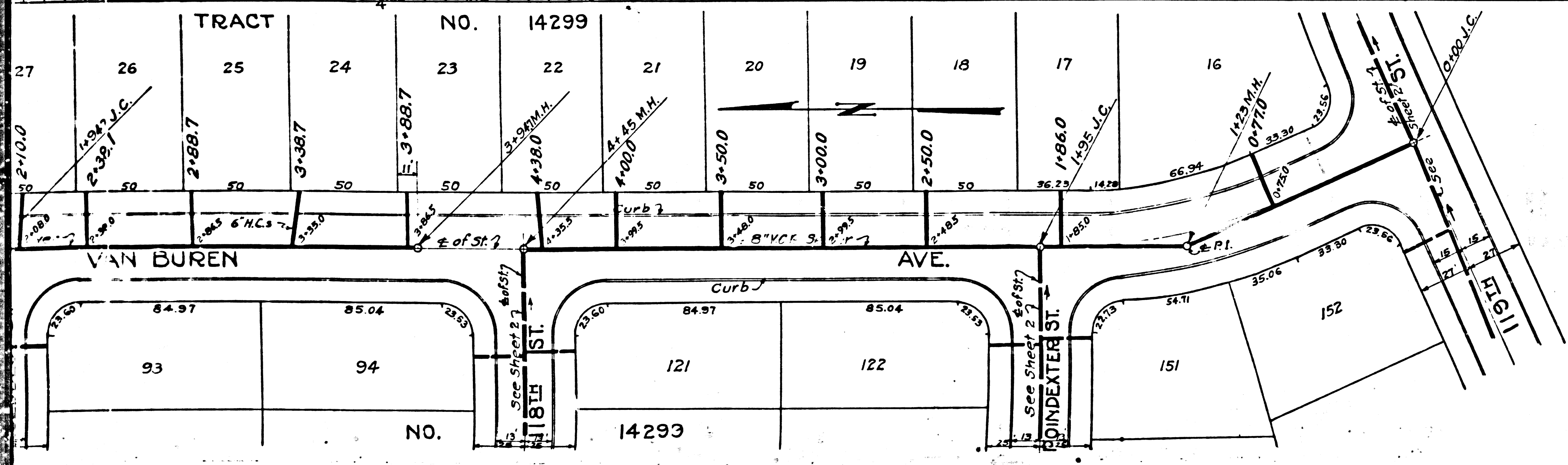
PROFILE, ALIGNMENT AND GRADE OF
SANITARY SEWERS
 TO BE CONSTRUCTED IN
ALLEY N. OF 120TH STREET
 FROM ALLEY EAST OF NORMANDIE AVE. TO BUDLONG AVE.
BUDLONG AVE.
 FROM BEDDES AVE. TO 120TH ST.
VAN BUREN AVE.
 FROM BEDDES AVE. TO 119TH ST.

PRIVATE CONTRACT NO. 676
 WS 26
 SHEET NO. 3 OF 3 SHEETS
 DEC. 10, 1947
 (DATE)
 PREPARED IN THE OFFICES OF

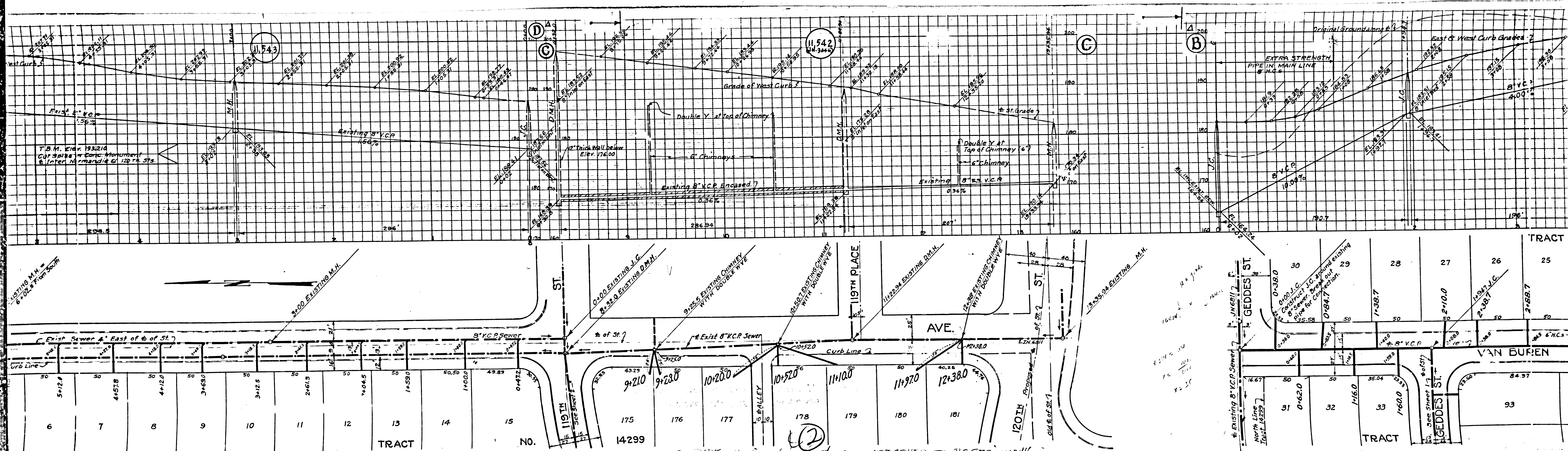
HOLMES & NARVER
 824 S. FIGUEROA STREET
 LOS ANGELES, CALIFORNIA.
 BY *D. J. Kell*

FOR LEGEND
 SEE PLAN NO. S-4-64
 FOR CONSTRUCTION NOTES, SEE SHEET 1

COUNTY OF LOS ANGELES, CALIFORNIA.
 APPROVED *Chambers*
 COUNTY ENGINEER
 APPROVED *Carroll*
 CIVIL ENGINEER, COUNTY
 SANITATION DISTRICT NO. 8
 CHECKED BY *L. J. ...* Dec. 11, 1947
 OFFICE OF COUNTY ENGINEER, S.E.C.C. EMP. 312



40



11,543

11,542
N. 344.5

EXISTING M.H. =
6" DIA. # FROM SOUTH

5+12.0
4+57.8
4+12.0
3+68.0
3+12.5
2+61.5
2+04.5
1+59.0
1+00.0
49.89
0+47.2

6
7
8
9
10
11
12
13
14
15

TRACT

NO.

175
176
177
178
179
180
181

14299

119TH PLACE

AVE.

120TH ST

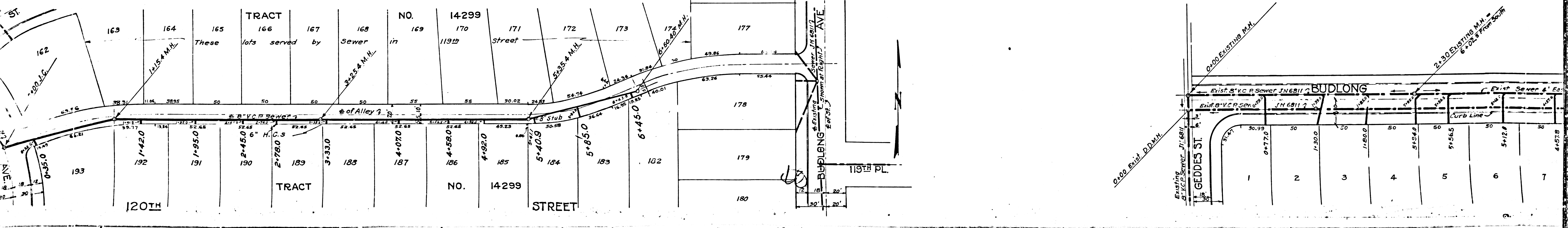
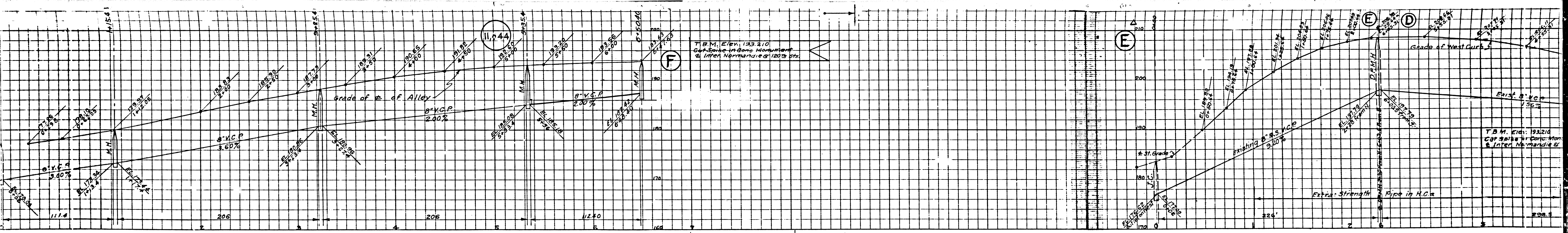
VAN BUREN

TRACT

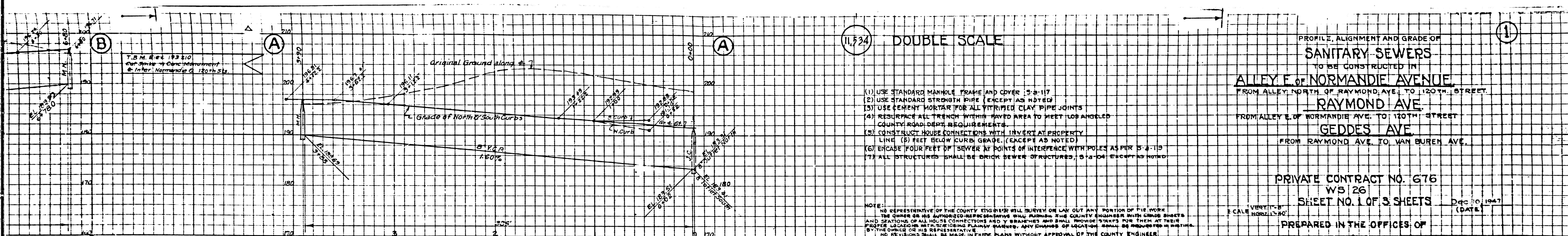
TRACT

C. JACK Negative - to be removed AND ATTACHED TO P.C. 970-JN 3046

M.S.



TRACT NO.	TRACT NO.	TRACT NO.	TRACT NO.	TRACT NO.	TRACT NO.	TRACT NO.	TRACT NO.
162	163	164	165	166	167	168	169
170	171	172	173	174	175	176	177
178	179	180	181	182	183	184	185
186	187	188	189	190	191	192	193



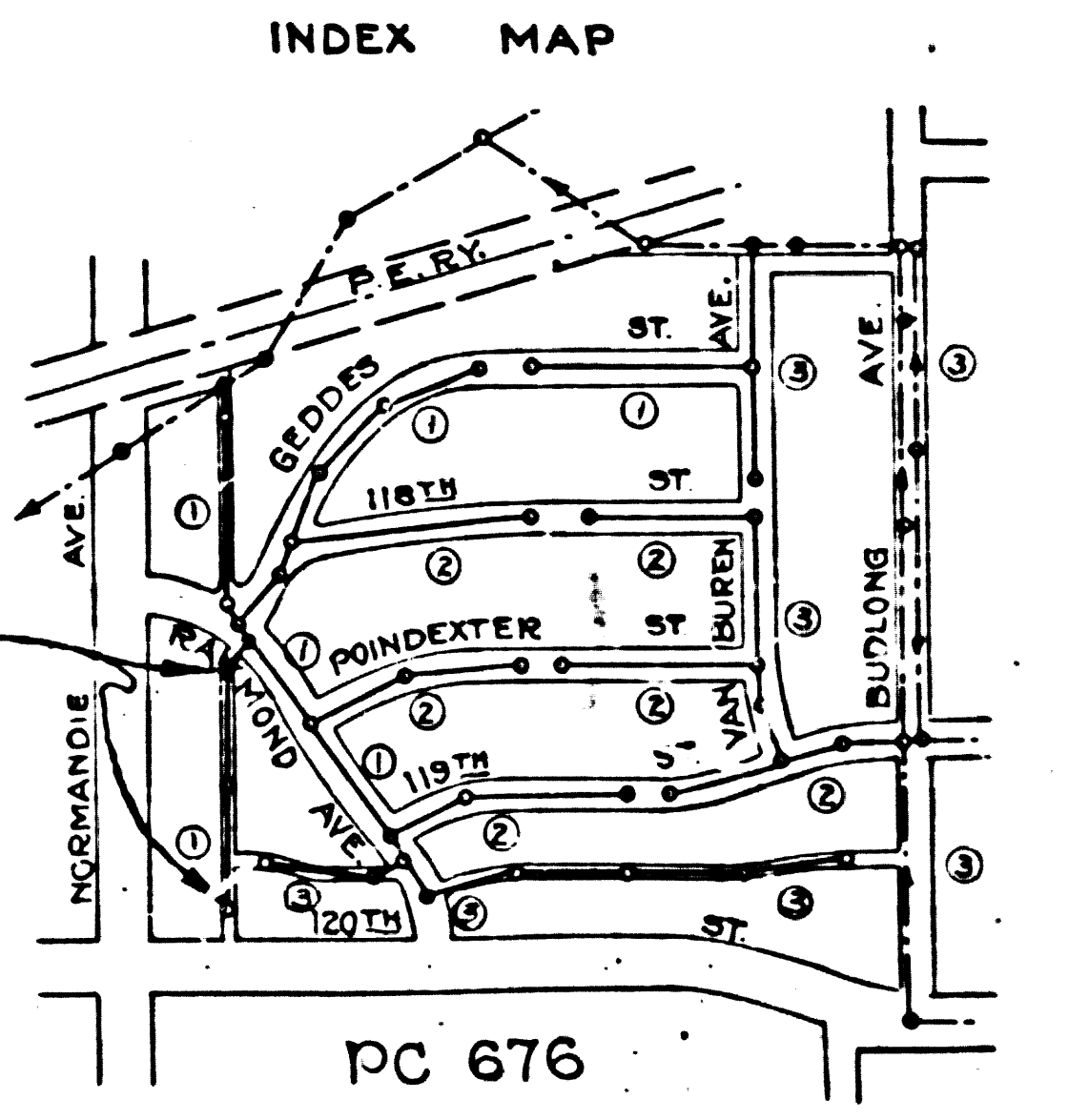
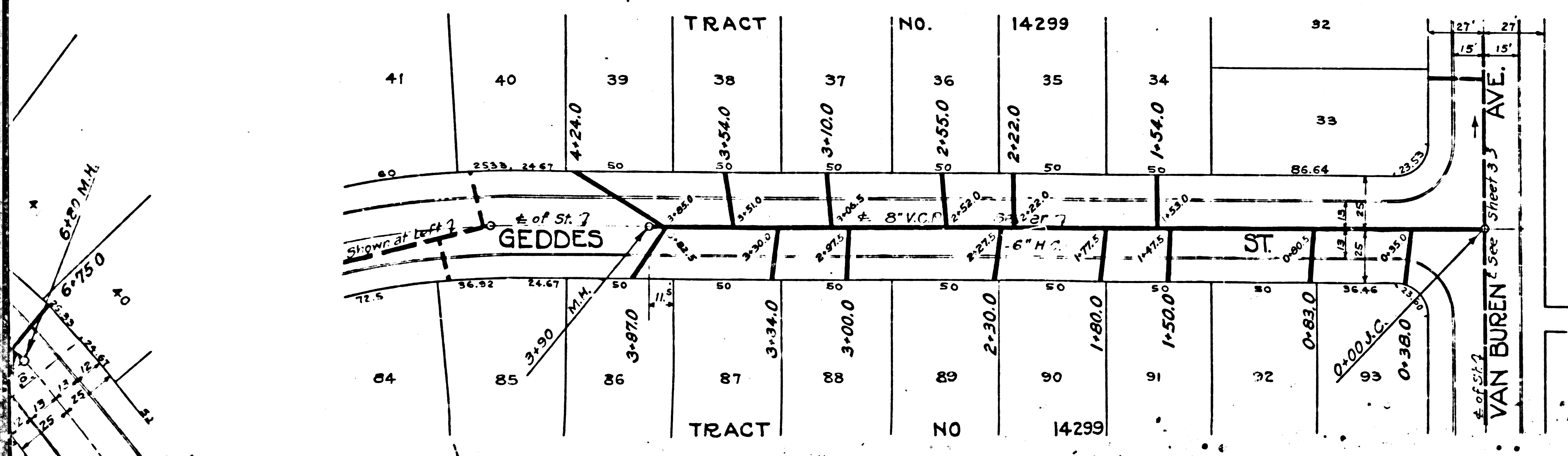
11,724 DOUBLE SCALE

PROFILE, ALIGNMENT AND GRADE OF
SANITARY SEWERS
 TO BE CONSTRUCTED IN
ALLEY F OF NORMANDIE AVENUE
 FROM ALLEY NORTH OF RAYMOND AVE. TO 120TH STREET
RAYMOND AVE.
 FROM ALLEY E OF NORMANDIE AVE. TO 120TH STREET
GEDDES AVE.
 FROM RAYMOND AVE. TO VAN BUREN AVE.

- (1) USE STANDARD MANHOLE FRAME AND COVER, S-3-117
- (2) USE STANDARD STRENGTH PIPE (EXCEPT AS NOTED)
- (3) USE CEMENT MORTAR FOR ALL VITRIFIED CLAY PIPE JOINTS
- (4) RESURFACE ALL TRENCH WITHIN PAVED AREA TO MEET LOS ANGELES COUNTY ROAD DEPT. REQUIREMENTS.
- (5) CONSTRUCT HOUSE CONNECTIONS WITH INVERT AT PROPERTY LINE (5) FEET BELOW CURB GRADE. (EXCEPT AS NOTED)
- (6) ENCASE FOUR FEET OF SEWER AT POINTS OF INTERFERENCE WITH POLES AS PER S-3-119
- (7) ALL STRUCTURES SHALL BE BRICK SEWER STRUCTURES, S-3-04 EXCEPT AS NOTED

PRIVATE CONTRACT NO. 676
 WS 26
 SHEET NO. 1 OF 3 SHEETS

PREPARED IN THE OFFICES OF
HOLMES & NARVER
 824 S. FIGUEROA ST.
 LOS ANGELES, CALIFORNIA
 BY *W.T. Rollins* REG. C.E. NO. 6065



FOR LEGEND
 SEE PLAN NO. S-2-64

NOTE:
 GRADES TO WHICH THIS IMPROVEMENT IS TO BE CONSTRUCTED ARE SHOWN ON PLANS AND PROFILE. GRADE POINTS FOR TOP OF CURB, CENTER LINE OF STREET ARE SHOWN ON PROFILE AT ALL POINTS BETWEEN DESIGNATED POINTS. THE GRADE SHALL BE ESTABLISHED SO AS TO CONFORM TO A STRAIGHT LINE DRAWN BETWEEN SAID DESIGNATED POINTS. ELEVATIONS ARE IN FEET ABOVE U.S. S. DATUM OR MEAN SEA LEVEL.
 THIS DRAWING AND THE DATA HEREON ARE HEREBY MADE A PART OF THE SPECIFICATIONS. WORK SHALL BE CONSTRUCTED ACCORDING TO THE SPECIFICATIONS ON FILE IN THE OFFICE OF THE COUNTY ENGINEER AND SHALL BE PROSECUTED ONLY IN THE PRESENCE OF THE COUNTY ENGINEER. BEFORE WORK CAN BE STARTED, THE CONTRACTOR MUST OBTAIN A PERMIT TO EXCAVATE IN COUNTY STREETS FROM THE L.A. COUNTY ROAD DEPT. HALL OF RECORDS, AND MAKE A DEPOSIT WITH THE COUNTY ENGINEER, 700 MASHION SQUARE BUILDING, SUFFICIENT TO COVER THE COST OF CONSTRUCTION INSPECTION AND RECORD PLANS.

COUNTY OF LOS ANGELES, CALIFORNIA

APPROVED *W. J. ...*
 COUNTY ENGINEER

APPROVED *W. J. ...*
 CHIEF ENGINEER OF COUNTY SANITATION DIST. NO. 5

CHECKED BY *W. J. ...* Dec 11, 1947
 OFFICE OF COUNTY ENGINEER, LOS ANGELES