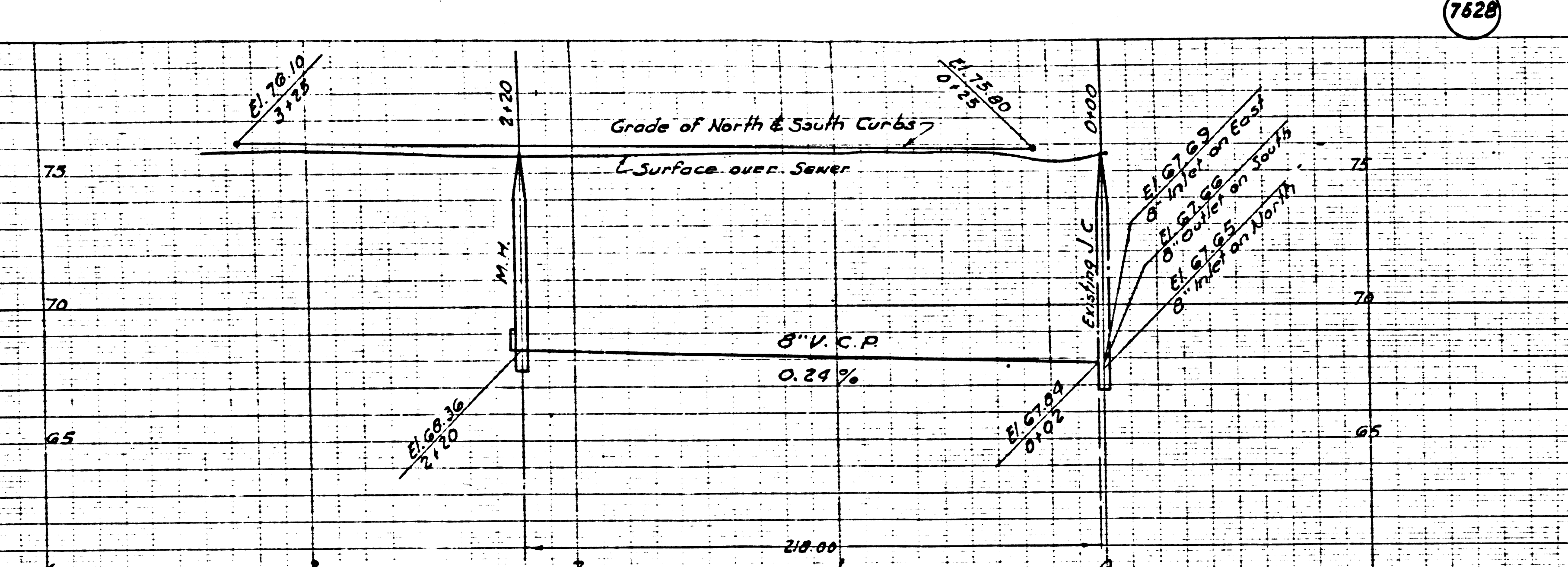


1-524  
762B



1. Use Standard Manhole Frames and Covers, S-a-117
2. Use Standard Strength Pipe
3. Use Cement Mortar for all Vitrified Clay Pipe Joints.
4. Resurface trench within Paved area to meet L.A. County Road Dept. requirements
5. Encase four feet of Sewer at points of interference with Poles as per S-a-119
6. All Structures shall be brick Sewer Structures, S-a-109

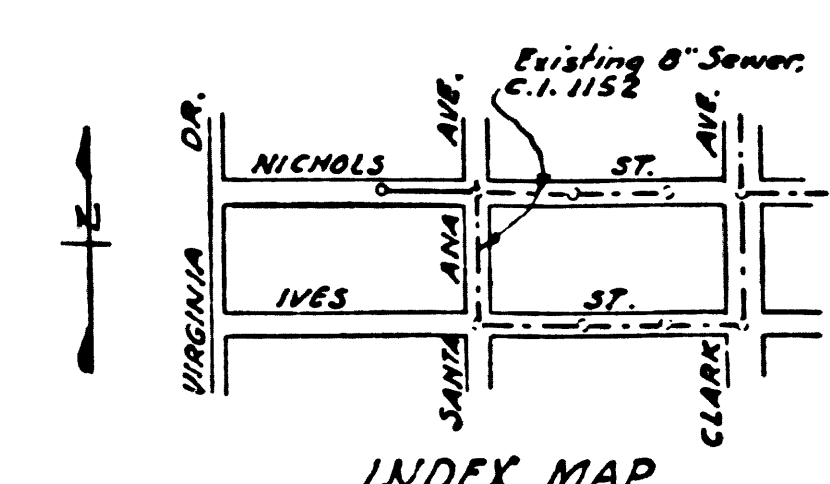
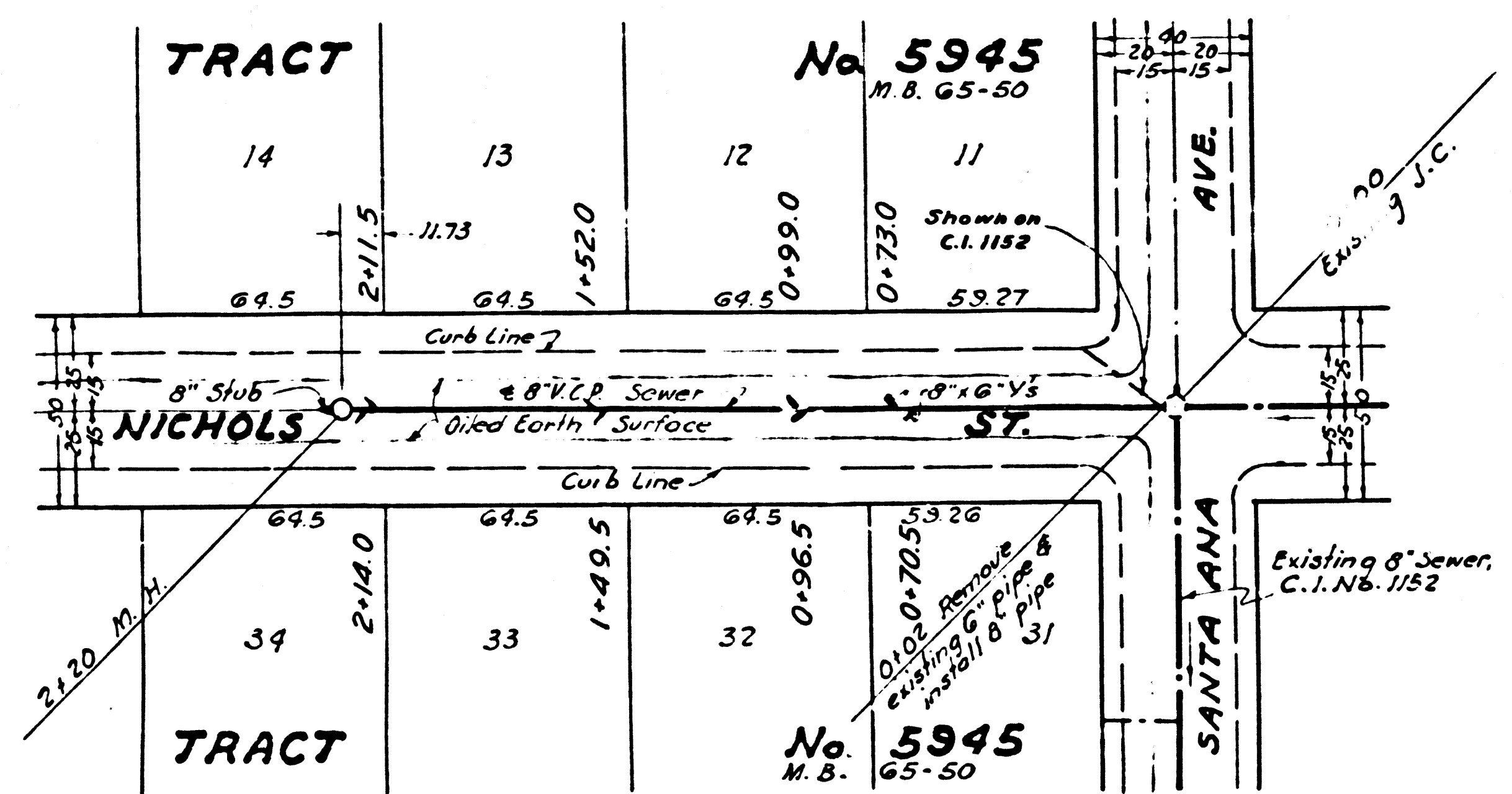
NOTE -  
Elevations are based on L.A. County Bench Mark N.M. 48, Elev. = 76.456, as per C.S. B. 1154-13. A bench spike is south of walk to House #40, at N.E. corner of Santa Ana Ave. & Nichols St.

NOTE -  
No representative of the County Engineer will survey or lay out any portion of the work. The owner or his authorized representative shall furnish the County Engineer with Grade Sheets and Stationing for all main lines, branches and all manholes. All manholes shall be located at their proper locations with stationing plainly marked. Any change of location shall be reported in writing by the owner or his representative. No revisions shall be made in these Plans without approval of the County Engineer.

PROFILE, ALIGNMENT AND GRADE OF  
**SANITARY SEWERS**  
TO BE CONSTRUCTED IN  
**NICHOLS STREET**  
BETWEEN SANTA ANA AVE & POINT 220 FT. WESTERLY

PRIVATE CONTRACT NO. 686  
W.S. 33  
SHEET 1 OF 1 SHEET

Scale: Vert. 1" = 4'  
Plan. 1" = 40'  
Nov. 1947  
PREPARED IN THE OFFICES OF  
**GEORGE G. BLACKMER**  
by *George G. Blackmer*  
Reg. C.E. No. 1241



FOR LEGEND  
See Plan No. S-a-61

NOTE:  
Grades to which this improvement is to be constructed are shown on Plan and Profile. Grade points for top of curb, gutter line of streets or center line of alley are shown by circles on Profile. All points between designated points the grade shall be established so as to conform to a straight line drawn between said designated points. Elevations are in feet above U.S.G.S. Datum or Mean Sea Level.  
This drawing and the data hereon are hereby made a part of the specifications. Work shall be constructed according to specifications on file in the office of the County Engineer and shall be prosecuted with in the presence of the County Engineer. Before work can be started, the Contractor must obtain a permit to excavate in County streets from the L.A. County Road Dept. 1104 Hall of Records and make a deposit with the County Engineer, 700 Fashion League Building, sufficient to cover the cost of Construction Inspection and Record Plans.

COUNTY OF LOS ANGELES, CALIFORNIA

APPROVED *George G. Blackmer*  
County Engineer

APPROVED *John J. [Signature]*  
Chief Engineer of County  
Sanitation District No. 2

CHECKED *J.D. [Signature]* Nov. 25, 1947  
Office of County Engineer, Reg. C.E. No. 6322

Final Ck. T.P. 1/20/48

50 650