

1. USE STANDARD MANHOLE FRAMES AND COVERS PER PLAN S-a-617.
  2. USE STANDARD STRENGTH PIPE EXCEPT AS NOTED.
  3. USE CEMENT MORTAR FOR ALL UNGLAZED CLAY PIPE JOINTS.
  4. RESURFACE ALL TRENCH WITHIN PAVED AREA TO MEET LOS ANGELES COUNTY ROAD DEPT. REQUIREMENTS.
  5. CONSTRUCT HOUSE CONNECTIONS WITH INVERT AT PROPERTY LINE FIVE FEET BELOW GRADE OF CENTER LINE OF EASEMENT EXCEPT AS NOTED.
  6. ENCASE FOUR FEET OF SEWER AT POINTS OF INTERFERENCE WITH POLES AS PER S-B-118.
  7. ALL STRUCTURES SHALL BE BRICK SEWER STRUCTURES S.O. 10A.
  8. ALL MANHOLES TO EXTEND 6\"/>
- NOTE:**  
 NO REPRESENTATIVE OF THE COUNTY ENGINEER WILL SURVEY OR LAY OUT ANY PORTION OF THE WORK.  
 THE OWNER OR HIS AUTHORIZED REPRESENTATIVE SHALL FURNISH THE COUNTY ENGINEER WITH GRADE SHEETS AND STATIONS OF ALL HOUSE CONNECTIONS AND Y BRANCHES, AND SHALL PROVIDE MARKS FOR THEM AT THEIR PROPER LOCATIONS WITH STATIONING PLAINLY MARKED.  
 ANY CHANGE OF LOCATION SHALL BE REQUESTED IN WRITING BY THE OWNER OR HIS REPRESENTATIVE.  
 NO REVISIONS SHALL BE MADE IN THESE PLANS WITHOUT APPROVAL OF THE COUNTY ENGINEER.

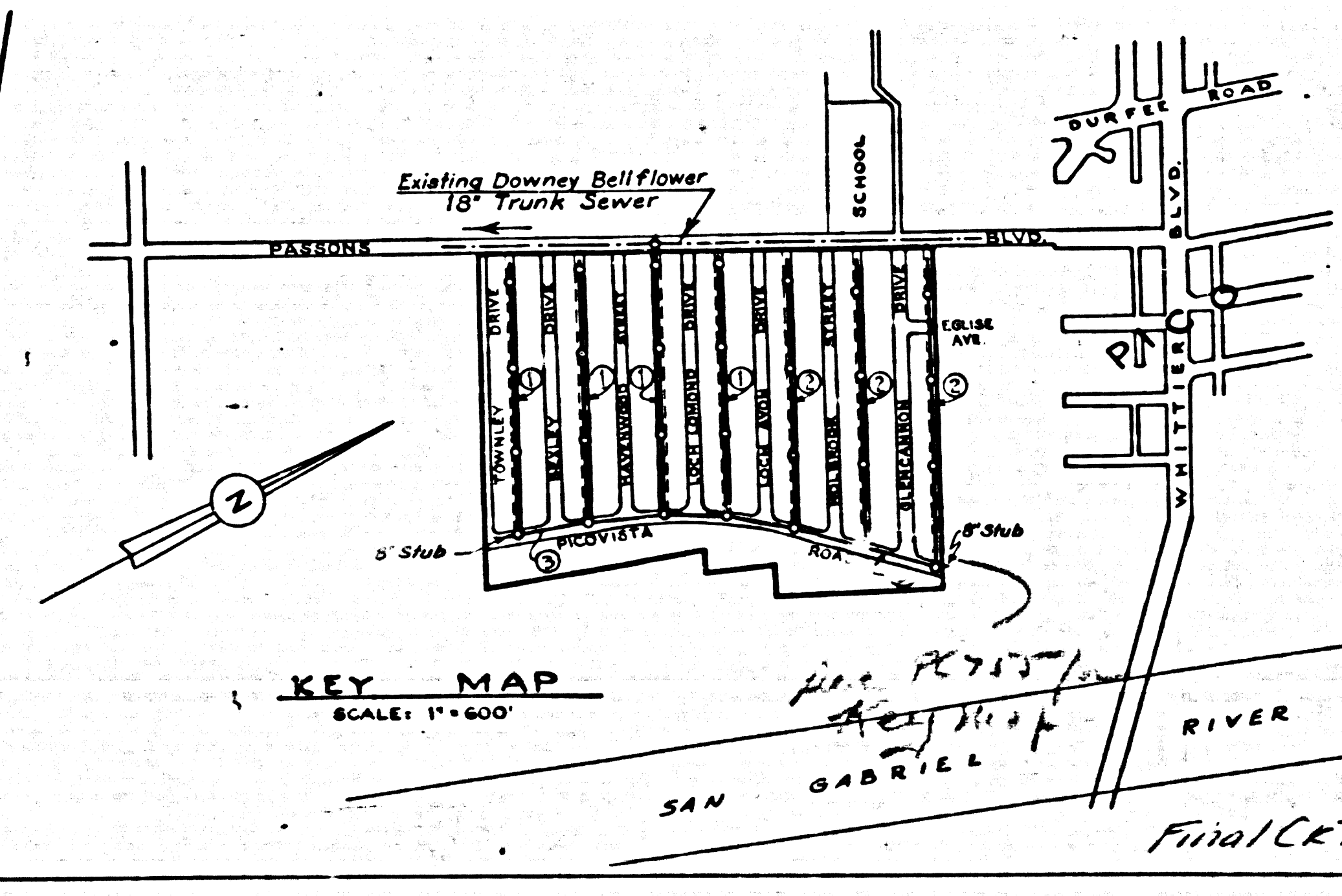
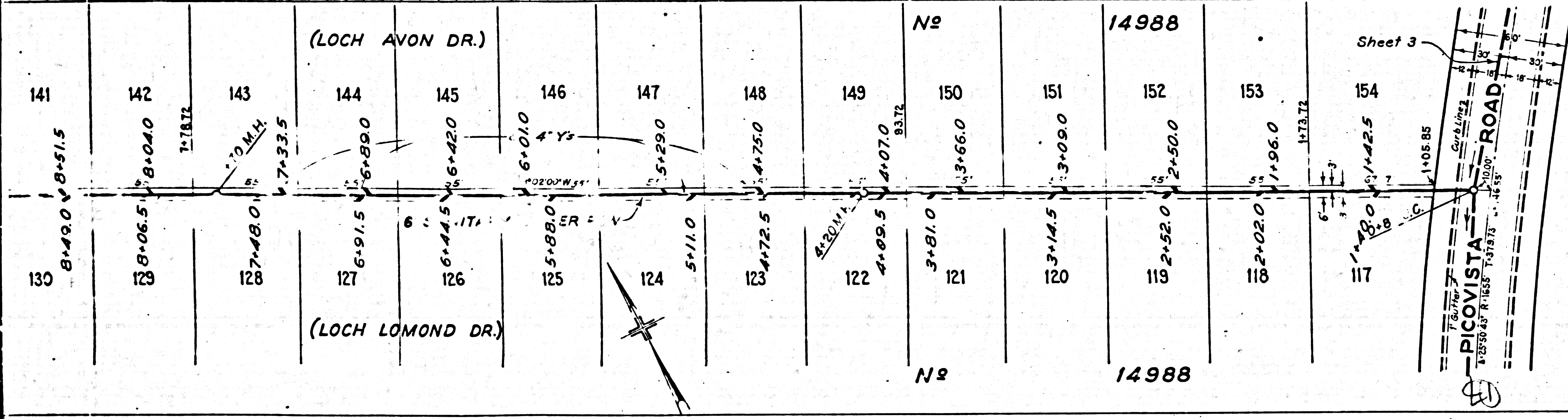
**PROFILE, ALIGNMENT AND GRADE OF  
 SANITARY SEWERS  
 TO BE CONSTRUCTED IN  
 SANITARY SEWER RIGHTS OF WAY  
 IN TRACT N<sup>o</sup> 14988**

PRIVATE CONTRACT N<sup>o</sup> 690  
 W.S. 36  
 SHEET 1 OF 3 SHEETS  
 PREPARED IN THE OFFICE OF LEONARD H. GOWDY

BY: *Leonard H. Gowdy*  
 REGISTERED CIVIL ENGINEER N<sup>o</sup> 223  
 SCALE: Ver. 1"=4'  
 Hor. 1"=40'      OCTOBER 1947

FOR LEGEND, SEE PLAN N<sup>o</sup> S-a-64

**NOTE:**  
 GRADES TO WHICH THIS IMPROVEMENT IS TO BE CONSTRUCTED ARE SHOWN ON PLANS AND PROFILES. GRADE POINTS FOR TOP OF CURB, CENTER LINE OF STREET OR CENTER LINE OF ALLEY ARE SHOWN BY CIRCLES ON PROFILES. AT ALL POINTS BETWEEN DESIGNATED POINTS THE GRADE SHALL BE ESTABLISHED SO AS TO CONFORM TO A STRAIGHT LINE DRAWN BETWEEN SAID DESIGNATED POINTS.  
 ELEVATIONS ARE IN FEET ABOVE U.S. G.S. DATUM OR MEAN SEA LEVEL.  
 THIS DRAWING AND THE DATA HEREON ARE HEREBY MADE A PART OF THE SPECIFICATIONS. WORK SHALL BE CONSTRUCTED ACCORDING TO SPECIFICATIONS ON FILE IN THE OFFICE OF THE COUNTY ENGINEER, AND SHALL BE PROSECUTED ONLY IN THE PRESENCE OF THE COUNTY ENGINEER. BEFORE WORK CAN BE STARTED, THE CONTRACTOR MUST OBTAIN A PERMIT TO EXCAVATE IN COUNTY STREETS FROM THE L.A. COUNTY ROAD DEPT., 1104 HALL OF RECORDS, AND MAKE A DEPOSIT WITH THE COUNTY ENGINEER, 700 FASHION LEAGUE BUILDING, SUFFICIENT TO COVER THE COST OF CONSTRUCTION INSPECTION AND RECORD PLANS.  
 COUNTY OF LOS ANGELES, CALIFORNIA



APPROVED: *Clarence*  
 COUNTY ENGINEER

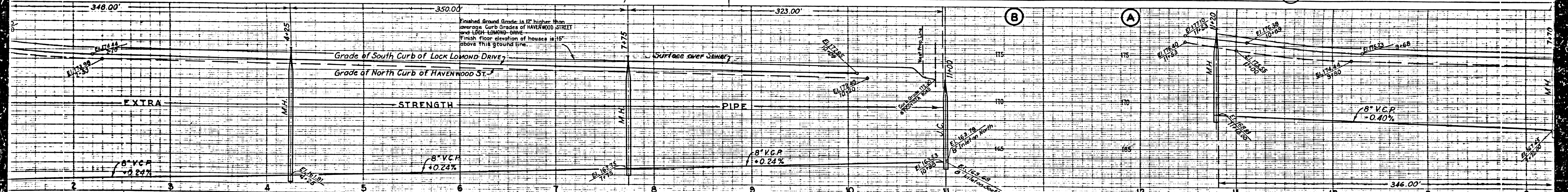
APPROVED: *Clarence*  
 CHIEF ENGINEER OF COUNTY  
 SANITATION DISTRICT N<sup>o</sup> 2

CHECKED BY: *Walter C. McFarren*  
 OFFICE OF COUNTY ENGINEER, N<sup>o</sup> 624 1200

SANITARY SEWERS IN SEWER R/W



7871  
 7870



TRACT	100	101	102	103	104	105	106	107	108	109	110	111	112	113	114	115	116	117	118	119	120	121	122	123	124	125	126	127	128	129	130	131	132	133	134	135	136	137	138	139	140	141	142			
	1750	2225	2740	3237	3920	4280	5025	5530	5953	6645	7152	7710	8250	8723	9400	9948	10502	11004	11504	12004	12504	13004	13504	14004	14504	15004	15504	16004	16504	17004	17504	18004	18504	19004	19504	20004	20504	21004	21504	22004	22504	23004	23504	24004	24504	25004
	95	94	93	92	91	90	89	88	87	86	85	84	83	82	81	80	79	78	77	76	75	74	73	72	71	70	69	68	67	66	65	64	63	62	61	60	59	58	57	56	55	54	53	52	51	50

TRACT

NO

NO







W.S. BAKER ENGINEERING  
8881 W. TART

Existing 18" Downy  
PASSONS  
ELECTRIC ILLINOIS DIST. CO.

Over Trunk Sewer  
BLVD  
PASSONS

1170.95  
21  
1120.5  
22  
1113.35

1067.5  
19  
1065.0  
23  
1058.85

9720  
17  
9741.5  
24

9340  
16  
9220  
25

8565  
15  
8540  
26

8085  
14  
8060  
27

7520  
13  
7410  
28

6990  
12  
6965  
29

6450  
11  
6475  
30

5850  
10  
5850  
31

5340  
9  
5340  
32

4840  
8  
4840  
33

4240  
7  
4240  
34

3725  
6  
3700  
35

3220  
5  
3220  
36

2740  
4  
2585  
37

2240  
3  
2050  
38

1740  
2  
1635  
39

1240  
1  
1225  
40

740  
0  
740  
41

240  
-1  
240  
42

100  
-2  
100  
43

50  
-3  
50  
44

25  
-4  
25  
45

12.5  
-5  
12.5  
46

6.25  
-6  
6.25  
47

3.125  
-7  
3.125  
48

1.5625  
-8  
1.5625  
49

0.78125  
-9  
0.78125  
50

0.390625  
-10  
0.390625  
51

0.1953125  
-11  
0.1953125  
52

0.09765625  
-12  
0.09765625  
53

0.048828125  
-13  
0.048828125  
54

0.0244140625  
-14  
0.0244140625  
55

0.01220703125  
-15  
0.01220703125  
56

0.006103515625  
-16  
0.006103515625  
57

0.0030517578125  
-17  
0.0030517578125  
58

0.00152587890625  
-18  
0.00152587890625  
59

0.000762939453125  
-19  
0.000762939453125  
60

0.0003814697265625  
-20  
0.0003814697265625  
61

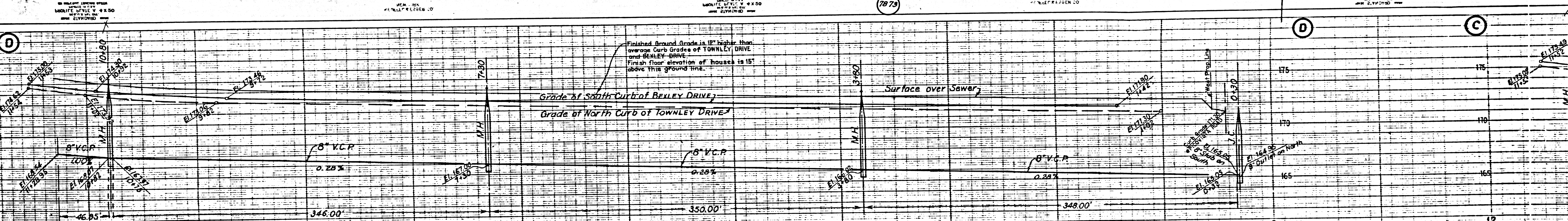
0.00019073486328125  
-21  
0.00019073486328125  
62

0.000095367431640625  
-22  
0.000095367431640625  
63

0.0000476837158203125  
-23  
0.0000476837158203125  
64

0.00002384185791015625  
-24  
0.00002384185791015625  
65

0.000011920928955078125  
-25  
0.000011920928955078125  
66



Finished Around Grade is 12" higher than  
average Curb Grades of TOWNLEY DRIVE  
and BEXLEY DRIVE.  
Finish floor elevation of houses is 15'  
above this ground line.

7873

Existing 18" Downy-Bell/Power Trunk Sewer  
PASSONS  
ELECTRIC ILLINOIS DIST. CO.

BLVD  
PASSONS

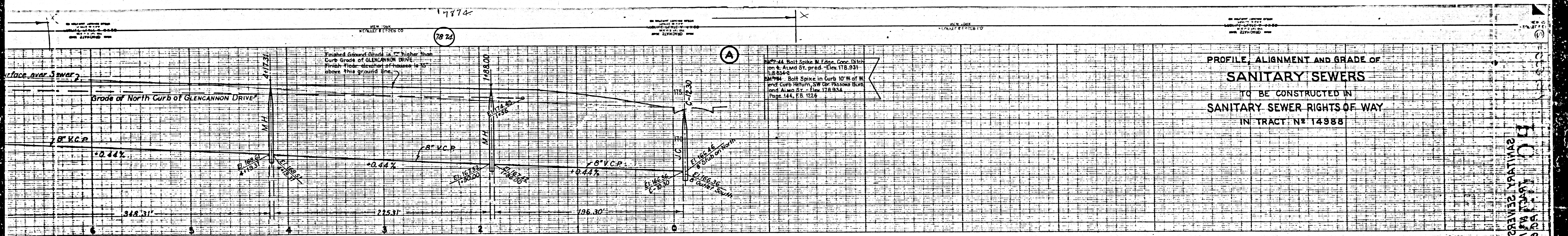
PICOVISTA ROAD

51135.0  
51132.5

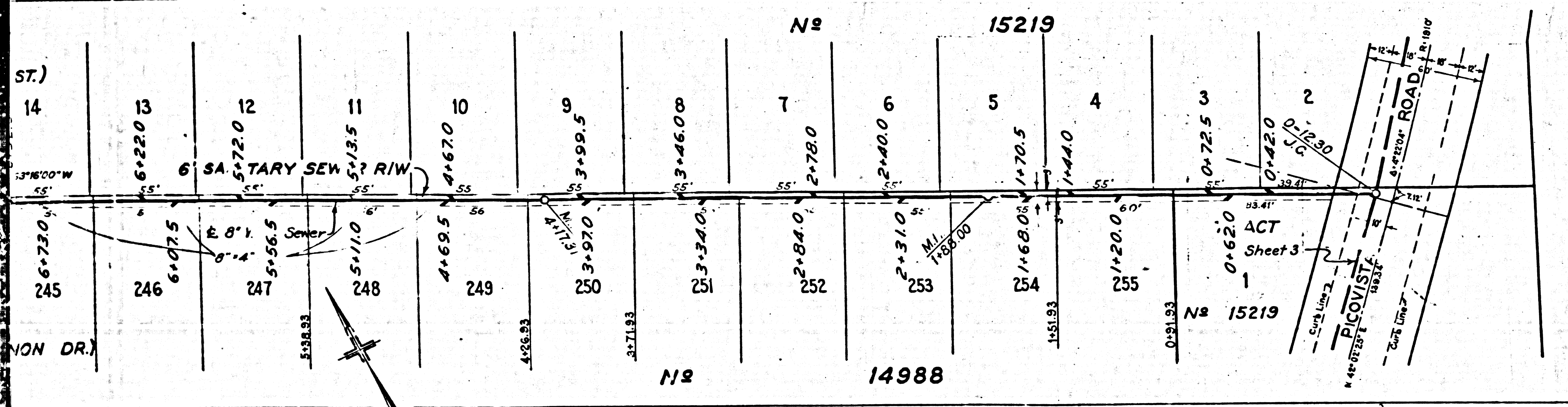
M3

M5





**PROFILE, ALIGNMENT AND GRADE OF  
SANITARY SEWERS  
TO BE CONSTRUCTED IN  
SANITARY SEWER RIGHTS OF WAY  
IN TRACT N<sup>o</sup> 14988**

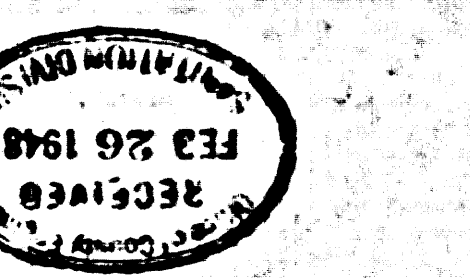


PRIVATE CONTRACT N<sup>o</sup> 690  
W.S. 36  
SHEET 2 OF 3 SHEETS  
PREPARED IN THE OFFICE OF LEONARD H. GOWDY  
BY: *Leonard H. Gowdy*  
REGISTERED CIVIL ENGINEER No. 4822  
SCALE: Hor. 1" = 40'      OCTOBER 1947  
FOR LEGEND, SEE PLAN N<sup>o</sup> S-a-64  
FOR CONSTRUCTION NOTES SEE SHEET N<sup>o</sup> 1

COUNTY OF LOS ANGELES, CALIFORNIA  
Revision Checked *J.B. Moore*      APPROVED *J.B. Moore*  
OFFICE OF COUNTY ENGINEER, REG. CL. 11502      COUNTY ENGINEER  
CHECKED BY *Matt C. McMan*      APPROVED *Matt C. McMan*  
OFFICE OF COUNTY ENGINEER, REG. CL. 11502      COUNTY ENGINEER  
SANITATION DISTRICT NO. 4

*Find CH T.P. 4/22/48*

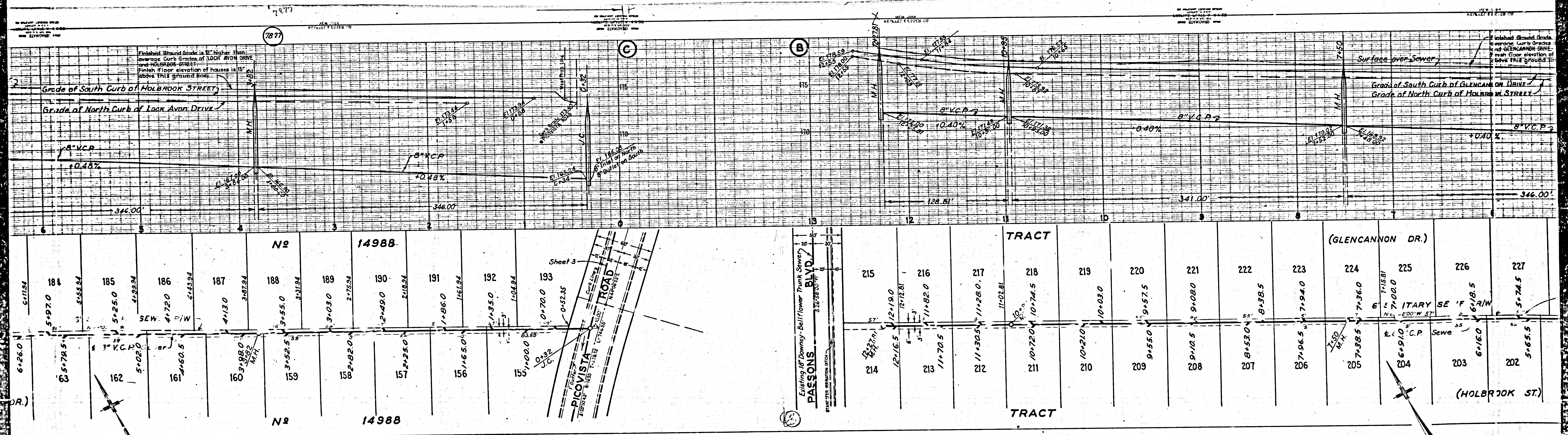
SANITARY SEWERS IN SEWER R/W









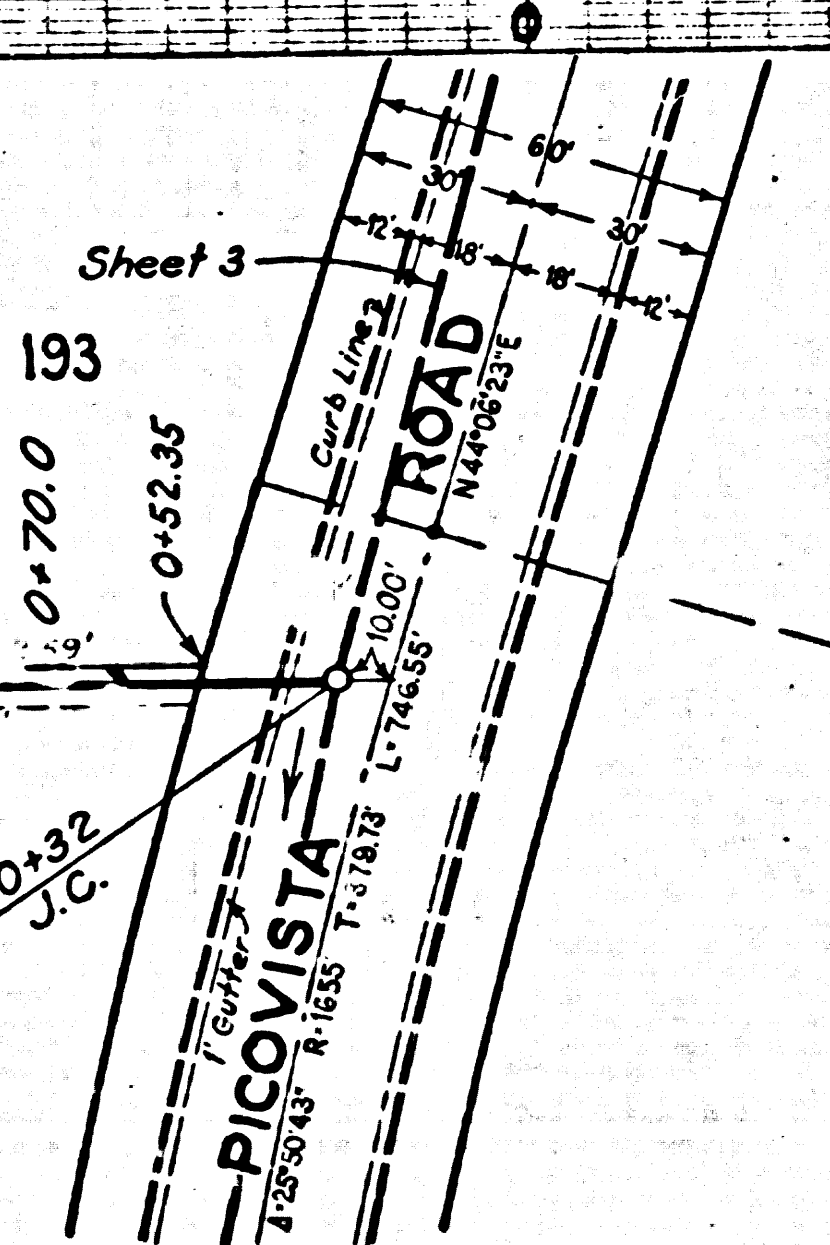


Finished Ground Grade is 12" higher than average Curb Grade of LOOK AVON DRIVE and HOLBROOK STREET. Finish floor elevation of houses is 15" above this ground line.

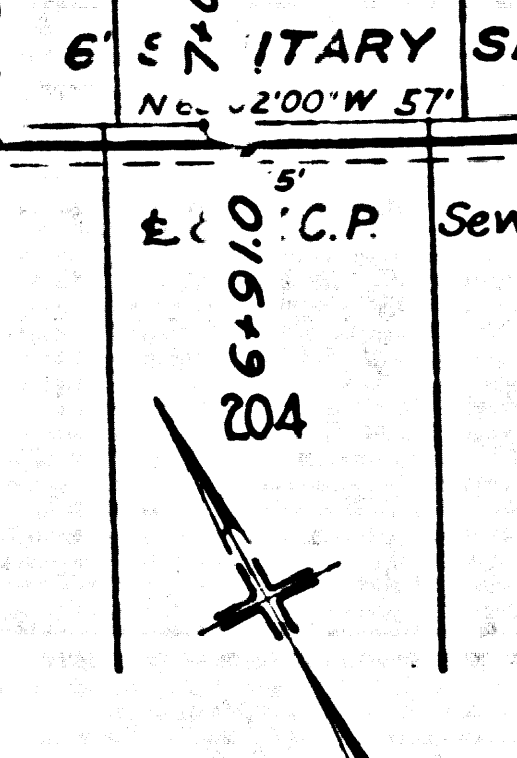
Finished Ground Grade is 12" higher than average Curb Grade of GLENCANNON DRIVE and HOLBROOK STREET. Finish floor elevation of houses is 15" above this ground line.

184	185	186	187	188	189	190	191	192	193
511.84	519.70	515.84	525.0	429.84	4720	513.0	318.84	310.0	275.84
5174.5	525.0	4720	4130	318.84	310.0	275.84	249.0	218.84	186.0
162	161	160	159	158	157	156	155	154	153
5126.0	5174.5	5102.0	5160.5	5188.0	5182.0	5125.0	5165.0	5135.0	5120.0
162	161	160	159	158	157	156	155	154	153
5126.0	5174.5	5102.0	5160.5	5188.0	5182.0	5125.0	5165.0	5135.0	5120.0

215	216	217	218	219	220	221	222	223	224	225	226	227
121.16.5	121.19.0	112.28.0	107.20.0	107.74.5	107.21.0	107.03.0	91.55.0	91.57.5	91.08.0	81.38.5	71.94.0	71.36.0
121.16.5	121.19.0	112.28.0	107.20.0	107.74.5	107.21.0	107.03.0	91.55.0	91.57.5	91.08.0	81.38.5	71.94.0	71.36.0
214	213	212	211	210	209	208	207	206	205	204	203	202
121.16.5	117.70.5	111.30.5	107.20.0	107.21.0	91.55.0	91.08.0	81.38.5	71.94.0	71.38.5	61.91.0	61.60	51.65.5
214	213	212	211	210	209	208	207	206	205	204	203	202
121.16.5	117.70.5	111.30.5	107.20.0	107.21.0	91.55.0	91.08.0	81.38.5	71.94.0	71.38.5	61.91.0	61.60	51.65.5



Existing 18" Downy-Bellflower Trunk Sewer  
PASSONS BLDG  
325-233-0000  
P.I.W. 204



7877

(B)

(C)

TRACT

(GLENCANNON DR.)

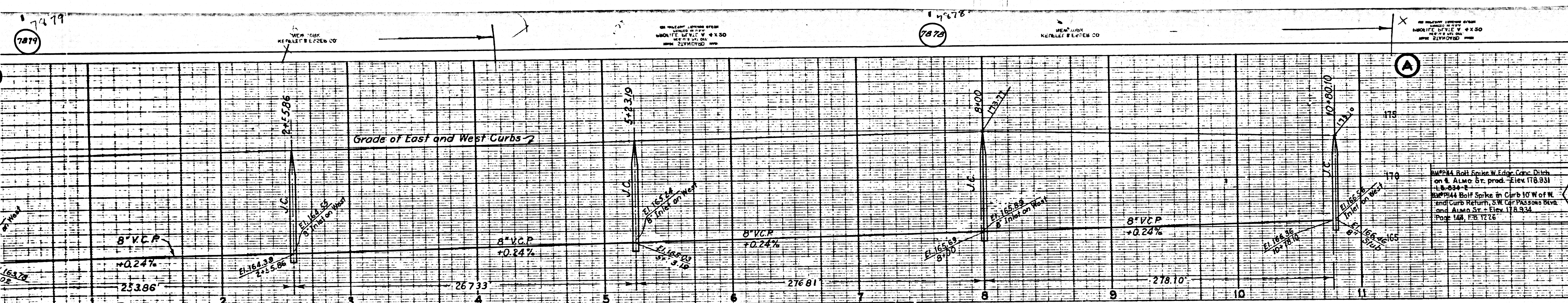
TRACT

(HOLBROOK ST.)





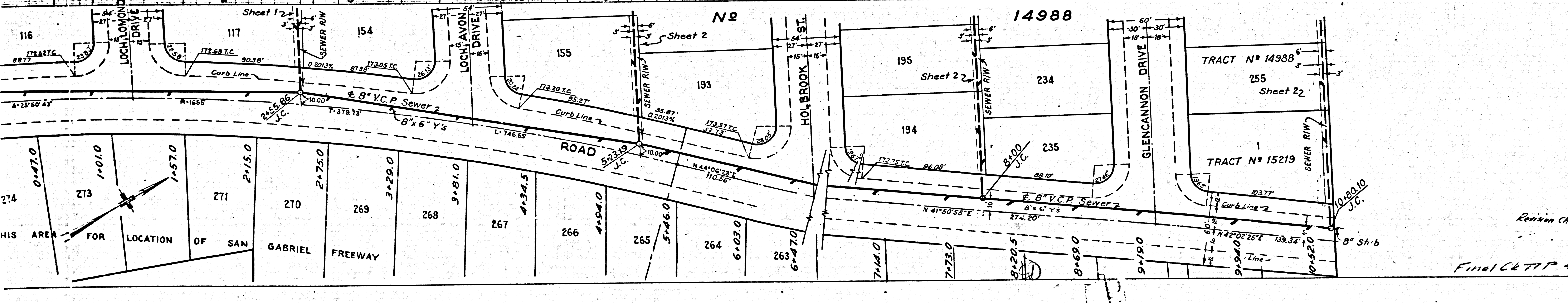




PROFILE, ALIGNMENT AND GRADE OF  
**SANITARY SEWERS**  
 TO BE CONSTRUCTED IN  
 PICOVISTA ROAD  
 IN TRACT N° 14988

1/4" = 1' HORIZ. SCALE  
 1" = 1' VERT. SCALE

SEE SHEET 14988-1 FOR  
 PLAN AND ELEVATION DATA



PRIVATE CONTRACT N° 690  
 W.S. 36  
 SHEET 3 OF 3 SHEETS  
 PREPARED IN THE OFFICE OF LEONARD H. GOWDY  
 BY: *Leonard H. Gowdy*  
 REGISTERED CIVIL ENGINEER 44 4828  
 SCALE: Ver. 1" = 4'  
 Hor. 1" = 40' OCTOBER 1947  
 FOR LEGEND, SEE PLAN N° S-a-64  
 FOR CONSTRUCTION NOTES SEE SHEET N° 1

COUNTY OF LOS ANGELES, CALIFORNIA

APPROVED: *W. C. McLean*  
 COUNTY ENGINEER

APPROVED: *W. C. McLean*  
 CHIEF ENGINEER OF COUNTY  
 SANITATION DISTRICT NO. 1

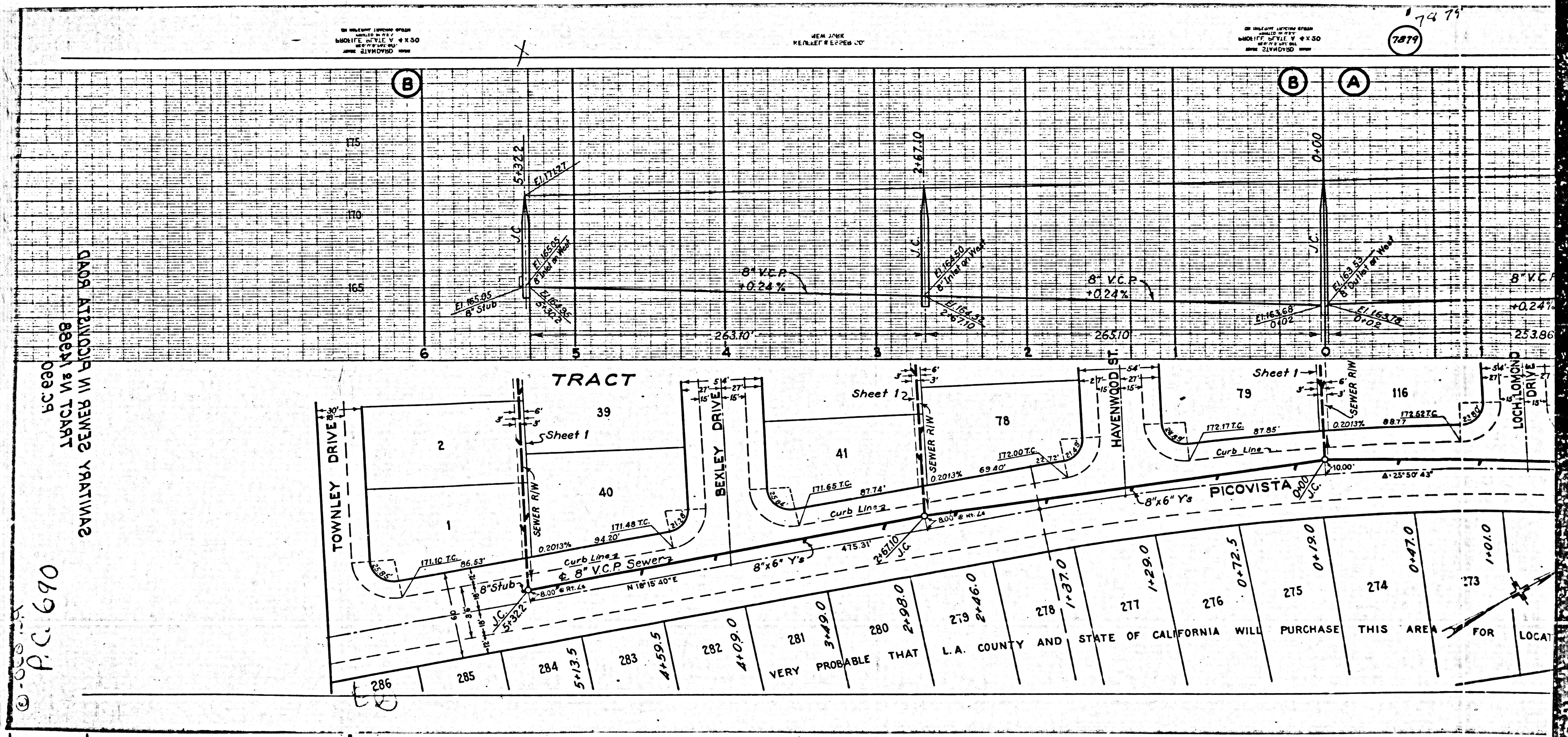
CHECKED BY: *W. C. McLean*  
 OFFICE OF COUNTY ENGINEER, ROOM 2120

REVISION CHECKED: *J. P. H. H. C.*  
 7-23-48

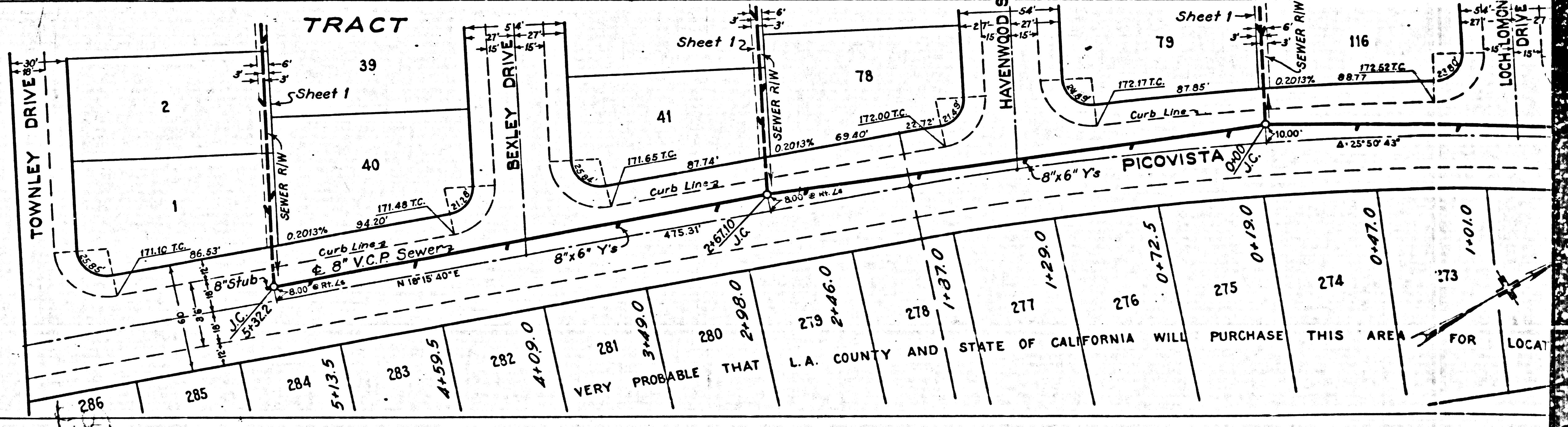
RECEIVED  
 FEB 26 1948

8888 2W 14988-3  
 100 8888





000000  
 P.C. 690  
 08334  
 BEEM IN TRACT  
 0808 AT RINCPA IN RANAS VARTIARAS



VERY PROBABLE THAT L.A. COUNTY AND STATE OF CALIFORNIA WILL PURCHASE THIS AREA FOR LOCAL

74 73  
 7879