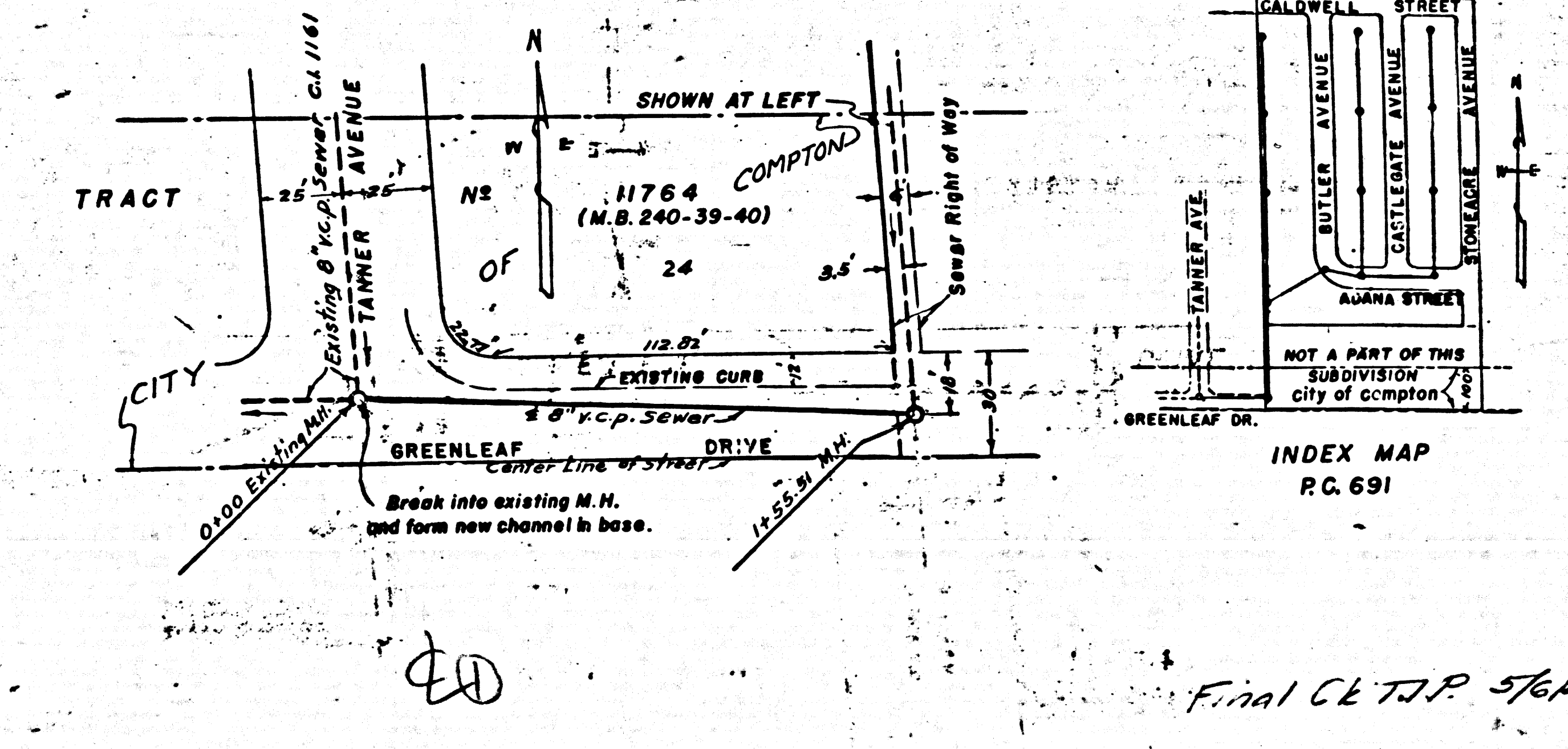
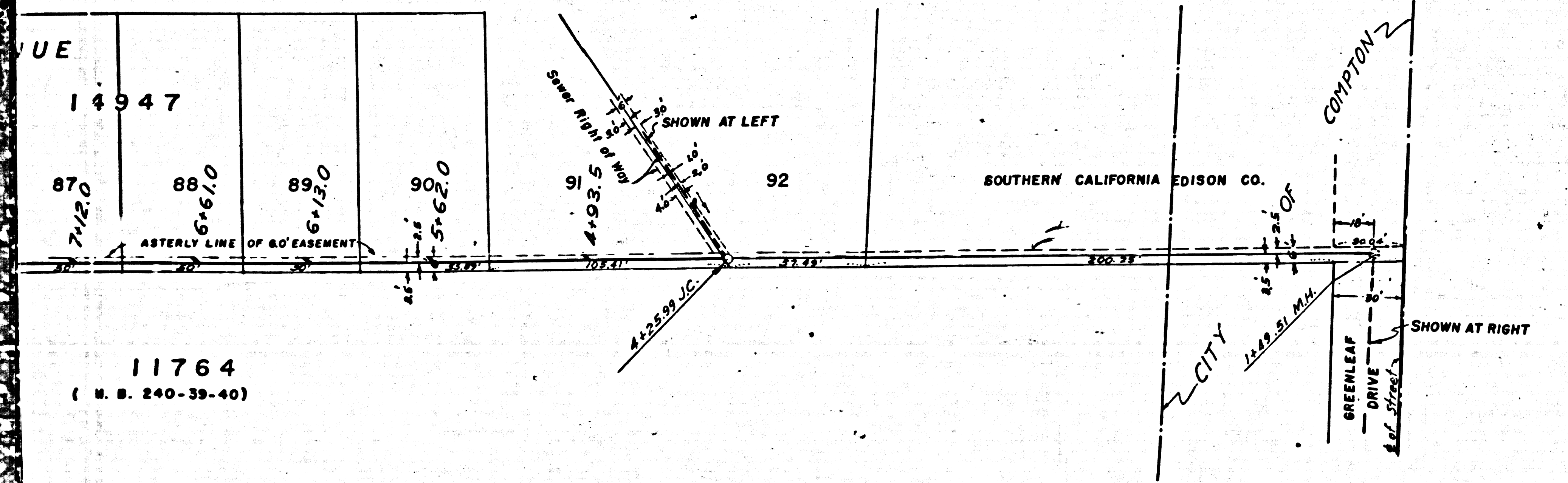
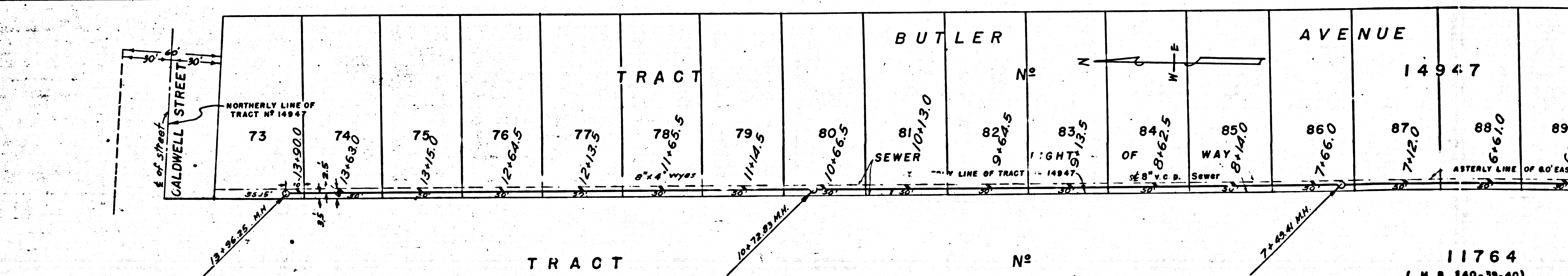
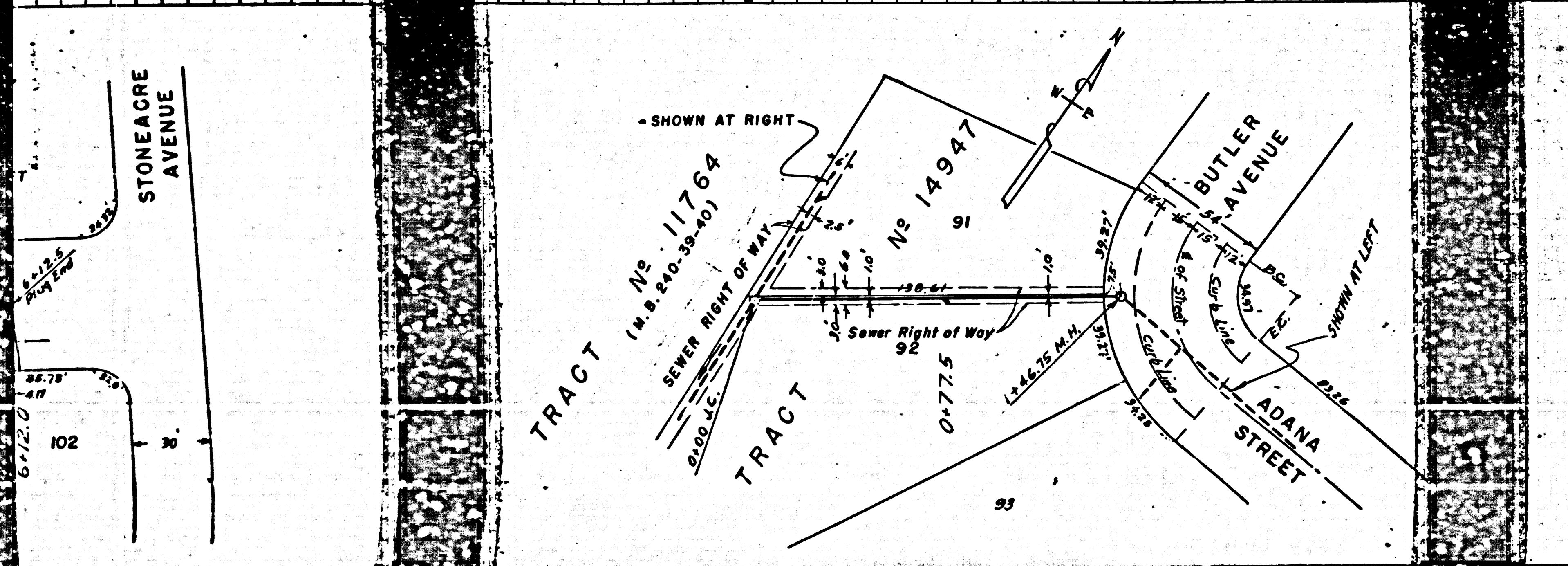
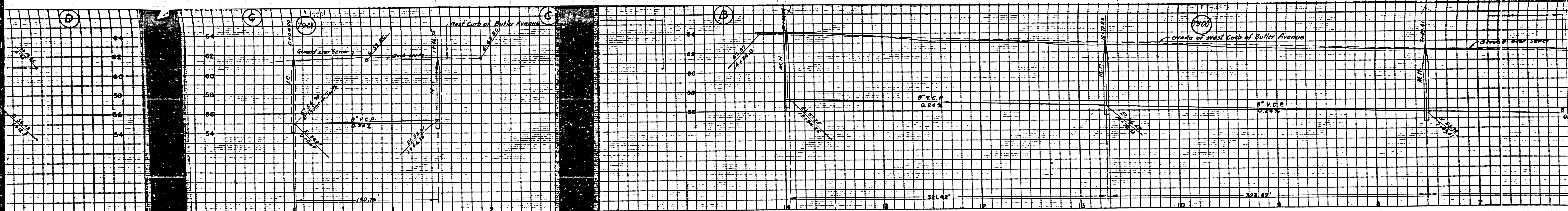


PROFILE, ALIGNMENT AND GRADE OF
SANITARY SEWERS
 TO BE CONSTRUCTED IN
GREENLEAF DRIVE
 BETWEEN TANNER AVENUE AND
 E. LINE OF TRACT N° 11764, M.B. 240-39-40
ADANA STREET
 BETWEEN BUTLER AVENUE AND WHITE AVENUE
SANITARY SEWER RIGHTS OF WAY
 IN TRACT N° 14947
 PRIVATE CONTRACT N° 691
 W.S. 32
 SHEET 1 OF 1 SHEETS
 SCALE HORIZONTAL 1" = 40'
 VERTICAL 1" = 4'
 NOVEMBER, 1947
 PREPARED IN THE OFFICE OF GLEN ROOD
 G. R. E. N° 2093



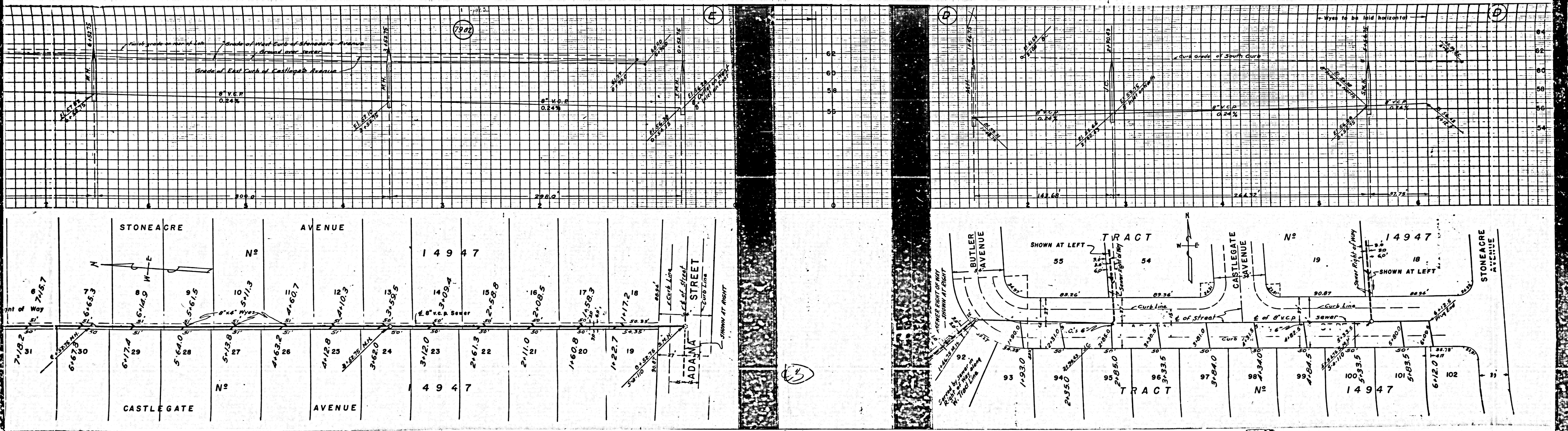
Grades to which this improvement is to be constructed are shown on plans and profile. Grade points for top of curb, center line of street or center line of alley are shown by circles on profiles. At all points between designated points the grade shall be established so as to conform to a straight line drawn between said designated points. Elevations are in feet above U.S.C.S. datum plane or mean sea level. This drawing and the data hereon are hereby made a part of the Specifications. Work shall be constructed according to Specifications on file in the office of the County Engineer and shall be prosecuted only in the presence of the County Engineer. Before work can be started, the Contractor must obtain a permit to excavate in County streets from the L.A. County Road Department, 211 South Main St., and make a deposit with the County Engineer, 700 Fashion League Building, sufficient to cover the cost of construction inspection and record plans.

COUNTY OF LOS ANGELES, CALIFORNIA
 APPROVED *[Signature]* County Engineer
 APPROVED *[Signature]* Chief Engineer of County Sanitation District N° 1
 CHECKED BY *[Signature]* Feb. 13, 1948
 Office of County Engineer, R.E. N° 6322



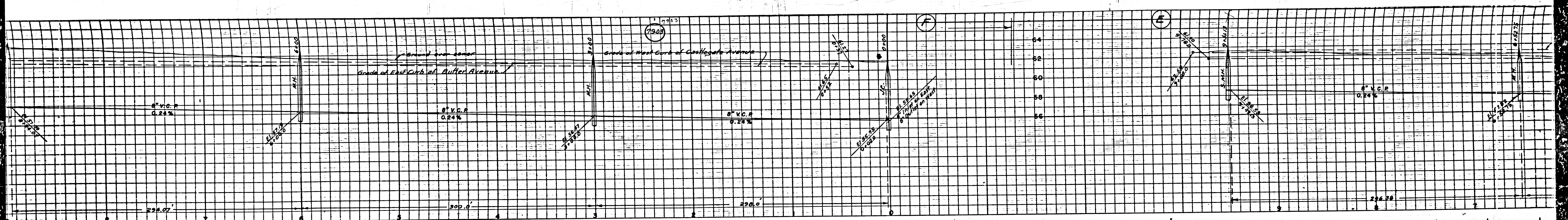
TRACT No. 11764
 (M. B. 140-39-40)

Lots in this Tract Served by Sewer in C.I. 1161

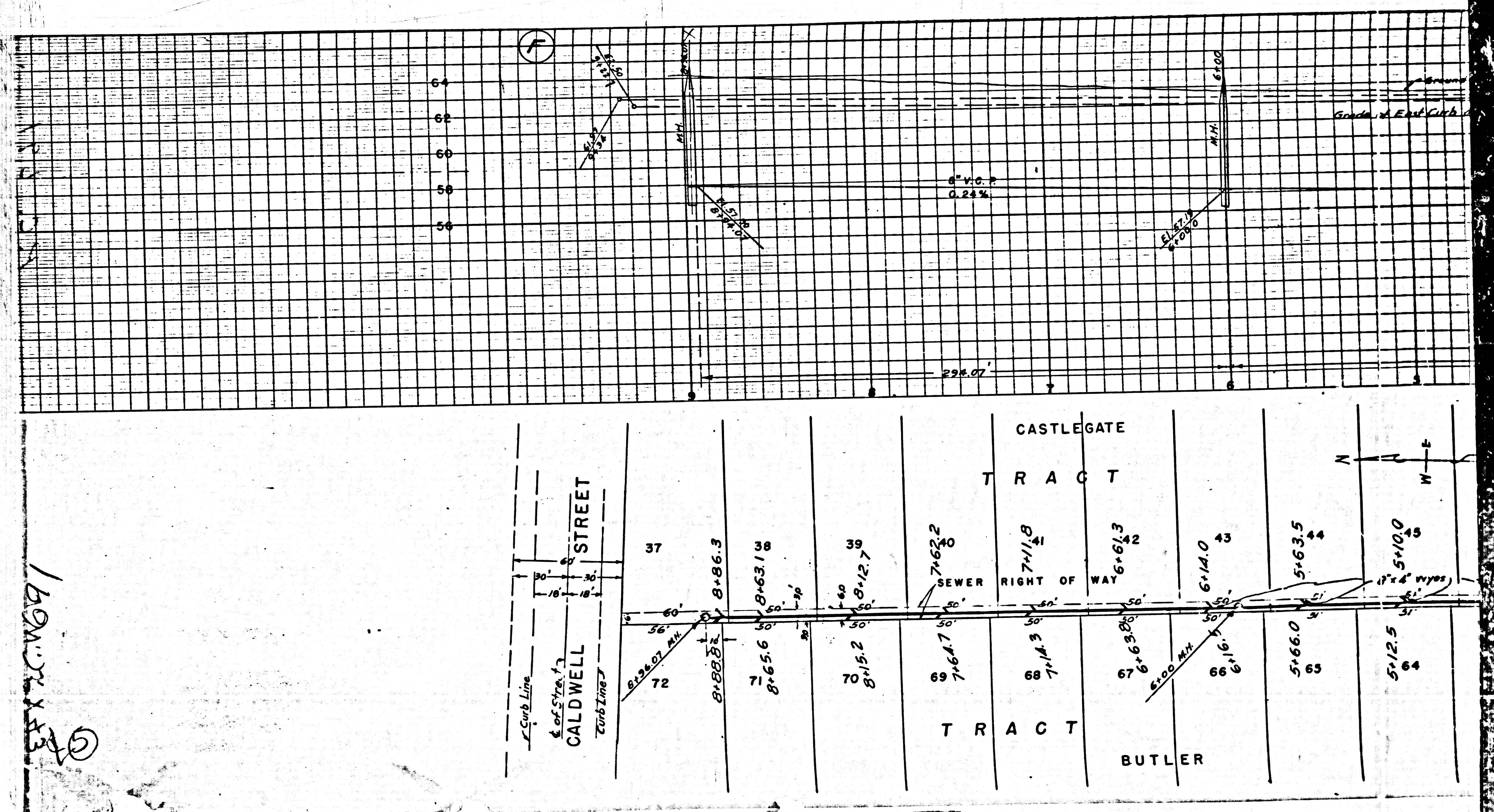


M5

M6



CASTLEGATE TRACT		BUTLER TRACT		14947 AVENUE		ADANA STREET		CALDWELL STREET		TRACT	
8+86.3	8+63.12	7+15.2	7+64.7	2+60.5	2+00	1+59.5	1+08.8	9+44.0	9+17.5	8+67.0	7+18.2
39	38	69	68	59	58	57	56	35	36	34	31
8+12.7	7+62.2	7+14.3	6+63.8	3+58.5	3+05.0	2+07.5	1+06.33	9+46.5	9+20.0	8+60.5	7+65.1
43	44	43	44	48	49	51	53	54	55	56	57
6+14.0	5+63.5	5+12.5	4+62.0	4+09.0	3+05.0	2+07.5	1+06.33	9+44.0	9+17.5	8+60.5	7+65.1
43	44	64	63	47	48	51	53	54	55	56	57
6+14.0	5+63.5	5+12.5	4+62.0	4+09.0	3+05.0	2+07.5	1+06.33	9+44.0	9+17.5	8+60.5	7+65.1
43	44	64	63	47	48	51	53	54	55	56	57



169M.2 x 13
 ①

Mb