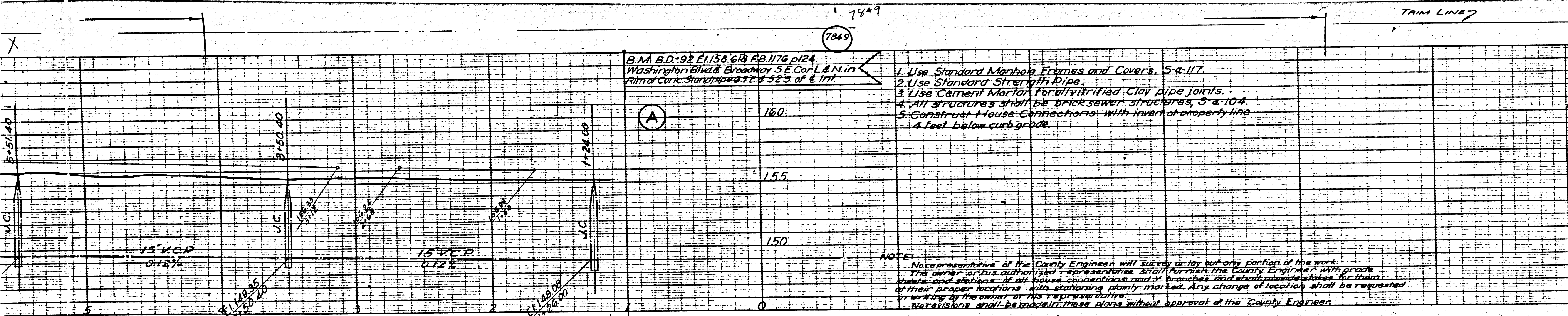


B.M. B.D.-92 E1158 618 AB.1176 p124  
 Washington Blvd. & Broadway S.E. Cor. L. & N. in  
 Film of Conc. Standard pipe 3' x 3' of 1/2"

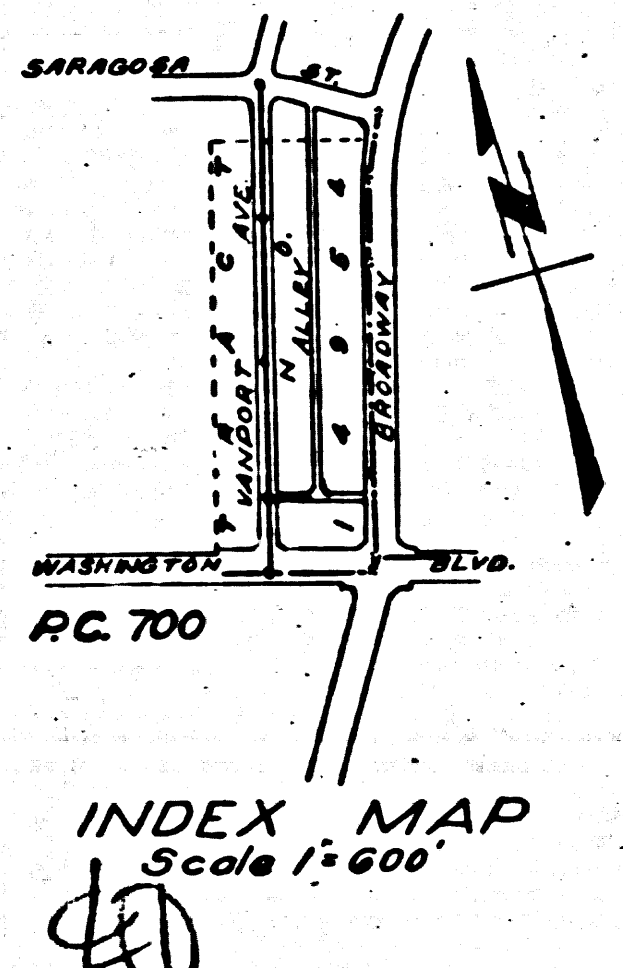
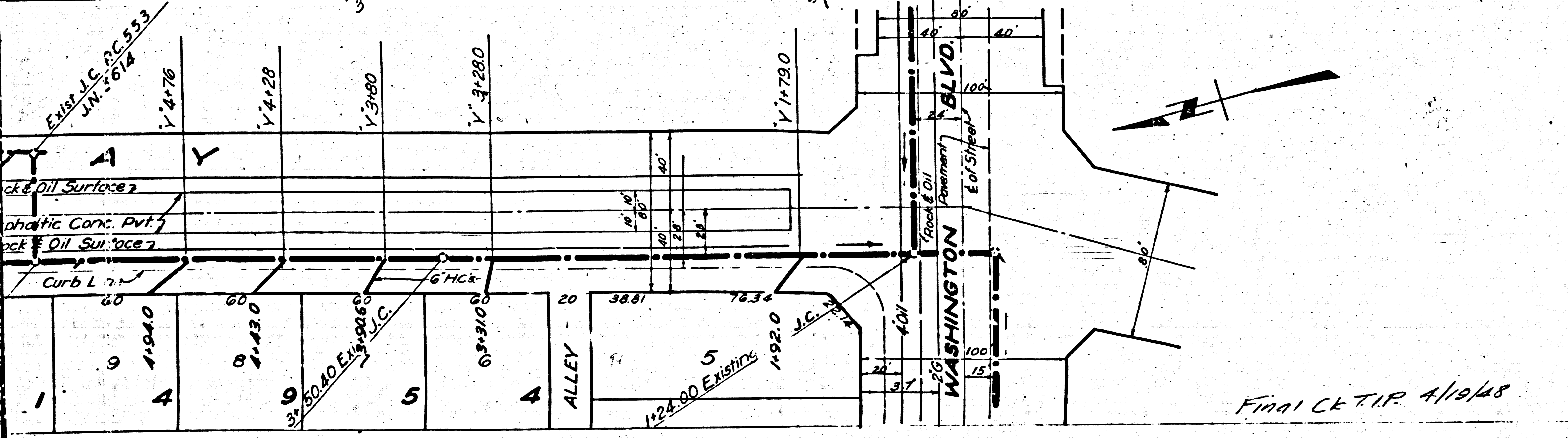
1. Use Standard Manhole Frames and Covers, S-a-117.
2. Use Standard Strength Pipe.
3. Use Cement Mortar for vitrified Clay pipe joints.
4. All structures shall be brick sewer structures, 3'-a-10'-4.
5. Construct House Connections with invert at property line  
 4 feet below curb grade.

PROFILE ALIGNMENT AND GRADE OF  
**SANITARY SEWERS**  
 TO BE CONSTRUCTED IN  
**BROADWAY**  
 BETWEEN WASHINGTON BLVD AND THE NORTH LINE OF TRACT NO. 10254  
**VANPORT AVENUE**  
 BETWEEN WASHINGTON BLVD AND SARAGOSA ST.  
**ALLEY**  
 BETWEEN VANPORT AVE. AND 160 FT. EAST



NOTE:  
 No representation of the County Engineer will survey or lay out any portion of the work.  
 The owner or his authorized representatives shall furnish the County Engineer with grade  
 sheets and stations of all house connections and Y branches and shall provide stakes for them  
 at their proper locations with stationing plainly marked. Any change of location shall be requested  
 in writing by the owner at his responsibility.  
 Measurements shall be made in these plans without approval of the County Engineer.

PRIVATE CONTRACT NO. 700  
 WS 37  
 PREPARED IN THE OFFICE OF  
**KARL F. TUTTLE**



BY *Karl F. Tuttle*  
 F.O.D. LEGEND RE 2000  
 SEE PLAN NO. S-4-G-4

NOTE:  
 Grades to which this improvement is to be constructed are shown on Plans and Profile. Grade points for top  
 of curb, center line of street or center line of alley are shown by circles on Profiles. At all points between  
 designated points the grade shall be established so as to conform to a straight line drawn between  
 said designated points.  
 Elevations are in feet above U.S.G.S datum or mean sea level.  
 This drawing and the data hereon are hereby made a part of the specifications.  
 Work shall be constructed according to specifications on file in the office of the County Engineer  
 and shall be prosecuted only in the presence of the County Engineer.  
 Before work can be started, the contractor must obtain a permit to excavate in County Streets  
 from the L.A. County Road Dept., 104 1/2 Hill of Records and make a deposit with the County Engineer  
 700 Fashion League Bldg. sufficient to cover the cost of construction inspection and record plans.  
 If work is to be done in a State Highway a permit must be obtained from the State of California,  
 Division of Highways 808 State Bldg. after making the deposit with the County Engineer.

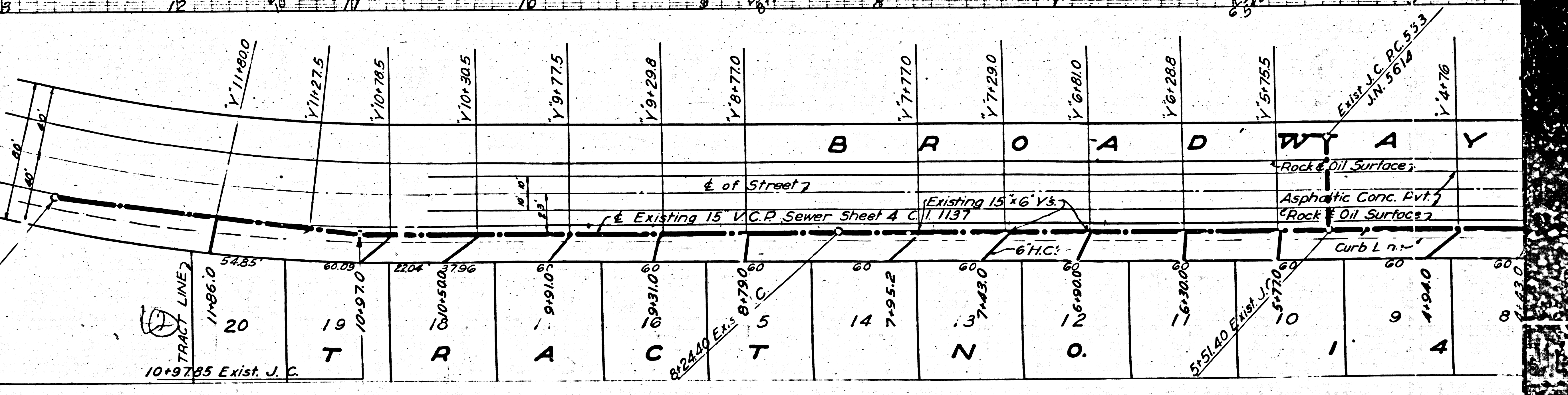
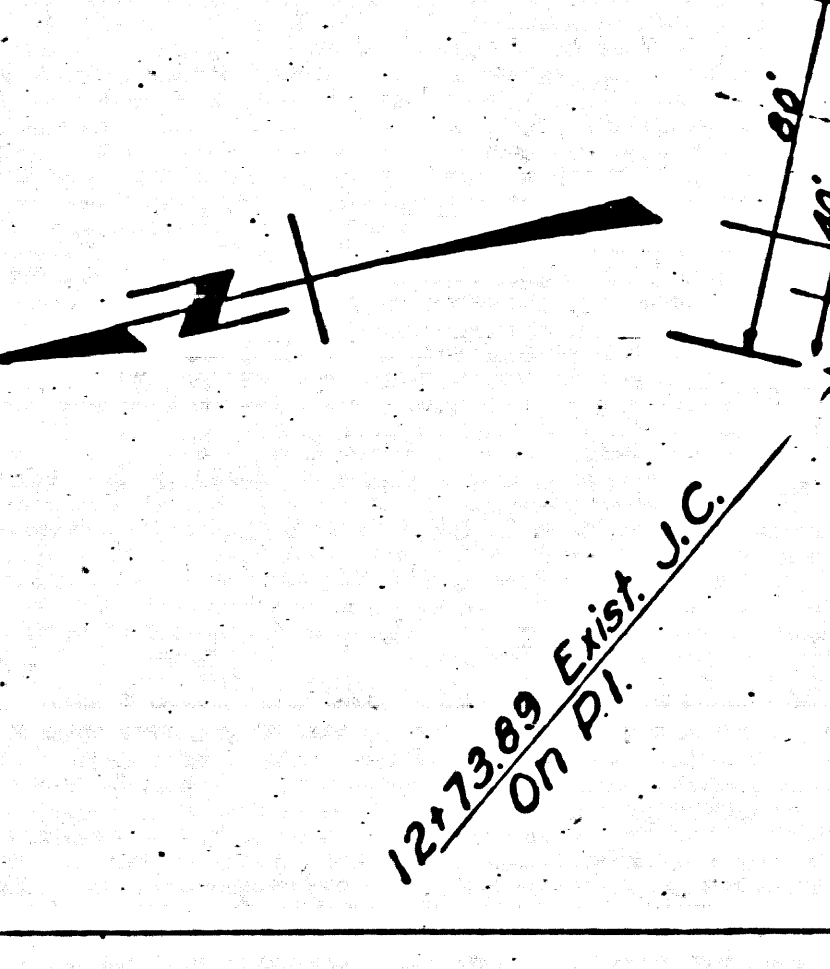
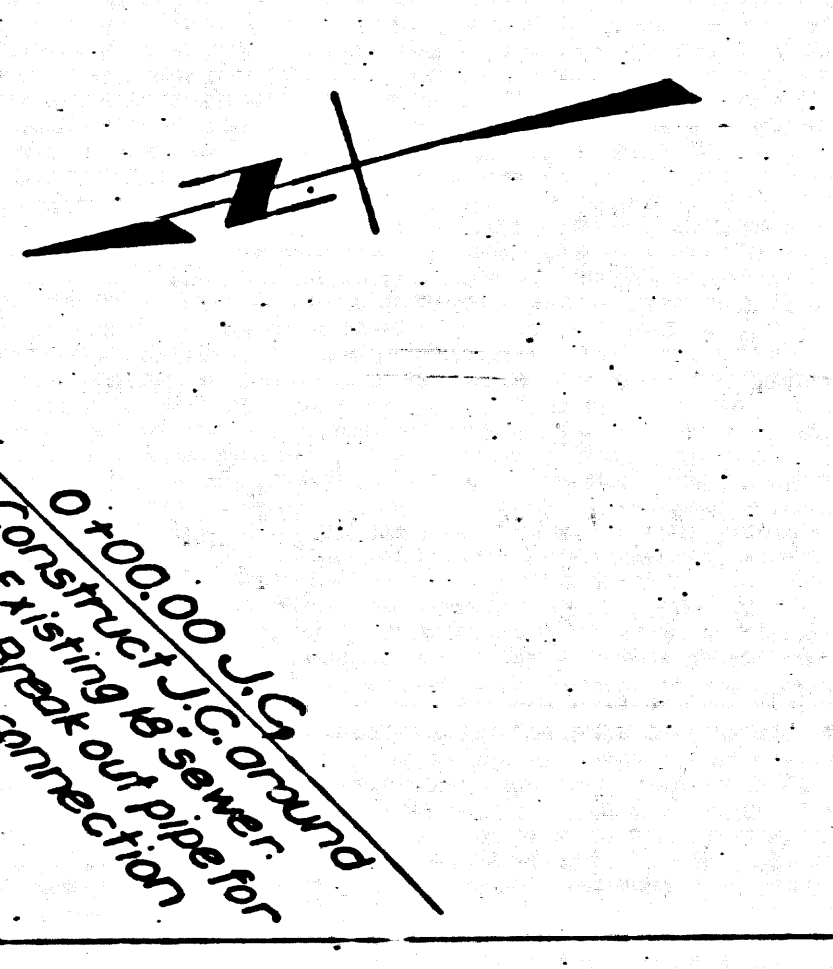
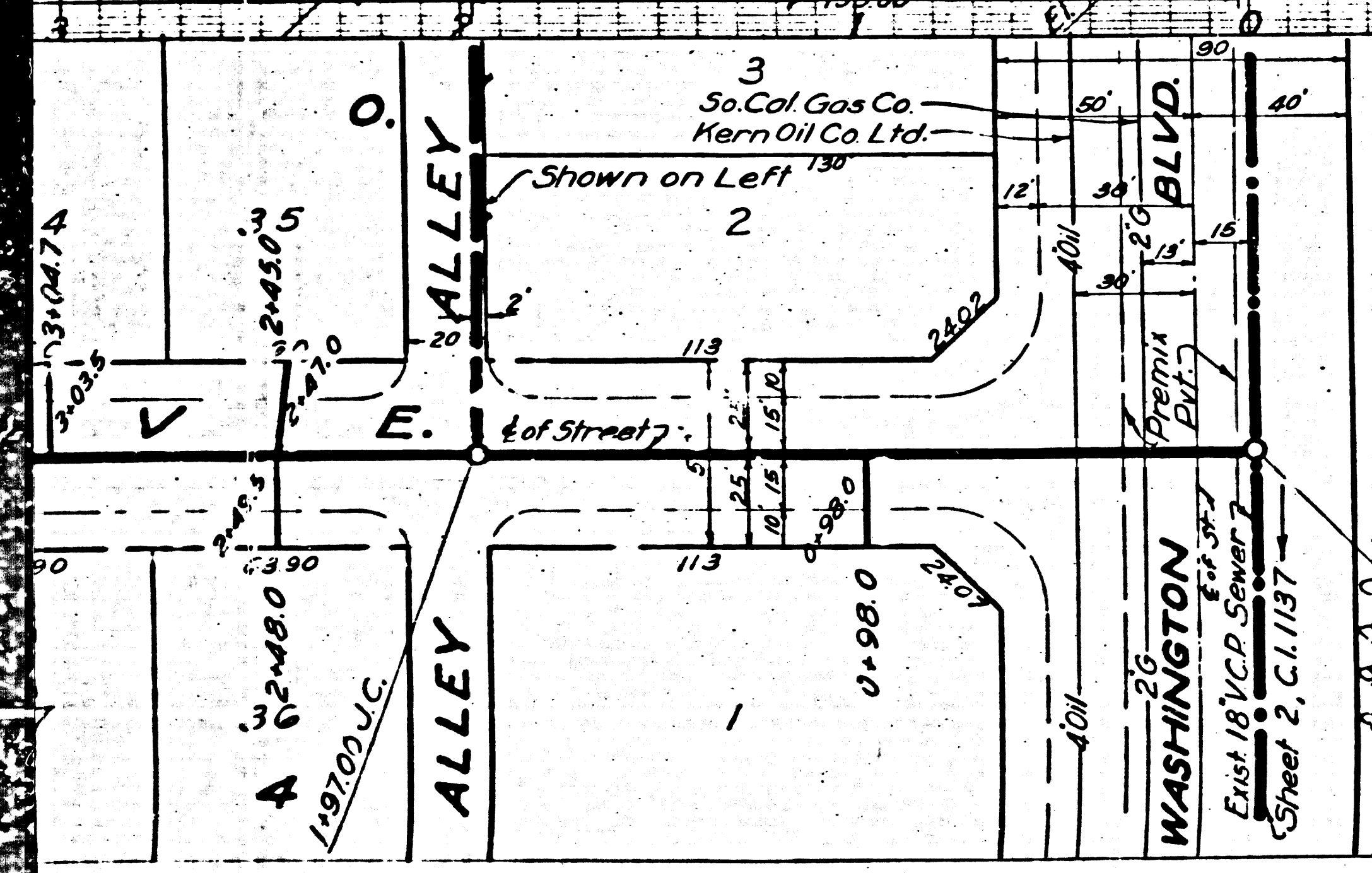
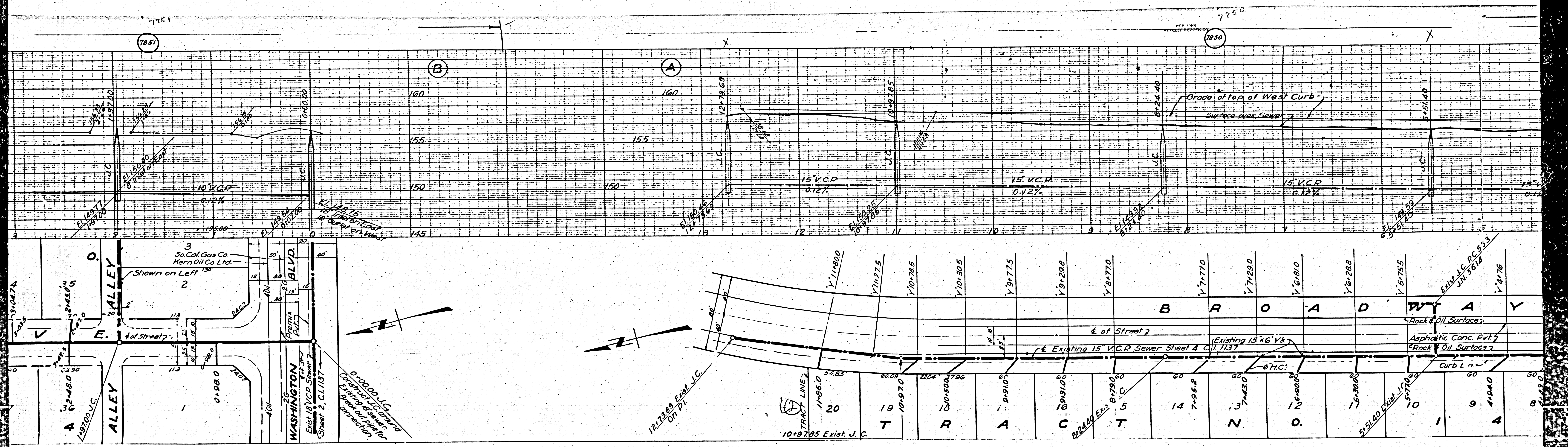
COUNTY OF LOS ANGELES, CALIFORNIA

APPROVED *Karl F. Tuttle*  
 COUNTY ENGINEER

APPROVED *[Signature]*  
 COUNTY ENGINEER

CHECKED *[Signature]* JAN 16 1945  
 Office of County Engineer, P.E. 4222

RECEIVED  
 JAN 25 1945  
 100



7851

7850

(B)

(A)

160

160

155

155

150

150

145

10\"/>

15\"/>

15\"/>

15\"/>

Grade of top of West Curb  
Surface over Sewer

3  
So. Cal. Gas Co.  
Kern Oil Co. Ltd.  
Shown on Left

WASHINGTON  
BLVD

18\"/>

18\"/>

18\"/>

18\"/>

12+12.89 Exist. J.C.  
On P.I.

TRACT LINE

10+97.85 Exist. J.C.

8+24.00 Exist. J.C.

Existing 15\"/>

Existing 15\"/>

Rock & Oil Surface

Asphaltic Conc. Pavt.

Rock & Oil Surface

Curb L. n. m.

10

9

8

7

6

5

4

3

2

1

0

-1

-2

-3

-4

-5

-6

-7

-8

-9

-10

-11

-12

-13

-14

-15

-16

-17

-18

-19

-20

-21

-22

-23

-24

-25

-26

-27

-28

-29

-30

-31

-32

-33

-34

-35

-36

-37

-38

-39

-40

-41

-42

-43

-44

-45

-46

-47

-48

-49

-50

-51

-52

-53

-54

-55

-56

-57

-58

-59

-60

-61

-62

-63

-64

-65

-66

-67

-68

-69

-70

-71

-72

-73

-74

-75

-76

-77

-78

-79

-80

-81

-82

-83

-84

-85

-86

-87

-88

-89

-90

-91

-92

-93

-94

-95

-96

-97

-98

-99

-100

-101

-102

-103

-104

-105

-106

-107

-108

-109

-110

-111

-112

-113

-114

-115

-116

-117

-118

-119

-120

-121

-122

-123

-124

-125

-126

-127

-128

-129

-130

-131

-132

-133

-134

-135

-136

-137

-138

-139

-140

-141

-142

-143

-144

-145

-146

-147

-148

-149

-150

-151

-152

-153

-154

-155

-156

-157

-158

-159

-160

-161

-162

-163

-164

-165

-166

-167

-168

-169

-170

-171

-172

-173

-174

-175

-176

-177

-178

-179

-180

-181

-182

-183

-184

-185

-186

-187

-188

-189

-190

-191

-192

-193

-194

-195

-196

-197

-198

-199

-200

-201

-202

-203

-204

-205

-206

-207

-208

-209

-210

-211

-212

-213

-214

-215

-216

-217

-218

-219

-220

-221

-222

-223

-224

-225

-226

-227

-228

-229

-230

-231

-232

-233

-234

-235

-236

-237

-238

-239

-240

-241

-242

-243

-244

-245

