

**PROFILE ALIGNMENT AND GRADE OF
SANITARY SEWERS
TO BE CONSTRUCTED IN
LINDSEY AVE.
BETWEEN WASHINGTON BLVD. & N. LINE TR 15026
CARRON DR
80' ELY. OF W. LINE LOT 18 TR 148A**

**PRIVATE CONTRACT NO. 703
W. S. 35
SHEET ONE OF ONE SHEETS**

PREPARED IN THE OFFICES OF
THE KEMMERER ENGR. CO.

BY *John M. Kemmerer*
REG. C. E. NO. 872

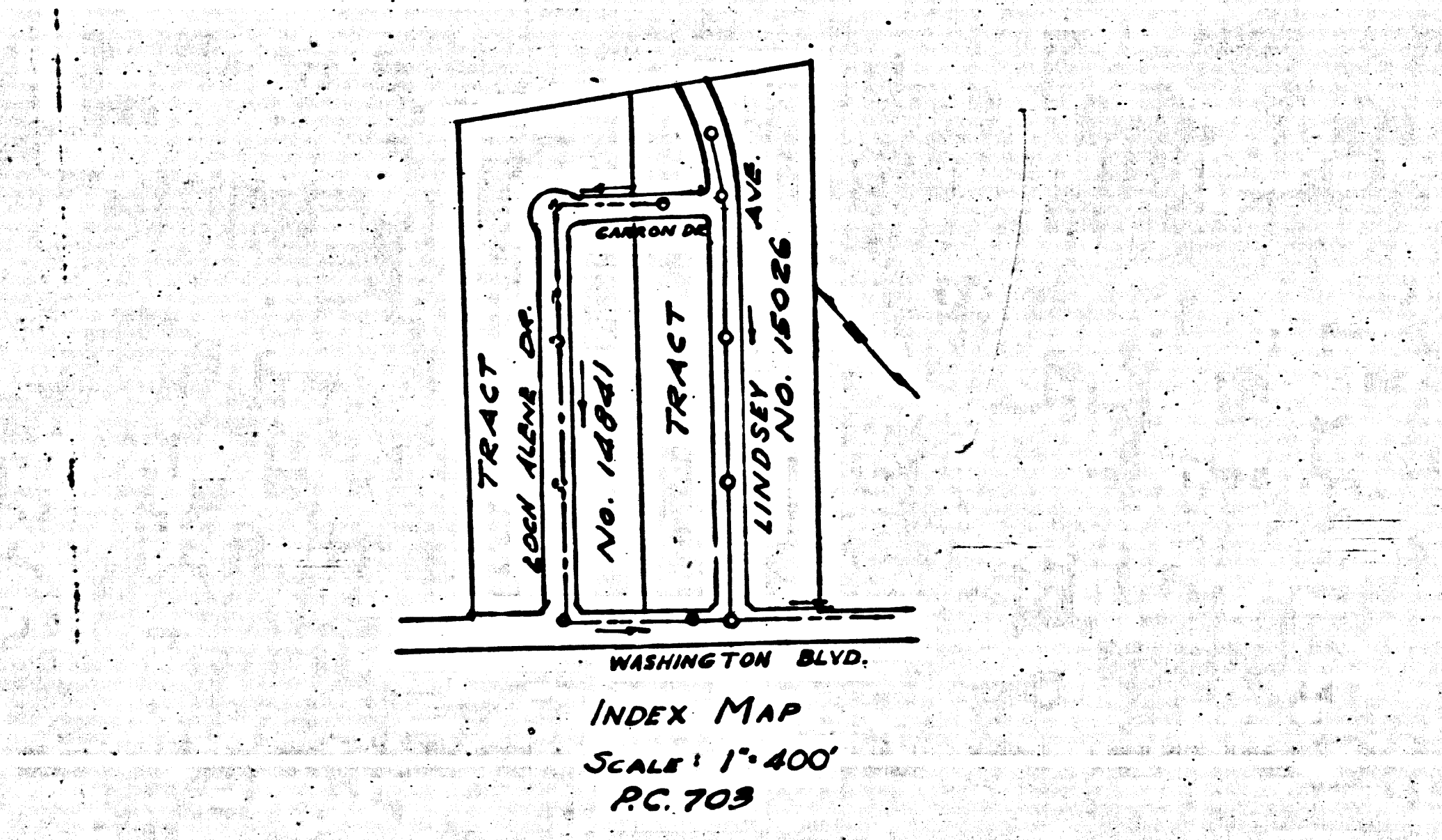
**FOR LEGEND
SEE PLAN NO. S-2-54**

NOTE:
GRADES TO WHICH THIS IMPROVEMENT IS TO BE CONSTRUCTED ARE SHOWN ON PLANS AND PROFILES. GRADE POINTS FOR TOP OF CURB, CENTER LINE OF STREET OR CENTER LINE OF ALLEY ARE SHOWN BY CIRCLES ON PROFILES AT ALL POINTS BETWEEN DESIGNATED POINTS THE GRADE SHALL BE ESTABLISHED SO AS TO CONFORM TO A STRAIGHT LINE DRAWN BETWEEN SAID DESIGNATED POINTS.
ELEVATIONS ARE IN FEET ABOVE U. S. G. S. DATUM OR MEAN SEA LEVEL.
THIS DRAWING AND THE DATA HEREON ARE HEREBY MADE A PART OF THE SPECIFICATIONS.
WORK SHALL BE CONSTRUCTED ACCORDING TO SPECIFICATIONS ON FILE IN THE OFFICE OF THE COUNTY ENGINEER AND SHALL BE PROSECUTED ONLY IN THE PRESENCE OF THE COUNTY ENGINEER.
BEFORE WORK CAN BE STARTED, THE CONTRACTOR MUST OBTAIN A PERMIT TO EXCAVATE IN COUNTY STREETS FROM THE U. S. COUNTY ROAD DEPT., 1104 HALL OF RECORDS AND MAKE A DEPOSIT WITH THE COUNTY ENGINEER, 700 UNION LEAGUE BUILDING, SUFFICIENT TO COVER THE COST OF CONSTRUCTION INSPECTION AND RECORD PLANS.
IF WORK IS TO BE DONE IN A STATE HIGHWAY, A PERMIT MUST BE OBTAINED FROM THE STATE CALIFORNIA, DIVISION OF HIGHWAYS, 808 STATE BUILDING, AFTER MAKING THE DEPOSIT WITH THE COUNTY ENGINEER.

COUNTY OF LOS ANGELES, CALIFORNIA

APPROVED *[Signature]* COUNTY ENGINEER
APPROVED *[Signature]* CHIEF ENGINEER OF COUNTY SANITATION DISTRICT

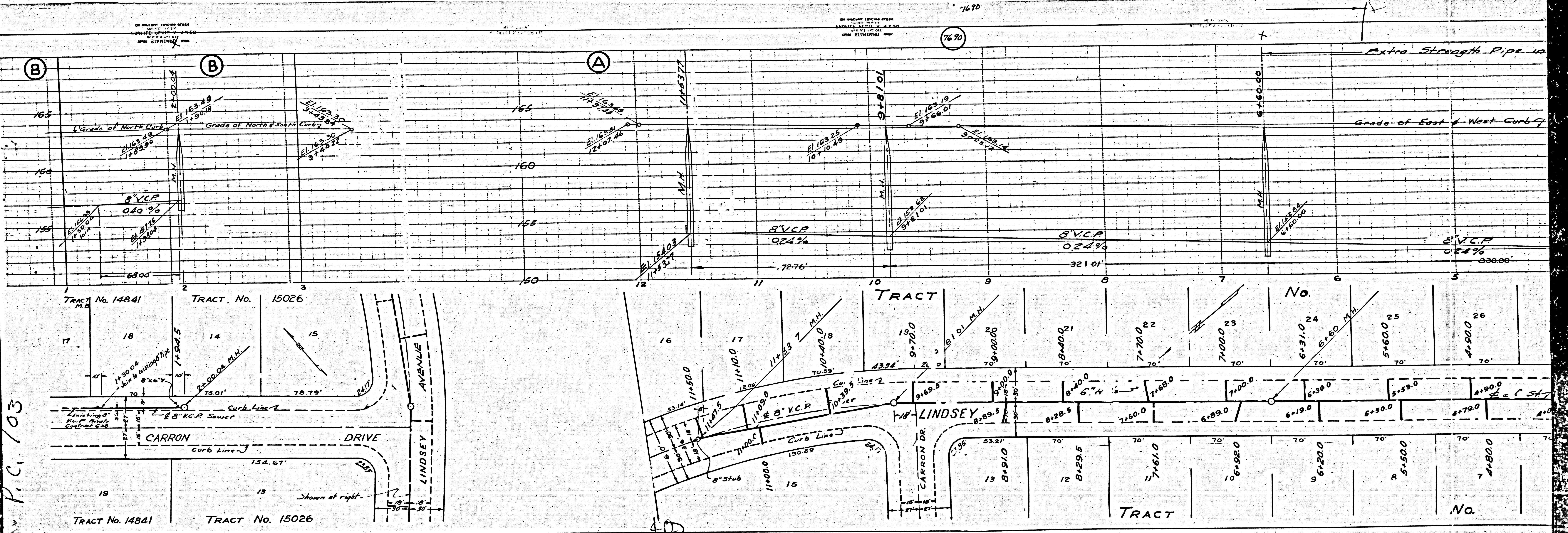
CHECKED BY *[Signature]* Dec. 22 1947
OFFICE OF COUNTY ENGINEER, 808 S. S. NO. 6325



FINAL C.E.T.P. 3/15/48

M5

BC 403



P.C. 103