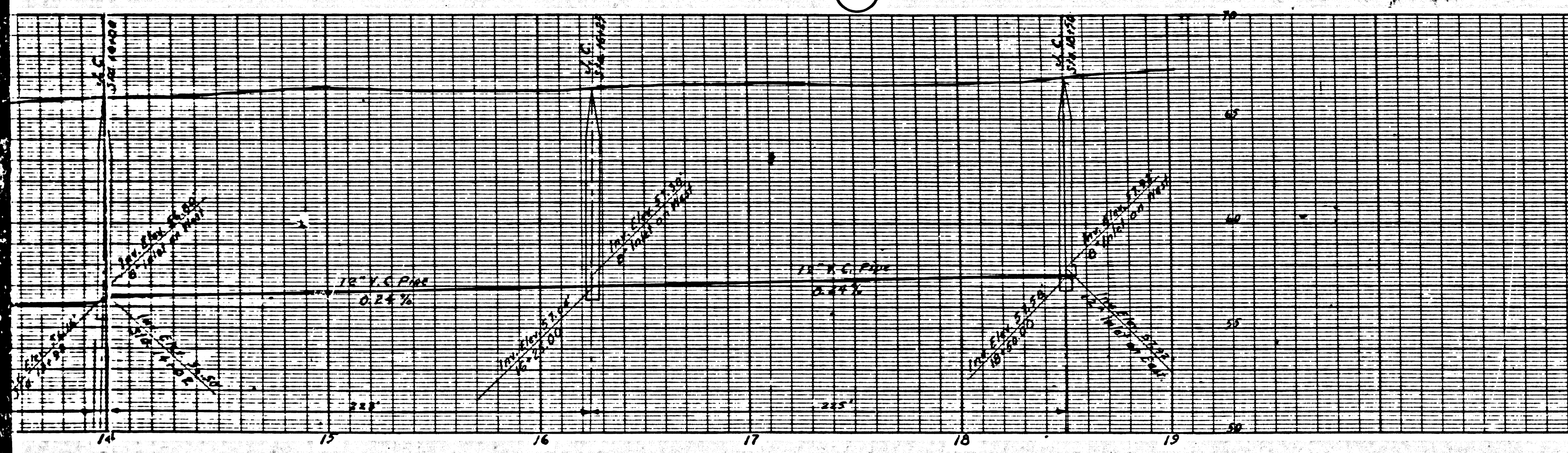


1819



USE STANDARD STRENGTH PIPE EXCEPT AS NOTED.  
 USE CEMENT MORTAR FOR ALL VITRIFIED CLAY PIPE JOINTS.  
 INCREASE FOUR FEET OF SEWER AT POINTS OF INTERFERENCE WITH POLES AS PER S-1119.

ALL STRUCTURES SHALL BE BRICK SEWER STRUCTURES AS PER PLAN NO. S-4-104.  
 USE STANDARD MANHOLE FRAMES AND COVERS AS PER PLAN NO. S-4-114.  
 CONSTRUCT TOPS OF ALL STRUCTURES HEIGHTS OF WAY 2" ABOVE FINISHED GRADE.  
 RESURFACE ALL TRENCHES WITHIN PAVED AREA TO MEET LOS ANGELES COUNTY ROAD DEPARTMENT OR STATE HIGHWAY REQUIREMENTS.

NO REVISIONS SHALL BE MADE IN THESE PLANS WITHOUT APPROVAL OF THE COUNTY ENGINEER.  
 NO REPRESENTATIVE OF THE COUNTY ENGINEER WILL SURVEY OR LAY OUT ANY PORTION OF THE WORK.  
 THE OWNER OR HIS AUTHORIZED REPRESENTATIVE SHALL FURNISH THE COUNTY ENGINEER WITH  
 BRASS SHEETS AND STATIONS OF ALL HOME CONNECTIONS AND Y BRANCHES AND SHALL PROVIDE  
 STAKES FOR THEM AT THEIR PROPER LOCATIONS WITH STATIONING PLAINLY MARKED.  
 ANY CHANGE OF LOCATION SHALL BE REGISTERED IN WRITING BY THE OWNER OR HIS REPRESENTATIVE.

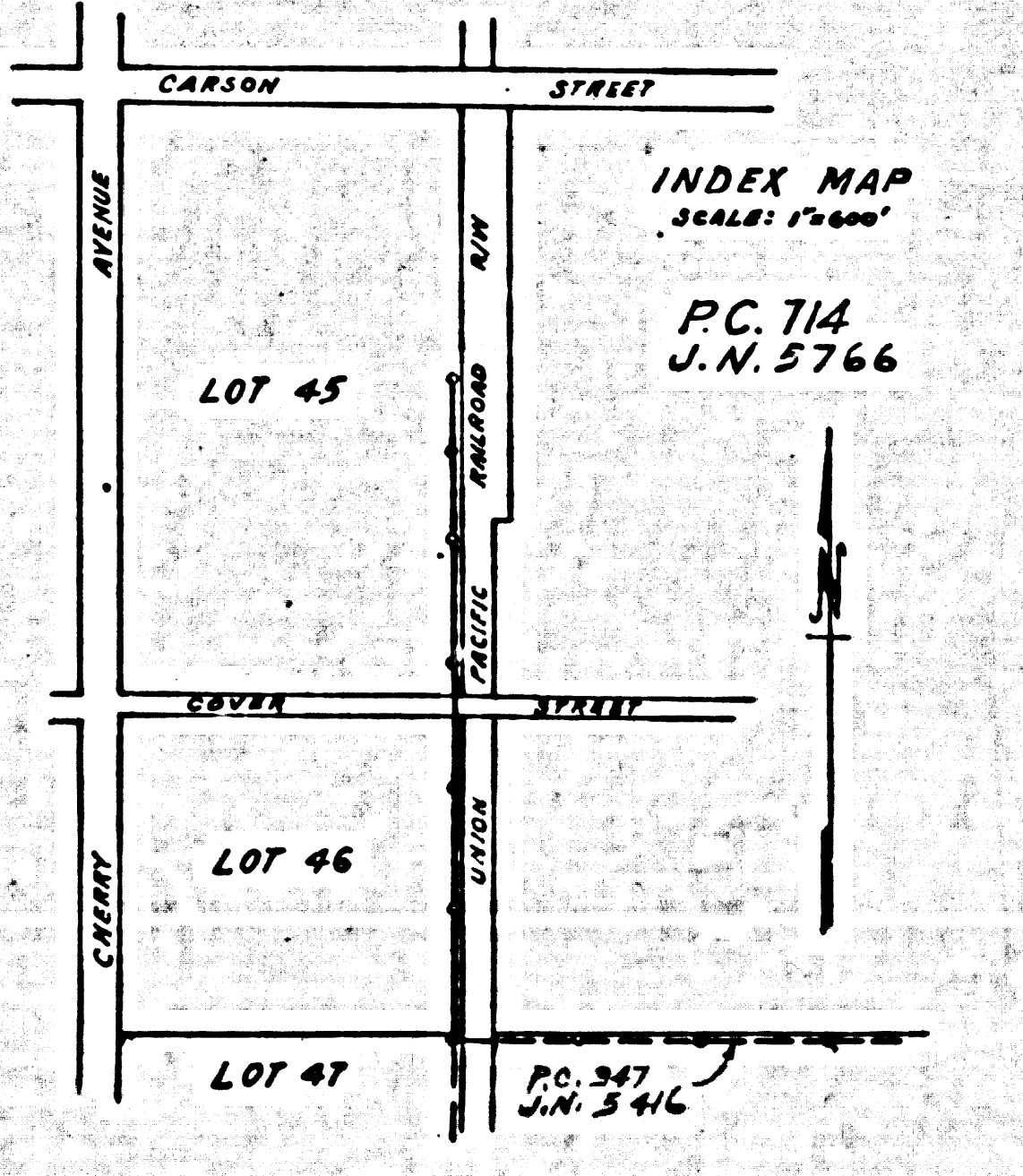
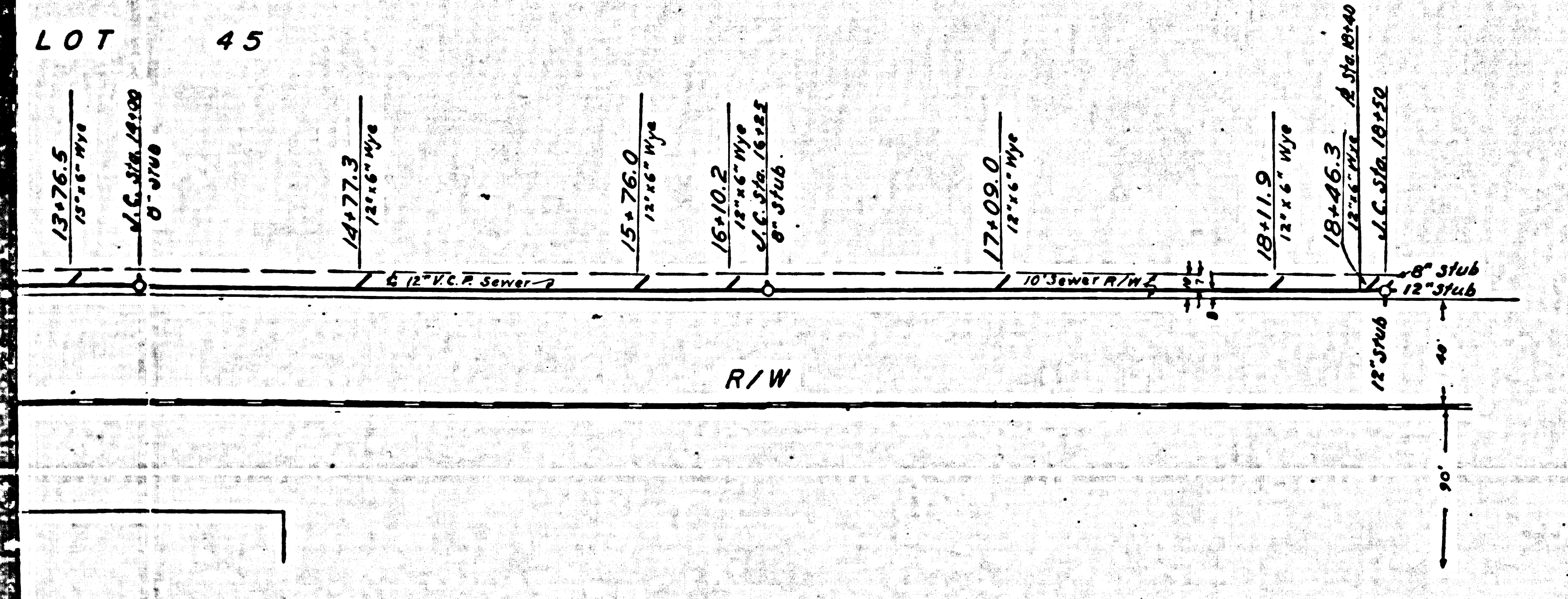
PROFILE ALIGNMENT AND GRADE OF  
**SANITARY SEWER**  
 TO BE CONSTRUCTED IN  
**SANITARY SEWER EASEMENT**  
 IN  
 PROPERTY OF MONTANA LAND CO.  
 ALONG WEST LINE OF UNION PACIFIC R. R. R/W  
 IN TRACT NO. 8884 N. B. 171-24-201

PRIVATE CONTRACT NO. 714  
 W.S. 130  
 ONE SHEET

SCALE: Vert. 1"=4'  
 Horiz. 1"=40'

JANUARY, 1948

PREPARED IN THE OFFICES OF  
**GEORGE G. BLACKMER**  
 Civil Engineer  
 871 George G. Blackmer  
 Ref. C.E. No. 1111



FOR LEGEND  
 See Plan No. S-4-64

NOTE:  
 Grades to which this improvement is to be constructed are shown on Plans and Profiles.  
 Grade points for top of curb, center line of streets, or center line of alley are shown by  
 circles on Profiles. At all points between designated points the grades shall be established  
 as to conform to a straight line between designated points.  
 Elevations are in feet above U. S. G. S. Datum or Mean Sea Level.  
 This drawing and the data hereon are hereby made a part of the specifications.  
 The Engineer and shall be prosecuted only in the presence of the County Engineer.  
 Before work can be started, the Contractor must obtain a permit to excavate in  
 County Streets from the L. A. County Road Dept. 1104 Hall of Records and make  
 a deposit with the County Engineer, 700 Fashion League Building sufficient to cover  
 the cost of Construction Inspection and Record Plans.

COUNTY OF LOS ANGELES, CALIFORNIA

APPROVED *[Signature]*  
 County Engineer

APPROVED *[Signature]* OFFICE ENGINEER  
 For Chief Engineer of County  
 Sanitation District No. 3

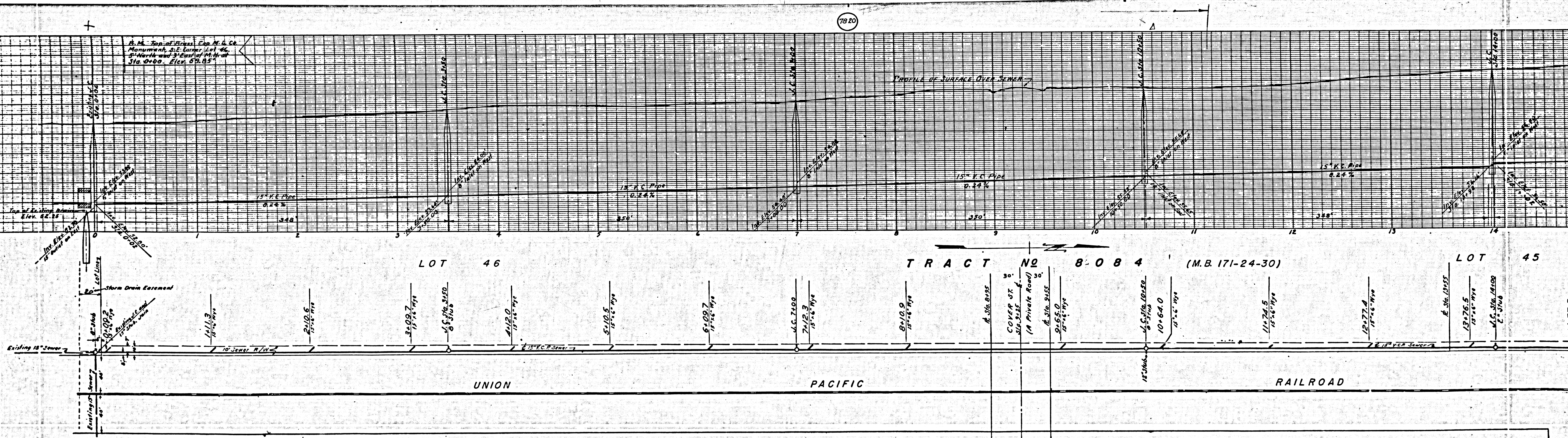
CHECKED *[Signature]* JAN. 12, 1948  
 Office of County Engineer, Dep. C. E. No. 6222

Final Ck. TRP. 4/13/48

114

LD

17620



42

M8

M8

