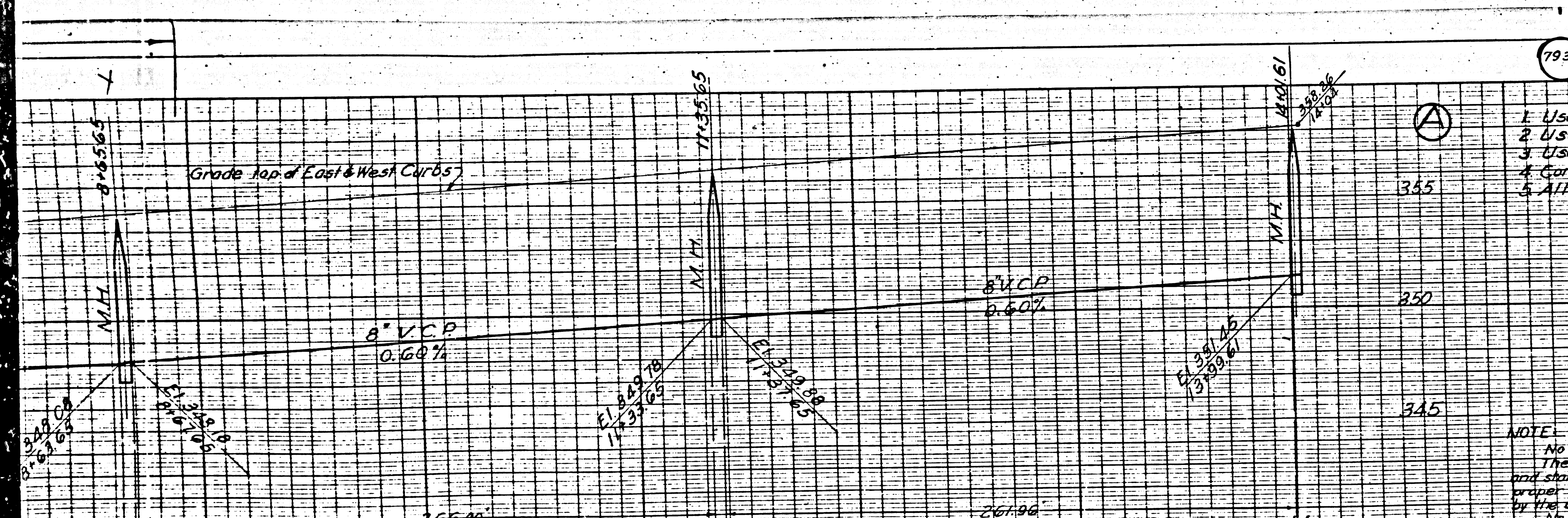


7932



1. Use standard manhole frames and covers, S-a-117.
2. Use standard strength pipe.
3. Use cement mortar for all vitrified clay pipe joints.
4. Construct house connections with invert at property line 5 feet below curb grade, except as noted.
5. All structures shall be brick sewer structures, S-a-104, except as noted.

NOTE: No representative of the County Engineer will survey or lay out any portion of the work. The owner or his authorized representative shall furnish the County Engineer with grade sheets and stations of all house connections and Y branches and shall provide stakes, markers, at least proper locations with stationing plainly marked. Any change in location shall be requested in writing by the owner or his representative. No revisions shall be made in these plans without approval of the County Engineer.

PROFILE ALIGNMENT AND GRADE OF
SANITARY SEWERS
 TO BE CONSTRUCTED IN
ASHMONT AVENUE
 BETWEEN MAYFLOWER AVE AND LONGDEN AVE
FAIRGREEN AVENUE
 BETWEEN LARKFIELD ST AND LONGDEN AVE
LARKFIELD STREET
 BETWEEN MAYFLOWER AVE AND LONGDEN AVE
MAYFLOWER AVENUE
 BETWEEN LIVE OAK AVE AND LONGDEN AVE

PRIVATE CONTRACT NO 719
 W.S. 46
 HORIZ. 1"=40'
 VERT. 1"=4'
 JAN. 1948

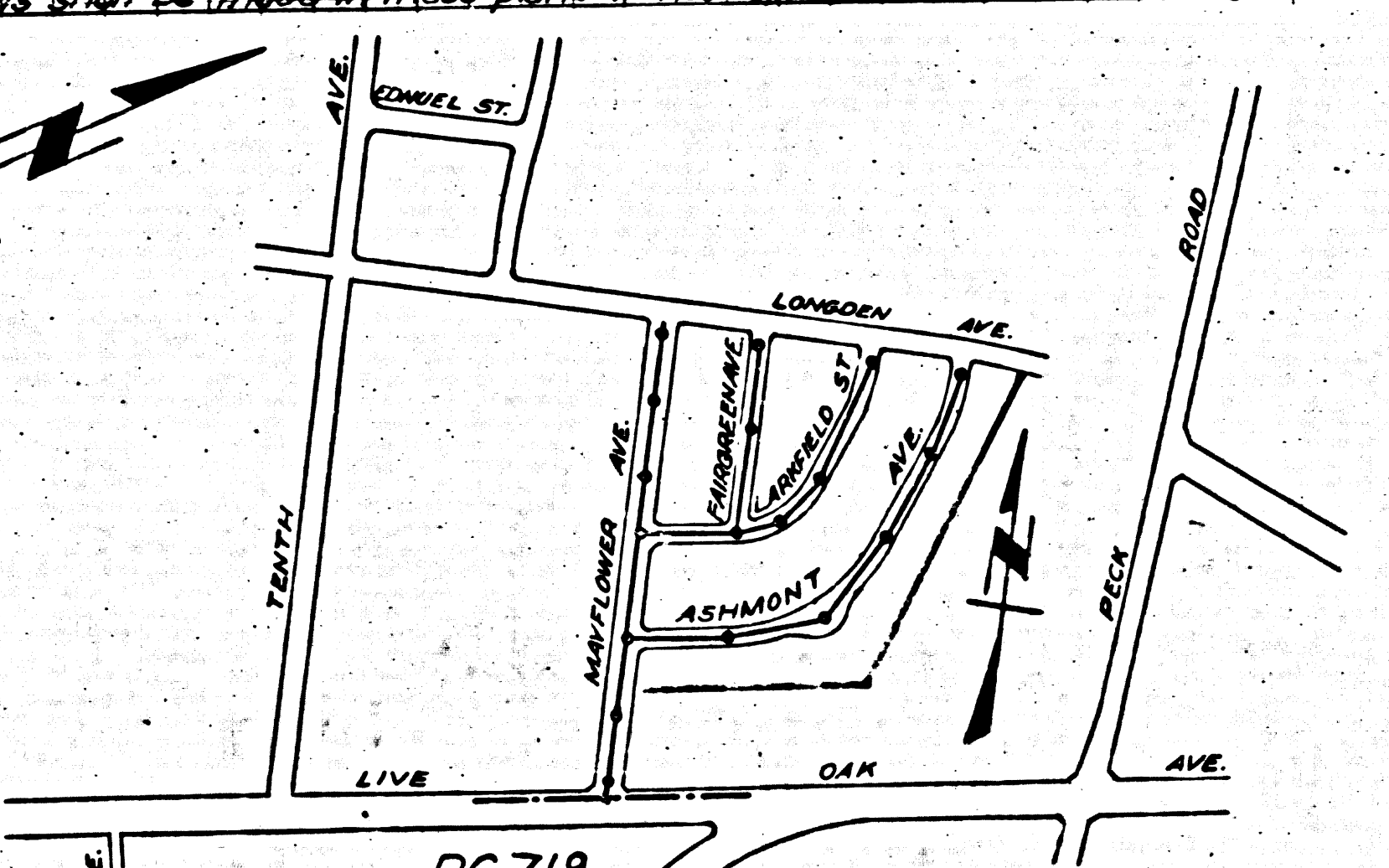
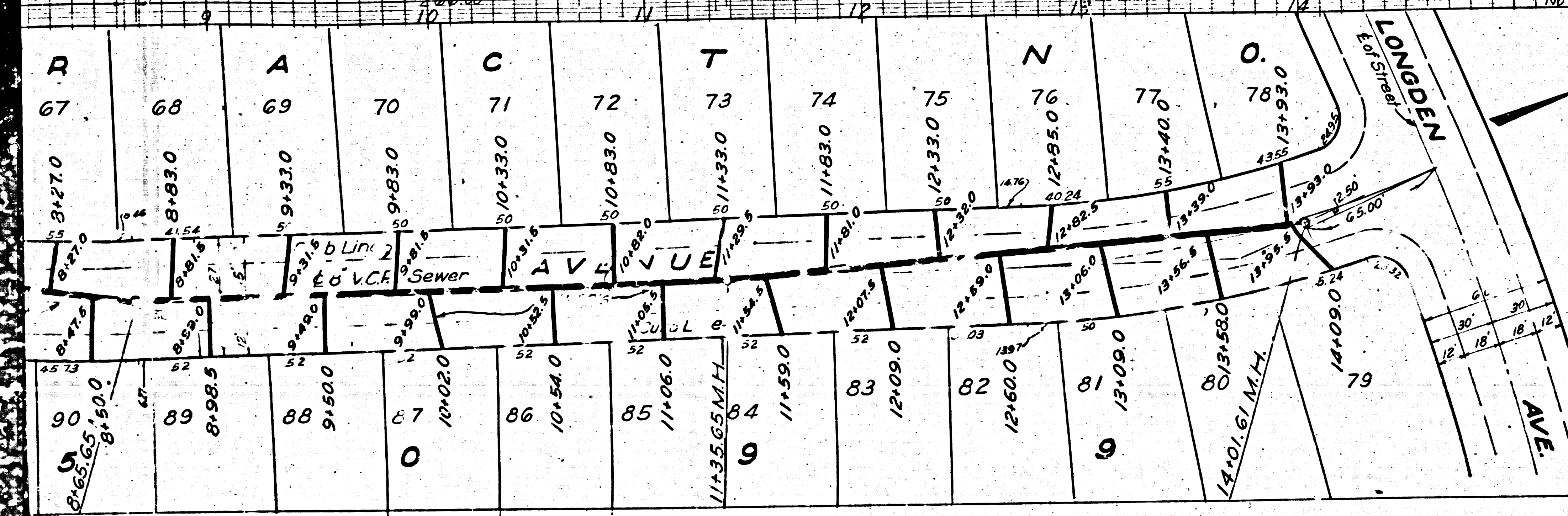
PREPARED IN THE OFFICES OF
HAROLD A. BARNETT

BY: *Harold A. Barnett*
 R.E. 1816

FOR LEGEND
 SEE PLAN No. S-464

NOTE: Grades to which this improvement is to be constructed are shown on plans and profile. Grade points for top of curb, center line of street, or center line of alley are shown by circles on profiles. At all points between designated points the grade shall be established so as to conform to a straight line drawn between said designated points. Elevations are in feet above U.S.G.S datum or mean sea level. This drawing and the data hereon are hereby made a part of the specifications. Work shall be constructed according to specifications on file in the office of the County Engineer and shall be prosecuted only in the presence of the County Engineer. Before work can be started, the contractor must obtain a permit to excavate in County streets from the L.A. County Road Dept., 211 S. Main Street, and make a deposit with the County Engineer, 700 Fashion League Bldg, sufficient to cover the cost of construction inspection and Record Plans. If work is to be done in a State Highway a permit must be obtained from the State of California Division of Highways, 808 State Bldg, after making the deposit with the County Engineer.

COUNTY OF LOS ANGELES, CALIFORNIA



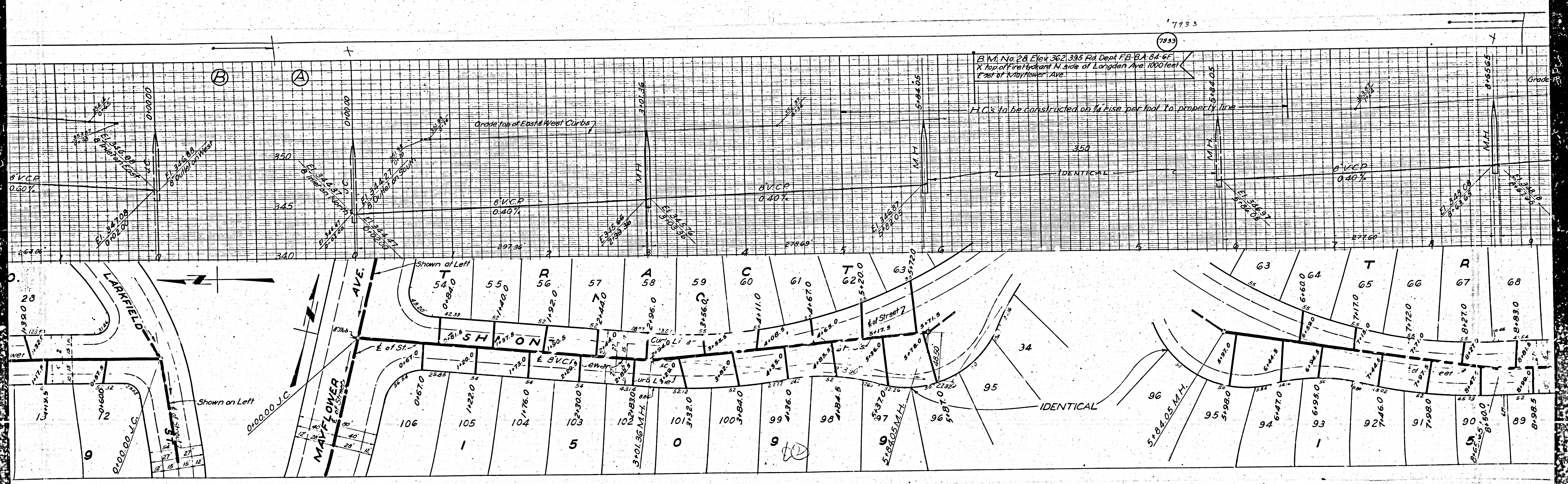
INDEX MAP
 Scale 1"=600'

Final Ck T.I.P. 4/22/48

APPROVED *[Signature]*
 COUNTY ENGINEER

APPROVED *[Signature]*
 CHIEF ENGINEER OF COUNTY
 SANITATION DISTRICT NO. 16

CHECKED BY: *J.D. Moore* MAR 23 1948
 Office of County Engineer, Pkg. C.E. No. 6322



B.M. No. 28 Elev 362.335 Rd. Dept. FB-B.A. 84-67
 X Top of First Hydrant N. side of Longden Ave. 1000 feet
 East of Mayflower Ave.

F.I.C.'s to be constructed on a rise per foot to property line

Grades Top of East & West Curbs

IDENTICAL

8 V.C.P. 0.40%

Shown at Left

Shown on Left

IDENTICAL

5+2.405 M.H.

5+2.405 M.H.

0+00.00 J.C.

0+00.00 J.C.

MAVFLOWER AVE.

LARKFIELD

SHANNON

E of St.

E of St.

E of St.

E of St.

E of St.

E of St.

E of St.

E of St.

E of St.

E of St.

54.0

55.0

56.0

57.0

58.0

59.0

60.0

61.0

62.0

63.0

64.0

65.0

66.0

67.0

68.0

106

105

104

103

102

101

100

99

98

97

96

95

94

93

92

1

5

0

9

9

9

9

9

9

9

9

9

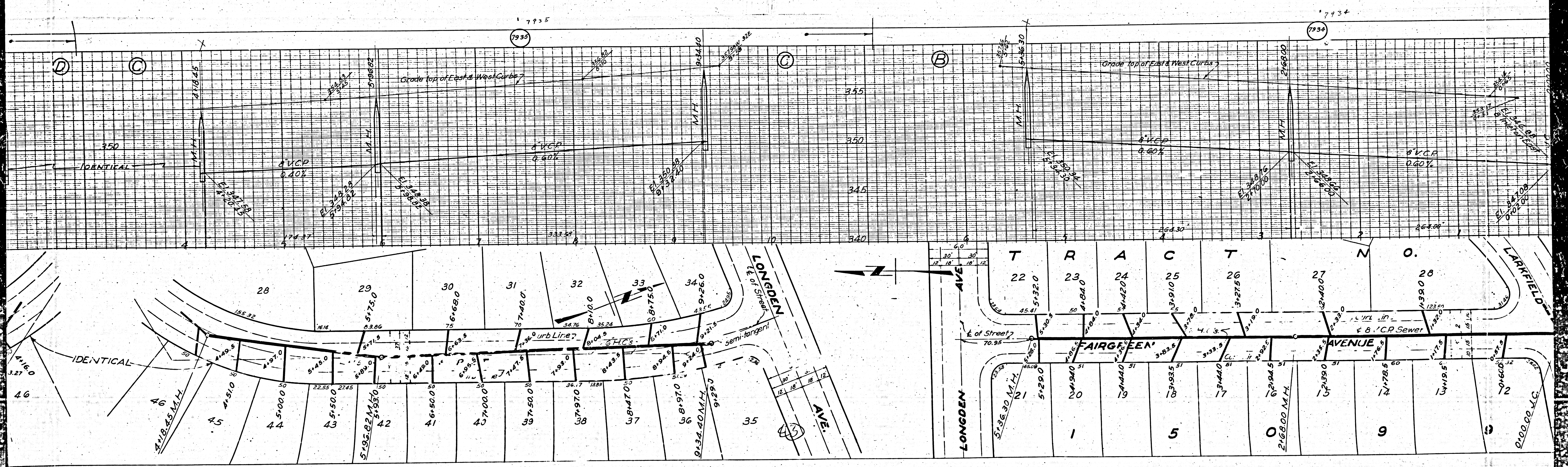
9

9

9

M

M



7935

7934

Grade top of East & West Curbs

Grade top of East & West Curbs

T R A C E N O

FAIRGREEN AVENUE

LONGDEN AVE

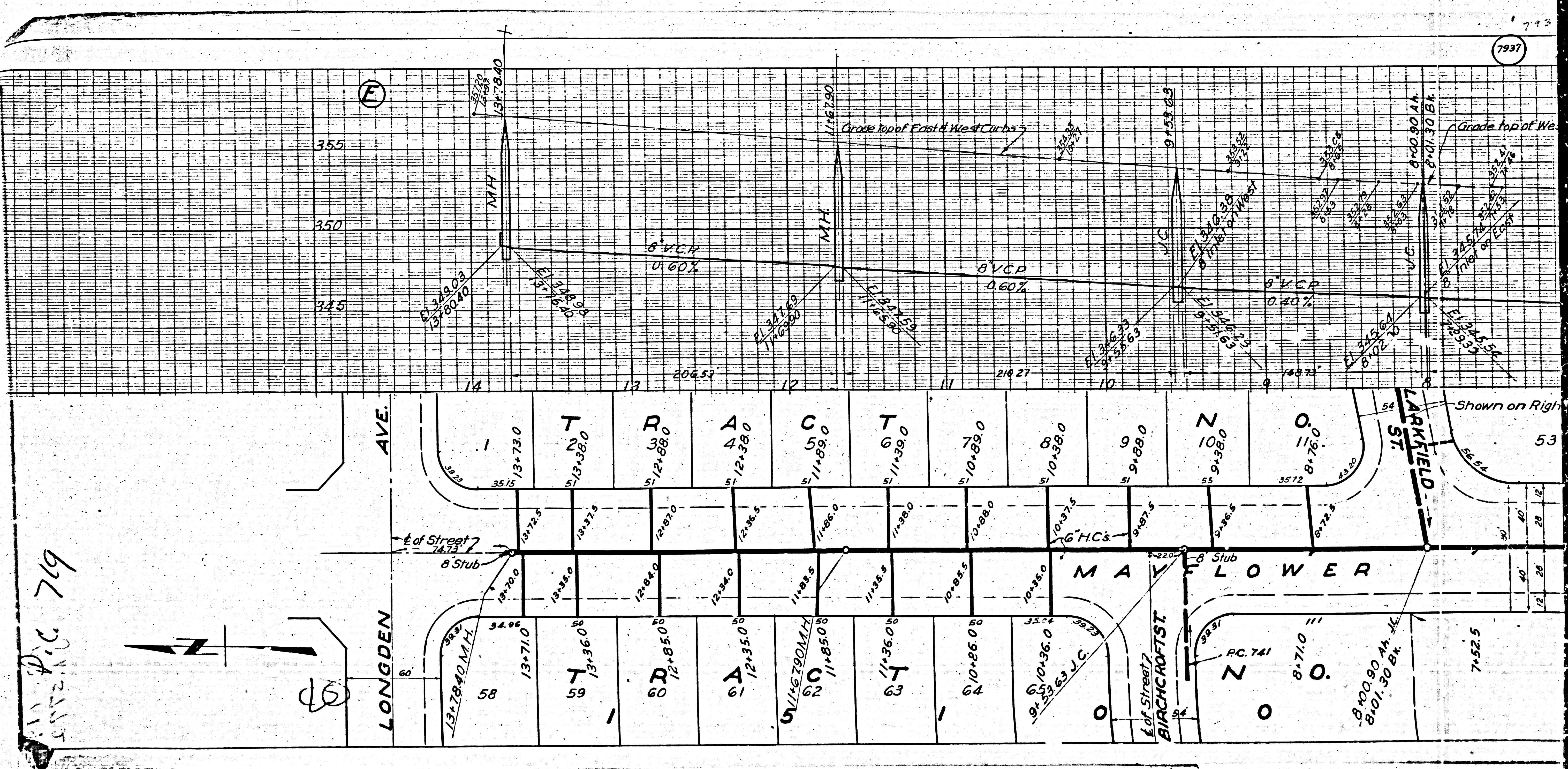
LONGDEN AVE

FAIRGREEN AVE

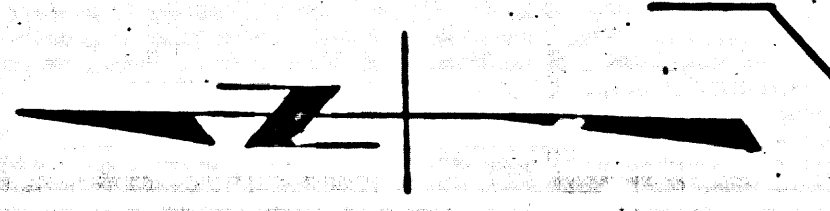
FAIRGREEN AVE

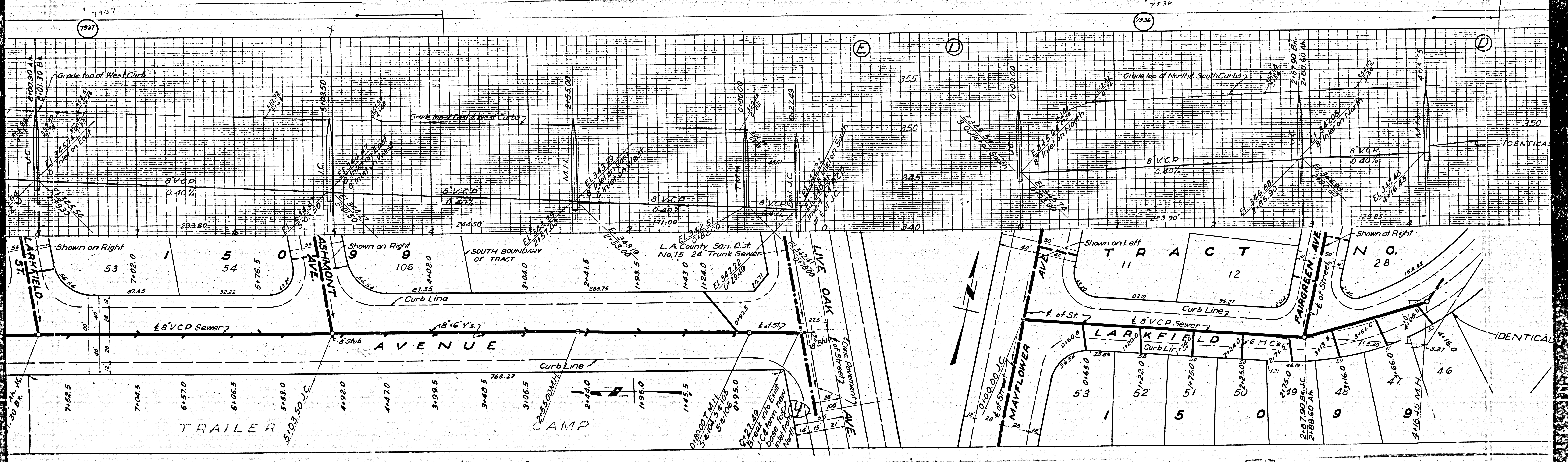
LARFIELD AVE

LARFIELD AVE



Pic 719
 5172





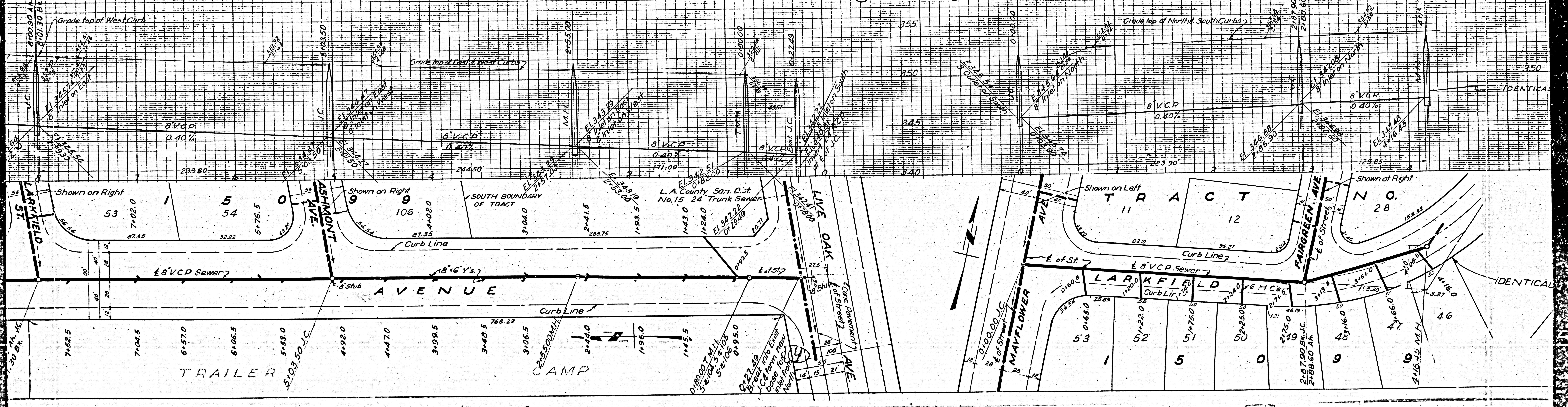
7937

7936

(E)

(D)

(D)



7937

7936

(E)

(D)

(D)