

NO. 7880
SCALE 1" = 100'
DATE 1/21/48

7880

USE EXTRA STRENGTH PIPE

USE EXTRA STRENGTH PIPE

BM - 5.3 M.Y. Inv. Elev. 192.08
Imperial Highway & Normandie Ave

DOUBLE SCALE

PROFILE, ALIGNMENT AND GRADE OF
SANITARY SEWERS
TO BE CONSTRUCTED IN
IMPERIAL HIGHWAY
BETWEEN NORMANDIE AVE AND A POINT 382' WEST OF NORMANDIE AVE

PRIVATE CONTRACT NO. 724
W.S. 26
ONE SHEET

PREPARED IN THE OFFICES OF

ROBIN A. GRAVES ENGINEERING CO.
BY: *Robin A. Graves*
REG. P.E. No. 6107

FOR LEGEND
SEE PLAN NO. 5-2-64

NOTE:
GRADES TO WHICH THIS IMPROVEMENT IS TO BE CONSTRUCTED ARE SHOWN ON PLANS AND PROFILE.
GRADE POINTS FOR TOP OF CURB, CENTER LINE OF STREET OR CENTER LINE OF ALLEY ARE SHOWN BY
CIRCLES ON PROFILE. AT ALL POINTS BETWEEN DESIGNATED POINTS THE GRADE SHALL BE ESTABLISHED
SO AS TO CONFORM TO A STRAIGHT LINE DRAWN BETWEEN SAID DESIGNATED POINTS.
ELEVATIONS ARE IN FEET ABOVE U.S.C.S. DATUM OR MEAN SEA LEVEL.
THIS DRAWING AND THE DATA HEREON ARE HEREBY MADE A PART OF THE SPECIFICATIONS.
WORK SHALL BE CONSTRUCTED ACCORDING TO SPECIFICATIONS ON FILE IN THE OFFICE OF THE
COUNTY ENGINEER AND SHALL BE PROSECUTED ONLY IN THE PRESENCE OF THE COUNTY ENGINEER.
BEFORE WORK CAN BE STARTED, THE CONTRACTOR MUST OBTAIN A PERMIT TO EXCAVATE IN
COUNTY STREETS FROM THE L.A. COUNTY ROAD DEPT., 501 N. MAIN ST. AND MAKE A DEPOSIT
WITH THE COUNTY ENGINEER, 700 FARMERS LEASER BUILDING, SUFFICIENT TO COVER THE COST
OF CONSTRUCTION INSPECTION AND RECORD PLANS.

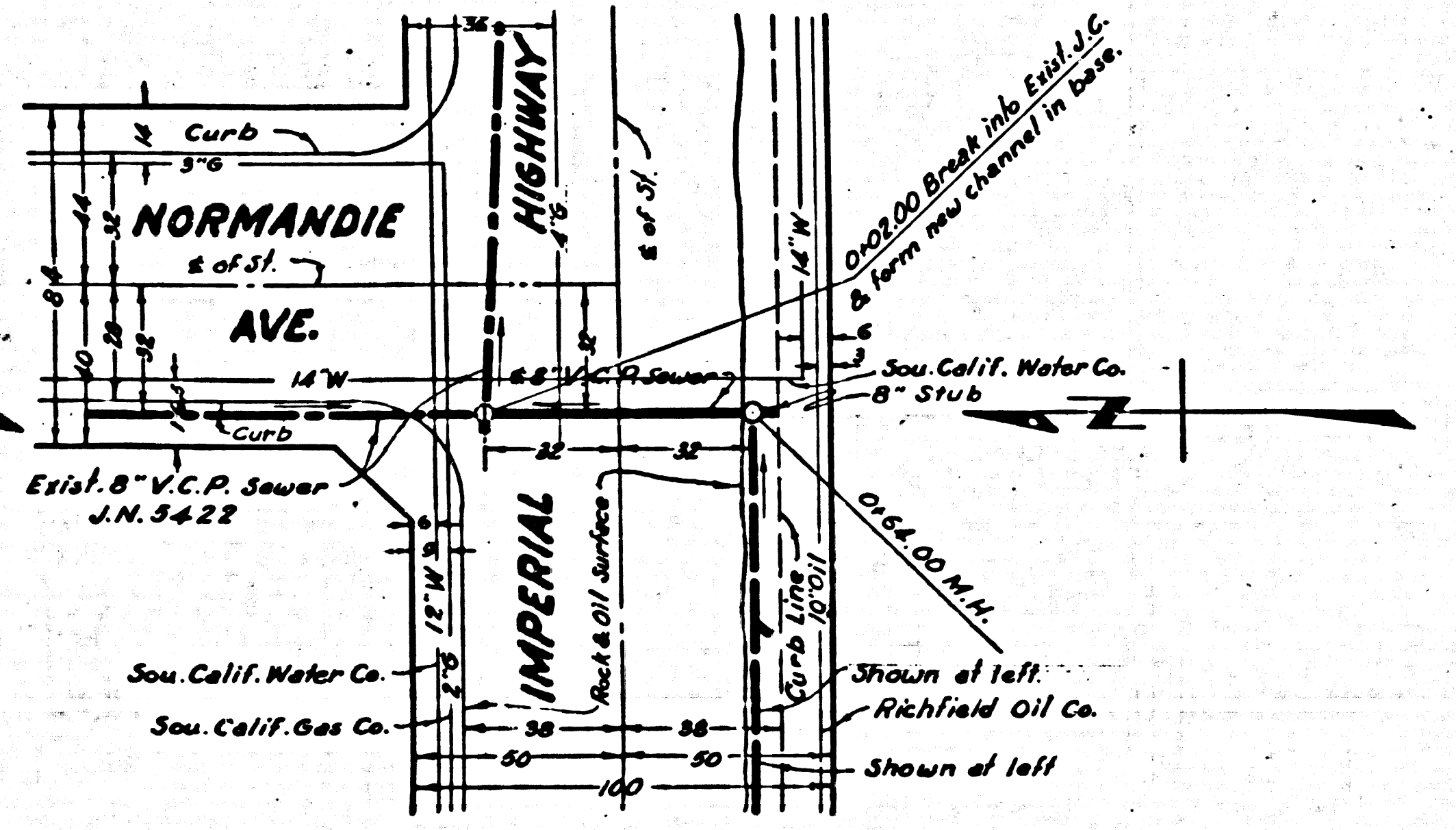
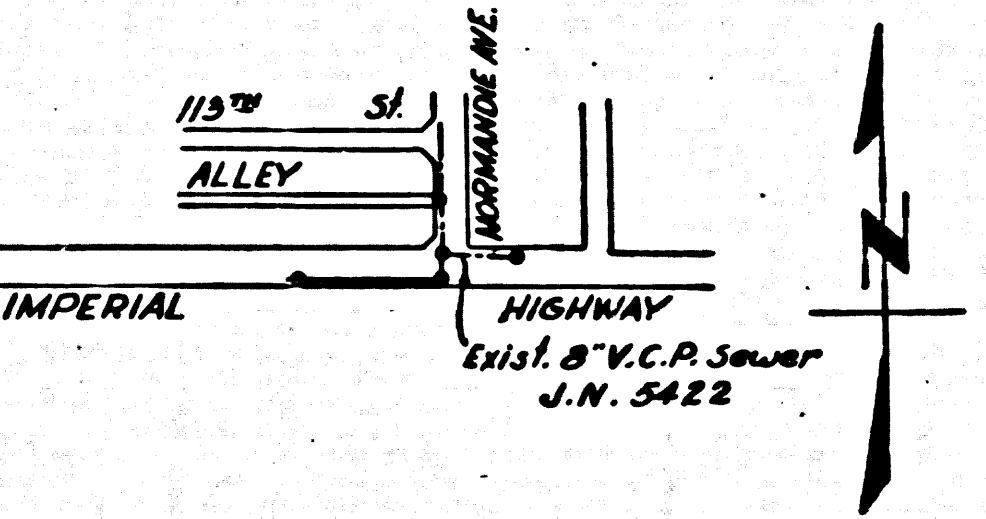
COUNTY OF LOS ANGELES, CALIFORNIA
APPROVED: *[Signature]*
COUNTY ENGINEER
APPROVED: *[Signature]*
ACTING CHIEF ENGINEER, THE COUNTY
SANITATION DISTRICT NO. 4

CHECKED BY: *[Signature]* Jan. 23, 1948
OFFICE OF COUNTY ENGINEER, LOS ANGELES, CALIF.
6722

- (1) USE STANDARD MANHOLE FRAMES AND COVERS, 3'-6" X 3'-6"
- (2) USE EXTRA-STRENGTH PIPE
- (3) USE CEMENT MORTAR FOR ALL VITRIFIED CLAY RISE JOINTS
- (4) RESURFACE ALL TRENCH WITHIN PAVED AREAS TO MEET LOS ANGELES COUNTY ROAD DEPT'S REQUIREMENTS.
- (5) ALL STRUCTURES SHALL BE BRICK SEWER STRUCTURES, 3'-6" X 3'-6"

NOTE:
NO REPRESENTATIVE OF THE COUNTY ENGINEER WILL SURVEY OR LAY OUT ANY PORTION OF THE WORK.
THE OWNER OR HIS AUTHORIZED REPRESENTATIVE SHALL FURNISH THE COUNTY ENGINEER WITH
GRADE INFORMATION, SHOWN ON ALL HOUSE CONNECTIONS AND Y BRANCHES, AND SHALL PROVIDE A PLAN
FOR THE LOCATION OF ALL HOUSE CONNECTIONS WITH THE COUNTY ENGINEER'S OFFICE.
LOCATION SHALL BE REQUESTED IN WRITING BY THE OWNER OR HIS REPRESENTATIVE.
NO REVISIONS SHALL BE MADE IN THESE PLANS WITHOUT APPROVAL OF THE COUNTY ENGINEER.

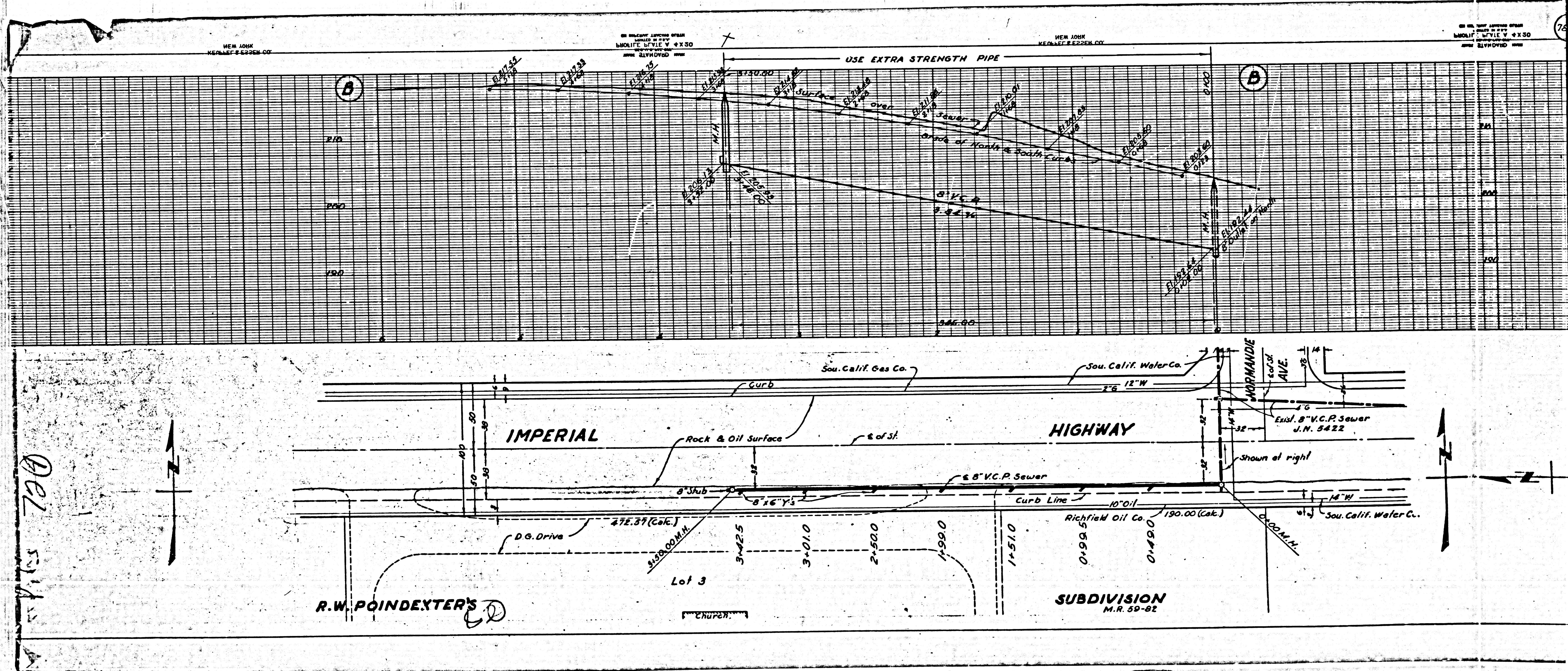
P.C. NO. 724
INDEX MAP
Scale: 1" = 600'



Final Ct. T.P. 4/24/48

EO

BC 1005



Dec 15/11

R.W. POINDEXTER'S

SUBDIVISION
 M.R. 59-02