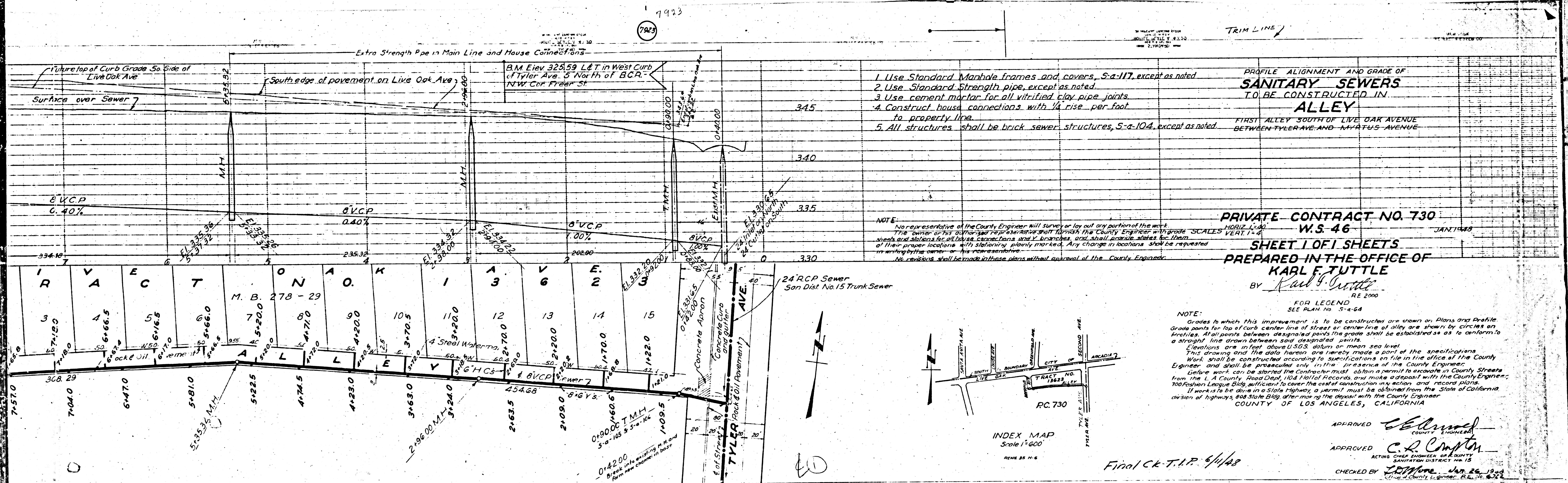


7923



1. Use Standard Manhole frames and covers, S-a-117, except as noted.
2. Use Standard Strength pipe, except as noted.
3. Use cement mortar for all vitrified clay pipe joints.
4. Construct house connections with 1/4" rise per foot to property line.
5. All structures shall be brick sewer structures, S-a-104, except as noted.

PROFILE ALIGNMENT AND GRADE OF
SANITARY SEWERS
 TO BE CONSTRUCTED IN
ALLEY
 FIRST ALLEY SOUTH OF LIVE OAK AVENUE
 BETWEEN TYLER AVE AND ARCADIA AVENUE

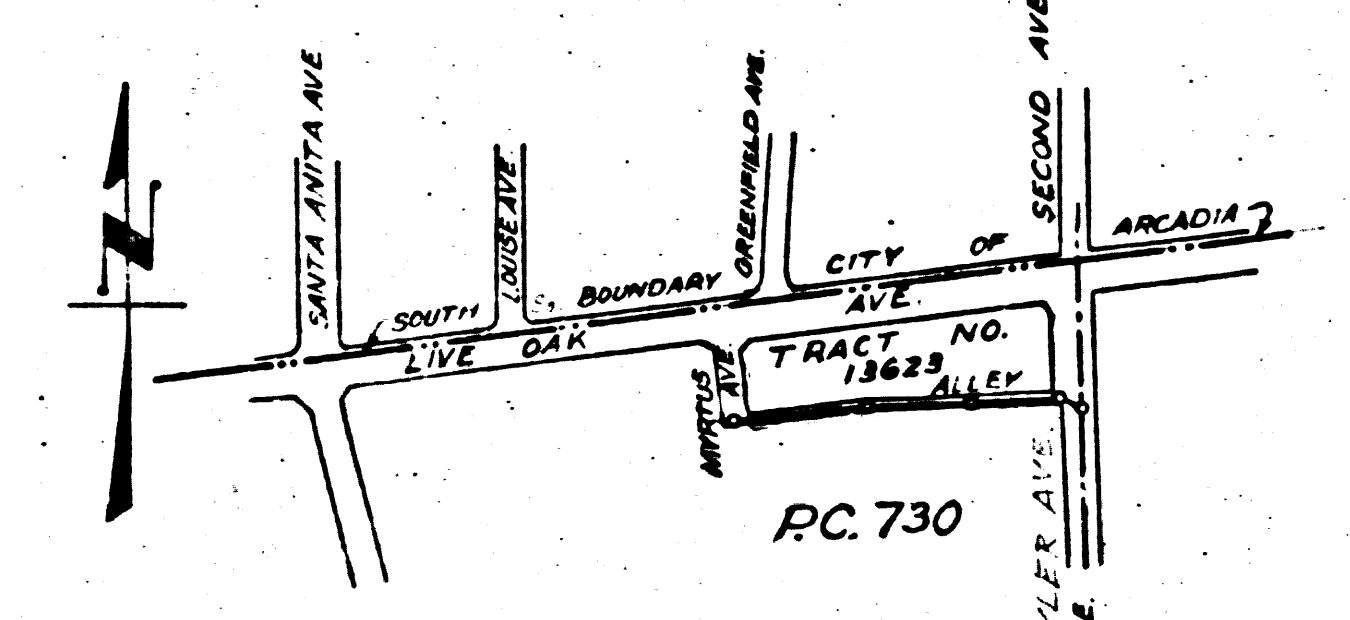
NOTE:
 No representative of the County Engineer will survey or lay out any portion of the work.
 The owner or his authorized representative shall furnish the County Engineer with grade stakes and stations for all pipe connections and Y branches, and shall arrange stakes for them at their proper locations with stationing plainly marked. Any change in locations shall be requested in writing by the owner or his representative.
 No revisions shall be made in these plans without approval of the County Engineer.

PRIVATE CONTRACT NO. 730
 W.S. 46
 JAN 11 1948

SHEET 1 OF 1 SHEETS
 PREPARED IN THE OFFICE OF
KARL F. TUTTLE
 BY *Karl F. Tuttle*
 RE 2000

FOR LEGEND
 SEE PLAN No. S-a-64

NOTE:
 Grades to which this improvement is to be constructed are shown on Plans and Profile. Grade points for top of curb, center line of street or center line of alley are shown by circles on profiles. All points between designated points the grade shall be established as to conform to a straight line drawn between said designated points.
 Elevations are in feet above U.S.G.S. datum or mean sea level.
 This drawing and the data hereon are hereby made a part of the specifications.
 Work shall be constructed according to specifications on file in the office of the County Engineer and shall be prosecuted only in the presence of the County Engineer.
 Before work can be started the Contractor must obtain a permit to excavate in County Streets from the L.A. County Road Dept. 104 Hall of Records, and make deposit with the County Engineer, 700 Fashion League Bldg, sufficient to cover the cost of construction in action and record plans.
 If work is to be done in a State Highway, a permit must be obtained from the State of California division of highways, 844 State Bldg after making the deposit with the County Engineer.
 COUNTY OF LOS ANGELES, CALIFORNIA



APPROVED *[Signature]*
 COUNTY ENGINEER
 APPROVED *[Signature]*
 ACTING CHIEF ENGINEER OF COUNTY
 SANITATION DISTRICT NO. 15
 CHECKED BY *[Signature]* JAN 26 1948
 CITY OF COUNTY ENGINEER, P.L.C. 11-6-48

Final CK-T.I.P. 6/1/48