

- Spec. No. 1147 Standard 13 R. S.W. of Int. of El Segundo Blvd. & Central Ave. Co. Rd. Dept. P.D. 8A 140, pg. 6A, Elee 5332**
1. Use Standard Manhole Frames and Covers, S-a-117
 2. Use Standard Strength Pipe
 3. Use Cement Mortar for all Vitrified Clay Pipe Joints.
 4. Resurface all Trench within Paved Area to meet L.A. County Road Dept. Specifications
 5. Excavate four feet of Street at points of interference with Poles as per S-a-119.
 6. All Structures shall be Brick Sewer Structures, S-a-104
 7. Construct tops of Structures in Rights of Way above finished Grade.
 8. Construct House Connections with invert at Property Line 5' below curb grade.
- Note:**
No representative of the County Engineer will survey or by out any portion of the work. The owner or his authorized representative shall furnish the County Engineer with Corrected and Stationed Locality, House Connections and V. Ranges and shall position stakes for lines of their proper locations with stationing plainly marked. Any change of location shall be requested in writing by the owner to the representative. No revisions shall be made in these Plans without approval of the County Engineer.

PROFILE, ALIGNMENT AND GRADE OF SANITARY SEWERS TO BE CONSTRUCTED IN

EL SEGUNDO BOULEVARD
BETWEEN CENTRAL AVE. & A POINT 132.23' WESTERN OF E. OF BELHAVEN AVE.

131ST STREET
BETWEEN CENTRAL AVE. & CLOVIS AVE.

FIRST ALLEY WEST OF CENTRAL AVE. & SEWER W. TR. No. 14728
BETWEEN 131ST ST. & EL SEGUNDO BLVD.

SANITARY SEWER RIGHTS OF WAY
IN TRACT NO. 14228

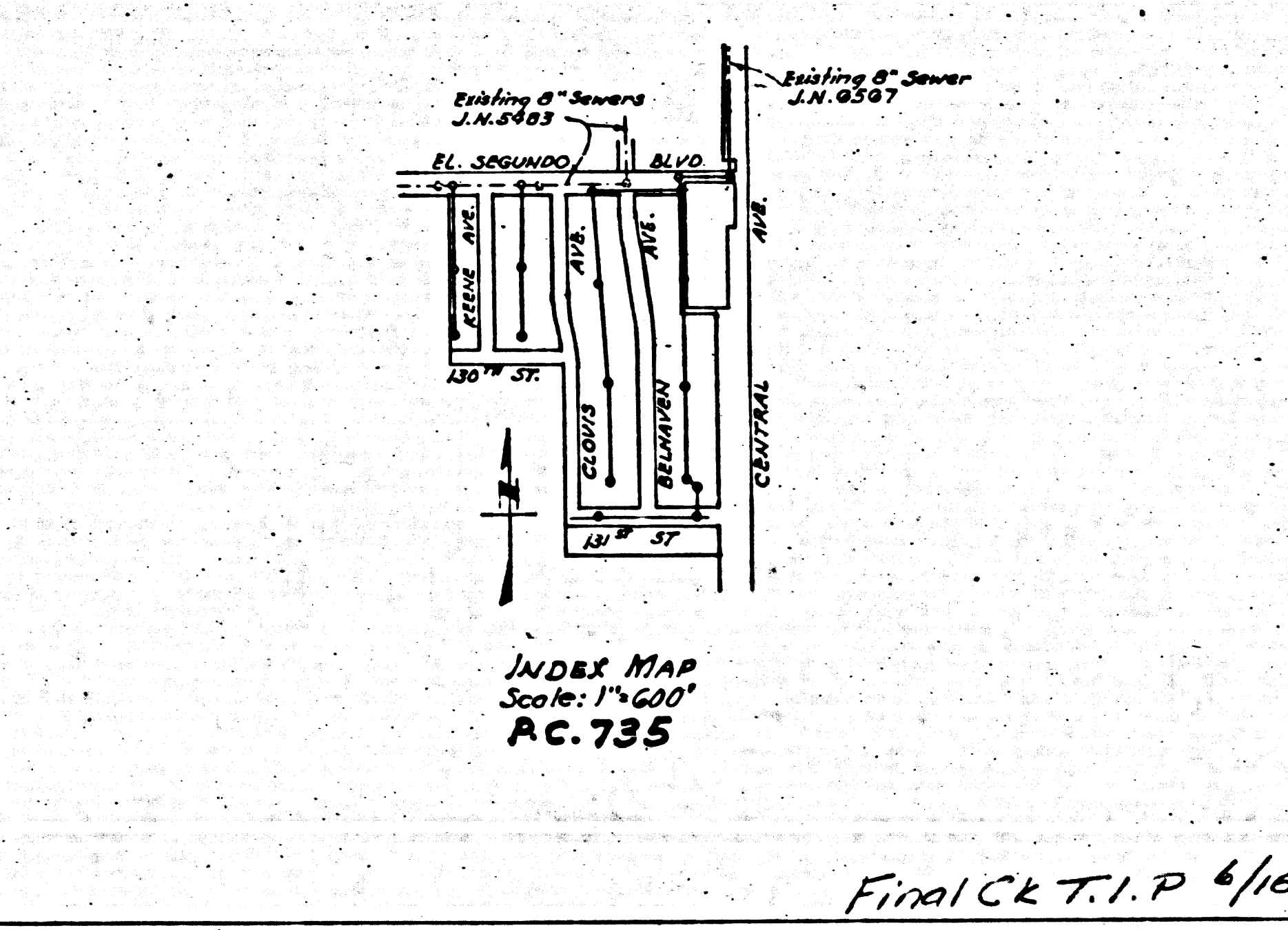
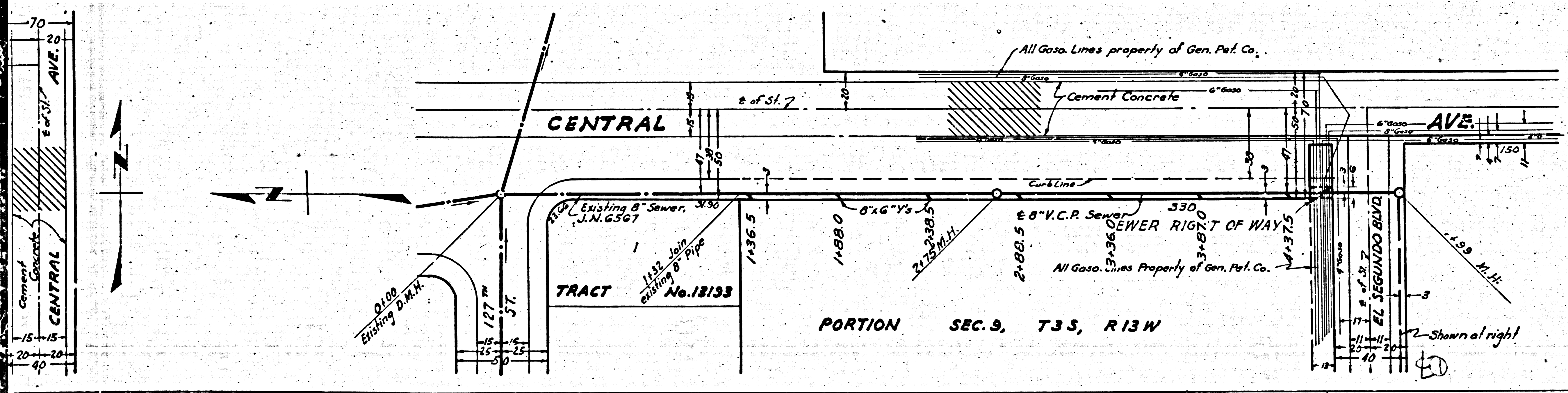
PRIVATE CONTRACT NO. 735
W.S. 26

SHEET 1 OF 1 SHEET

Scale: Vert. 1" = 4'
Hor. 1" = 40'

PREPARED IN THE OFFICES OF JONES & GILBERT
By Ralph Jones
Reg. E. No. 2311

FOR LEGEND
See Plan No. S-a-64



NOTE:
Grades for which this improvement is to be constructed are shown on Plans and Profiles. Grade points for top of curb, center line of streets or center line of alleys are shown by circles on Profiles. At all points between designated points the grade shall be established so as to conform to a straight line drawn between said designated points. Elevation are in feet above U. S. G. S. Datum or Mean Sea Level.

This drawing and the data hereon are hereby made a part of the specifications. Work shall be constructed according to specifications on file in the office of the County Engineer and shall be progressed only in the presence of the County Engineer. Before work can be started the Contractor must obtain a permit to excavate in County Streets from the L.A. County Road Dept., 211 South Main St. and make a deposit with the County Engineer, 100 Fashion League Building, sufficient to cover the cost of Construction Inspection and Record Plans.

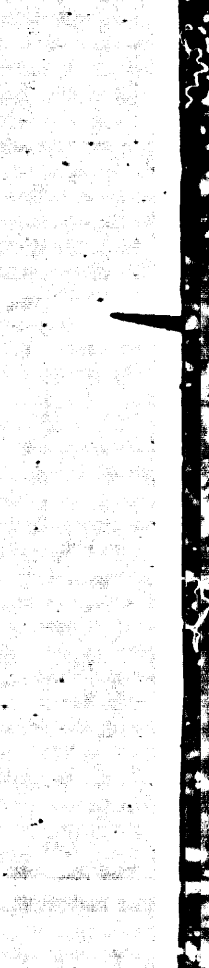
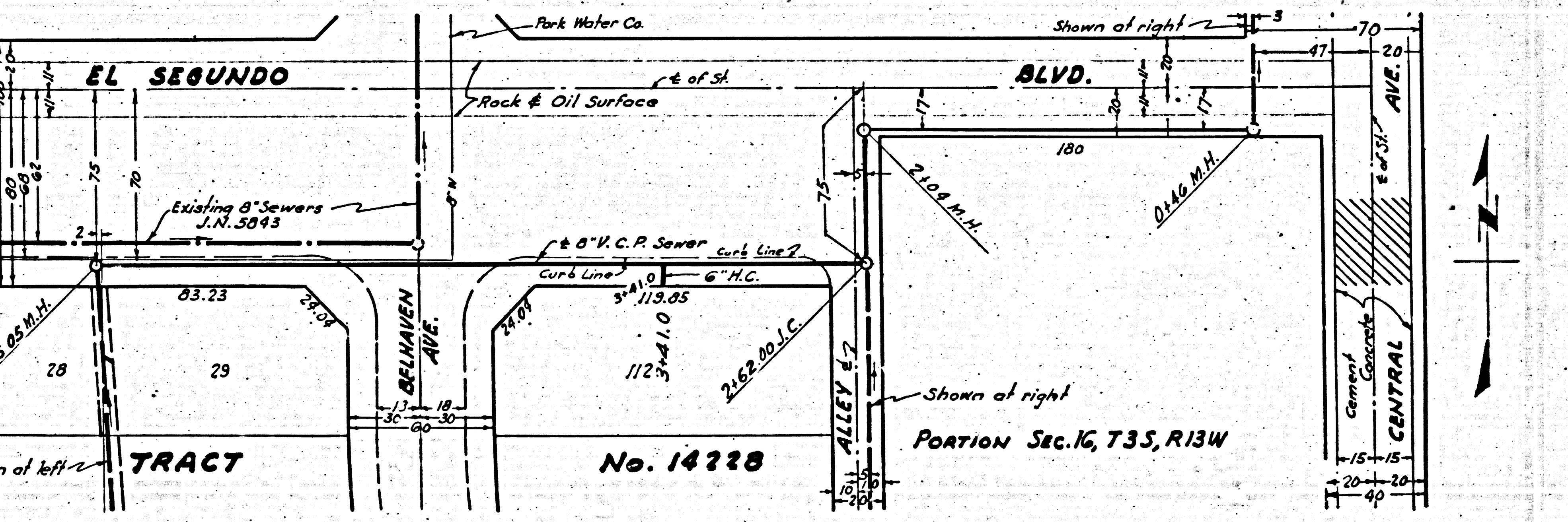
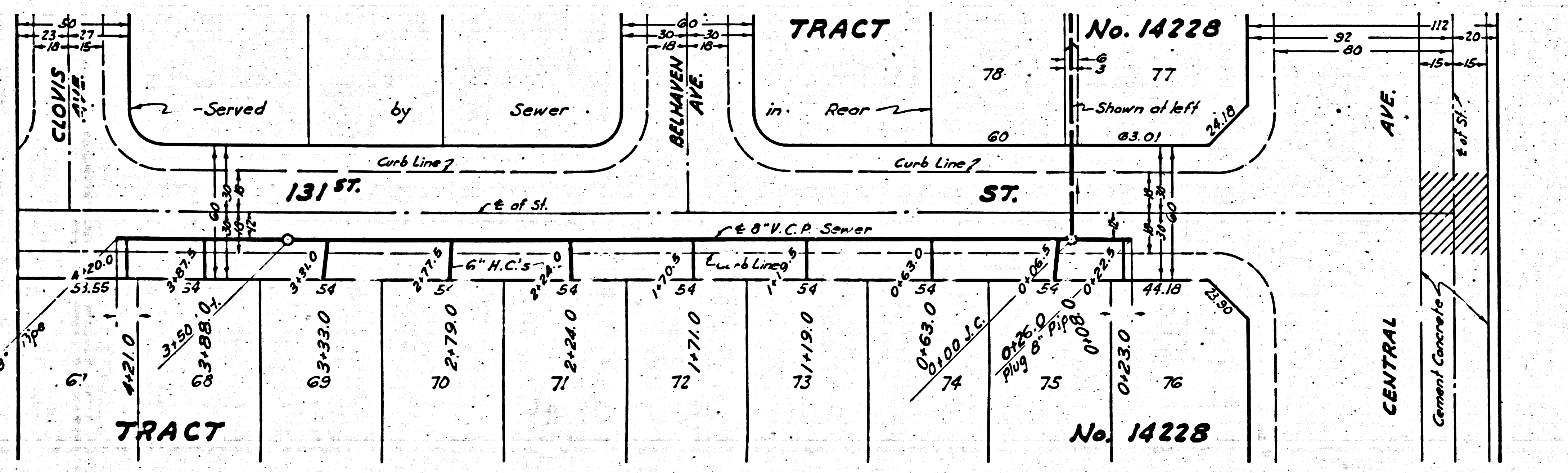
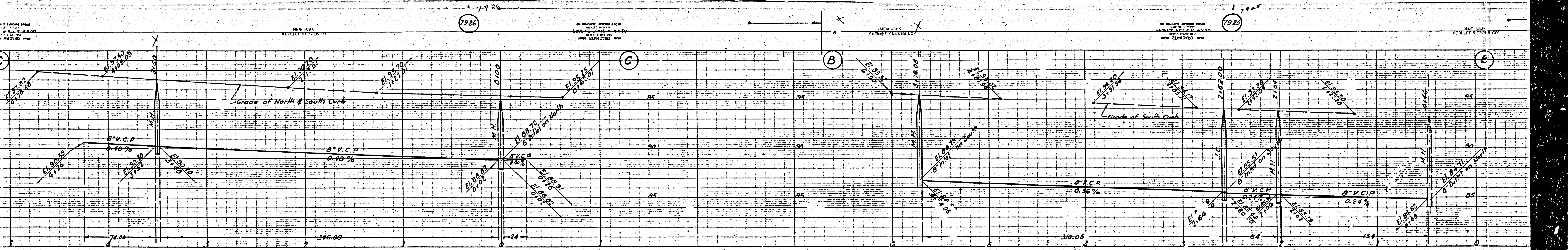
COUNTY OF LOS ANGELES, CALIFORNIA

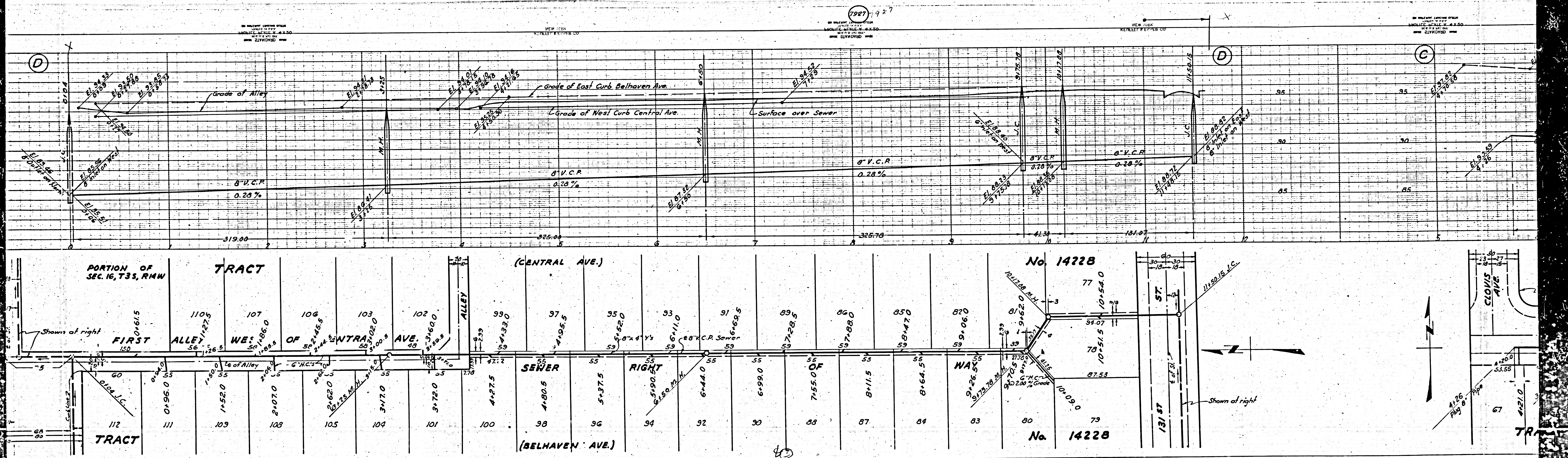
APPROVED: *[Signature]*
County Engineer

APPROVED: *[Signature]*
Chief Engineer of County Sanitation District No. 1

CHECKED: *[Signature]* Feb 17, 1948
Office of County Engineer Reg. C.E. No. 6441

Final C.T.I.P. 4/16/48

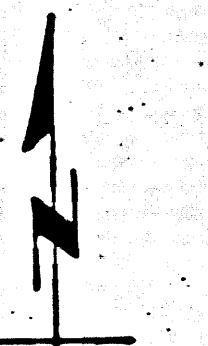




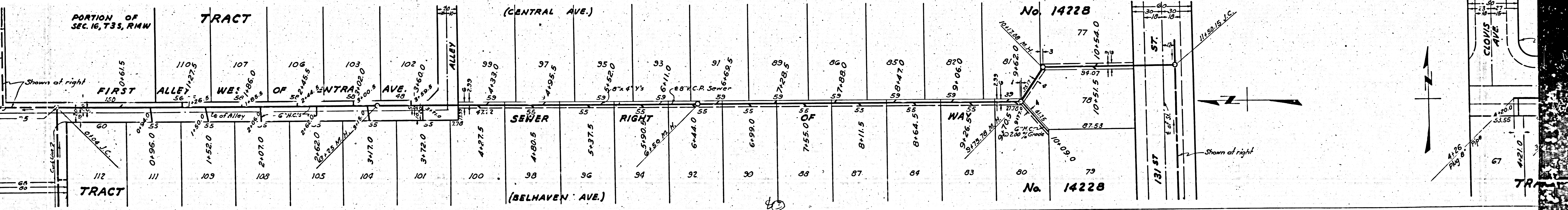
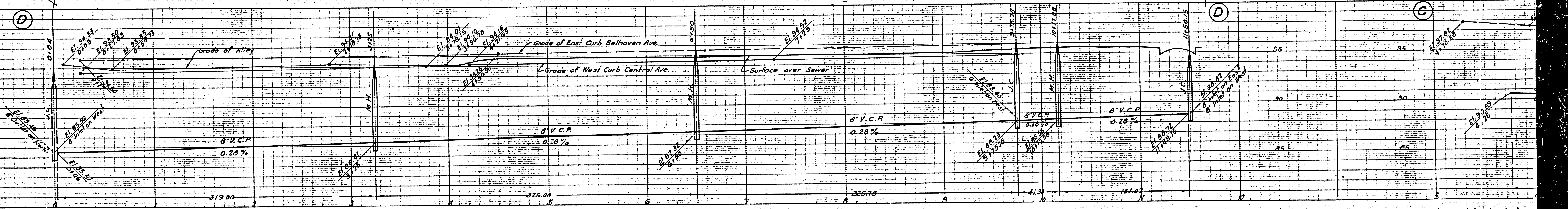
NEW YORK
 KENNETH W. PETERSON CO.
 ENGINEERS

NEW YORK
 KENNETH W. PETERSON CO.
 ENGINEERS

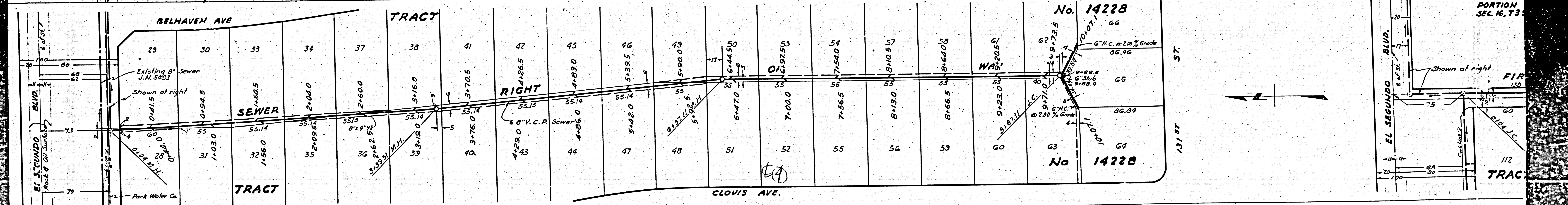
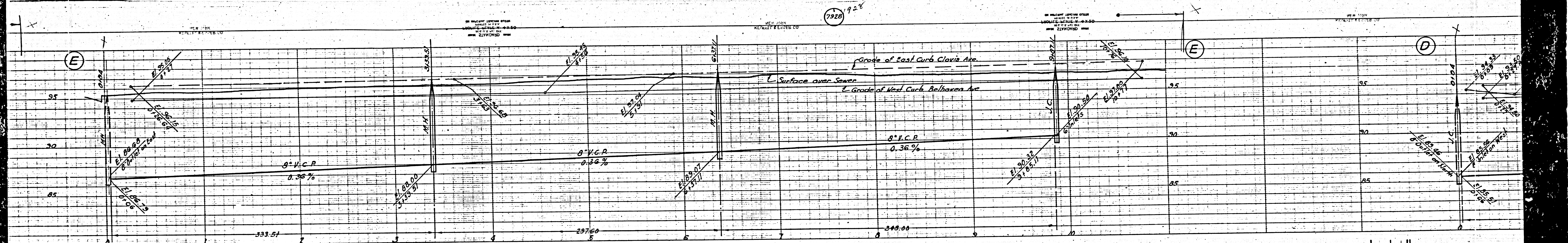
NEW YORK
 KENNETH W. PETERSON CO.
 ENGINEERS



1927 927

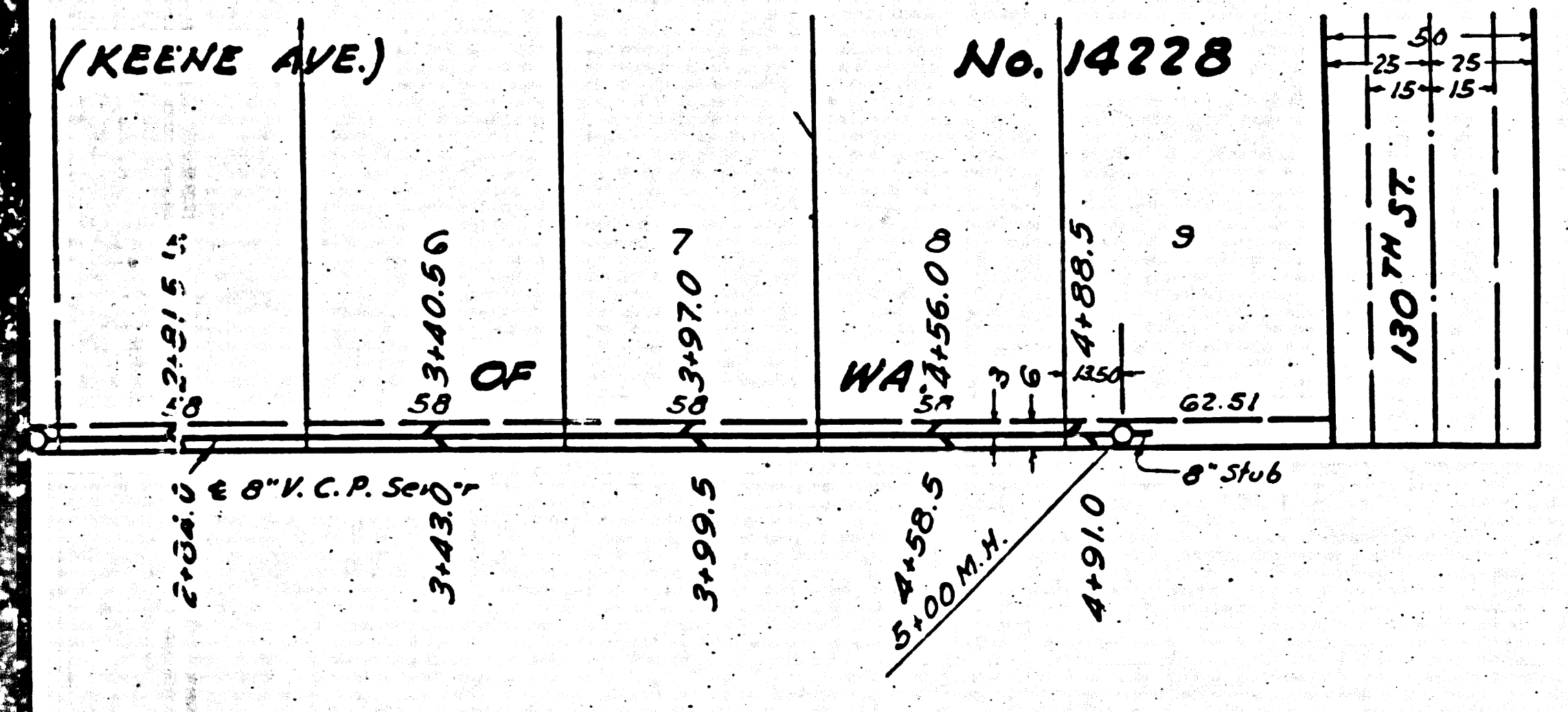
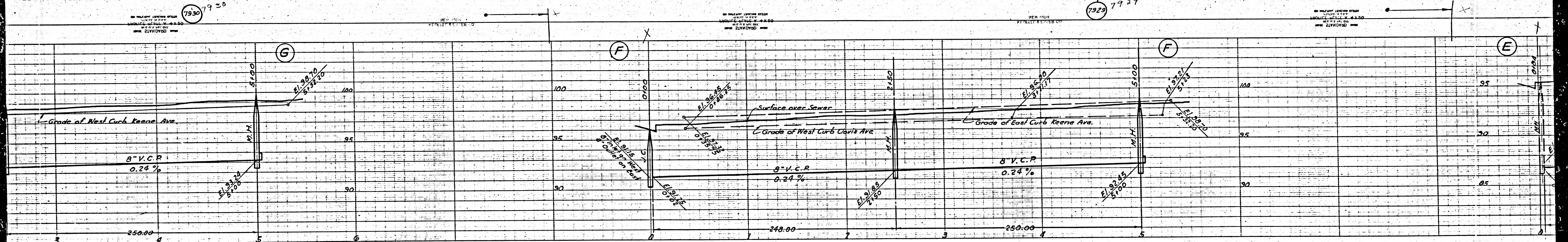


7928 1928

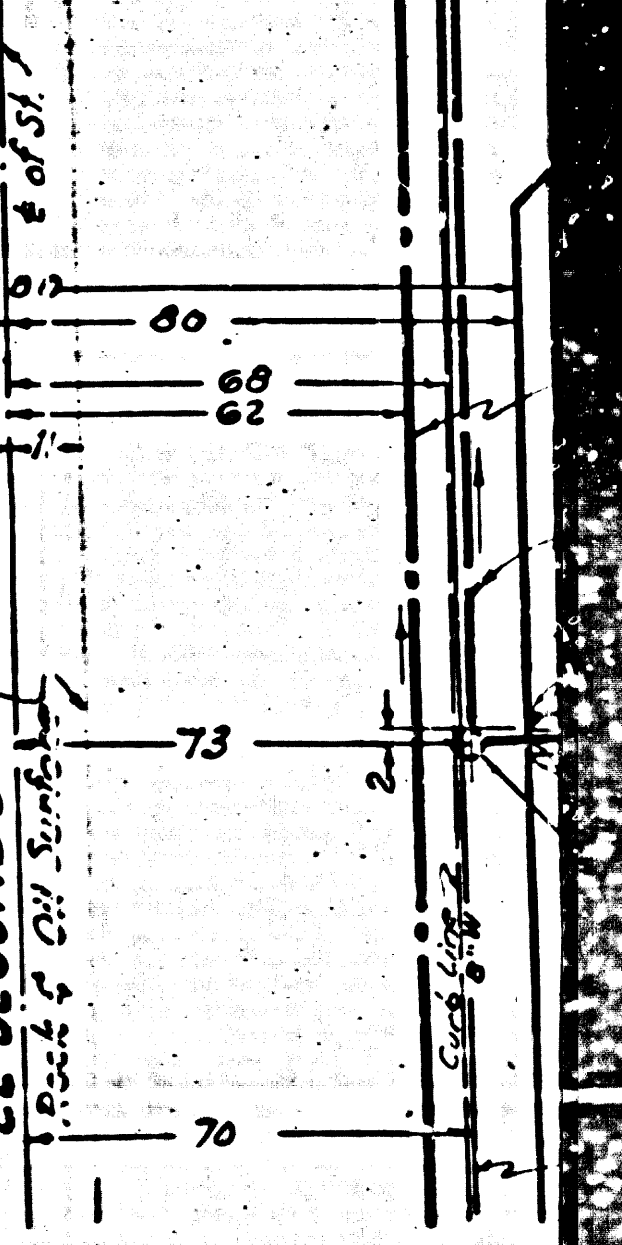
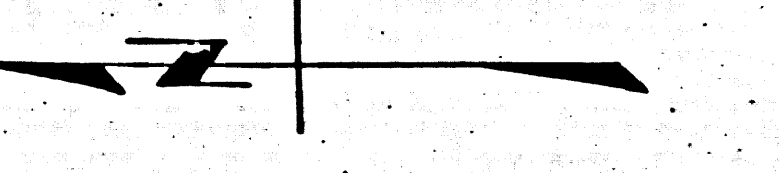
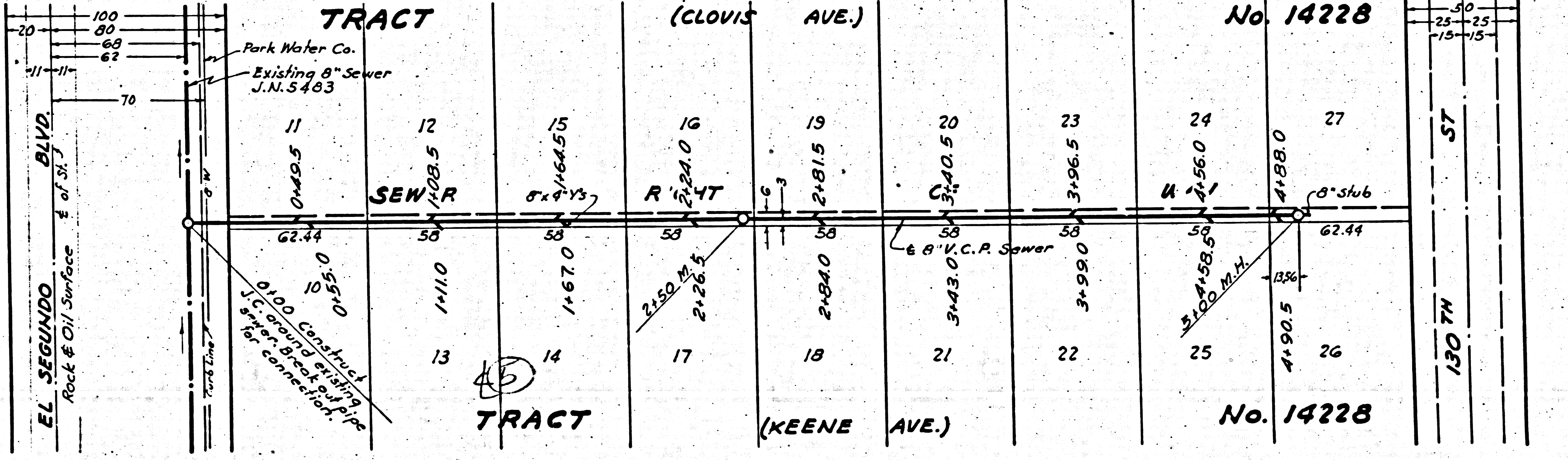
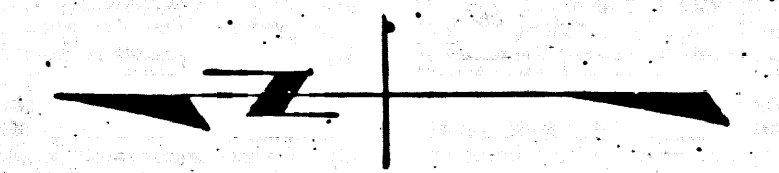


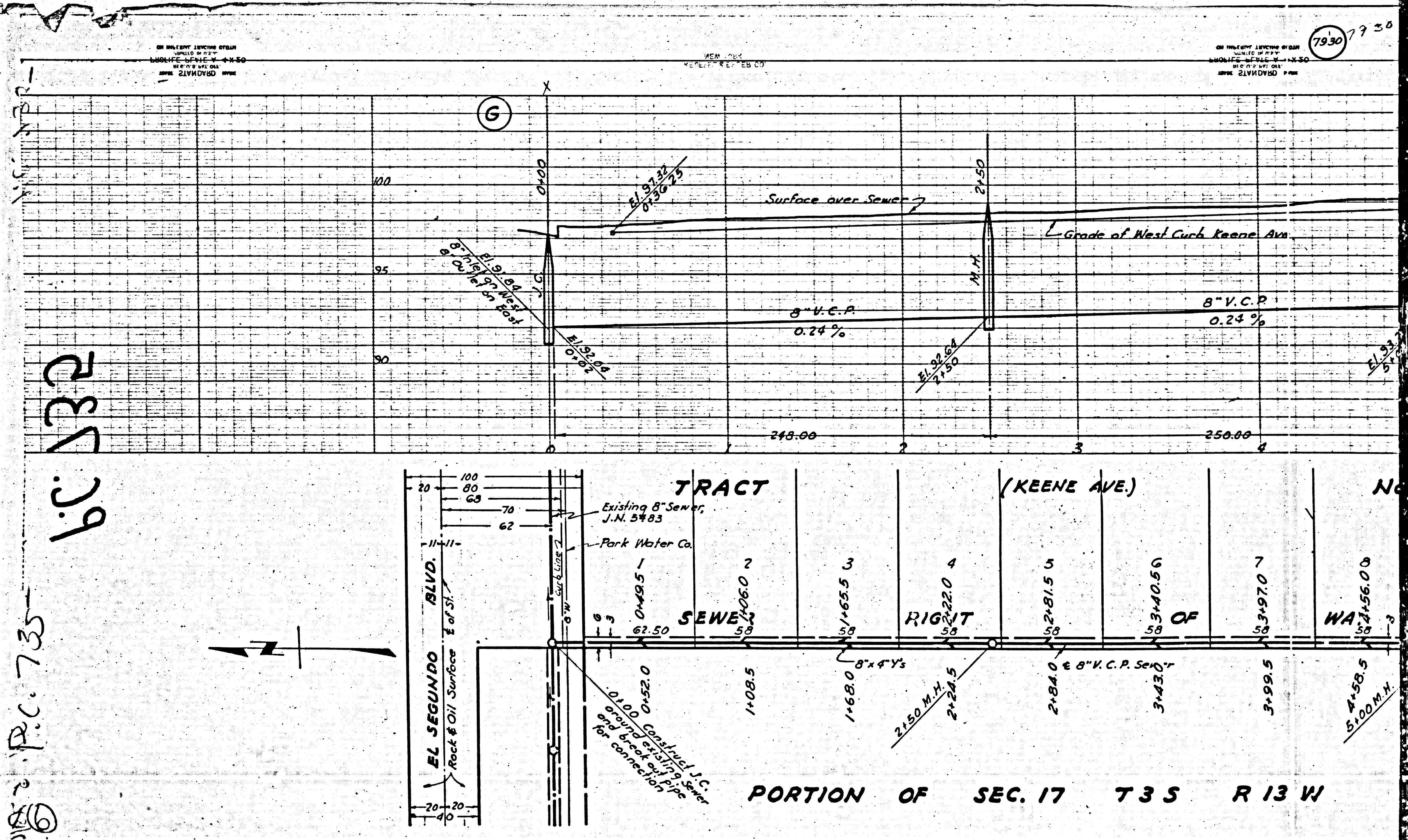
7930 7928

7929 7927



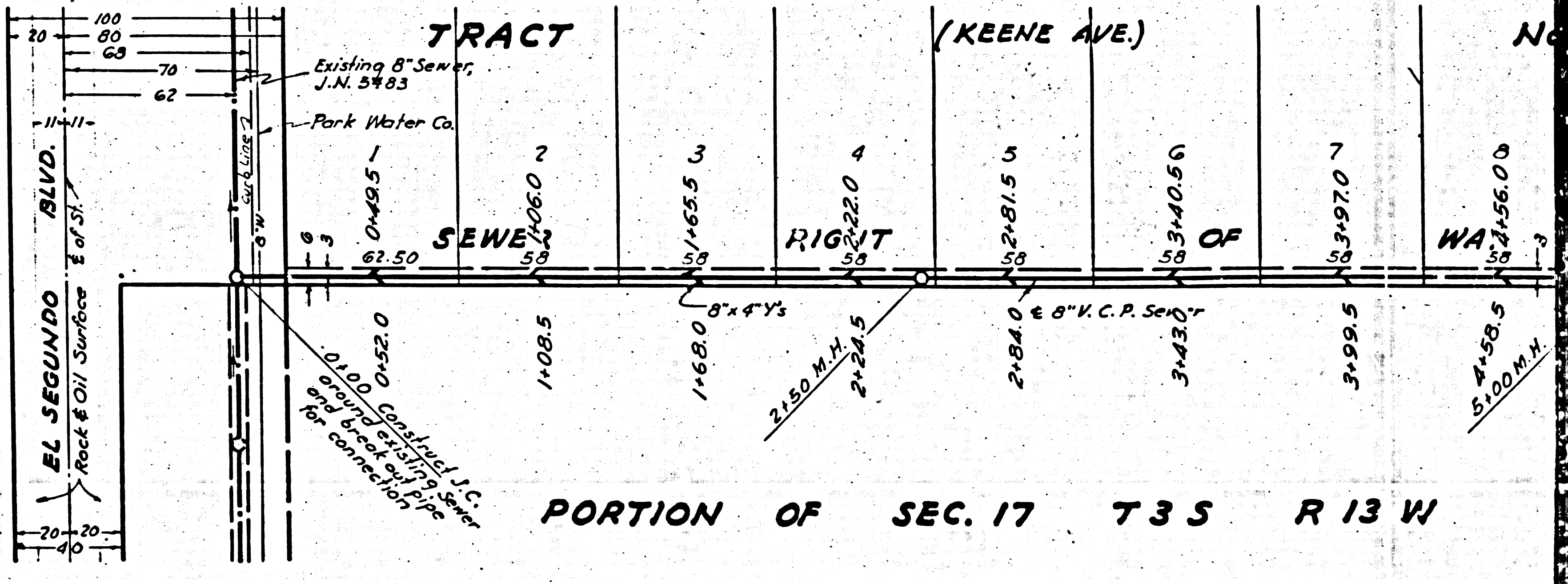
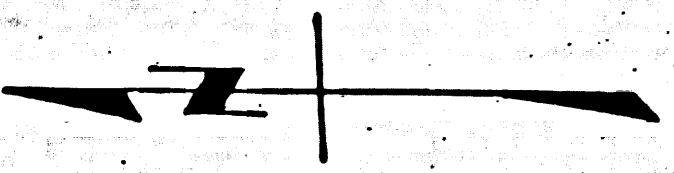
EC. 17 T3S R13W





b.c. 132

P.C. 735



PORTION OF SEC. 17 T3S R13W

1750