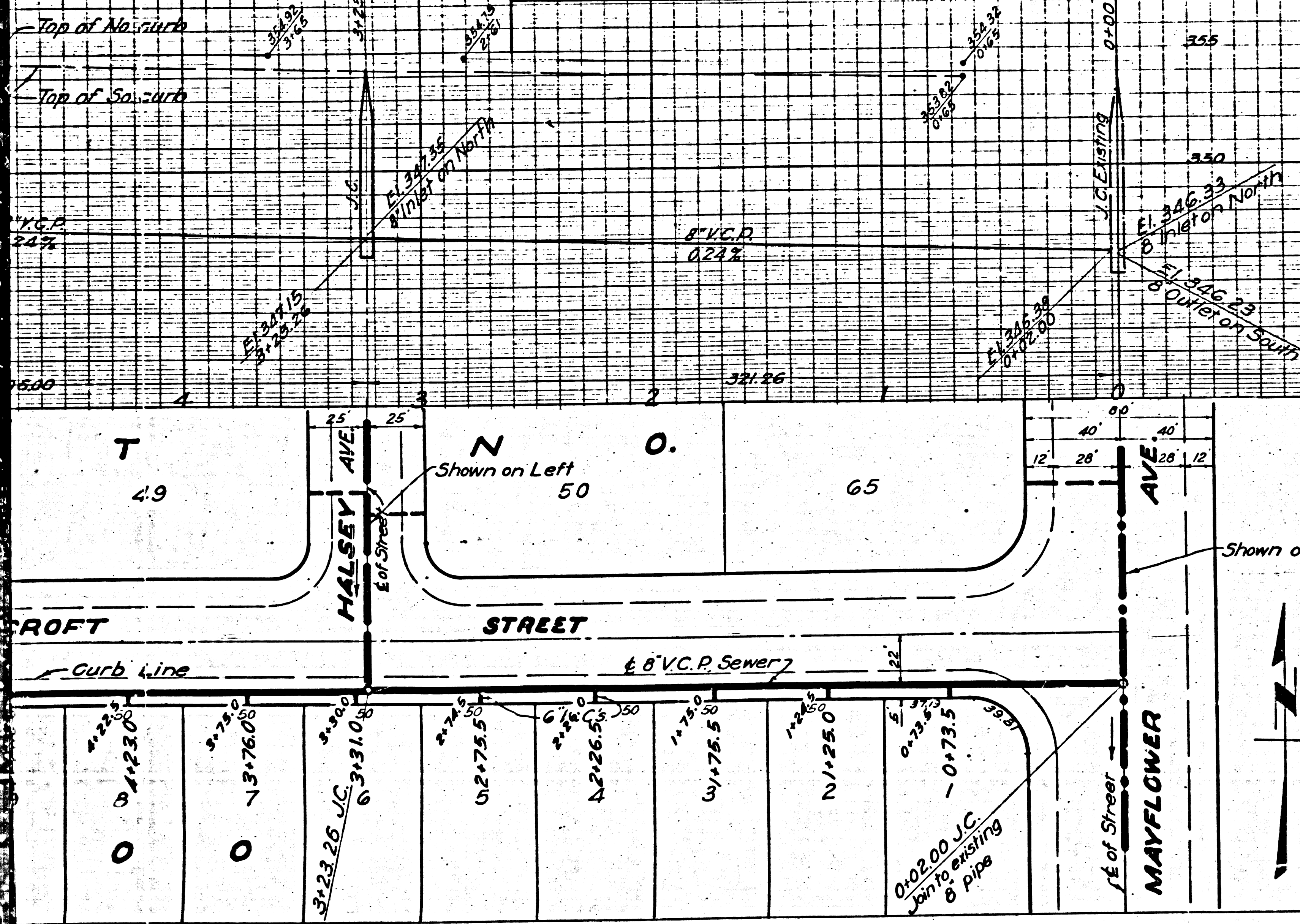


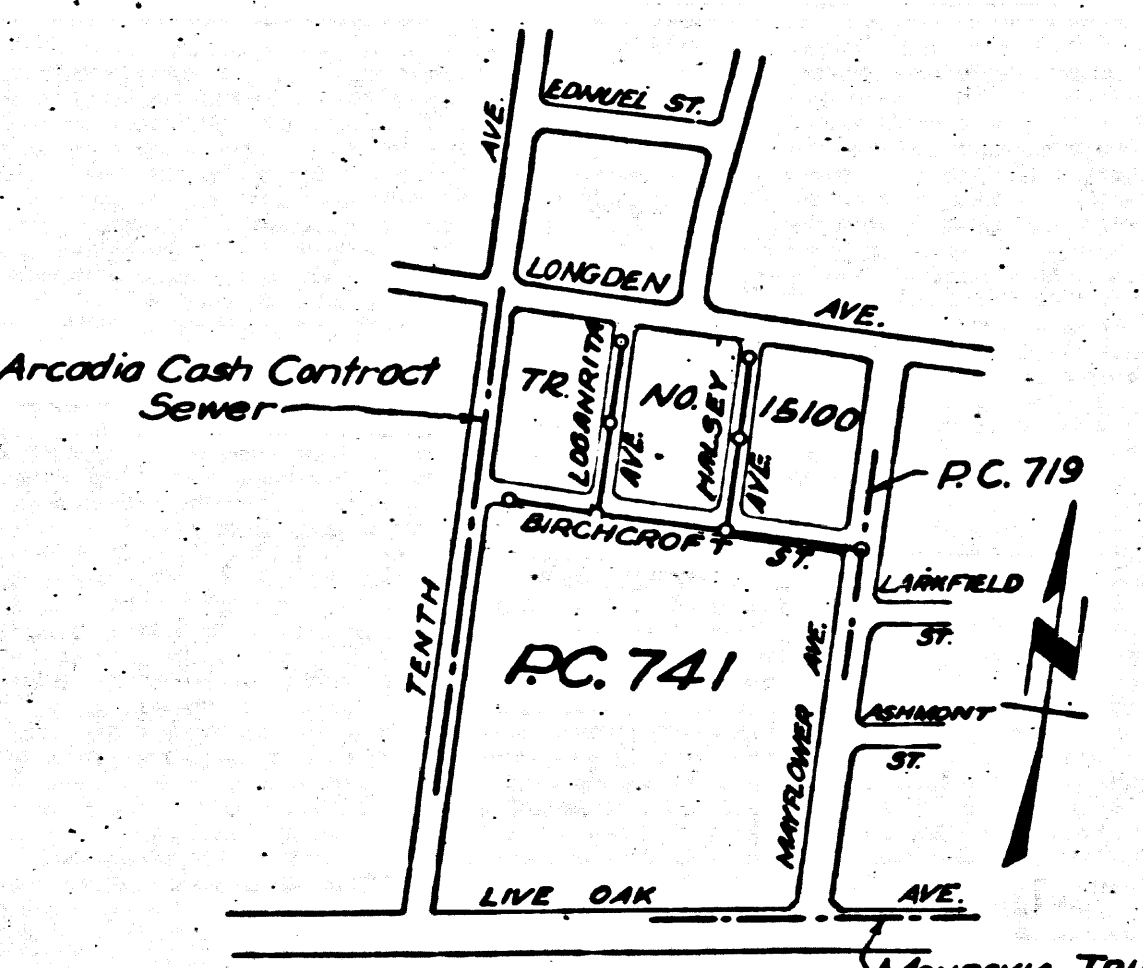
B.M. No 28 Elev. 302.395 Rd. Dept. FB-BA-84-67
 X Top of Fire Hydrant N. side of Longden Ave.
 1000 feet East of Mayflower Ave.



1. Use standard manhole frames and covers, S-r-117
2. Use standard strength pipe
3. Use cement mortar for all vitrified clay pipe joints
4. Construct house connections with invert at property line 5 feet below curb grade
5. All structures shall be brick sewer structures, S-r-104
6. Resurface all trench within paved area to meet L.A. Co. Rd. Dept. Requirements

Note: No representative of the County Engineer will survey or lay out any portion of the work. The owner or his authorized representative shall furnish the County Engineer with grade sheets and stations of all house connections and Y branches and shall provide stakes for them at their proper locations with stationing plainly marked. Any change of location shall be requested in writing by the owner or his representative. No revisions shall be made in these plans without the approval of the County Engineer.

PROFILE, ALIGNMENT AND GRADE FOR
SANITARY SEWERS
 TO BE CONSTRUCTED IN
BIRCHCROFT STREET
 FROM TENTH AVE TO MAYFLOWER AVE
LOGANRITA AVENUE
 FROM LONGDEN AVE TO BIRCHCROFT ST.
HALSEY AVENUE
 FROM LONGDEN AVE TO BIRCHCROFT ST.
TENTH AVENUE
 FROM LONGDEN AVE TO BIRCHCROFT ST.
PRIVATE CONTRACT NO. 741
WS 46
SHEET 1 OF 1 SHEETS
 PREPARED IN THE OFFICES OF
HAROLD A. BARNETT



SCALE: VERT. 1\"/>

FOR LEGEND
 SEE PLAN NO. S-a-64

NOTE:—
 Grades to which this improvement is to be constructed are shown on plan and profile. Grade points for top of curb, center line of street or center line of alley are shown by circles on profiles. At all points between designated points the grade shall be established so as to conform to a straight line drawn between said designated points. Elevations are in feet above U.S.S. datum or mean sea level. This drawing and the data herein are hereby made a part of the specifications. Work shall be constructed according to specifications on file in the office of the County Engineer and shall be prosecuted only in the presence of the County Engineer. Before work can be started the contractor must obtain a permit to excavate in county streets from the L.A. County Road Dept., 211 So. Main St., and make a deposit with the County Engineer, 700 Fashion League Building, sufficient to cover the cost of construction inspection and record plans. If work is to be done in a state highway a permit must be obtained from the State of California, Division of Highways, 808 State Building, after making the deposit with the County Engineer.

COUNTY OF LOS ANGELES-CALIFORNIA

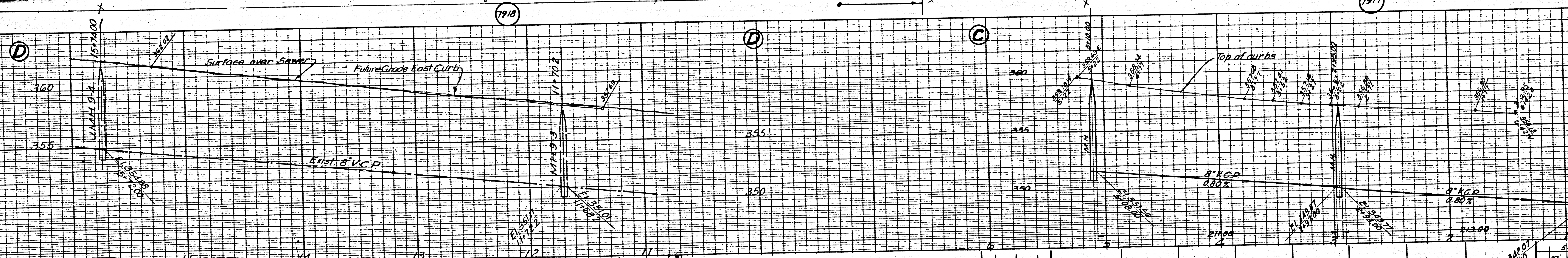
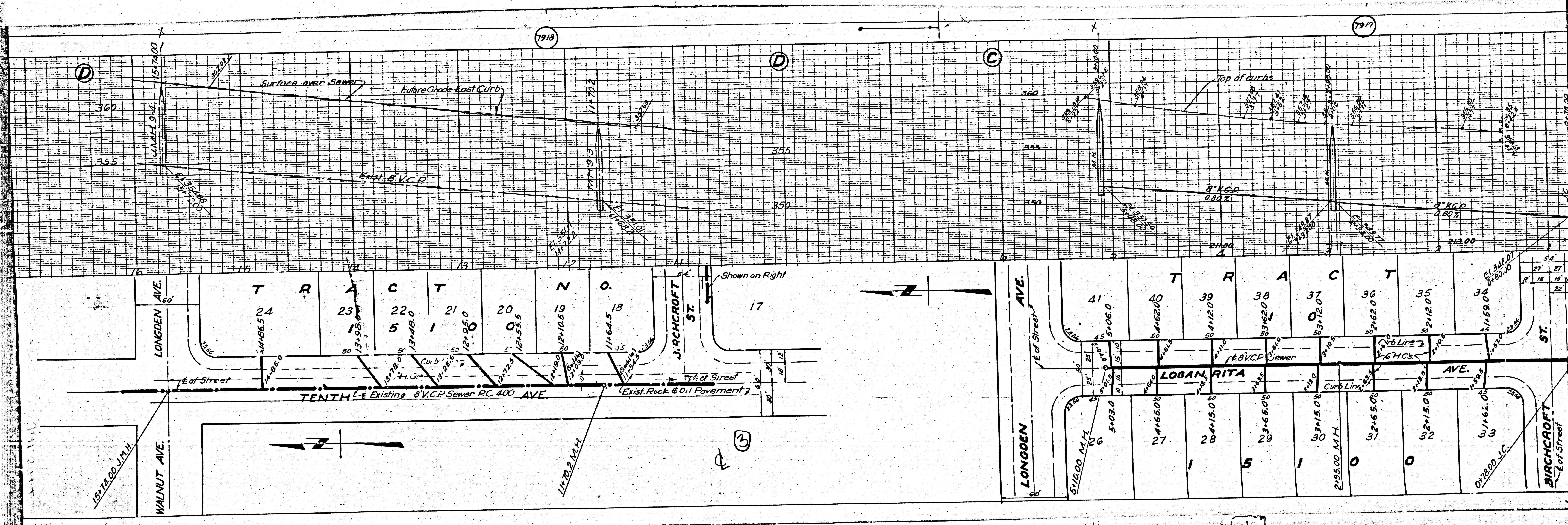
APPROVED *[Signature]*
 COUNTY ENGINEER

APPROVED *[Signature]*
 CHIEF ENGINEER OF COUNTY
 SANITATION DISTRICT NO. 18

CHECKED BY *[Signature]* Mac 30 1948
 Office of County Engineer, P.E. No. 6322

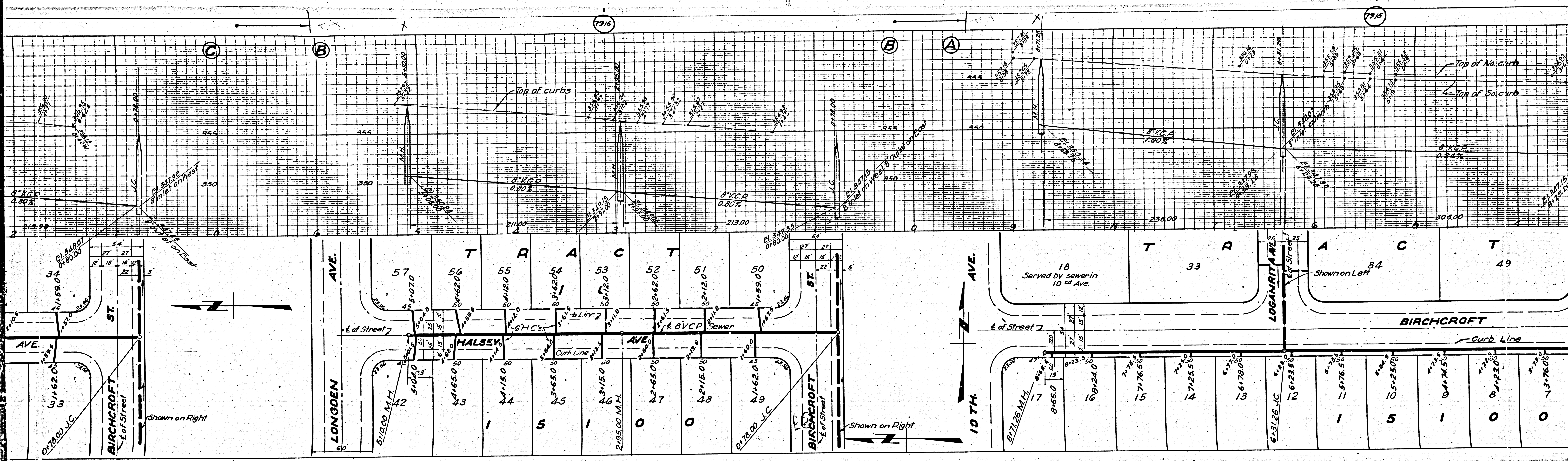
Final Ck. T.R.P. 5/17/48

SC 741



Lot No.	Area (sq. ft.)	Area (sq. ft.)	Area (sq. ft.)	Area (sq. ft.)	Area (sq. ft.)	Area (sq. ft.)	Area (sq. ft.)	Area (sq. ft.)	Area (sq. ft.)	Area (sq. ft.)
17	11,645.18	11,645.18	11,645.18	11,645.18	11,645.18	11,645.18	11,645.18	11,645.18	11,645.18	11,645.18
18	11,645.18	11,645.18	11,645.18	11,645.18	11,645.18	11,645.18	11,645.18	11,645.18	11,645.18	11,645.18
19	11,645.18	11,645.18	11,645.18	11,645.18	11,645.18	11,645.18	11,645.18	11,645.18	11,645.18	11,645.18
20	11,645.18	11,645.18	11,645.18	11,645.18	11,645.18	11,645.18	11,645.18	11,645.18	11,645.18	11,645.18
21	11,645.18	11,645.18	11,645.18	11,645.18	11,645.18	11,645.18	11,645.18	11,645.18	11,645.18	11,645.18
22	11,645.18	11,645.18	11,645.18	11,645.18	11,645.18	11,645.18	11,645.18	11,645.18	11,645.18	11,645.18
23	11,645.18	11,645.18	11,645.18	11,645.18	11,645.18	11,645.18	11,645.18	11,645.18	11,645.18	11,645.18
24	11,645.18	11,645.18	11,645.18	11,645.18	11,645.18	11,645.18	11,645.18	11,645.18	11,645.18	11,645.18
25	11,645.18	11,645.18	11,645.18	11,645.18	11,645.18	11,645.18	11,645.18	11,645.18	11,645.18	11,645.18
26	11,645.18	11,645.18	11,645.18	11,645.18	11,645.18	11,645.18	11,645.18	11,645.18	11,645.18	11,645.18
27	11,645.18	11,645.18	11,645.18	11,645.18	11,645.18	11,645.18	11,645.18	11,645.18	11,645.18	11,645.18
28	11,645.18	11,645.18	11,645.18	11,645.18	11,645.18	11,645.18	11,645.18	11,645.18	11,645.18	11,645.18
29	11,645.18	11,645.18	11,645.18	11,645.18	11,645.18	11,645.18	11,645.18	11,645.18	11,645.18	11,645.18
30	11,645.18	11,645.18	11,645.18	11,645.18	11,645.18	11,645.18	11,645.18	11,645.18	11,645.18	11,645.18
31	11,645.18	11,645.18	11,645.18	11,645.18	11,645.18	11,645.18	11,645.18	11,645.18	11,645.18	11,645.18
32	11,645.18	11,645.18	11,645.18	11,645.18	11,645.18	11,645.18	11,645.18	11,645.18	11,645.18	11,645.18
33	11,645.18	11,645.18	11,645.18	11,645.18	11,645.18	11,645.18	11,645.18	11,645.18	11,645.18	11,645.18
34	11,645.18	11,645.18	11,645.18	11,645.18	11,645.18	11,645.18	11,645.18	11,645.18	11,645.18	11,645.18
35	11,645.18	11,645.18	11,645.18	11,645.18	11,645.18	11,645.18	11,645.18	11,645.18	11,645.18	11,645.18

WALNUT AVE. 157,740.00 I.M.H.
 LONGDEN AVE.
 BIRCHCROFT ST.
 LOGAN RITA AVE.
 TENTH AVE. Existing 8" V.C.P. Sewer P.C. 400 AVE.
 BIRCHCROFT ST.



M3

M6