

B.M. Elev. 315.14, L & T N.W. Cor.
Lower Azusa Rd. & Sunset Blvd.
Ref. L.A. Co. Rd. Dept. L.Q. 400-Z

- 1 Use standard manhole frames and covers, S-a-117
- 2 Use standard strength pipe.
- 3 Use cement mortar for all vitrified clay pipe joints.
- 4 All structures shall be brick sewer structures, S-a-104

Note:—
No representative of the County Engineer will survey or lay out any portion of the work.
The owner or his authorized representative shall furnish the County Engineer with grade sheets and stations of all house connections and Y branches and shall provide stakes for them at their proper locations with stationing plainly marked. Any change of location shall be requested in writing by the owner or his representative.
No revisions shall be made in these plans without the approval of the County Engineer.

PROFILE, ALIGNMENT AND GRADE FOR
SANITARY SEWERS
TO BE CONSTRUCTED IN
ELLIS LANE
LOT 6 OF F.B. GIBSON'S TRACT

PRIVATE CONTRACT NO. 742
W.S. 44
SHEET 1 OF 1 SHEETS
PREPARED IN THE OFFICES OF
HAROLD A. BARNETT

by *Harold A. Barnett*
REG. CE. NO. 1216

SCALE: VERT. 1"=4'
HORIZ. 1"=60'

FOR LEGEND
SEE PLAN NO. S-a-64

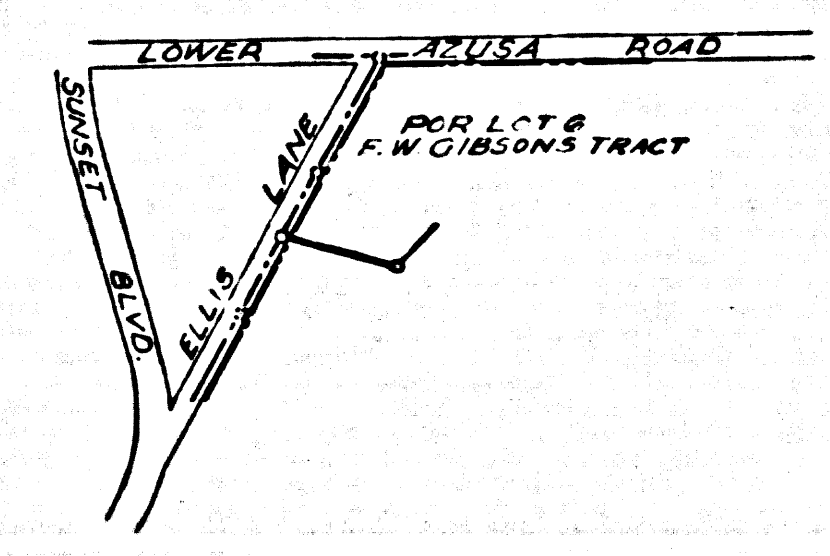
Note:—
Grades to which this improvement is to be constructed are shown on plans and profiles. Grade points for top of curb, center line of street or center line of alley are shown by circles on profiles. At all points between designated points the grade shall be established so as to conform to a straight line drawn between said designated points.
Elevations are in feet above U.S.C.S. datum or mean sea level.
This drawing and the data hereon are hereby made a part of the specifications.
Work shall be constructed according to specifications on file in the office of the County Engineer and shall be prosecuted only in the presence of the County Engineer.
Before work can be started the contractor must obtain a permit to excavate in public streets from the L.A. County Road Dept., 211-32 Main St., and make a deposit with the County Engineer, 700 Fashion League Building, sufficient to cover the cost of construction inspection and record plans.
If work is to be done in a State Highway a permit must be obtained from the State of California, Division of Highways, 800 State Building after making the deposit with the County Engineer.

COUNTY OF LOS ANGELES-CALIFORNIA

APPROVED *[Signature]*
COUNTY ENGINEER OF EL MONTE

APPROVED *[Signature]*
CHIEF ENGINEER OF COUNTY SANITATION DISTRICT NO. 1

CHECKED BY *[Signature]*
REG. NO. 3513



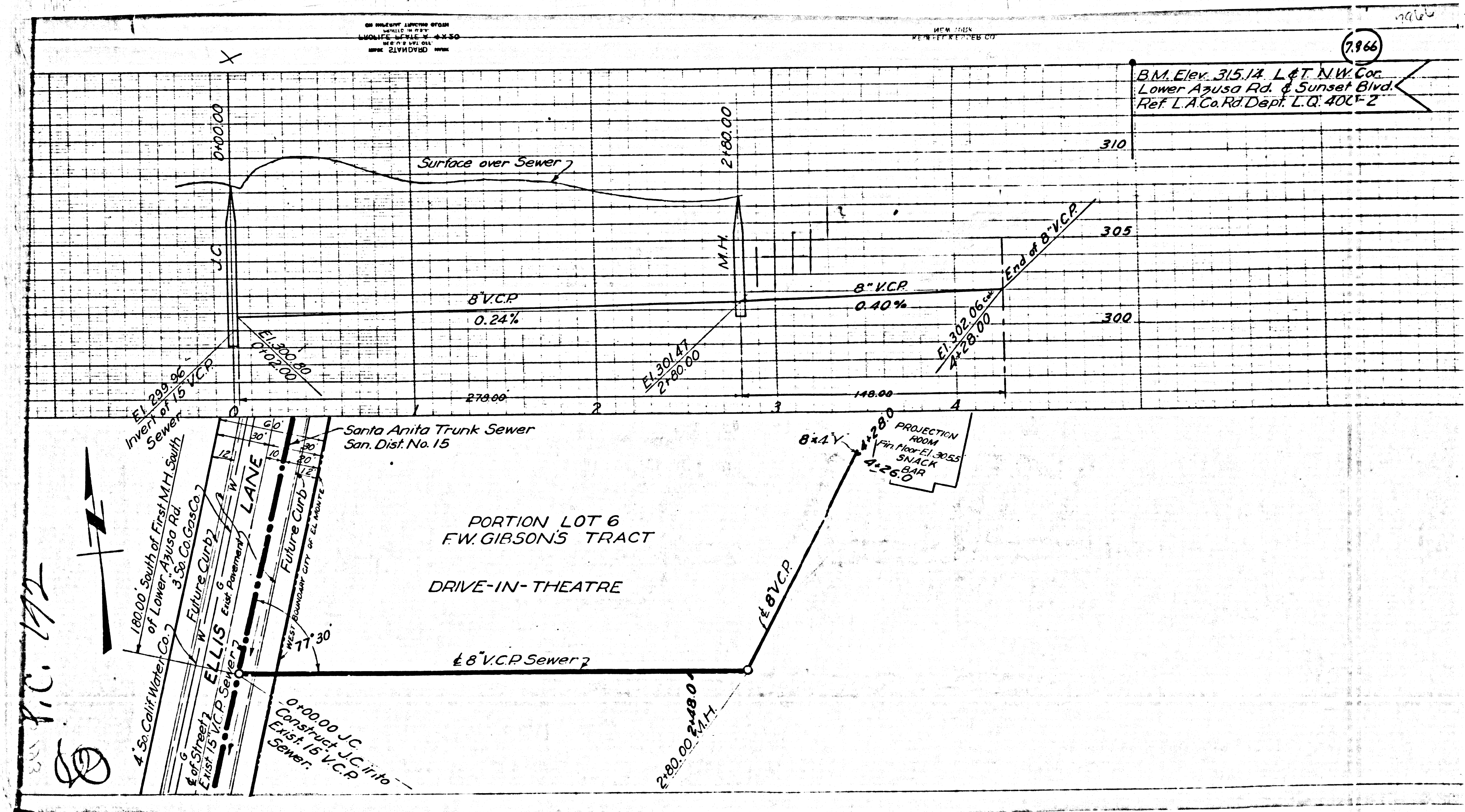
INDEX MAP
Scale 1"=600'

Final Ck. T.P. 4/21/48

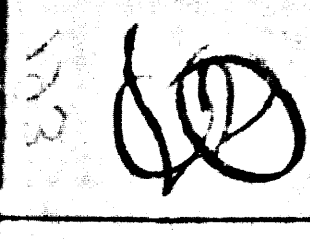
DUAS

7866

B.M. Elev. 315.14 L & T NW Cor.
Lower Avuso Rd. & Sunset Blvd.
Ref. L.A. Co. Rd Dept. L.Q. 4005-Z



P.C. 172



M3

M5