

7889
 B.M.P. 44 Bolt Spike W. Edge Conc. Ditch
 on E. Alamo St. - Elev. 176.501
 L.S. 534.2
 B.M.P. 44 Bolt Spike in Curb 10' W. of W.
 and Curb Robert, S.W. Cor. Pasadena St.
 and Alamo St. - Elev. 176.524
 Page 144, F.D. 1224

1. USE STANDARD MANHOLE FRAMES AND COVERS PER PLAN S-G-117.
2. USE STANDARD STRENGTH PIPE EXCEPT AS NOTED.
3. USE CEMENT MORTAR FOR ALL VITRIFIED CLAY PIPE JOINTS.
4. RESURFACE ALL TRENCH WITHIN PAVED AREA TO MEET LOS ANGELES COUNTY ROAD DEPT. REQUIREMENTS.
5. CONSTRUCT HOUSE CONNECTIONS WITH INVERT AT PROPERTY LINE FIVE FEET BELOW GRADE OF CENTER LINE OF EASEMENT EXCEPT AS NOTED.
6. ENCASE FOUR FEET OF SEWER AT POINTS OF INTERFERENCE WITH POLES AS PER S-G-113.
7. ALL STRUCTURES SHALL BE BRICK SEWER STRUCTURES, S.G. 10A.
8. ALL MANHOLES TO EXTEND 6\"/>

NOTE:
 NO REPRESENTATIVE OF THE COUNTY ENGINEER WILL SURVEY OR LAY OUT ANY PORTION OF THE WORK.
 THE OWNER OR HIS AUTHORIZED REPRESENTATIVE SHALL FURNISH THE COUNTY ENGINEER WITH GRADE SHEETS AND STATIONS OF ALL HOUSE CONNECTIONS AND Y BRANCHES, AND SHALL PROVIDE STAKES FOR THEM AT THEIR PROPER LOCATIONS WITH STATIONING PLAINLY MARKED.
 ANY CHANGE OF LOCATION SHALL BE REQUESTED IN WRITING BY THE OWNER OR HIS REPRESENTATIVE.
 NO REVISIONS SHALL BE MADE IN THESE PLANS WITHOUT APPROVAL OF THE COUNTY ENGINEER.

PROFILE, ALIGNMENT AND GRADE OF
SANITARY SEWERS
 TO BE CONSTRUCTED IN
 SANITARY SEWER RIGHTS OF WAY
 IN TRACT N^o 15219

PRIVATE CONTRACT N^o 755
 W.S. 136
 SHEET 1 OF 1 SHEETS
 PREPARED IN THE OFFICE OF LEONARD H. GOWDY

BY: *Leonard H. Gowdy*
 REGISTERED CIVIL ENGINEER No. 4825
 SCALE: Ver. 1" = 4'
 Hor. 1" = 40'
 FEBRUARY 1948

FOR LEGEND, SEE PLAN N^o S-G-64
 NOTE:
 GRADES TO WHICH THIS IMPROVEMENT IS TO BE CONSTRUCTED ARE SHOWN ON PLANS AND PROFILES. GRADE POINTS FOR TOP OF CURB, CENTER LINE OF STREET OR CENTER LINE OF ALLEY ARE SHOWN BY CIRCLES ON PROFILES. AT ALL POINTS BETWEEN DESIGNATED POINTS THE GRADE SHALL BE ESTABLISHED SO AS TO CONFORM TO A STRAIGHT LINE DRAWN BETWEEN SAID DESIGNATED POINTS.
 ELEVATIONS ARE IN FEET ABOVE U.S. G.S. DATUM OR MEAN SEA LEVEL.
 THIS DRAWING AND THE DATA HEREON ARE HEREBY MADE A PART OF THE SPECIFICATIONS. WORK SHALL BE CONSTRUCTED ACCORDING TO SPECIFICATIONS ON FILE IN THE OFFICE OF THE COUNTY ENGINEER, AND SHALL BE PROSECUTED ONLY IN THE PRESENCE OF THE COUNTY ENGINEER. BEFORE WORK CAN BE STARTED, THE CONTRACTOR MUST OBTAIN A PERMIT TO EXCAVATE IN COUNTY STREETS FROM THE L.A. COUNTY ROAD DEPT., 211 SOUTH MAIN, AND MAKE A DEPOSIT, WITH THE COUNTY ENGINEER, 700 FASHION LEAGUE BUILDING, SUFFICIENT TO COVER THE COST OF CONSTRUCTION INSPECTION AND RECORD PLANS.

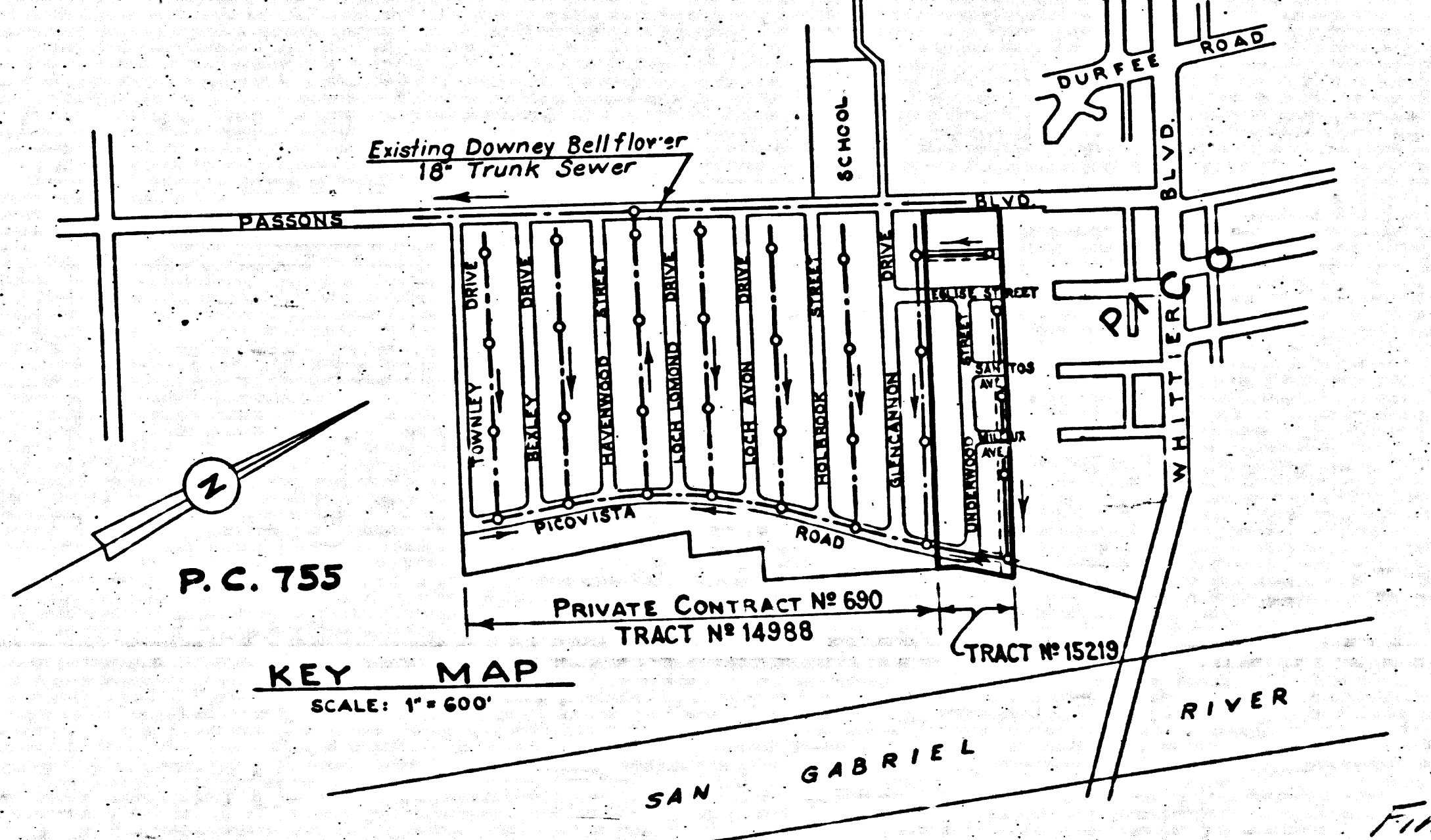
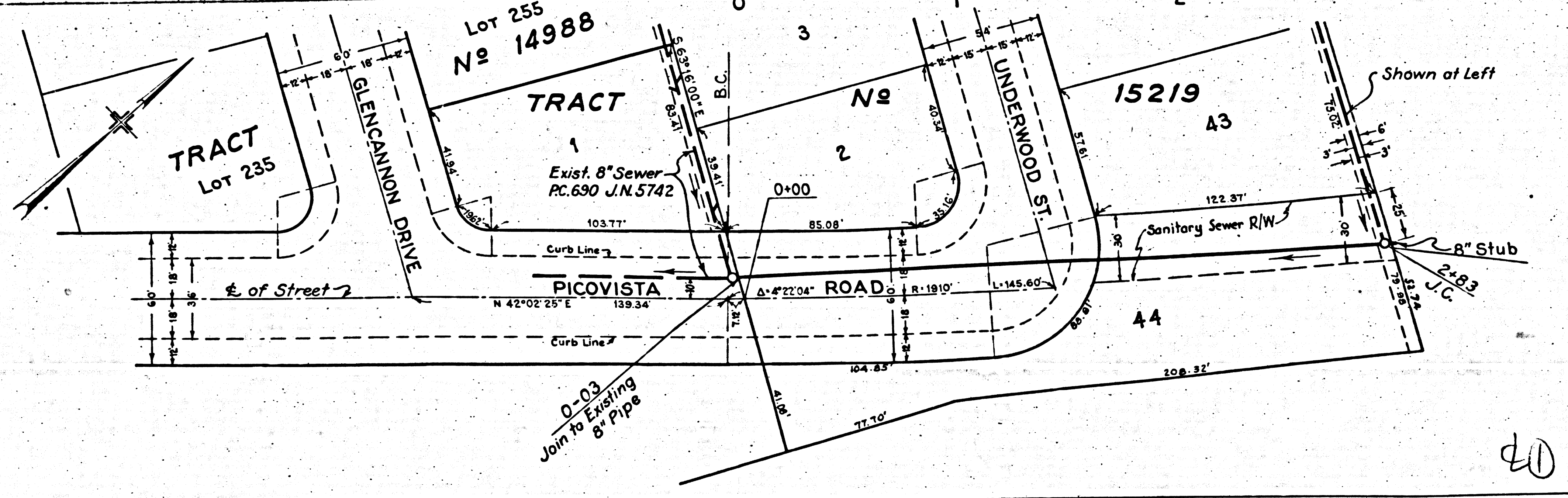
COUNTY OF LOS ANGELES, CALIFORNIA

APPROVED: *E. Schmid*
 COUNTY ENGINEER

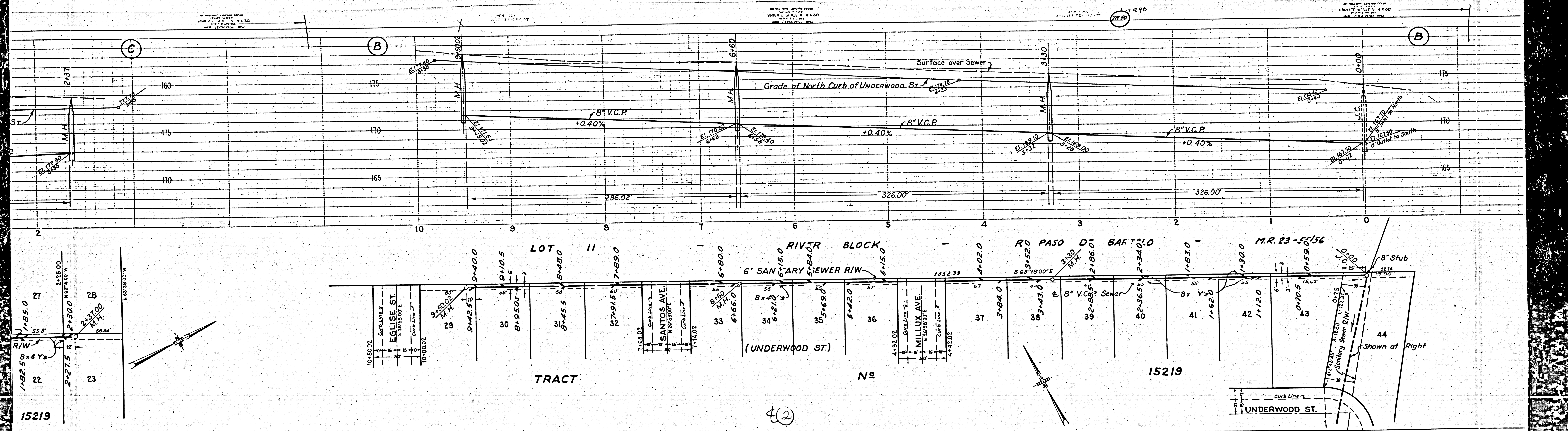
APPROVED: *Paul Law*
 CHIEF ENGINEER OF COUNTY
 SANITATION DISTRICT NO. 2

CHECKED BY: *L. D. Mene*
 OFFICE OF COUNTY ENGINEER, Bldg. 1200, 211 S. MAIN

Final C.E. T.P. 4/20/48



40



15219
 27
 28
 22
 23
 15219
 4(2)
 15219
 44
 Shown at Right
 UNDERWOOD ST.

