

B.M. Elev 315.14 V.C.P. in Curb  
NW Cor. Lower Azusa Rd  
and Sunset Blvd

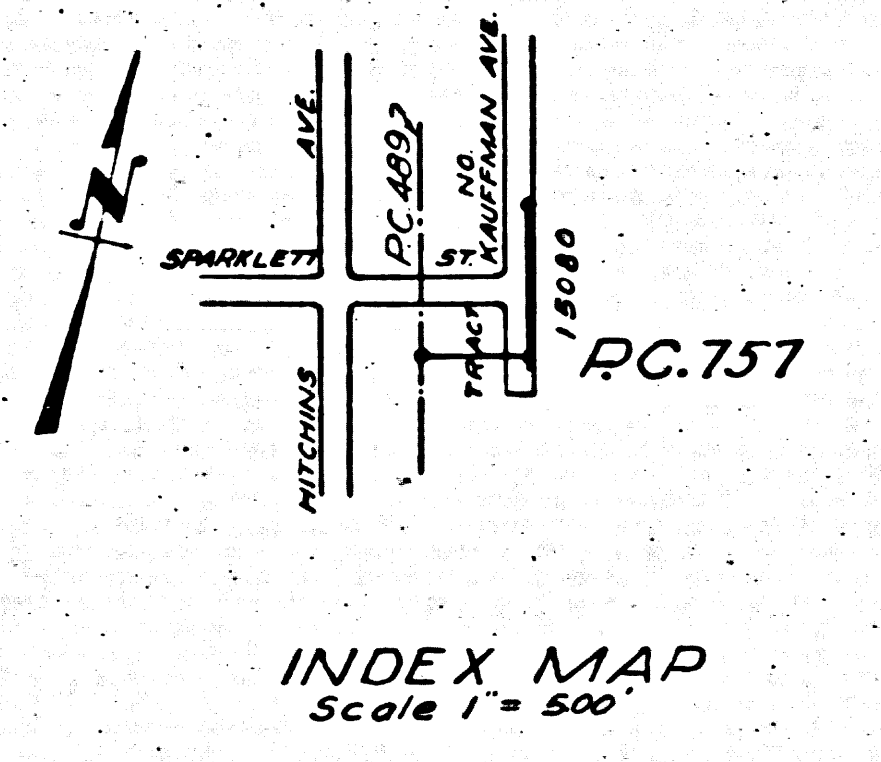
- 1 Use Standard Manhole frames and covers, 5'-11"
- 2 Use Standard Strength pipe
- 3 Use cement mortar for all vitrified clay pipe joints
- 4 All structures shall be brick sewer structures, 5'-10"
- 5 Construct tops of all structures in Right of Way 6" above finished grade

PROFILE ALIGNMENT AND GRADE OF  
**SANITARY SEWERS**  
TO BE CONSTRUCTED IN  
**EASEMENT**  
FROM WEST LINE OF TRACT TO EAST LINE OF KAUFFMAN AVE.  
**KAUFFMAN AVE.**  
FROM 15.5 FEET SOUTH OF SPARKLETT ST. TO 17.5 FEET  
NORTH OF SPARKLETT ST.

NOTE: No representative of the County Engineer will survey or lay out any portion of the work. The owner of this authorized easement shall furnish the County Engineer with grade scales, levels and all other data for all house connections and V.C.P. branches and shall provide stakes for them at their proper locations with stationing clearly marked. Any change in structure shall be requested in writing by the owner or his representative. No alterations shall be made in these plans without approval of the County Engineer.

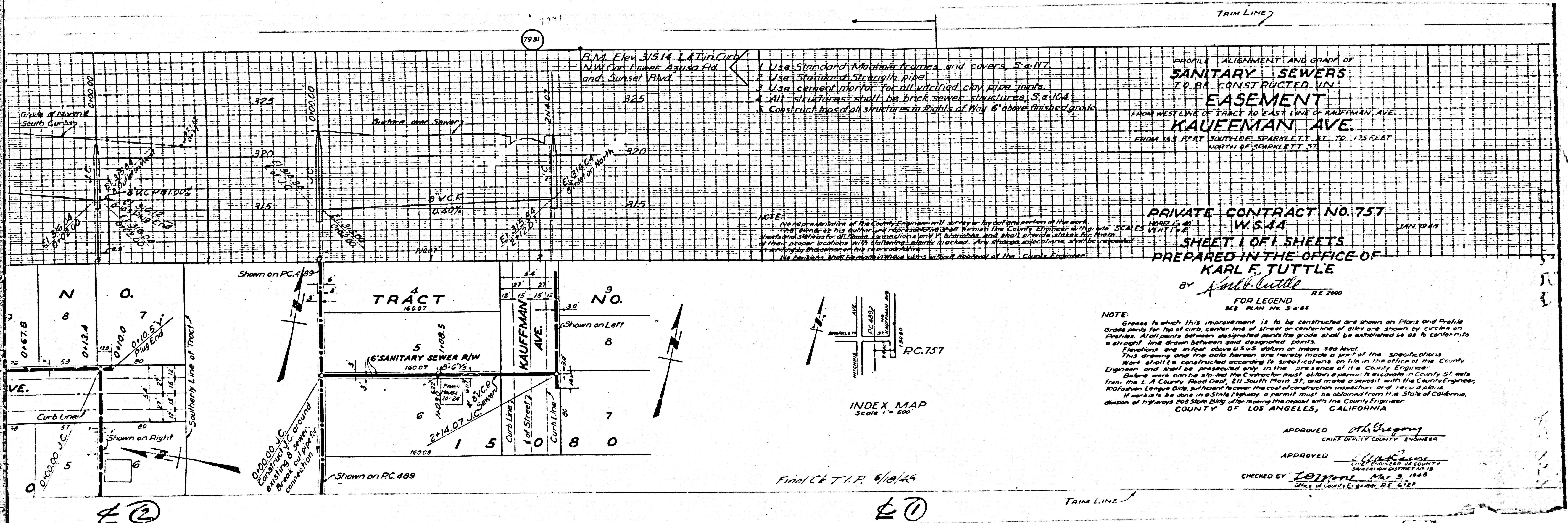
**PRIVATE CONTRACT NO. 757**  
**W. 5.44**  
JAN 1949  
**SHEET 1 OF 1 SHEETS**  
**PREPARED IN THE OFFICE OF**  
**KARL F. TUTTLE**  
BY *Karl F. Tuttle* RE 2000  
FOR LEGEND  
SEE PLAN No. S-464

NOTE:  
Grades to which this improvement is to be constructed are shown on Plans and Profile. Grade pins for top of curb, center line of street or center line of alley are shown by circles on Profiles. All elevations between designated points shall be established so as to conform to a straight line drawn between said designated points.  
Elevations are in feet above U.S.G.S. datum or mean sea level.  
This drawing and the data hereon are hereby made a part of the specifications. Work shall be constructed according to specifications on file in the office of the County Engineer and shall be prosecuted only in the presence of the County Engineer.  
Before work can be started the Contractor must obtain a permit to excavate in County Streets from the L.A. County Road Dept., 211 South Main St., and make a deposit with the County Engineer, 100 Fashion League Bldg, sufficient to cover the cost of construction inspection and record plans.  
If work is to be done in a State Highway a permit must be obtained from the State of California, Division of Highways 208 State Bldg, after making the deposit with the County Engineer.  
COUNTY OF LOS ANGELES, CALIFORNIA



Final C.E.T.P. 6/10/48

APPROVED *Al Hegen*  
CHIEF DEPUTY COUNTY ENGINEER  
APPROVED *Richard*  
CHIEF ENGINEER OF COUNTY SEWER DISTRICT # 15  
CHECKED BY *Tom* MAR 3, 1948  
OFFICE OF COUNTY ENGINEER, R.E. 6127



B.M. Elev. 3/514 L.A. in Cut  
 NW Corner of Azusa Rd  
 and Sunset Blvd

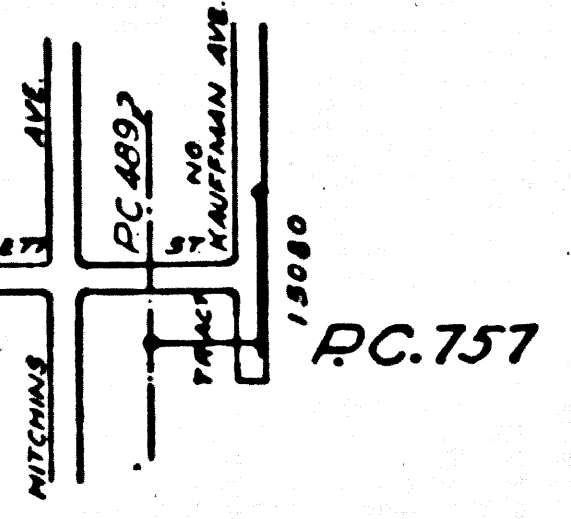
- 1 Use Standard Manhole frames and covers, 5'-11 1/2"
- 2 Use Standard Strength pipe
- 3 Use cement mortar for all vitrified clay pipe joints
- 4 All structures shall be brick sewer structures, 5'-0 1/4"
- 5 Construct tops of all structures in Right of Way 6" above finished grade

PROFILE ALIGNMENT AND GRADE OF  
**SANITARY SEWERS**  
 TO BE CONSTRUCTED IN  
**EASEMENT**  
 FROM WEST LINE OF TRACT TO EAST LINE OF KAUFFMAN AVE.  
**KAUFFMAN AVE.**  
 FROM 15.5 FEET SOUTH OF SPARKLETT ST. TO 17.5 FEET  
 NORTH OF SPARKLETT ST.

NOTE:  
 No representation of the County Engineer will survey or lay out any portion of the work.  
 The owner of this authorized representative shall furnish the County Engineer with the  
 plans and all data for all points, connections, manholes, branches, and shall provide stakes for  
 all proper locations with following: plenty marked. Any change in location shall be  
 approved by the contractor at his responsibility.  
 No work shall be made without approval of the County Engineer.

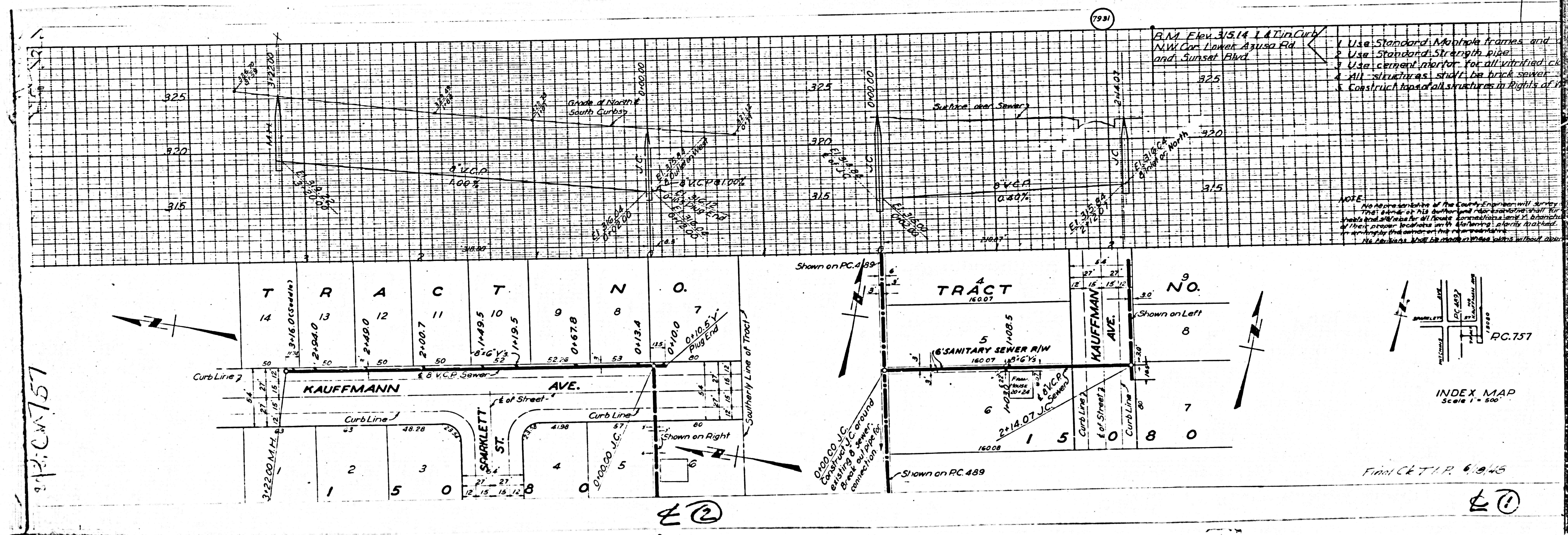
PRIVATE CONTRACT NO. 757  
 W.S. 44  
 SHEET 1 OF 1 SHEETS  
 PREPARED IN THE OFFICE OF  
**KARL F. TUTTLE**  
 BY *Karl F. Tuttle* RE 2000  
 FOR LEGEND SEE PLAN NO. 5-6-64

NOTE:  
 Grades to which this improvement is to be constructed are shown on Plans and Profile  
 Grade points for top of curb, center line of street or center line of sewer are shown by circles on  
 Profiles. All points between designated points the grade shall be established so as to conform to  
 a straight line drawn between said designated points.  
 Elevations are shown above U.S. 5 datum or mean sea level.  
 This drawing and the data hereon are hereby made a part of the specifications.  
 Work shall be constructed according to specifications on file in the office of the County  
 Engineer and shall be prosecuted only in the presence of a County Engineer.  
 Before work can be started the Contractor must obtain a permit to excavate in County Streets  
 from the L.A. County Road Dept., 211 South Main St., and make a deposit with the County Engineer,  
 200 Fashion League Bldg., sufficient to cover the cost of construction inspection, and also a plan  
 if work is to be done in a State Highway a permit must be obtained from the State of California,  
 division of Highways 608 State Bldg. after making the deal with the County Engineer.  
 COUNTY OF LOS ANGELES, CALIFORNIA



Final C.T.P. 4/10/46

APPROVED *A.H. Gregory*  
 CHIEF DEPUTY COUNTY ENGINEER  
 APPROVED *Karl F. Tuttle*  
 CHIEF ENGINEER OF COUNTY  
 SANITATION DISTRICT NO. 18  
 CHECKED BY *L. J. Jones* Mar 9 1946  
 OFFICE OF COUNTY ENGINEER, RE. 6727



R.C. 757

②

①