

8747

USE STANDARD STRENGTH PIPE EXCEPT AS NOTED
 USE CEMENT MORTAR PORTLAND MITREED GLAY PIPE JOINTS
 ENGAGE FOUR PART OF SEWER AT POINTS OF INTERFERENCE WITH POLES AS PER S-3-113
 CONSTRUCT HOUSE CONNECTIONS WITH INVERT AT PROP LINE 18 FEET BELOW CURB GRADE EXCEPT AS NOTED
 ALL STRUCTURES SHALL BE BRICK SEWER STRUCTURES AS PER PLAN NO. S-6-104
 USE STANDARD MANHOLE FRAMES AND COVERS AS PER PLAN NO. S-3-117
 CONSTRUCT TIPS OF ALL STRUCTURES IN RIGHTS OF WAY 1" ABOVE FINISHED GRADE
 RESURFACE ALL TRENCHES WITHIN RAVED AREA TO MEET LOS ANGELES COUNTY ROAD DEPT. OR STATE HIGHWAY REQUIREMENTS

NO REVISIONS SHALL BE MADE IN THESE PLANS WITHOUT APPROVAL OF THE COUNTY ENGINEER. NO REPRESENTATIVE OF THE COUNTY ENGINEER WILL SURVEY OR LAY OUT ANY PORTION OF THE WORK.
 THE OWNER OR HIS AUTHORIZED REPRESENTATIVE SHALL FURNISH THE COUNTY ENGINEER WITH GRADE SHEETS AND STATIONS OF ALL HOUSE CONNECTIONS AND TRENCHES AND SHALL PROVIDE STAKES FOR THEM AT THEIR PROPER LOCATIONS WITH STATIONING PLAINLY MARKED. ANY CHANGE OF LOCATION SHALL BE REQUESTED IN WRITING BY THE OWNER OR HIS REPRESENTATIVE.

PROFILE ALIGNMENT AND GRADE OF
SANITARY SEWERS
 TO BE CONSTRUCTED IN
RIGHTS OF WAY
 IN TRACT NO. 15179

PRIVATE CONTRACT NO. 761
 W. S. 37
 SHEET NO. 1 OF 3 SHEETS
 SCALE: VERT. 1" = 4'
 HORIZ. 1" = 40'

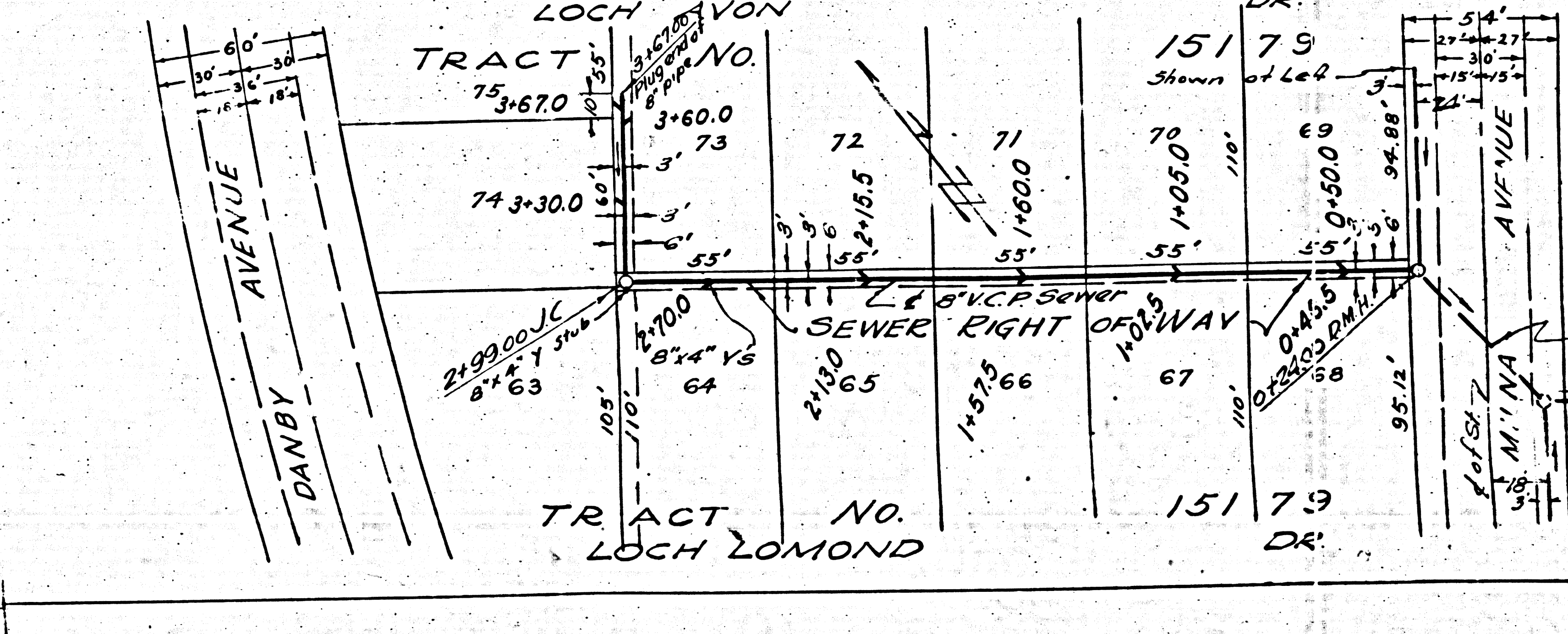
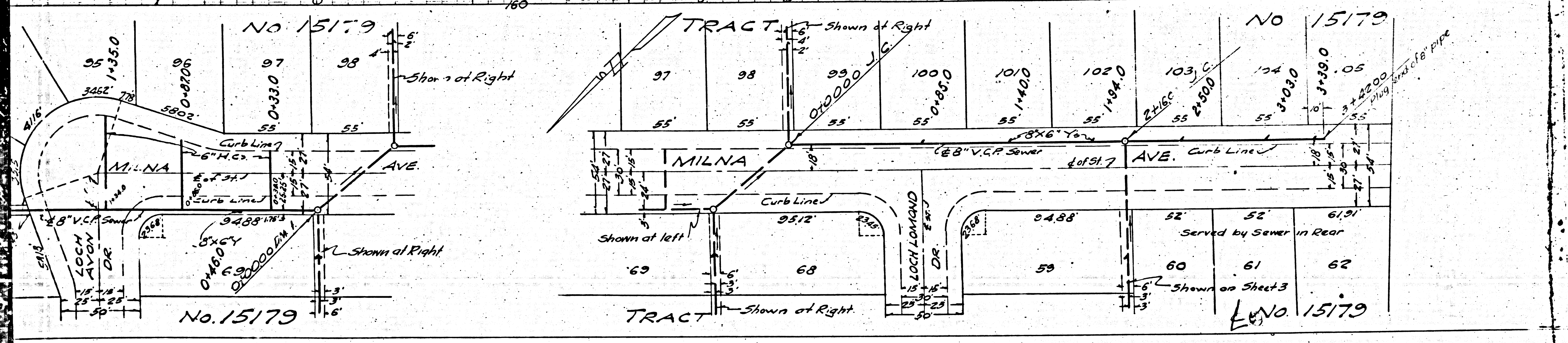
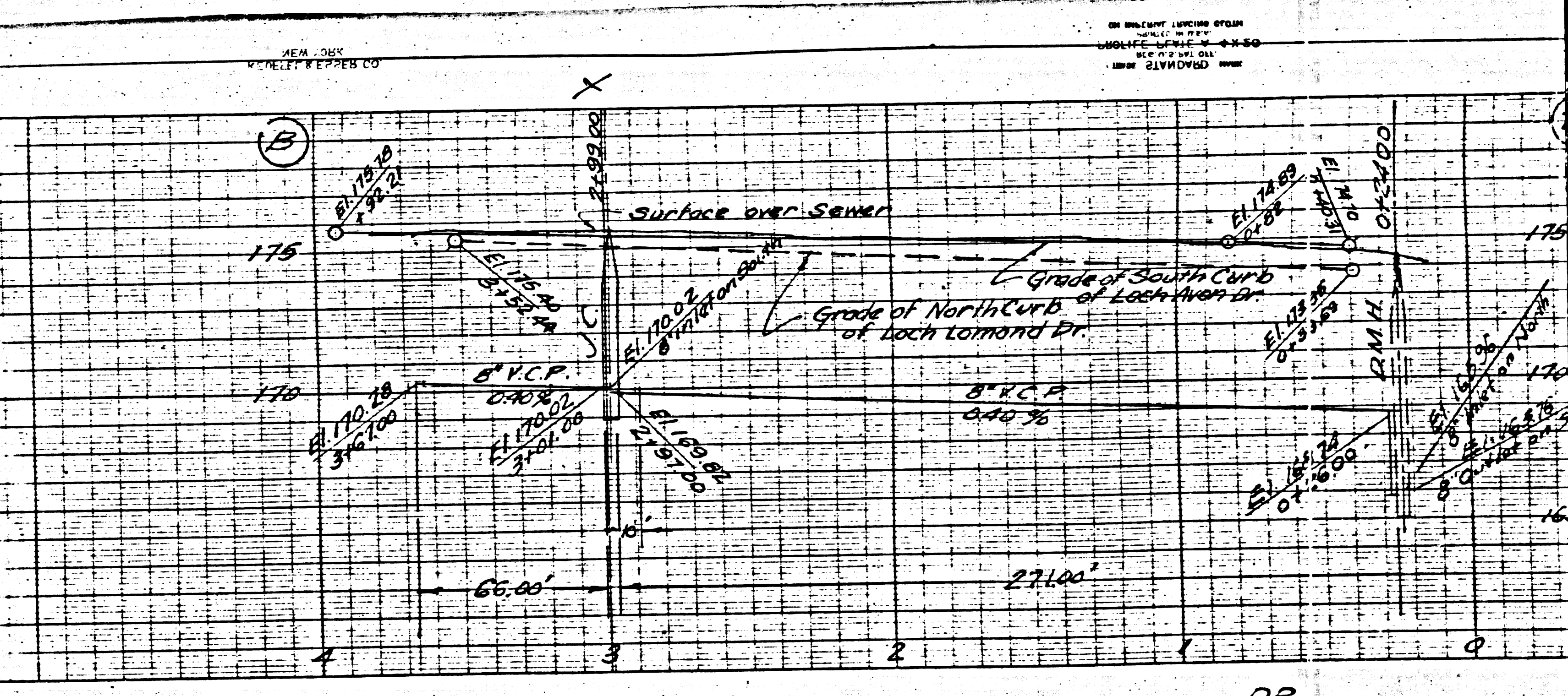
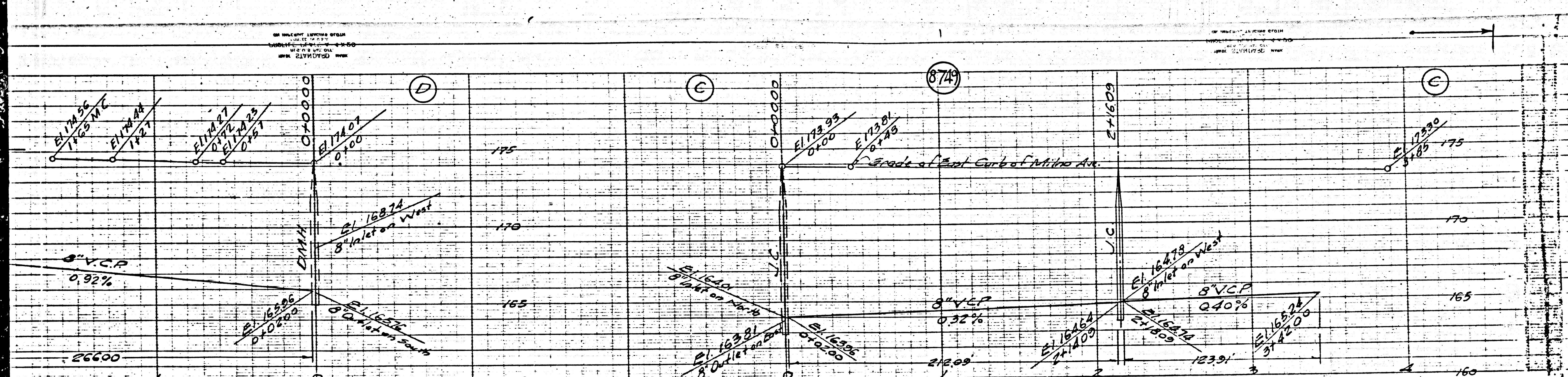
PREPARED IN THE OFFICES OF
KEMMERER ENGINEERING
 BY *John W. Kemmerer*
 REG. C. E. NO. 272
 FOR LEGEND
 SEE PLAN NO. S-244
 RECEIVED
 JAN 20 1947

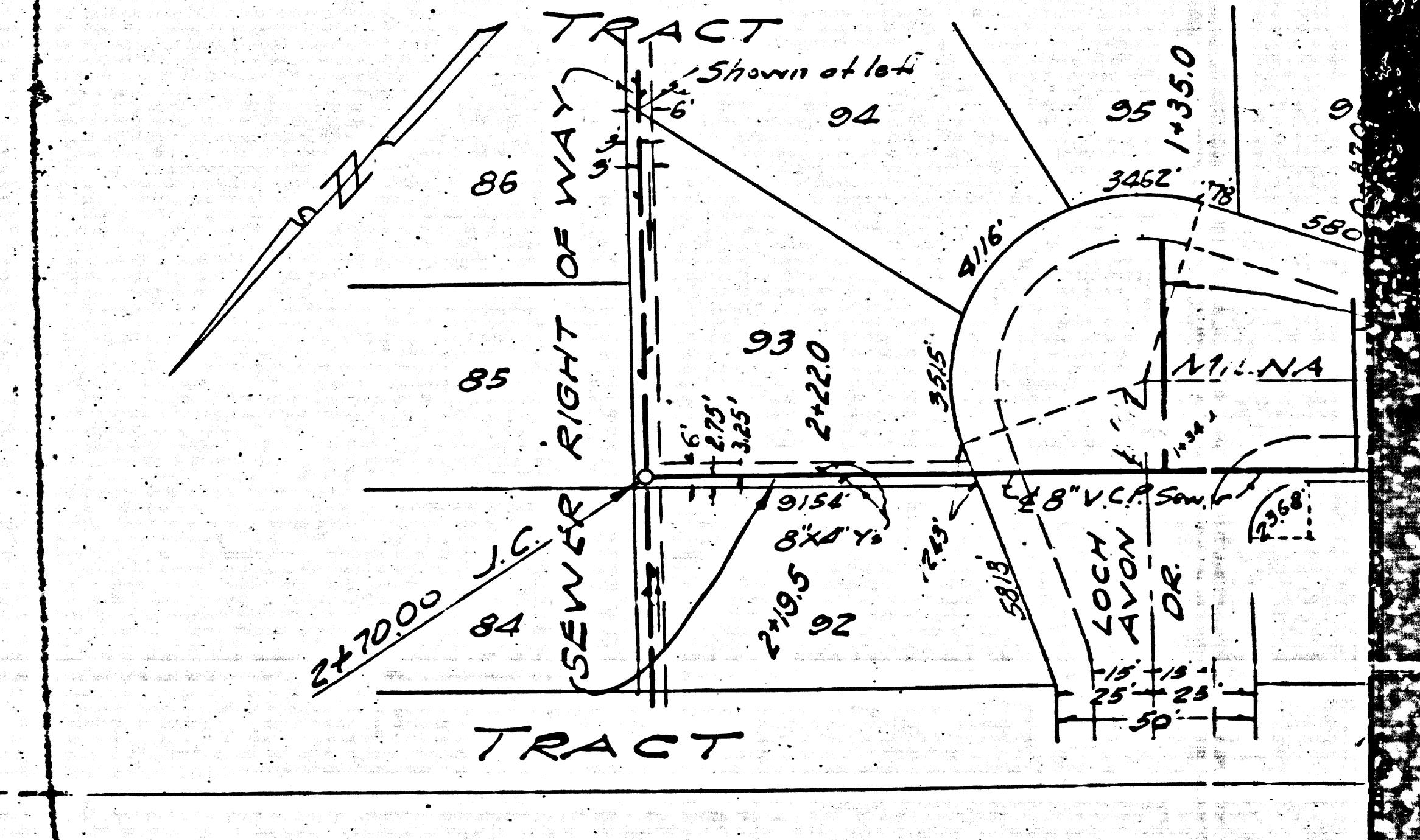
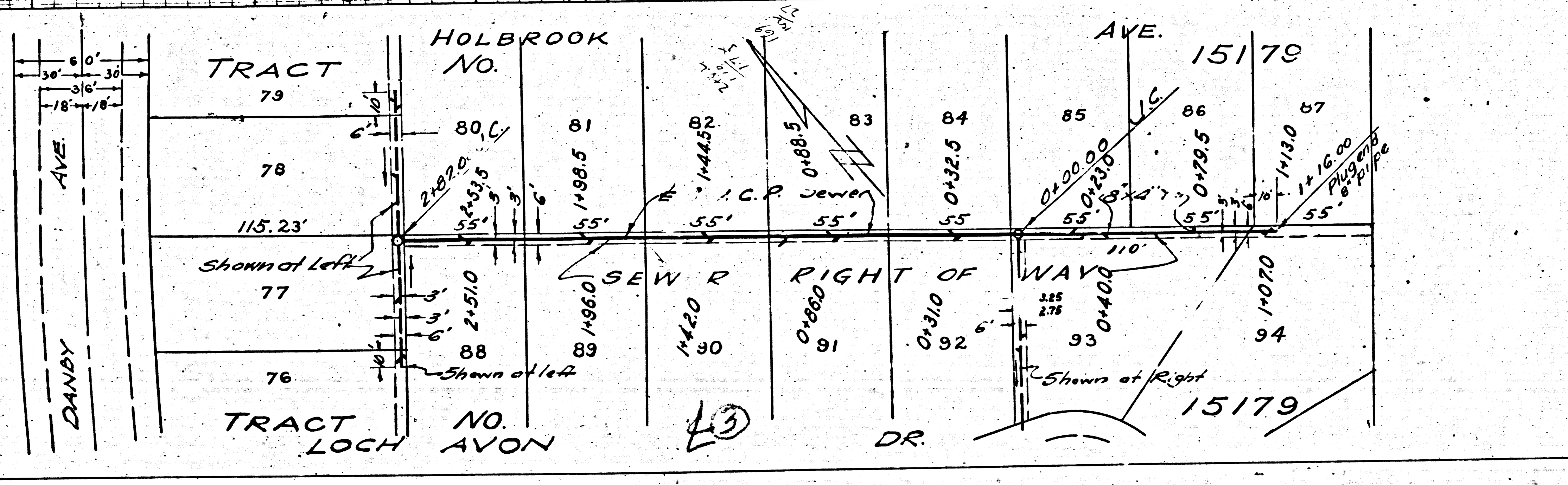
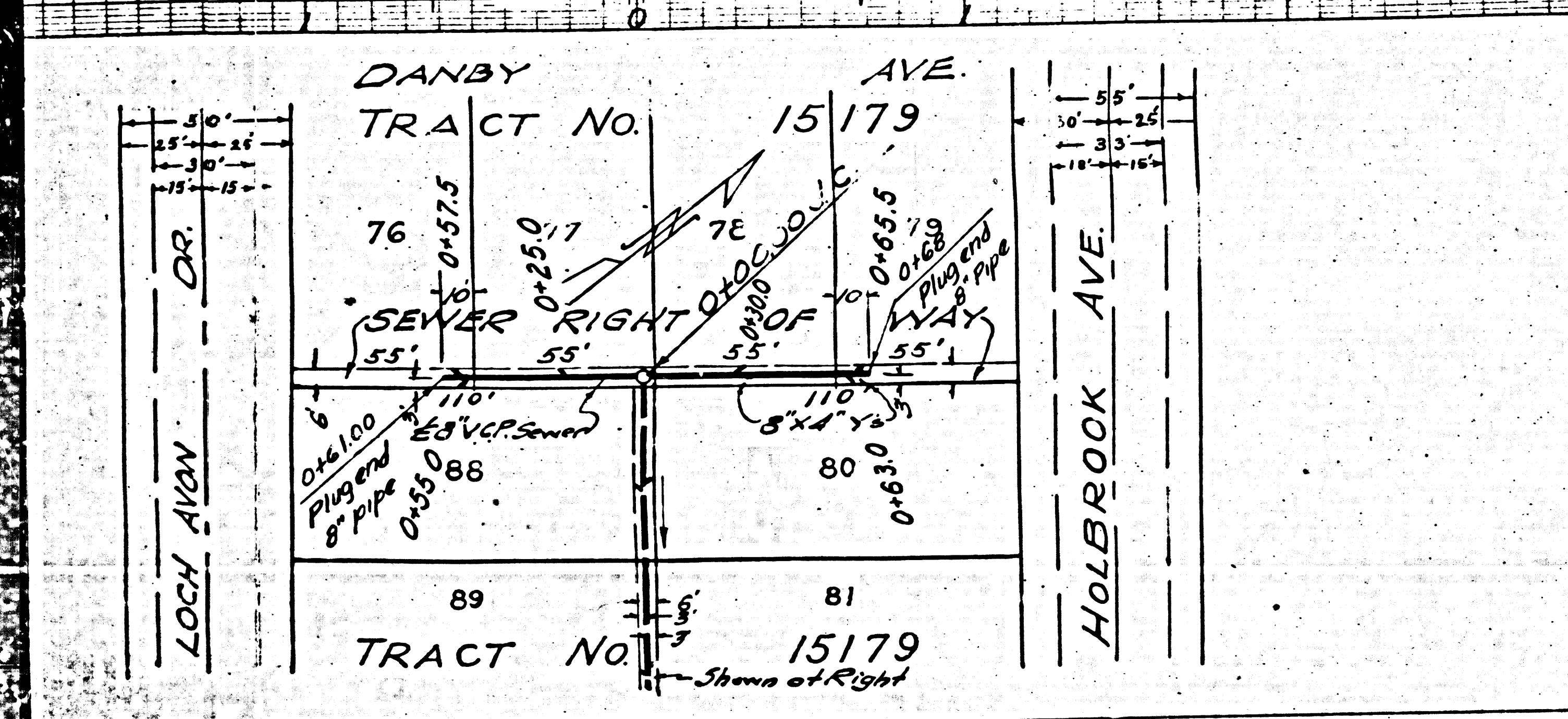
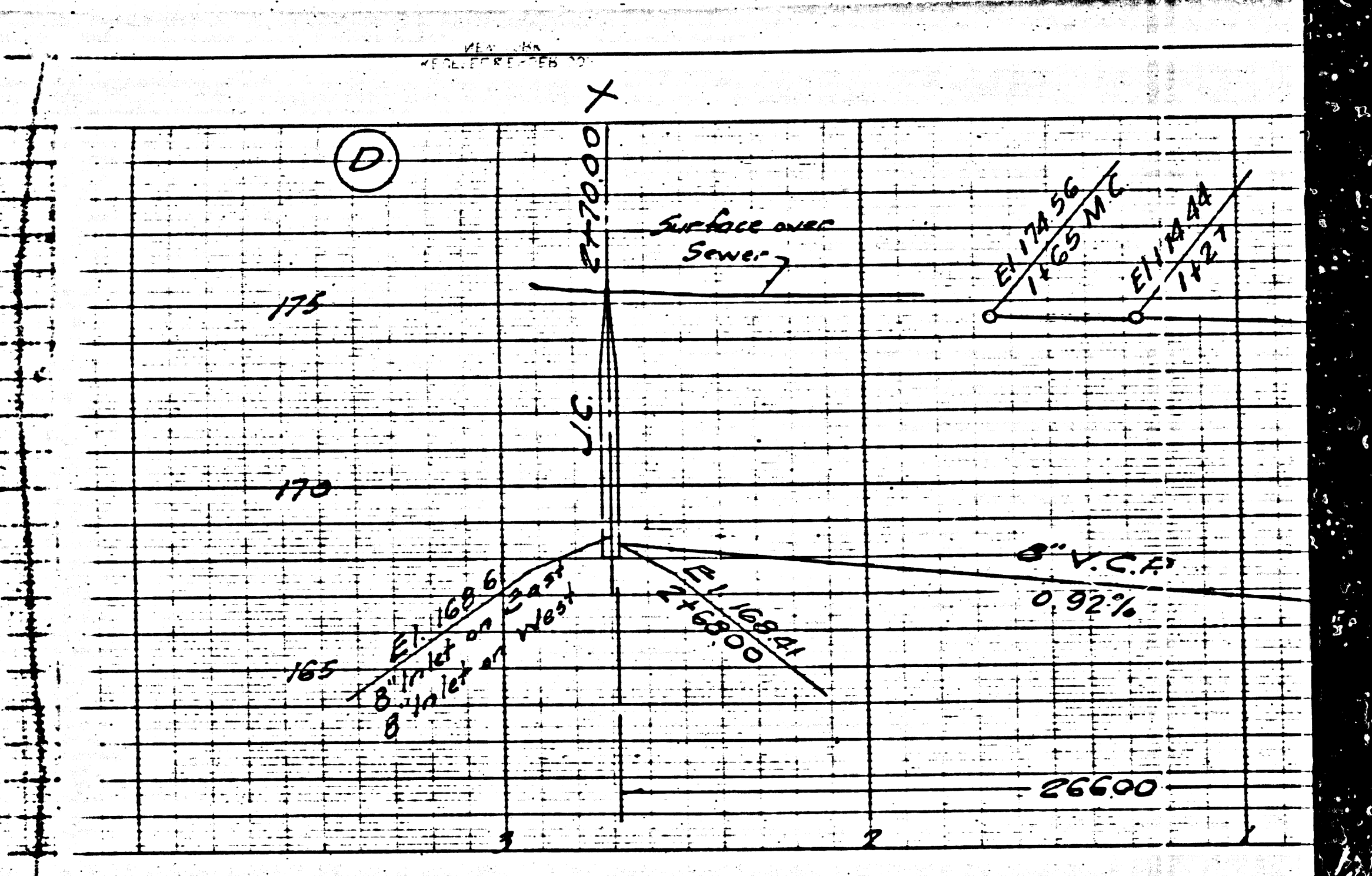
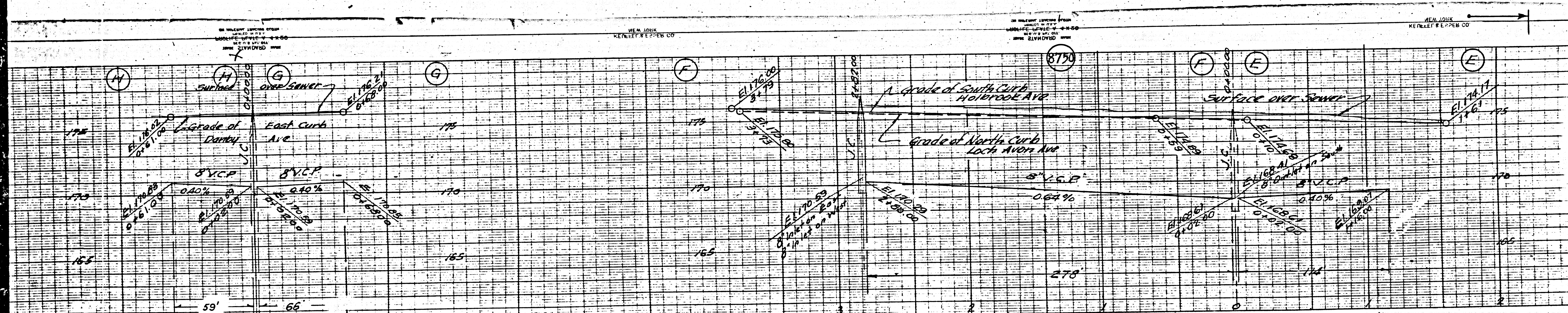
NOTE:
 GRADES TO WHICH THIS IMPROVEMENT IS TO BE CONSTRUCTED ARE SHOWN ON PLANS AND ON GRADE POINTS FOR TOP OF CURB, CENTER LINE OF STREET OR CENTER LINE OF ALLEY ARE SHOWN CIRCLES ON PROFILES. AT ALL POINTS BETWEEN DESIGNATED POINTS THE GRADE SHALL BE ESTABLISHED TO CONFORM TO A STRAIGHT LINE DRAWN BETWEEN SAID DESIGNATED POINTS.
 ELEVATIONS ARE IN FEET ABOVE U. S. G. S. DATUM OR MEAN SEA LEVEL.
 THE DRAWING AND THE DATA HEREON ARE HEREBY MADE A PART OF THE SPECIFICATIONS.
 WORK SHALL BE CONSTRUCTED ACCORDING TO SPECIFICATIONS ON FILE IN THE OFFICE OF THE COUNTY ENGINEER AND SHALL BE PROSECUTED ONLY IN THE PRESENCE OF THE COUNTY ENGINEER.
 BEFORE WORK CAN BE STARTED, THE CONTRACTOR MUST OBTAIN A PERMIT TO EXCAVATE COUNTY STREETS FROM THE L. A. COUNTY ROAD DEPT., 211 SOUTH MAIN ST., AND MAKE A DEPOSIT WITH THE COUNTY ENGINEER, 700 UNION LEAGUE BUILDING, SUFFICIENT TO COVER THE COST OF CONSTRUCTION INSPECTION AND RECORD PLANS.
 IF WORK IS TO BE DONE IN A STATE HIGHWAY, A PERMIT MUST BE OBTAINED FROM THE CALIFORNIA DIVISION OF HIGHWAYS, 808 STATE BUILDING, AFTER MAKING THE DEPOSIT WITH THE COUNTY ENGINEER.

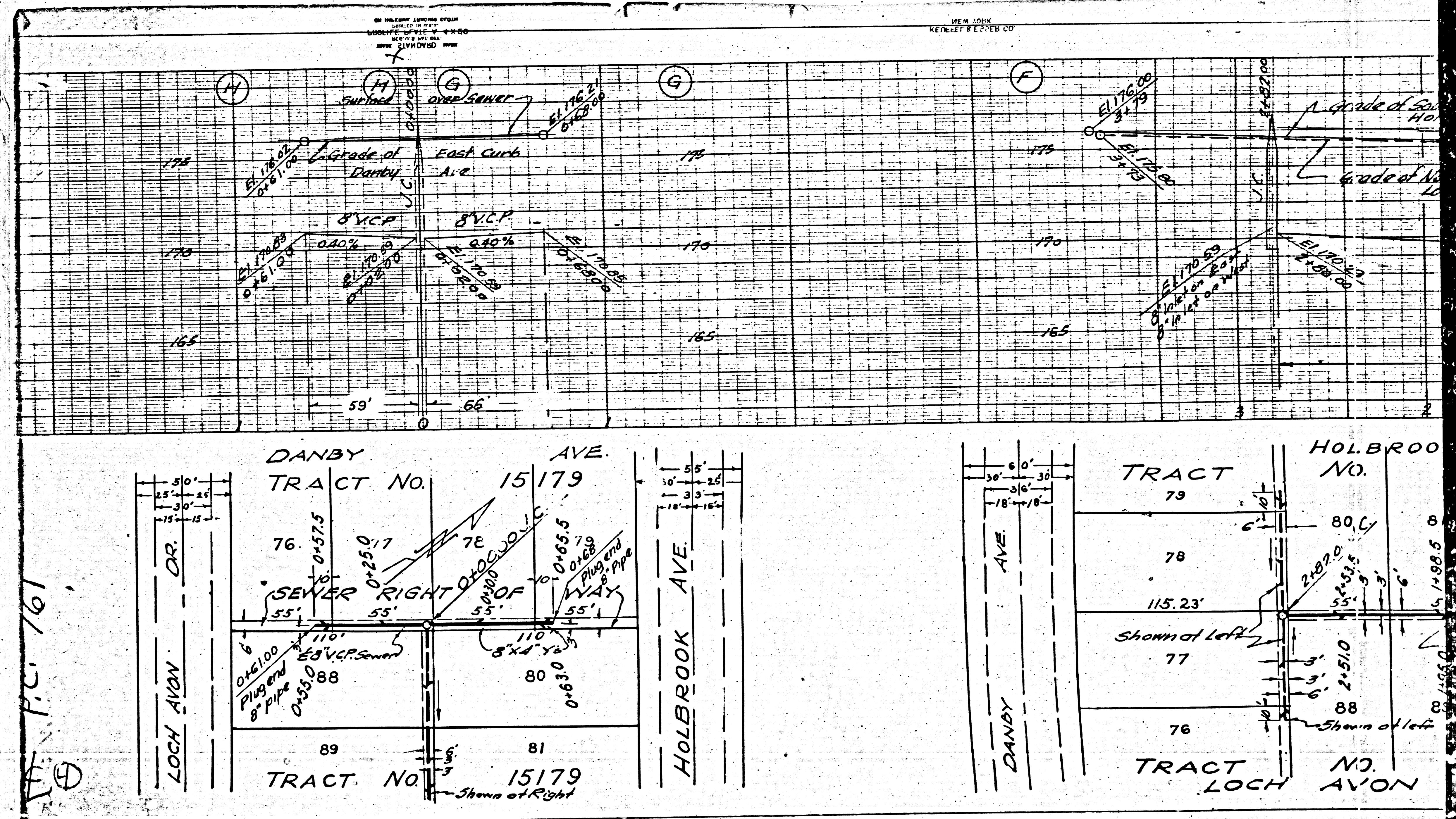
COUNTY OF LOS ANGELES, CALIFORNIA
 APPROVED: *W. S. 37*
 COUNTY ENGINEER

Checked by *Luigi Rotolo - W. S. 37* - 4-19-47 APPROVED: *John W. Kemmerer*
 COUNTY ENGINEER

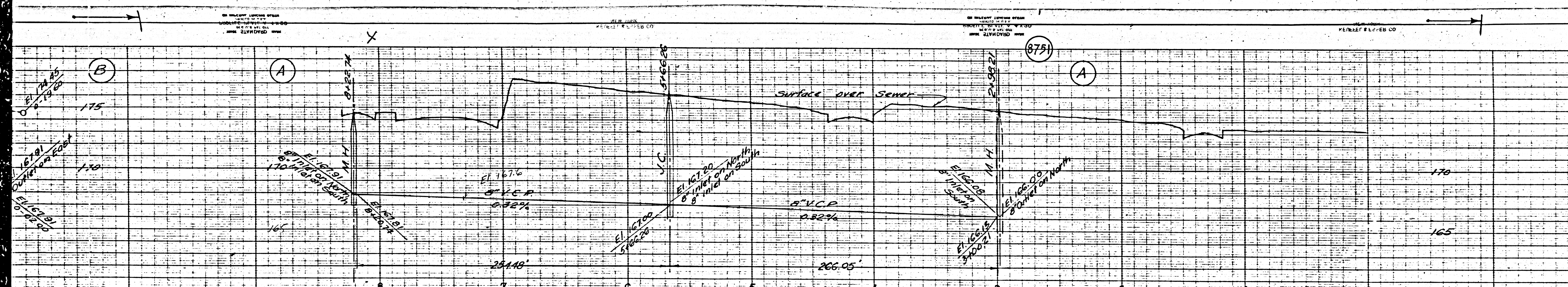
INDEX MAP
 SCALE: 1" = 400'
 P.C. 761







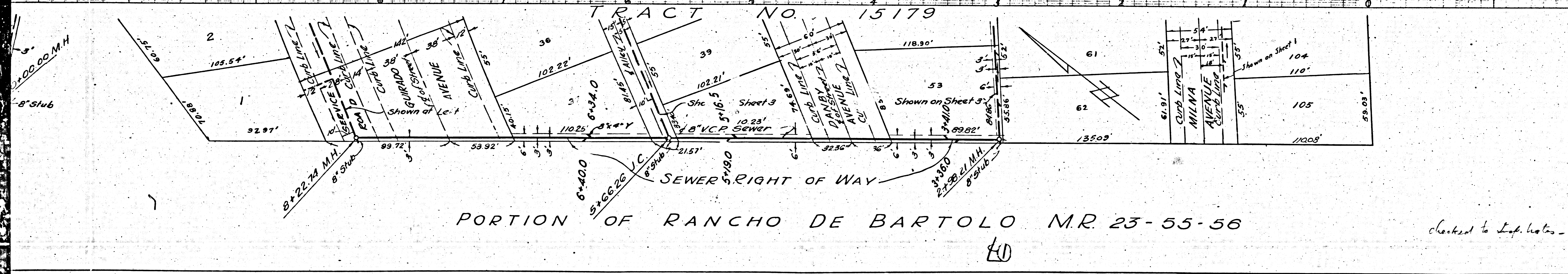
P.C. 761



PROFILE, ALIGNMENT AND GRADE OF
SANITARY SEWERS
 TO BE CONSTRUCTED IN
GUIRADO AVE
 BETWEEN LOCH AVON DR. AND S. LINE TR. NO. 15179
 BETWEEN GUIRADO AVE. AND WESTERLY TERMINATION
 LOCH AVON DR.
 BETWEEN GUIRADO AVE. AND WESTERLY TERMINATION
RIGHTS OF WAY
 IN TRACT NO. 15179

PRIVATE CONTRACT NO. 76
 W.S. 37
 SHEET 2 OF 3 SHEETS
 HOR. 1"=40'
 VERT. 1"=4'
 FEBRUARY 1929

PREPARED IN THE OFFICES OF KEMMERER ENGINEERS
 John M. Kemmerer
 REG. C. E. 272



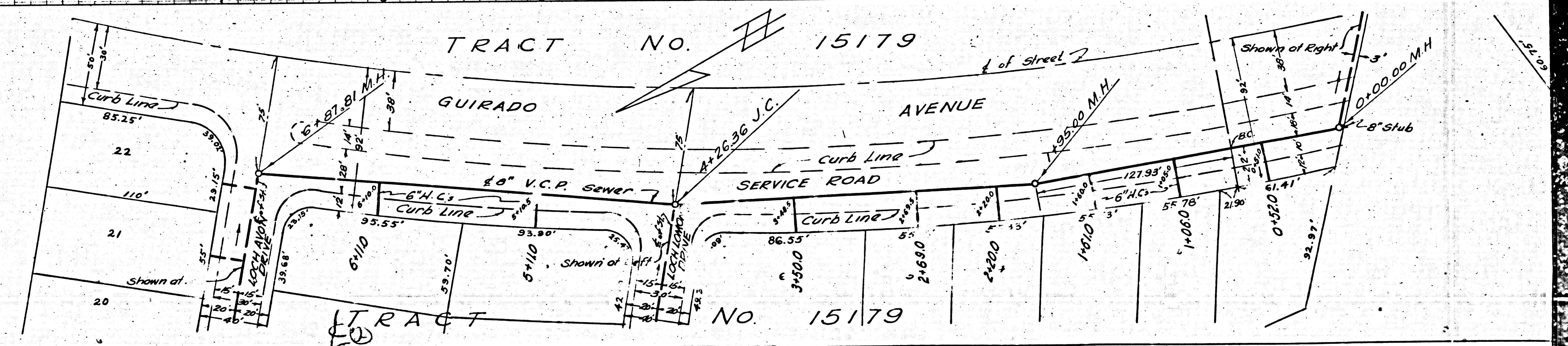
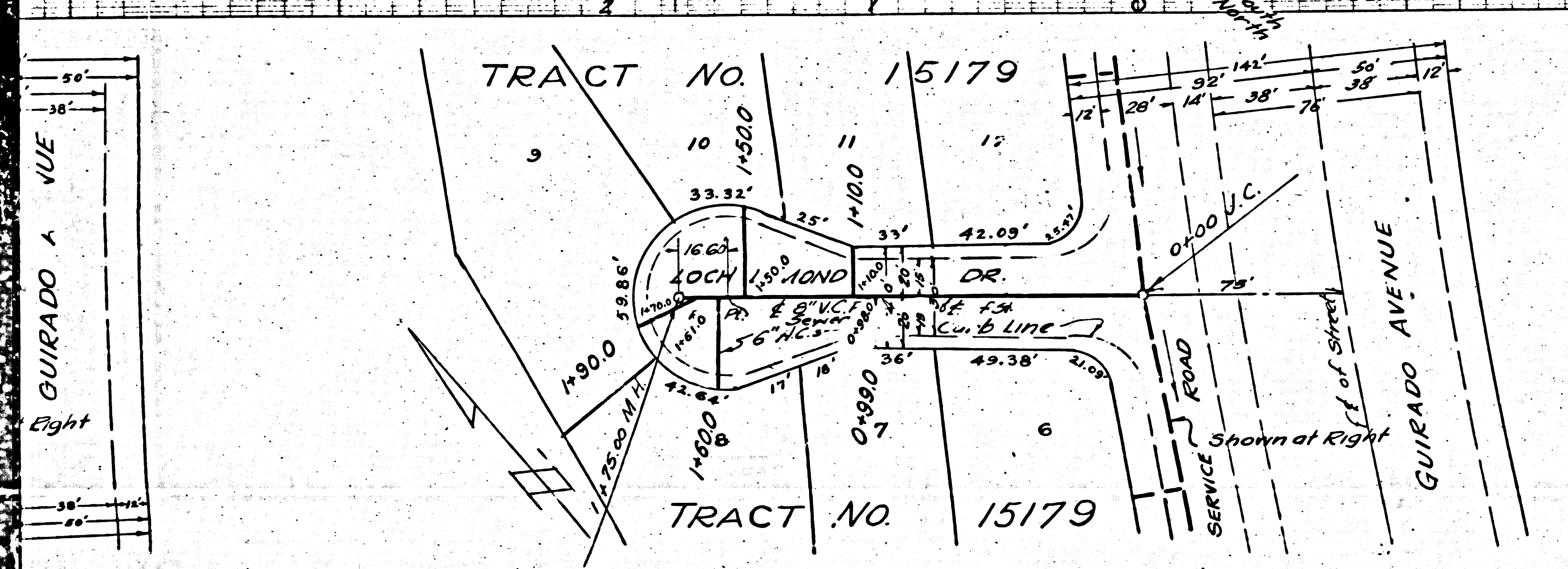
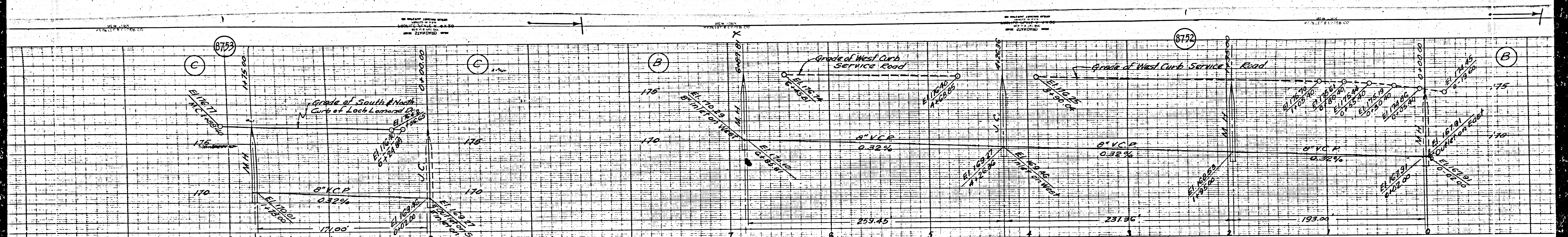
PORTION OF RANCHO DE BARTOLO M.R. 23-55-56

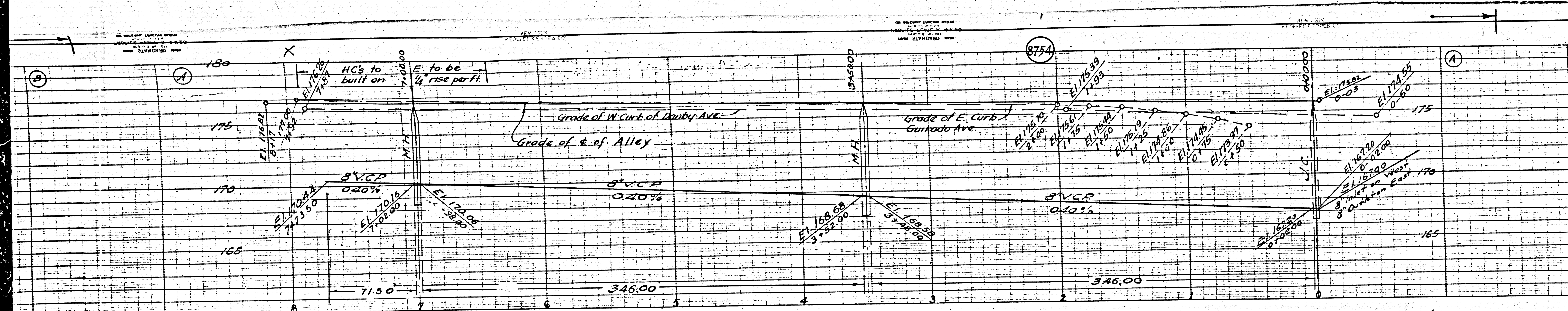
SEE SHEET ONE FOR LEGEND AND NOTE

COUNTY OF LOS ANGELES, CALIFORNIA
 APPROVED: *W. H. Shogren*
 CHIEF DEPUTY COUNTY ENGINEER
 APPROVED: *W. H. Shogren*
 ASST. CHIEF ENGINEER OF COUNTY SANITATION DISTRICT NO. 2
 CHECKED BY: *W. H. Shogren*
 OFFICE OF COUNTY ENGINEER
 REG. C. E. NO. 622

checked to top notes - W. H. Shogren - 4-19-29

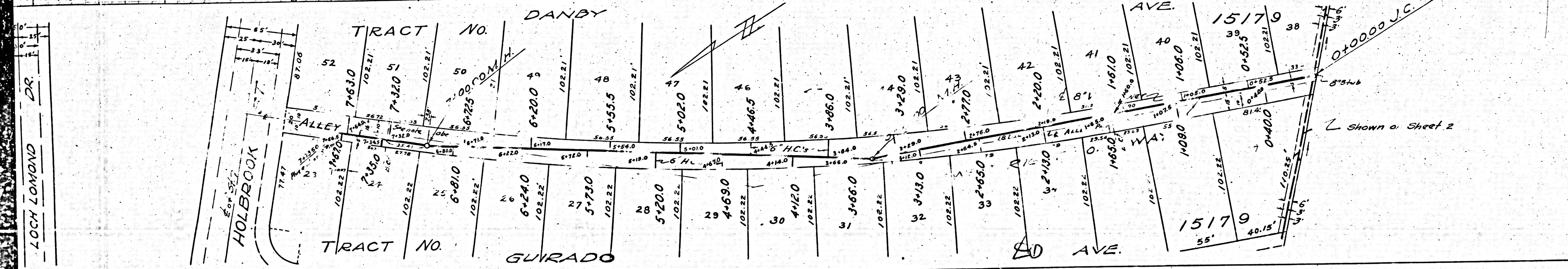
LD





PROFILE, ALIGNMENT AND GRADE OF
 SANITARY SEWERS
 TO BE CONSTRUCTED IN
 RIGHTS OF WAY
 IN TRACT NO. 15179

PRIVATE CONTRACT NO. 761
 W.S. 37
 SHEET 3 OF 3 SHEETS
 HOR. 1" = 40'
 SCALE VERT. 1" = 4'
 FEBRUARY 1948
 PREPARED IN THE OFFICES OF
 KEMMERER ENGR. CO.

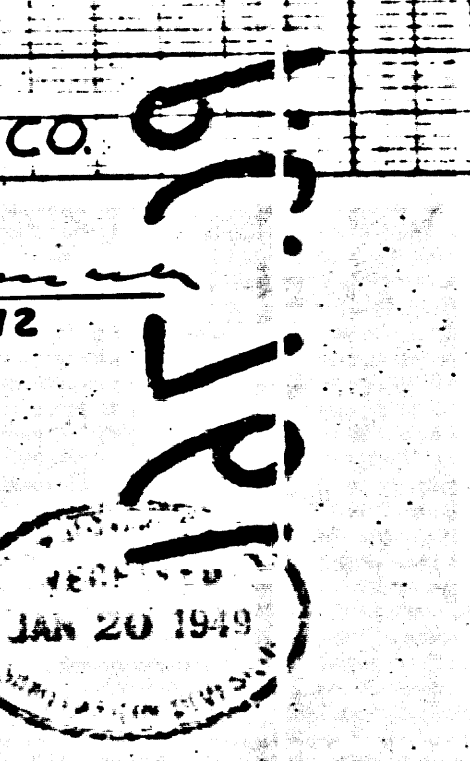


John M. Kemmerer
 REG. C.E. NO. 272

SEE SHEET ONE
 FOR LEGEND AND NOTE

COUNTY OF LOS ANGELES, CALIFORNIA
 APPROVED *W. H. ...*
 CHIEF DEPUTY COUNTY ENGINEER
 APPROVED *...*
 CHIEF ENGINEER OF
 SANITATION DISTRICT

CHECKED BY *...*
 OFFICE OF COUNTY ENGINEER
 REG. C.E. NO. 6322



LOCH LOMOND DR

