

B.M. Elev. 329.59 V. & N. West Curb of Tyler Ave. 50' North of Easement St. Rod. Dept. L.A. B.M. 2044 (5A)

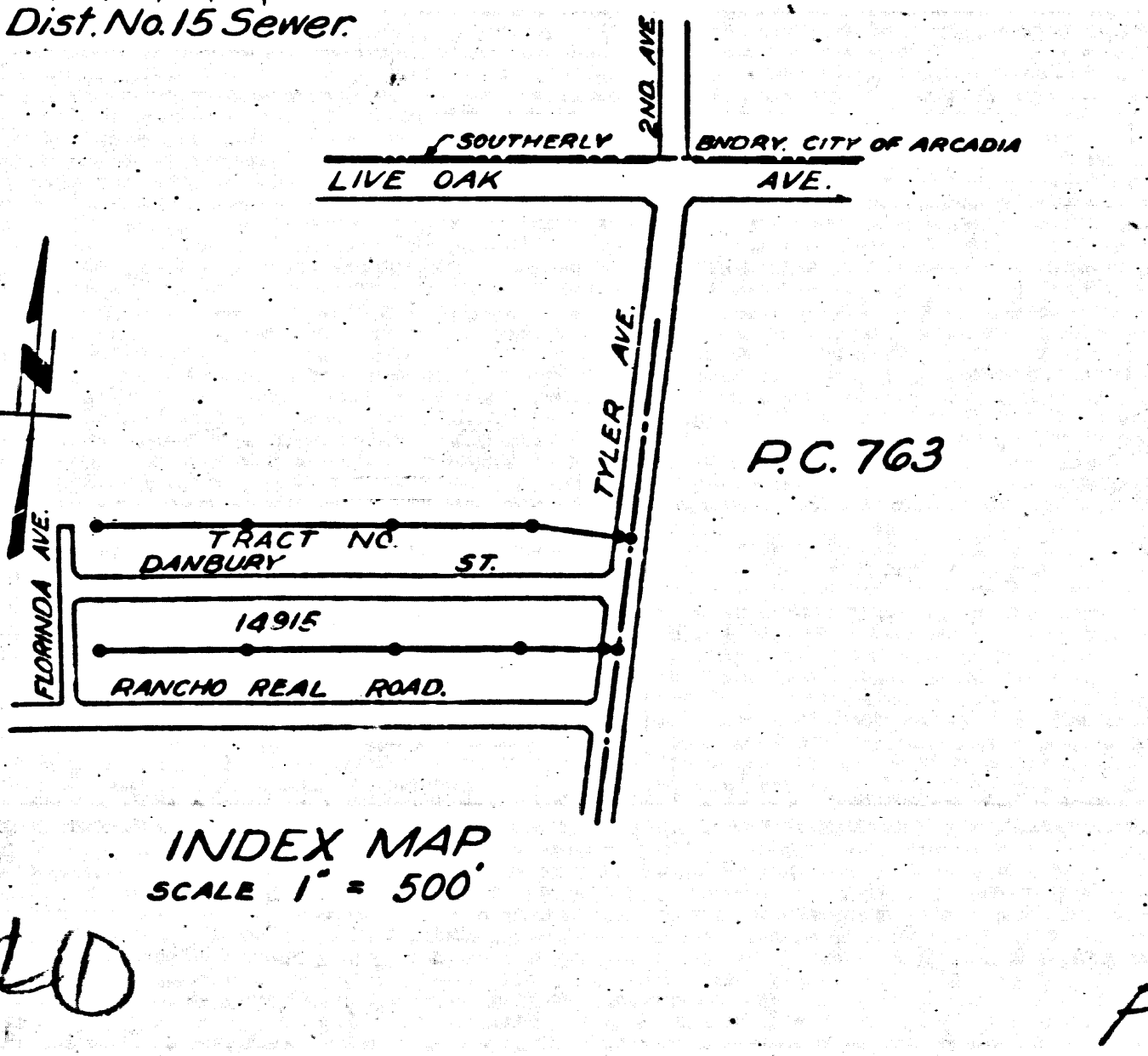
1. Use Standard Manhole Frames and Covers, S-a-117
2. Use Standard Strain Pipe
3. Use Cement Mortar for all vitrified clay pipe joints.
4. All structures shall be brick sewer structures, S-a-104, except as noted.
5. Construct tops of manholes in Easements A' above finished grade.

PROFILE ALIGNMENT AND GRADE OF
SANITARY SEWERS
 TO BE CONSTRUCTED IN
EASEMENT
 NORTH OF DANBURY ST.
 FROM TYLER AVE. TO 1270 FEET WEST
EASEMENT
 SOUTH OF DANBURY ST.
 FROM TYLER AVE. TO 1236 FEET WEST

NOTE: No representation of the County Engineer will survey or lay out any portion of the work. The owner or his authorized representative shall furnish the County Engineer with grade sheets and station lists, layout, connections, and Y branches, and shall provide stakes for them at their proper locations with staking plainly marked. Any change in locations shall be requested in writing by the owner or his representative. No changes shall be made in these plans without approval of the County Engineer.

PRIVATE CONTRACT NO. 763
 W.S. 46 MARCH 1948
 SHEET 1 OF 1 SHEETS
 PREPARED IN THE OFFICE OF
 KARL F. TUTTLE
 BY: Knobb, Tuttle R.E. 2000

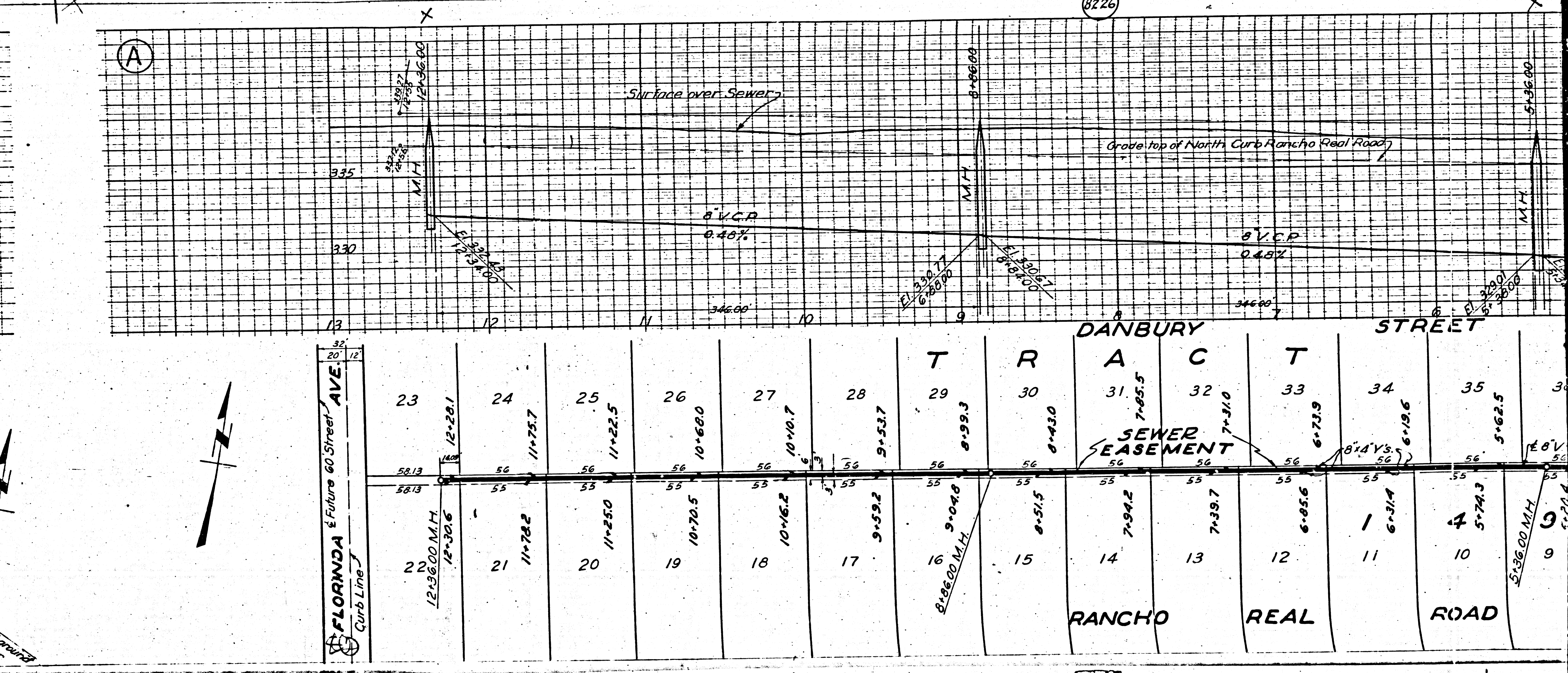
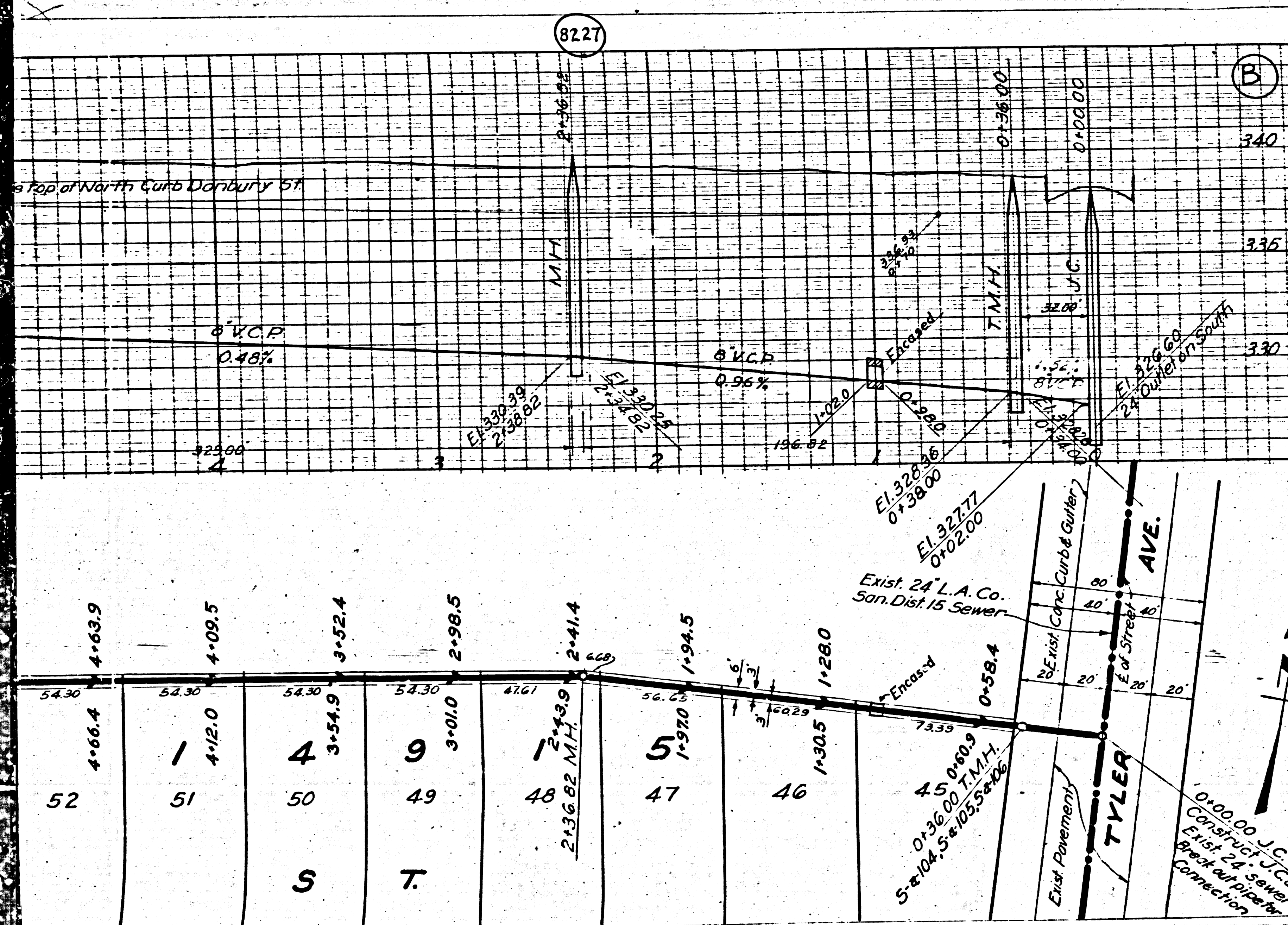
FOR LEGEND:
 SEE PLAN No. S-664
 NOTE: Grades to which this improvement is to be constructed are shown on Plans and Profile. Grade points for top of curb, center line of street or center line of alley are shown by circles on a straight line drawn between said designated points. Elevations are in feet above U.S.C.S. datum or mean sea level. This drawing and the data hereon are hereby made a part of the specifications. Work shall be constructed according to specifications on file in the office of the County Engineer, and shall be prosecuted only in the presence of the County Engineer. Before work can be started the contractor must obtain a permit to excavate in County Streets from the L.A. County Road Dept., 211 South Main St., and make a deposit with the County Engineer, 700 Fashion League Bldg., sufficient to cover the cost of construction inspection and record plans. If work is to be done in a State Highway, a permit must be obtained from the State of California, division of highways, 800 State Bldg. after making the deposit with the County Engineer. COUNTY OF LOS ANGELES, CALIFORNIA



APPROVED: [Signature] COUNTY ENGINEER
 APPROVED: [Signature] CHIEF ENGINEER OF COUNTY SANITATION DISTRICT NO. 15
 CHECKED BY: [Signature] Mar 12, 1948
 Office of County Engineer R.E. 6322

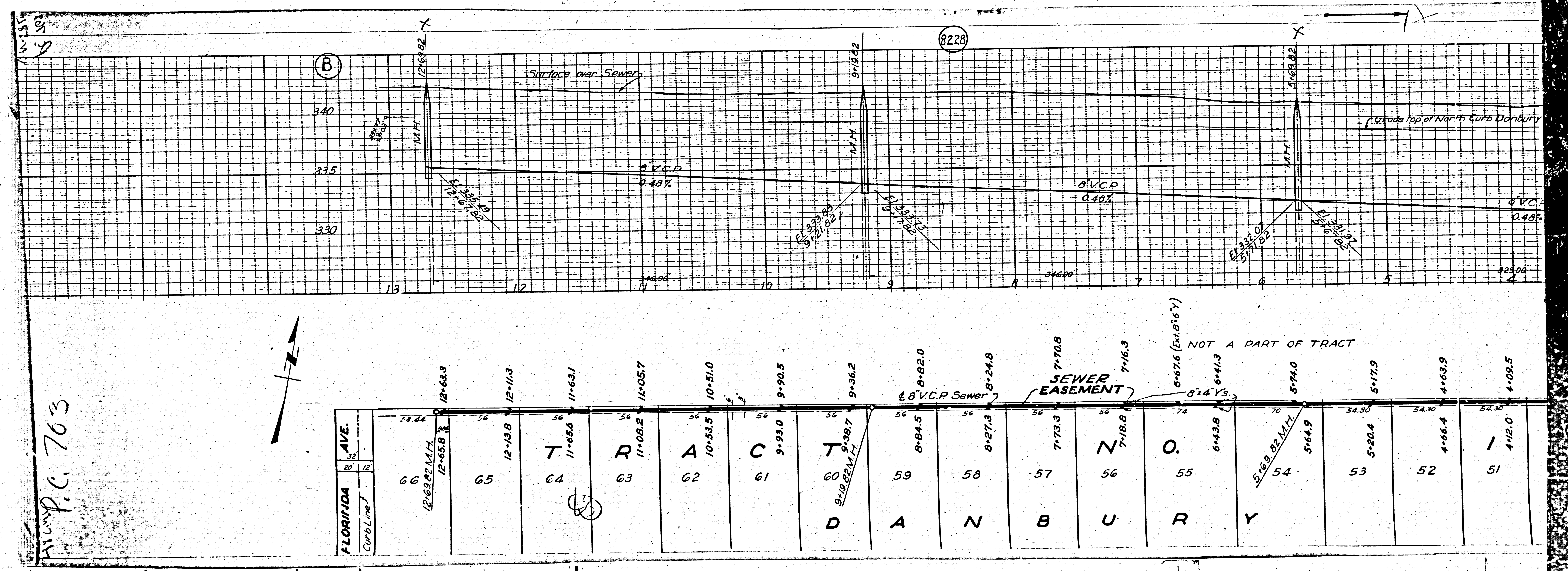
Final CK T.T.P. 11/22/48

BC 763

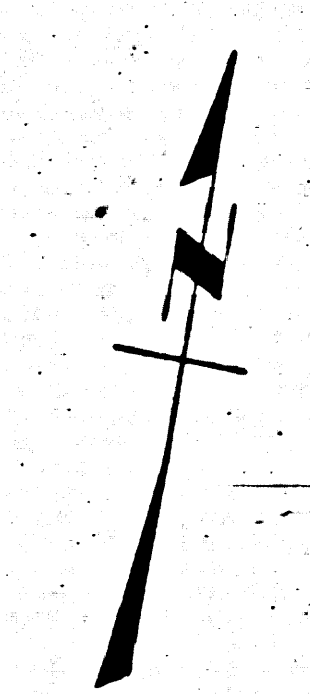


DANBURY STREET																																						
3	4	5	6	7	8	9	10	11	12	13	14	15	16	17	18	19	20	21	22	23	24	25	26	27	28	29	30	31	32	33	34	35	36					

Sewer Easement: 8" V.C.P. 0.48% grade, 56' x 56' easement area.



100 P.C. 763
 FLORIDA AVE. Curblines
 12+63.82 M.H.
 12+65.8
 12+14.3
 T 11+65.6
 R 11+08.2
 A 10+51.0
 C 9+93.0
 T 9+38.7
 9+19.82 M.H.
 8+84.5
 8+27.3
 7+73.3
 7+18.8
 N 7+16.3
 O 6+43.8
 5+16.9
 5+17.9
 4+66.4
 4+09.5



8228

SEWER EASEMENT

NOT A PART OF TRACT