

6189

B.M. Elev. 4472
Inv. of 8" V.C.P. 1.16' above

- (1) USE STANDARD MANHOLE FRAMES AND COVERS 3'-0" DIA.
- (2) USE STANDARD STRENGTH PIPE.
- (3) USE CEMENT MORTAR FOR ALL VITRIFIED CLAY PIPE JOINTS.
- (4) RESURFACE ALL TRENCH WITHIN PAVED AREA TO MEET LOS ANGELES COUNTY ROAD DEPT. REQUIREMENTS.
- (5) ALL STRUCTURES SHALL BE BRICK SEWER STRUCTURES, 3'-0" DIA.

NOTE: NO REPRESENTATIVE OF THE COUNTY ENGINEER WILL SURVEY OR LOCATE ANY PORTION OF THE WORK. THE OWNER OR HIS AUTHORIZED REPRESENTATIVE SHALL FURNISH THE COUNTY ENGINEER WITH GRADE SHEETS AND PROFILES OF ALL HOUSE CONNECTIONS AND BRANCHES AND SHALL PROVIDE SPACES FOR THEM AT THEIR PROPER LOCATIONS WITH STATIONING PLAINLY MARKED. ANY CHANGE OF LOCATION SHALL BE REQUESTED IN WRITING BY THE OWNER OR HIS REPRESENTATIVE. NO DIMENSIONS SHALL BE MADE IN THESE PLANS WITHOUT APPROVAL OF THE COUNTY ENGINEER.

PROFILES, ALIGNMENT AND GRADE OF
SANITARY SEWERS
TO BE CONSTRUCTED IN
17TH STREET
BETWEEN VINE ST. AND FIRST ALLEY EAST OF WALNUT ST.

PRIVATE CONTRACT NO 767
W.S. 33
ONE SHEET MARCH 1948

SCALE: VERT. 1" = 4'
HORIZ. 1" = 60'

PREPARED IN THE OFFICES OF

ROBIN A. GRAVES, ENGINEERING CO.
BY: *Robin A. Graves*
REG. C.E. NO 6107
SEE PLAN NO S-2-64

FOR LEGEND
NOTE: GRADES TO WHICH THIS IMPROVEMENT IS TO BE CONSTRUCTED ARE SHOWN ON PLANS AND PROFILES. GRADE POINTS FOR TOP OF CURB, CENTER LINE OF STREET OR CENTER LINE OF ALLEY ARE SHOWN BY CIRCLES ON PROFILES. AT ALL POINTS BETWEEN DESIGNATED POINTS THE GRADE SHALL BE ESTABLISHED SO AS TO CONFORM TO A STRAIGHT LINE DRAWN BETWEEN SAID DESIGNATED POINTS. ELEVATIONS ARE IN FEET ABOVE U.S.C.S. DATUM OR MEAN SEA LEVEL. THIS DRAWING AND THE DATA HEREON ARE HEREBY MADE A PART OF THE SPECIFICATIONS. WORK SHALL BE CONSTRUCTED ACCORDING TO SPECIFICATIONS ON FILE IN THE OFFICE OF THE COUNTY ENGINEER AND SHALL BE PROSECUTED ONLY IN THE PRESENCE OF THE COUNTY ENGINEER. BEFORE WORK CAN BE STARTED, THE CONTRACTOR MUST OBTAIN A PERMIT TO EXCAVATE IN COUNTY STREETS FROM THE L.A. COUNTY ROAD DEPT., 211 S. MAIN ST., AND MAKE A DEPOSIT WITH THE COUNTY ENGINEER, 700 FAYMAN LEAGUE BLDG., SUFFICIENT TO COVER THE COST OF CONSTRUCTION INSPECTION AND RECORD PLANS.

COUNTY OF LOS ANGELES, CALIFORNIA

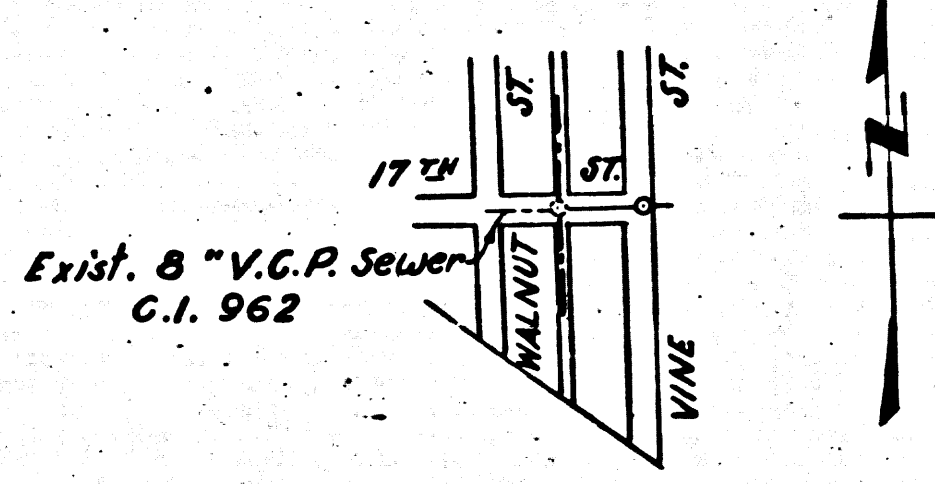
APPROVED *E. J. Arnold*
COUNTY ENGINEER

APPROVED *Edmund Mac 11, 1948*
CHIEF ENGINEER OF COUNTY SANITATION DISTRICT NO. 2

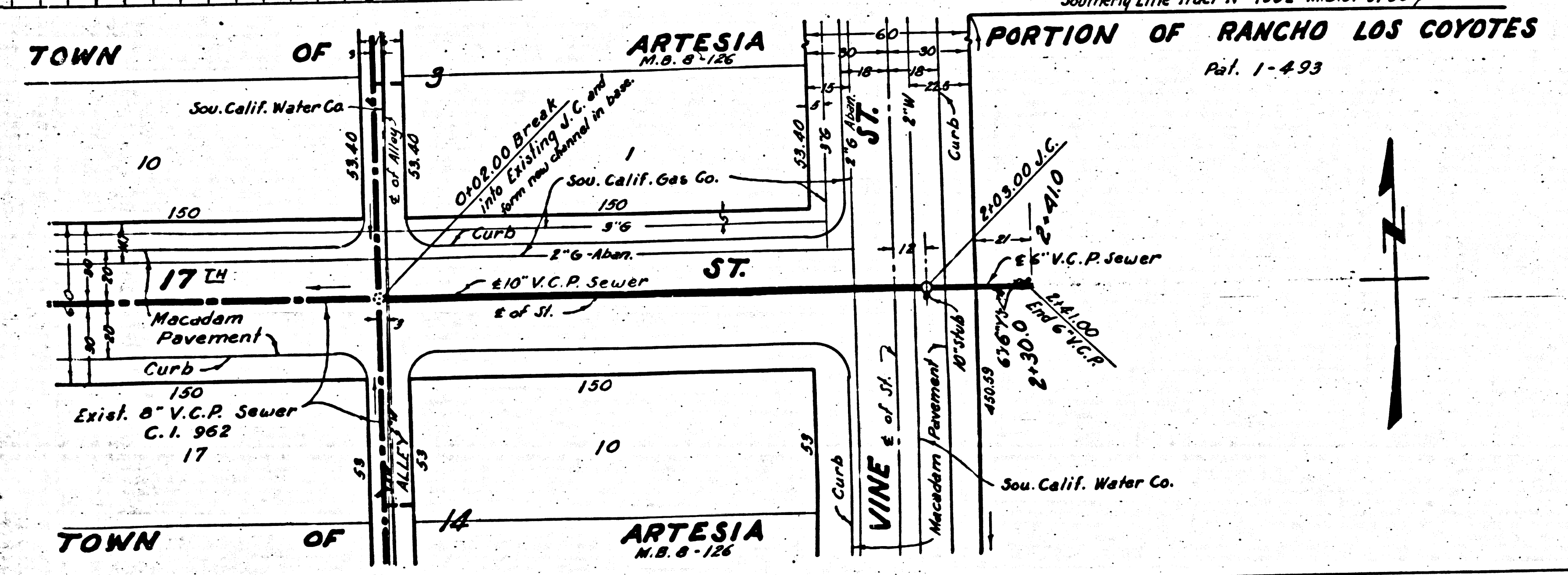
CHECKED BY *Edmund Mac 11, 1948*
OFFICE OF COUNTY ENGINEER, 180 S.E. NO 4322

Final CK TRIP 10/2/48

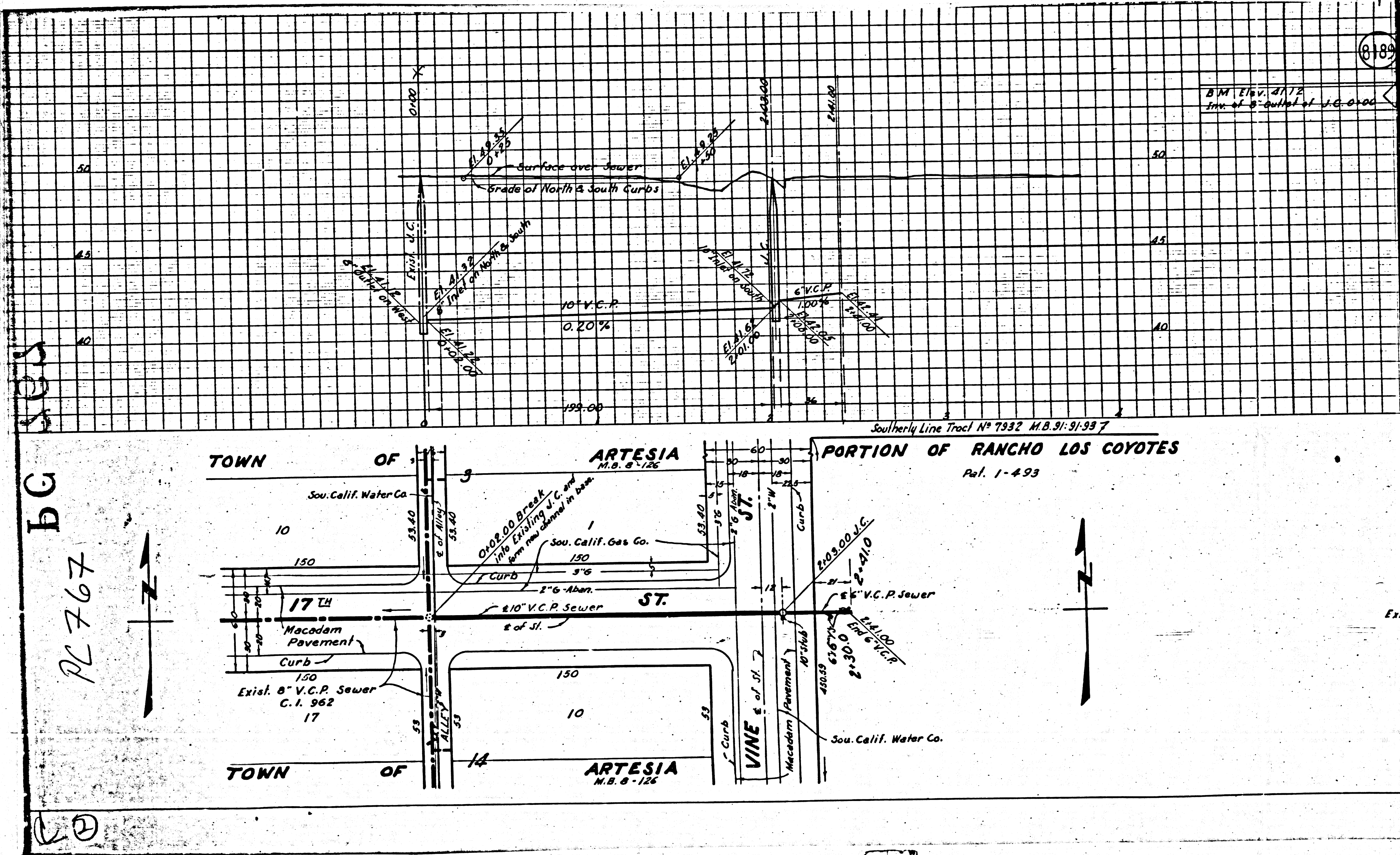
P.C. No 767
INDEX MAP
Scale: 1" = 600'



20



BC
767



189

B.M. Elev. 217.2
Inv. of 5' outlet of V.C.P. 200.00

Southerly Line Trac. N° 7932 M.B. 91-91-93 7

TOWN OF ARTESIA M.B. 8-126
PORTION OF RANCHO LOS COYOTES
Pat. 1-4-93

17th St
Vine St
10' V.C.P. 0.20%
199.00
200.00
Surface over Sewer
Grade of North & South Curbs
10' V.C.P. 0.20%
17th St
Vine St
10' V.C.P. 0.20%
199.00
200.00
Surface over Sewer
Grade of North & South Curbs

TOWN OF ARTESIA M.B. 8-126