

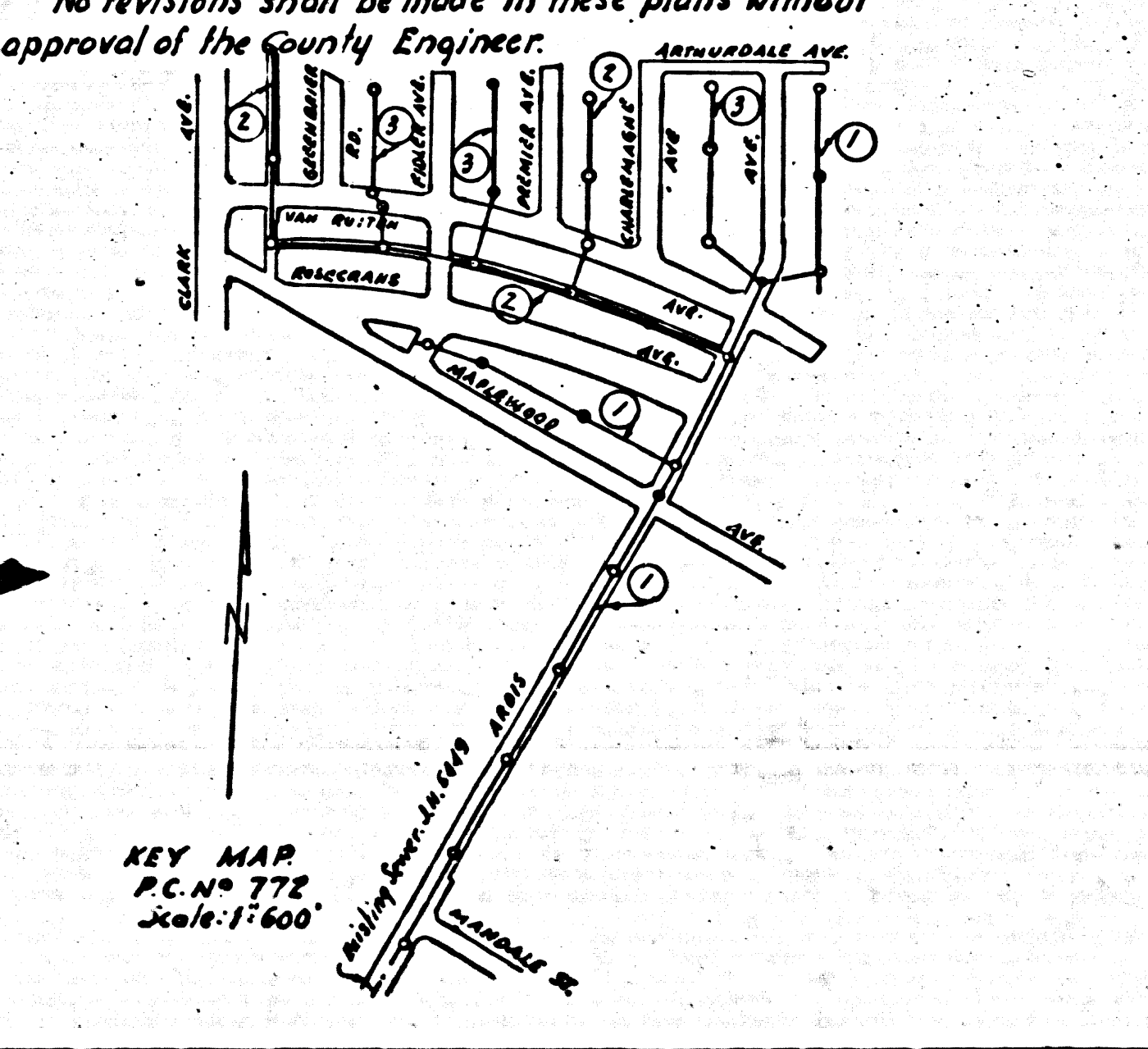
USE STANDARD MANHOLE FRAMES AND COVERS 50/117
 USE STANDARD STRENGTH PIPE
 USE CEMENT MORTAR FOR ALL VITRIFIED CLAY PIPE JOINTS
 RESURFACE TRENCH WITHIN PAVED AREA TO MEET LOS ANGELES COUNTY ROAD DEPT. REQUIREMENTS
 CONSTRUCT HOUSE CONNECTIONS WITH INVERT AT PROPERTY LINE 3 FEET BELOW CURB GRADE EXCEPT AS NOTED
 ENCASE FOUR FEET OF SEWER AT POINTS OF INTERFERENCE WITH POLES 5'-0\"/>

Note: No representative of the County Engineer will survey or lay out any portion of the work.
 The owner or his authorized representative shall furnish the County Engineer with grade sheets and stations of all House Connections and Y Branches and shall provide stakes for them at their proper locations with stationing plainly marked. Any change of location shall be requested in writing by the owner or his representative.

No revisions shall be made in these plans without approval of the County Engineer.

PROFILE ALIGNMENT AND GRADE OF
SANITARY SEWERS
 TO BE CONSTRUCTED IN
ARDIS AVE.
 BETWEEN SOUTHERLY LINE LOT 32 TRACT NO. 13735 AND NORTHERLY LINE LOT 61 TRACT NO. 13103
SANITARY SEWER RIGHT OF WAY
 IN TRACT NO. 13103
PRIVATE CONTRACT NO. 772
 W.S. 33
SHEET 1 OF 3 SHEETS

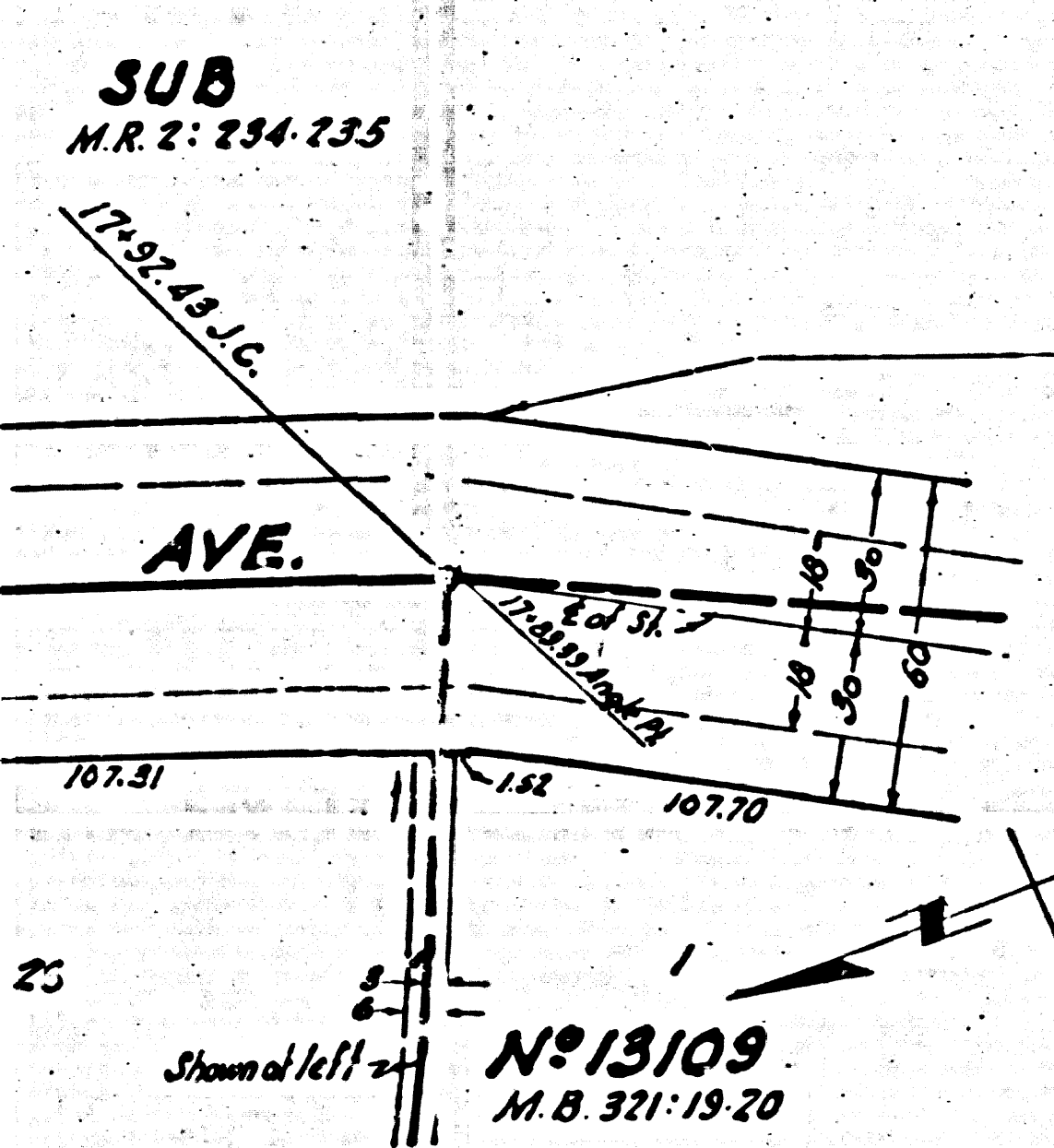
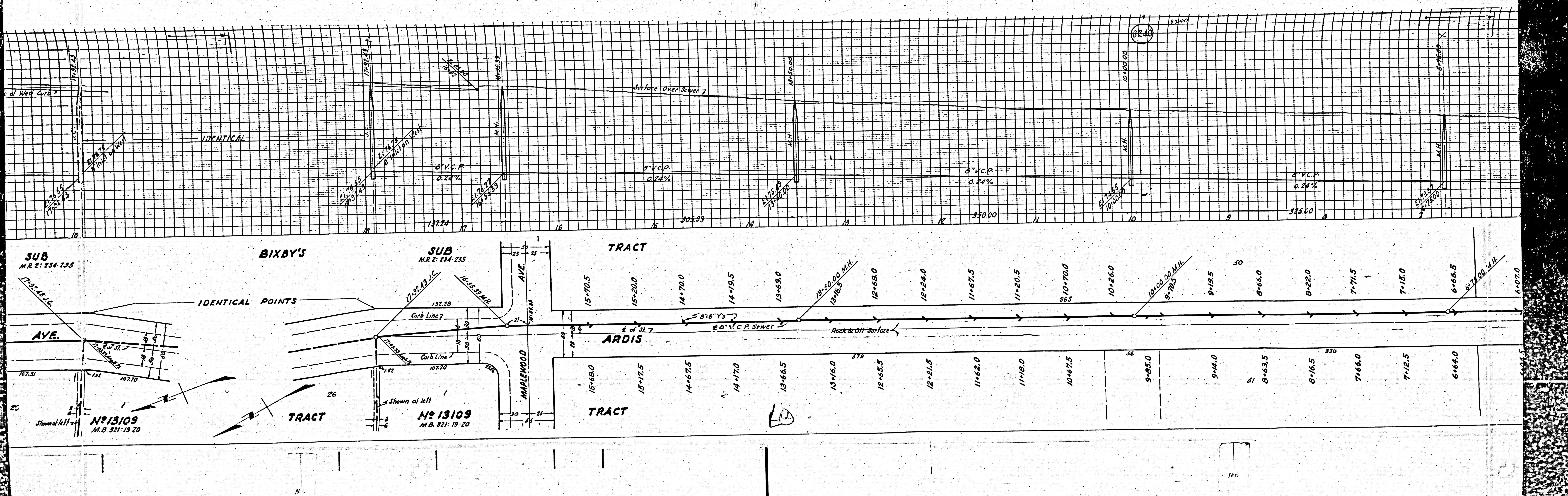
SCALE: HORIZ. 1" = 40'
 VERT. 1" = 4'
 APRIL 1940
 PREPARED IN THE OFFICE OF
 BY *G. Z. West*
 A.E.C. NO. 5707



FOR LEGEND
 SEE PLAN NO. 50-64
 NOTE:
 GRADES TO WHICH THIS IMPROVEMENT IS TO BE CONSTRUCTED ARE SHOWN ON PLANS AND PROFILES.
 GRADE POINTS FOR TOP OF CURB, CENTER LINE OF STREET OR CENTER LINE OF ALLEY ARE SHOWN BY CIRCLES ON PROFILES. AT ALL POINTS BETWEEN DESIGNATED POINTS THE GRADE SHALL BE ESTABLISHED SO AS TO CONFORM TO A STRAIGHT LINE DRAWN BETWEEN SAID DESIGNATED POINTS.
 ELEVATIONS ARE IN FEET ABOVE U.S. DATUM OR MEAN SEA LEVEL.
 THIS DRAWING AND THE DATA HEREON ARE HEREBY MADE A PART OF THE SPECIFICATIONS.
 WORK SHALL BE CONSTRUCTED ACCORDING TO SPECIFICATIONS ON FILE IN THE OFFICE OF THE COUNTY ENGINEER AND SHALL BE PROSECUTED ONLY IN THE PRESENCE OF THE COUNTY ENGINEER.
 BEFORE WORK CAN BE STARTED THE CONTRACTOR MUST OBTAIN A PERMIT TO OCCUPY STREETS FROM THE L.A. COUNTY ROAD DEPT. IN LAMOUNT, AND MAKE ARRANGEMENT WITH THE COUNTY ENGINEER FOR THE PAYMENT LEASES B.L.S. SUFFICIENT TO COVER THE COST OF CONSTRUCTION INSPECTION AND RECEIVED PLANS.

COUNTY OF LOS ANGELES, CALIFORNIA.
 APPROVED *Allegory*
 COUNTY ENGINEER
 APPROVED *C.R. Compton*
 COUNTY ENGINEER
 CHECKED BY *COYNE* JUL 11 1940
 OFFICE OF COUNTY ENGINEER, ROOM 400, 630 S. GATE ST.

BC 1155



BIXBY'S

SUB
M.R. 2: 234-235

TRACT

IDENTICAL POINTS

ARDIS

TRACT

MAPLEWOOD AVE.

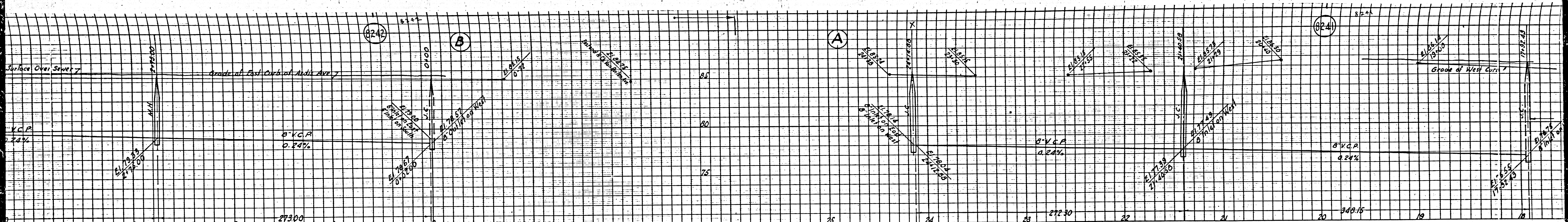
TRACT

N^o 13109
M.B. 321: 19-20

15+68.0	15+70.5	15+70.0	14+70.0	14+19.5	13+68.0	12+68.0	12+24.0	11+67.5	11+20.5	10+70.0	10+26.0	9+19.5	8+66.0	8+22.0	7+71.5	7+15.0	6+66.5	6+07.0
15+68.0	15+70.5	14+67.5	14+17.0	13+66.5	13+16.0	12+65.5	12+21.5	11+62.0	11+18.0	10+67.5	9+65.0	9+14.0	8+63.5	8+16.5	7+66.0	7+12.5	6+64.0	

M.S.

M.S.



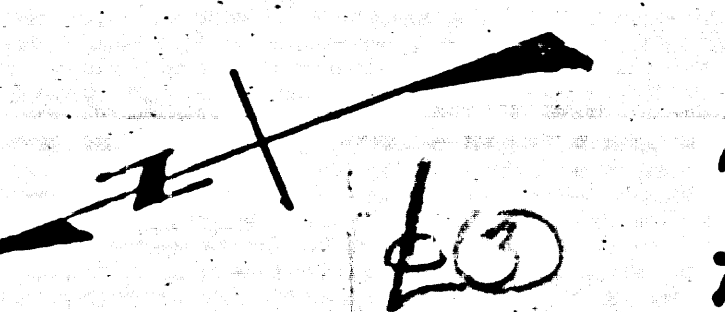
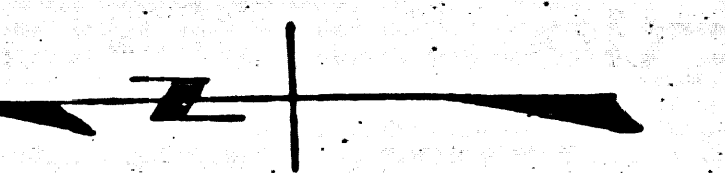
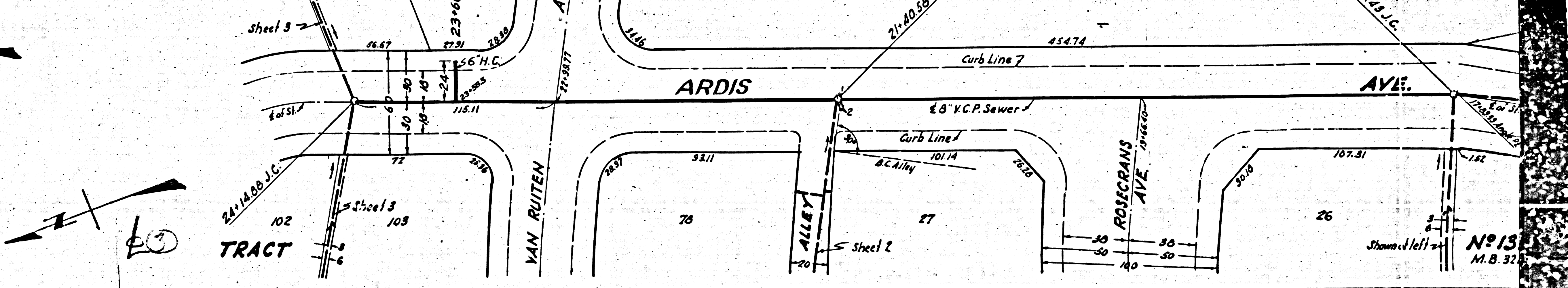
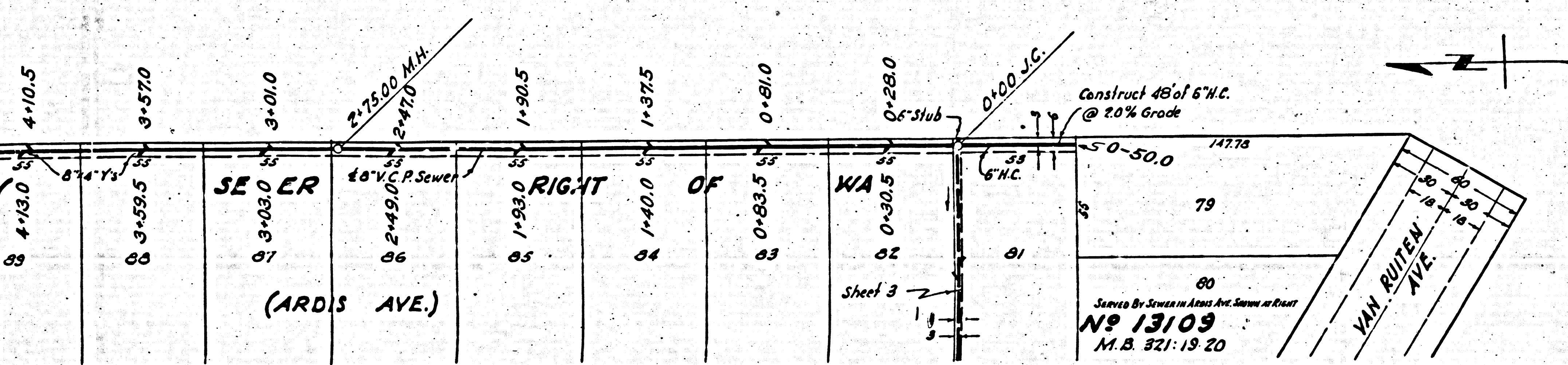
LAND

ASSOCIATION
M.R. 13-32 - M.R. 32-16

TRACT
No 13109
M.B. 321: 19-20

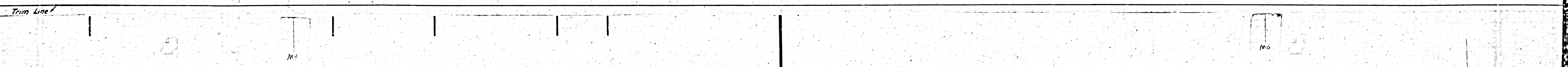
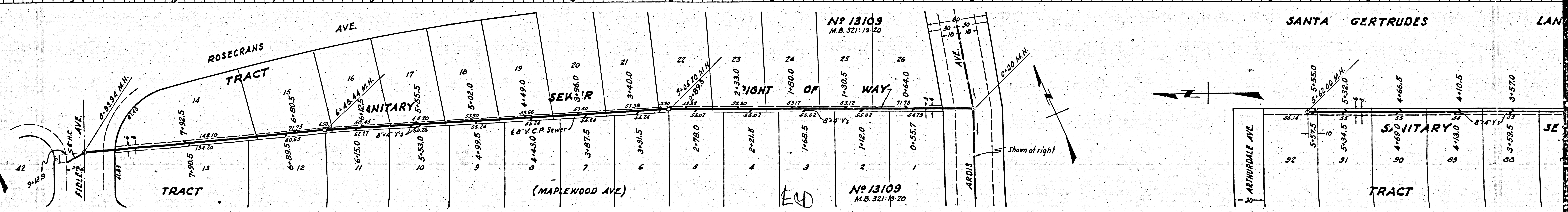
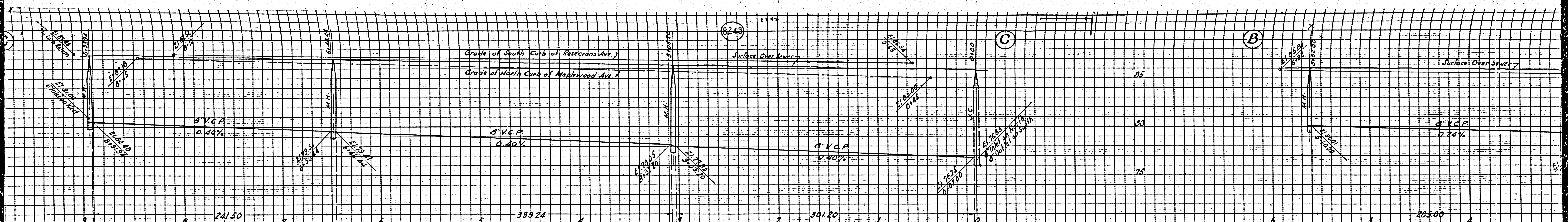
BIXBY'S

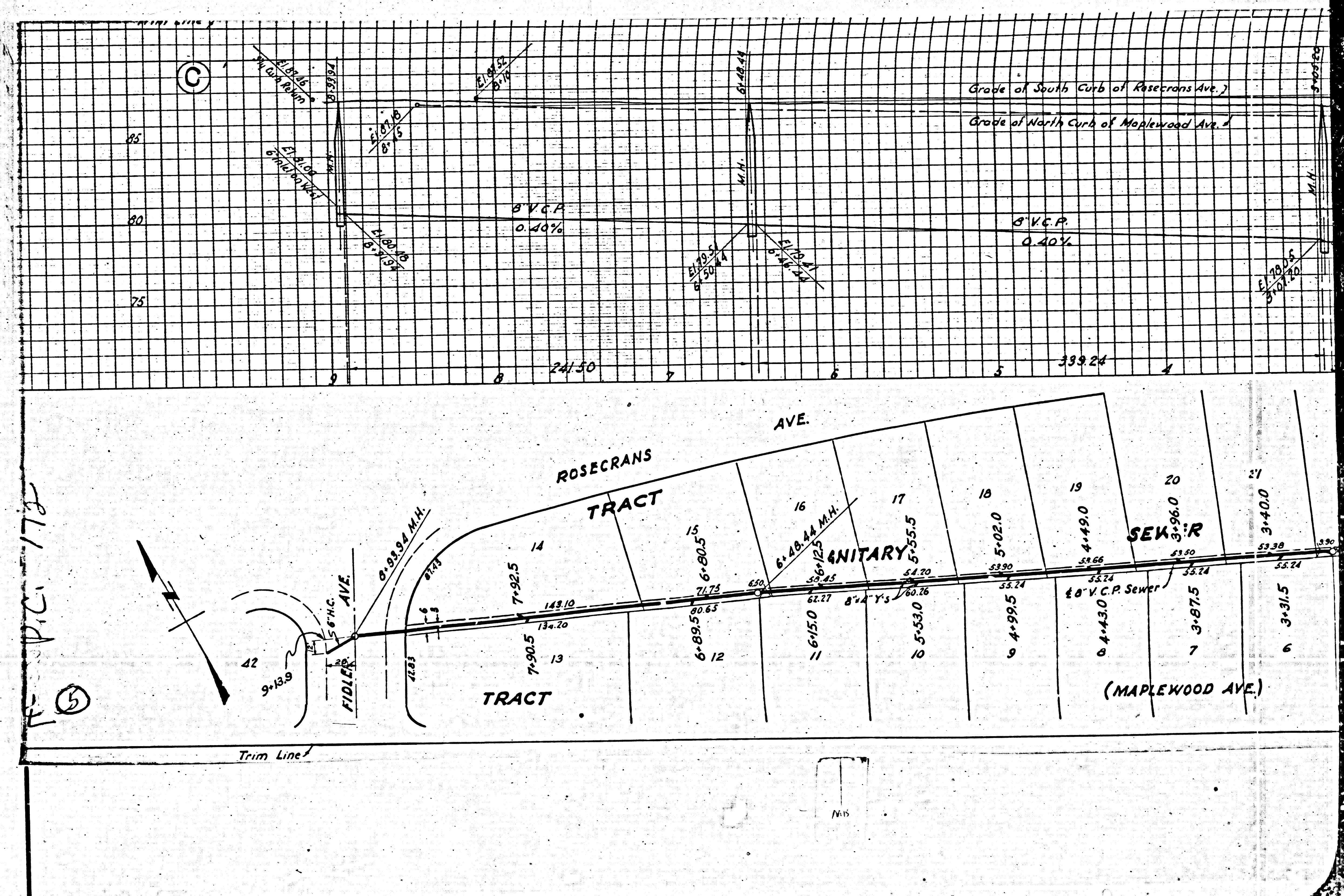
SUB
M.R. 2: 234-235



M₅

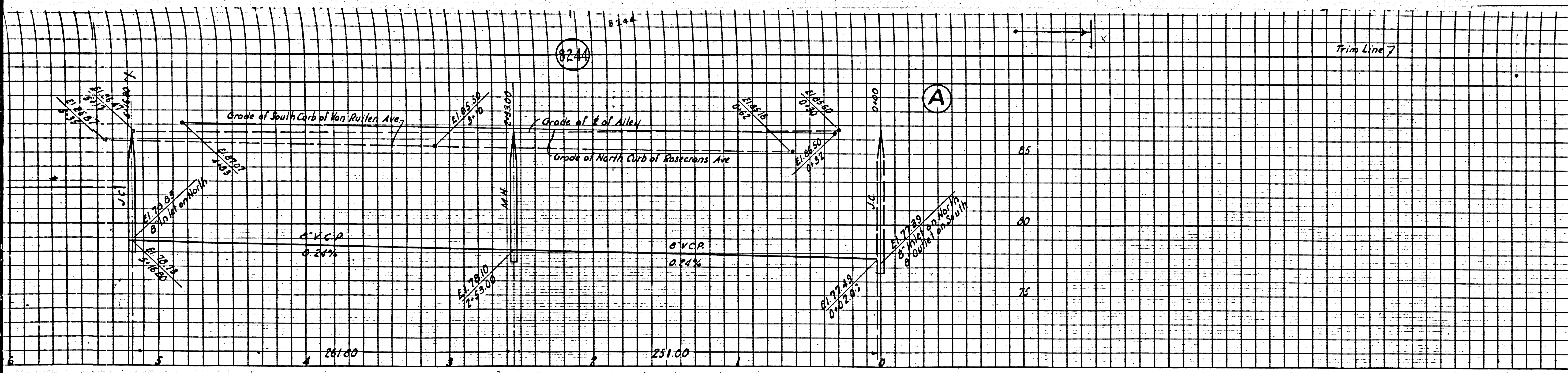
M₆



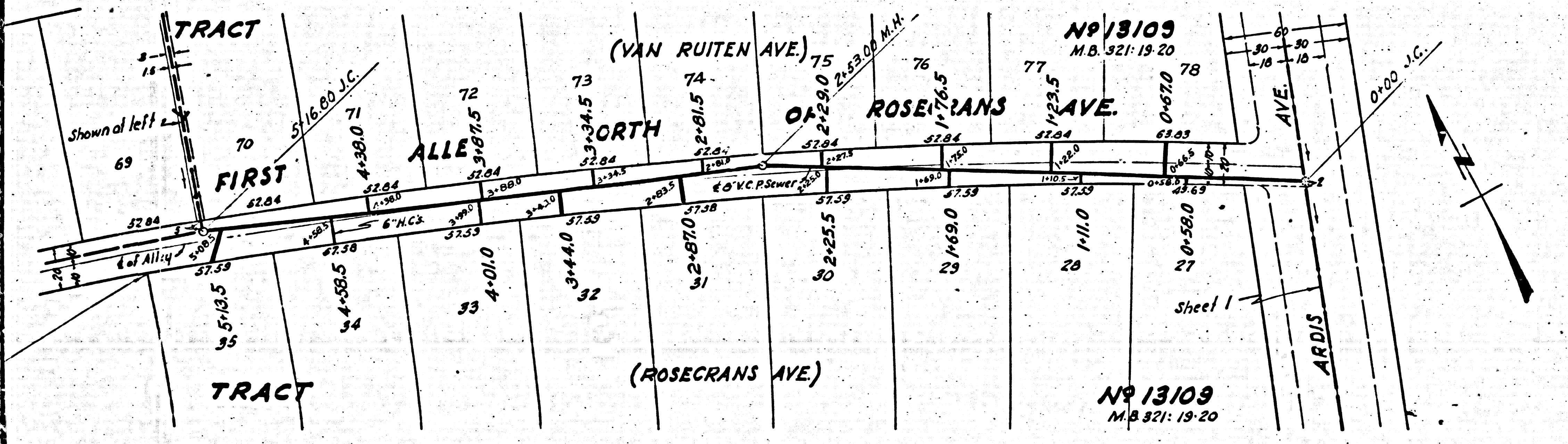


E.P.C. 175

⑤

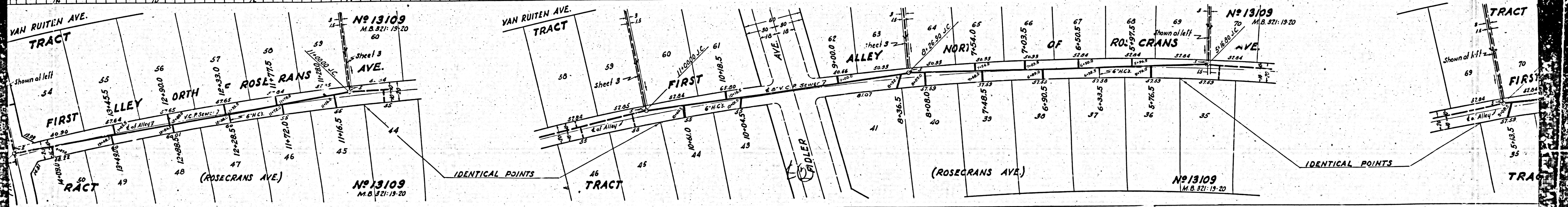
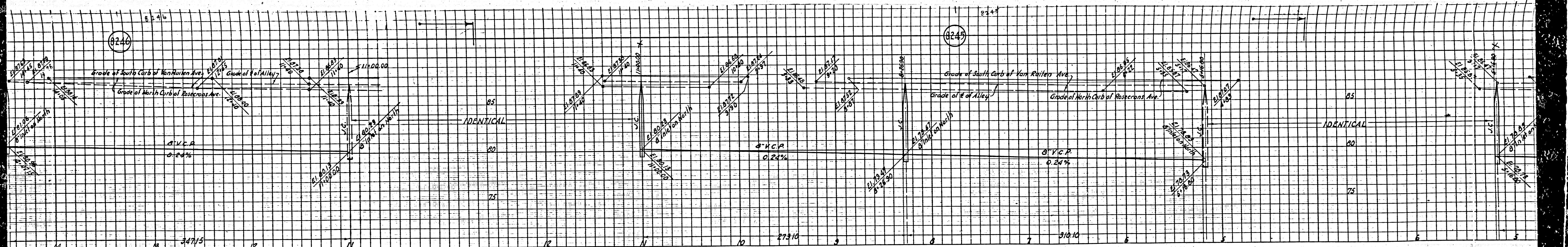


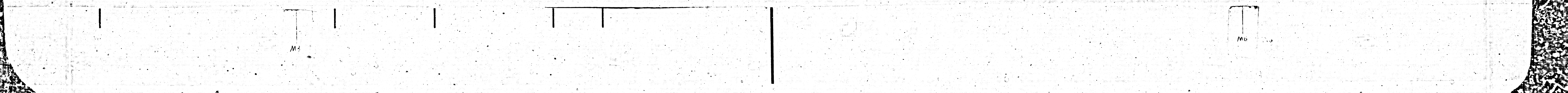
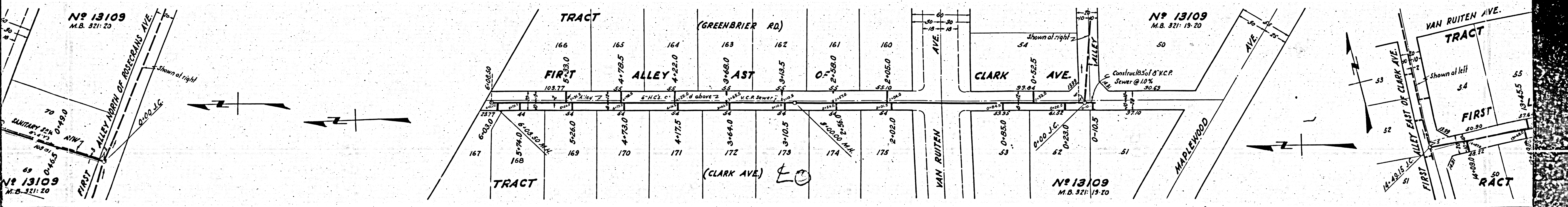
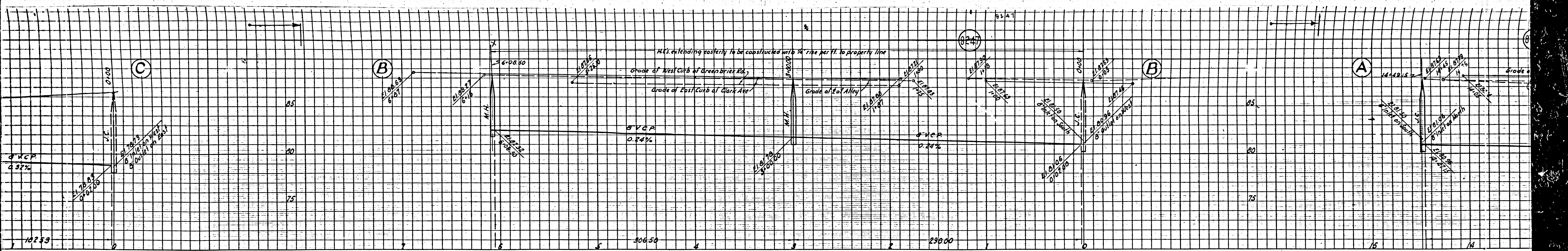
PROFILE ALIGNMENT AND GRADE OF
SANITARY SEWERS
 TO BE CONSTRUCTED IN
FIRST ALLEY NORTH OF ROSECRANS AVE.
 BETWEEN ARDIS AVE. AND FIRST ALLEY EAST OF CLARK AVENUE.
FIRST ALLEY EAST OF CLARK AVE.
 BETWEEN MAPLEWOOD AVE. AND NORTHERLY LINE TR. NO. 13103.
SANITARY SEWER RIGHT OF WAY
 IN TRACT NO. 13103.
 PRIVATE CONTRACT NO. 772
 M.S. 33
SHEET 2 OF 3 SHEETS
 SCALE: VERT. 1" = 4'
 HORIZ. 1" = 40'
 APRIL 1948
 PREPARED IN THE OFFICE OF
 BY: *G. E. Ford*
 REG. C.E. NO. 3147

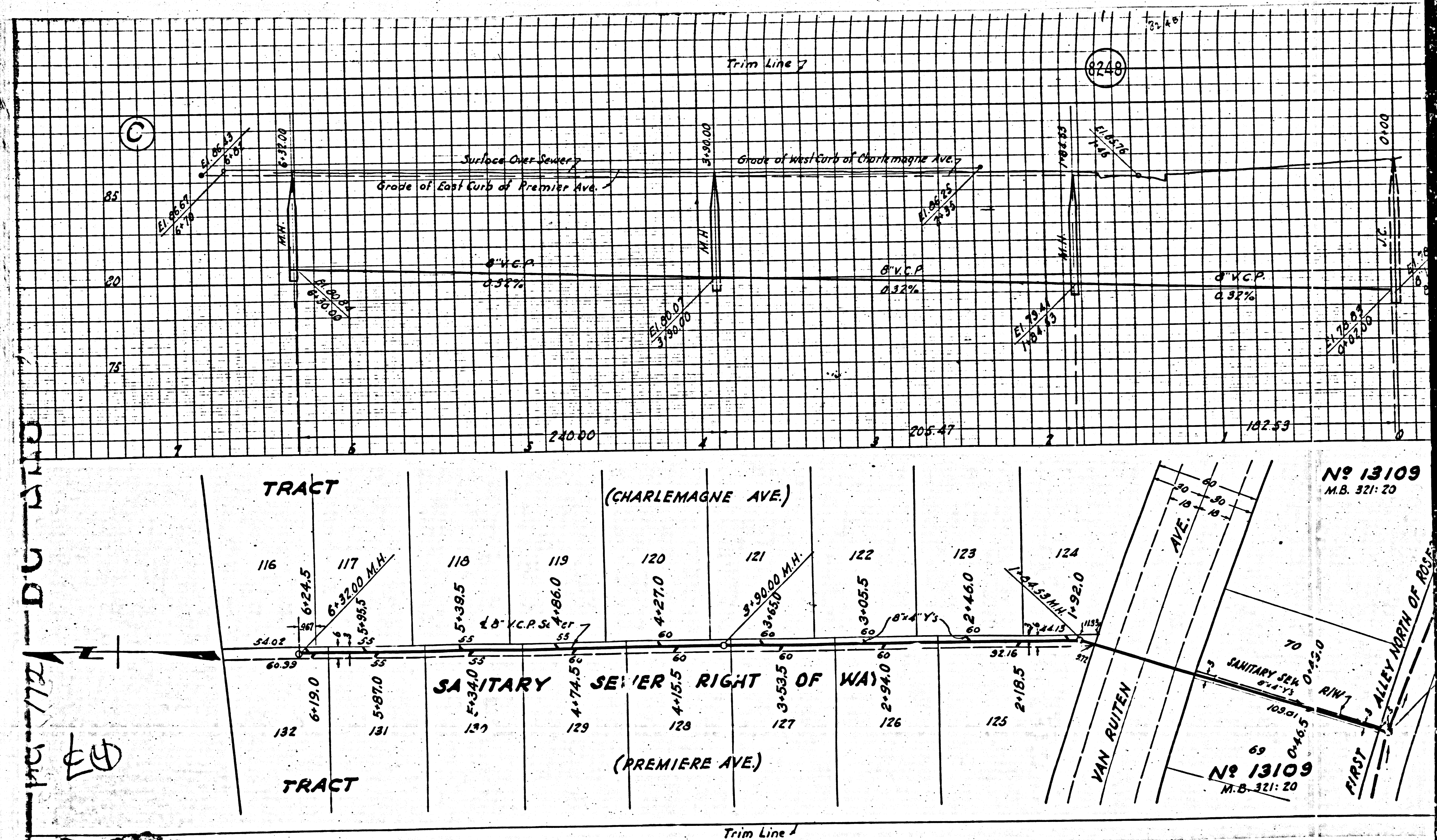


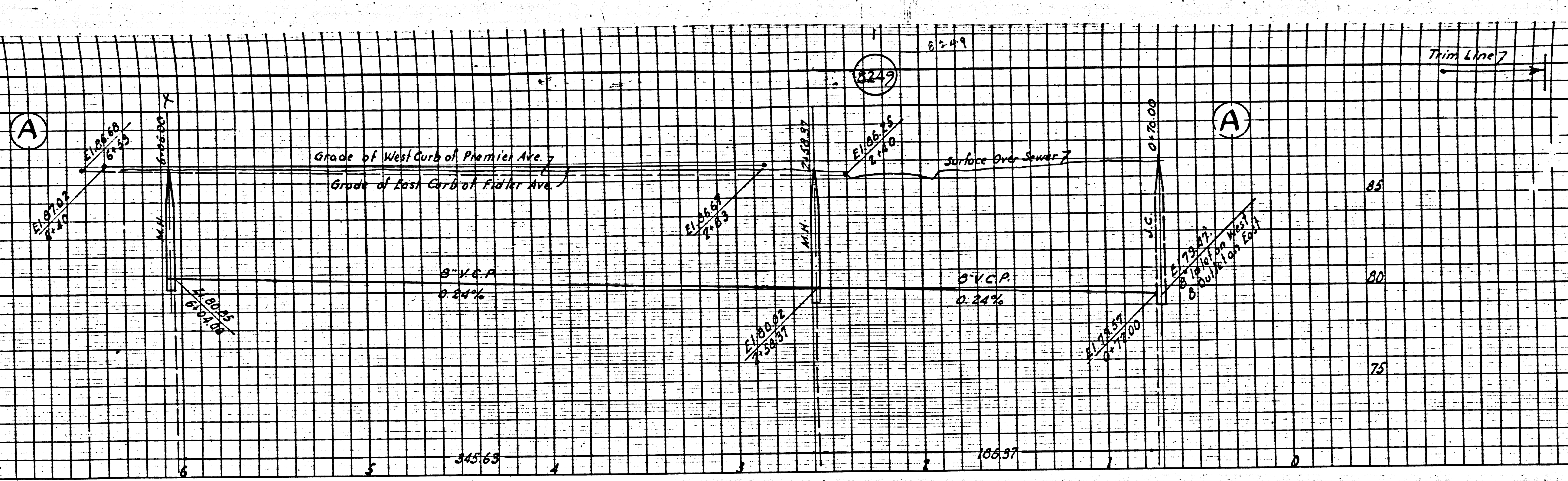
FOR LEGEND
 SEE PLAN NO. 2-64

 FOR CONSTRUCTION NOTES SEE SHEET NO. 1
 COUNTY OF LOS ANGELES, CALIFORNIA
 APPROVED: *A. H. Gregory*
 CHIEF SANITARY COUNTY ENGINEER
 APPROVED: *C. R. Compton*
 ASST. CHIEF ENGINEER OF COUNTY
 SANITATION DIVISION, NO. 2
 CHECKED BY: *E. D. H. [Signature]* July 1, 1948
 OFFICE OF COUNTY ENGINEER - REG. C.E. NO. 4322
 Final Check 13-348 HGT

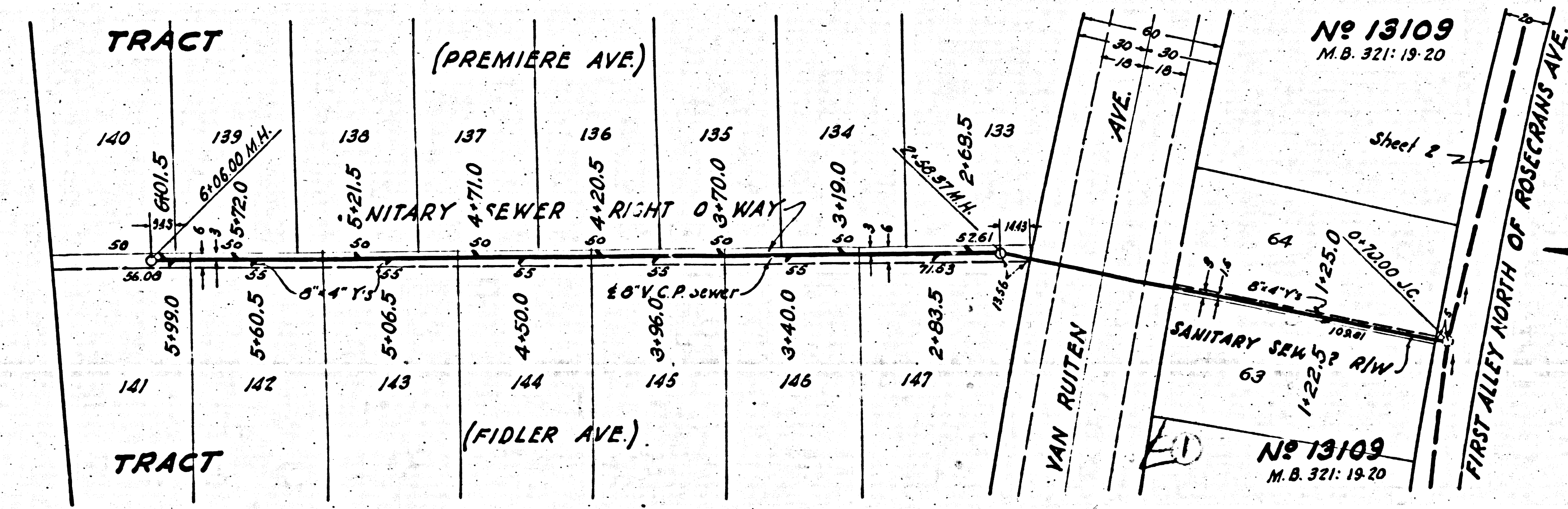








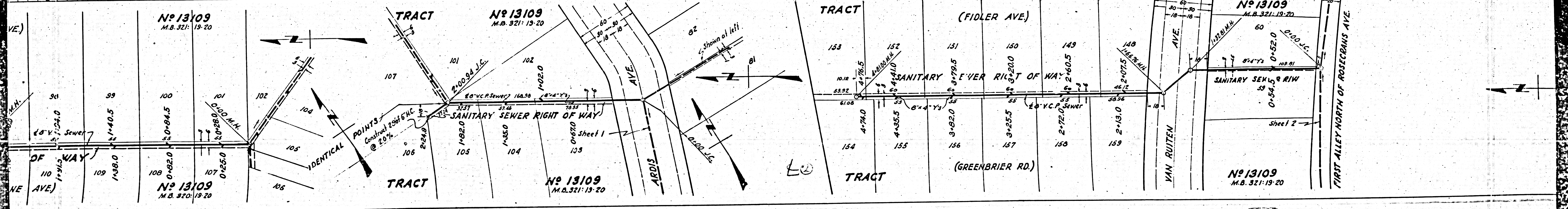
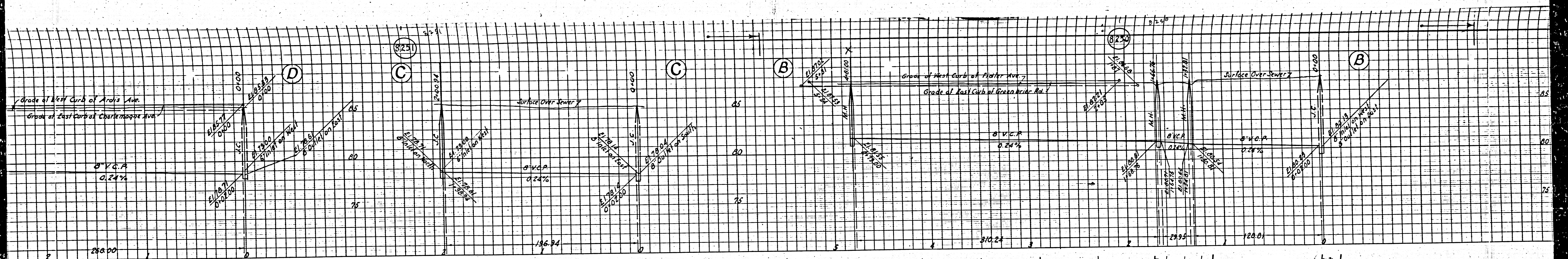
PROFILE ALIGNMENT AND GRADE OF
SANITARY SEWERS
 TO BE CONSTRUCTED IN
SANITARY SEWER RIGHTS OF WAY
 IN TRACT NO. 13109
PRIVATE CONTRACT NO. 712
 W.S. 33 APRIL 1914
 SHEET 2 OF 3 SHEETS
 PREPARED IN THE OFFICE OF
 BY *G. P. Lyon*
REG. C.E. NO. 3167

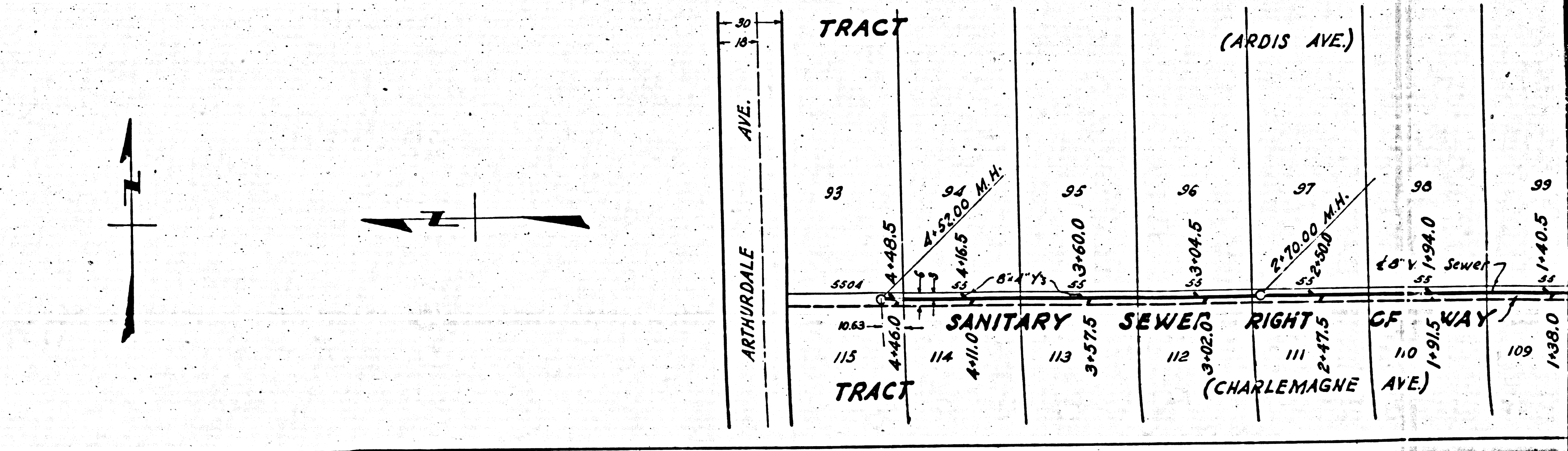
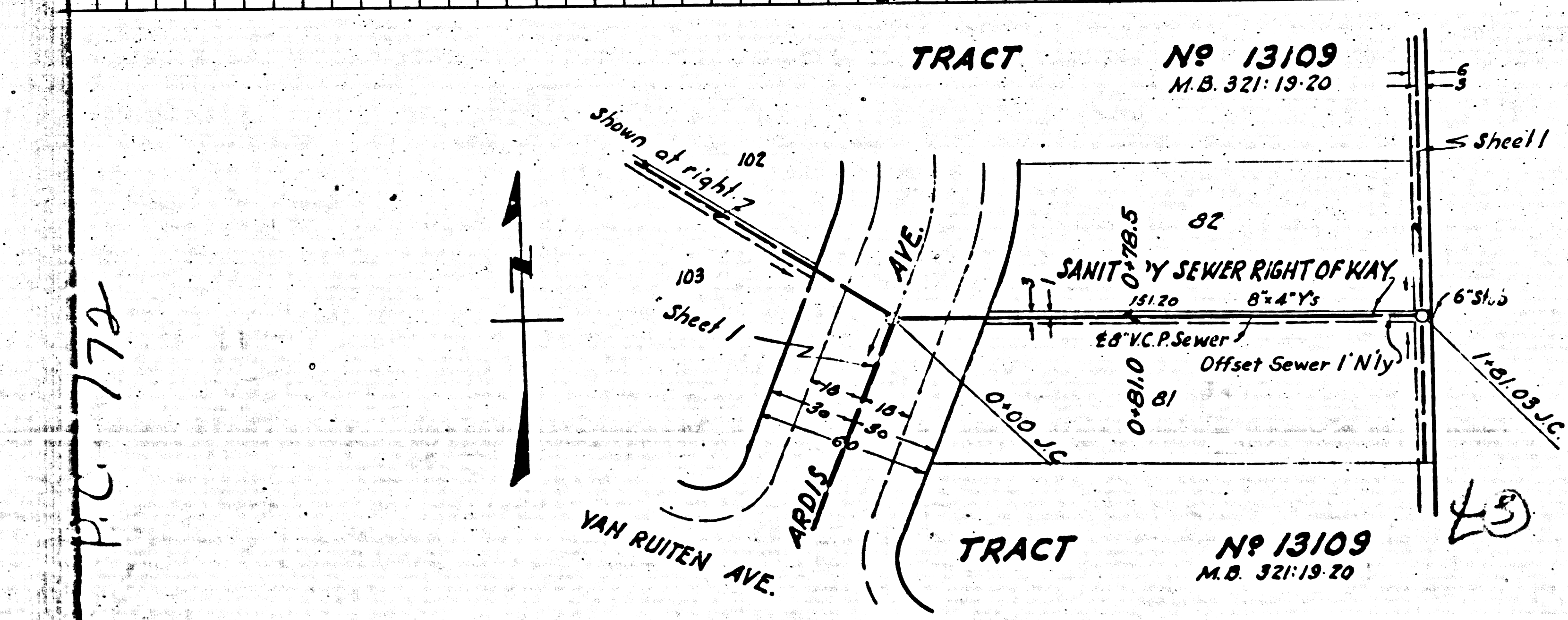
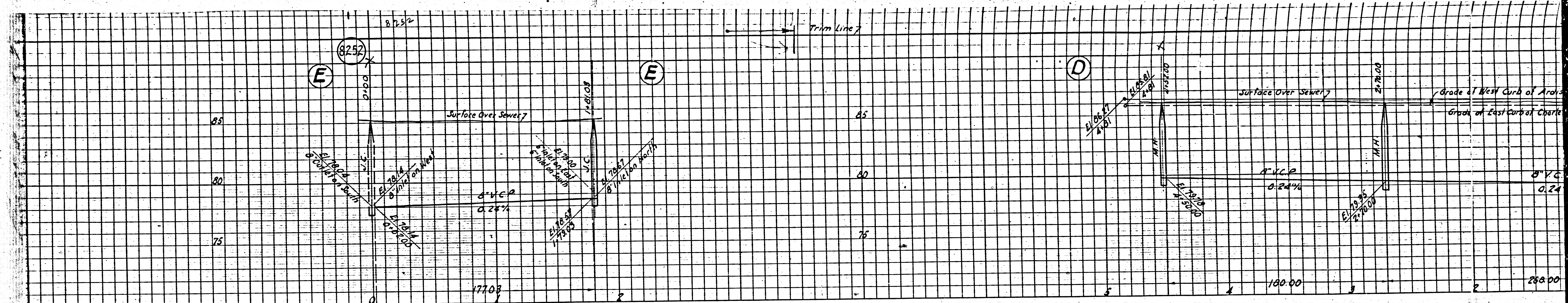


FOR LEGEND
 SEE PLAN NO. 50-64
 FOR CONSTRUCTION NOTES SEE SHEET NO. 1
 COUNTY OF LOS ANGELES, CALIFORNIA
 APPROVED *Allegory*
CHIEF DEPUTY COUNTY ENGINEER
 APPROVED *C. R. Combs*
ASST. CIVIL ENGINEER, BY COURT
 SANITARIUM DISTRICT NO. 2

CHECKED BY *J. P. ...*
OFFICE OF COUNTY ENGINEER DISTRICT NO. 2

Final Check 10-1-28 H.P.T.





HC 772

Trim Line