

DOUBLE SCALE

B.M. - EL 230.148 - SPIKE IN SOUTH CURB 5' E. OF E. END OF C.R. VIA CORONA AND FIRST ALLEY E. OF ATLANTIC BLVD.

USE STANDARD STRENGTH PIPE EXCEPT AS NOTED.
 USE CEMENT MORTAR FOR ALL VITRIFIED CLAY PIPE JOINTS.
 ENCASE FOUR FEET OF SEWER AT POINTS OF INTERFERENCE WITH POLES AS PER S-4-119.

ALL STRUCTURES SHALL BE BRICK SEWER STRUCTURES AS PER PLAN No. S-4-104.
 USE STANDARD MANHOLE FRAMES AND COVERS AS PER PLAN No. S-4-117.
 CONSTRUCT TOPS OF ALL STRUCTURES IN RIGHTS OF WAY 6" ABOVE FIN GRADE.
 RESURFACE ALL TRENCHES WITHIN PAVED AREA TO MEET LOS ANGELES COUNTY ROAD DEPARTMENT REQUIREMENTS.

NO REVISIONS SHALL BE MADE IN THESE PLANS WITHOUT APPROVAL OF THE COUNTY ENGINEER.
 NO REPRESENTATIVE OF THE COUNTY ENGINEER WILL SURVEY OR LAY OUT ANY PORTION OF THE WORK.
 THE OWNER OR HIS AUTHORIZED REPRESENTATIVE SHALL FURNISH THE COUNTY ENGINEER WITH GRADE SHEETS AND STATIONS OF ALL HOUSE CONNECTIONS AND Y-BRANCHES AND SHALL PROVIDE STAKES FOR THEM AT THEIR PROPER LOCATIONS WITH STATIONING PLAINLY MARKED. ANY CHANGE OF LOCATION SHALL BE REQUESTED IN WRITING BY THE OWNER OR HIS REPRESENTATIVE.

PROFILE, ALIGNMENT AND GRADE OF SANITARY SEWERS TO BE CONSTRUCTED IN VIA CORONA AND WOODS AVENUE BETWEEN THE FIRST ALLEY WEST OF ATLANTIC BLVD. AND A POINT 477 FEET WESTERLY THEREOF.

PRIVATE CONTRACT No. 782
 W. S. 36
 ONE SHEET
 APRIL 1948

SCALE: VERT. 1" = 5'
 HORIZ. 1" = 100'

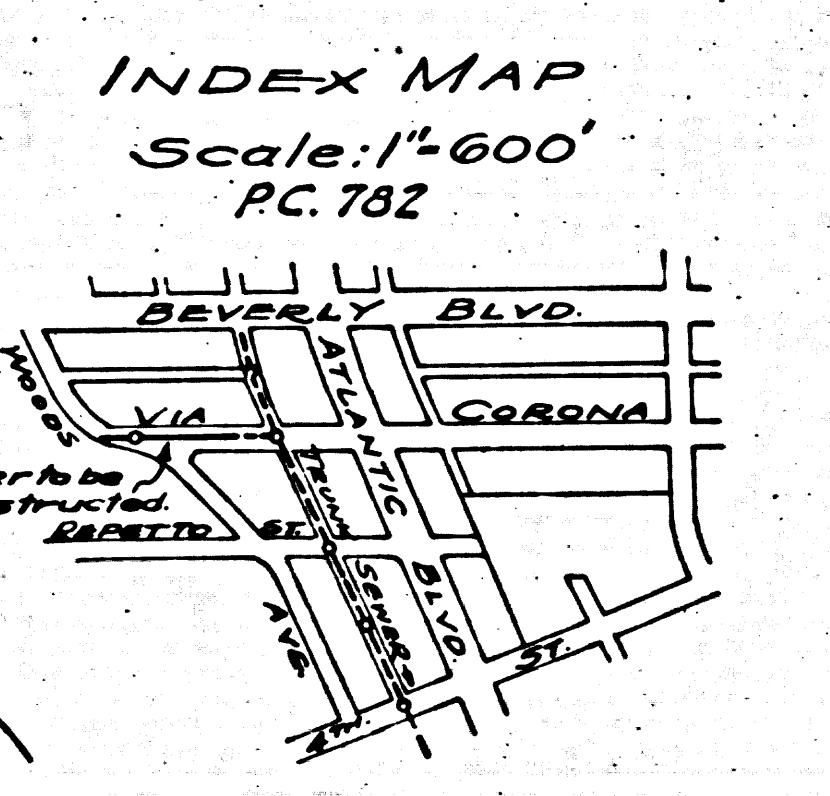
PREPARED IN THE OFFICES OF SOUTHERN CALIFORNIA GAS COMPANY.

BY: *[Signature]* 1948
 REG. C. E. No.

FOR LEGEND
 SEE PLAN No. S-4-64

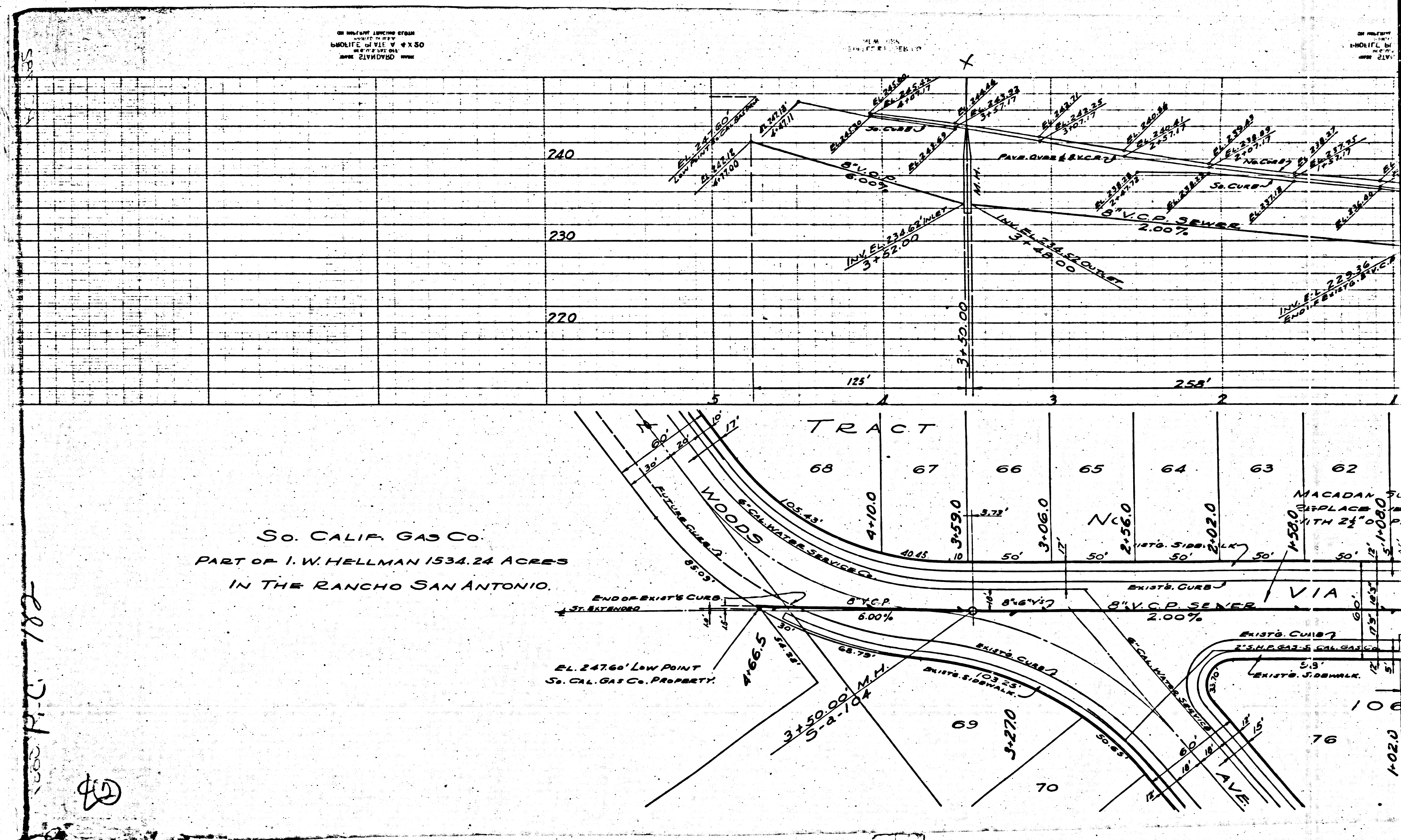
NOTE: GRADES TO WHICH THIS IMPROVEMENT IS TO BE CONSTRUCTED ARE SHOWN ON PLANS AND PROFILE. GRADE POINTS FOR TOP OF CURB, CENTER LINE OF STREET OR CENTER LINE OF ALLEY ARE SHOWN BY CIRCLES ON PROFILES AT ALL POINTS BETWEEN DESIGNATED POINTS. THE GRADE SHALL BE ESTABLISHED SO AS TO CONFORM TO A STRAIGHT LINE BETWEEN DESIGNATED POINTS. ELEVATIONS ARE IN FEET ABOVE U. S. G. DATUM OR MEAN SEA LEVEL. WORK SHALL BE CONSTRUCTED ACCORDING TO SPECIFICATIONS ON FILE IN THE OFFICE OF THE COUNTY ENGINEER AND SHALL BE PROSECUTED ONLY IN THE PRESENCE OF THE COUNTY ENGINEER. COUNTY ENGINEER CAN BE STARTED. THE CONTRACTOR MUST OBTAIN A PERMIT TO EXCAVATE IN THE COUNTY STREET FROM THE COUNTY ROAD DEPT., 111 SOUTH MAIN STREET, AND MAKE A DEPOSIT WITH THE COUNTY ENGINEER, 700 MINION LEAGUE BUILDING, SUFFICIENT TO COVER THE COST OF CONSTRUCTION INSPECTION AND RECORD PLANS. IF WORK IS TO BE DONE IN A STATE HIGHWAY, A PERMIT MUST BE OBTAINED FROM THE STATE OF CALIFORNIA, DIVISION OF HIGHWAYS, 808 STATE BUILDING, AFTER MAKING THE DEPOSIT WITH THE COUNTY ENGINEER.

COUNTY OF LOS ANGELES, CALIFORNIA.



Final C&T.P. 9/21/48

APPROVED: *[Signature]* COUNTY ENGINEER
 APPROVED: *[Signature]* OFFICE ENGINEER
 FOR: CHIEF ENGINEER OF COUNTY SANITATION DISTRICT No. 2
 CHECKED BY: *[Signature]* APRIL 13, 1948
 OFFICE OF COUNTY ENGINEER, REG. C. E. No. 2722



180
 P.C. 182

40

M6