

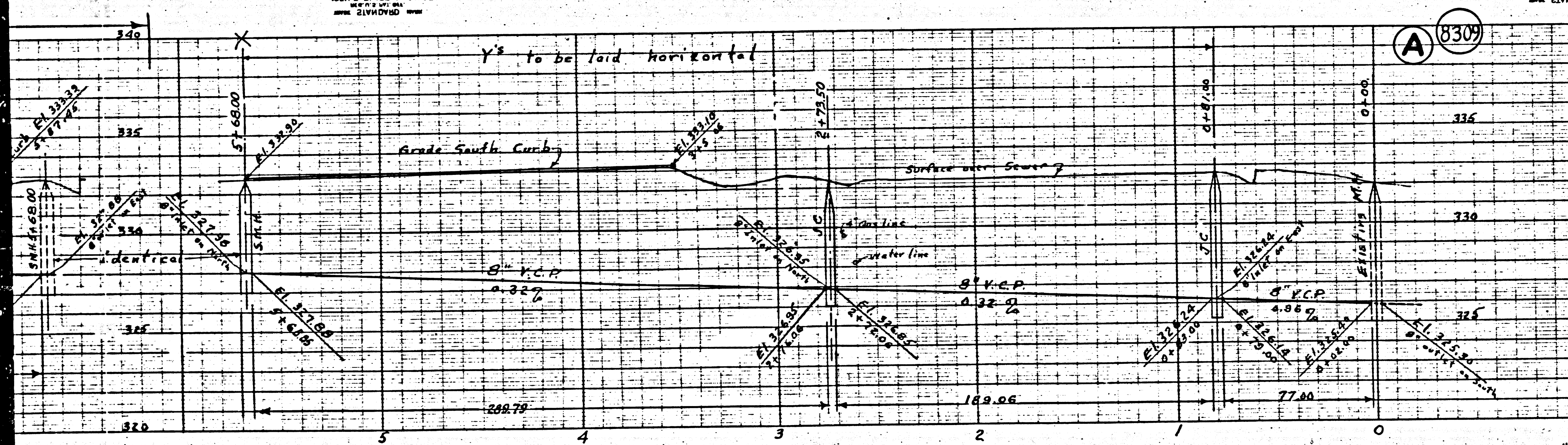
NEW YORK  
KENTZET & CO. INC.

NEW YORK  
KENTZET & CO. INC.

NEW YORK  
KENTZET & CO. INC.

NEW YORK  
KENTZET & CO. INC.

NEW YORK  
KENTZET & CO. INC.



**NOTE**

- USE STANDARD MANHOLE FRAME AND COVER, S-A-117.
- USE STANDARD STRENGTH PIPE.
- USE CEMENT MORTAR FOR ALL VITRIFIED CLAY PIPE JOINTS.
- RESURFACE ALL TRENCH WITHIN PAVED AREA TO MEET LOS ANGELES COUNTY ROAD DEPARTMENT REQUIREMENTS.
- CONSTRUCT HOUSE CONNECTIONS WITH INVERT AT ELEVATION LINE 5 FEET BELOW CURB GRADE (EXCEPT AS NOTED).
- ENCASE 4 FEET OF SEWER AT POINTS OF INTERFERENCE WITH POLES AS PER S-A-119.
- ALL STRUCTURES SHALL BE BRICK STRUCTURES, S-A-104.
- BEFORE TRENCHING CHECK WATER LINES WITH MARTIN & GOOD WATER CO., TEMPLE CITY, CALIF.

NO REPRESENTATIVE OF THE COUNTY ENGINEER WILL SURVEY OR LAY OUT ANY PORTION OF THE WORK. THE OWNER OR HIS AUTHORIZED REPRESENTATIVE SHALL FURNISH THE COUNTY ENGINEER WITH GOOD SHEETS AND STATIONS OF ALL HOUSE CONNECTIONS AND Y BRANCHES AND SHALL PROVIDE SIGNALS FOR THEM AT THEIR PROPER LOCATIONS WITH STATIONING PLAINLY MARKED. ANY CHANGE OF LOCATION SHALL BE REQUESTED IN WRITING BY THE OWNER OR HIS REPRESENTATIVE. NO REVISIONS SHALL BE MADE IN THESE PLANS WITHOUT APPROVAL OF THE COUNTY ENGINEER.

R.M. Load of Tack in curb 45' W. of end of curb returns N.W. corner of Intersection of SUNSET BLVD. & LOWER ARUSA ROAD  
L.Q. 400-2 Elev. 315.14

PROFILE, ALIGNMENT AND GRADE OF  
**SANITARY SEWERS**  
TO BE CONSTRUCTED IN  
**CLOVERLY AVENUE**  
BETWEEN PENTLAND ST. AND BLACKLEY ST.  
**SANITARY SEWER RIGHT OF WAY**  
IN TRACT NO. 13620, M.B. 274-15, 16

W.S. 44

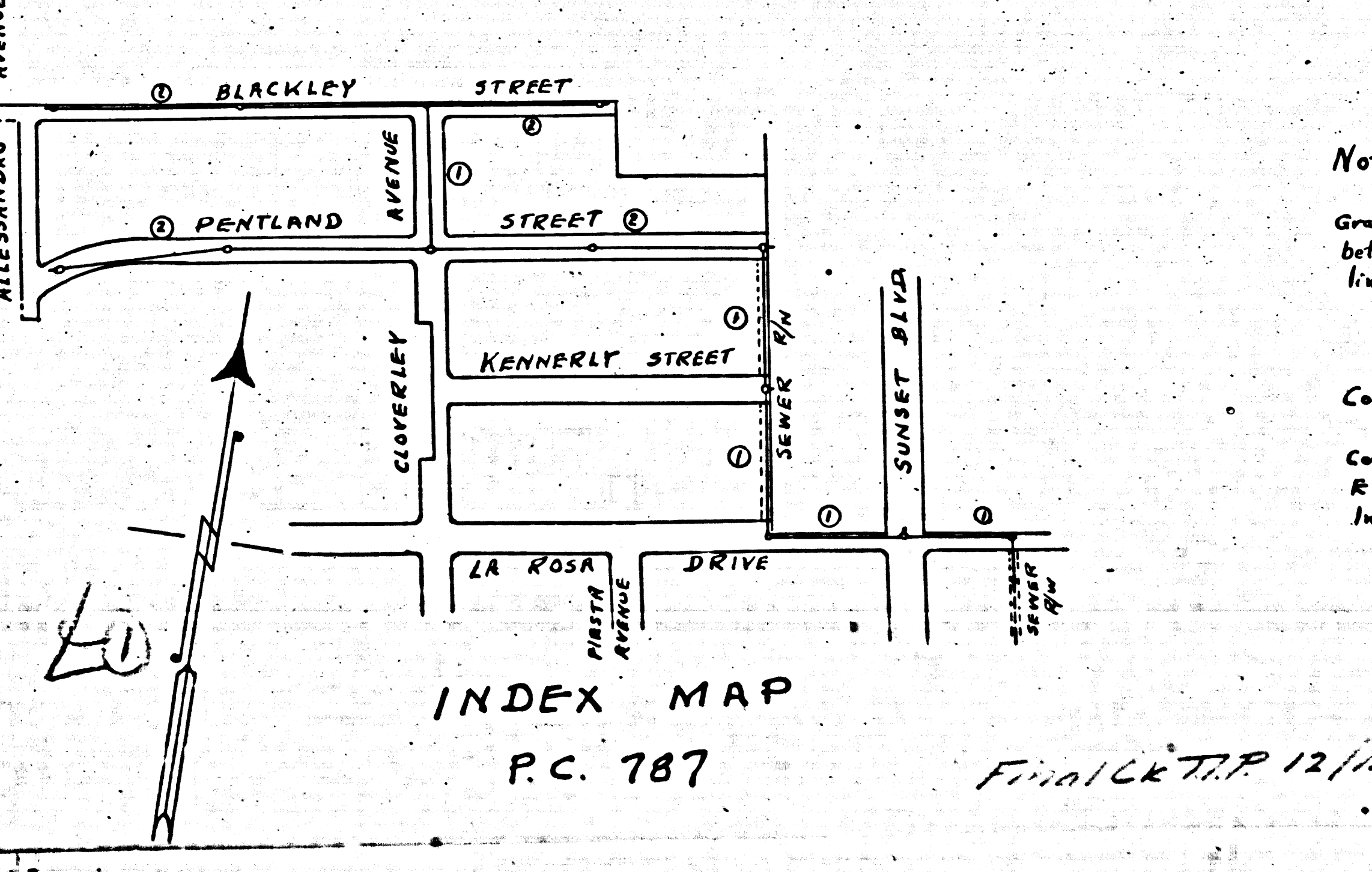
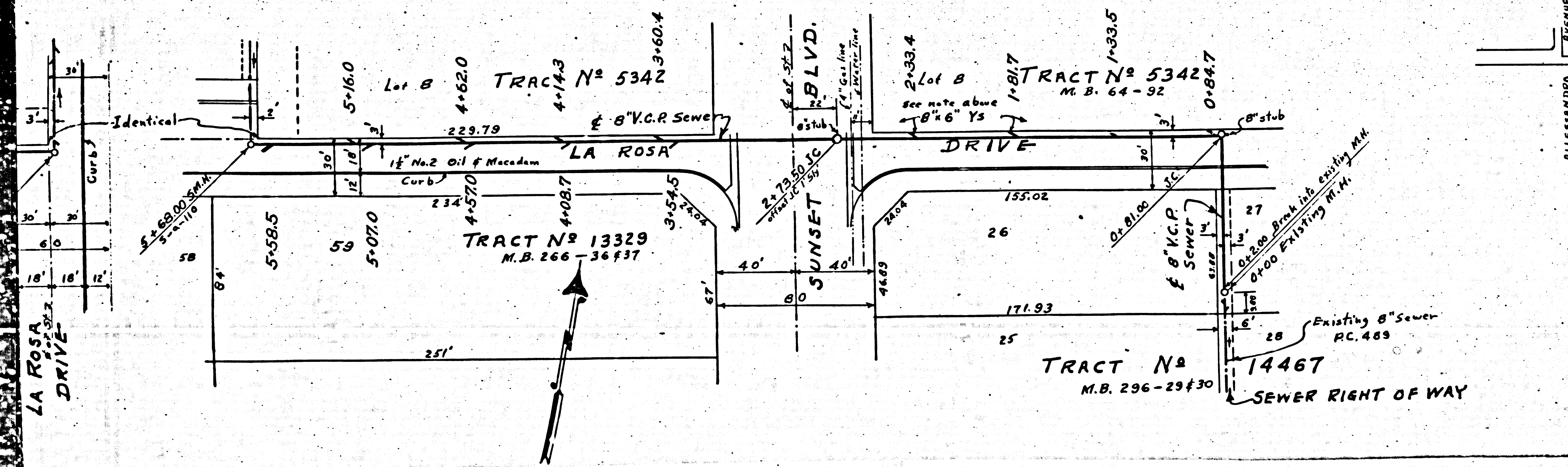
SHEET 1 OF 2 SHEETS

PRIVATE CONTRACT NO. 787

Scale Vert. 1" = 4'  
Horiz. 1" = 40'

JUNE 1948

PREPARED IN THE OFFICES OF  
**MACKINTOSH & MACKINTOSH**  
By *Albyn Mackintosh*  
C.E. No. 5583



NOTE:—  
Grades to which this improvement is to be constructed are shown on plans and profile. Grade points for top of curb, center line of street or alley are shown on profiles. At all points between designated points the sewer grade shall be established so as to conform to a straight line between designated points.  
Elevations are in feet above U.S.G.S. datum as determined by L.A.C. Highway Dept. Bench Mark. This drawing and the data hereon are hereby made a part of the specifications. Work shall be constructed according to specifications on file in the office of the County Engineer and shall be prosecuted only in the presence of the County Engineer. Before work can be started, the contractor must obtain a permit to excavate in County streets from the L.A. County Road Dept., and make a deposit with the County Engineer, 700 Fashion League Building, sufficient to cover the cost of construction inspection and record plans.

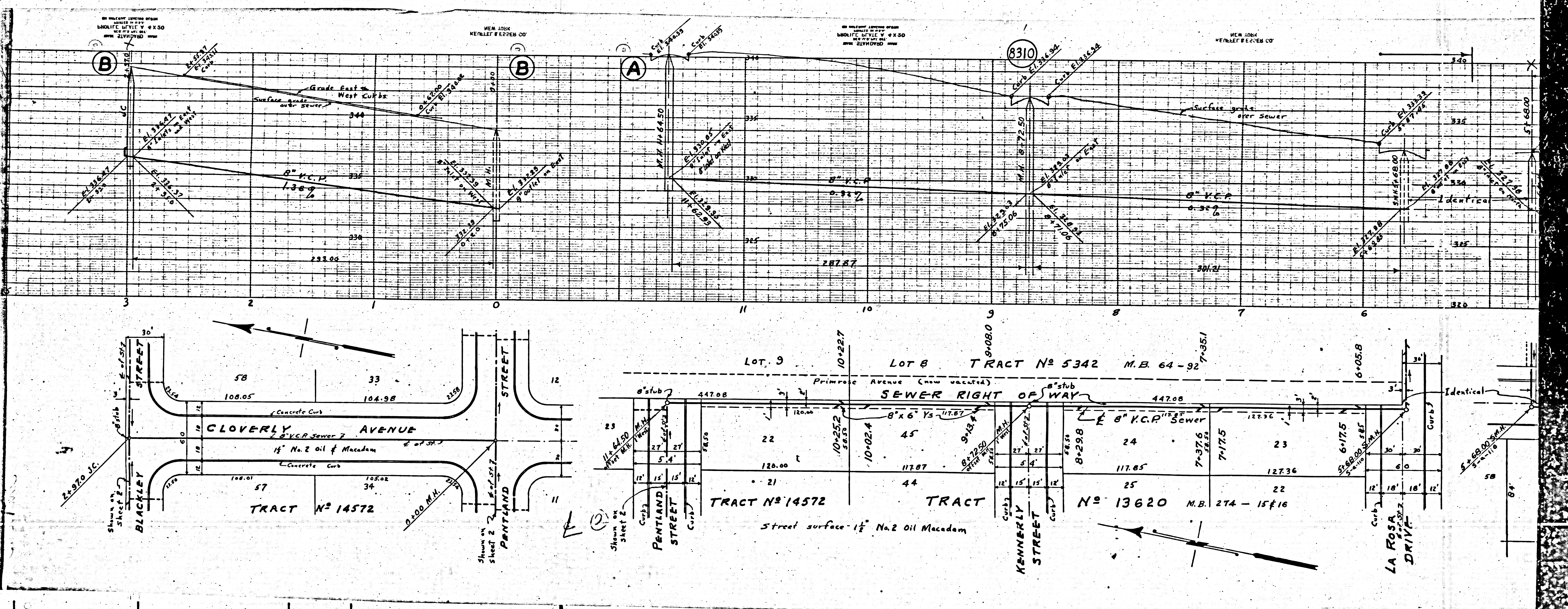
COUNTY OF LOS ANGELES, CALIFORNIA

APPROVED *[Signature]*  
ACTING COUNTY ENGINEER OF COUNTY  
SANITARIUM DISTRICT NO. 12

CHECKED BY *[Signature]* JUN 22 1948  
OFFICE OF COUNTY ENGINEER, REC. OF M-201

Final CK TRP 12/12/48







NEW YORK  
KIMBLE & BISHOP CO.

NEW YORK  
KIMBLE & BISHOP CO.

NEW YORK  
KIMBLE & BISHOP CO.

NEW YORK  
KIMBLE & BISHOP CO.

8312

8310

8308

8306

Profile, Alignment and Grade of  
Sanitary Sewer  
to be constructed in  
Blackley Street  
and  
Pentland Street  
Between Alessandro Ave. & Sunset Blvd

Scale V.H.P. 1" = 4'  
HORIZ. 1" = 40'

PREPARED IN THE OFFICES OF  
MACKINTOSH & MACKINTOSH  
BY *Rebyn Mackintosh*  
REG. C.E. No. 5589

PRIVATE CONTRACT NO. 787

JULY 1948

See SHEET 1 FOR NOTES & INDEX MAP

REVISED: OCT. 6<sup>th</sup> 1948

REVISION CHECKED: *J. J. ...*  
OFFICE OF COUNTY ENGINEER, REG. C.E. No. 5512

COUNTY OF LOS ANGELES, CALIFORNIA

APPROVED: *[Signature]*

APPROVED: *[Signature]*  
ACTING CHIEF ENGINEER OF COUNTY  
SANITATION DISTRICT No. 6

CHECKED BY: *J. J. ...* July 20, 1948  
OFFICE OF COUNTY ENGINEER, REG. C.E. No. 5512

No. 5342  
M.B. 64.92

Final C.T.I.P. 12/4/48

