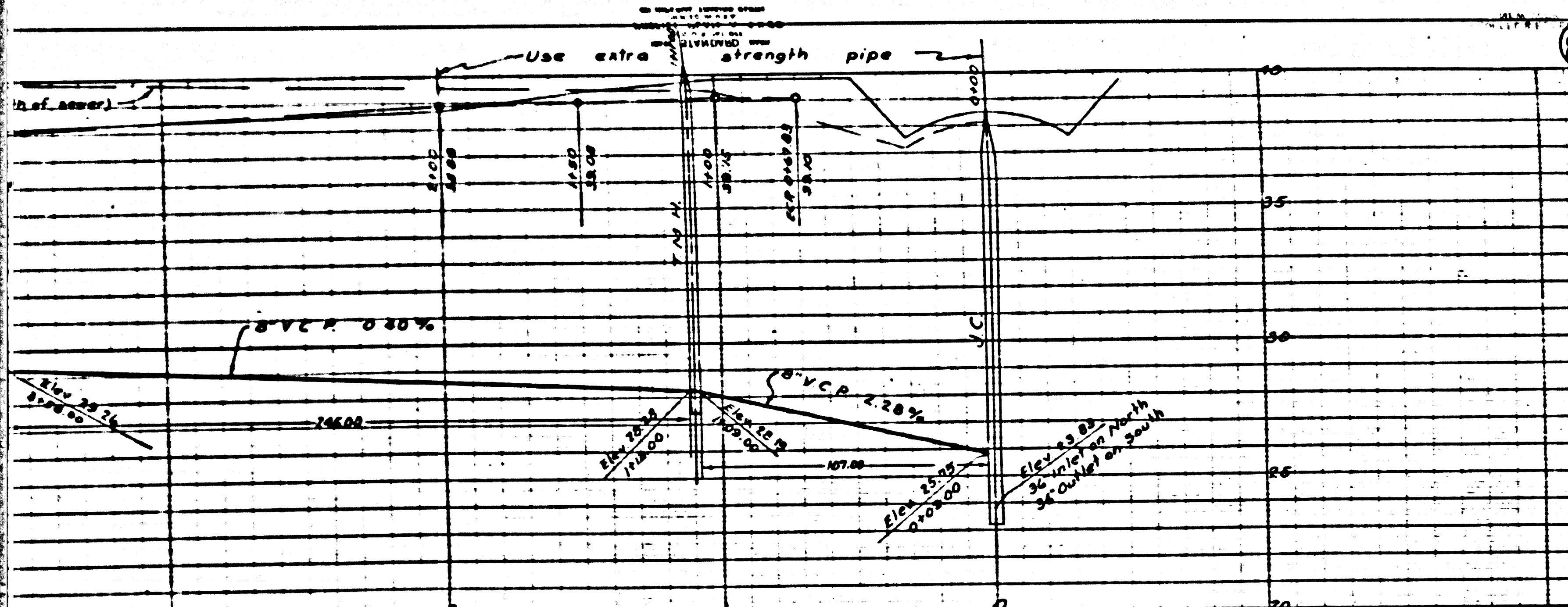


(8235)



Note:

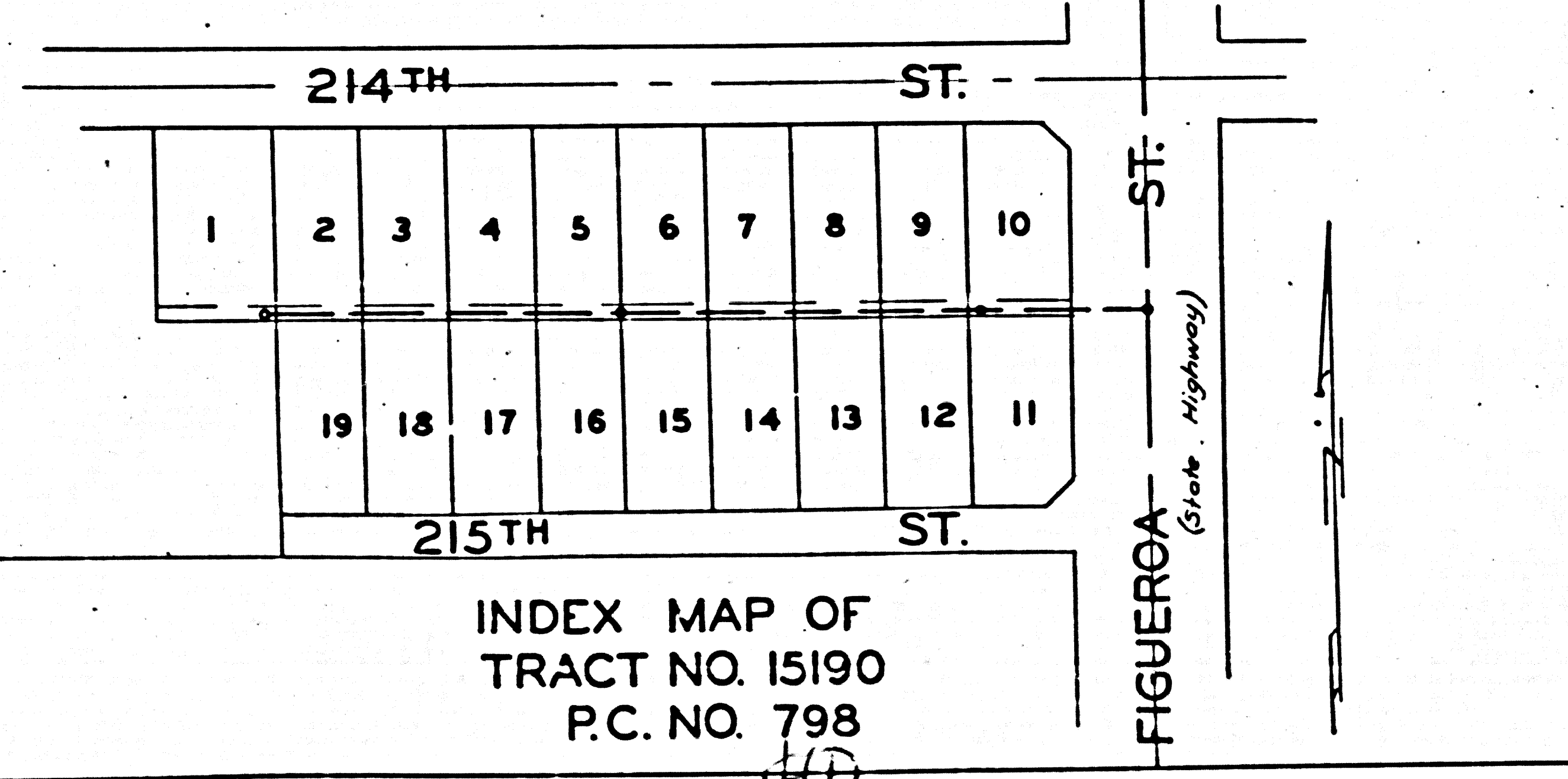
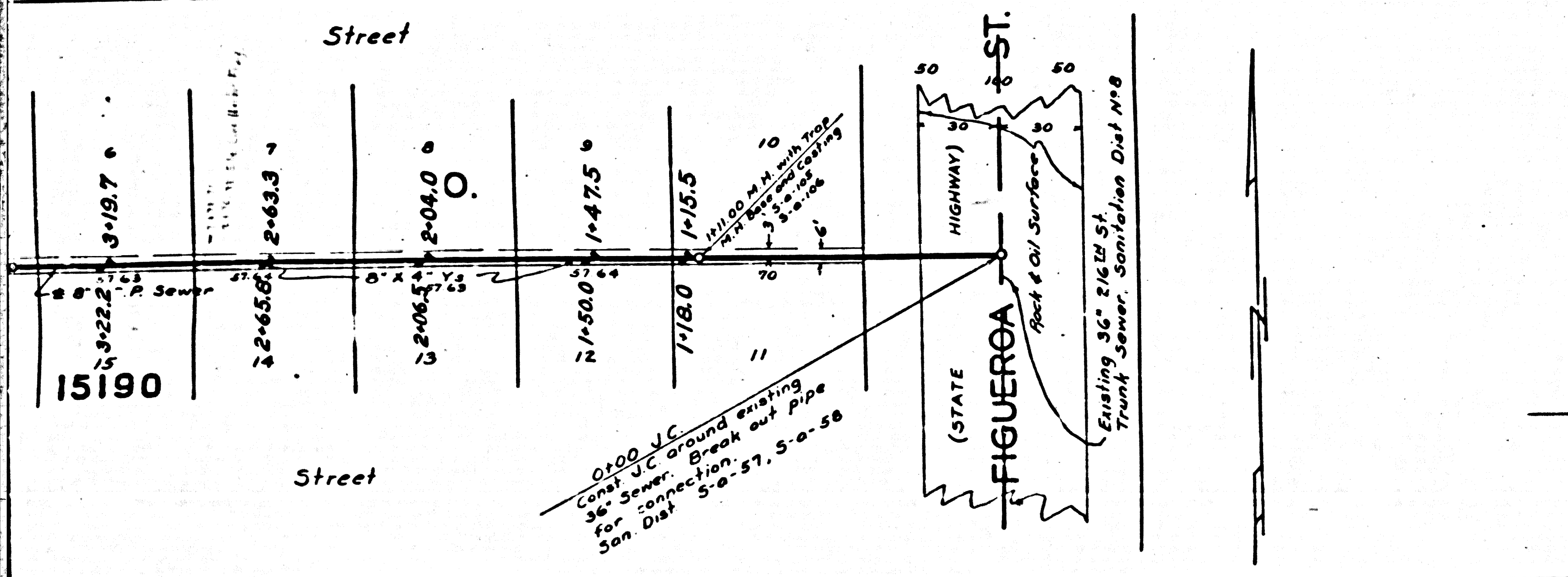
1. Use standard manhole frames and covers S-a-117
2. Use standard strength pipe, except as noted
3. Use cement mortar for all vitrified clay pipe joints
4. Resurface all trench within paved areas to meet California State Highway Dept. requirements
5. All structures shall be brick sewer structures S-a-108, except as noted
6. Tops of manholes shall be 6" above surface of finish grade in Sewer Right of Way

Note: Sanitation District must be notified before work can be started.

Note: No representative of the County Engineer will survey or lay out any portion of the work. The owner or his authorized representative shall furnish the County Engineer with grade sheets and stations of all house connections and Y branches and shall provide stakes for them at their proper locations with arborvitae plants marked. Any change of location shall be requested in writing by the owner or his representative. No revisions will be made in these plans without approval of the County Engineer.

PROFILE ALIGNMENT AND GRADE OF
SANITARY SEWER
 TO BE CONSTRUCTED IN
SEWER R/W IN TRACT NO 15190
 FROM FIGUEROA ST. WESTERLY 591'

PRIVATE CONTRACT NO. 798
 W.S. 28
 SHEET 1 OF 1 SHEET



Note:

1. Grades to which this improvement is to be constructed are shown on plan and profile.
2. Grade points for top of curb, center line of street, or center line of alley are shown by circles on profile. At all points between designated points the grade shall be established as to conform to a straight line drawn between said designated points.
3. Elevations are in feet above U.S.G.S. datum or mean sea level.
4. This drawing and the data hereon are hereby made a part of the specifications.
5. Work shall be constructed according to specifications on file in the office of the County Engineer and shall be prosecuted only in the presence of the County Engineer.
6. Before work can be started the Contractor must obtain a permit to excavate in County Streets from the L. A. Co. Rd. Dept., 311 S. Main St., and make a deposit with the County Engineer, 700 Fashion League Bldg., sufficient to cover the cost of inspection and record plans.
7. If work is to be done in a State Highway a permit must be obtained from the State of California Division of Highways, 808 State Bldg., after making the deposit with the County Engineer.

County of Los Angeles

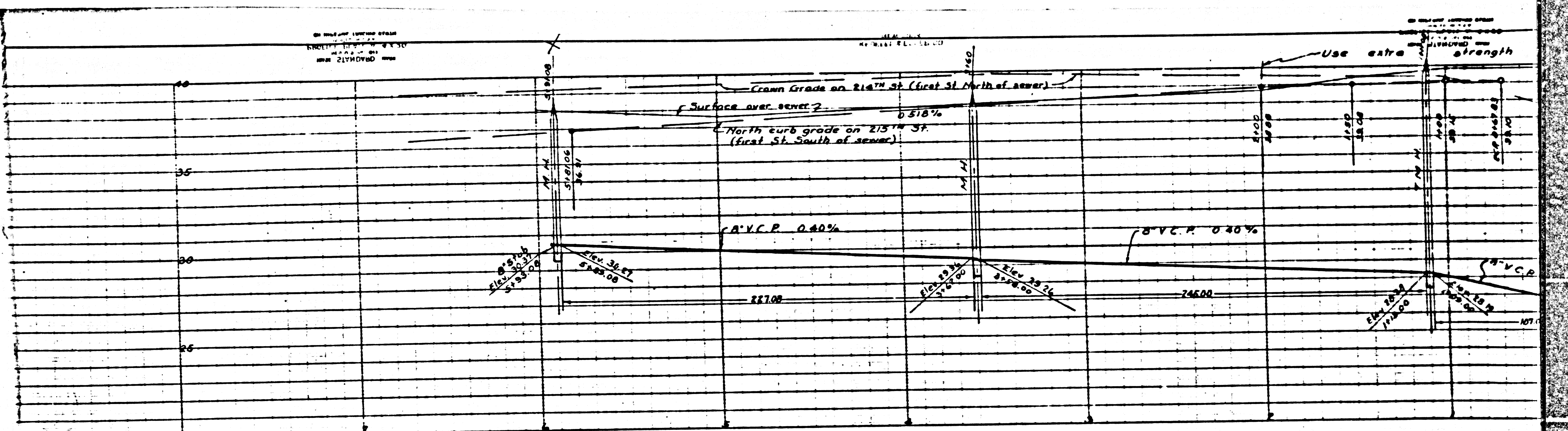
Approved: [Signature]
 County Engineer

Approved: [Signature]
 Chief Engineer of County Sanitation Dist. No. 8

Approved: [Signature] June 9 1928
 Office of the County Engineer
 R.E. No. 6222 Date

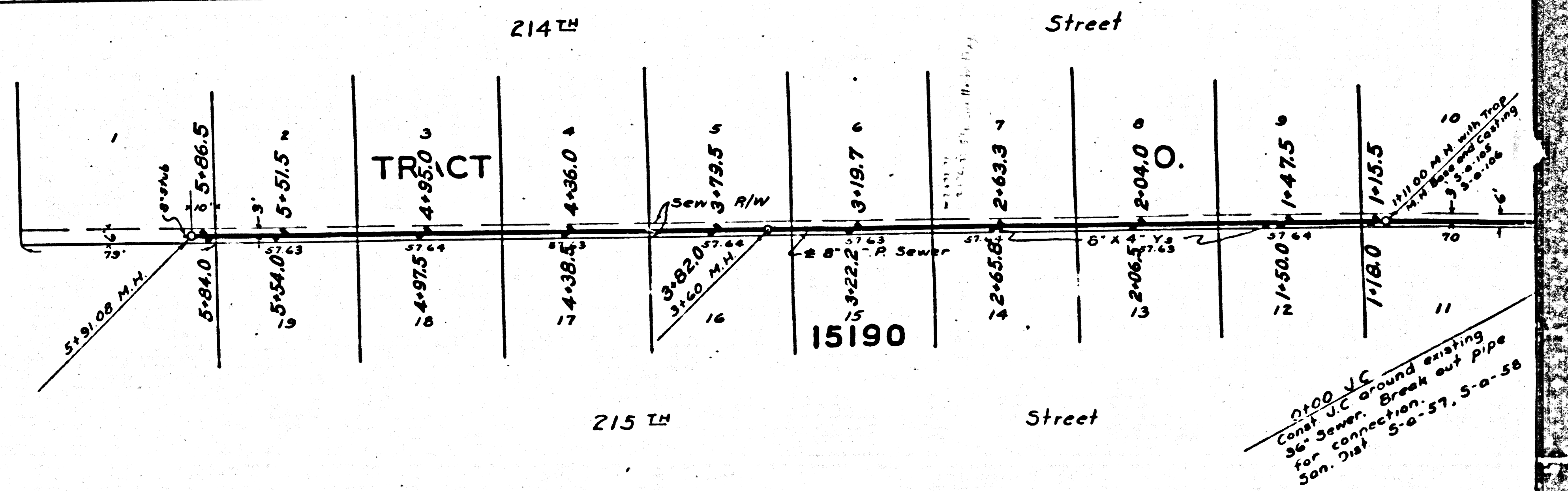
Final CR TIR 12/1/28

15190



P.C. 798 BC-11

②



0.100 V.C.
Cont. V.C. around existing
36" sewer. Break out pipe
for connection 5'-0" S.F. 5'-0" S.F.
Sew. Dist.