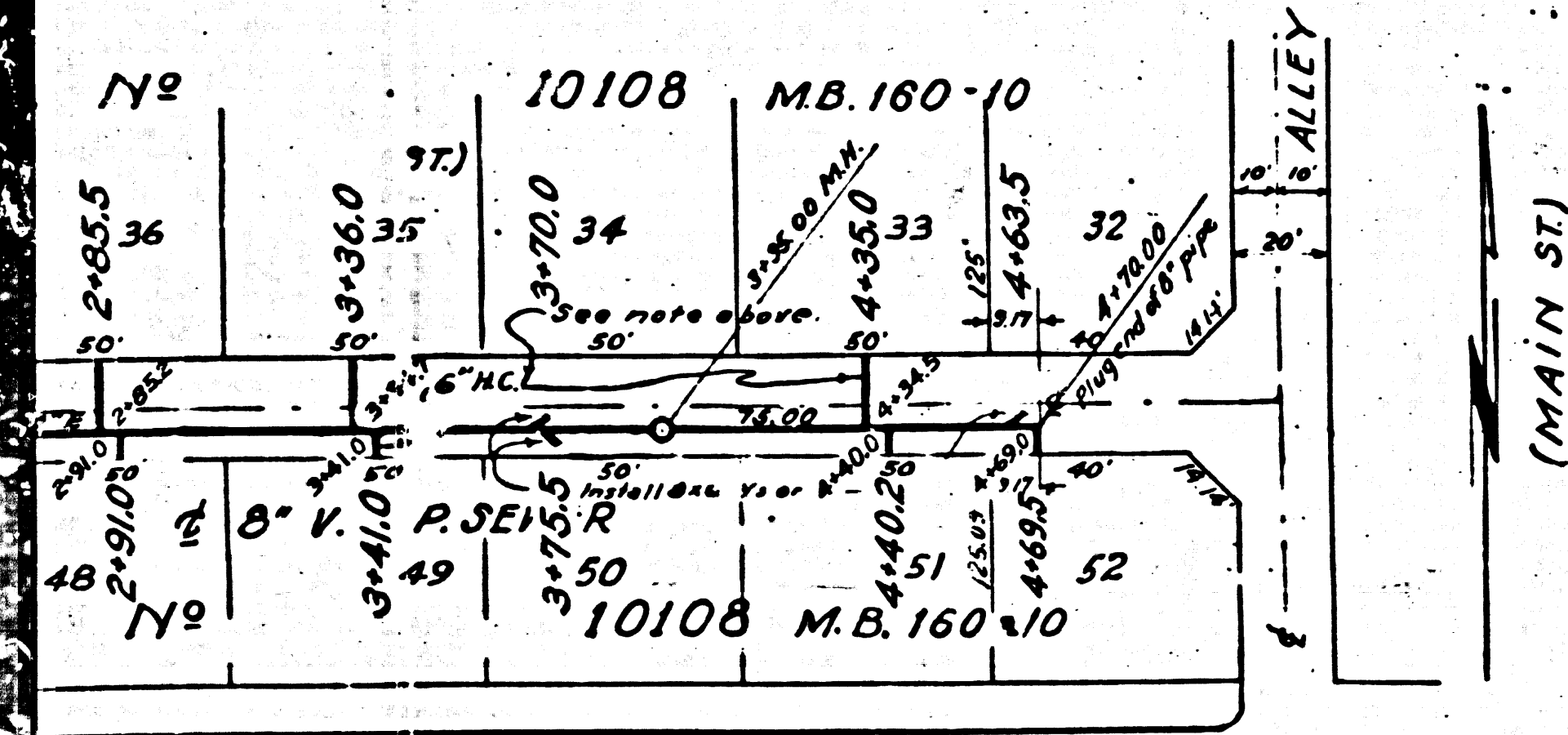
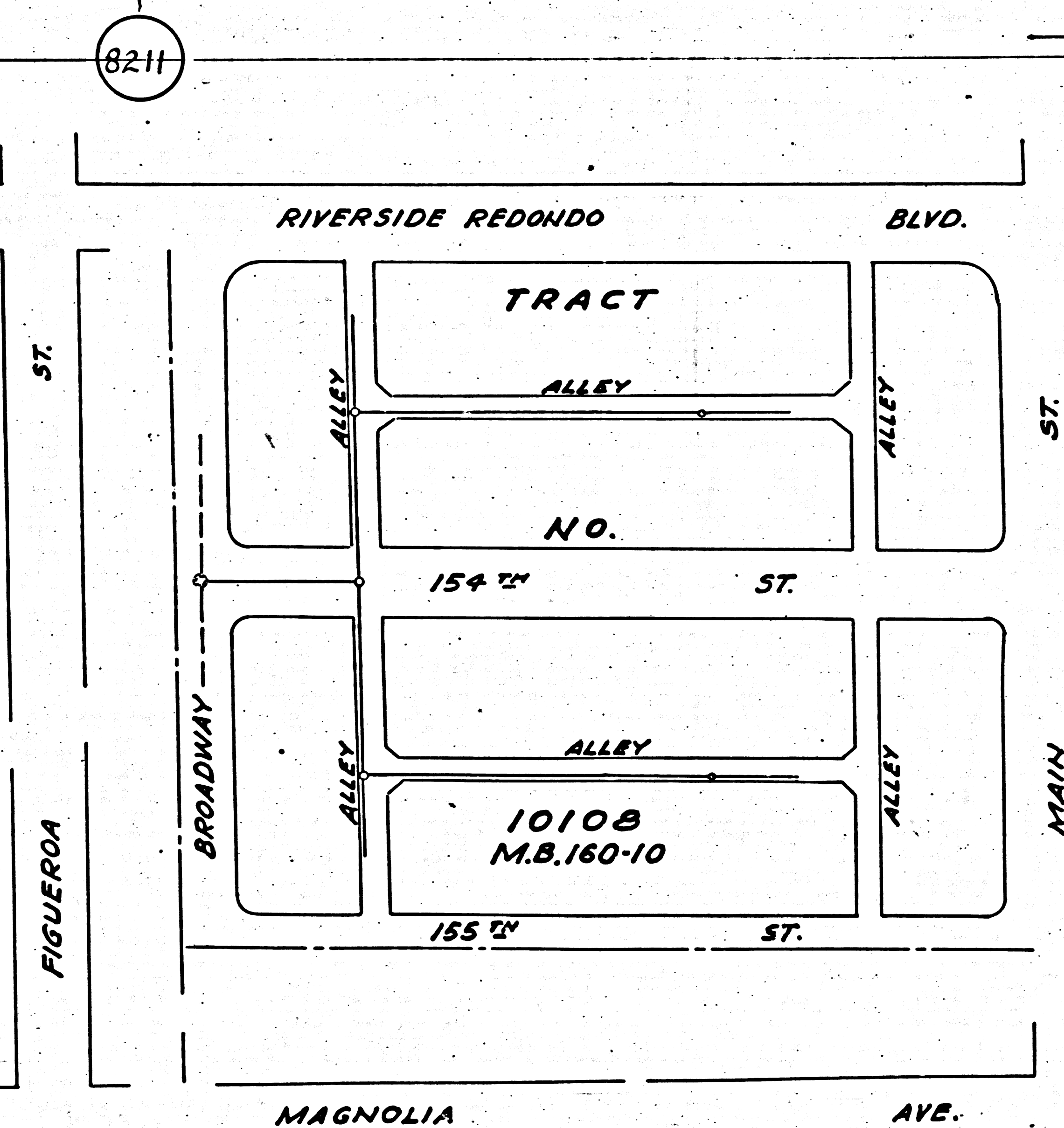


BENCH MARK: Los Angeles County No 8-83
 Elev. 54.82. L & T (S.E.) & intersection
 Broadway and Riverside Redondo Blvd.



KEY MAP
 SCALE: 1" = 100'
 PC 802 Final C.T.P. 11/15/42



NOTES: Use Los Angeles County Standard Manholes, S-a-104
 Use Standard Strength Vitriified Clay Pipe
 Use Cement Mortar for all V.C. Pipe Joints
 Resurface all Trenches within paved areas to meet L.A. County Road Dept. requirements.
 House Connections are to be constructed with Inverts at Property Line 5' below Curb Grade, except as noted.
 Use Standard Manhole Frame and Cover - Sets S-a-117

No Representative of the County Engineer will Survey or Layout any Portion of the Work.
 The Owner or his Authorized Representative shall furnish the County Engineer with Grade Sheets and Stations of all House Connections and Y-Branches and shall provide Stakes for them at their proper locations with the Stationing plainly marked. Any change of Location shall be requested in Writing by the Owner or his Representative.
 No Revisions shall be made in this Plan without the Approval of the County Engineer.

Grades to which this Improvement is to be constructed are shown on Profile. Grade Points for Top of Curb or Center Line of Alley are shown by Circles on Profile.
 At all points between designated Points the Grade shall be established so as to conform to a straight Line drawn between said designated Points.
 Elevations are in feet above U.S.G.S. Datum or Mean Sea Level.
 This drawing and the data hereon are hereby made a Part of the Specifications.
 Work shall be constructed according to Specifications on file in the Office of the County Engineer and shall be prosecuted only in the presence of the County Engineer.
 Before work can be started the Contractor must obtain a Permit to excavate in County Streets from the L.A. County Rd. Dept., 211 South Main St., and make a Deposit with the County Engineer, 700 Fashion League Bldg., sufficient to cover the cost of Construction, Inspection and Record Plans.

PROFILE, ALIGNMENT AND GRADE
 SANITARY SEWER
 TO BE CONSTRUCTED IN

154TH ST. - BETWEEN BROADWAY AND ALLEY 100' E'LY.
 ALLEY - 100' EAST OF BROADWAY BETWEEN RIVERSIDE REDONDO BLVD. AND 155TH ST.
 ALLEY - EAST OF BROADWAY BETWEEN RIVERSIDE REDONDO BLVD. AND 154TH ST.
 ALLEY - EAST OF BROADWAY, BETWEEN 154TH ST. AND 155TH ST. IN TRACT NO. 10108 MB 160-10 PRIVATE CONTRACT NO. 802 W.S. 26

SCALE: VERT. 1" = 4'
 HOR. 1" = 40'

PREPARED IN THE OFFICE OF
 GERALD G. FITZGERALD
 BY: *Gerald G. Fitzgerald*
 REG. NO. 126

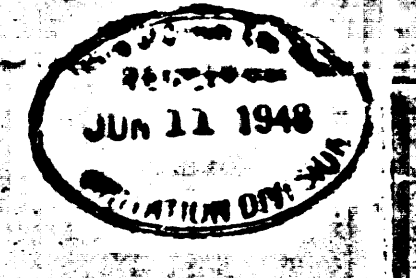
COUNTY OF LOS ANGELES, CALIFORNIA
 APPROVED: *Gerald G. Fitzgerald*
 COUNTY ENGINEER

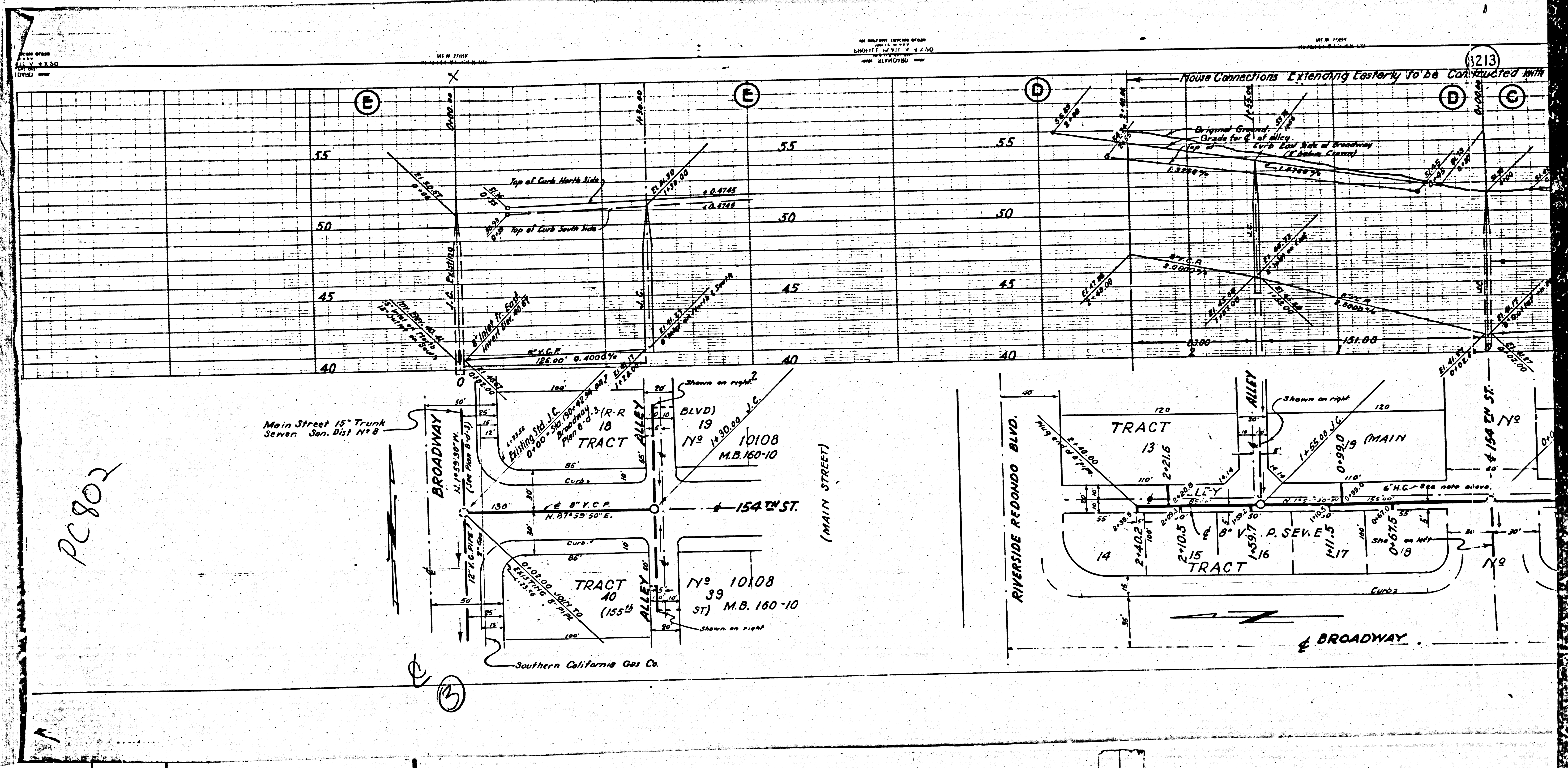
APPROVED: *[Signature]*
 OFFICE ENGINEER
 FOR CHIEF ENGINEER COUNTY SAN. DIST. NO. 8

CHECKED BY: *[Signature]* June 3 1943
 OFFICE OF COUNTY ENGR. REG. C.E. 4232

R-760

DC 802





PC 802

(3)

M3

M3