

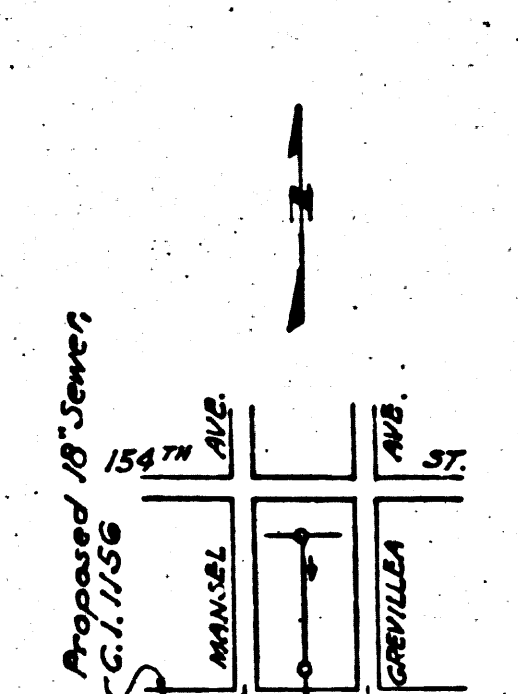
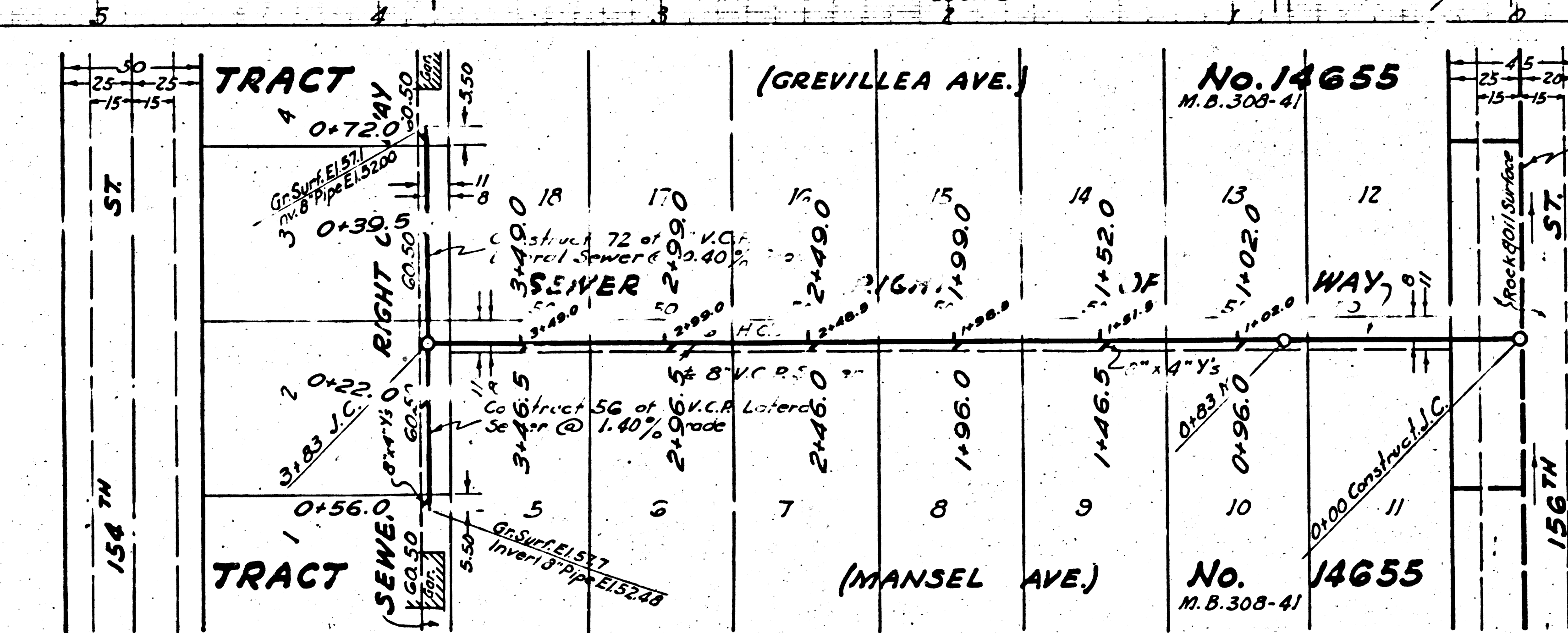
B.M. L.P. 44 E. 152.978 (P.B. 1239-106)
 156 W. 51st St. at Grevillea Ave. N.E. Cor.
 Wire Spk. in P.P. # 653292E

1. Use Standard Manhole Frames and Covers, S-a-117
2. Use Standard Strength Pipe.
3. Use Cement Mortar for all Whittied Clay Pipe Joints.
4. Resurface all trench within Paved Area to meet L.A. County Road Dept. requirements.
5. Excavate four feet of Sewer at points of interference with Poles as per S-a-113
6. All Structures shall be Brick Sewer Structures, S-a-104
7. Construct Tops of Structures in Right-of-Way 6\"/>

NOTE: No representative of the County Engineer will survey or lay out any portion of the work. The owner or his authorized representative shall furnish the County Engineer with Grade Sheets and Stationing for all House Connections and shall provide stakes for these at their proper locations with staking plainly marked. Any change of location shall be requested in writing by the contractor to the representative. No revisions shall be made in these Plans without approval of the County Engineer.

PROFILE ALIGNMENT AND GRADE OF
SANITARY SEWERS
 TO BE CONSTRUCTED IN
SANITARY SEWER RIGHT OF WAY
 IN TRACT NO. 14655

PRIVATE CONTRACT NO. 807
 W.S. 25
 ONE SHEET
 Scale: Vert. 1"=4'
 Hor. 1"=40' May 1948
 PREPARED IN THE OFFICES OF
SEABOARD ENGINEERING CO.
 By *Mark A. Cohen*
 Reg. C. E. No. 2038



INDEX MAP
 Scale: 1"=200'
 P.C. 807

FOR LEGEND
 See Plan No. S-a-64

NOTE: Grades to which this improvement is to be constructed are shown on Plans and Profiles. Grade points for top of curb, center line of streets, or center line of alley are shown by circles on Profiles. At all points between designated points the grade shall be established so as to conform to a straight line drawn between said designated points. Elevations are in feet above U.S.G.S. Datum or Mean Sea Level. This drawing and the data hereon are hereby made a part of the specifications. Work shall be constructed according to specifications on file in the office of the County Engineer and shall be prosecuted only in the presence of the County Engineer. Before work can be started the Contractor must obtain a permit to excavate in County streets from the L.A. County Road Dept., 211 South Main St. and make a deposit with the County Engineer, 700 Fashion League Building, sufficient to cover the cost of construction inspection and Record Plans.

COUNTY OF LOS ANGELES, CALIFORNIA

APPROVED *[Signature]*
 County Engineer

APPROVED *[Signature]*
 Chief Engineer of County
 Sanitation District No. 1

CHECKED *[Signature]* June 2, 1948
 Office of County Engineer, Reg. C. E. No. 6322

Final Check 8/2/48