

1. USE STANDARD MANHOLE FRAMES AND COVERS PER PLAN A-9-117 EXCEPT AS NOTED.
  2. USE STANDARD STRENGTH PIPE EXCEPT AS NOTED.
  3. SET GEMENT MORTAR FOR ALL VITRIFIED CLAY PIPE JOINTS.
  4. RESURFACE ALL TRENCH WITHIN PAVED AREA TO MEET LOS ANGELES COUNTY ROAD DEPT. REQUIREMENTS.
  5. CONSTRUCT HOUSE CONNECTIONS WITH INVERT AT PROPERTY LINE FIVE FEET BELOW GRADE OF CENTER LINE.
  6. ENCASE FOUR FEET OF SEWER AT POINTS OF INTERFERENCE WITH POLES AS PER S-6-113.
  7. ALL STRUCTURES SHALL BE BRICK SEWER STRUCTURES, S-6-104.
- NOTE:  
 NO REPRESENTATIVE OF THE COUNTY ENGINEER WILL SURVEY OR LAY OUT ANY PORTION OF THE WORK.  
 THE OWNER OR HIS AUTHORIZED REPRESENTATIVE SHALL FURNISH THE COUNTY ENGINEER WITH GRADE SHEETS AND STATIONS OF ALL HOUSE CONNECTIONS AND Y-BRANCHES, AND SHALL PROVIDE STAKES FOR THEM AT THEIR PROPER LOCATIONS WITH STATIONING PLAINLY MARKED.  
 ANY CHANGE OF LOCATION SHALL BE REQUESTED IN WRITING BY THE OWNER OR HIS REPRESENTATIVE.  
 NO REVISIONS SHALL BE MADE IN THESE PLANS WITHOUT APPROVAL OF THE COUNTY ENGINEER.  
 SANITATION DISTRICT MUST BE NOTIFIED BEFORE WORK CAN START.

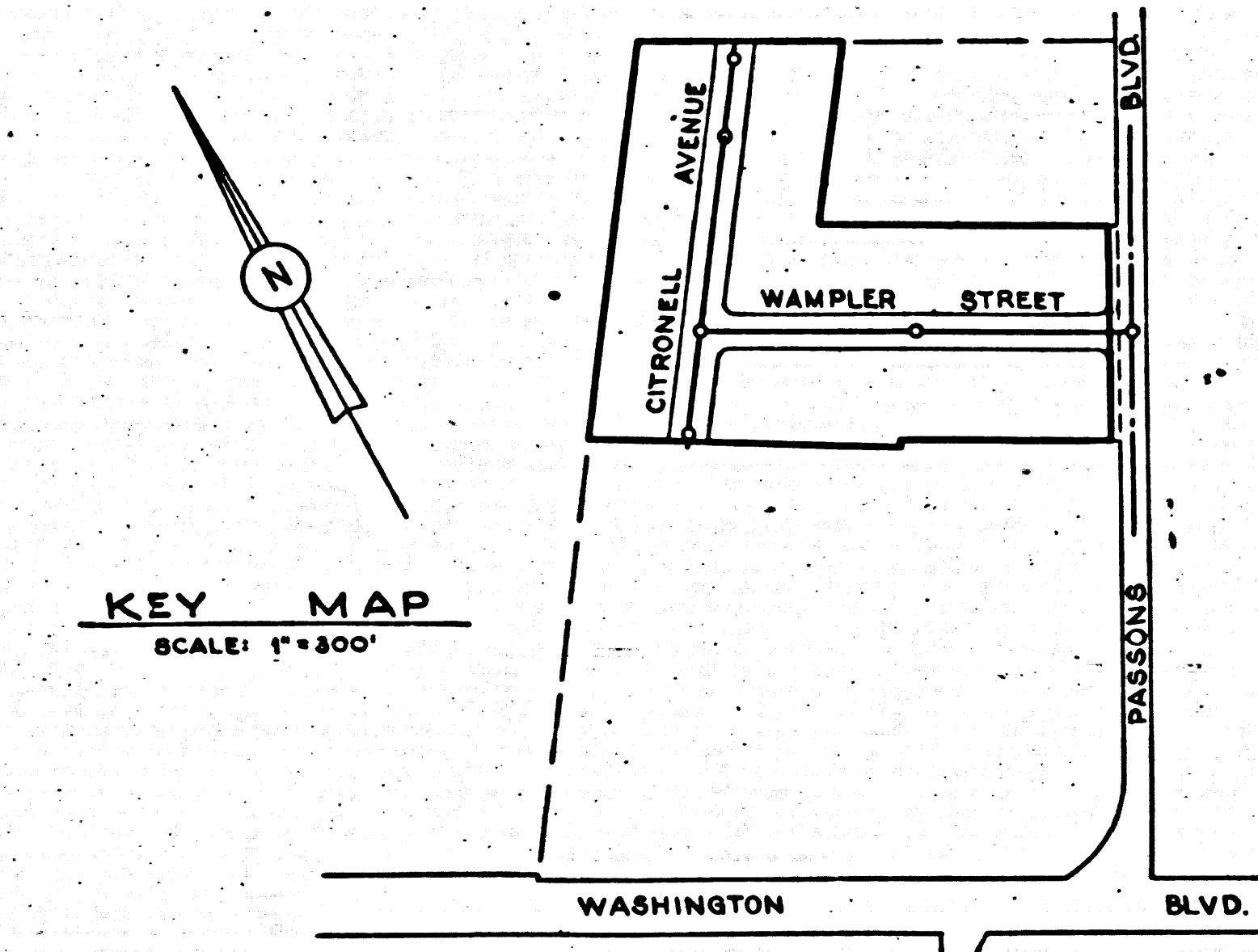
**PROFILE, ALIGNMENT AND GRADE OF  
 SANITARY SEWERS  
 TO BE CONSTRUCTED IN  
 WAMPLER STREET AND CITRONELL AVENUE  
 IN TRACT NO 15150**

PRIVATE CONTRACT NO PC 818  
 W.S. 36  
 SHEET 1 OF 1 SHEETS  
 PREPARED IN THE OFFICE OF LEONARD H. LEONARD

BY: *Leonard H. Leonard*  
 REGISTERED CIVIL ENGINEER, No. 2822  
 SCALE: Ver. 1"=4'  
 Hor. 1"=40' JULY 1948

FOR LEGEND, SEE PLAN NO S-a-64  
 NOTE:  
 GRADES TO WHICH THIS IMPROVEMENT IS TO BE CONSTRUCTED ARE SHOWN ON PLANS AND PROFILES. GRADE POINTS FOR TOP OF CURB, CENTER LINE OF STREET OR CENTER LINE OF ALLEY ARE SHOWN BY CIRCLES ON PROFILES. AT ALL POINTS BETWEEN DESIGNATED POINTS THE GRADE SHALL BE ESTABLISHED SO AS TO CONFORM TO A STRAIGHT LINE DRAWN BETWEEN SAID DESIGNATED POINTS.  
 ELEVATIONS ARE IN FEET ABOVE U.S.G.S. DATUM OR MEAN SEA LEVEL.  
 THIS DRAWING AND THE DATA HEREON ARE HEREBY MADE A PART OF THE SPECIFICATION AND WORK SHALL BE CONSTRUCTED ACCORDING TO SPECIFICATIONS ON FILE IN THE OFFICE OF THE COUNTY ENGINEER, AND SHALL BE PROSECUTED ONLY IN THE PRESENCE OF THE COUNTY ENGINEER. BEFORE WORK CAN BE STARTED, THE CONTRACTOR MUST OBTAIN A PERMIT TO EXCAVATE IN COUNTY STREETS FROM THE L.A. COUNTY ROAD DEPT., 211 SOUTH MAIN, AND MAKE A DEPOSIT WITH THE COUNTY ENGINEER, 700 FASHION LEAGUE BUILDING, SUFFICIENT TO COVER THE COST OF CONSTRUCTION INSPECTION AND RECORD PLANS.

COUNTY OF LOS ANGELES, CALIFORNIA

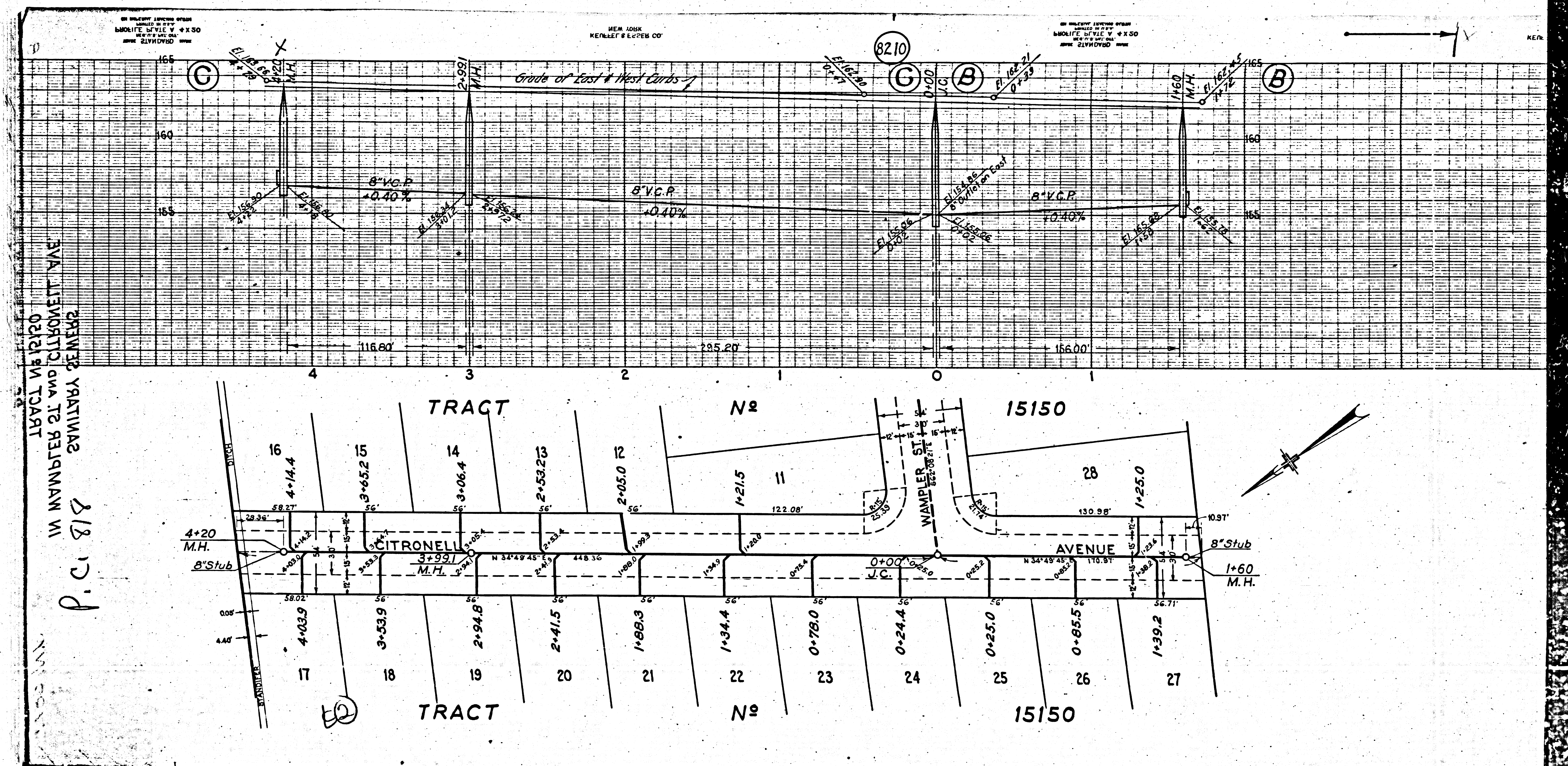


- 14" W. of L. - So. Counties Gas Co. - 2" Gas
- 17" W. of L. - So. Counties Gas Co. - 10" H.P. Gas
- 18" W. of L. - Texas Co. - 6" Oil
- 19" W. of L. - Texas Co. - 3" Gasoline

Final Ck T.P. 11/10/48

APPROVED *Leonard H. Leonard*  
 COUNTY ENGINEER  
 RECEIVED SEP 14 1948  
 SANITATION DISTRICT NO. 12  
 APPROVED *Carl Law*  
 CHIEF ENGINEER OF COUNTY SANITATION DISTRICT NO. 12  
 CHECKED BY *D. W. Jones* Aug 30 1948  
 OFFICE OF COUNTY ENGINEER, ROOM 1212

IN WAMPLER STREET AND CITRONELL AVENUE  
 SANITARY SEWERS



15701 16 17 20  
 IN NUMBER 21 AND CITRONELLI AVE  
 2011184 22 15150  
 P.C. 818

NEW YORK  
 KENNEL & LUPEN CO.  
 ENGINEERS

NEW YORK  
 KENNEL & LUPEN CO.  
 ENGINEERS

NEW YORK  
 KENNEL & LUPEN CO.  
 ENGINEERS

