

(847)

B.M. 17462
ON TOP OF
FIRE HYDRANT - NE
CORNER INDIANA ST.
& BANDINI BLVD.

- (1) USE STANDARD MANHOLE FRAME AND COVER 5'-0" DIA.
- (2) USE EXTERIOR STRENGTH PIPE
- (3) USE CEMENT MORTAR FOR ALL VITRIFIED CLAY PIPE JOINTS
- (4) ALL STRUCTURES SHALL BE BRICK SEWER STRUCTURES 5'-0" DIA.
- (5) RESURFACE ALL TRENCH WITHIN PAVED AREA TO MEET LOS ANGELES COUNTY ROAD DEPARTMENT SPECIFICATIONS
- (6) CONSTRUCT HOUSE CONNECTIONS WITH INVERT AT PROPERTY LINE 6 FEET BELOW CURB GRADE

NOTE -
No Representative of the County Engineer will survey or layout any portion of the work.
The owner or his authorized representative shall furnish the County Engineer with Grade sheets and stations of all Y branches and shall provide stakes for them at their proper locations with stationing plainly marked. Any change of location shall be requested in writing by the owner or his representative. No revisions shall be made in these plans without approval of the County Engineer.

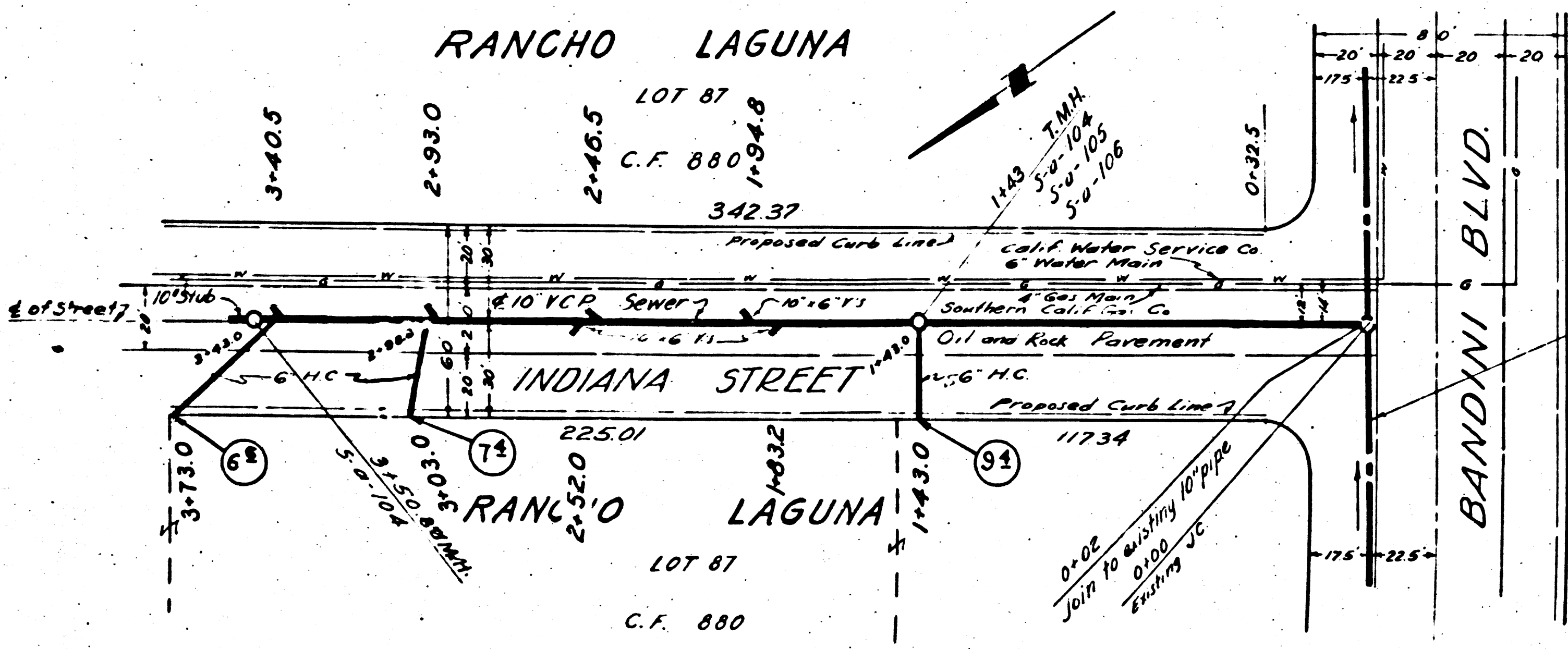
PROFILE ALIGNMENT AND GRADE OF
SANITARY SEWERS
TO BE CONSTRUCTED IN
INDIANA STREET
FROM BANDINI BLVD. TO 350 FEET NORTH

PRIVATE CONTRACT NO. 825
W.S. 23
SHEET 1 OF 2 SHEETS

SCALE: HORIZ. 1"=40'
VERT. 1"=4'

JUNE, 1948
PREPARED IN THE OFFICES OF
HAROLD A. BARNETT
by *Harold A. Barnett*
REG. C.E. NO. 1216

FOR LEGEND
SEE PLAN NO S-d-64

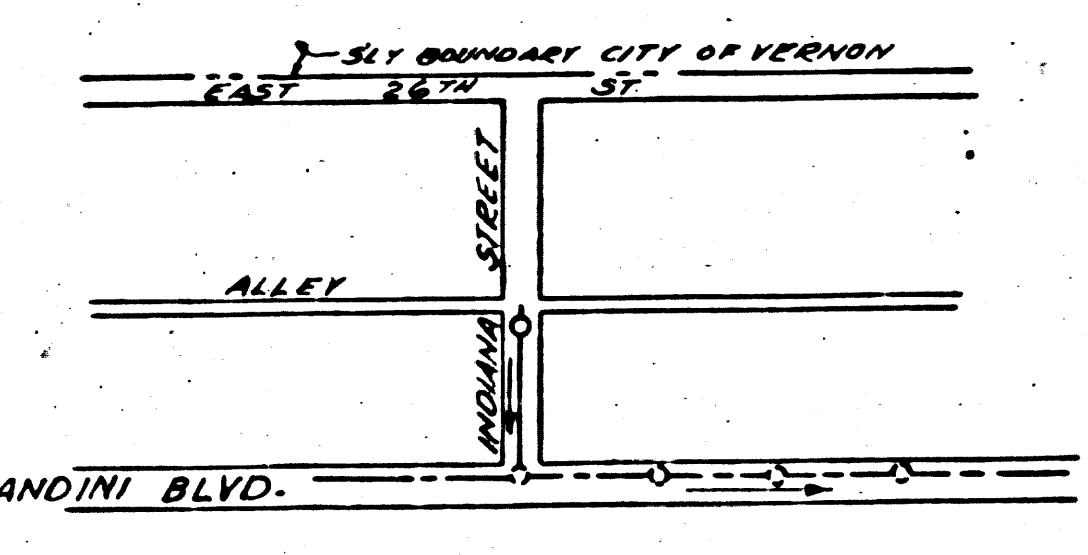


Existing 21" Sewer
East No 2 Trunk Sewer
San. Dist No 2

Final Ck 1/20/49

EO

PC 825
INDEX MAP
SCALE 1"=600'



Note:
Before any connection for the disposal of liquid industrial waste is made to this sewer, detailed plans must be submitted to and a permit secured from the County Engineer.

NOTE
Grades to which this improvement is to be constructed are shown on Plans and Profile Grade points for top of curb, or center-line of street are shown by circles on Profiles. At all points between designated points between designated points the grade shall be established so as to conform to a straight line drawn between said designated points.
Elevations are in feet above U.S.G.S datum or mean sea level.
This drawing and the data hereon are hereby made a part of the specifications.
Work shall be constructed according to specifications on file in the office of the County Engineer and shall be prosecuted only in the presence of the County Engineer.
Before work can be started, the Contractor must obtain a permit to excavate in County Streets from the L.A. County Road Department, 211 South Main Street and make a deposit with the County Engineer sufficient to cover the cost of construction inspection and record plans.
If work is to be done in a State Highway, a permit must be obtained from the State of California, Division of Highway, 808 State Building after making the deposit with the County Engineer.

APPROVED FOR THE COLLECTION OF LIQUID INDUSTRIAL WASTE
Arthur K. Hubert 7/20/48
INDUSTRIAL WASTE ENGINEER - OFFICE OF COUNTY ENGINEER

APPROVED *G.E. Lutz*
COUNTY ENGINEER

CHECKED BY *B. Williams* July 13, 1948
OFFICE OF COUNTY ENGINEER (SHEET NO. 42)

COUNTY OF LOS ANGELES, CALIFORNIA

ACTIVE CIVIL ENGINEER OF CALIFORNIA
SANITATION DISTRICT NO. 2

TRIM LINE