

1. Use Standard Manhole Frames and Covers, S-a-117
2. Use Standard Strength Pipe
3. Use Cement Mortar for all Vitrified Clay Pipe Joints.
4. Resurface all trench within paved Area to meet L.A. County Road Dept. requirements.
5. Encase four feet of Sewer at points of interference with Poles as per S-a-119
6. All Structures shall be Brick Sewer Structures, S-a-104

3. No. 1, Cross on Concrete top of inlet to
 storm Drain, 4\"/>

NOTE:
 No representative of the County Engineer will survey or lay out any portion of the work.
 The owner or his authorized representative shall furnish the County Engineer with grade stakes
 and stations for all house connections and Y Branches and street manholes to be shown
 of their proper locations with adjoining plainly marked. Any change of location shall be
 requested in writing by the owner or his representative.
 No revisions shall be made in these Plans without approval of the County Engineer.

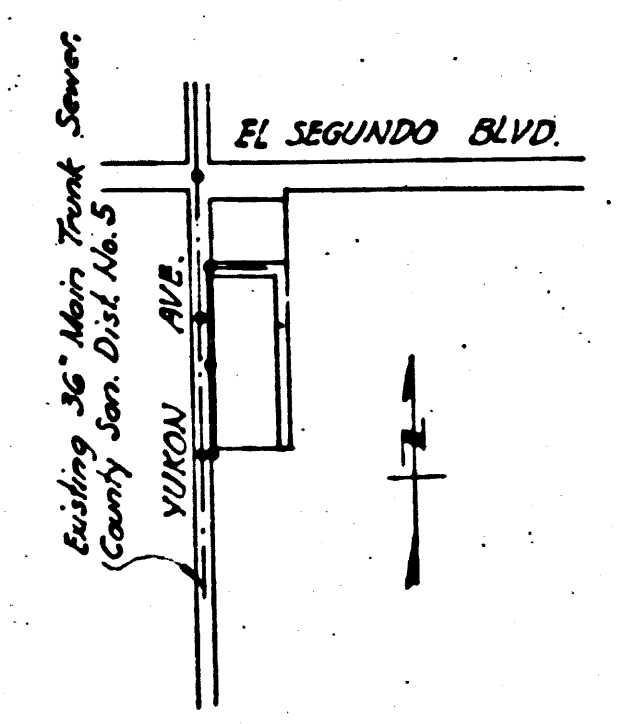
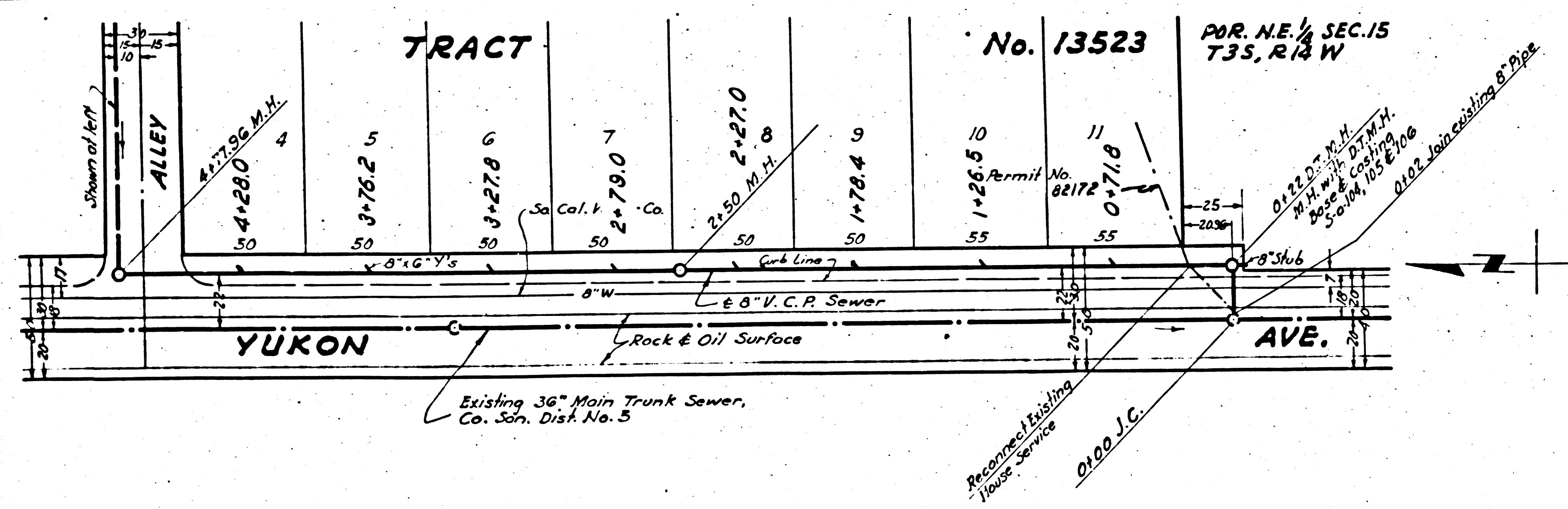
**PROFILE, ALIGNMENT AND GRADE OF
 SANITARY SEWERS
 TO BE CONSTRUCTED IN
 YUKON AVENUE
 BETWEEN SOUTHERLY LINE OF TRACT NO. 13523 & EL SEGUNDO BLVD.
 FIRST ALLEY SOUTH OF EL SEGUNDO BLVD.
 BETWEEN YUKON AVE. & A POINT 150 FT. EASTERLY THEREOF**

**PRIVATE CONTRACT NO. 836
 W.S. 25
 SHEET 1 OF 1 SHEET**
 Scale: Vert. 1"=4'
 Horiz. 1"=40'
 June, 1948
**PREPARED IN THE OFFICES OF
 JONES & GILBERT**

BY *Paul J. Jones*
 Eng. C.E. No. 2311

FOR LEGEND
 See Plan No. S-a-64

NOTE:
 Grades to which this improvement is to be constructed are shown on Plans and Profiles.
 Grade points for top of curb, center line of streets, or center line of alley are shown by
 circles on Profiles. At all points between designated points the grade shall be established
 as a straight line drawn between said designated points.
 Elevations are in feet above U. S. G. S. Datum or Mean Sea Level.
 This drawing and the data hereon are hereby made a part of the specifications.
 Work shall be constructed according to specifications on file in the office of the
 County Engineer and shall be prosecuted only in the presence of the County Engineer.
 Before work can be started the Contractor must obtain a permit to locate in
 County Streets from the L. A. County Road Dept., 211 So. Main St., and make
 a deposit with the County Engineer, 906 Fashion League Building, sufficient to cover
 the cost of Construction Inspection and Record Plans.



INDEX MAP
 Scale: 1"=600'
 P.C. 836

COUNTY OF LOS ANGELES, CALIFORNIA

APPROVED *C. J. Conpton*
 County Engineer
 APPROVED *C. J. Conpton*
 Acting Chief Engineer of County
 Sanitation District No. 5
 CHECKED *J. P. White* July 22, 1948
 Office of County Engineer, Eng. C.E. No. 6322

Final check 1/21/49 K.K.L.