

DOUBLE SCALE

PROFILE, ALIGNMENT AND GRADE OF
SANITARY SEWERS
 TO BE CONSTRUCTED IN
115TH STREET
IMPERIAL HIGHWAY
 BETWEEN ST. ANDREWS PL. & WILTON PL.
SEWER RIGHT OF WAY IN POR. OF N.E. 1/4,
SEC. 11, T3S, R14W, & WILTON PLACE
 BETWEEN P.E.R. & IMPERIAL HIGHWAY

PRIVATE CONTRACT NO. 844
 W.S. 26
SHEET 2 OF 2 SHEETS

Scale: Vert. 1" = 5'
 Hor. 1" = 40' July 1948
 PREPARED IN THE OFFICES OF
SEABOARD ENGINEERING CO.

Mark A. Robison
 Reg. C.E. No. 2059

FOR LEGEND
 See Plan No. 3-a-66

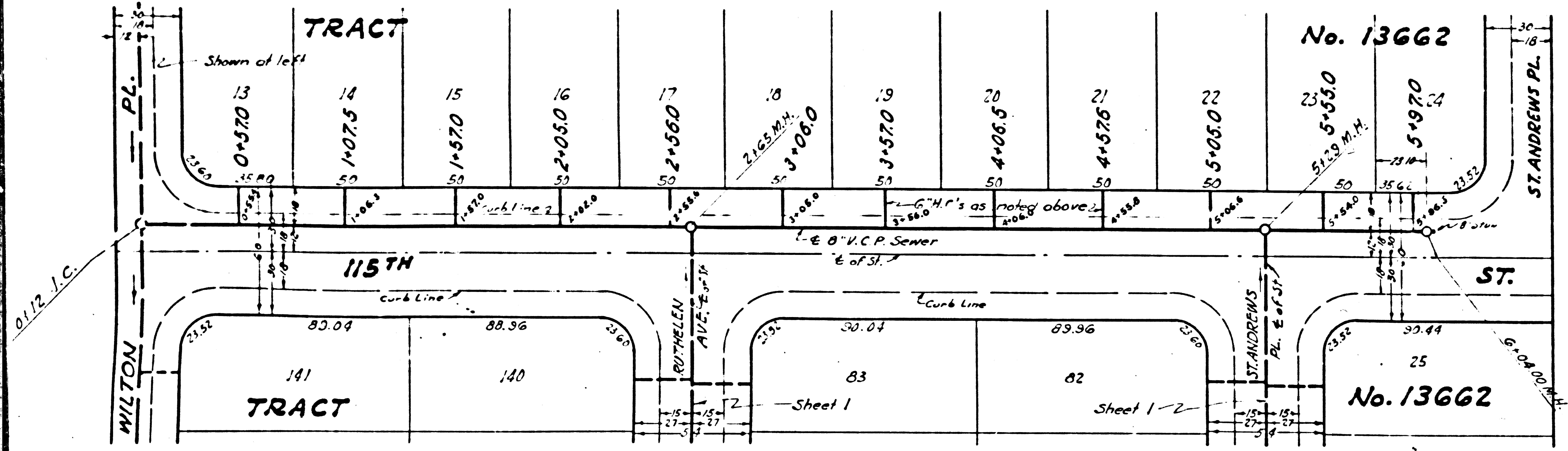
FOR CONSTRUCTION NOTES SEE SHEET 1

COUNTY OF LOS ANGELES, CALIFORNIA

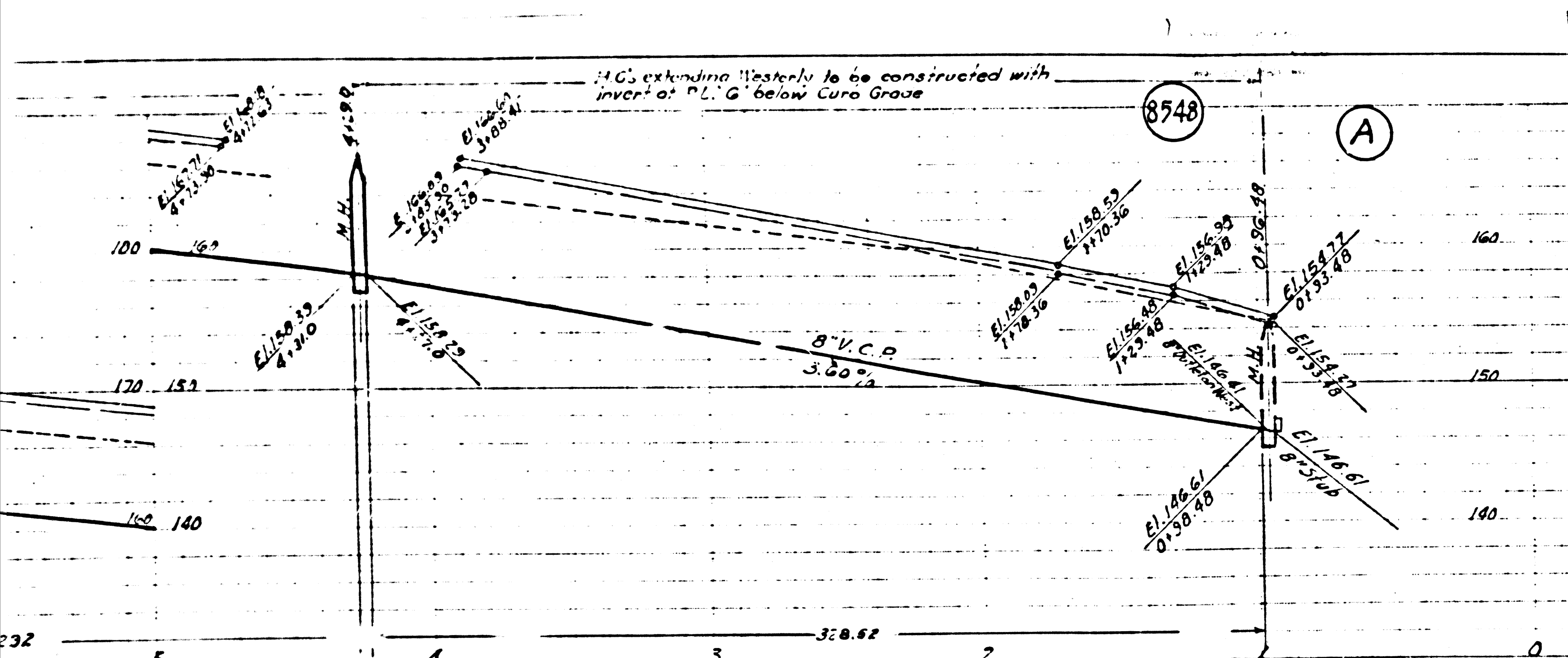
APPROVED *E. J. ...*
 County Engineer

APPROVED *...*
 Chief Engineer of Public
 Sanitation District No. 3

CHECKED *...*
 Office of County Engineer Reg. C.E. No. 2927



1-7-0



DOUBLE SCALE

1. Use Standard Manhole Frames and Covers, S-a-117
2. Use Standard Strength Pipe, except as noted.
3. Use Cement Mortar for all Vitrified Clay Pipe Joints
4. Resurface all trench within Paved Area to meet L.A. County Road Dept. requirements.
5. Encase four feet of Sewer at points of interference with Poles as per S-a-119
6. All Structures shall be Brick Sewer Structures, S-a-104
7. H.C.'s to be constructed with inverts at Property Line 4' below curb grade, except as noted.

Line Sp. in road S¹/₂ N of Nord. C.R. 108th St. & Western Ave. Eter. 295.89. Shown in C.S. P. & S. 153-153 as Eter. 295.758. L&T of E of Imperial Hwy. and Wilton Pl. Eter. 155.05

NOTE: Sanitation District must be notified before work can start.

NOTE: No representative of the County Engineer will survey or lay out any portion of the work. The owner or his authorized representative shall furnish the County Engineer with Grade Sheets and Stations for all House Connections and Y Branches and shall provide stakes for them at their proper locations with stationing plainly marked. Any change of location shall be requested in writing by the owner or his representative. No revisions shall be made in these Plans without approval of the County Engineer.

PROFILE, ALIGNMENT AND GRADE OF
SANITARY SEWERS
TO BE CONSTRUCTED IN
ST. ANDREWS PLACE
RUTHELEN PLACE
BETWEEN SOUTHERLY LINE TRACT NO. 13662 & 115TH ST.
SEWER RIGHT OF WAY
IN TRACT NO. 13662

PRIVATE CONTRACT NO. 844
W.S. 26
SHEET 1 OF 2 SHEETS
Scale: Vert. 1" = 5'
Hor. 1" = 40' July 1948
PREPARED IN THE OFFICES OF
SEABOARD ENGINEERING CO.

By *Mark A. Robie*
Reg. C.E. No. 2059

FOR LEGEND
See Plan No. S-a-64

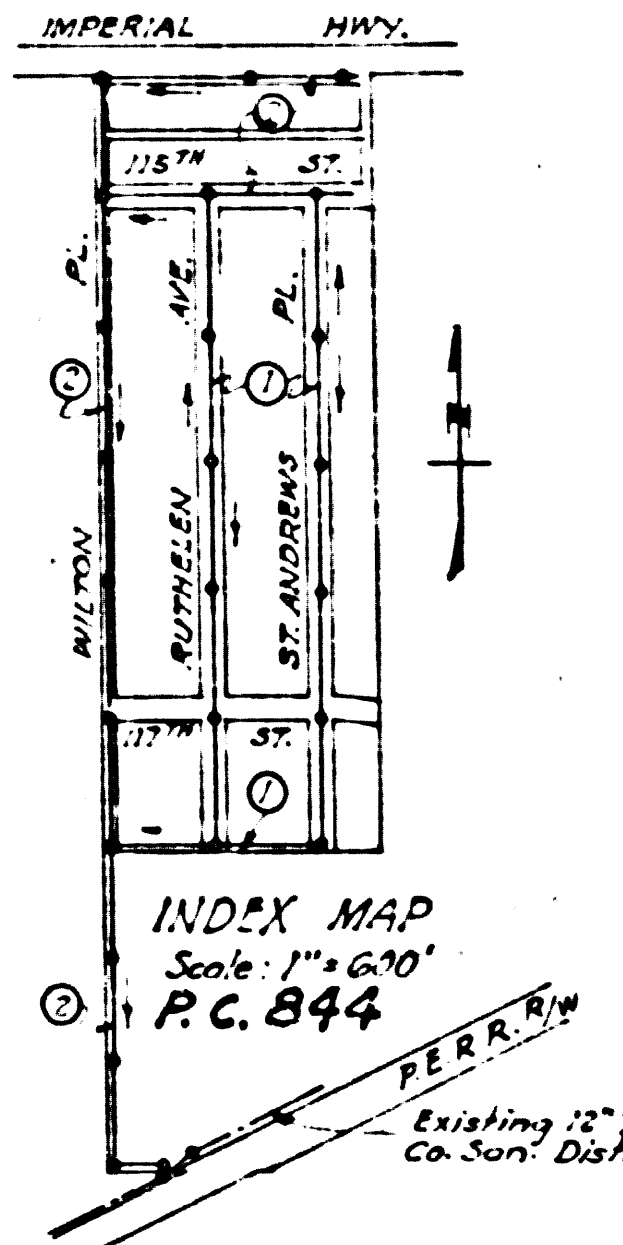
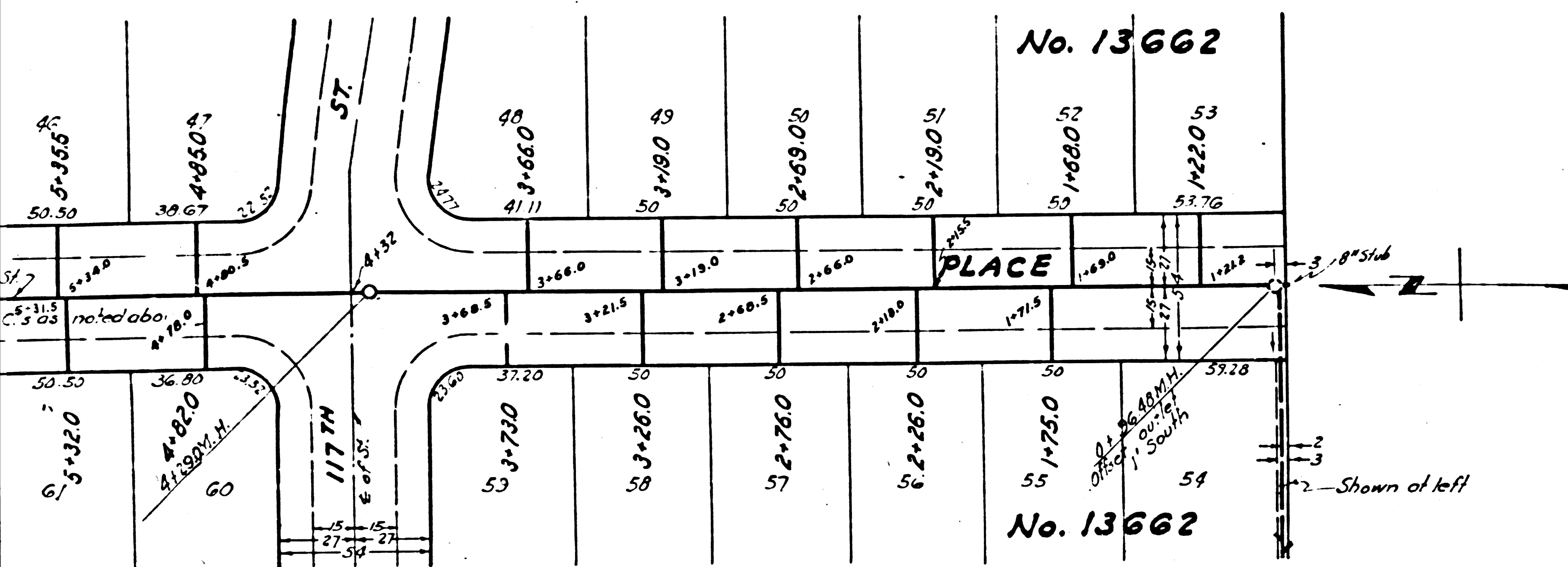
NOTE: Grades to which this improvement is to be constructed are shown on Plans and Profiles. Grade points for top of curb, center line of streets or center line of alley are shown on sections Profiles. At all points between designated points the grade shall be established so as to conform to a straight line drawn between said designated points. Elevations are in feet above U.S.C.S. Datum or Mean Sea Level. This drawing and the data herein are hereby made a part of the specifications. Work shall be constructed according to specifications on file in the office of the County Engineer and shall be prosecuted only in the presence of the County Engineer. Before work can be started the contractor must obtain a permit to excavate in County streets from the L.A. County Road Dept. 211 So. Main St. and make a deposit with the County Engineer, 700 Fashion League Building, sufficient to cover cost of construction inspection and Record Plans.

COUNTY OF LOS ANGELES, CALIFORNIA

APPROVED *[Signature]*
County Engineer

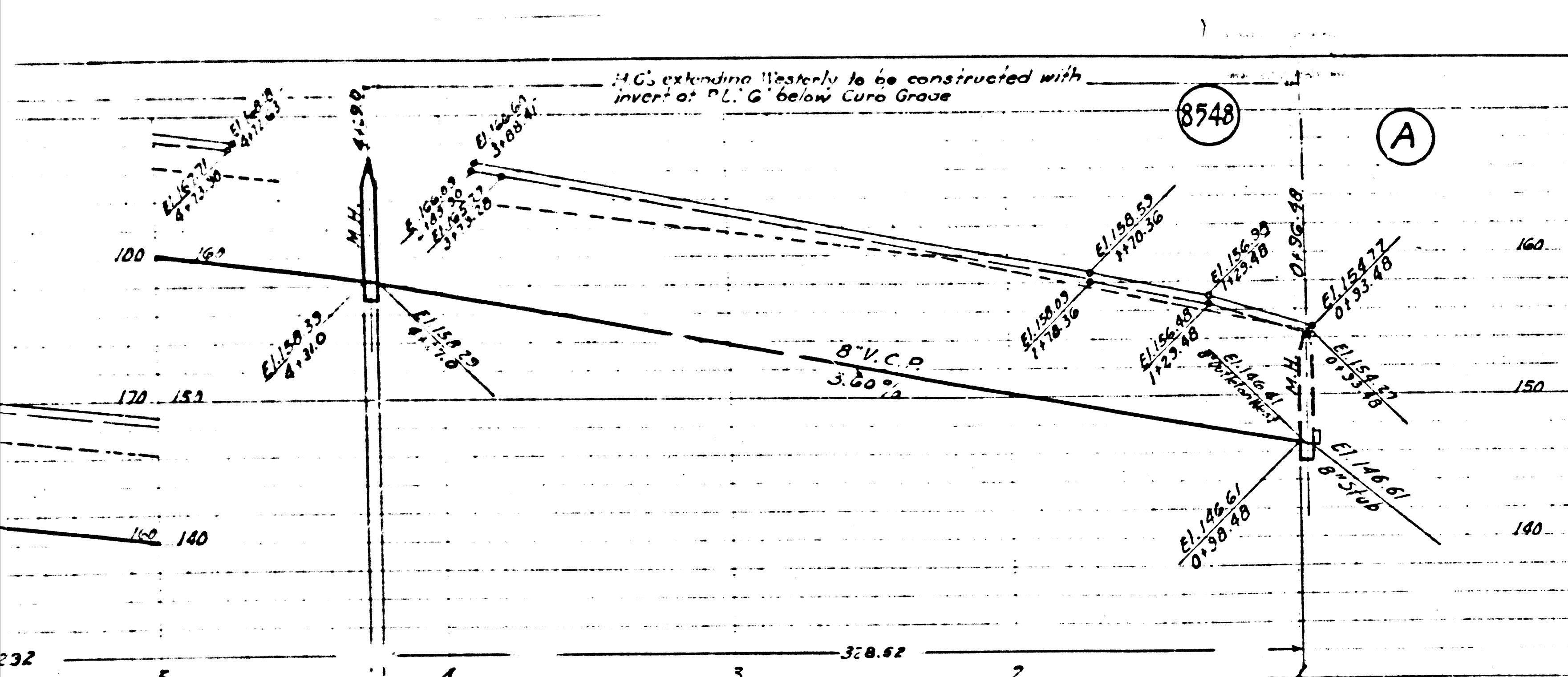
APPROVED *[Signature]*
Chief Engineer of County
Sanitation District No. 5

CHECKED *[Signature]* Oct 4 1948
Office of County Engineer, Reg. C.E. No. 6322



448.09

DE



DOUBLE SCALE

1. Use Standard Manhole Frames and Covers, S-a-117
2. Use Standard Strength Pipe, except as noted.
3. Use Cement Mortar for all Vitrified Clay Pipe Joints
4. Resurface all trench within Paved Area to meet L.A. County Road Dept. requirements.
5. Encase four feet of Sewer at points of interference with Poles as per S-a-119
6. All Structures shall be Brick Sewer Structures, S-a-104
7. H.C.'s to be constructed with inverts at Property Line 4' below curb grade, except as noted.

Line Sp. in road 5' N of Nord. C.R. 108th St. & Western Ave. Elev. 295.89. Shown in C.S. P. & S. 153 as Elev. 295.758. L&T of E. of Imperial Hwy. and Wilton Pl. Elev. 155.05

NOTE: Sanitation District must be notified before work can start.

NOTE: No representative of the County Engineer will survey or lay out any portion of the work. The owner or his authorized representative shall furnish the County Engineer with Grade Sheets and Stations for all House Connections and Y Branches and shall provide stakes for flags at their proper locations with stationing plainly marked. Any change of location shall be requested in writing by the owner or his representative. No revisions shall be made in these Plans without approval of the County Engineer.

PROFILE, ALIGNMENT AND GRADE OF
SANITARY SEWERS
 TO BE CONSTRUCTED IN
ST. ANDREWS PLACE
RUTHELEN PLACE
 BETWEEN SOUTHERLY LINE TRACT NO. 13662 & 115TH ST.
SEWER RIGHT OF WAY
 IN TRACT NO. 13662

PRIVATE CONTRACT NO. 844
 W.S. 26
 SHEET 1 OF 2 SHEETS
 Scale: Vert. 1" = 5'
 Horiz. 1" = 40' July 1948
 PREPARED IN THE OFFICES OF
SEABOARD ENGINEERING CO.

By *Mark J. Robie*
 Reg. C.E. No. 2059

FOR LEGEND
 See Plan No. S-a-64

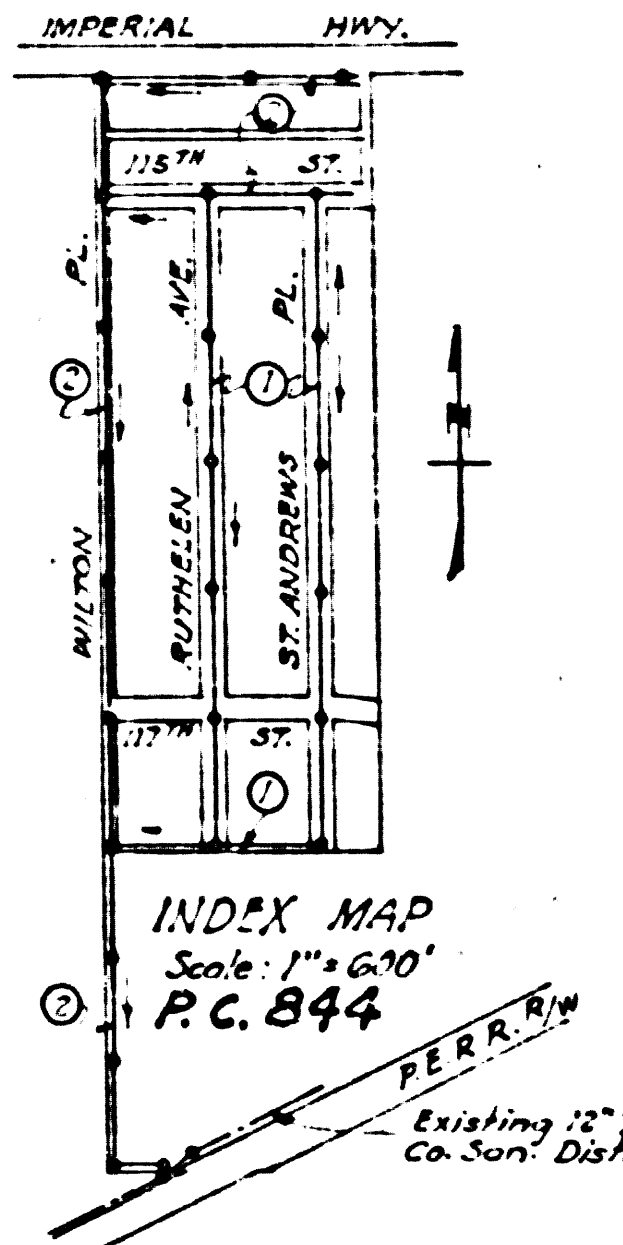
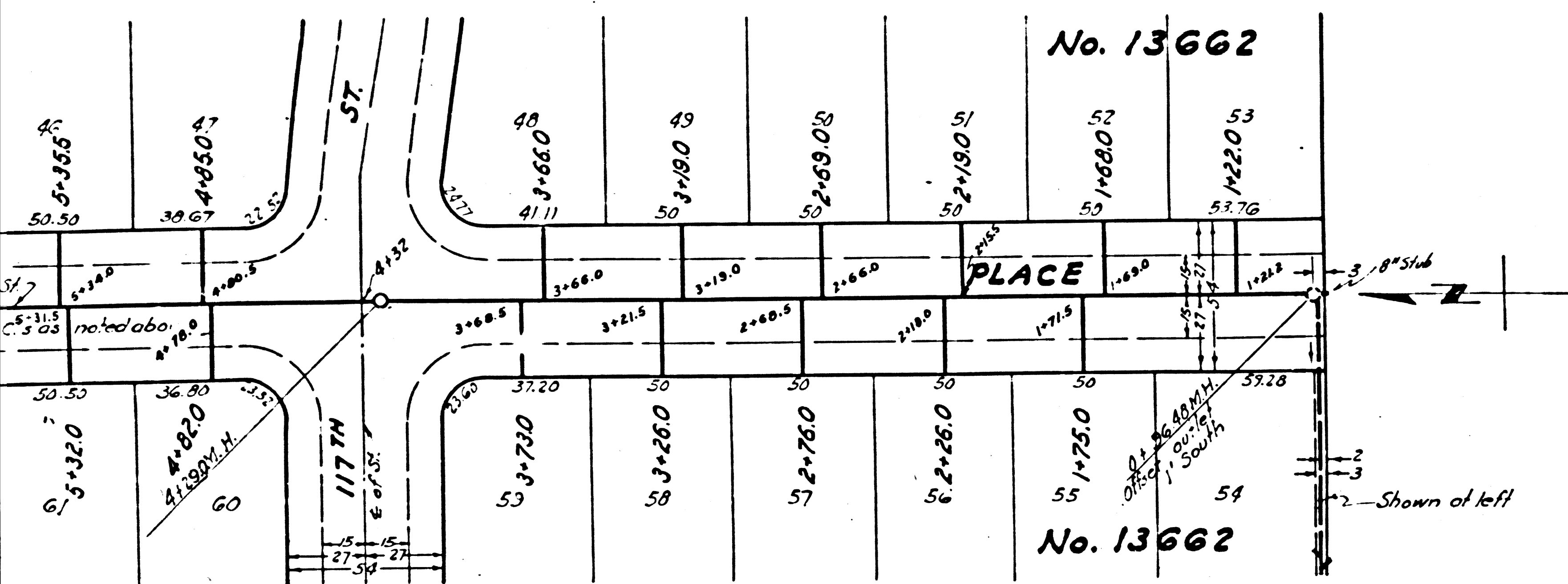
NOTE: Grades to which this improvement is to be constructed are shown on Plans and Profiles. Grade points for top of curb, center line of streets or center line of alley are shown on sections Profiles. At all points between designated points the grade shall be established so as to conform to a straight line drawn between said designated points. Elevations are in feet above U.S.C.S. Datum or Mean Sea Level. This drawing and the data herein are hereby made a part of the specifications. Work shall be constructed according to specifications on file in the office of the County Engineer and shall be prosecuted only in the presence of the County Engineer. Before work can be started the contractor must obtain a permit to excavate in County streets from the L.A. County Road Dept. 211 So. Main St. and make a deposit with the County Engineer, 700 Fashion League Building, sufficient to cover cost of construction inspection and Record Plans.

COUNTY OF LOS ANGELES, CALIFORNIA

APPROVED *[Signature]*
 County Engineer

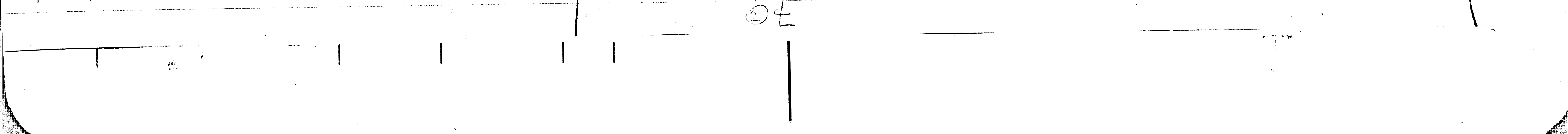
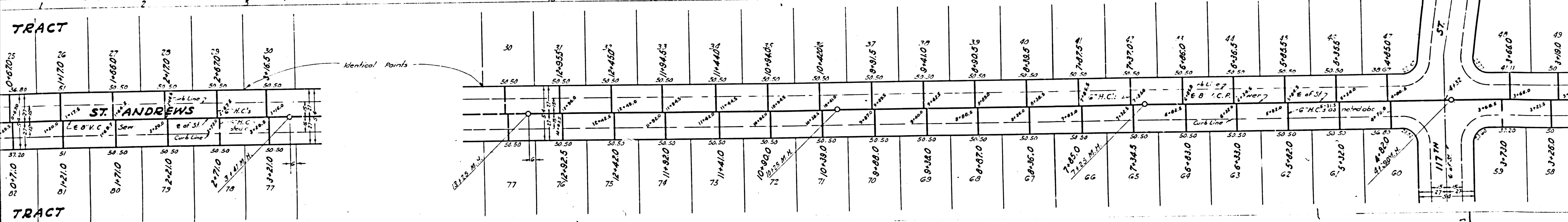
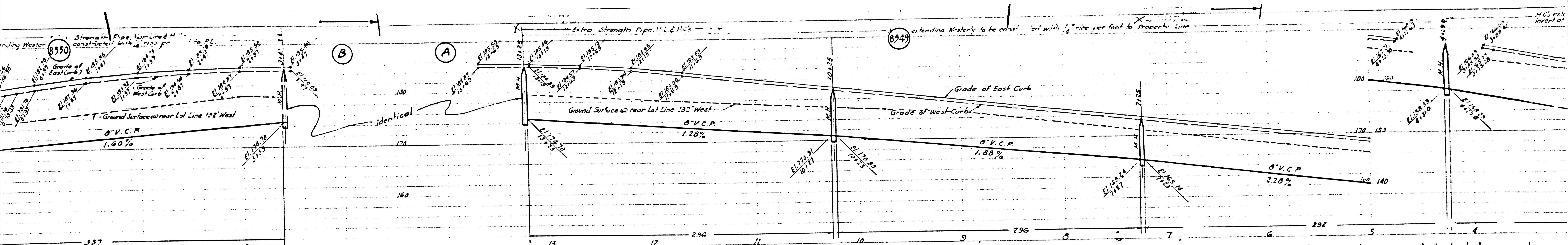
APPROVED *[Signature]*
 Chief Engineer of County
 Sanitation District No. 5

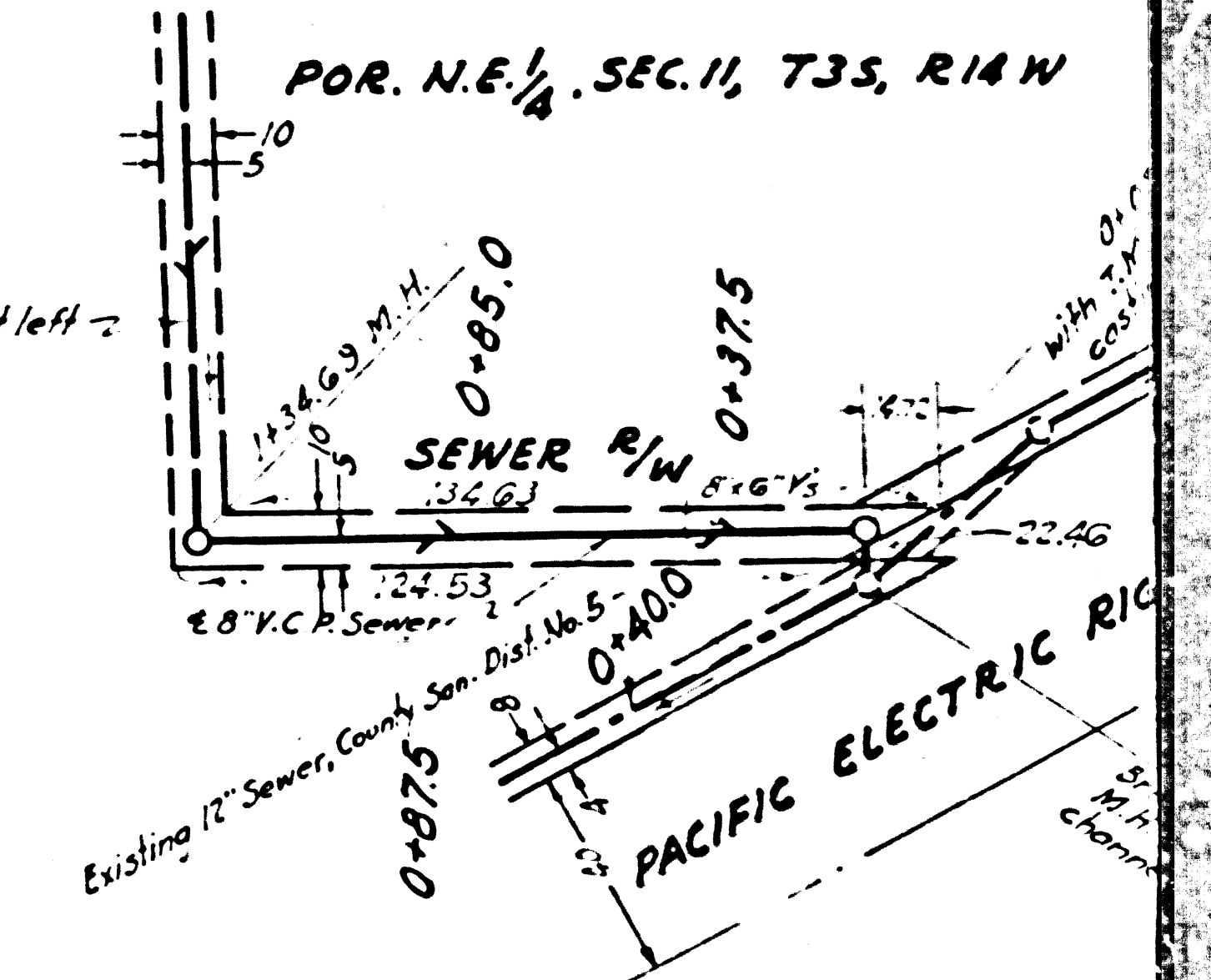
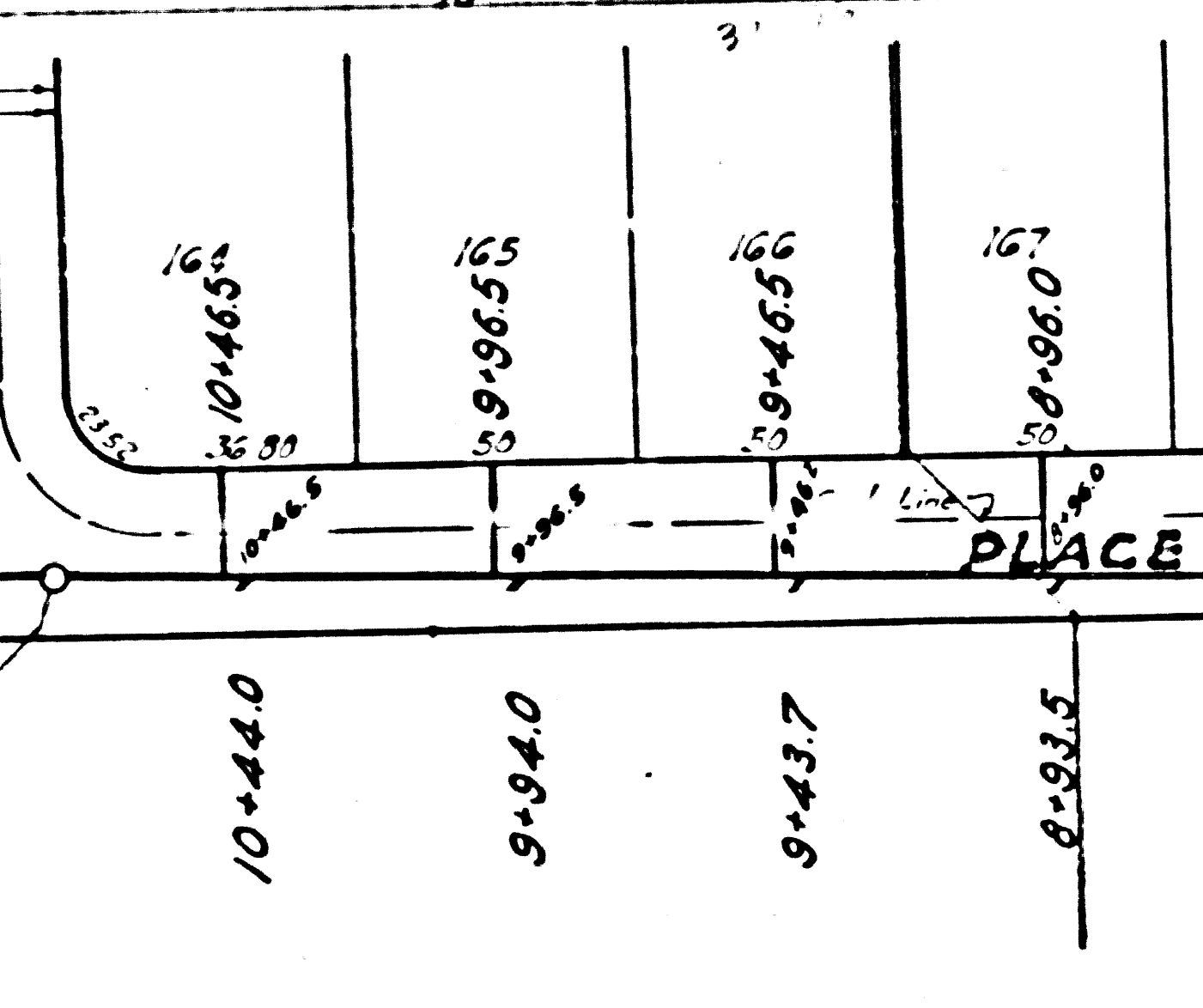
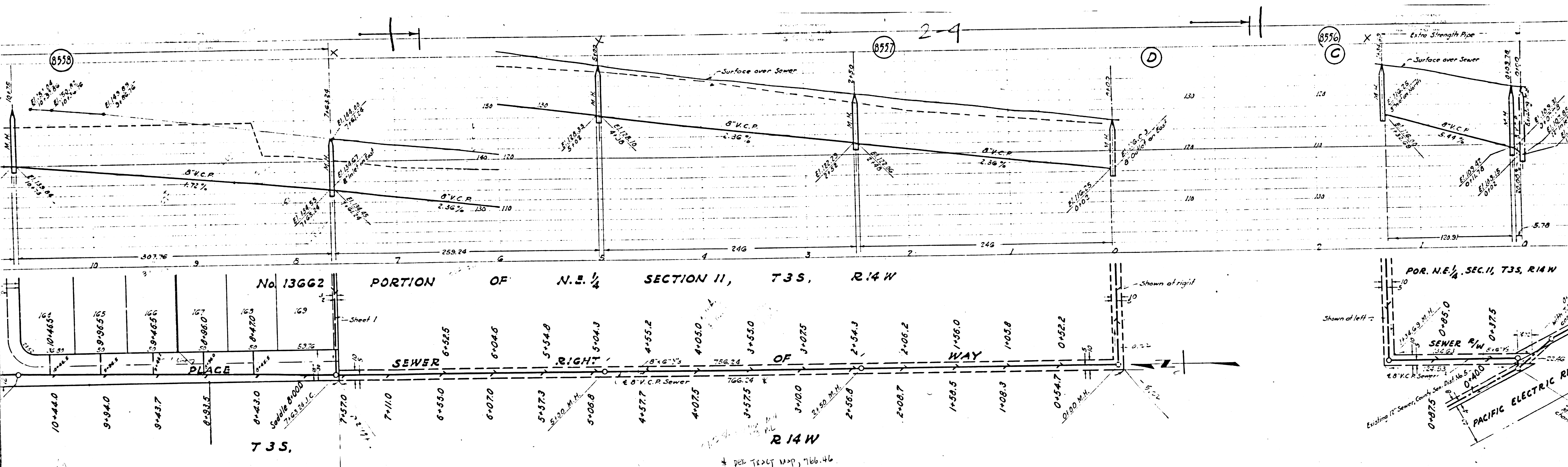
CHECKED *[Signature]* Oct 4 1948
 Office of County Engineer, Reg. C.E. No. 6322



448.09

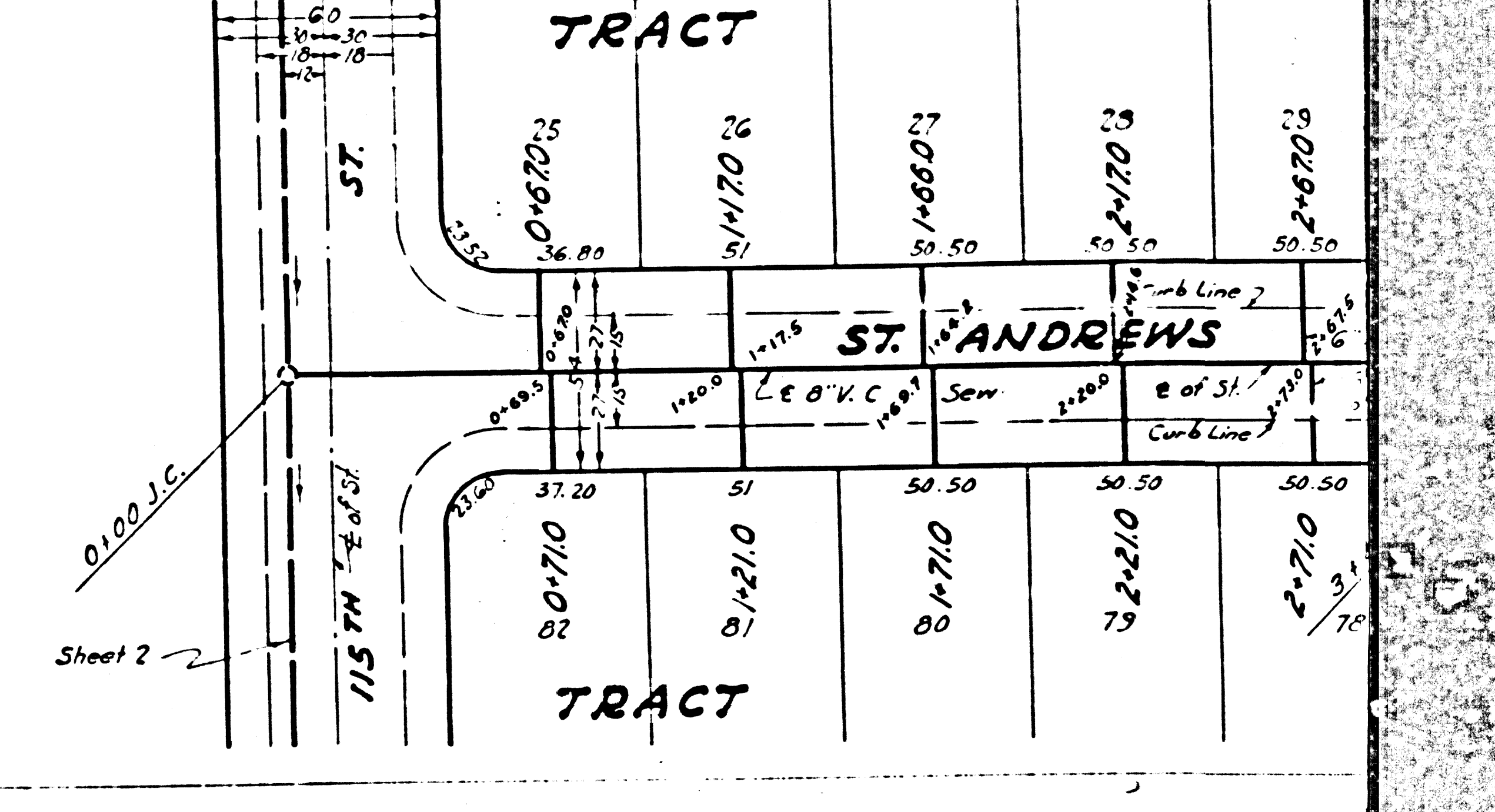
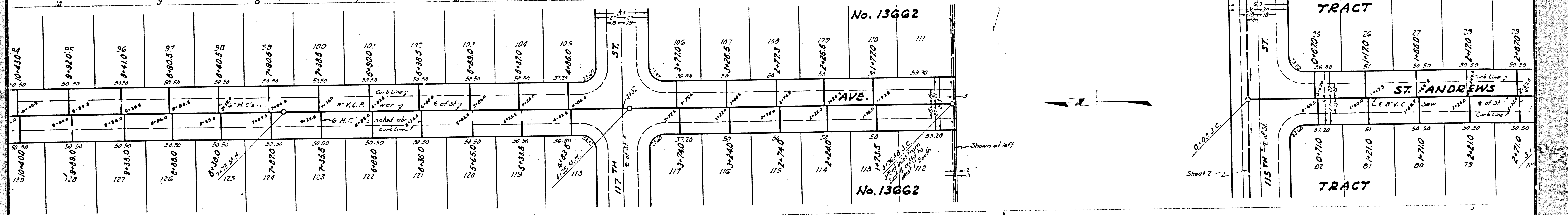
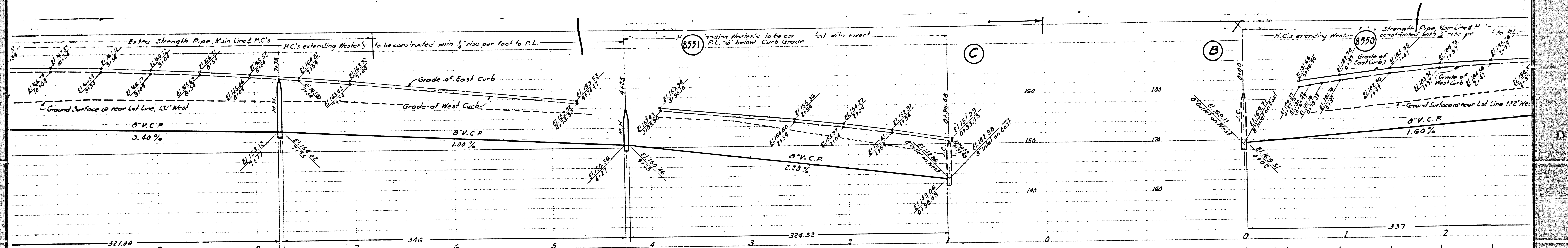
DE

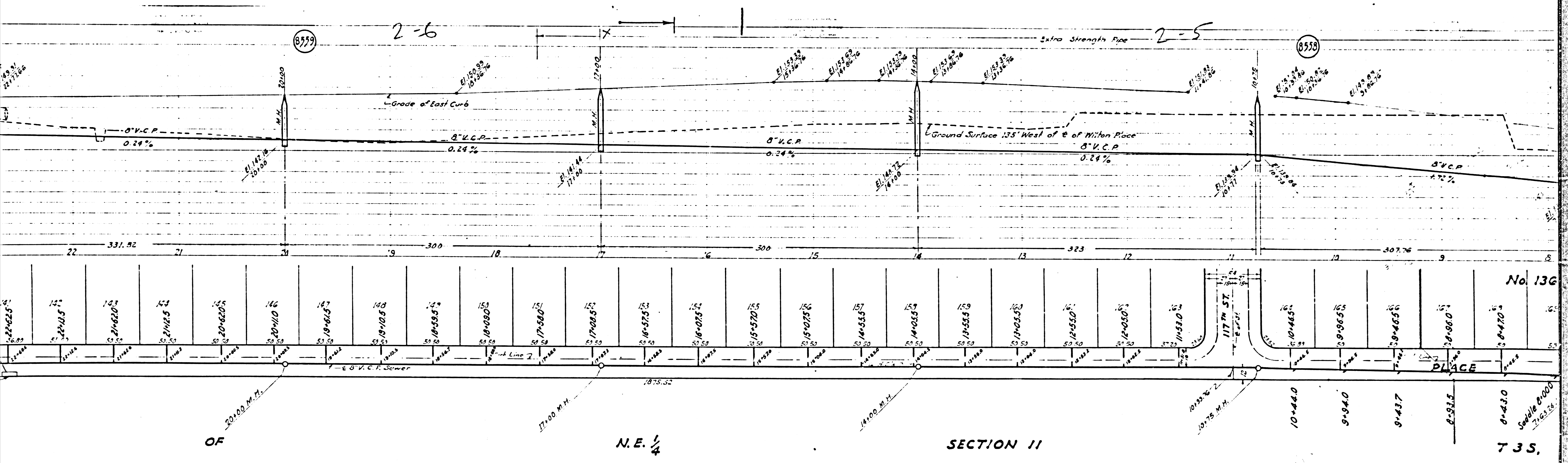




No. 13662 PORTION OF N.E. 1/4 SECTION 11, T3S, R14W
 SEWER RIGHT OF WAY
 73S, R14W
 * per TOWNSHIP MAP, 766.46

76
 75
 74





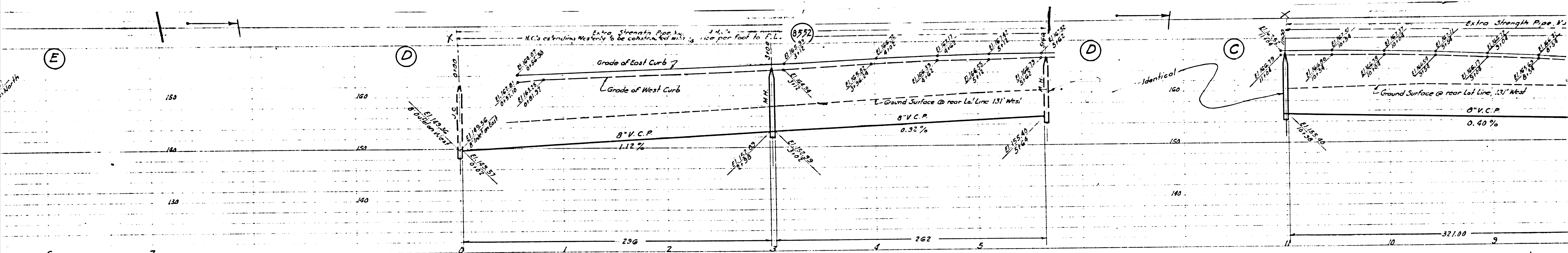
OF

N.E. 1/4

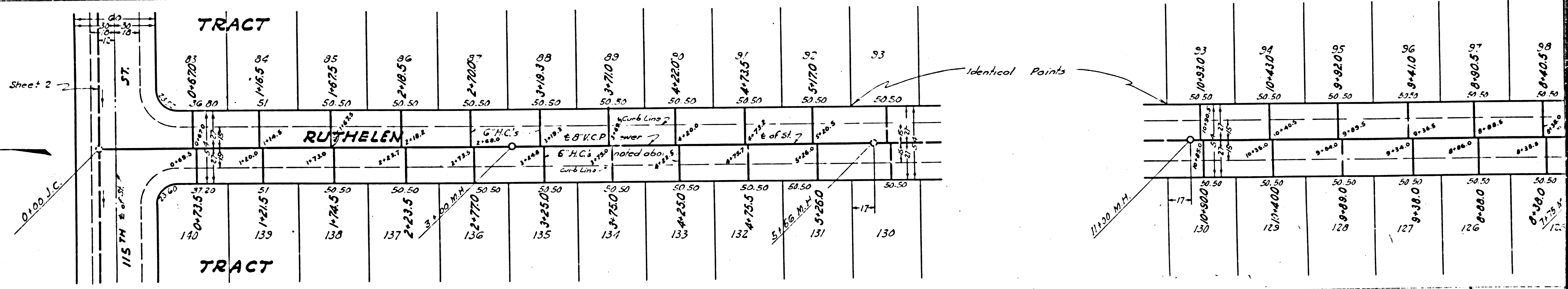
SECTION 11

No. 13G
PLACE
8+430
Sewer 8+000
7 3 S.

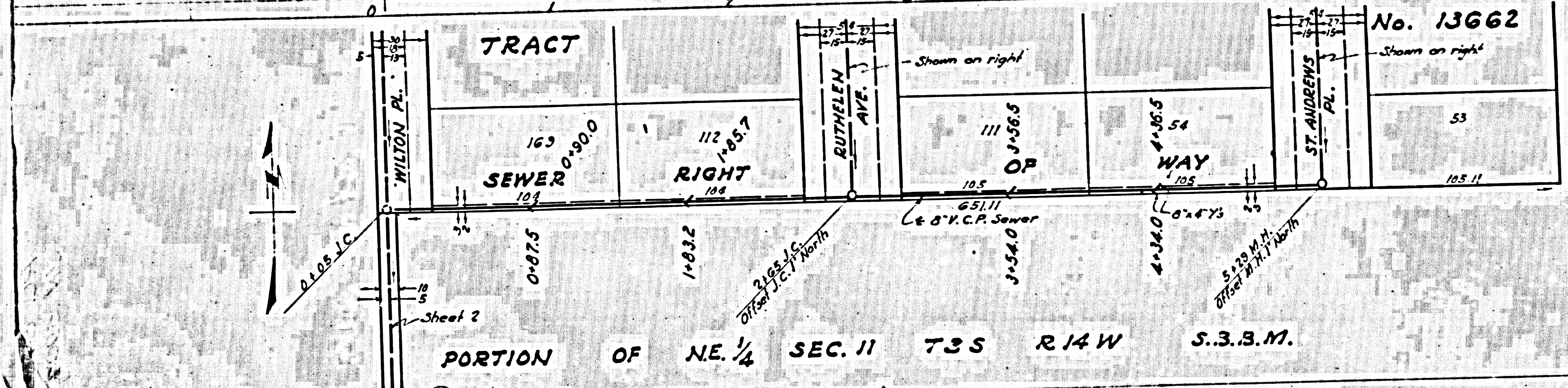
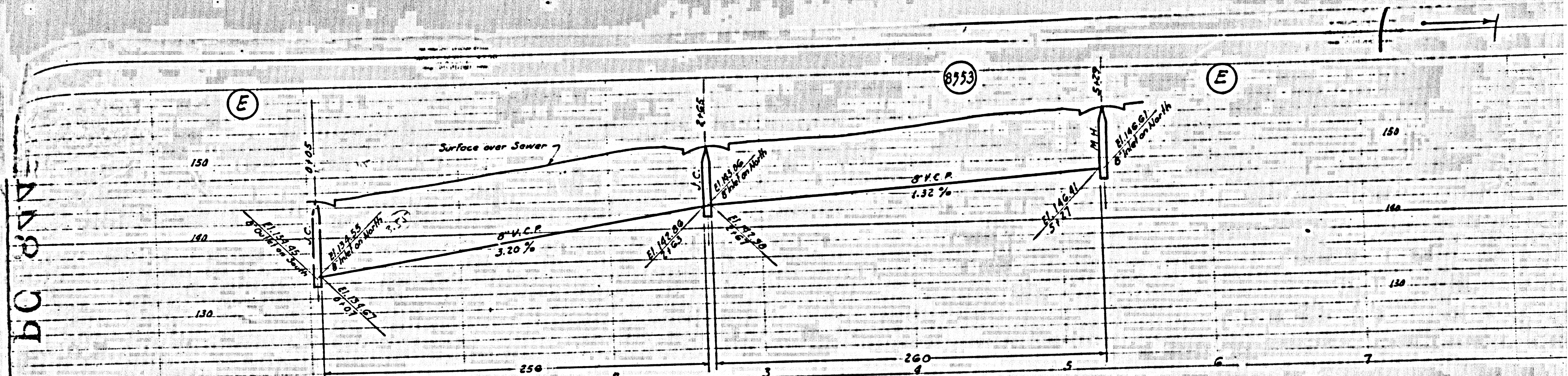
DE



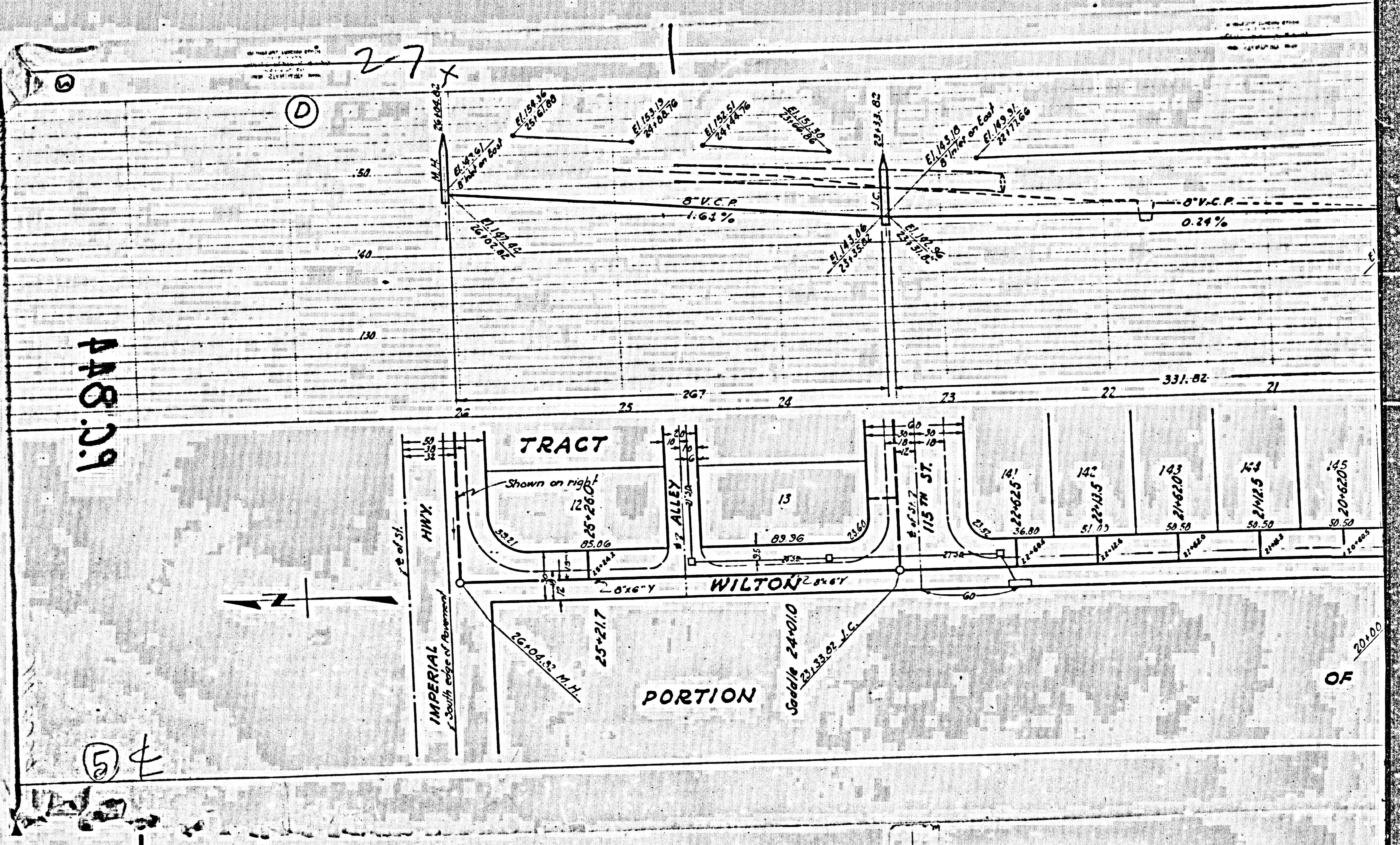
No. 13662
 Shown on right
 53
 125 H



DE



5



448.09

⑤ ±