

Trim Line

CASH CONTRACT NO. 642  
 PROFILE, ALIGNMENT AND GRADE OF  
**SANITARY SEWERS**  
 TO BE CONSTRUCTED IN  
 NORMANDIE AVENUE  
 BETWEEN 93rd ST. AND CENTURY BLVD.  
 PLAN NO. 10

USE STANDARD STRENGTH PIPE  
 USE CEMENT MORTAR FOR ALL VITRIFIED CLAY PIPE JOINTS  
 CONSTRUCT HOUSE CONNECTIONS WITH INVERT AT CURB LINE  
 6 FEET BELOW CURB GRADE EXCEPT AS NOTED BELOW  
 CONSTRUCT HOUSE CONNECTION EXTENSIONS ON 2 PERCENT GRADE TO CURB LINE  
 WHERE STATIONS ARE SHOWN ON PLAN JOIN HOUSE CONNECTIONS  
 TO EXISTING HOUSE CONNECTIONS. EXISTING HOUSE CONNECTIONS ARE  
 APPROXIMATELY 6 FEET BELOW ORIGINAL CURB GRADE.

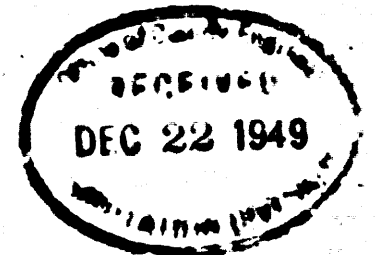
PRIVATE CONTRACT NO. 863  
 ONE SHEET

SCALE: 1" = 10' HORIZ. 1" = 4' VERT.  
 COUNTY OF LOS ANGELES, CALIFORNIA  
 C. E. ARNOLD COUNTY ENGINEER

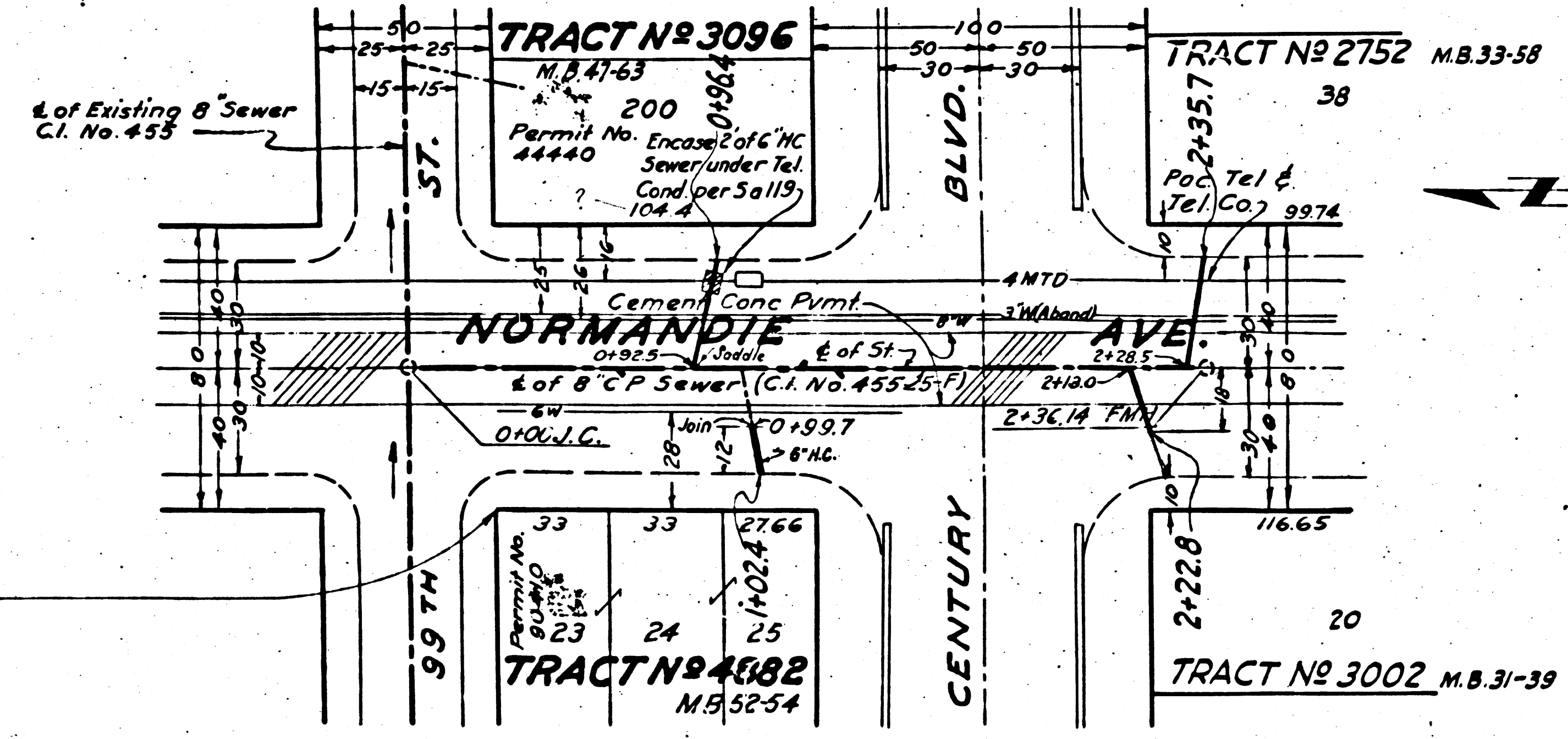
RECOMMENDED: *W. S. 24* CHIEF ENGINEER  
 APPROVED: *E. C. Arnold* COUNTY ENGINEER  
 APPROVED: *July 26 1949* ROAD COMMISSIONER  
 APPROVED: *W. S. 24* SANITATION DISTRICT NO. 0

FOR LEGEND  
 SEE PLAN NO. 8-64  
 NOTE: GRADES TO WHICH THIS IMPROVEMENT IS TO BE CONSTRUCTED ARE SHOWN ON PLANS AND PROFILES. GRADE POINTS FOR TOP OF CURB, CENTER LINE OF STREET OR CENTER LINE OF ALLEY ARE SHOWN BY CIRCLES ON PROFILES AT ALL POINTS BETWEEN DESIGNATED POINTS THE GRADE SHALL BE ESTABLISHED SO AS TO CONFORM TO A STRAIGHT LINE DRAWN BETWEEN SAID DESIGNATED POINTS. ELEVATIONS ARE IN FEET ABOVE U. S. G. S. DATUM OR MEAN SEA LEVEL. UNIT PRICES FOR ADDITIONAL WORK WHICH MAY BE REQUIRED BUT WHICH CANNOT BE ASCERTAINED IN ADVANCE SHALL BE SUBMITTED IN THE PROPOSAL. THIS DRAWING AND THE DATA HEREON ARE HEREBY MADE A PART OF THE SPECIFICATIONS.

REFERENCES		
W. S. 24	DESIGNED: KAWAKITA	NOV. 1948
A. B. 372	TRACED: KAWAKITA	DEC. 1948
F. B.	CHECKED: SHULTER-REMAN	FEB. 1949



Existing 8" Sewer C.I. No. 455  
 Shown at Right



IDENTICAL POINTS

EO

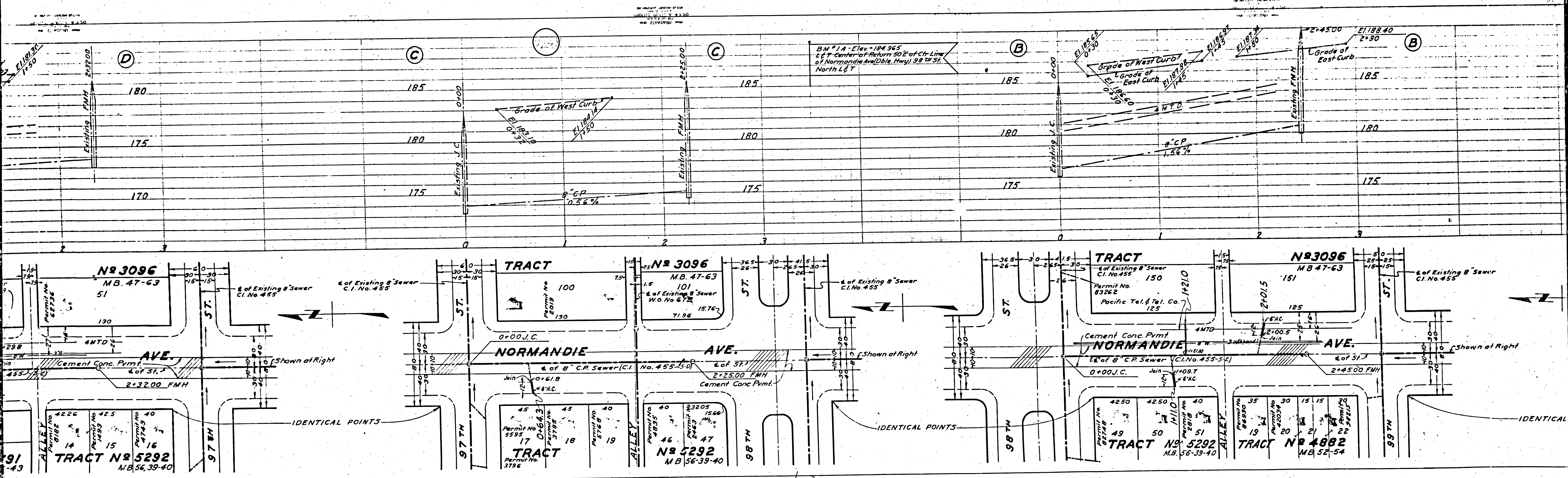
Trim Line

Cont'd - 3-13-50 - W. S. 24

NO PRINTS NECESSARY FOR PERMIT MAP BOOK  
 Data transferred onto C.I. 455 (in Book 2)  
 (Make 1 Print for Vault.)  
 1/2/50

CASH CONTRACT NO. 642 PLAN NO. 10 NORMANDIE AVE

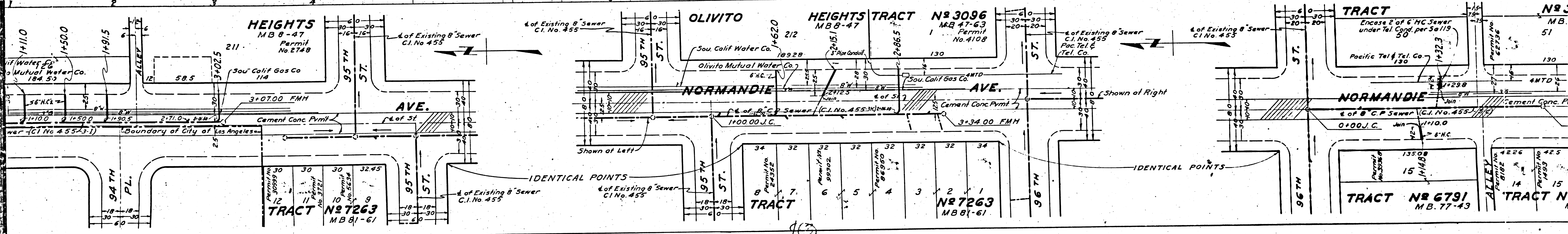
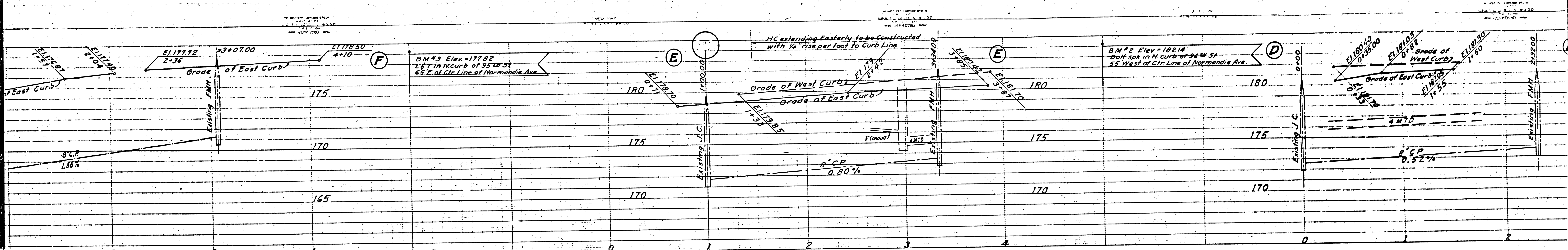




SHEET NO. 1 OF 2  
 DATE: 10/15/40  
 DRAWN BY: [illegible]  
 CHECKED BY: [illegible]

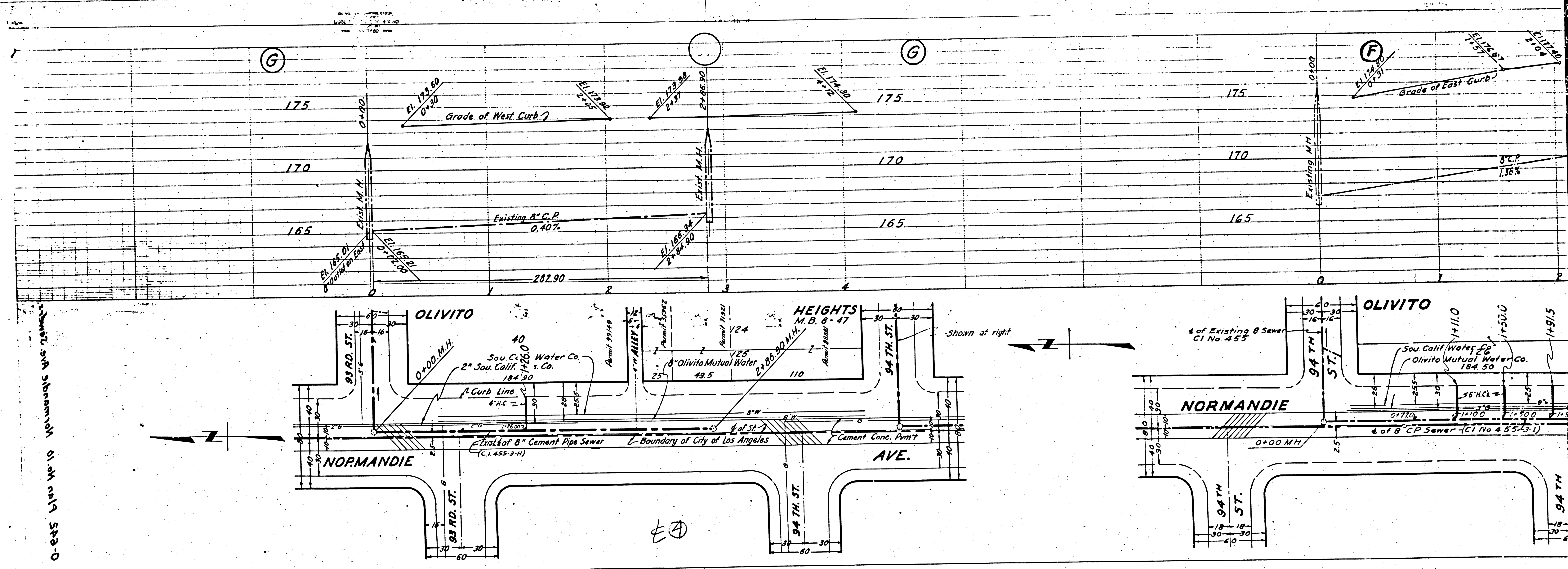
12





43





0-245 plus 10' Normandis Ave 2150'

